



English

Français

Español

**INTEGRATED DASH CAM
CAMÉRA DE BORD
CÁMARA DE SALPICADERO (“DASH CAMERA”)**

**Owner's Manual
Manuel du propriétaire
Manual del usuario**

Please read this manual carefully before using this product.
Veuillez lire attentivement ce manuel avant d'utiliser le produit.
Lea atentamente este manual antes de utilizar este producto.



5 6 1 5 N 6 5 6 0 0 1 R 0 0

TABLE OF CONTENTS

	PAGE
PRIVACY WARNING	1
SAFETY PRECAUTIONS	2
ABOUT THIS MANUAL	4
IMPORTANT INFORMATION	5
PLAYING BACK OF MOVIE FILES	9
GOVERNMENT REGULATIONS	10
TRADEMARKS	11
OPEN SOURCE SOFTWARE INFORMATION	12
INTRODUCTION	13
PARTS AND FUNCTIONS	14
INTEGRATED DASHCAM OPERATION	15
1 Inserting/Ejecting the microSD card.....	15
2 Starting.....	16
3 Shutting Down.....	17
4 Recording Video and Audio	17
5 Playing Back Recorded Videos.....	19
6 Checking Device Settings.....	19
OPERATIONS OF VIEWER SOFTWARE	20
1 Installing Viewer Software.....	20
2 Playing Back Recorded Videos.....	21
OPERATIONS OF VIEWER APPLICATION FOR SMARTPHONES.....	24
1 Installing Viewer Application	24
2 Setting Up WIFI Connection	24
3 Using Viewer Application	25
4 Changing Camera Settings.....	26
TROUBLESHOOTING INFORMATION	27
Integrated Dashcam.....	27
Viewer Software.....	28
GENERAL SPECIFICATIONS	31
Federal Communication Commission Interference Statement	32

PRIVACY WARNING

- A microphone is built into this Integrated Dashcam. If the voice recording function is turned on, sounds and voices in the vehicle are recorded and saved in the SD card. The Voice Recording function is turned off by default from the factory. Recorded sound data may infringe the privacy rights of passengers inside the vehicle. You must notify passengers when the voice recording function is turned on and request approval from passengers where necessary to record in the vehicle. You must comply with federal and state laws (including wiretapping laws) when the voice recording function is on.
- A video camera is built into this Integrated Dashcam. If the video recording function is turned on, images and video of the inside and outside of the vehicle are recorded and saved in the SD card. The video recording function is turned off by default from the factory. Recorded images and videos may infringe the privacy rights of passengers and other parties. You must notify passengers when the video recording function is turned on and request approval from passengers where necessary to record in the vehicle. You must comply with federal and state laws (including wiretapping laws) when the video recording function is on.
- Sharing or distributing images or video recorded from the Integrated Dashcam, including to a social media site, may infringe the privacy rights of passengers, pedestrians or other parties. We are not liable for the recording or use of images, video or voice recordings that infringe on the privacy of third parties, including if those recordings are uploaded to a social media site.

SAFETY PRECAUTIONS

Warning

- While driving, the driver must not insert or eject the SD memory card. Doing so may cause an accident from being distracted. If these operations are necessary, be sure to park the car in a safe place.
- NEVER drive dangerously on purpose in order to check that this equipment detects the impact properly. Noncompliance with this instruction may result in accidents.
- Do not disassemble or modify this equipment. Noncompliance with this instruction may result in traffic accidents, fire and/or electric shock.
- Do not allow water or foreign objects to enter the internal parts of this equipment. Otherwise, the equipment may emit smoke and/or catch fire and/or electric shock may result.
- If abnormal conditions occur, i.e. foreign objects enter this equipment and/or it is exposed to water and/or emits smoke and/or a strange odor, turn off vehicle immediately and contact the dealer from whom you purchased the equipment. Continuing to use it in these conditions may result in unexpected accidents, fire and/or electric shock.
- Do not damage the camera cable. Any holes in the camera will provide a point of entry for moisture and water. Noncompliance with this instruction may result in fire, electric shock and/or malfunctions.
- During a thunderstorm, do not touch the camera. Danger of electric shock may result from lightning strikes.
- The product packaging contains a plastic bag. NEVER put a plastic bag over your head or mouth. Failure to do so may result in serious accidents and/or death by suffocation. Keep plastic bags away from children.
- If the equipment becomes loose or dislodged during driving, do not attempt to pick up the camera or reinstall it while driving. Park the vehicle in a safe place before attempting to pick up or reinstall the camera.
- Do not put your hands and/or fingers into the card loading slot. Noncompliance with this instruction may result in injury.
- Do not use this equipment except for in-vehicle use. Otherwise, the equipment may emit smoke and/or catch fire, and/or electric shock and/or injury may result.
- Do not apply a strong shock to this equipment. Do not drop it. Do not put heavy objects on it. Noncompliance with this instruction may result in fire and/or malfunctions.

- If the equipment is dropped or the outer case is damaged, turn off vehicle and contact the dealer from whom you purchased the equipment. Continuing to use it in this condition may result in fire and/or electric shock.



Notice

- When changing the location of this equipment, consult the dealer from whom you purchased the equipment for removing and re-installing the equipment. Expertise is required for removal and installation of the equipment.
- If exposed to direct sunlight surface of camera may become hot.
- After installing this equipment, be sure to configure the calibration setting. Otherwise, the equipment may fail to detect the impact properly, it may work improperly and/or it may fail to work even if the vehicle receives impact.

ABOUT THIS MANUAL

For safety reasons, this manual indicates items requiring particular attention with the following marks.



Warning

Explains something that, if not obeyed, could cause death or serious injury to people.



Notice

Explains something that, if not obeyed, could cause damage to or a malfunction in the vehicle or its equipment.

IMPORTANT INFORMATION

Warnings about Video Recording

- The purpose of this Integrated Dashcam is to record the conditions when a vehicle is driven. Do not use the Integrated Dashcam for mischief or any other improper, unintended or unlawful purposes, including in a manner that violates the privacy rights of another person.
- One of the purposes of this Integrated Dashcam is to provide proof in the event of an accident. However, its effectiveness as evidence is not guaranteed.
- We are not liable for any damages that arise, such as from the video failing to record or a recorded file being damaged, nor for any losses, such as the Integrated Dashcam being damaged or from use of the Integrated Dashcam.

Videos may not be recorded or protected under the following conditions.

- (1) If a microSD card is not inserted in the Integrated Dashcam.
- (2) If the microSD card is ejected from the Integrated Dashcam.
- (3) If anything other than a genuine microSD card or the one provided with the Integrated Dashcam is used.
- (4) If recorded videos are overwritten (deleted) by newly recorded videos.
- (5) If the Integrated Dashcam or the microSD card is severely damaged, including due to a vehicle collision event or being immersed in water.
- (6) If the power supply cord from the battery to the Integrated Dashcam is broken or if the battery is damaged due to a severe accident.
- (7) If an impact is less than the set value (parking surveillance function).
- (8) If camera visibility is extremely low, such as due to windshield condensation or heavy precipitation.
- (9) If the MicroSD card memory has become corrupted, you may lose data or may not be able to record. MicroSD cards have limited life and may require replacement.

Videos during an impact event may not be recorded or saved during the following cases:

- (1) If your vehicle collides at low speed, or if another vehicle collides with yours at a relatively low speed.
- (2) If a part of your or the other party's vehicle is hit in a part designed to mitigate impact.

- * Bumpers, doors, spare tire cover, etc. absorb shock, so the actual impact may be smaller than it appears.
- * Accidents in which the impact is so slight that the air bag does not activate may not be detected.
- (3) If the other party's vehicle has relatively less weight than to your vehicle, or if your vehicle collides with a person or a bicycle.
- (4) If the contact with the other party's vehicle is at an angle rather than a direct impact.
 - * If the other party's vehicle is relatively lighter in weight (vehicle vs. person, vehicle vs. bicycle, etc.), or if the other vehicle rolls over, the shock of the collision is mitigated, and the shock to your own vehicle is lower.
- (5) If sudden braking is applied on a snowy or frozen road.
 - * There is little friction between a vehicle's tires and the road when it is snowy or frozen. Consequently, the vehicle slips at even the slightest impact, which is difficult for the G-sensor to detect.
- (6) If the impact is below G-sensor sensitivity settings.
- (7) If there is a problem in the installation of the Integrated Dashcam, such as the body of the Integrated Dashcam not being fixed, or if the calibration after installation is incorrect.
- This Integrated Dashcam is used for recording video; however, it is not guaranteed that it will always be able to confirm a traffic signal. Environmental factors may prevent confirmation of the traffic signal. We bear no liability for conditions in which a traffic signal cannot be confirmed.
- LED traffic signals flash faster than the human eye can detect, so when video is shot with the Integrated Dashcam, it may appear to be blinking. We shall bear no responsibility if video cannot capture an LED traffic signal device.
- This video recorder is constantly recording while ignition is on. When the microSD card is full, older videos are deleted and overwritten by new ones in the unit of "Chapter" files (except event-protected video files).
- When the data is important, save the video to your smartphone using the smartphone application or eject the microSD card and save the video on a personal computer.
- In the case of an accident, turn off the ignition key of the vehicle as soon as possible. Eject the microSD card and save the video on a personal computer.
- We are not liable for corrupted files that may occur when saving image or video files that you have shot to a computer.

Cautions about Operating and Handling the Dash Camera

Warning

The driver should not eject/insert the microSD card, or operate a smartphone while driving. Doing so may cause an accident from being distracted. If these operations are necessary, be sure to park the car in a safe place first.

- Do not park or stop the car illegally in order to use the Integrated Dashcam.
- Do not touch the Integrated Dashcam with a bare hand if it has been sitting in direct sunlight during the summer. The Integrated Dashcam may be hot and cause a burn.
- Do not spray any type of cleaner or pour water on the Integrated Dashcam. The double sided tape may fail and allow the Integrated Dashcam to fall.
- Videos recorded when there is water on the windshield or when it is dirty may result in unclear images.
- When cleaning the windshield, do not pull on the Integrated Dashcam or the cord with excessive force. The Integrated Dashcam may come off. (Please consult your dealership if it comes off).
- This Integrated Dashcam acquires date and time via GPS. If the date, time, and/or location of the recorded data is wrong, or if the location fails to change, consult the dealership.
- When the vehicle battery is removed, the time is reset to the correct time at the next startup, when GPS data is received. After the battery has been reconnected, confirm that the GPS data has been received correctly by checking the recorded video file name and the location.
- Due to the properties of the camera's lens, people and objects on the screen may appear to be in a position and distance which may differ from their actual position and distance. Blooming phenomenon: When a bright object (sun, headlight, etc.) is recorded, white saturation occurs around the light.
- Do not scratches to camera surface may allow humidity or moisture inside, causing malfunction, fire, and/or electric shock.
- Do not wipe the Integrated Dashcam with alcohol, benzene, thinner, gasoline, or other volatile chemicals. Doing so may cause deformation, deterioration, or other damage.
- When the camera lens is dirty, lightly wipe the lens with a soft cloth soaked in water. Rubbing the lens roughly with a dry cloth may cause scratching.

Handling SD Cards

- When using a microSD card for the Integrated Dashcam, always use a genuine microSD card or the microSD card provided with the Integrated Dashcam. MicroSD card provided with the Integrated Dashcam is industrial grade with longer life compared to other commercially available microSD cards. The Integrated Dashcam may not operate properly if another type of microSD card is used.
- Do not save data other than that recorded by this Integrated Dashcam to the microSD card. Otherwise, videos may not be recorded properly.
- Confirm that the Integrated Dashcam is off (LED is off) when inserting/ejecting the microSD card. Do not insert/eject a microSD card while the Integrated Dashcam is running. Doing so may damage the microSD card.
- Never eject the microSD card while the Integrated Dashcam is accessing the card (LED is on or blinking). Doing so may damage not only the microSD card but also the Integrated Dashcam itself.

Warning

- Do not insert a hand or a finger in the microSD card slot. Doing so may result in injury.
- Do not insert any foreign material into the card slot for the microSD card. Doing so may cause a fire or electrical shock.
- The microSD card may be hot right after the power is turned off. Be careful not to touch with bare hands.

PLAYING BACK OF MOVIE FILES

Video recorded on this Integrated Dashcam may be viewed on a computer that meets the following specifications.

• Personal Computer Requirements

	Windows Computers	Macintosh Computers
OS	Windows 7, 32-bit or 64-bit Windows 8/8.1, 32-bit or 64-bit Windows 10, 32-bit or 64-bit	Mac OS X 10.12 or later
CPU	Processor with 2.4 GHz or higher, CPU with Intel® Core™ i5 or later version	Intel® Core™ i5 or higher
Memory	4 GB or more (Recommended more than 8 GB)	4 GB or more
Display	1024 × 768 (XGA) pixel or higher, High Color (16 bit) or higher	1280 × 800 or higher
Audio	PCM sound reproduction function compatible with Windows	Standard built-in Macintosh computer audio
Other	<ul style="list-style-type: none"> • Internet Explorer 9.0 or later version • DirectX 9.0 or later version • Accessing the microSD card is possible via a card reader. • Internet connection environment (for display of travel position via Google Maps) 	<ul style="list-style-type: none"> • Safari 9 or later version • Accessing the microSD card is possible via a card reader. • Internet connection environment (for display of travel position via Google Maps)

NOTE

- System requirements may change. Refer to following URL for latest minimum specifications.
- The video image may be distorted and/or the audio interrupted on some computers. If this happens, close the viewer software and restart it to view the video.

• Smartphone Requirement

In order to see the video recorded with this Integrated Dashcam on the viewer software of a smartphone, a device that meets the following specifications is required.

Apple	<ul style="list-style-type: none"> • Mobile device: iPhone 5 or later • Operating system: iOS 9.0 or later
Android	<ul style="list-style-type: none"> • Mobile device: Android smartphone • Operating system: Android OS 5.0 or later

* iPad is not supported.

NOTE

- For the latest application information, please check the App Store or Google Play.

GOVERNMENT REGULATIONS

Federal Communication Commission Interference Statement

For regulatory identification purposes, your device is assigned a model number of N656.

FCC ID : P4Q-N656

- Canada

This device complies with part 15 of the FCC Rules. Operation is subject to the following two conditions: (1) This device may not cause harmful interference, and (2) this device must accept any interference received, including interference that may cause undesired operation.

This device has been tested and found to comply with the limits for a Class B digital device, pursuant to Part 15 of the FCC Rules. These limits are designed to provide reasonable protection against harmful interference in a residential installation. This equipment generates, uses, and can radiate radio frequency energy, and, if not installed and used in accordance with the instructions, may cause harmful interference to radio communications. However, there is no guarantee that interference will not occur in a particular installation. If this equipment does cause harmful interference to radio or television reception, which can be determined by turning the equipment off and on, the user is encouraged to try to correct the interference by one or more of the following measures:

- Reorient or relocate the receiving antenna.
- Increase the separation between the equipment and receiver.
- Connect the equipment into an outlet on a circuit different from that to which the receiver is connected.
- Consult the dealer or an experienced radio/TV technician for help.

FCC Caution

Any changes or modifications not expressly approved by the party responsible for compliance could void the user's authority to operate the equipment.

The antenna(s) used for this transmitter must not be co-located or operating in conjunction with any other antenna or transmitter.

FCC RF Radiation Exposure Statement

This equipment complies with FCC radiation exposure limits set forth for an uncontrolled environment.

End users must follow the specific operating instructions for satisfying RF exposure compliance.

This equipment should be installed and operated with minimum distance 20cm between the radiator & your body.

TRADEMARKS



- App Store is a service mark of Apple Inc., registered in the U.S. and other countries.
- Apple and iPhone are trademarks of Apple Inc.
- iOS is the name of the OS of Apple Inc.
- Apple, Macintosh and Mac OS are trademarks of Apple Inc., registered in the U.S. and other countries.



- Google Play is a trademark of Google Inc.
- Google Maps is a trademark of Google Inc.
- Android is a trademark of Google Inc.
- microSDHC Logo is a trademark of SD-3C, LLC.
- Windows 7, Windows 8, Windows 8.1, and Windows 10 are registered trademarks of Microsoft Corporation in the United States and/or other countries.
- Other company names and product names used in this manual are either registered trademarks or trademarks of their respective company.

OPEN SOURCE SOFTWARE INFORMATION

- **About Open Source Software included in the smartphone App**

The viewer software of a smartphone includes certain open source or other software originating from third parties that is subject to different copyright licenses. The source code and the license information of software licensed under different copyright licenses are distributed in the list below.

For iOS App

Library Name	License
ffmpeg-android	GNU Lesser General Public License (LGPL) version 2.1
MBProgressHUD	MIT license.
XMLReader	MIT license.
YouTube-Player-iOS-Helper	Apache 2.0 license
CocoaAsyncSocket	BSD License
RMDateSelectionViewController	MIT license.
SSZipArchive	MIT license.
SDWebImage	MIT license.
vlc-ios	GPLv2 (or later)

For Android App

Library Name	License
Ffmpeg-android	GNU Lesser General Public License (LGPL) version 2.1
libopenh264-1.7.0-android19.so.bz2	BSD License
jsr305	BSD-3-Clause License
LogUtils	Apache License, Version 2.0 (the "License")
Rxjava2	Apache License, Version 2.1 (the "License")
Glide	Apache License, Version 2.2 (the "License")
Okio Retrofit2	Apache License, Version 2.3 (the "License")
Common io HttpClient HttpCore okhttp3	Apache License, Version 2.4 (the "License")
Support library Google API Client Library for Gson Google API Client Library for Java	Apache License, Version 2.5 (the "License")
VLC	GPLv2 (or later)
IJK Player	LGPLv2.1 or later

INTRODUCTION

The Integrated Dashcam is designed to be installed on your front windshield. The camera will automatically save and record data after impact in the event of a crash. The camera automatically starts when the ignition power is on. When the vehicle is stationary, you can access videos and change the settings via your smartphone app.



The Integrated Dashcam features a number of different recording modes:

Normal Recording: Loop recording, video file duration (2 mins). Oldest file deleted once Normal Recording allocation is full.

Event Recording: Triggered by G-sensor or triggered manually. Oldest file deleted once Event Recording allocation is full. This over-writing can be turned off in the app.

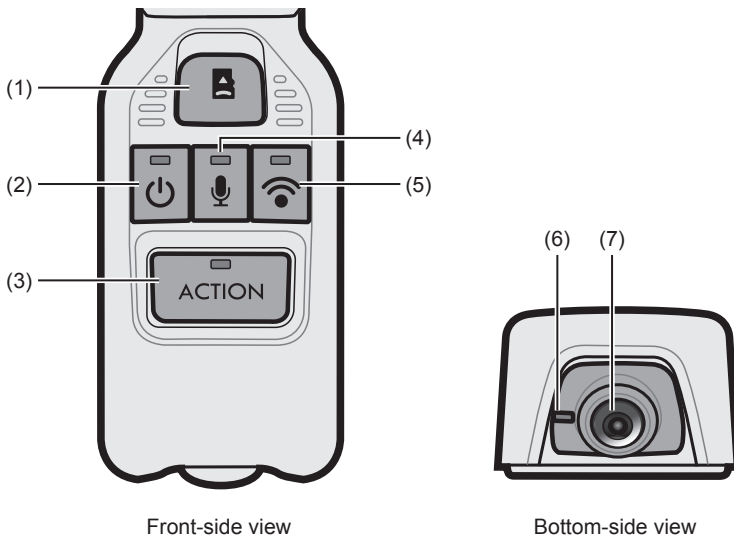
Parking Recording: Starts once ACC off, recording is triggered by G-sensor and takes 5 seconds to boot up and record 1 MINUTE of footage per G-shock event. Oldest file deleted once Parking Recording allocation is full. This over-writing can be turned off in the app.

Adventure Recording: Records continuous file till card full or user stops recording.

For any questions about your Toyota Integrated Dashcam, please consult your Toyota dealer.

Thank you for purchasing a Toyota Accessory.

PARTS AND FUNCTIONS



(1)	MicroSD card slot	<ul style="list-style-type: none"> • Insert the microSD card to be used into this slot.
(2)	Power button	<ul style="list-style-type: none"> • Turns the dashcam on or off.
	Power LED (Green)	<ul style="list-style-type: none"> • The LED is on when the dashcam is powered on.
(3)	ACTION button	When continuous recording is in progress: <ul style="list-style-type: none"> • Starts or stops an event recording. • Turns the Adventure mode on or off.
	ACTION LED (Red)	<ul style="list-style-type: none"> • The LED is blinking slowly when the event recording is in progress. • The LED is blinking quickly when the Adventure recording is in progress.
(4)	Microphone button	<ul style="list-style-type: none"> • Mutes or unmutes the microphone during recording.
	Microphone LED (Yellow)	<ul style="list-style-type: none"> • The LED is on when the microphone is enabled during recording.
(5)	WIFI button	<ul style="list-style-type: none"> • Turns the WIFI mode on or off.
	WIFI LED (Blue)	<ul style="list-style-type: none"> • The LED is blinking when the WIFI mode is turned on. • The LED is on when the dashcam is connected to the smartphone.
(6)	Security LED (Red)	<ul style="list-style-type: none"> • The LED is blinking when the system enters the Parking mode.
(7)	Camera	<ul style="list-style-type: none"> • Records the video images.

INTEGRATED DASHCAM OPERATION

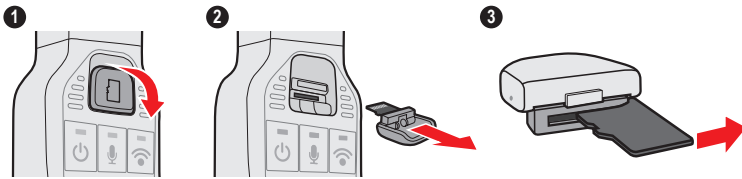
The dashcam records video, audio, location data from GPS into the microSD card while driving. With the viewer software dedicated for this dashcam, video and audio can be played back as well as checking the location while driving in coordination with Google Maps. This section describes the procedure to use the dashcam.

1 Inserting/Ejecting the microSD card

● Ejecting the microSD card

To play back recorded videos on a computer, eject the microSD card.

1. Open the microSD card slot cover.
2. Remove the cover to eject the microSD card.
3. Slide the card outwards to detach it from the cover.



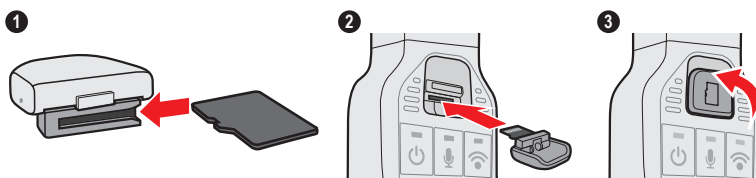
NOTE

- Never eject the microSD card while the dashcam is accessing the card (LED is on or blinking). Otherwise it may damage not only the microSD card but also the dashcam itself.
- Before ejecting the microSD card, confirm that the dashcam power is off (LED is off).
- The dashcam does not work without insertion of a microSD card. Be careful not to forget inserting a microSD card. When the card slot is empty, you will hear continuous high-tone beeps.

● Inserting the microSD card

The dashcam does not work without insertion of a microSD card. If the microSD card is not inserted, insert the card while paying attention to the following items.

1. Slide the microSD card inwards to attach it to the microSD card slot cover.
2. Insert the microSD card into the microSD card slot.
3. Close the microSD card slot cover.



NOTE

- Confirm that the dashcam power is off (LED is off). Do not insert a microSD card while the dashcam is running. Otherwise, the microSD card may get damaged.
- When attaching a microSD card to the microSD card slot cover, check the direction of the card and then slide it into the gap of the cover.
- Close the microSD card slot cover securely to make sure that the microSD card is inserted correctly.

2 Starting

The power of the dashcam is linked to the ignition key of the vehicle. While the power of the dashcam is off, confirm that the microSD card is inserted.

Turn on the ignition key or the ignition of the vehicle.

The power turns on, and the REC LED (green) of the dashcam starts blinking and then turns on. (ERROR LED (yellow) turns off)

When you hear a short and high-tone beep, startup is finished.

NOTE

- Just after formatting the microSD card, the dashcam creates files that are necessary for recording the videos. Therefore, the time until completion of the startup becomes longer.
- Recording a video is not ready until startup is done. The dashcam starts recording just after startup is finished.
- When an abnormal vibration and/or a shock is detected while the vehicle is parked, the power turns on automatically. Then the dashcam records the video of surrounding area for approximately 60 seconds. (Parking surveillance function)

When the parking surveillance function is activated, a notification buzzer of one long high-tone beep and five short high-tone beep sounds twice at the next ignition ON. However, if the parking surveillance function is set off, the power does not turn on automatically.

3 Shutting Down

Turn off the ignition key or the ignition of the vehicle. The recording ends and the LED turns off, the power is off.

NOTE

- LED may remain ON depends on camera setting [Surveillance Start Delay].

4 Recording Video and Audio

This dashcam is a constant-recording type drive recorder. The dashcam is turned on when the vehicle ignition is turned ON. When startup is done, the dashcam starts recording video and audio (if microphone switch is turned on). The REC LED (green) lights on while recording. When the ignition key or the ignition is turned off, recording is stopped. This dashcam has special video event recording modes to capture and protect important videos.

While driving, recorded videos are automatically protected when the dashcam detects a strong shock (Event Protection Function – Automatic) or the ACTION button on the main body is pressed (Event Protection Function – Manual, or Adventure Mode).

While vehicle is parked and vehicle ignition is OFF, video is recorded when the dashcam detects an abnormal vibration or shock (Parking Surveillance Function).

When the microSD card is full, older videos are deleted and overwritten by new ones in the unit of "Chapter" files (except event-protected video files). Event-protected video files are explained below:

● EVENT PROTECTION FUNCTION - AUTOMATIC

When the dashcam detects a shock during the normal recording, the dashcam outputs at least 1 minute before or after file by the time event is triggered.

● EVENT PROTECTION FUNCTION - MANUAL

Press the ACTION button of the main body during the normal recording. The dashcam outputs at least 1 minute before or after by the time event is triggered.

NOTE

- After an accident, users should download the footage or replace the SD card with another one to ensure vital footage is not lost.

● ADVENTURE MODE

Hold down the ACTION button for more than 1 second during the normal recording.

The dashcam outputs three short high-tone beeps and protects the recorded video for the set maximum recording time of the Adventure mode starting from the time when the button is pressed.

While recording in the Adventure mode, holding the ACTION button for more than 1 second will output three short high-tone beeps and ends the Adventure mode. Adventure mode will automatically end if allocated time has been reached and will be output beep sounds.

NOTE

- The recording times in the standard recording and the Adventure mode vary depending on the selected image quality.
- The maximum recording time in the Adventure mode is about half of the maximum recording time in the standard recording.
- When the Adventure Mode is turned off, the protection of recorded video up to that point will be cancelled.
- When the memory allocation of the computer or smart phone viewer is changed, partial protection of the video recorded up to that point will be canceled.
- The settings can be changed by the viewer software for computer or the viewer application for smartphones (Android/iPhone)

● PARKING SURVEILLANCE FUNCTION

When an abnormal vibration and/or a shock is detected while the car is parked, the video is recorded for 60 seconds from the time of the detection. The recorded video is protected.

Normal Wake-Up:

When the car is parked, if an unusual vibration or shock is detected, it starts recording after 6 seconds for about 60 seconds and protects the recorded video.

NOTE

- The settings can be changed by the viewer software for computer or the viewer application for smartphones (Android/iPhone).
- When the battery voltage reaches the specified value or lower, the Normal Wake-Up is automatically activated.

● On/off Selection of Audio Recording

Audio recording can be turned on/off by the audio recording on/off switch on the dashcam. The REC LED (red) lights on during recording regardless of audio recording on/off condition.

● Backup Power

The dashcam contains internal capacitors for continued saving recording file in the SD card in cases of battery power disconnection or ACC off. Internal backup power enables recording of video for

approximately 5 seconds after power loss; however this time is not guaranteed. Available time may be shorter in conditions such as low temperatures or immediately after camera starts up.

NOTE

- Never take the microSD card out of the slot while the dashcam is writing data to the microSD card (REC LED (green) is on or blinking). Otherwise it may damage not only the microSD card but also the dashcam itself.
- Quickly and repeatedly turning the dashcam on and off generates many short videos and the total amount of recording time is decreased.

5 Playing Back Recorded Videos

Play back the video recorded by this dashcam with the viewer software for Macintosh and Windows computers or the viewer application for smartphones (Android/iPhone).

6 Checking Device Settings

Check the settings by the viewer application for smartphones (Android/iPhone).

OPERATIONS OF VIEWER SOFTWARE

Videos and audio recorded by this dashcam can be played back on your computer. This section describes the procedure to use the viewer software.

NOTE

- Screenshots are from a computer with Windows 10. The screen may be different from the actual screens depending on the OS and settings.
- The value in "< >" is the default value.

1 Installing Viewer Software

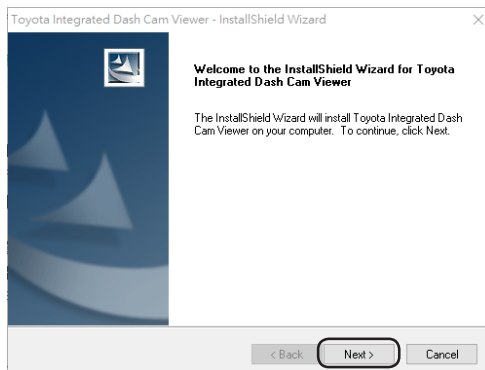
Download the viewer software from the dedicated web site page.

1. Start up the web browser such as Internet Explorer and access to the dedicated web site page to download the installer for viewer software.

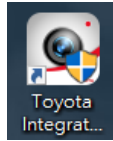
NOTE

- Site may be down periodically for maintenance.
2. Read the License agreement conditions and Disclaimers and select [I Agree].
3. From the displayed web site page, download the installer for the viewer software.
4. Copy the viewer software installer "setup.exe" to a location on your computer (such as the Desktop).
5. Double-click on "setup.exe".
6. Click [Next] on the Install Wizard screen.

Then proceed the installation by following the instructions on the screen.



- When installation is finished, a shortcut icon for "Toyota Integrated Dashcam Viewer" is created on the Desktop.



NOTE

- To start up the viewer software as soon as the installation is completed, click [Finish] while [Start Toyota Integrated Dashcam Viewer] on the Installation Complete screen is checked.
- Depending on your computer, the dialog of "User Account Control" is displayed while installing or when starting up the viewer software for the first time. Follow the instruction on the screen and always click [Yes].

2 Playing Back Recorded Videos

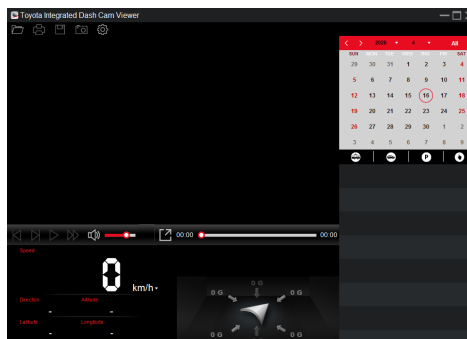
Recorded videos can be played back using the viewer software.

Start up the viewer software by the following procedure and play back the video.

- Insert the microSD card ejected from the dashcam to the computer by using the card reader device.

NOTE

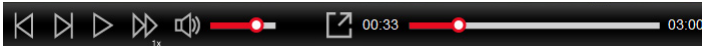
- Depending on the computer setting, "What do you want Windows to do?" dialog may be displayed when the microSD card is inserted. In that case, click the [Cancel] button, select [Take no action], or close the dialog by using the "X" button at the upper right section.
- Double-click on "Toyota Integrated Dashcam Viewer" shortcut icon on the Desktop.
 - The viewer software starts.











- By default, the viewer software shows the calendar and the file list on the right.
- When a recording file exists, you will see the date marked with the “●” icon. Click that date to display the files that were recorded on that date.
- You can select the file type to display:



- To display all files in the current folder, click [All]. To return to the calendar view, click [Calendar].
4. Double-click the desired file on the file list to start playback.
 5. The playback controls are described as follows:








	Skips to the previous file on the list.
	Skips to the next file on the list.
	Starts or pauses the playback.
	Changes the playback speed to 1/4x, 1/2x, <1x>, 1.5x or 2x.
	Mutes or unmutes the volume.
	Adjusts the volume level.
	Plays the video in full screen.
	Displays the playback progress. You can click on a point along the track bar to move directly to a different location for the playback.

6. During playback, you can view more driving information from the dashboard panel and the G sensor chart that are displayed below the video playback screen.

The G sensor chart displays data in 3-axis waveform about the car's shift forward/backward (X), to the right/left (Y) and upward/downward (Z).

7. The tool bar allows you to do the following:



	Selects the folder that stores the recording files.
	Previews and prints the current video image.
	Saves the selected files to the specified location on your computer.
	Captures and saves the current video image to the specified location on your computer.
	<p>Opens the Settings Menu.</p> <ul style="list-style-type: none"> • Change Language: Sets the display language of the viewer software. • About: Displays the version and copyright information of the viewer software.

OPERATIONS OF VIEWER APPLICATION FOR SMARTPHONES

When the dashcam is connected to the smartphone (Android/iPhone) by WIFI connection, the videos and audio recorded by the dashcam can be played back on the smartphone.

A special viewer application "Toyota Integrated Dashcam" is used for the playback. In addition, various settings of this dashcam can be changed with the viewer application.

NOTE

- The WIFI function cannot be used while driving. Park the vehicle at a safe place first before operating the application functions.
- Images shown here are of Android Smartphones. Procedures are the same in iPhones.
- No video recording while WIFI function is enable on dashcam.
- Start the viewer application with the language set to the smartphone. However, if a language other than English, French, or Spanish is set, the viewer application starts up in English.
- Firstly, please confirm if your smartphone WIFI setting has been turned on.
- During WIFI connection, the dashcam stops video recording. When recording the video, close the viewer application.
- The viewer app for smartphones can only be used if the dashcam is connected to WIFI.
- For the WIFI connection procedure, see the instruction manual of your smartphone.
- The value in "< >" is the default value.

1 Installing Viewer Application

Search the "Toyota Integrated Dashcam" and download the application from your smartphone app store.

- For Android smartphone: Google Play Store
- For iPhone: App Store

2 Setting Up WIFI Connection

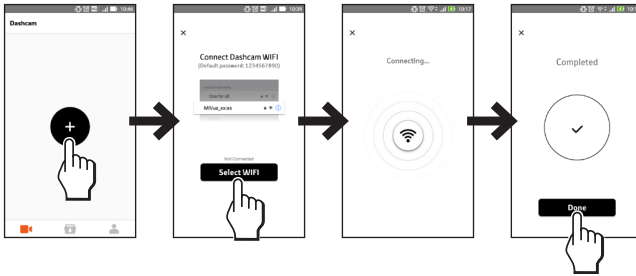
On the dashcam, use the WIFI button to enable the WIFI mode.

On your smartphone, follow the steps to set up the WIFI connection.

1. Make sure that you have enabled the WIFI function on the

smartphone.

2. Open the viewer application and tap the "+" icon.
3. Tap [Select WIFI] and then select the dashcam you want to connect to.
4. Tap [Done] to complete the WIFI connection.



3 Using Viewer Application

Once the devices are connected, the screen will display the main page.



- Tap [Live View] to watch the live video of the connected dashcam.
- Tap [Settings] to change the settings for the dashcam.
- Tap [SD card] to access the video list to download or delete the recordings on the dashcam.
- Tap [Info] to display the information of the dashcam.
- Tap ▼ to connect a new dashcam.
- Tap 📄 to view the downloaded recordings.
- Tap 👤 to change the storage location of the downloaded recordings (for Android users only), update the firmware/safety camera data (if available), and view the information of the app.

4 Changing Camera Settings









The settings of this dashcam can be changed. The new settings will take effect when WIFI is disconnected.

1. On the main page of the viewer app, tap [Settings].
2. Select the item of which setting is to be changed.

Item	Function
Video Recording	
Resolution	Sets the resolution of videos captured by the dashcam. <1080P30> / 1080P60
EV	Sets the exposure level to adjust the brightness of the image. -1.0 / -0.67 / -0.33 / <0.0> / +0.33 / +0.67 / +1.0
Auto-Override Event Files	<On> / Off
G-Sensor Sensitivity	Sets the sensitivity level of the G sensor that allows automatic triggering of event recording while continuous recording is in progress. 0 / 1 / 2 / <3> / 4
Stamps	Sets the information that will be displayed on the recorded video. <Coordinates> / G-sensor / Hide All
Speed Stamp	Displays the driving speed on the recorded video. <On> / Off
Parking Mode	
Detection	When enabled, the dashcam will automatically enter the Parking mode when the car stops moving for about 5 minutes. <On> / Off
Auto-Override Parking Files	<On> / Off
Security LED Indicator	Turns on or off the Parking indicator in the Parking mode. <On> / Off
G-Sensor Sensitivity	Sets the sensitivity level of the G sensor that allows automatic triggering of the parking recording when the dashcam is in the Parking mode. Low / <Medium> / High
System	
Date / Time	Sets the system date and time.
Speed Units	Sets the preferred distance unit. KMH / <MPH>
System Reset	
Format SD card	Formats a memory card. (All data will be erased.)
Restore to Defaults	Restores the system settings to the factory defaults.

TROUBLESHOOTING INFORMATION

Integrated Dashcam

Question	Answer
When the power of the vehicle is turned on, the LED does not turn on/the power does not turn on.	 There may be an issue with the power supplied to the dashcam. Consult the dealership where you purchased the dashcam.
How can I check the video recorded successfully?	 Check that the video is displayed using the Viewer software or the smartphone.
Can I intentionally delete the data in the microSD card?	 The video data can also be deleted by formatting of the microSD card.
The dedicated microSD card is inoperative. What can I do?	 Format the microSD card. If recording is still unavailable, consult the dealership where you purchased the dashcam.
I cannot find a recorded video.	 This dashcam is a constant-recording type of video recorder. When the microSD card is full, older videos are overwritten in the unit of "Chapter" files (except event-protected video files). Please download any important videos to your computer or smartphone as soon as possible.
The dashcam cannot recognize the traffic signal color.	 If only the traffic signal light is not displayed, it is not necessarily a failure with the dashcam. Depending on the video recording frequency and the LED type traffic signal frequency, there is a possibility that the traffic signal appears to be off. In addition, there is a possibility that the traffic signal color is not visible under some circumstances such as the backlight. In that case, judge the traffic signal color from the contents of video before and after the timing and from the vehicle conditions around the vehicle. We are not liable for the condition that the traffic signal color cannot be detected.
The power of the dashcam cannot be turned off even when the engine is turned off.	 Camera power off delays depends on camera setting. Consult the dealership where you purchased the dashcam.
The dashcam does not start.	 Consult the dealership where you purchased the dashcam.

Question	Answer
<p>The video cannot be recorded onto the microSD card.</p>	<p>The dashcam may not be working properly due to the following reasons. Please check.</p> <p>Is the microSD card in a normal condition? If there is any problem, format the microSD card.</p> <p>Is the microSD card genuine or the one provided with the dashcam? MicroSD card provided with the dashcam is industrial grade with longer life compared to other commercially available microSD cards. Performance cannot be guaranteed when a commercially available microSD card is used.</p>
<p>When getting in or out of the vehicle, parking surveillance protected files are automatically created.</p>	<p>Check the parking surveillance function sensitivity settings and adjust if necessary.</p>
<p>Files recorded during parking contain many files without any abnormal conditions. The video file is not created even after the vehicle is hit while in a parked condition.</p>	<p>Check the parking surveillance function sensitivity settings and adjust if necessary.</p>
<p>SD Card Read Write Problem or No SD Card</p>	<ol style="list-style-type: none"> 1. Check if SD card is existed or not; 2. Format SD card; or 3. Change a new card.

Viewer Software

Question	Answer
<p>I do not have a computer. Can I see the recorded video?</p>	<p>Recorded videos can be played back by the viewer application for the smartphone.</p>
<p>The OS of computer is Windows 98, ME, 2000, XP, or Vista. Can I see the videos?</p>	<p>The viewer software does not start up with the OS older than Windows 7.</p>
<p>The viewer software does not start.</p>	<p>The viewer software does not support older operation system. Confirm the required specifications of Windows computers or Macintosh computers from the following URL. http://www.e-iserv.jp/top/driverecorder/DashCamViewer/index.html?lang=en In case if the OS is a proper version but the software does not start, the file of the viewer software may be corrupted. Re-install the software. The viewer software does not support other OS such as Linux.</p>

Question	Answer
<p>Can I watch the recorded videos with the general-purpose software such as Windows Media Player, etc.?</p>	<p>Yes. However, distinguishing between the constantly-recorded videos and other videos that were protected by using the ACTION button is not possible. In addition, not all general-purpose software can be used for playback.</p>
<p>The video does not start playing back even the playback button is pressed.</p>	<p>Open the file again and playback. If the playback still does not start, the video file may be corrupted. When the file is corrupted, playback is not possible. Delete the file that cannot be played back. If the file cannot be deleted, backup the necessary files in the microSD card. Then, format the microSD card.</p>
<p>The video image is disturbed and/or the voice is interrupted during playback.</p>	<p>End the viewer software and re-start up the viewer software to play back the video.</p>
<p>Viewer software was accidentally deleted.</p>	<p>Software can be downloaded from the download site.</p>
<p>The computer does not recognize the microSD card when the card is inserted.</p>	<p>The microSD card may not be properly inserted in the computer. Eject the microSD card once and insert it again. In addition, when the card reader is used, the card reader itself may not be recognized by the computer.</p>
<p>When the setting screen of the dashcam is opened, a warning message, "The configuration file cannot be read." opens.</p>	<p>When opening the setting screen of the dashcam, the dashcam loads the configuration record file that was actually working from the microSD card. This actual configuration record file does not exist right after purchasing or after formatting the microSD card. In that case, the warning message on the left is displayed; this is normal. Select the [OK] button.</p>
<p>When I select a video in the "Trip" tab, it plays back from part way through a trip; is it supposed to do this?</p>	<p>When the microSD card is full, older videos are overwritten in the unit of "Chapter" files. If old files that would be overwritten are eventprotected, the protected files are left as is, so when you select a video in the "Trip" tab, it may start playing partway through a trip.</p>

Question	Answer
I changed the setting on the setting screen of the Dash Camera and loaded. However, the changed setting is not reflected.	Insert the microSD card into the dashcam and start up. The set content becomes reflected.
The location of the vehicle on the map is deviated from the actual location.	Depending on the location such as a high-rise area or the GPS satellite condition, the GPS data cannot be properly received, and the location of the vehicle may be displayed at a deviated location on the map.
The speed of the vehicle is deviated from the actual speed.	The speed is acquired from the GPS data. Depending on the location such as a high-rise area or the GPS satellite condition, the speed may be different from the actual speed.
The playback speed slows down sometimes.	When the size of recording data increases, the frame rates is lowered in order to secure the recording time. In this case, the video seems slow sometimes.
When the playback button is pressed, the image is played back but without voices.	Confirm microphone switch position. Confirm the volume setting of the viewer software. Check the settings. Confirm that the volume setting of computer or smartphone is not at minimum.

GENERAL SPECIFICATIONS

Item	Specification
Operating temperature range	-20°C to +65°C (-4°F to 149°F)
Storage temperature range	-30°C to +85°C (-22°F to 185°F)
Power supply voltage	12 VDC
Consumption current	2A or lower
External dimension (H x W x L)	85 x 55 x 36 mm (3.3 x 2.1 x 1.4 inch) * Excluding projecting parts
Weight	146g (5.15 oz)
Recording Modes	Normal Recording Event Recording Parking Recording Adventure Recording
Number of video frames	30 or 60 frames/second by setting
Clock accuracy	Correct by GPS
Number of effective pixels	Approx. 2-million pixels
Angle of field	Horizontal 117° Vertical 60°
Video/voice compression method	MP4 (H.264 + AAC)
Wireless LAN	IEEE 802.11 b/g/n Frequency band: 2.4 to 2.4835 GHz Type of modulation: DSSS: DBPSK/DQPSK/CCK OFDM: BPSK/QPSK/16QAM/64QAM Transmission rate: 802.11b: 11 Mbps (max) 802.11g: 54 Mbps (max) 802.11n (20 MHz): 72.2 Mbps (max)
Certificate	FCC ID : P4Q-N656

Federal Communication Commission Interference Statement

For regulatory identification purposes, your device is assigned a model number of N656.

FC FCC ID: P4Q-N656

This device complies with part 15 of the FCC Rules. Operation is subject to the following two conditions: (1) This device may not cause harmful interference, and (2) this device must accept any interference received, including interference that may cause undesired operation.

This device has been tested and found to comply with the limits for a Class B digital device, pursuant to Part 15 of the FCC Rules. These limits are designed to provide reasonable protection against harmful interference in a residential installation. This equipment generates, uses, and can radiate radio frequency energy, and, if not installed and used in accordance with the instructions, may cause harmful interference to radio communications. However, there is no guarantee that interference will not occur in a particular installation. If this equipment does cause harmful interference to radio or television reception, which can be determined by turning the equipment off and on, the user is encouraged to try to correct the interference by one or more of the following measures:

- Reorient or relocate the receiving antenna.
- Increase the separation between the equipment and receiver.
- Connect the equipment into an outlet on a circuit different from that to which the receiver is connected.
- Consult the dealer or an experienced radio/TV technician for help.

FCC Caution

Any changes or modifications not expressly approved by the party responsible for compliance could void the user's authority to operate the equipment.

The antenna(s) used for this transmitter must not be co-located or operating in conjunction with any other antenna or transmitter.

FCC RF Radiation Exposure Statement

This equipment complies with FCC radiation exposure limits set forth for an uncontrolled environment.

End users must follow the specific operating instructions for satisfying RF exposure compliance.

This equipment should be installed and operated with minimum distance 20cm between the radiator & your body.

