



User Manual

**Mio
N548**

Driving Recorder

Revision: R00
(11/2019)

Disclaimer

The screenshots in this manual may differ between different operating systems and software versions. You are recommended to download the latest User Manual of your product from Mio website (www.mio.com).

Specifications and documents are subject to change without notice. MiTAC does not warrant this document is error-free. MiTAC assumes no liability for damage incurred directly or indirectly from errors, omissions or discrepancies between the device and the documents.

Notes

Not all models are available in all regions.

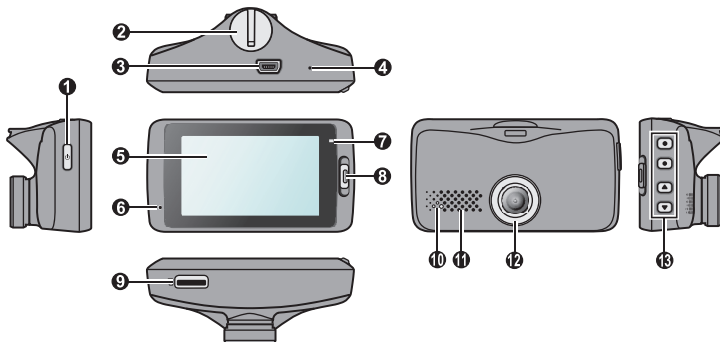
Depending upon the specific model purchased, the colour and look of your device and accessories may not exactly match the graphics shown in this document.

Table of Contents

Getting to know your dash cam.....	4
Rear camera.....	4
Power button	5
Event button	5
LED indicators.....	5
Using your dash cam in a vehicle.....	6
Inserting a memory card.....	9
Formatting a card	9
Connecting to your computer	10
Operating basics	11
Turning the dash cam on.....	11
Restarting the dash cam	11
System icons	11
Function keys	12
Switching screens	12
Setting the date and time	13
Setting up a WIFI connection	13
Recording in driving mode.....	14
Continuous recording	14
Event recording.....	15
Recording in Parking mode	15
Camera mode.....	16
Playback mode.....	16
Safety camera alerts	18
Adding a safety camera.....	19
Updating safety camera data	19

System settings	20
MiVue Manager	25
Installing MiVue Manager	25
Playing the recording files	25
For more information	28
Precautions and notices	28
Caring for your device	28
Safety precautions	29
About charging	29
About the charger	29
About the battery	30
About WIFI	30
About GPS	30
Federal Communication Commission Interference Statement	31
FCC Caution	31
FCC RF Radiation Exposure Statement	32
WEEE	32

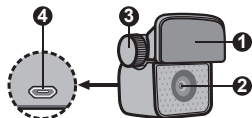
Getting to know your dash cam



- | | | |
|-----------------------|----------------------|------------------|
| 1 Power button | 6 Microphone | 11 Speaker |
| 2 Device mount socket | 7 System indicator | 12 Camera lens |
| 3 Mini-USB connector | 8 Event button | 13 Function keys |
| 4 Shutdown button | 9 Memory card slot | |
| 5 LCD screen | 10 Parking indicator | |

Rear camera

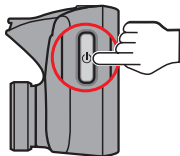
Depending on your model, your device may support a rear camera (may be sold separately).



- 1 Mounting pad
- 2 Camera lens
- 3 Fixing bolt
- 4 Micro-USB connector

Power button

- Press and hold for 2 seconds to manually turn the dash cam on and off.
- When the dash cam is turned on, press to switch the LCD screen on and off.



Event button

Press to manually start an event recording.



LED indicators

- System indicator
Glow in green when the dash cam is charging. During charging, the LED flashes in green and amber alternately while the recording is in progress.
- Parking indicator
Flashes in red when Parking recording is in progress.

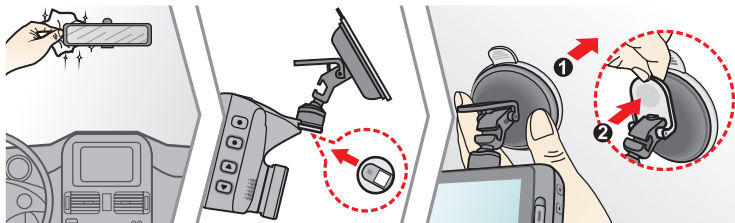
Using your dash cam in a vehicle

Note:

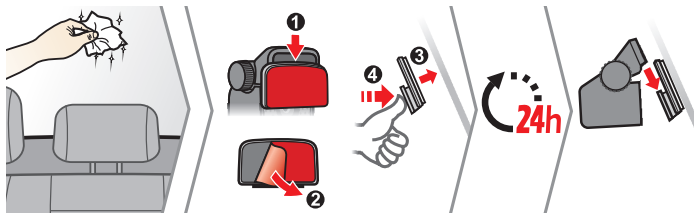
- To ensure the highest quality recordings, you are advised to place the dash cam near the rear view mirror.
- Select an appropriate location for mounting the device in a vehicle. Never place the device where the driver's field of vision is blocked.
- If the car's windscreen is tinted with a reflective coating, it may be athermic and impact the GPS reception. In this instance, please mount your device where there is a "clear area."
- The system will automatically calibrate the G sensor of the device during start-up. To avoid G sensor malfunction, always turn the device on AFTER you mount it in the vehicle properly.

Make sure that your car is parked on level ground. Follow the instructions to mount your dash cam in a vehicle securely.

1. Mount the dash cam.



2. Mount the rear camera (optional).



Note:

- Before sticking the mounting pad, you are recommended to clean the windscreen with rubbing alcohol.
- If the adhesion of the adhesive tape does not perform well, replace the tape with a new one.

3. Adjust the lens angle.

When adjusting the angle of mounting, make sure that the camera's view is parallel with the level ground and the ground/sky ratio is close to 6/4.

4. Connect the cables.

Route the cables through the top ceiling and the A-pillar so that it does not interfere with driving. Make sure that the cable installation does not interfere with the vehicle's airbags or other safety features.

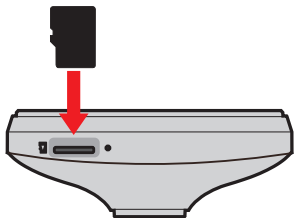
If you only use the dash cam (without connecting the rear camera) in your vehicle, simply connect the car charger to the dash cam and then plug it to the cigarette lighter.

The installation illustrations are for your reference only. The placement of the devices and cables may vary depending on the vehicle model. If you encounter any problems during installation, contact a skilled installer (such as the service personnel of the vehicle) for assistance.

Inserting a memory card

You must insert a memory card (not supplied) before you can start recording. The dash cam supports the Class 10 memory cards with 8 GB – 128 GB capacity.


Hold the card by the edges and gently insert it into the slot as shown in the illustration. To remove a card, gently push the top edge of the card inwards to release it and pull it out of the slot.



Note:

- DO NOT apply pressure to the centre of the memory card.
- MiTAC does not guarantee the product's compatibility with memory cards from all manufacturers.
- Before you start recording, please format the memory card to avoid malfunction caused by files not created by the dash cam.
- You are recommended to turn the device off before removing the memory card.

Formatting a card

To format a memory card (all data will be erased), press  and select **Format**.

Connecting to your computer

You can connect the dash cam to your computer to access data on the memory card. Follow the instruction below to connect the dash cam to the computer via the USB cable (not supplied).



Operating basics

Turning the dash cam on

Complete the installation according to the instructions in the “Using your dash cam in a vehicle” section. Once the vehicle engine is started, the dash cam automatically turns on.

Restarting the dash cam

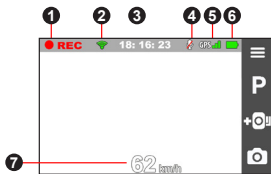
Occasionally, you may need to perform a hardware reset when the dash cam stops responding or if it appears to be “frozen” or unresponsive. To restart the dash cam, press and hold the Power button until the system is shut down; press the Power button again to turn the dash cam on.

If the system does not shut down by keeping the Power button pressed, you can force it to shut down by inserting a small rod (such as a straightened paperclip) into the Shutdown button on the top of the device.



System icons

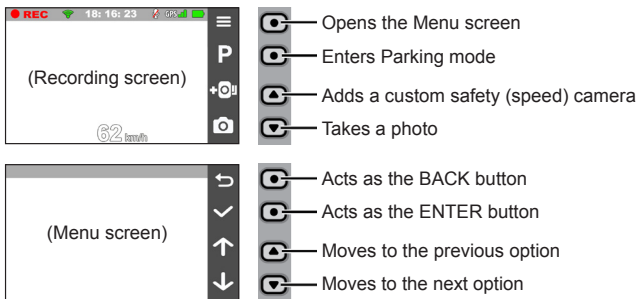
Various system icons on the status bar at the top of the screen provide the status information of your device. The icons displayed will vary depending on your device model and state.




- 1 Recording indicator
- 2 WIFI status
- 3 Time display
- 4 Microphone status
- 5 GPS signal
- 6 Battery status
- 7 Your current speed

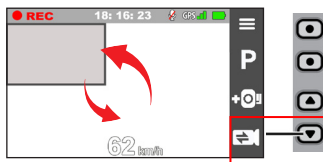
Function keys

The device provides four function keys to control the corresponding icons displayed on the LCD screen. The keys' functions may vary on different screens.










Switching screens

Once you connect the rear camera and start recording, the screen displays the PIP (picture-in-picture) mode. You can switch the front and rear camera images by pressing  .




Setting the date and time

To make sure that the date and time of your recordings are correct, check the settings before you begin recording.

1. Press  to access the Settings Menu.
2. Select **System > Date/Time**.
3. Select **Use GPS time** or **Manual**:
 - When you select **Use GPS time**, press  /  to select the time zone of your location. The system will set date and time according to the GPS location.
 - When you select **Manual**, the system will display the date and time setting screen. Use  /  to adjust the value of the selected field; press  and repeat the step until all fields have been changed.
4. When done, press .

Setting up a WIFI connection

The WIFI function allows you to connect the dash cam to your smartphone. The WIFI function is disabled by default. You can manually enable WIFI by selecting  > **WIFI > On**. Once enabled, the WIFI setting screen displays the SSID and password of the dash cam.

Follow the steps below to build the wireless connection between the dash cam and your smartphone:

1. Enable the wireless function of the smartphone.
2. The smartphone will automatically scan for available wireless devices. Tap the wireless setting to display the detected devices.
3. From the list, select the dash cam's SSID (MiVue-xxxx) and enter the password (xxxxxxxxx). When done, tap **Connect**.

The next time you use your smartphone to connect to the dash cam, you will not be prompted to enter the password again unless you reset your phone to the factory default settings.

Note: The instructions about operating the smartphone are for reference only. The actual setting options and methods may vary depending on your phone type/model.

4. You can check the WIFI connection status by the WIFI icon on the dash cam.



The dash cam is connected to the smartphone and paired with the MiVue app.



The dash cam is not connected to the smartphone.



The dash cam is connected to the smartphone but not paired with the MiVue app yet.



5. To transfer files from the dash cam to your smartphone, you will need to install the MiVue app onto your smartphone. Download and install the MiVue app by searching for "MiVue" in Apple App Store or in Google Play Store.

6. By starting the MiVue app on your smartphone, the dash cam will be ready to transfer video and photo files by simply pressing the Event button.

Recording in driving mode

Continuous recording


By default, the system will automatically begin with continuous recording in a few seconds after start-up. The recording may be divided into several video clips; recording will not stop between video clips.

When continuous recording is in progress, you can manually stop recording by pressing . Press  to return to the recording screen; the system will start continuous recording automatically.

The continuous recordings can be found in the "Video" category for file playback.

Event recording

By default, if an event happens such as a sudden impact, high speed driving, an aggressive turn or an accidental crash during continuous recording, the G sensor will prompt the dash cam to start recording the event.


Note: You can change the sensitivity level of the G sensor by selecting  > **Video Recording** > **G-Sensor Sensitivity**.


If you want to manually start an event recording while continuous recording is in progress, press the Event button on the device.

The event recordings can be found in the “Event” category for file playback.

Recording in Parking mode


Your dash cam supports the parking recording function. Depending on how long the car is parked, you may need an additional power source (for example, an uninterruptible power cable like Mio Smart Box which is sold separately) to record the video during Parking mode.


The Parking mode function is disabled by default. You can enable the function by selecting  > **Parking Mode** > **Detection** > **On**.


Before enabling Parking mode, please check the memory storage allocation of your device. Select  > **System** > **Storage Allocation** to set a proper allocation for parking recording. Changing the allocation will erase the memory card, so save any videos or photos to your computer first.

When the Parking mode detection is enabled, the system will enter Parking mode when you:

- Disconnect the device's power (for example, when the vehicle engine is stopped or the power cable is disconnected) or when the car stops moving for about 5 minutes.

Note: The feature is triggered by the G sensor of the device. You can change the configuration by selecting  > **Parking Mode** > **Auto Entry**.

- Press  to manually start Parking mode while continuous recording is in progress.

To stop Parking mode and resume continuous recording, press . If movements are detected and recorded during Parking mode, you will be asked to playback the video when you stop Parking mode.

The parking recordings can be found in the “Parking” category for file playback.

Camera mode







The dash cam allows you to take a photo.

- If the recording is in progress, press  to take a photo. This function is not available when the rear camera is connected.
- Press  > **Camera** > .



The photos can be found in the “Photo” category for file playback.

Playback mode

To select a video or photo for playback:

1. Press  > **File Playback**.
2. Select the desired type: **Video**, **Event**, **Parking** and **Photo**.
3. Press  /  to select the desired file from the list and then press  to start playback.
4. During playback, you can:
 - While playing videos, press  /  to play the previous/next video; while

viewing photos, press  /  to display the previous/next photo.

- Press  to return to the list.
- Press  to display the pop-up menu to select:
 - **Play/Pause:** Starts or pauses the playback.
 - **Play rear video:** The "D" icon displayed on the thumbnail on the playlist indicates that the video comes with a corresponding rear video. While playing the front video, you can use this option to switch to the rear video.
 - **Move to Event:** Moves the file to the "Event" category.
 - **Transfer video/Transfer photo:** Uploads the selected video/photo to your smartphone.
 - **Delete:** Deletes the file.

Note: If you move or delete a front video, its corresponding rear video will be processed synchronously.

Safety camera alerts

Caution: For legal reasons, the safety camera function is not available in all countries.

You can receive alerts to warn you about the locations of safety (speed) cameras which will enable you to monitor your speed through these areas.



When a safety camera appears and is positioned in the detectable direction, you will receive alerts. The screen will display the visual alert and you will also receive audio warnings.

When the alert sound setting is set to **Beep**:

- When your car approaches a safety camera, you will receive a normal beep alert.
- When your car approaches a safety camera at a speed over the set threshold, you will receive a persistent beep alert until your car speed drops lower than the appropriate speed limit.
- When your car passes through a safety camera, you will be notified by a different beep alert.




You can change the settings about how you want to receive the safety camera alerts. See the “System settings” section for information.

Adding a safety camera

Note: You can add a custom safety camera only when a GPS fix is established.

Your dash cam allows you to customise the safety camera database. You can add up to 100 custom safety cameras in your dash cam.

Follow the steps to configure a custom safety camera:

1. To add a custom safety camera in the current location, press  on the recording screen.
2. The next time when you pass by the location, you will receive alerts by the dash cam.
3. To view the information of the user-added safety camera, select  > **SafetyCam > Custom SafetyCam** and then select the safety camera that you want to check.
4. Press  to remove the custom safety camera from the dash cam.

Updating safety camera data

MiTAC does not warrant that all types and locations of safety camera data are available as cameras may be removed, relocated or new cameras installed.

Occasionally, MiTAC may offer you updates of safety camera data. Visit the MiTAC website for available downloads and follow the instructions to complete update.

System settings

To customise the system settings, press  .

Note: Depending on your MiVue model, certain setting options may not be available.

- **File Playback**

Plays the recorded videos and photos.

- **Camera**

Press to enter Camera mode.

- **WIFI**

Enables or disables WIFI. The default setting is **Off**. See the "Setting up a WIFI connection" section to learn how to connect the dash cam to your smartphone.

- **Sound Recording**

Sets if you want to include sounds in the recordings. The default setting is **On**.

- **TPMS**

TPMS (Tyre Pressure Monitoring System) is an electronic assistant device installed in the car's tyres to monitor the air pressure via your MiVue dash cam. You will receive alerts if the tyres are under (or over) inflated.

To configure the TPMS settings, press  .

- **Units:** Sets the unit of the pressure (psi, Bar, kPa or kg/cm²) and temperature (°C or °F).
- **Front Tyre Sensors:** Sets the minimum/maximum pressure and maximum temperature for the front tyres.
- **Rear Tyre Sensors:** Sets the minimum/maximum pressure and maximum temperature for the rear tyres.
- **Sensor Location:** Sets the sensors' location.

- **Learning Mode:** This option allows the dash cam to detect the TPMS sensors manually. You will need to do this only when you install or replace new sensors.

Note: For more information on installing and using TPMS, see the documentation that comes with the product.

- **Driving Safety**

The dash cam provides advanced driving safety functions to make your driving safer.

- **Calibration:** Follow the steps to calibrate the system.

1. Drive the vehicle in the middle of the lane.
2. Ask a passenger to select the option and then follow the on-screen instructions to complete calibration.

You are advised to calibrate the system constantly in order to be alerted properly.

- **LDWS:** Select **Beep** or **Voice** to enable the LDWS (Lane Departure Warning System) function. The system will alert you when it detects that the car speed is over 60 km/h and the car has strayed from its intended lane.
- **Headlight Reminder:** The default setting is **Off**. Once enabled, the system will remind you to turn the lights on when you are driving after dark.
- **Driver Fatigue Alert:** The default setting is **Off**. Once enabled, the system will remind you to take a break for a long-distance drive (**2 hours, 3 hours or 4 hours**).
- **Eco Drive Indicator:** The default setting is **Off**. Once enabled, the system will display the Eco drive indicator on the screen. The colour of the indicator will change (red, yellow or green) depending on your driving status to remind you to drive more efficiently.
- **FCWS:** Select **Beep** or **Voice** to enable the FCWS (Forward Collision Warning System) function. The system will alert you when the car moves slowly and gets too close to the car ahead.

- **Stop and Go:** The default setting is **Off**. Once enabled, the system will alert you when the car ahead has proceeded to go after being stopped for longer than 10 seconds.

- **SafetyCam**

Sets how you want to be notified of safety cameras. The available settings include:

- **Alert Sound:** The options are **Beep**, **Voice** and **Mute**.
- **Alert Distance:** The system will alert you at a preset distance (**Short**, **Medium** and **Long**) when a safety camera is detected.
- **Alert Method:** Sets the alert distance function according to your driving speed (**Smart Alert**) or the speed limit (**Standard Alert**).
- **Threshold:** Sets the speed value for the dash cam to start offering alerts.
- **Cruise Speed Alert:** Sets the limit for the cruise speed. When you drive at a cruise speed over the set value, you will receive alerts by the dash cam.
- **Custom SafetyCam:** Lists all user-added safety cameras which are sorted by the created time.

- **Parking Mode**

Allows you to change the settings of Parking mode. The available settings include:

- **Detection:** When enabled, the dash cam will automatically start recording when it detects movements or if an event happens in Parking mode.
- **Detection Method:** The options are **Only G-sensor**, **Only Motion** and **Both Motion & G-sensor**.
- **Auto Entry:** Sets the mode (**Low**, **Medium**, **High** or **Manual**) for the system to enter Parking mode automatically.
- **Motion Detection:** The options are **Low**, **Medium** and **High**.

- **G-Sensor Sensitivity:** Sets the sensitivity level (**Low**, **Medium** or **High**) of the G sensor that allows automatic triggering of the parking recording when the dash cam is in Parking mode.

- **LED Indicator:** The options are **On** and **Off**.


- **Video Recording**

Changes the settings of recording, including:

- **Video Clip Length:** Sets the length of each video clip for a continuous recording (**1 min**, **3 min** or **5 min**).
- **Video Resolution:** Sets the resolution of the video.
- **WDR:** Enables the WDR (Wide Dynamic Range) function to improve the dash cam's image quality under high-contrast lighting conditions.
- **EV:** Sets the proper exposure level (**-1** – **+1**) to adjust the brightness of the image. The default setting is **0**.
- **Frequency:** The options are **50Hz** and **60Hz**.
- **G-Sensor Sensitivity:** Sets the sensitivity level (6 levels, from **Low** to **High**) of the G sensor that allows automatic triggering of the event recording while continuous recording is in progress.
- **Stamps:** Sets the information (**Coordinates** or **G-Sensor**) that will be displayed on the recorded video.
- **Speed stamp:** Displays the driving speed on the recorded video.
- **Text stamp:** Displays customisable text input information.

- **System**

Allows you to change the system settings of the device.

- **Satellites:** Displays the status of the GPS/GLONASS signal reception. You can press  and then select GPS or GLONASS for better signal reception if the need arises.

- **Date/Time:** Sets the system date and time. For more information, see the "Setting the date and time" section.
 - **System Sound:** Enables or disables system notification sounds.
 - **Welcome Sound:** Enables or disables the notification sounds during start-up.
 - **Volume:** Adjusts the volume level.
 - **LCD Standby:** Selects **Always On** to keep the LCD on; or sets the timer for the LCD to turn off automatically (**10 sec**, **1 min** or **3 min**) after recording starts. Selecting **Standby** will turn off the LCD (in specified time) but still display the time and speed information.
 - **Language:** Sets the language.
 - **Distance Unit:** Sets the preferred distance unit.
 - **Storage Allocation:** The system provides 3 default memory configurations to store the videos and photos. Select the proper configuration based on your usage.
 - **Restore to Defaults:** Restores the system settings to the factory defaults.
 - **Version:** Displays the software information.
- **Format**
Formats a memory card. (All data will be erased.)

MiVue Manager

MiVue Manager™ is a tool for you to view the videos recorded on a MiVue dash cam.

Note: Not all features are available for every model.

Installing MiVue Manager

Download MiVue Manager from the Support page of our website (www.mio.com/support) and follow the on-screen prompts to install it. Make sure to download the correct software version (Windows or Mac) according to your computer's operating system.


Playing the recording files

1. Remove the memory card from the dash cam and access the card on the computer via a card reader. You are advised to copy the recording files to your computer for backup and playback.
2. Start MiVue Manager on the computer.
 - By default, MiVue Manager shows the calendar and the file list on the right.
 - When a recording file exists, you will see the date marked with “ . . . ” Click that date to display the files that were recorded on that date.
 - You can select the file type to display: **Event / Normal / Parking**.
 - To display all files in the current folder, click **All**. To return to the calendar view, click **Calendar**.
3. Double-click the desired file on the file list to start playback.
4. The playback controls are described as follows:



- 1 Skips to the previous / next file on the list.
- 2 Starts or pauses the playback.
- 3 Changes the playback speed to 1/4x, 1/2x, 1x (default), 1.5x, or 2x.
- 4 Mutes or unmutes the volume.
- 5 Adjusts the volume level.
- 6 Plays the video in full screen.
- 7 Displays the playback progress. You can click on a point along the track bar to move directly to a different location for the playback.

5. During playback, you can view more driving information from the dashboard panel and the G sensor chart that are displayed below the video playback screen.

- On the dashboard panel, click  to display the map screen.
- G sensor chart displays data in 3-axis waveform about the car's shift forward/backward (X), to the right/left (Y) and upward/downward (Z).

Note: The map screen may not display when the computer is not connected to the Internet or when your MiVue model does not support the GPS function.

6. The tool bar allows you to do the following:



- 1 Selects the folder that stores the recording files.
- 2 Previews and prints the current video image.
- 3 Saves the selected files to the specified location on your computer.
- 4 Captures and saves the current video image to the specified location on your computer.

- ⑤ Opens the Settings Menu. The Settings items are described as follows:
 - **Change Language:** Sets the display language of MiVue Manager.
 - **Change Skin:** Sets the colour scheme of MiVue Manager.
 - **Check for Update:** Checks if there is any new version of MiVue Manager. (Internet access is required for this feature.)
 - **About:** Displays the version and copyright information of MiVue Manager.
- ⑥ Exports the GPS information of the selected file in the KML format to the specified location on your computer.
- ⑦ Uploads the selected file to Facebook / YouTube™.

For more information

For regulatory identification purposes, the device is assigned a model number of N548.

Precautions and notices

- For your own safety, do not operate the controls of the product while driving.
- Using this product does not change the requirement for a driver to take full responsibility for his or her behavior. This responsibility includes observing all traffic rules and regulations in order to avoid accidents, personal injury or property damage.
- A window mount is needed when using the dash cam in a car. Make sure that you place the dash cam in an appropriate place, so as not to obstruct the driver's view or deployment of airbags.
- Make sure that no object is blocking the camera lens and no reflective material is placed near the lens. Please keep the lens clean.
- If the car's windscreen is tinted with a coating, it may impact the recording quality.

Caring for your device

Taking good care of your device will ensure trouble-free operation and reduce the risk of damage.

- Keep your device away from excessive moisture and extreme temperatures.
- Avoid exposing your device to direct sunlight or strong ultraviolet light for extended periods of time.
- Do not place anything on top of your device or drop objects on your device.
- Do not drop your device or subject it to severe shock.
- Do not subject your device to sudden and severe temperature changes. This could cause moisture condensation inside the unit, which could damage your device. In the event of moisture condensation, allow the device to dry out

completely before use.

- The screen surface can easily be scratched. Avoid touching it with sharp objects. Non-adhesive generic screen protectors designed specifically for use on portable devices with LCD panels may be used to help protect the screen from minor scratches.
- Never clean your device with it powered on. Use a soft, lint-free cloth to wipe the screen and the exterior of your device.
- Do not use paper towels to clean the screen.
- Never attempt to disassemble, repair or make any modifications to your device. Disassembling, modifying or any attempt to repair could cause damage to your device, may inflict bodily harm or damage to property and will void any warranty.
- Do not store or carry flammable liquids, gases or explosive materials in the same compartment as your device, its parts or accessories.
- To discourage theft do not leave the device and accessories in plain view in an unattended vehicle.
- Overheating may damage the device.

Safety precautions

About charging

- Use only the charger supplied with your device. Use of another type of charger may result in malfunction and/or danger.
- This product is intended to be supplied by a LISTED Power Unit marked with "LPS", "Limited Power Source" and output rated + 5 V dc / 2.0 A.

About the charger

- Do not use the charger in a high moisture environment. Never touch the charger when your hands or feet are wet.
- Allow adequate ventilation around the charger when using it to operate the device or charge the battery. Do not cover the charger with paper or other objects that will reduce cooling. Do not use the charger while it is inside a carrying case.

- Connect the charger to a proper power source. The voltage requirements are found on the product case and/or packaging.
- Do not use the charger if the cord becomes damaged.
- Do not attempt to service the unit. There are no serviceable parts inside. Replace the unit if it is damaged or exposed to excess moisture.

About the battery

CAUTION! This unit contains a non-replaceable internal Lithium Ion battery. The battery can burst or explode, releasing hazardous chemicals. To reduce the risk of fire or burns do not disassemble, crush, puncture or dispose of in fire or water.

- Use a specified battery in the equipment.
- Important instructions (for service personnel only)
 - Caution! Risk of explosion if battery is replaced by an incorrect type. Dispose of used batteries according to the instructions.
 - Replace only with the same or equivalent type recommended by the manufacturer.
 - The battery must be recycled or disposed of properly.
 - Use the battery only in the specified equipment.

About WIFI

- Frequency: 2412 – 2462MHz
- Max. power = 22.14dbm

About GPS

- GPS (Freq=1575.42MHZ) is operated by the United States government, which is solely responsible for the performance of GPS. Any change to the GPS system can affect the accuracy of all GPS equipment.
- GPS satellite signals cannot pass through solid materials (except glass). When you are inside a tunnel or building, GPS positioning is not available. Signal reception can be affected by situations such as bad weather or dense overhead obstacles (e.g. trees, tunnels, viaducts and tall buildings).

- The GPS positioning data is for reference only.

Federal Communication Commission Interference Statement

For regulatory identification purposes, your device is assigned a model number of N548.



FCC ID: P4Q-N548

This device complies with part 15 of the FCC Rules. Operation is subject to the following two conditions: (1) This device may not cause harmful interference, and (2) this device must accept any interference received, including interference that may cause undesired operation.

This device has been tested and found to comply with the limits for a Class B digital device, pursuant to Part 15 of the FCC Rules. These limits are designed to provide reasonable protection against harmful interference in a residential installation. This equipment generates, uses, and can radiate radio frequency energy, and, if not installed and used in accordance with the instructions, may cause harmful interference to radio communications. However, there is no guarantee that interference will not occur in a particular installation. If this equipment does cause harmful interference to radio or television reception, which can be determined by turning the equipment off and on, the user is encouraged to try to correct the interference by one or more of the following measures:

- Reorient or relocate the receiving antenna.
- Increase the separation between the equipment and receiver.
- Connect the equipment into an outlet on a circuit different from that to which the receiver is connected.
- Consult the dealer or an experienced radio/TV technician for help.

FCC Caution

Any changes or modifications not expressly approved by the party responsible for

compliance could void the user's authority to operate the equipment.

The antenna(s) used for this transmitter must not be co-located or operating in conjunction with any other antenna or transmitter.

FCC RF Radiation Exposure Statement

This equipment complies with FCC radiation exposure limits set forth for an uncontrolled environment. This equipment should be installed and operated with minimum distance 20cm between the radiator & your body.

End users must follow the specific operating instructions for satisfying RF exposure compliance.

WEEE



This product must not be disposed of as normal household waste, in accordance with the EU directive for waste electrical and electronic equipment (WEEE – 2012/19/EU). Instead, it should be disposed of by returning it to the point of sale, or to a municipal recycling collection point.