



# **User Manual**

**N515 entry\_flee**

**N515N advance\_flee**

**N515N regular**

## Table of contents

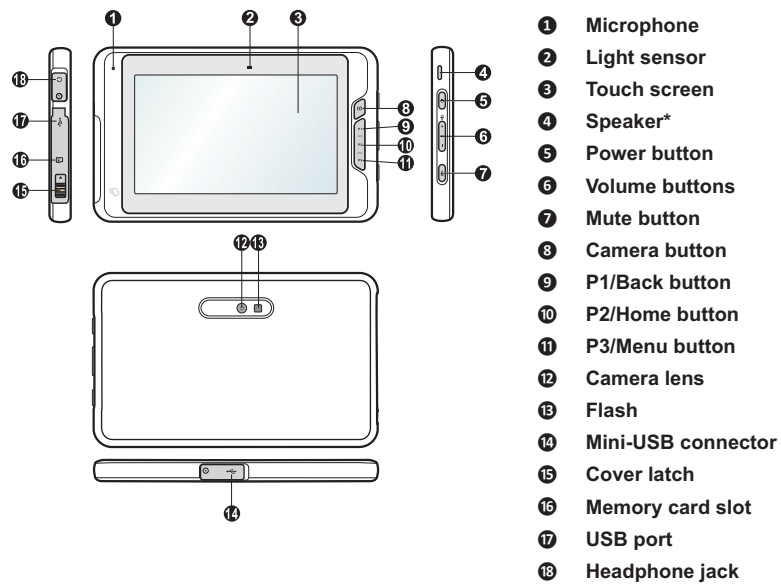
---

Your device at a glance.....	2
Charging the battery .....	4
Turning the device ON and OFF.....	5
Sleep mode .....	5
Airplane mode .....	6
Installing a memory card.....	6
Connecting to a computer.....	7
Connecting a USB device.....	7
Mounting the device.....	7
Navigating on the screen .....	7
Home screen .....	8
Customizing your device.....	9
WLAN connection.....	9
Bluetooth connection.....	10
Caring for your device.....	11
Troubleshooting.....	11
Caring for your device .....	12
Regulatory information.....	13
FCC .....	13
IC.....	14
Safety precautions.....	15

## Your device at a glance

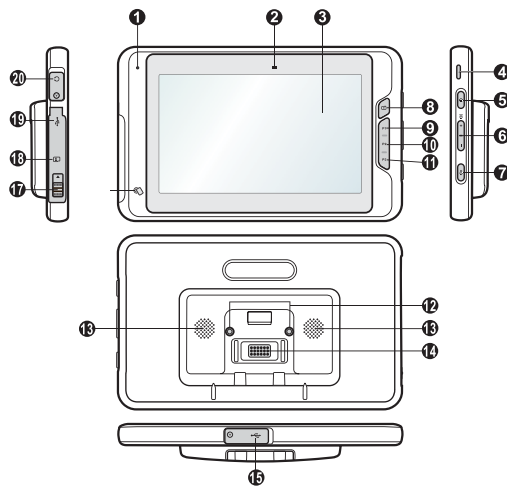
**Note:** Depending on the specific model purchased, the color and look of your device and accessories may not exactly match the graphics shown in this document.

### Regular model:



\*For selected models only

**Fleet model:**



- ① Microphone
- ② Light sensor
- ③ Touch screen
- ④ Speaker\*
- ⑤ Power button
- ⑥ Volume buttons
- ⑦ Mute button
- ⑧ Camera button
- ⑨ P1/Back button
- ⑩ P2/Home button
- ⑪ P3/Menu button
- ⑫ Cradle screws\*
- ⑬ Speaker\*
- ⑭ Dock connector\*
- ⑮ Mini-USB connector
  
- ⑰ Cover latch
- ⑱ Memory card slot
- ⑲ USB port
- ⑳ Headphone jack

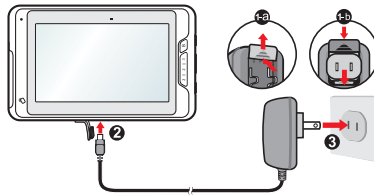
\*For selected models only

## Charging the battery

**Note:** Use only the charger supplied with your device. Use of another type of charger will result in malfunction and/or danger.

When charging the battery for the very first time, you should charge it for at least 8 hours (using the AC charger) with your device turned off.

1. Push the tap outwards, plug the converter to the AC charger and then push the tap inwards to lock the converter in place (❶).
2. Open the connector cover on your device and connect the charger cable to the mini-USB connector (❷).
3. Plug the AC charger into a wall outlet (❸).



**CAUTION:** For optimal performance of the lithium battery:

- ❑ Do not charge the battery where the temperature is high (e.g. in direct sunlight).
- ❑ Recharge the battery when it is nearly discharged. When recharging, make sure that the battery is fully charged. Doing so can extend the battery life.
- ❑ If you will not use the product for a long period of time (over one month) or find the discharge/recharge time has been shortened, be sure to fully discharge the battery first before recharging it. You are also advised to fully discharge and recharge the battery once every 1-2 months.
- ❑ Failure to follow the battery usage instructions could cause damage to your device, battery and even bodily injury or property damage and will void the warranty.

## Turning the device ON and OFF

1. Press the Power button on the right side of the device to turn on your device. Wait for the boot screen to display.
2. The Home screen will display and the device is in Lock mode by default. Drag the Lock icon (🔒) to the right. The device is ready for use.



3. To turn off the device, press and hold the Power button until the option window displays. Then tap **Power off** → **OK**.

Note: You can also choose to restart the device by selecting Restart from the option window.

### Sleep mode

Your device will automatically switch off the screen after 1 minute (by default) of inactivity. You can manually switch off the screen by pressing the Power button briefly.


To resume the screen, press the Power button briefly and then unlock the device by dragging the Lock icon (🔒) to the right.

To change the settings, tap (⋮) on the desktop → **Settings** → **Display** → **Sleep**.

## Airplane mode

When you are in an airplane or in the area where data transferring is not allowed, enable Airplane mode. You will be able to use many of your device's applications (such as playing games or listening music), but all wireless radios, including wireless network (WLAN) and Bluetooth, on the device are turned off – it cannot send or receive data.


To enable Airplane mode: press and hold the Power button until the option window displays. Then tap **Airplane mode**. The ✈ icon in the status bar indicates that Airplane mode is on.

To disable Airplane mode: tap  on the desktop → **Settings** → **More**, and then cancel the selection in **Airplane mode**.

## Installing a memory card

**CAUTION:** Do not apply pressure to the center of the memory card.

Slide the cover latch to open the cover on the left side of the device to locate the memory card slot. Noting the card orientation, hold the card (MicroSD) by the edges and gently insert it into the slot.

To remove a card, first unmount it from the device by tapping  on the desktop → **Settings** → **Storage** → **Unmount SD Card** → **OK**. Then gently push the top edge of the card inwards to release it, and pull it out of the slot.

**Note:** Inserting the card in the reverse direction may cause damage.

**Note:** The manufacturer does not guarantee the product's compatibilities with the storage cards from all manufacturers.

**Note:** If you encounter access problems with your memory card, please visit the website [http://www.sdcard.org/consumers/formatter\\_3/](http://www.sdcard.org/consumers/formatter_3/) and use the "SD Formatter 3.0 for SD/SDHC/SDXC" tool to format your memory card.

## Connecting to a computer

Connect the mini-USB end of the USB cable to your device and the other end to a USB port in your computer.

**Note:** When connected to the computer, your device will not be charged. When data synchronization is in progress, your device will consume instead of charging battery power.

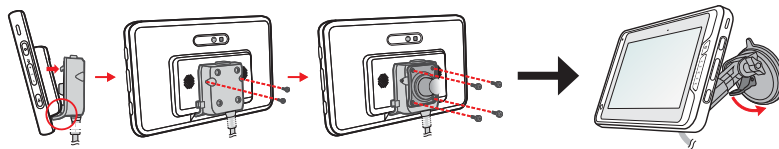
## Connecting a USB device

You can connect an external USB storage (such as a USB flash drive) as an additional storage for the system.

Slide the cover latch to open the cover on the left side of the device to locate USB port.

## Mounting the device

Depending on your model, a cradle and mount may be provided for your device. Follow the illustrations to mount your device.



## Navigating on the screen

To operate your device, touch the screen with your finger .

You can perform the following actions:

- ☑ **Tap:** Touch the screen once with your finger to open items or select onscreen buttons or options.



- ☒ **Tap and hold:** Tap and hold on the desired item to open the pop-up menu that contains the available options for the item (for example, the Copy/Move/Rename options for a file in File Manager)
- ☒ **Drag:** Tap and hold on the item and then move it to the target position without releasing your finger .
- ☒ **Slide:** Drag your finger vertically or horizontally across the screen
  - ☒ Drag to the left/right to switch to the next/previous item on the list.
  - ☒ Drag to the top/bottom to scroll up/down the screen.


Note: Not all slide gestures are applicable to all applications.
- ☒ **Multi-touch gestures:** Move your fingers apart or together on the screen to zoom in or out while viewing a picture or a web page.

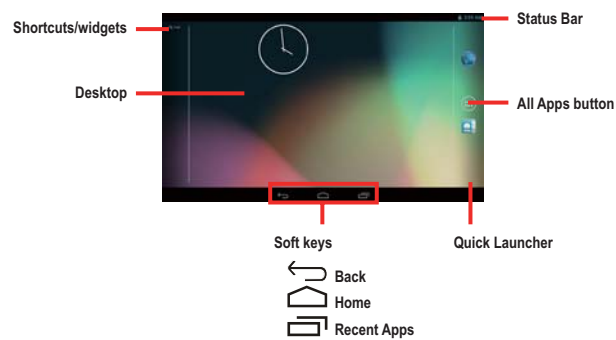
Note: Not all multi-touch gestures are applicable to all applications.
- ☒ **Rotating the screen:** For most applications, you can automatically change the screen orientation, from portrait to landscape and vice versa, by turning the device sideways.

Note: Rotating the screen is not applicable to all applications.

## Home screen

The Home screen is your starting place for tasks, providing quick access to frequently used applications and settings.

To display the Home screen, press the **P2/Home** button or tap  at any time.




The soft keys may be in hidden mode at times. Simply tap where the keys are located to bring out the keys again.

## Customizing your device

You can customise the device through the Settings menu, including personalizing the Home screen, changing the display and sound settings, configuring the connection settings, and more.

To access the Settings menu, tap  on the desktop → **Settings**.


### WLAN connection

1. Tap  on the desktop → **Settings**.
2. In **WIFI**, tap the **OFF/ON** switch to turn WLAN on. The device will automatically scan for available wireless networks.
3. Tap **WIFI** to display the network names and security settings of the detected WLAN networks.

4. Tap a WLAN network to connect.
5. If you select an open network, you will be automatically connected to the network.  
If you select a network that is secured with WEP, enter the key and then tap **Connect**.
6. When your device is connected to a wireless network, the WLAN icon (📶) will appear in the status bar indicating the signal strength (number of bands that light up).

### Bluetooth connection

To pair a Bluetooth device for sharing data:

1. Tap  on the desktop → **Settings**.
2. In **Bluetooth**, tap the **OFF/ON** switch to turn Bluetooth on. The device will automatically scan for available Bluetooth devices.  
Note: By default, your device is not in visible mode when Bluetooth is turned on. If you need to enter visible mode: tap **Bluetooth** and then tap your device name. The default visibility timeout is 2 minutes.
3. Tap **Bluetooth** to display the list of in-range Bluetooth devices.  
Note: You can tap **SEARCH FOR DEVICES** to do a new scanning.
4. Tap a device from the list to initiate pairing.
5. On your device, the passkey is displayed. On the other device, enter the same passkey and then tap **Pair**. Then tap **Pair** on your device to confirm pairing if necessary.

## Caring for your device

### Troubleshooting

Note: If you encounter a problem you cannot solve, contact an authorised service centre for assistance.

#### **Power does not switch on when using battery power.**

The remaining battery power may be too low to run your device. Charge the battery.

#### **Screen responds slowly.**

Make sure that your device is not running out of battery power. If the problem still persists, restart your device.

#### **Screen freezes.**

Restart your device.

#### **Screen is hard to read.**

Make sure that the backlight of the display is set to a high-enough brightness.

#### **Cannot establish a connection with a computer.**

- ☒ Make sure that your device and your computer are both switched on before trying to establish a connection.
- ☒ Make sure that the cable is securely plugged into the USB port on your computer and on your device. Connect the USB cable directly to your computer - do not run the cable through a USB hub.
- ☒ Restart your device before connecting the cable. Always disconnect your device before you restart your computer.

## Caring for your device

Taking good care of your device will ensure trouble-free operation and reduce the risk of damage to your device.

- ☒ Keep your device away from excessive moisture and extreme temperatures.
- ☒ Avoid exposing your device to direct sunlight or strong ultraviolet light for extended periods of time.
- ☒ Do not place anything on top of your device or drop objects on your device.
- ☒ Do not drop your device or subject it to severe shock.
- ☒ Do not subject your device to sudden and severe temperature changes. This could cause moisture condensation inside the unit, which could damage your device. In the event of moisture condensation, allow the device to dry out completely before use.
- ☒ The screen surface can easily be scratched. Avoid touching it with sharp objects. Non-adhesive generic screen protectors designed specifically for use on portable devices with LCD panels may be used to help protect the screen from minor scratches.
- ☒ Never clean your device with it powered on. Use a soft, lint-free cloth to wipe the screen and the exterior of your device.
- ☒ Do not use paper towels to clean the screen.
- ☒ Never attempt to disassemble, repair or make any modifications to your device. Disassembly, modification or any attempt at repair could cause damage to your device and even bodily injury or property damage and will void any warranty.
- ☒ Do not store or carry flammable liquids, gases or explosive materials in the same compartment as your device, its parts or accessories.
- ☒ To discourage theft, do not leave the device and accessories in plain view in an unattended vehicle.
- ☒ Do not expose the device to extreme heat or direct sunlight for prolonged periods. Overheating may damage the device.

## Regulatory information

- For regulatory identification purposes, the product series is assigned a model number of N515(x) (the optional "x" representing a potential model in the product series).

### FCC



#### Federal Communication Commission Interference Statement

This device complies with Part 15 of the FCC Rules. Operation is subject to the following two conditions: (1) This device may not cause harmful interference, and (2) this device must accept any interference received, including interference that may cause undesired operation.

This equipment has been tested and found to comply with the limits for a Class B digital device, pursuant to Part 15 of the FCC Rules. These limits are designed to provide reasonable protection against harmful interference in a residential installation. This equipment generates, uses and can radiate radio frequency energy and, if not installed and used in accordance with the instructions, may cause harmful interference to radio communications. However, there is no guarantee that interference will not occur in a particular installation. If this equipment does cause harmful interference to radio or television reception, which can be determined by turning the equipment off and on, the user is encouraged to try to correct the interference by one of the following measures:

- Reorient or relocate the receiving antenna.
- Increase the separation between the equipment and receiver.
- Connect the equipment into an outlet on a circuit different from that to which the receiver is connected.
- Consult the dealer or an experienced radio/TV technician for help.

#### FCC Caution:

- Any changes or modifications not expressly approved by the party responsible for compliance could void the user's authority to operate this equipment.
- This transmitter must not be co-located or operating in conjunction with any other antenna or transmitter.

#### Radiation Exposure Statement:

This device meets the government's requirements for exposure to radio waves.

This device is designed and manufactured not to exceed the emission limits for exposure to radio frequency (RF) energy set by the Federal Communications Commission of the U.S. Government.

Note: The country code selection is for non-US model only and is not available to all US model. Per FCC regulation, all WiFi product marketed in US must fixed to US operation channels onl .

## IC

This device complies with Industry Canada license-exempt RSS standard(s). Operation is subject to the following two conditions:

- This device may not cause interference.
- This device must accept any interference, including interference that may cause undesired operation of the device.

In order to avoid the possibility of exceeding the IC radio frequency exposure limits, human proximity to the antenna shall not be less than 20cm (8 inches) during normal operation.

Le présent appareil est conforme aux CNR d'Industrie Canada applicables aux appareils radio exempts de licence. L'exploitation est autorisée aux deux conditions suivantes:

- L'appareil ne doit pas produire de brouillage.
- L'utilisateur de l'appareil doit accepter tout brouillage radioélectrique subi, même si le brouillage est susceptible d'en compromettre le fonctionnement.

Afin d'éviter la possibilité de dépasser les limites d'exposition aux fréquences radio de la IC CNR102, la proximité humaine à l'antenne ne doit pas être inférieure à 20 cm (8 pouces) pendant le fonctionnement normal.

## Safety precautions



To prevent possible hearing damage, do not listen at high volume levels for long periods.

### About charging

- Use only the charger supplied with your device. Use of another type of charger will result in malfunction and/or danger.
- This product is intended to be supplied by a LISTED Power Unit marked with "LPS", "Limited Power Source" and output rated + 5 V dc / 2.0 A.
- Use a specified battery in the equipment

### About the charger

- Do not use the charger in a high moisture environment. Never touch the charger when your hands or feet are wet.
- Allow adequate ventilation around the charger when using it to operate the device or charge the battery. Do not cover the charger with paper or other objects that will reduce cooling. Do not use the charger while it is inside a carrying case.
- Connect the charger to a proper power source. The voltage requirements are found on the product case and/or packaging.
- Do not use the charger if the cord becomes damaged.
- Do not attempt to service the unit. There are no serviceable parts inside. Replace the unit if it is damaged or exposed to excess moisture.



### About the battery

- ☒ Use a specified battery in the equipment
- ☒ **CAUTION:** This unit contains a non-replaceable internal Lithium Ion battery. The battery can burst or explode, releasing hazardous chemicals. To reduce the risk of fire or burns, do not disassemble, crush, puncture, or dispose of it in fire or water.
- ☒ Important instructions (for service personnel only)
  - ☒ **Caution:** Risk of explosion if battery is replaced by an incorrect type. Dispose of used batteries according to the instructions.
  - ☒ Replace only with the same or equivalent type recommended by the manufacturer.
  - ☒ The battery must be recycled or disposed of properly.
  - ☒ Use the battery only in the specified equipment

Revision: R00  
(August, 2016)

#### Trademarks

All brand and product names are trademarks or registered trademarks of their respective companies.

#### Disclaimer

Specifications and documents are subject to change without notice

#### Notes

Not all models are available in all regions.

Depending on the specific model purchased, the colour and look of your device and accessories may not exactly match the graphics shown in this document. The screenshots and other presentations shown in this document are for reference only.

