



MiTAC International Corporation

EMC/Safety/RF Assembly Notice in PVT Phase

for

**Project/ Model Name : Magellan RoadMate™
2055**

Date	PCB Rev.	Prepared by	Reviewed by
2010-05-28	R01	Roger Lv	Colin Cheng

Reviewed by					
E/E	Health Wang	M/E	Hode Chen	PMD	Catherine Zheng

A handwritten signature in black ink, appearing to read "Ruey-Yuan Chen", is written over a horizontal line.

Signature

Ruey-Yuan Chen

Manager

Mitac International Corporation

2010-6-21

Part 1: Safety design check comment:

For plastic part must use the fire enclosure above the classes V-1. (Including Mechanical part, PCB board etc.)

Part 3.1 EMC for E/E:

Part 3.2 EMC for M/E:



Figure1.

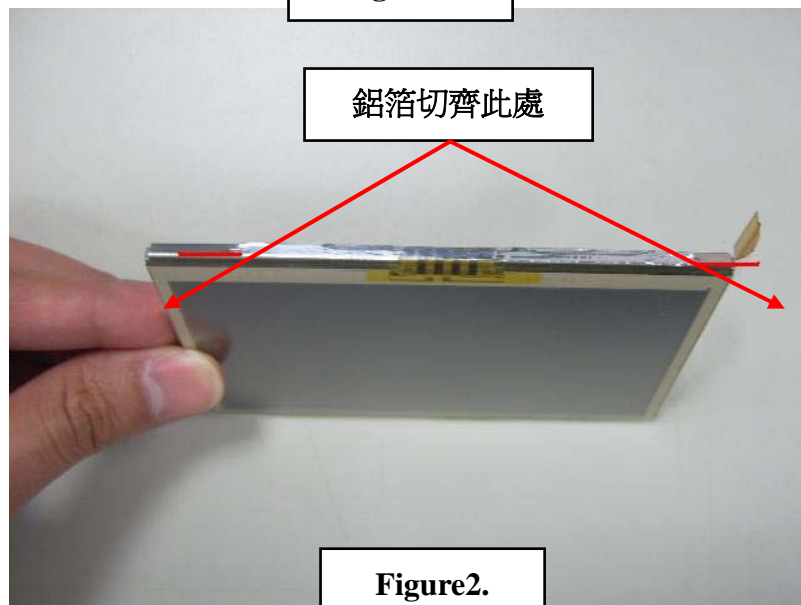


Figure2.

1. LCD add AL-foil 80 x 50 mm (343164700100)反折至 Panel 下緣. (see Figure 1 & 2)

且覆蓋 PANEL 電子元件區域貼 myalr (被此鋁箔覆蓋) 346164700100 TF-MYLAR; PANEL FPC, MANTAS 415A43

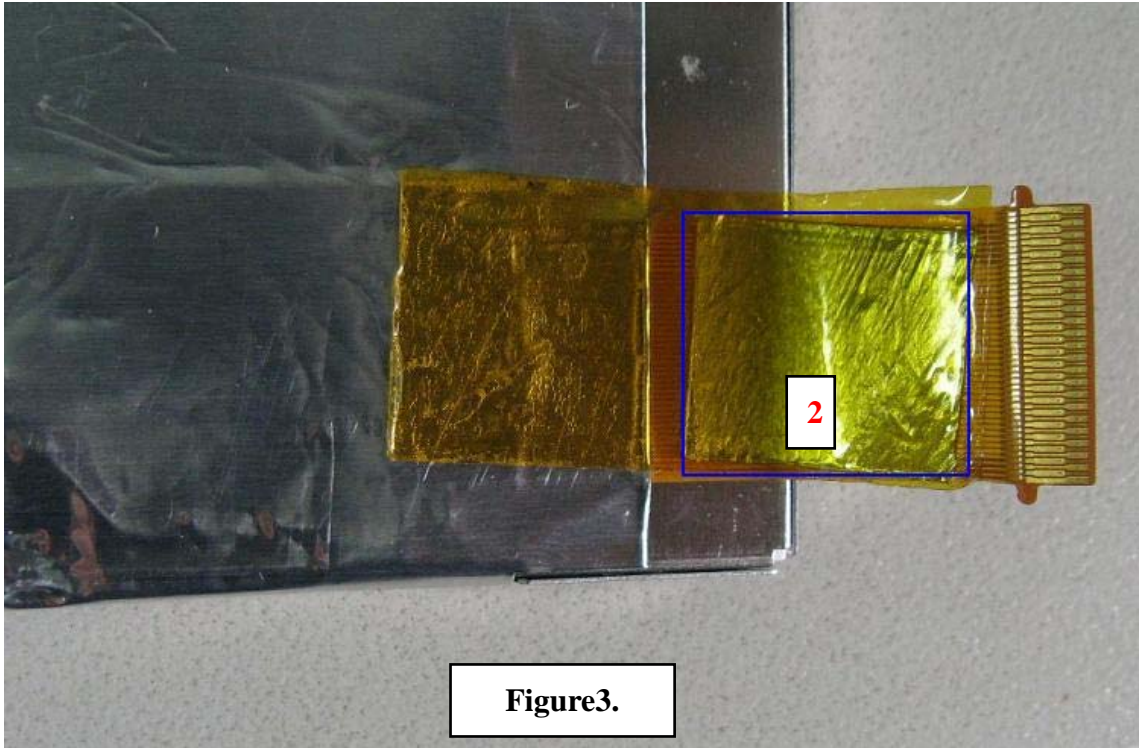


Figure3.

Add AL-foil (10mm x 15mm,PN: 343163100400) on LCD FPC cable . (see Figure 3), 注意不要貼到 LCD 大鋁箔紙，表面貼絕緣膠防短路 (L16 W13.2MM,PN: 346148900600)。

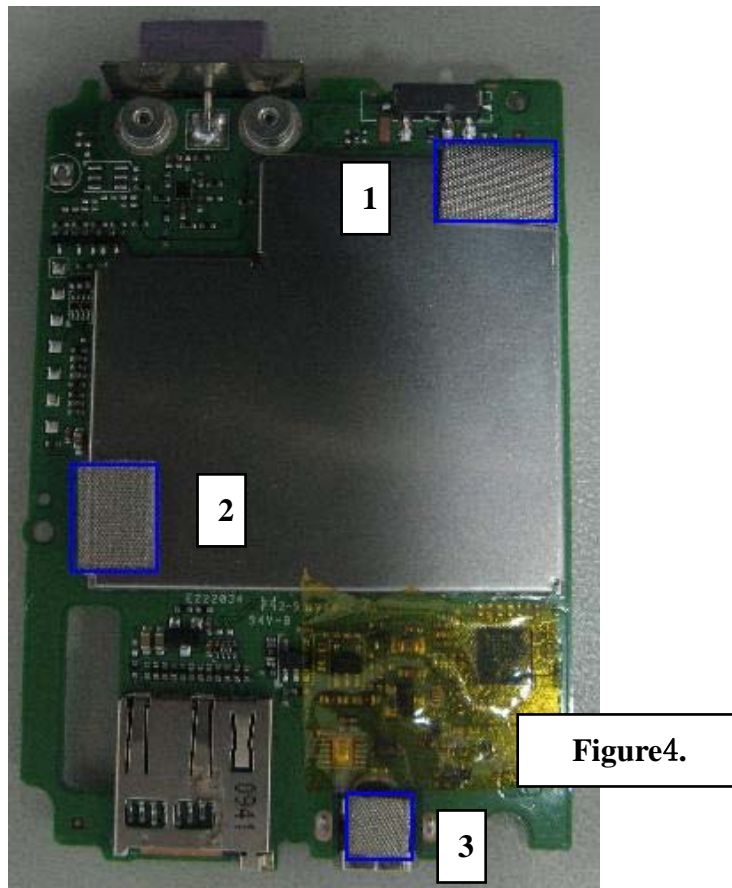
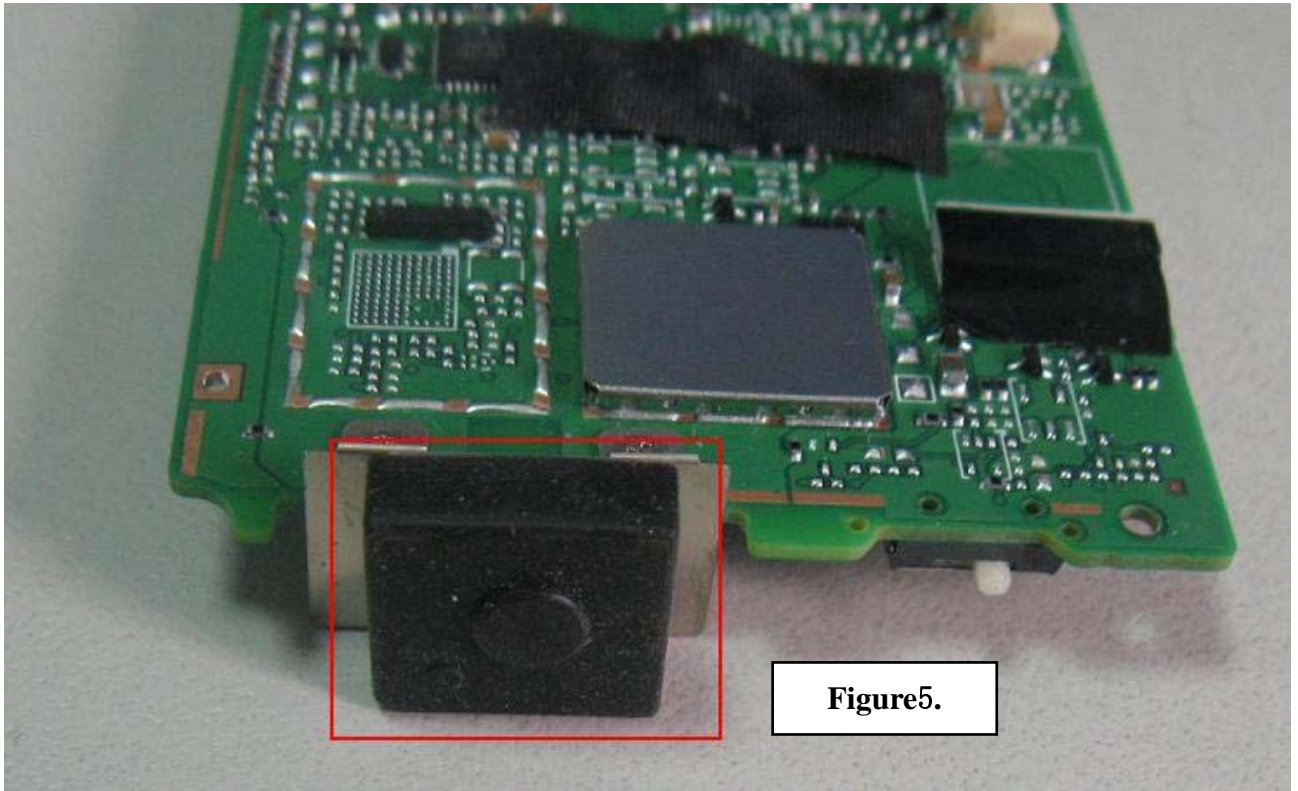
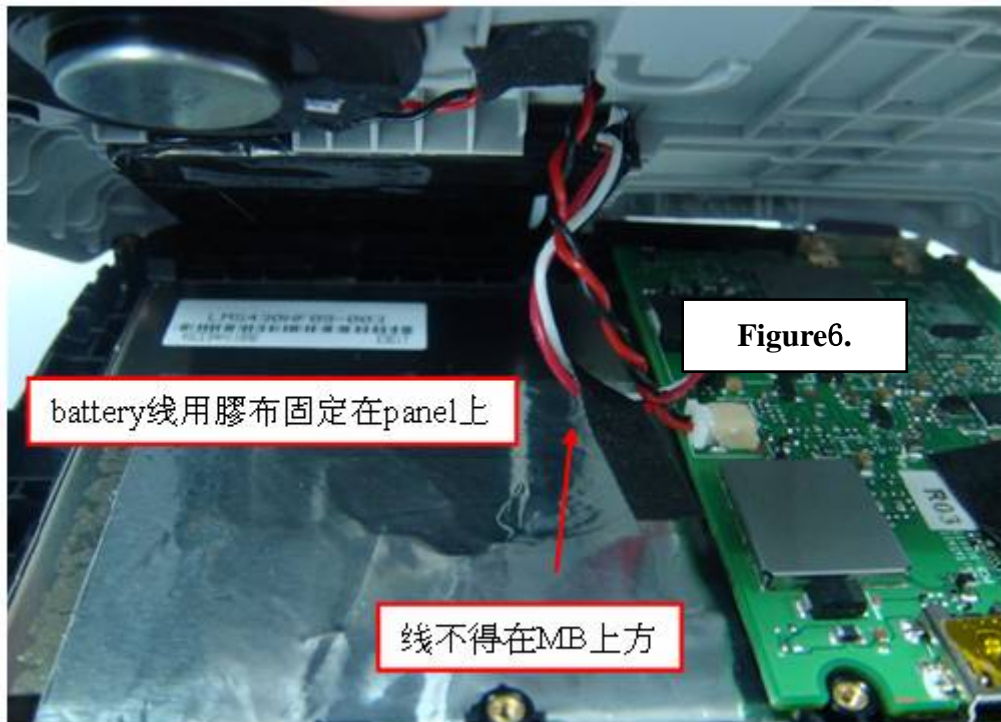


Figure4.

2. Add Gasket 1,2 (10 x 10 T=1.5mm,PN: 346160500400) on CPU shielding. Add Gasket 3 (6(W)*4(L), T=4MM, PN:346146100101) on USB port 如标示框位置 (see Figure 4)



3. Add a GPS antenna isolated(PN: 345173100300) cover for GPS ESD. (see Figure 5)



4. 將電池綫用膠布貼到 Panel 上，避免電池綫繞到 PCB 上面。(see Figure 6)

Part 4.1 RF for E/E: