

— |

| —

Mio C710

Mio DigiWalker

User's Manual

Trademarks

All brand and product names are trademarks or registered trademarks of their respective companies.

Note

The information in this manual is subject to change without notice.

— |

| —



Table of Contents

1	Getting Started	1
1.1	Performing the Initial Start Up	1
1.2	Connecting to AC Power and Charging the Battery.....	2
1.3	Using Your Device in a Vehicle.....	3
	Using the Car Holder.....	3
	Connecting the Car Charger	4
1.4	Understanding Hardware Features	5
	Front Components.....	5
	Back Components.....	6
	Top Components.....	7
	Bottom Components.....	7
2	Basic Skills	9
2.1	Turning On and Off Your Device.....	9
2.2	Operating Your Device	9
2.3	Using a SD/MMC Card.....	10
3	Bluetooth and Dialer	11
3.1	Using Bluetooth	11
	Exploring Bluetooth Devices	12
	Transferring Files via Bluetooth	13
	Using ActiveSync via Bluetooth	15
	Using Intercom via Bluetooth	15
	Partnering with a Hands-free Device	16
	Configuring Bluetooth Settings.....	18
	Using My Shortcuts	20
	Viewing Active Connections.....	21
3.2	Dialer	23
	Connecting a Bluetooth Mobile Phone.....	23
	Placing a Call	24
	Operations During a Call.....	26
	Receiving a Call	27
	Miscellaneous Buttons	28

4	Regulatory Information.....	31
4.1	Regulations Statements	31
	Class B Regulations	31
	European Notice.....	33
4.2	Safety Precautions	34
	About Charging.....	34
	About the AC Adapter	34
	About the Battery.....	35



Before You Begin

Precautions and Notices

- For your own safety, do not operate the controls of the product while driving.
- Use this product prudently. The product is intended to be used only as a navigation aid. It is not for precise measurement of direction, distance, location or topography.
- The calculated route is for reference only. It is the user's responsibility to follow the traffic signs and local regulations along the roads.
- When you get off the car, do not leave your device on the dashboard that is subject to direct sunlight. The overheating of the battery can cause malfunction and/or danger.
- GPS is operated by the United States government, which is solely responsible for the performance of GPS. Any change to the GPS system can affect the accuracy of all GPS equipments.
- GPS satellite signals cannot pass through solid materials (except glass). When you are inside a tunnel or building, GPS positioning is not available.
- A minimum of 4 GPS satellite signals is needed to determine current GPS position. Signal reception can be affected by situations such as bad weather or dense overhead obstacles (e.g. trees and tall buildings).
- Other wireless devices in the vehicle might interfere with the reception of satellite signals and cause the reception to be unstable.

- A car holder is needed when using the device in a car. Be sure to place the device in an appropriate place, so as not to obstruct the driver's view, or deployment of airbags.

Do not mount where the driver's field of vision is blocked.

Do not place unsecured on the dashboard.



Do not mount in front of airbag panels.

Do not mount in front of an airbag field of deployment.

1

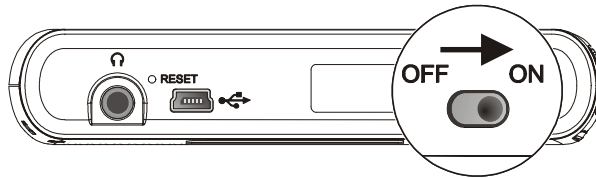
Getting Started

This chapter tells you step by step how to perform the initial startup and introduces the components of your device.

1.1 Performing the Initial Start Up

1. Use a pointed pen to slide the ON/OFF switch to the ON position.

CAUTION: Always leave the ON/OFF switch in the ON position for normal operation.

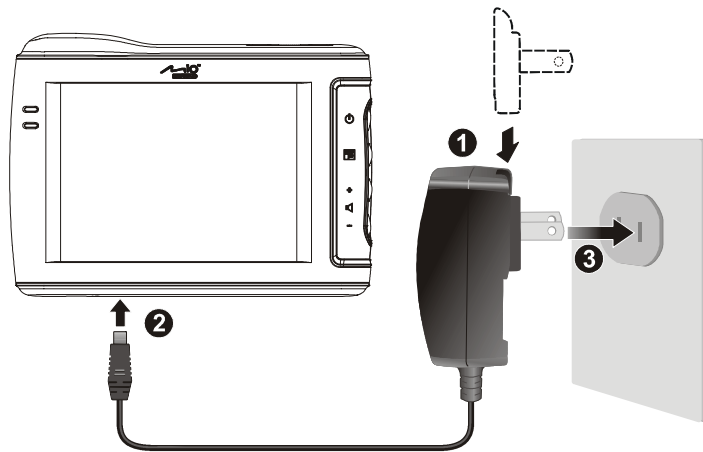


2. Your device turns on and asks you to select your language. Using your fingertip, select a language from the pull-down menu and tap **OK**.
3. The Home screen appears. You can now use your device.

1.2 Connecting to AC Power and Charging the Battery

Fully charge the battery before using your device for the first time.

1. Slide and click the connector converter onto the AC adapter.
2. Connect the adapter cable to the bottom of your device.
3. Plug the AC adapter into a wall outlet.



The charge indicator glows amber when charging is in progress. Do not disconnect your device from AC power until the battery is fully charged, when the charge indicator turns green. This will take a couple of hours.

NOTE:

- When charging the battery for the very first time, you should charge it for at least 8 hours.
- Do not immediately turn on your device after connecting the AC adapter to charge a power-depleted battery. If you need to turn on the device again, wait for at least one minute.
- Depending on your region of purchase, the connector converter may not look exactly the same as the picture shown.

1.3 Using Your Device in a Vehicle

A car holder and a car charger are supplied with your device.

Using the Car Holder

CAUTION:

- Select an appropriate location for the car holder. Never place the holder where the driver's field of vision is blocked.
- If the car's windshield is tinted with a reflective coating, an external antenna (optional) may be needed to route the antenna to the top of the car through a window. When closing the car window, be careful not to pinch the antenna cable. (Cars with an anti-jam window design may automatically leave adequate space as needed.)

The car holder consists of a bracket and a flexible window mount. Use the car holder to fix your device in a vehicle.

1. Assemble the bracket and the window mount.
2. Clean the windshield where you will apply the suction cup.
3. Attach the suction cup firmly to the windshield and press the locking tab to secure the cup.
4. Carefully fit the device into the bracket.



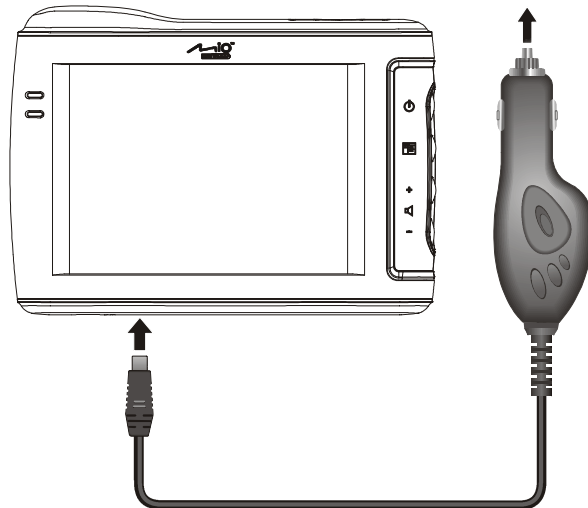
NOTE: Depending upon the specific model purchased, the car holder supplied with your device may not look exactly the same as the picture shown.

Connecting the Car Charger

The car charger supplies power to your device when you are using the device in a car.

CAUTION: To protect your device against sudden surges in current, connect the car charger only after the car engine has been started.

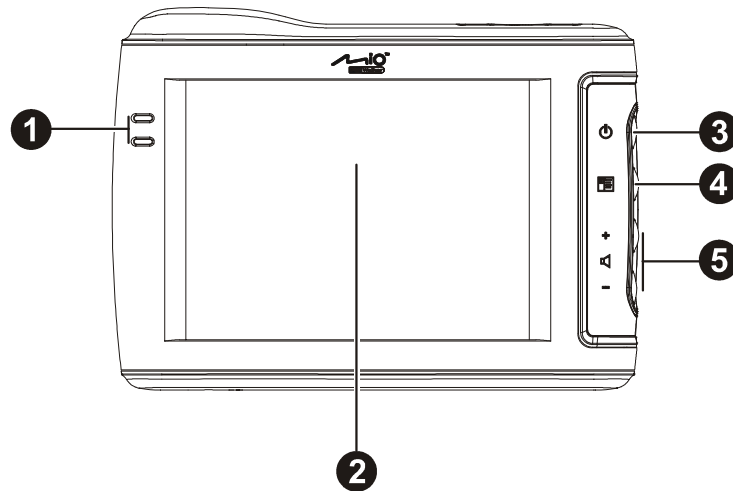
1. Connect one end of the car charger to the power connector of your device.
2. Connect the other end to the cigarette lighter in the car to power and charge your device. The indicator on the car charger lights in green to indicate that power is being supplied to your device.



1.4 Understanding Hardware Features

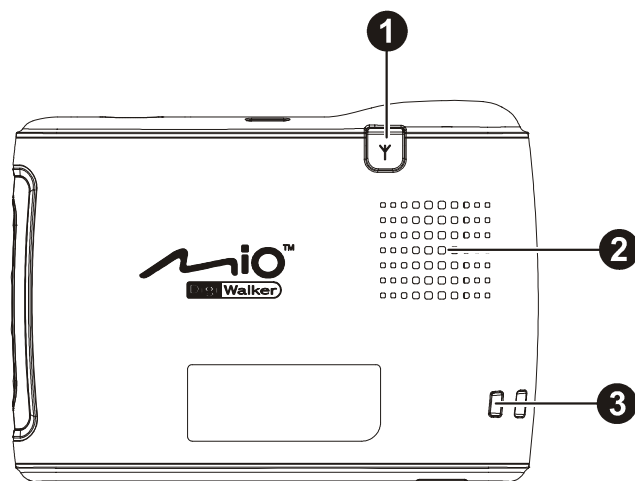
NOTE: Depending upon the specific model purchased, the color of your device may not exactly match the device shown in this manual.

Front Components



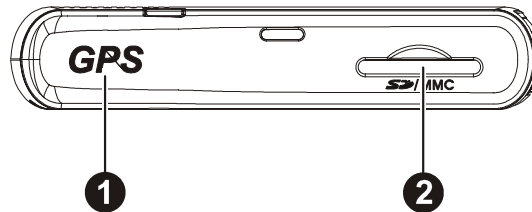
Ref	Component	Description
①	Touch Screen	Displays the output of your device. Tap the screen with your fingertip to select menu commands or enter information.
②	Charge Indicator	Glow bright amber to indicate that the battery is charging, and turns green when the battery is fully charged.
③	Power Button	Turns on and off the device.
④	Program Button	Opens a pre-defined application program.
⑤	Volume Control	Adjusts the volume level of your device.

Back Components



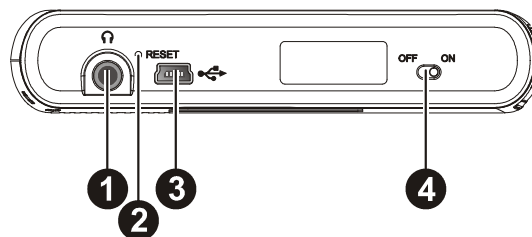
Ref	Component	Description
①	External Antenna Connector	This connector (under rubber dust cover) allows use of an optional external antenna with magnetic mount, which may be positioned on top of the car for better signal reception in areas with poor reception.
②	Speaker	Sends out music, sounds and voice.
③	Hand String Hole	Hand string attaches to this hole.

Top Components



Ref	Component	Description
①	GPS antenna	Receives signals from the GPS satellites overhead. Make sure that it has a clear view of the sky.
②	SD/MMC Slot	Accepts a SD (Secure Digital) or MMC (MultiMediaCard) card for accessing data such as MP3 music.

Bottom Components



Ref	Component	Description
①	Headphone Connector	Connects to stereo headphones.
②	Reset Button	Restarts your device (soft reset).
③	Mini-USB Connector	Connects to the AC adapter or USB cable.
④	ON/OFF Switch	The main power/battery cutoff switch.

2 Basic Skills

This chapter familiarizes you with the basic operations of your device such as using the Home screen and the hardware components.

2.1 Turning On and Off Your Device

Use the power button on the side of your device to turn on and off your device.

When you press the power button to turn off the unit, your device actually enters a suspend state and the system stops operating. Once you turn on the system again, it resumes.

2.2 Operating Your Device

The first time you turn on your device, the Home screen appears. The Home screen is your starting place for various tasks. Use your fingertip to tap a button to start an application or open another menu screen.

You can do the following actions:

- **Tap**
Touch the screen once with your fingertip to open items or select options.
- **Drag**
Hold your fingertip on the screen and drag up/down/left/right or across the screen.
- **Tap and hold**
Tap and hold your fingertip until an action is complete, or a result or menu is shown.

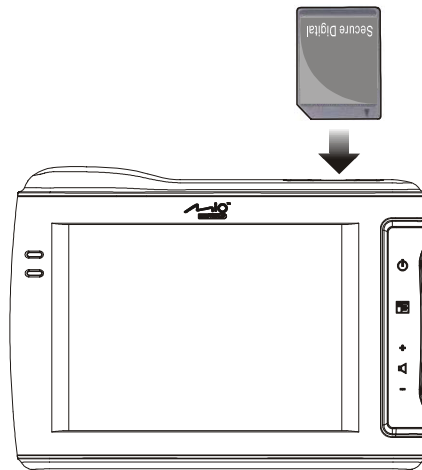
2.3 Using a SD/MMC Card

Your device has a SD/MMC slot where you can insert an optional Secure Digital or MultiMediaCard storage card.

NOTE:

- Make sure that no foreign objects enter the slot.
- Keep a SD or MMC card in a well-protected box to avoid dust and humidity when you are not using it.

To use a SD/MMC card, insert it into the slot, with the connector pointing to the slot and its label facing the front of the device.






To remove a card, first make sure that no application is accessing the card, then slightly push the top edge of the card to release it and pull it out of the slot.

3 Bluetooth and Dialer

3.1 Using Bluetooth

Your device incorporates Bluetooth capability. Bluetooth is a short-range wireless communications technology. Devices with Bluetooth capabilities can exchange information over a distance of about 10 meters (30 feet) without requiring a physical connection.

A Bluetooth program called BlueSoleil is built into your device. The program includes eight Bluetooth application profiles: Headset, HandFree, Intercom, PAN, DUN, SPP, OPP, and FTP.



The  icon at the lower right corner of the screen indicates that the Bluetooth function is enabled. Tap the Bluetooth icon  to open the Bluetooth menu as shown below. From this menu, you can turn Bluetooth radio on and off. When you turn off Bluetooth radio, the icon changes to . To manage Bluetooth, tap **Bluetooth Manager**.



NOTE:

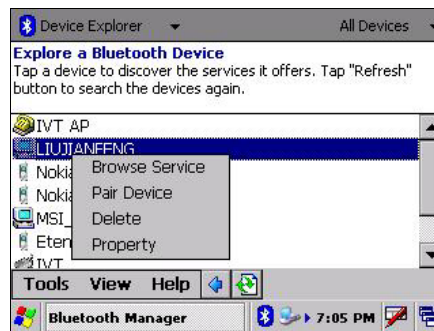
- To use the service of a remote Bluetooth device, make sure that the remote device is in discoverable mode.
- Tapping **Bluetooth HF Phone** in the Bluetooth menu starts the Dialer program.)

Exploring Bluetooth Devices

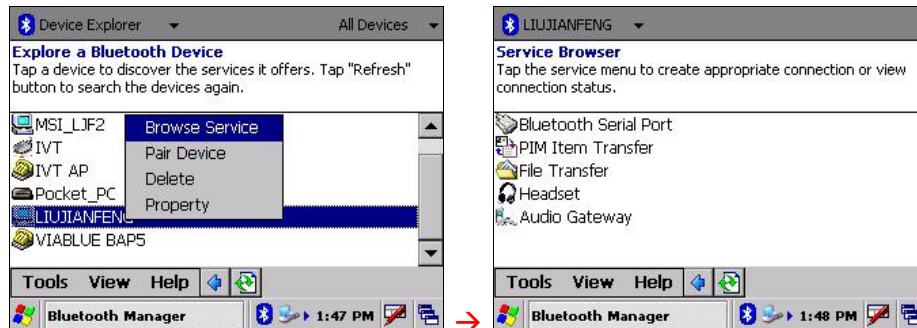
1. Tap the Bluetooth icon  and tap **Bluetooth Manager**.
2. Tap **Explore a Bluetooth Device**. You can tap the **Refresh** button  to search nearby devices.



3. Tap the target device to pop up the function menu.



4. Tap **Browse Service** to browse the services of the target device. The screen displays the services provided by the target device.





5. Tap the service you want to use and tap **Pair Device** to connect.



Transferring Files via Bluetooth

You can transfer files between your device and a remote Bluetooth device.

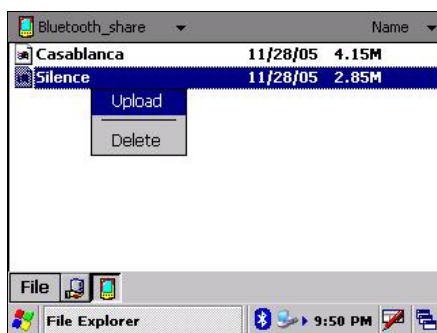
1. Tap the Bluetooth icon  and tap **Bluetooth Manager**.
2. Tap **Transfer Files via Bluetooth**. You can tap the **Refresh** button  to search nearby devices.



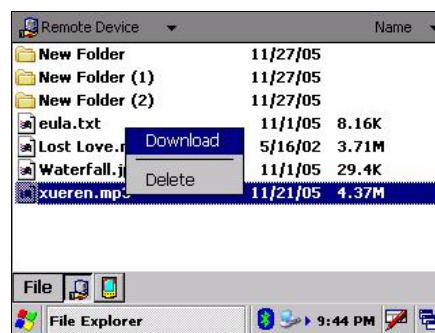
3. Tap the target device to establish a FTP (File Transfer Profile) connection.



4. The File Explorer window appears. To access the remote or local device, use the buttons at the bottom of the screen.
5. Tap and hold on an item to display the shortcut menu. You can use download/upload and delete operations.




Local device

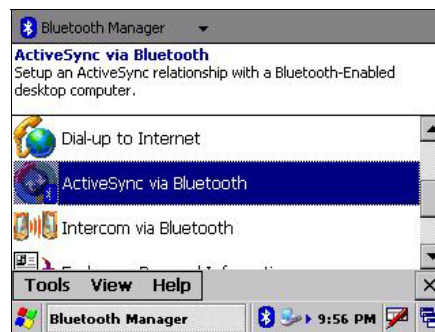


Remote device

Using ActiveSync via Bluetooth

You can use ActiveSync via Bluetooth.

1. Tap the Bluetooth icon  and tap **Bluetooth Manager**.
2. Tap **ActiveSync via Bluetooth**. You can tap the **Refresh** button  to search nearby devices.




3. Tap the target device to pop up the function menu and tap **Partner** to start ActiveSync connection.



Using Intercom via Bluetooth

You can use your device as an intercom to talk with other Bluetooth-enabled intercoms.

4. Tap the Bluetooth icon  and tap **Bluetooth Manager**.

5. Tap **Intercom via Bluetooth**. You can tap the **Refresh** button  to search nearby devices.





6. Tap the target device to establish an ICP connection.



7. A dialog box will appear on your device and the recipient's device. The recipient can choose to answer or ignore your call.

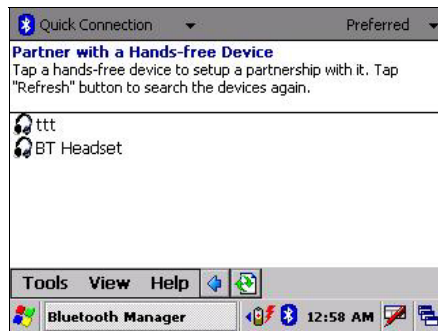
Partnering with a Hands-free Device

You can use your device as a hands-free device for a mobile phone.

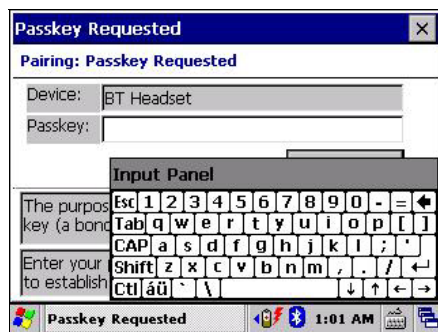
1. Tap the Bluetooth icon  and tap **Bluetooth Manager**.
2. Tap **Partner with a Hands-free Device**. You can tap the **Refresh** button  to search nearby devices.



3. Tap the target device to partner with it.



4. Enter the passkey requested and tap OK.





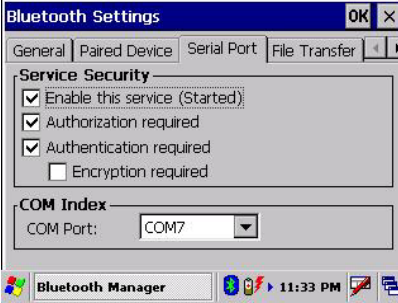
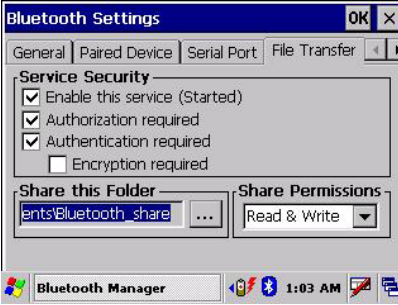
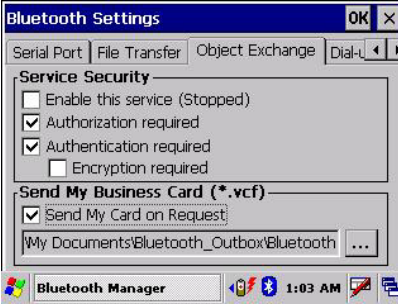
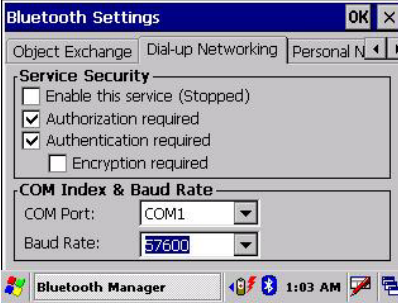
Configuring Bluetooth Settings


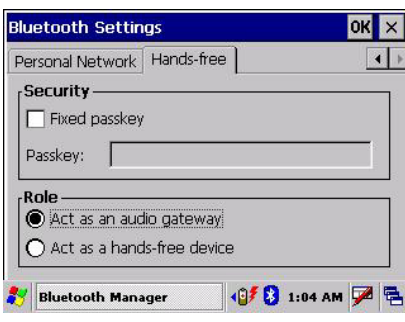
Tap the Bluetooth icon  and tap **Bluetooth Manager** → **Tools** → **Bluetooth Settings**.



There is a total of eight pages to configure the Bluetooth server's and client's attributes.


Page	Descriptions
	<p>General This page lets you edit local device information.</p>
	<p>Paired Device This page lets you view paired devices.</p>

Page	Descriptions
 <p>The screenshot shows the 'Serial Port' tab of the Bluetooth Settings dialog. Under 'Service Security', the options 'Enable this service (Started)', 'Authorization required', and 'Authentication required' are checked, while 'Encryption required' is unchecked. The 'COM Index' section shows 'COM Port' set to 'COM7'.</p>	<p>Serial Port This page lets you configure the SPP attributes such as security and COM port.</p>
 <p>The screenshot shows the 'File Transfer' tab of the Bluetooth Settings dialog. Under 'Service Security', the options 'Enable this service (Started)', 'Authorization required', and 'Authentication required' are checked, while 'Encryption required' is unchecked. The 'Share this Folder' section shows the folder path 'ents\Bluetooth_share' and 'Share Permissions' set to 'Read & Write'.</p>	<p>File Transfer This page lets you configure the FTP attributes such as security, shared folder, and read/write option.</p>
 <p>The screenshot shows the 'Object Exchange' tab of the Bluetooth Settings dialog. Under 'Service Security', 'Enable this service (Stopped)' is unchecked, while 'Authorization required' and 'Authentication required' are checked, and 'Encryption required' is unchecked. The 'Send My Business Card (*.vcf)' section shows 'Send My Card on Request' checked and the file path 'My Documents\Bluetooth_Outbox\Bluetooth'.</p>	<p>Object Exchange This page lets you configure the OPP attributes such as security and business card location.</p>
 <p>The screenshot shows the 'Dial-up Networking' tab of the Bluetooth Settings dialog. Under 'Service Security', 'Enable this service (Stopped)' is unchecked, while 'Authorization required' and 'Authentication required' are checked, and 'Encryption required' is unchecked. The 'COM Index & Baud Rate' section shows 'COM Port' set to 'COM1' and 'Baud Rate' set to '57600'.</p>	<p>Dial-up Network This page lets you configure the DUN attributes such as security, COM port, and baud rate.</p>

Page	Descriptions
 <p>The screenshot shows the 'Bluetooth Settings' dialog box with the 'Personal Network' tab selected. Under the 'Service Security' section, the following options are visible: 'Enable this service (Stopped)' (unchecked), 'Authorization required' (checked), 'Authentication required' (checked), and 'Encryption required' (unchecked). The taskbar at the bottom shows the 'Bluetooth Manager' icon and the time '1:04 AM'.</p>	<p>Personal Network This page lets you configure the PAN attributes such as security.</p>
 <p>The screenshot shows the 'Bluetooth Settings' dialog box with the 'Hands-free' tab selected. Under the 'Security' section, the 'Fixed passkey' option is unchecked, and there is an empty 'Passkey' text field. Under the 'Role' section, 'Act as an audio gateway' is selected with a radio button, and 'Act as a hands-free device' is unselected. The taskbar at the bottom shows the 'Bluetooth Manager' icon and the time '1:04 AM'.</p>	<p>Hands-free This page lets you configure the hands-free device attributes such as functionality and security.</p>

Using My Shortcuts

Once you have established a Bluetooth connection with a remote device, it will be saved as a shortcut. **My Shortcuts** allows you to conveniently use the same service again by tapping the particular shortcut item.

1. Tap the Bluetooth icon  and tap **Bluetooth Manager**.
2. Tap **My Shortcuts**.




3. Tap and hold the desired item. Tap **Connect** to establish a connection again.



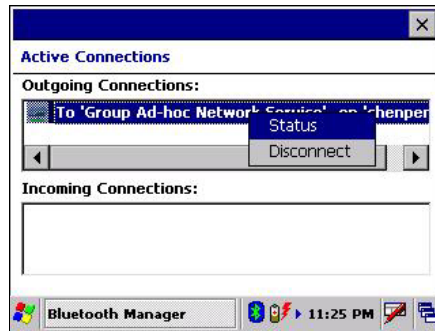
Viewing Active Connections

To view active outgoing and incoming connections:

1. Tap the Bluetooth icon  and tap **Bluetooth Manager**.
2. Tap **Tools** → **Active Connections**.



3. When you tap and hold an item, you can disconnect it or view the status of the connection.



3.2 Dialer

The Dialer program allows you to use your device as a hands-free device for a Bluetooth-enabled mobile phone. You can tap your device to place and receive calls instead of pressing the phone's keypad.

Connecting a Bluetooth Mobile Phone

1. Start the Dialer program.
2. By default, your device will switch to Pair Mode and wait for the pairing action from your mobile phone for 60 seconds. The connection will be established as long as you initiate the pairing process on your mobile phone within this period.

Your Pocket PC will also connect the Bluetooth headset service, if available.

3. You will see the Dialer main screen after the pairing is completed. The status bar at the bottom shows the name of the mobile phone connected.



When you next run the Dialer program, your device will automatically pair with the available one of the last connected mobile phones.


NOTE:

- Your device must be in Pair Mode for the mobile phone to discover. If you need to manually set your device to Pair Mode, tap **Pair Mode** in the main screen.
- Up to 8 sets of paired mobile phones can be stored. A 9th paired mobile phone will replace the oldest one.

Placing a Call

After pairing with your mobile phone, you can place a call using any of the four buttons (**Keypad**, **Contacts**, **Call History**, and **Redial**) on the main screen.

Keypad

Tap the **Keypad** button on the main screen and you can enter the telephone number with the onscreen keypad. After entering the telephone number, tap  to place the call.




NOTE:

- To delete the last digit entered, tap the Backspace button.
- The other two buttons allow you to switch to Contacts and Call History screens.

Contacts

Tap the **Contacts** button on the main screen and you can access the phone numbers (including mobile telephone, work telephone, and home telephone) stored in Microsoft Contacts from the Dialer program.

To call the default telephone number of a contact, tap the contact in the list and tap  to place the call.

You can scroll up and down in the list with the arrow buttons or directly scroll to a group with the alphabetical index.






If there is more than one telephone number for a contact, tapping the contact opens the detailed screen where you can select a number.




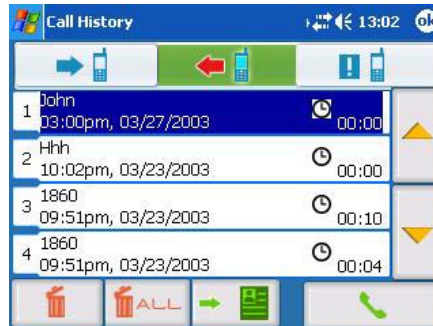
Call History

Tap the **Call History** button on the main screen to display the recent incoming, outgoing, or missed calls together with information such as date, time, and duration of each call.

Tap the respective button (incoming , outgoing , or missed ) to view the last 20 calls of the selected type.

With an item selected, you can tap  to dial the number,  to delete the item, or  to save the phone number to Contacts.

To clear all items in the current list, tap .






Redial


Tap the **Redial** button on the main screen to dial the last number you called or received.



Operations During a Call

During a call, four functions are available:




- If you need to input other numbers, such as an extension number, tap  to open the keypad and tap the desired digits. The keypad will close when you tap the button again or when there has been no input for 5 seconds.
- Tap  to mute your sound so that the other party cannot hear you. To end the mute mode, tap the same button again.
- Tap  to end the call.

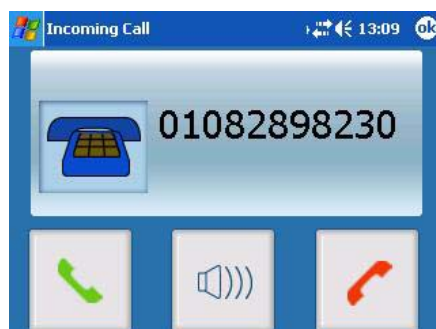
- Tap  to switch the call to your mobile phone. To switch back to your device, tap the same button again.



Receiving a Call

When you have a call after pairing with your mobile phone, you will see the “Incoming Call” screen.

- To accept the call, tap .
- To reject the call, tap .
- To mute the ring tone before receiving or rejecting, tap .



Miscellaneous Buttons

In addition to buttons for placing a call, there are **Connect**, **Pair Mode**, **Others**, and **Exit** buttons on the main screen as described below.



By tapping the **Connect** button on the main screen, you can manually search the last paired mobile phones for an available connection.



By tapping the **Pair Mode** button on the main screen, you can manually set your device to Pair Mode. Within the duration of 60 seconds, you can initiate the pairing process on your mobile phone to discover your device as a car kit.





Others

By tapping the **Others** button on the main screen, you can run the BlueSoleil program. (See section 6.3 for information on BlueSoleil.)



Exit

To close the Dialer screen, tap the **Exit** button on the main screen.

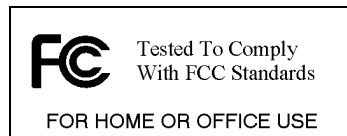
4

Regulatory Information

NOTE: Marking labels located on the exterior of your device indicate the regulations that your model complies with. Please check the marking labels on your device and refer to the corresponding statements in this chapter. Some notices apply to specific models only.

4.1 Regulations Statements

Class B Regulations



USA

Federal Communications Commission Radio Frequency Interference Statement

NOTE:

This equipment has been tested and found to comply with the limits for a Class B digital device pursuant to Part 15 of the FCC Rules. These limits are designed to provide reasonable protection against harmful interference in a residential installation. This equipment generates, uses, and can radiate radio frequency energy and, if not installed and used in accordance with the instructions, may cause harmful interference to radio communications. However, there is no guarantee that interference will not occur in a particular installation. If this equipment does cause harmful interference to radio or television reception, which can be determined by turning the equipment off and on, the user is encouraged to try to correct the interference by one or more of the following measures:

- Reorient or relocate the receiving antenna.
- Increase the separation between the equipment and receiver.

- Connect the equipment into an outlet on a circuit different from that to which the receiver is connected.
- Consult the dealer or an experienced radio/TV technician for help.

Any changes or modifications not expressly approved by the manufacturer could void the user's authority to operate the equipment.

Please note:

The use of a non-shielded interface cable with this equipment is prohibited.

This device complies with Part 15 of the FCC Rules. Operation is subject to the following two conditions:

- (1) This device may not cause harmful interference.**
- (2) This device must accept any interference received, including interference that may cause undesired operation.**

Any changes or modifications (including the antennas) made to this device that are not expressly approved by the manufacturer may void the user's authority to operate the equipment.

FCC RF Radiation Exposure Statement:

- 1. This Transmitter must not be co-located or operating in conjunction with any other antenna or transmitter.**
- 2. This equipment complies with FCC RF radiation exposure limits set forth for an uncontrolled environment. To maintain compliance with FCC RF exposure compliance requirements, avoid direct contact to the transmitting antenna during transmitting.**
- 3. Any changes or modifications (including the antennas) made to this device that are not expressly approved by the manufacturer may void the user's authority to operate the equipment.**

FCC RF Radiation Exposure Statement: This equipment complies with FCC RF radiation exposure limits set forth for an uncontrolled environment. This device and its antenna must not be co-located or operating in conjunction with any other antenna or transmitter.

Canada

Canadian Department Of Communications
Radio Interference Regulations Class B Compliance Notice

This Class B digital apparatus meets all requirements of the Canada Interference-Causing equipment regulations.

Cet appareil numérique de Classe B respecte toutes les exigences du Règlement Canadien sur le matériel brouilleur.

European Notice

Products with the CE marking comply with Radio & Telecommunication Terminal Equipment Directive (R&TTE) (1999/5/EEC), the Electromagnetic Compatibility Directive (89/336/EEC) and the Low Voltage Directive (73/23/EEC) – as amended by Directive 93/68/ECC - issued by the Commission of the European Community.

Compliance with these directives implies conformity to the following European Standards:

EN300328 Electromagnetic compatibility and Radio spectrum matters (ERM); Wideband transmission systems; Data transmission equipment operating in the 2.4GHz ISM band and using wide band modulation techniques; Harmonized EN covering essential requirements under article 3.2 of the R&TTE Directive

EN301489-1: Electronic compatibility and Radio spectrum Matters (ERM), ElectroMagnetic Compatibility (EMC) standard for radio equipment and services; Part 1: Common technical requirements

EN301489-3: Electronic compatibility and Radio spectrum Matters (ERM), ElectroMagnetic Compatibility (EMC) standard for radio equipment and services; Part 3: Specific conditions for Short-Range Devices (SRD) operating on frequencies between 9 kHz and 40 GHz

EN55022: Radio disturbance characteristics

EN55024: Immunity characteristics

EN6100-3-2: Limits for harmonic current emissions

EN6100-3-3: Limitation of voltage fluctuation and flicker in low-voltage supply system

EN60950 / IEC 60950: Product Safety

The manufacturer cannot be held responsible for modifications made by the User and the consequences thereof, which may alter the conformity of the product with the CE Marking.

4.2 Safety Precautions

About Charging

- Use only the AC adapter (PHIHONG, PSC05R-050 or ADP-5FH) supplied with your device. Use of another type of AC adapter will result in malfunction and/or danger.
- Use only the car charger (ATECH, CT-P168SDS-A2.3) supplied with your device. Use of another type of car charger will result in malfunction and/or danger.
- This product is intended to be supplied by a LISTED Power Unit marked with “LPS”, “Limited Power Source” and output rated + 5 V dc / 1.0 A”.
- Use a specified battery in the equipment.

About the AC Adapter

- Do not use the adapter in a high moisture environment. Never touch the adapter when your hands or feet are wet.
- Allow adequate ventilation around the adapter when using it to operate the device or charge the battery. Do not cover the AC adapter with paper or other objects that will reduce cooling. Do not use the AC adapter while it is inside a carrying case.
- Connect the adapter to a proper power source. The voltage requirements are found on the product case and/or packaging.
- Do not use the adapter if the cord becomes damaged.
- Do not attempt to service the unit. There are no serviceable parts inside. Replace the unit if it is damaged or exposed to excess moisture.

About the Battery

- Use a specified charger approved by the manufacturer.

CAUTION: This unit contains a non-replaceable internal Lithium Ion battery. The battery can burst or explode, releasing hazardous chemicals. To reduce the risk of fire or burns, do not disassemble, crush, puncture, or dispose of in fire or water.

- Important instructions (for service personnel only)
 - ✓ **Caution:** Risk of explosion if battery is replaced by an incorrect type. Dispose of used batteries according to the instructions.
 - ✓ Replace only with the same or equivalent type recommended by the manufacturer.
 - ✓ The battery must be recycled or disposed of properly.
 - ✓ Use the battery only in the specified equipment.

根據交通部 低功率管理辦法 規定：

第十二條 經型式認證合格之低功率射頻電機，非經許可，公司、商號或使用者均不得擅自變更頻率、加大功率或變更原設計之特性及功能。

第十四條 低功率射頻電機之使用不得影響飛航安全及干擾合法通信；經發現有干擾現象時，應立即停用，並改善至無干擾時方得繼續使用。

前項合法通信，指依電信規定作業之無線電信。低功率射頻電機須忍受合法通信或工業、科學及醫療用電波輻射性電機設備之干擾。