



MiTAC International Corporation

EMC Notice in DVT Phase

for

Project/ Model Name : BE7977

Date	PCB Rev.	Prepared by	Reviewed by
09,30,2007	R00	Roger.Lv	Colin.Cheng

Reviewed by					
E/E	Sting.Chen	M/E	Jack.Shen	PMD	Victor.Zhu

SIGNED BY:

A handwritten signature in black ink that reads "Joe Yang". The signature is written in a cursive style and is positioned above a horizontal line.

Part 1: EMI E/E solution

Main Board:

Page07: Change LCR22 to bead 120Z/100M

Page19: Change CRV12, CRV19 to CAP 100p

Page11: Change OVT4, OTV5 to CAP 33p

Daughter Board:

Page01: Change CRR14, CRR15 to bead 600Z/100M

R01:

DAUGHTER BOARD: CRR 14 CRR 15 change to RES 22 ohm

Main BOARD: CRR25, CRR26, CRR37, CRR38 change to BEAD 600Z/100m

CRR27 change to RES 0 ohm

OTL3 change to BEAD 300OHM/100MHZ, 25%, -25%, 1206(3216)

OVT4, OTV5 change to CAP 33p

CRC11 change to CAP 0.1u

Part 2 : ME/solution

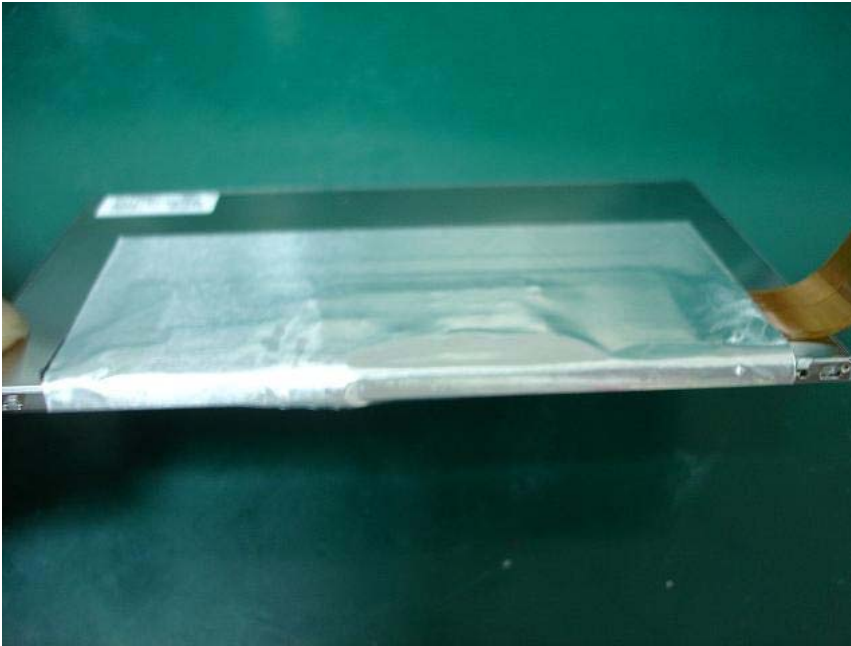
1. Add a mylar L66*W32*0.08T on the LCD FPC

P/N: 346164700100



2. Add a AL-foil L85*W49.2*0.085T on the LCD, cover the LCD FPC

P/N: 343164700100

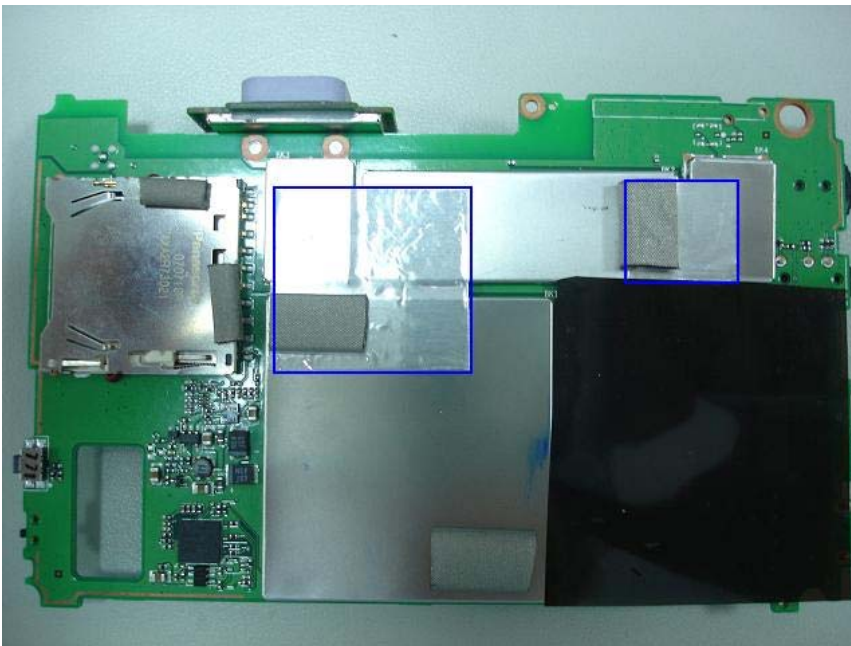


3. Add a AL-foil L42*W30*0.085T on the CPU.GPS shielding

P/N: 343146800107

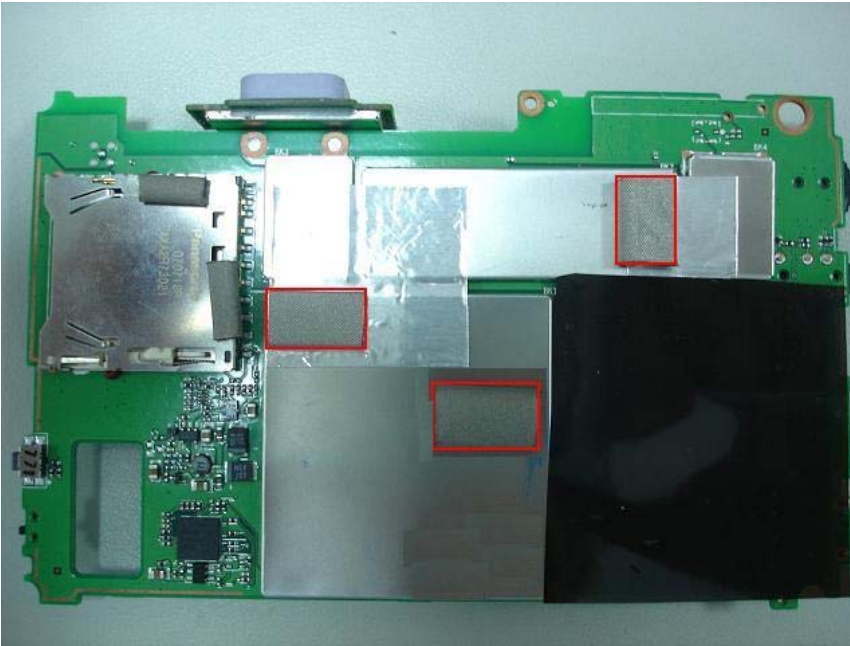
Add a AL-foil L15*W10*0.085T on the GPS and BT shielding

P/N: 346161900400

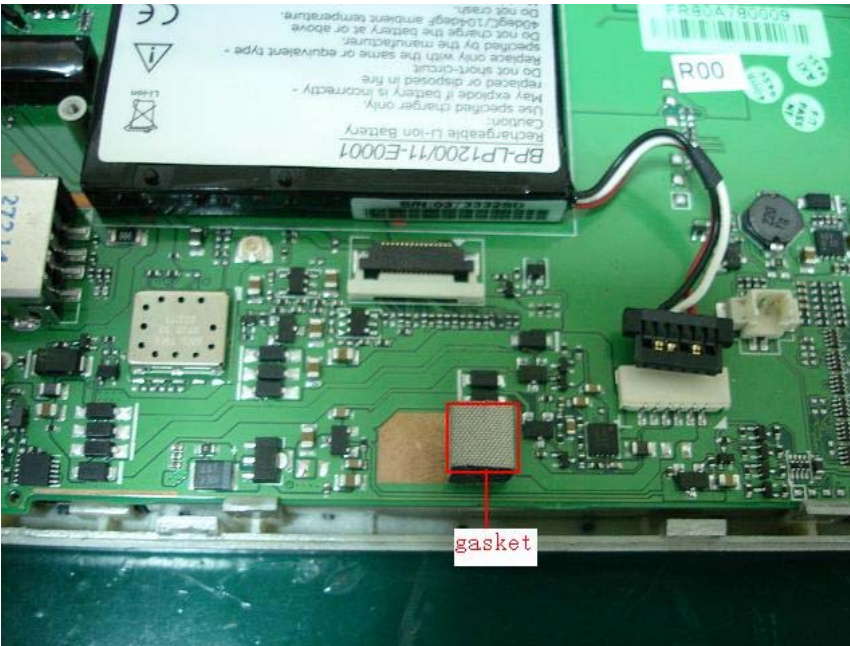


4. Add 3 gaskets L10*W8*3. 5T on the main board shielding.

PN:

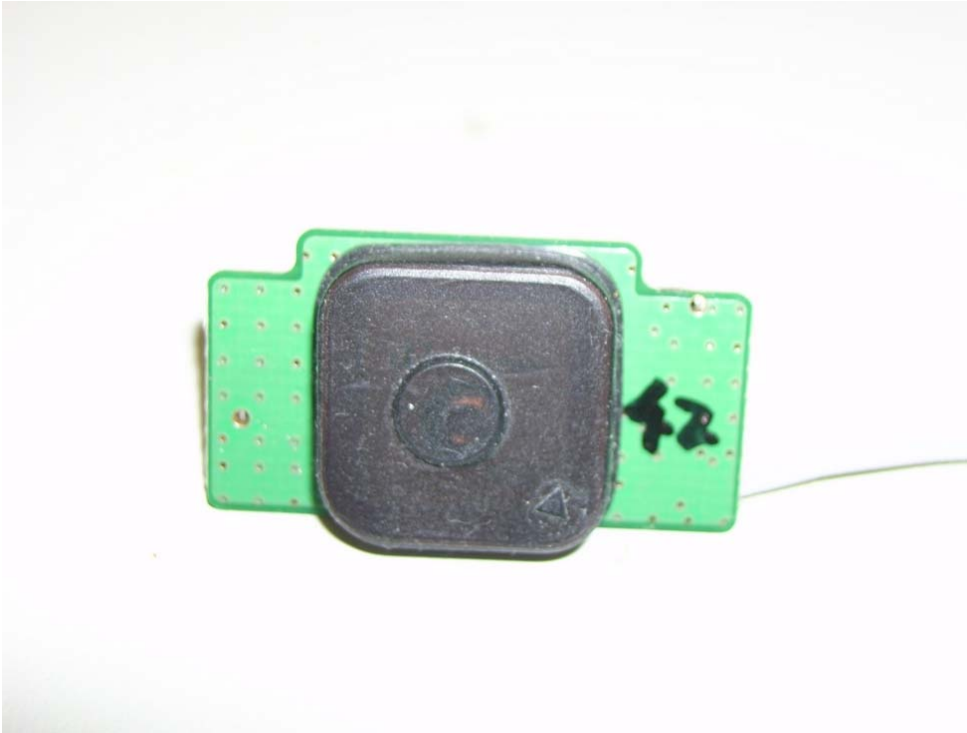


5. Add 1 gasket **L5*W5*7T** on the main board.



6. Add a GPS antenna isolated cover for GPS ESD.

PN :



7.Expose this 2 place at LED board, and add 2 conductive cloth,15mmX20mm, connect LED board to LCD shielding





8. Add 2 gasket at Daughter Board. L5*W8*0.5T



Part 3 : RF solution

Add 2 gaskets on SD slot shielding. Fro RP performance.

