



Made in China

USER GUIDE **ENGLISH**

Bluetooth® wireless keyboard

Introduction	3
1. Safety Precautions	3
2. System Requirement	4
3. Package Content	4
4. Features	4
5. Installation Guide	5-8
6. Specifications	9
7. Troubleshooting	9
8. Declaration	10

**Please note:** Please charge the wireless keyboard for 3 hours before using for the first time

Bluetooth Keyboard Instruction Manual

Introduction

Thank you for purchasing the Bluepioneer

Please fully read and understand the information in this instruction manual prior to using your new Bluetooth Keyboard. This instruction manual should be stored in a safe place for future reference.

Important Safety Precautions

- Do not disassemble, repair or modify the Bluetooth Keyboard. Refer servicing to qualified personnel.
- Keep the Bluetooth Keyboard away from direct sunlight or heat source.
- Do not expose the Bluetooth Keyboard to any liquid or moisture.

**Note:** Please fully charge the battery before first use

System Requirement

Compatible with:

- 1. Apple iPad, iPhone/ Touch with 4.0 OS
- 2. Computers with Windows/Mac or Linux OS
- 3. Sony PlayStation®3

Mobile System Requirements

The device must have built in Bluetooth  
The iPhone Operating System must be 4.0 or higher

Computer/ Laptop System Requirements

Bluetooth-enabled in Windows 98, Me, 2000, XP Vista,Win7  
Bluetooth-enabled in Mac OS



Package Content:

The retail package contains:  
Bluetooth Keyboard  
User Manual

Features:

iPad music toolbar with Play/pause, volume up and volume down ,Forward and Rewind  
Broadcom solution with wireless Bluetooth 2.0 interface  
Standard scissor structure notebook keys  
Unique iPad style design  
Intelligent power source management system helps you conserve battery power  
Built in rechargeable Li-ion battery , support USB charge

Pairing your Bluetooth Keyboard with your device

Press the  “power” button for 1-3 seconds, the green LED will turn on.  
Press the  “pairing button”. The blue LED on the keyboard should now be periodically flashing.  
The Bluetooth keyboard is now in pairing mode and waiting for a connection with your device.

Notice

- 1. When low on power, the green LED will light up for 1 second and blink intermittently.
- 2. When charging, the Red LED will light up, until fully charged.

Recharge the battery

Connect the Bluetooth keyboard to your computer’s USB port with the USB power cable (included).

Configuration and Troubleshooting

Make sure your Bluetooth keyboard is in pairing mode.

iPad



1. Go to Settings>General



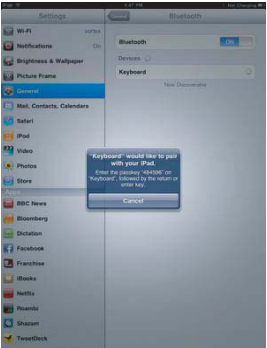
2. Tap Bluetooth ON

3. The Bluetooth Keyboard will show up as MPKB “Not Paired”



4. Tap on it.

- 5. You will now be prompted to enter a PIN number using your keyboard.
- 6. Enter the four digit pin from your keyboard and press ENTER to complete the pairing.



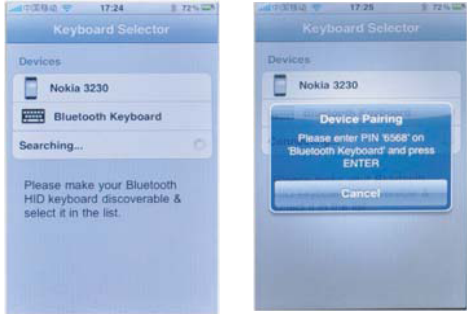
7. The Keyboard should show up under Devices as Connected

iPhone 4.0 OS

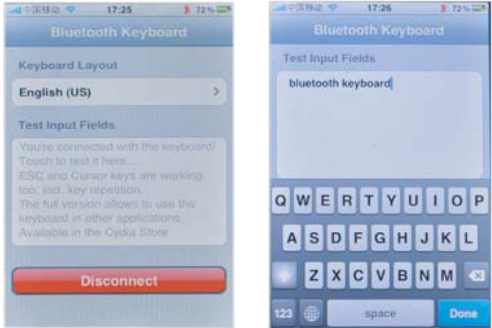


From your iPhone Springboard, tap on the Keyboard icon to open the Keyboard utility.

Open Bluetooth on the iPhone/iPad to search for the keyboard. Tap on the corresponding keyboard device (noted as MPKB) to pair.



You will now be prompted to enter a PIN number using your keyboard. Enter the four digit pin from your keyboard and press ENTER to complete the pairing. You can now test the connection by typing into the Test Input Field.



Pairing your Bluetooth Keyboard with your computer

To pair your Bluetooth Keyboard with your computer, please follow the instructions that came with your Bluetooth hardware and software. Note the keyboard will be listed as MPKB.

Pairing your Bluetooth Keyboard with your PlayStation®3

To pair your Bluetooth Keyboard with your PlayStation®3 visit the playstation.com Knowledge Center searching under “pairing a Bluetooth device”.

Troubleshooting

If you are unable to connect your Bluetooth Keyboard to the device, or the keyboard is not responding normally, please try the following:

- Before you install the Bluetooth Keyboard, please make sure Bluetooth is enabled on your device
- Ensure the Bluetooth Keyboard is within a 10 meter range of your device
- Ensure the PIN is entered correctly (repeat the PIN and press ENTER)

## **FCC Statement**

This equipment has been tested and found to comply with the limits for a Class B digital device, pursuant to part 15 of the FCC rules. These limits are designed to provide reasonable protection against harmful interference in a residential installation. This equipment generates, uses and can radiate radio frequency energy and, if not installed and used in accordance with the instructions, may cause harmful interference to radio communications. However, there is no guarantee that interference will not occur in a particular installation. If this equipment does cause harmful interference to radio or television reception, which can be determined by turning the equipment off and on, the user is encouraged to try to correct the interference by one or more of the following measures:

- Reorient or relocate the receiving antenna.
- Increase the separation between the equipment and receiver.
- Connect the equipment into an outlet on a circuit different from that to which the receiver is connected.
- Consult the dealer or an experienced radio/TV technician for help.

To assure continued compliance, any changes or modifications not expressly approved by the party responsible for compliance could void the user's authority to operate this equipment. (Example- use only shielded interface cables when connecting to computer or peripheral devices).

## **FCC Radiation Exposure Statement**

This equipment complies with FCC RF radiation exposure limits set forth for an uncontrolled environment. This transmitter must not be co-located or operating in conjunction with any other antenna or transmitter.

This equipment complies with Part 15 of the FCC Rules. Operation is subject to the following two conditions:

- (1) This device may not cause harmful interference, and
- (2) This device must accept any interference received, including interference that may cause undesired operation.

## **Caution!**

The manufacturer is not responsible for any radio or TV interference caused by unauthorized modifications to this equipment. Such modifications could void the user authority to operate the equipment.