

User Manual

RC Savage Car

TD2013

Use instruction

- 1) Turn the power switch of car-body to “ON” position;
- 2) When the user control the control stick, the LED light will be turn on; When the light is turning dimmer, the batteries are to be replaced;
- 3) Operate the handle of the controller, the car can move Forward and Backward clockwise. After play, turn the power switches of car-body to “OFF” position.

Note:

This equipment has been tested and found to comply with the limits for a Class B digital device, pursuant to Part 15 of the FCC Rules. These limits are designed to provide reasonable protection against harmful interference in a residential installation. This equipment generates, uses and can radiate radio frequency energy and, if not installed and used in accordance with the instructions, may cause harmful interference to radio communications. However, there is no guarantee that interference will not occur in a particular installation.

If this equipment does cause harmful interference to radio or television reception, which can be determined by turning the equipment off and on, the user is encouraged to try to correct the interference by one or more of the following measures:

- Reorient or relocate the receiving antenna.
- Increase the separation between the equipment and receiver.
- Connect the equipment into an outlet on a circuit different from that to which the receiver is connected.
- Consult the dealer or an experienced radio/TV technician for help.

The manufacturer is not responsible for any radio or TV interference caused by unauthorized modifications to this equipment such modifications could void the user authority to operate the equipment.

Changes or modifications not expressly approved by the party responsible for compliance could void the user's authority to operate the equipment.

This device complies with Part 15 of the FCC Rules. Operation is subject to the following two conditions: (1) This device may not cause harmful interference, and (2) This device must accept any interference received, including interference that may cause undesired operation.

Warning: Changes or modifications to this unit not expressly approved by the party responsible for compliance could void the user's authority to operate the equipment.

MerchSource LLC

Address: **15 Cushing Ave Irvine CA 92618.**

Phone, Fax: 949-900-0924, 949-707-2780

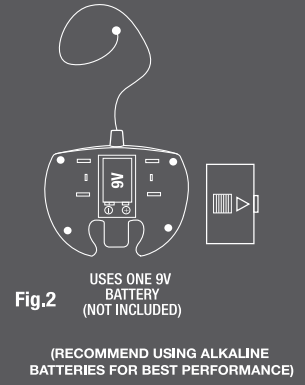
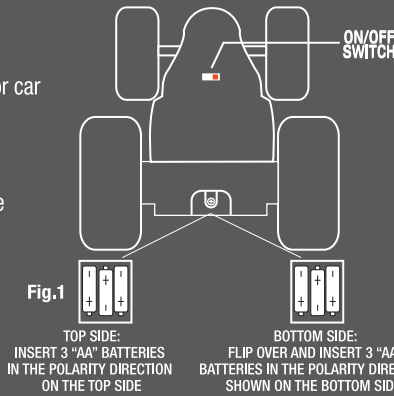
STREET SAVAGE®

RADIO CONTROLLED STUNT VEHICLE

BATTERY INFORMATION

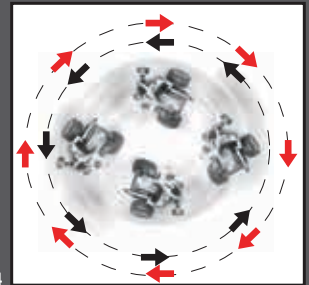
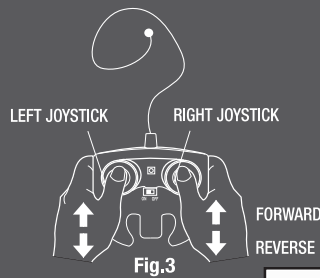
The operation requires 6 "AA" 1.5V (not included) alkaline batteries for car and one 9V battery for remote control (not included).

- Carefully remove items from package.
- Locate the battery compartment on the back of each item.
- Unscrew latch on bottom of car to release battery pack and replace batteries following the correct polarities (Fig.1).
- Replace the battery compartment door.
- Slide open the battery compartment door of the controller.
- Insert the 9V battery following the correct polarities (Fig.2).
- Replace the battery compartment door.



SAFETY PRECAUTIONS

- Do not operate during thunderstorms or rain.
- Avoid water, sand and snow when operating your car.
- Do not submerge car or controller in water.
- Never operate your car on the street or highway.
- Adult supervision is recommended when operating this car.
- Remove all batteries when not in use to avoid accidental operation.
- Never operate your car in a confined or crowded area, and do not use people or animals as obstacles.
- Do not run your car into furniture, objects or hard surfaces, as this will cause damage to both the objects and the car.
- Keep fingers, hair and loose clothing away from the tires, gears and motor while the car is switched to "ON".
- Do not leave car or transmitter near sources of heat or under direct sunlight for long periods of time.
- Do not leave car or transmitter outside overnight. Dampness is harmful to interior components.



PERFORMING STUNTS

- Switch both car and the controller buttons to "ON" position.
- Use the left joy stick to make the left wheel move forward and reverse.
- Use the right joy stick to make the right wheel move forward and reverse (Fig.3).

1. SPECTACULAR SPINS.

To spin the Street Savage 360°, run the car and push up the RIGHT joystick and simultaneously push down the LEFT joystick or push up the RIGHT joystick and simultaneously push down the LEFT joystick depending on the chosen spin direction (Fig.4).

2. AWESOME CORNERING

To take extremely sharp turns or maneuver a 180° or 360° turn, run the car and push the RIGHT and the LEFT joystick then release the RIGHT or the LEFT joystick to steer left or right (Fig.5).

3. WILD WHEELIE

To make a wheelie, run the car and push BOTH joysticks forward. The car will stand up on two wheels. Release slowly the RIGHT or the LEFT joystick to steer (Fig.6).

4. TWO WHEEL SPINS

To make a two wheel spin, run the car at full speed to make a wheelie and then suddenly release the RIGHT or the LEFT joystick to spin on two wheels (Fig.7).

Fig.6



Fig.7



NOTE: This equipment has been tested and found to comply with the limits for a Class B digital device, pursuant to Part 15 of the FCC Rules. These limits are designed to provide reasonable protection against harmful interference in a residential installation. This equipment generates, uses, and can radiate radio frequency energy and, if not installed and used in accordance with the instructions, may cause harmful interference to radio communications.

However, there is no guarantee that interference will not occur in a particular installation. If this equipment does cause harmful interference to radio or television reception, which can be determined by turning the equipment off and on, the user is encouraged to try to correct the interference by one or more of the following measures:

- Reorient or relocate the receiving antenna.
- Increase the separation between the equipment and receiver.
- Connect the equipment into an outlet on a circuit different from that to which the receiver is connected.
- Consult the dealer or an experienced radio TV technician for help.

BATTERY WARNING:

- Do not mix old and new batteries.
- Do not mix alkaline, standard (carbon-zinc), or rechargeable (nickel-cadmium) batteries.
- Insert batteries using the correct polarity. Do not short-circuit the supply terminal.
- Remove batteries when not in use. Recycle or dispose of exhausted batteries according to federal, state, and local laws. Do not dispose of batteries in a fire - they may leak or explode.
- Only use manufacturer specified battery(ies), charger(s) and/or adapter, if applicable, specified by the manufacturer.
- Always use, replace, and recharge (if applicable) batteries under adult supervision.

KEEP THIS PACKAGE FOR REFERENCE AS IT CONTAINS IMPORTANT INFORMATION.

WARNING: Changes or modifications not expressly approved by the party responsible for compliance could void the user's authority to operate the equipment

This device complies with Part 15 of the FCC Rules. Operation is subject to the following two conditions: (1) this device may not cause harmful interference, and (2) this device must accept any interference received, including interference that may cause undesired operation.

©2013 MerchSource, LLC. Blue Hat Toy Company, Blue Hat Toy Company logos and Street Savage are trademarks of MerchSource, LLC, used under license. All rights reserved.

Distributed by MerchSource, LLC

US Pat. No. 6,540,583; China Pat. No. ZL2008330049166.8.

For technical support, please visit www.msccustomer-care.com

1646970 (00000)



6 942021 30974 2

Made in China

The artwork and design of this package are protected by US copyright law and may not be reproduced, distributed, displayed, published or used for any purpose without prior written permission. It is not permitted to alter, remove or reproduce any trademarks or copyright notice from this package.