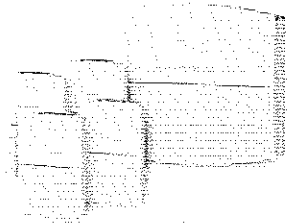


SC1000Xe Small Office Solution

Dual Band Indoor Wireless Coverage System

New SpotCell system to address the coverage challenges of diverse building layouts of smaller Commercial areas

	Cellular	PCS
Frequency Band	UL: 824 - 849 MHz DL: 869 - 894 MHz	UL: 1850 - 1910 MHz DL: 1930 - 1990 MHz
Operator sub-bands	Operator Specific	
Primary sub-band	A or B or (A and B)	5, 10, 15, 20 MHz
Secondary PCS (split-band) options		5, 10, 15, 20 MHz
Formats Supported	GSM, CDMA, 1XRTT, 1XEVD0, UMTS, WCDMA, HPSA and HSPA+, LTE	
Typical Coverage Area	10,000 sq ft (2,300 m2) for One Coverage Unit (CU) and 25,000 sq ft (10,000 m2) for system	
System Gain	UL: 0 to +80 dB maximum	DL: 0 to +80 dB maximum
System Stability Margin (fully adaptive)	> 10 dB	
Downlink Operating Range (receive isotropic power)	-95 to -45 dBm	
Maximum Input Level (receive isotropic power)	UL: -10 dBm maximum DL: -45 dBm maximum	
Output Level – EIRP (fully adaptive)	UL: +30 dBm maximum (composite) DL: +4 dBm maximum (composite)	
Power Consumption	< 50 W	(Single CU)



Fully integrated dual band 850 MHz and 1900 MHz In-building systems. Supports voice and data: GSM, CDMA, 1XRTT, 1XEVD0, UMTS, WCDMA, HPSA and HSPA+, LTE

Physical	DU	CU
Operating Temperature	-40° to 131°F (-40° to 55°C)	32° to 104°F (0° to 40°C)
Size (w x h x d)	14 x 12.5 x 3 in (36 x 31.5 x 8 cm)	6 x 9.25 x 1.75 in (15.5 x 23.5 x 4.75 cm)
Weight	12 lbs (5.5 kg)	2 lbs (1 kg)
RF Connectors	Type F: Coverage Port (weatherproof)	Type F: Donor Port Type F: Extension Antenna Port
RF Cable	Supports up to 82 ft (25m) RG-6 cable between Donor and Coverage Units Supports up to 320 ft (50m) RG-11 cable between Donor and Coverage Units	
Optional RF Cable	Plenum rated also available	
Power Supply	Universal power adapter (90 - 260 VAC, 47 - 63 Hz)	

Contact:

Toll Free in North America: 1-866-704-9750

Telephone: 613-591-1662

www.spotwave.com

info@spotwave.com