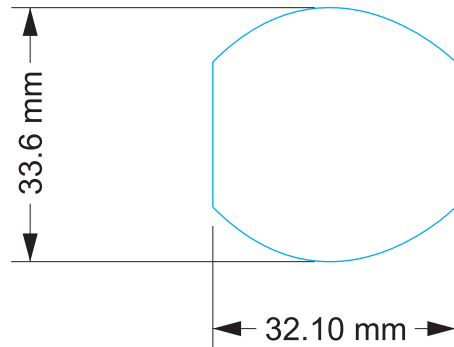




## LABEL ARTWORK



## REFERENCE DIMENSIONS


### NOTES:


#### SERIAL NUMBER CODING METHOD:

1. TYPE STYLE FOR VARIABLE INFORMATION TO BE BLACK, 6 POINT SIZE IN AN APPROVED FONT, SUCH AS HELVETICA BOLD CONDENSED, ARIAL BOLD, OR COURIER BOLD.
2. REFER TO ES 19-1 FOR SERIALIZATION PROCEDURE.
  - A.) A THREE CHARACTER PREFIX (NUMERIC OR ALPHA-NUMERIC) TO DEFINE THE CATALOG NO. (**M38**)
  - B.) ONE ALPHA CHARACTER (A-Z) FOR SPL BREAKS (**A**)
  - C.) ONE CHARACTER NUMERIC (0-9) OR ALPHA (A-Z) FOR MANUFACTURING PLANT LOCATION (**9**)
  - D.) TWO DIGITS (00-99) FOR THE YEAR OF MANUFACTURE
  - E.) TWO DIGITS (01-52) FOR THE WEEK OF MANUFACTURE
  - F.) FIVE DIGITS (00001-99999) FOR INDIVIDUAL UNIT SERIALIZATION
  - G.) ONE CHARACTER SUFFIX (ALPHA-NUMERIC) TO DEFINE THE SUPPLIER (**A**)
  - H.) THE DATE CODE AND SERIAL NUMBER (IF ANY) MUST BE PRINTED BENEATH THE LAMINATION.

**EDITION: A**

TITLE: NAMEPLATE

<b>REVISION HISTORY</b>		<b>DOC SIZE: A4</b>	
		Dimensional Tolerance: All Dimensions + or - 1/8" Bar Code: Per ES-4-16 If Shown Note: Some Tool Art Contains Additional Blank Screens for Definition & Shadow Fill	
DRAWING	01	E.C.N. #	MM006039
ISSUED DATE	05/21/2021		
 MILWAUKEE ELECTRIC TOOL CORPORATION 1315 WEST LEBANON ROAD • BROOKFIELD, WI 53005			

	<b>PART NO.</b>	01616000101K	<b>CURRENT VERSION</b>	01	<b>MATERIAL</b>									
	<b>DWN BY</b>	NG	<b>ITEM ID NO.</b>	MM00249654	<b>CORE:</b> 2mil UL Matte Silver Foil									
	<b>APP BY</b>		<b>SIZE</b>	33.6 x 32.1 (±0.2mm)	<b>LAMINATION:</b> Matte PP									
	<b>DATE</b>	05/21/2021			<b>ADHESIVE:</b> 2 MILACRYLIC BASED SYSTEM FOR USE ON POLYCARBONATE, NYLON, AND POLYPROPYLENE.									
<b>MILWAUKEE PART NUMBER</b>		12252321	<b>SCALE</b>	100%	<b>MUST BE A UL RECOGNIZED AND C.S.A. APPROVED MARKING AND LABELING SYSTEM.</b>									
Approved By: C.Turner E.Guo	Approved By:	Approved By:	Approved By: M.Hickok		<b>COLOR</b>									
Mechanical Engineer / Graphic Designer	Electrical Engineer	Quality Assurance	Chief Graphic Designer / Engg, Manager		White + Black + PMS 186C Total : 3C <table border="1"> <tr> <td>White</td> <td>Black</td> <td>Pantone 186C</td> </tr> <tr> <td>C</td> <td>M</td> <td>Y</td> </tr> <tr> <td></td> <td></td> <td>K</td> </tr> </table>	White	Black	Pantone 186C	C	M	Y			K
White	Black	Pantone 186C												
C	M	Y												
		K												