



**Radiated Spurious Emissions  
Results:**

**AEMC000048 – Annex 4**

**Applicant:**

**Arrista Technologies Inc.  
5-55 Henlow Bay  
Winnipeg, MB, CA  
R3Y 1G4**

**Equipment Under Test (EUT):**

**iDEN  
Bi-Directional Signal Amplifier**

**MODEL:**

**CR300**

**FCC ID:**

**P35SH2U64GG**

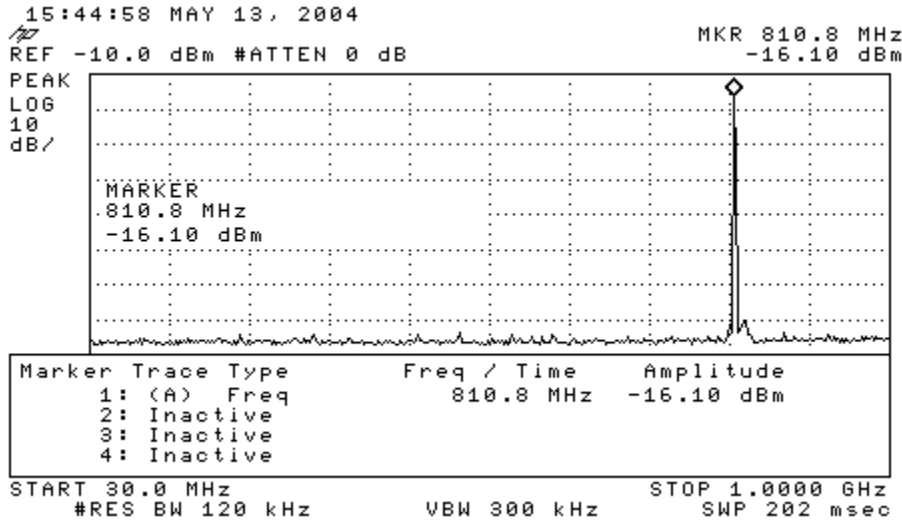
**IN ACCORDANCE WITH:**

**FCC PART 2,  
FCC PART 90, SUBPART I & S  
Private Land Mobile Radio Service**

# 1. RADIATED SPURIOUS FIELD STRENGTH OF EMISSIONS

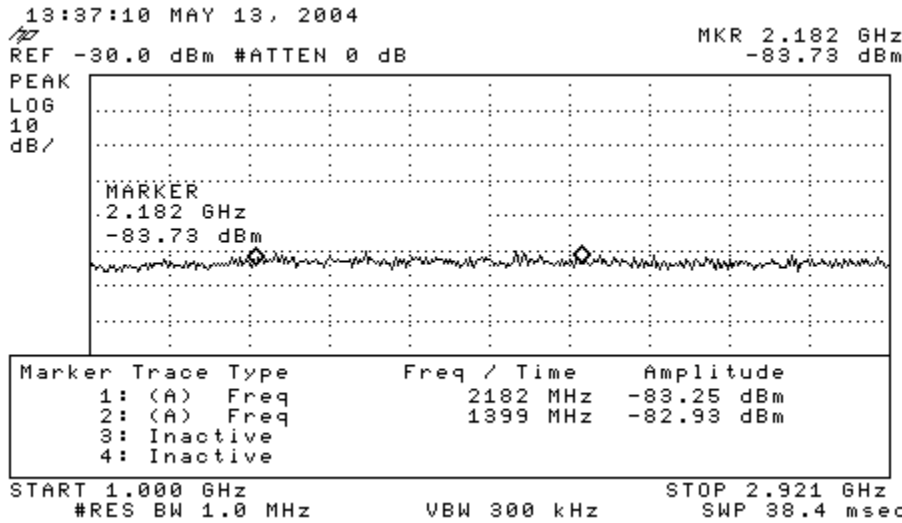
## 1.1. PLOT DATA

### Radiated Emissions; Uplink; 806 MHz Fundamental



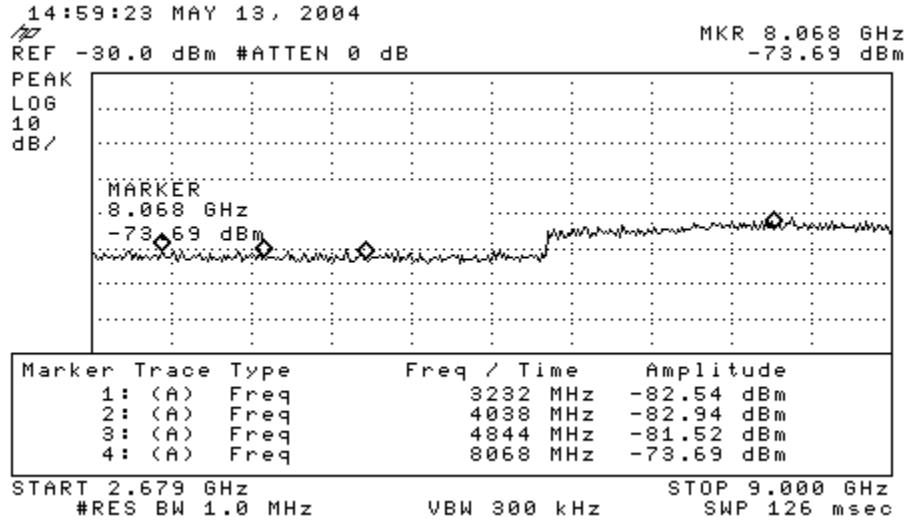
RT

### Radiated Emissions; Uplink; 806 MHz



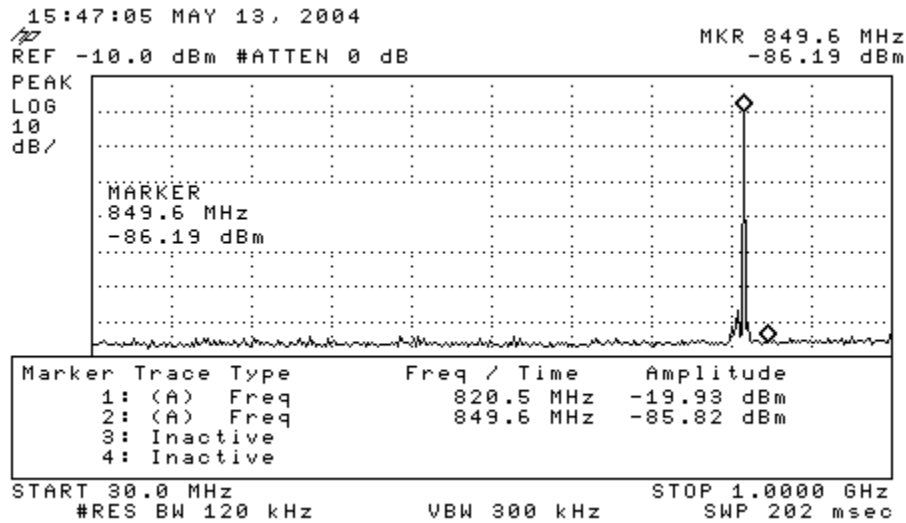
RT

**Radiated Emissions; Uplink; 806 MHz**



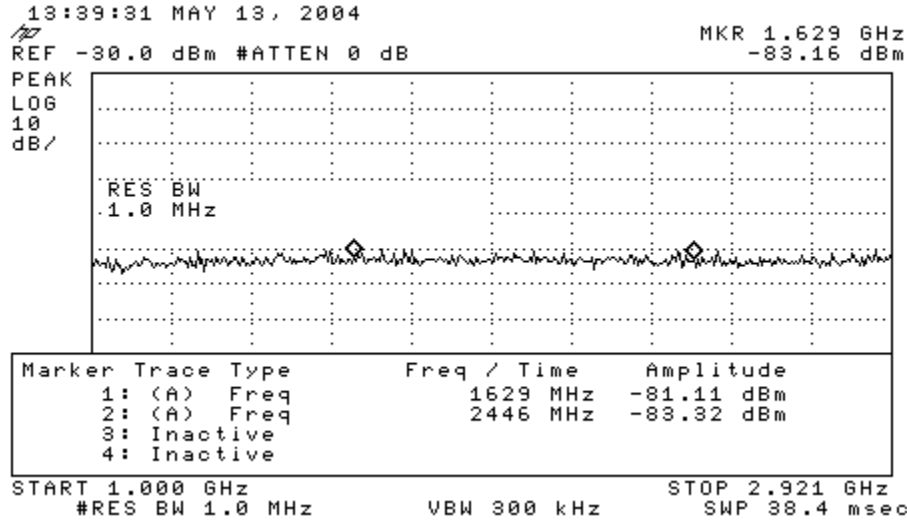
RT

**Radiated Emissions; Uplink; 815 MHz Fundamental**



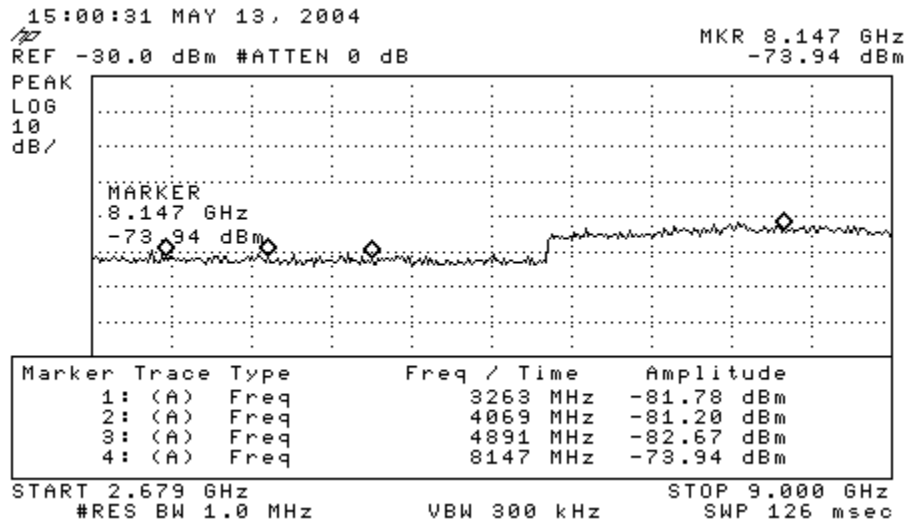
RT

**Radiated Emissions; Uplink; 815 MHz**



RT

**Radiated Emissions; Uplink; 815 MHz**



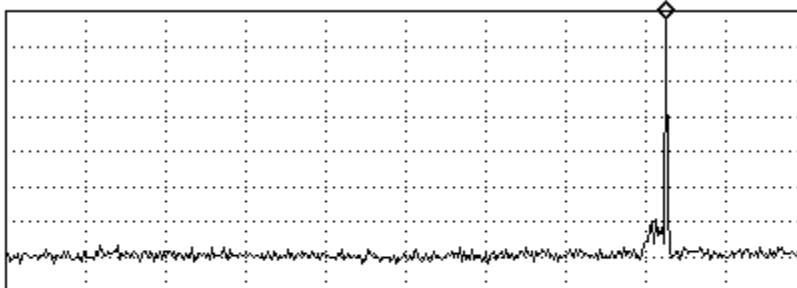
RT

**Radiated Emissions; Uplink; 825 MHz Fundamental**

15:43:07 MAY 13, 2004

REF -20.0 dBm #ATTEN 0 dB

PEAK  
 LOG  
 10  
 dB/



Marker	Trace Type	Freq / Time	Amplitude
1:	(A) Freq	830.2 MHz	-22.44 dBm
2:	Inactive		
3:	Inactive		
4:	Inactive		

START 30.0 MHz STOP 1.0000 GHz  
 #RES BW 120 kHz VBW 300 kHz SWP 202 msec

RT

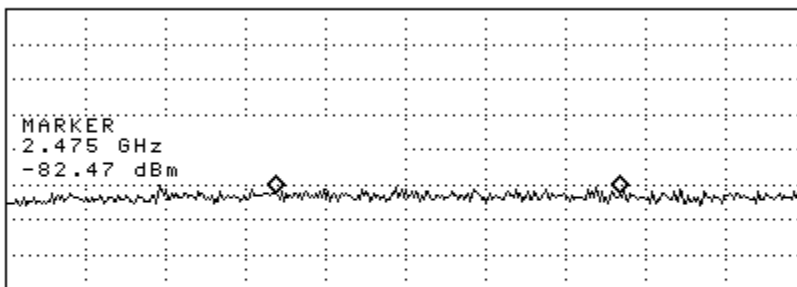
**Radiated Emissions; Uplink; 825 MHz**

13:40:16 MAY 13, 2004

REF -30.0 dBm #ATTEN 0 dB

MKR 2.475 GHz  
 -82.47 dBm

PEAK  
 LOG  
 10  
 dB/



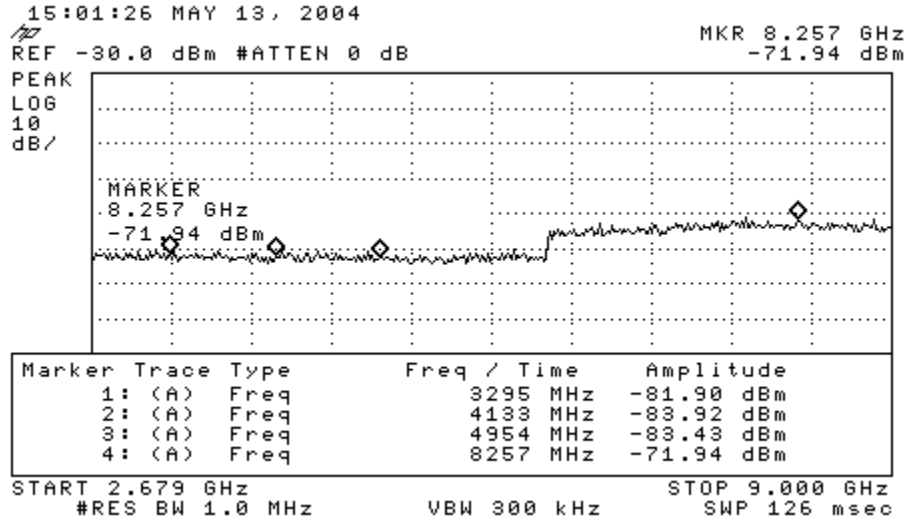
Marker	Trace Type	Freq / Time	Amplitude
1:	(A) Freq	1648 MHz	-84.31 dBm
2:	(A) Freq	2475 MHz	-84.86 dBm
3:	Inactive		
4:	Inactive		

START 1.000 GHz STOP 2.921 GHz  
 #RES BW 1.0 MHz VBW 300 kHz SWP 38.4 msec

RT



**Radiated Emissions; Uplink; 825 MHz**



RT