

US Tech Test Report:  
FCC ID:  
IC:  
Test Report Number:  
Issue Date:  
Customer:  
Model:

FCC Part 15 Class II Permissive Change  
P2SR900CE  
4171B-R900CE  
23-0195  
February 6, 2024  
Neptune Technology Group Inc.  
R900

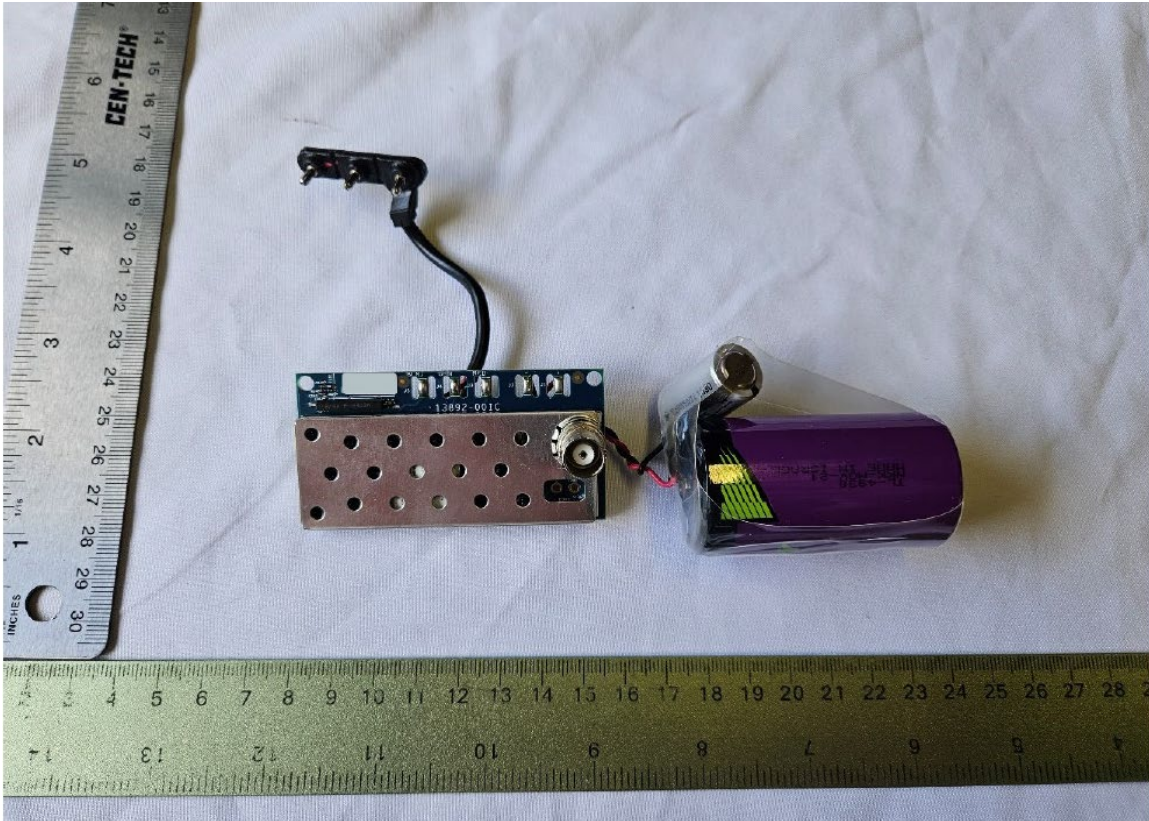
## INTERNAL PHOTOGRAPHS



**Figure 1. EUT, Cover Removed**

US Tech Test Report:  
FCC ID:  
IC:  
Test Report Number:  
Issue Date:  
Customer:  
Model:

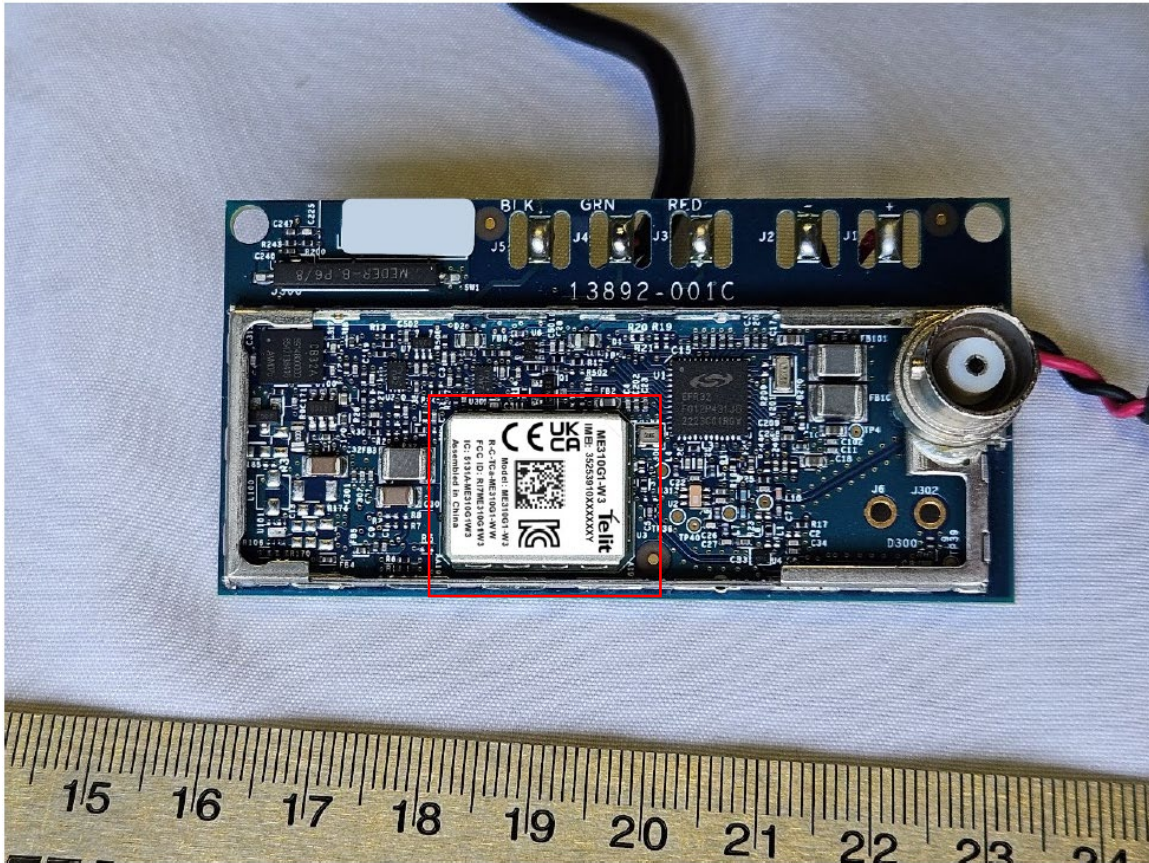
FCC Part 15 Class II Permissive Change  
P2SR900CE  
4171B-R900CE  
23-0195  
February 6, 2024  
Neptune Technology Group Inc.  
R900



**Figure 2. Main Board, With Shield**

US Tech Test Report:  
FCC ID:  
IC:  
Test Report Number:  
Issue Date:  
Customer:  
Model:

FCC Part 15 Class II Permissive Change  
P2SR900CE  
4171B-R900CE  
23-0195  
February 6, 2024  
Neptune Technology Group Inc.  
R900



**Figure 3. Enclosure, Electronics Removed**

Note: Replacement cellular module identified above.

US Tech Test Report:  
FCC ID:  
IC:  
Test Report Number:  
Issue Date:  
Customer:  
Model:

FCC Part 15 Class II Permissive Change  
P2SR900CE  
4171B-R900CE  
23-0195  
February 6, 2024  
Neptune Technology Group Inc.  
R900

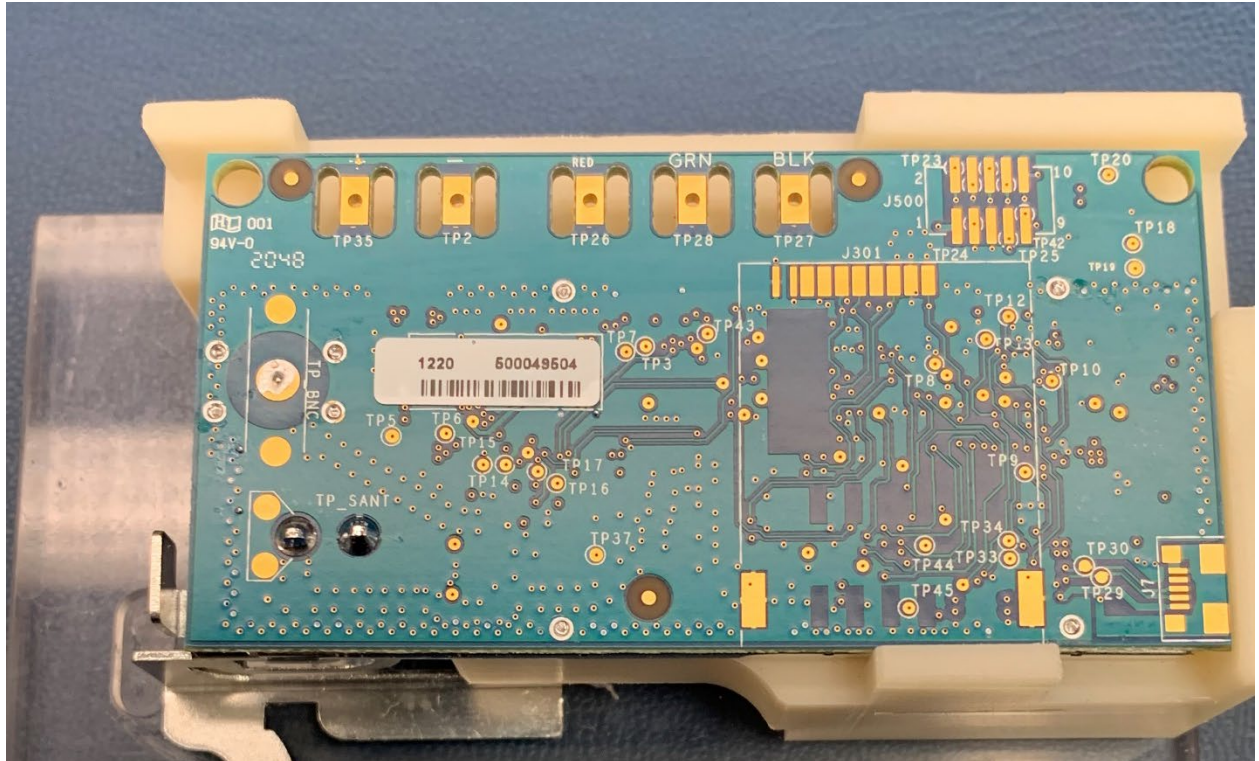


Figure 4. Bottom board