

## **Certification Exhibit**

**FCC ID: P2SNTR900GDL  
IC: 4171B-NTR900GDL**

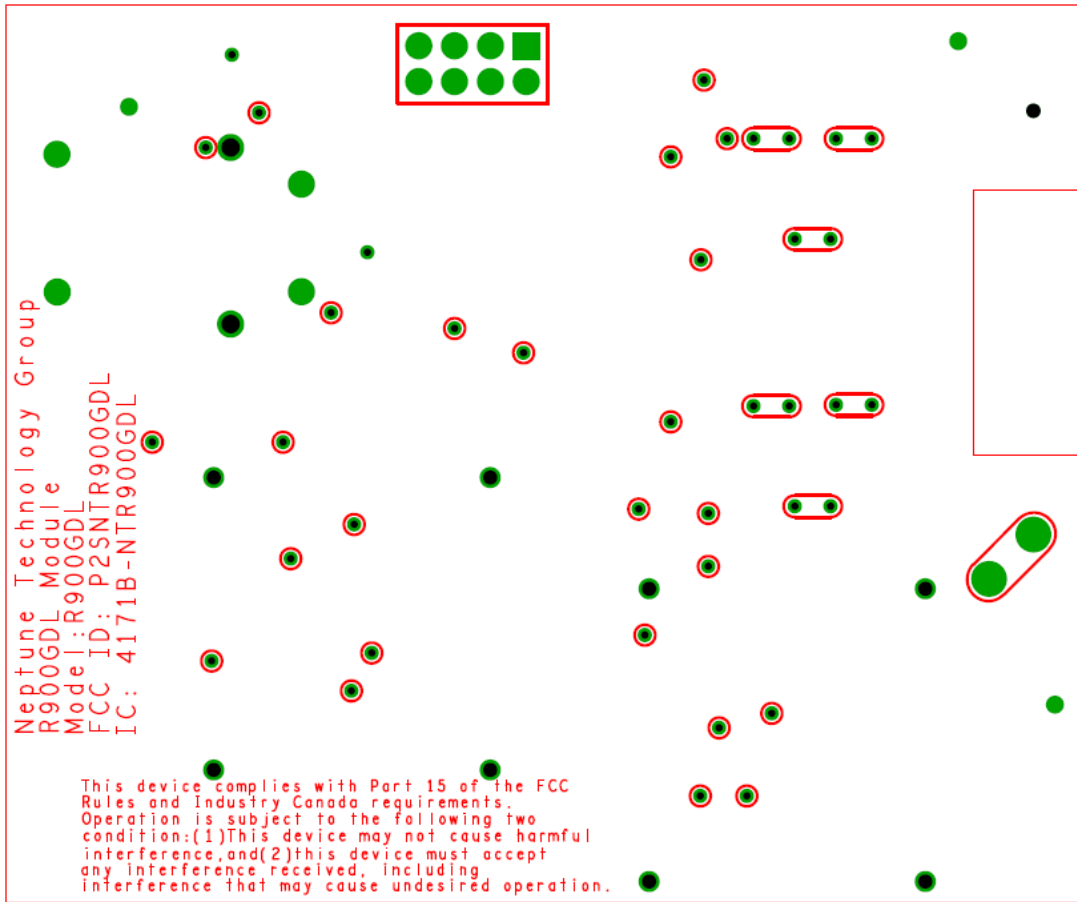
**FCC Rule Part: 15.247; 15.249  
IC Radio Standards Specification: RSS-210**

**ACS Report Number: 10-0053.W06**

**Manufacturer: Neptune Technology Group, Inc.  
Model: R900GDL**

## **Label Information**

Neptune R900GDL Sample Label  
Bottom of PCB



8	7	6	5	4	3	2	1				
END PART NO. "PPPPP-PPP"	DESCRIPTION "AAAAAAAAAAAAA...A"			NO. 7985-174	REV ZN	DESCRIPTION	DATE	AUTH	BY	CKD	APPD
					A	INITIAL RELEASE	—	P6486-1	MS	2	2
12750-000	AL/AR/AM/AC-175/250/425/630										
12821-000	R-175/200/230/275/315 2 CU FT DRIVE										
12821-100	R-415 2 CU FT DRIVE										
12821-010	R-175/200/275/315/PROPANE/1 CU FT DRIVE										
12861-000	METRIS/S175-S250/400A/CENTINEL										
12882-000/100/200	AMCO AL800-5000/ACTARIS 675A-1000A/SENSUS 750-10000										
12988-000	NATIONAL/LANCASTER 175/250										

**NEPTUNE R900G™** P/N: PPPPP-PPP AAAAAAAAAAAAA...A  
CONTAINS FCC ID: P2SNTR900GDL MFG: MM/DD/YY  
CONTAINS IC: 4171B-NTR900GDL

NEPTUNE TECHNOLOGY GROUP Inc  
1600 ALABAMA HWY 229  
TALLASSEE, AL 36078

INTRINSICALLY SAFE PROCESS CONTROL EQUIPMENT FOR  
USE IN CLASS I, DIV 1, GROUP C&D T4 To-40C HAZARDOUS  
(CLASSIFIED) LOCATIONS.

**FM**  
APPROVED

THIS DEVICE COMPLIES WITH PART 15 OF THE FCC RULES.  
OPERATION IS SUBJECT TO THE FOLLOWING TWO CONDITIONS:  
(1) THIS DEVICE MAY NOT CAUSE HARMFUL INTERFERENCE, AND  
(2) THIS DEVICE MUST ACCEPT ANY INTERFERENCE RECEIVED,  
INCLUDING INTERFERENCE THAT MAY CAUSE UNDESIRABLE OPERATION.

GROUND TRANSPORTATION ONLY  
INTERNAL SOFTWARE © 2006 NEPTUNE

1 → S/N: 2XXXXXXXXX  
[BARCODE HERE]

1 → BARCODE SERIAL No.

**FM  
DRAWING**

**NOTES:**  
1 → REFER TO EPS 38-01.

NEPTUNE Technology Group, Inc.  
CONFIDENTIAL AND PROPRIETARY

THIS DOCUMENT CONTAINS THE TRADE SECRETS AND  
CONFIDENTIAL INFORMATION OF NEPTUNE Technology Group,  
Inc., WHICH EMBODY SUBSTANTIAL CREATIVE EFFORT, IDEAS,  
AND EXPRESSIONS WHICH ARE NOT TO BE DIVULGED TO  
THIRD PARTIES WITHOUT SPECIFIC WRITTEN PERMISSION  
FROM NEPTUNE Technology Group, Inc.

**NOTICE:**  
© COPYRIGHT ..... NEPTUNE Technology Group, Inc.

<b>SPECIAL HANDLING</b>	<b>MATERIAL SPEC.</b>	<b>DO NOT SCALE DRAWING</b>	<b>DWN</b> MS 3/24/10	<b>TITLE</b>
	MADE FROM 7985-506	UNLESS OTHERWISE SPECIFIED	CKD 3/24/10	<b>LABEL, FM</b> R900G DL GAS MODULE
	<b>SPECIFICATIONS</b>	<b>BREAK EDGES</b> .005/.015 <b>DECIMALS</b> 1/16 <b>F.I.M. SURF.</b> 125	APPD 3/24/10	
	EPS 38-01	<b>FRACTIONS</b> 1/64 <b>MM</b> 1 PL ± .1 2 PL ± .05 <b>ANGLES</b> ± 1°	APPD SCALE NTS	
<b>SAVED IN PRO-E AS:</b> 7985-174	<b>FINISH SPEC.</b>		<b>NO.</b> 7985-174	<b>B</b>



SHT. 1 OF 1