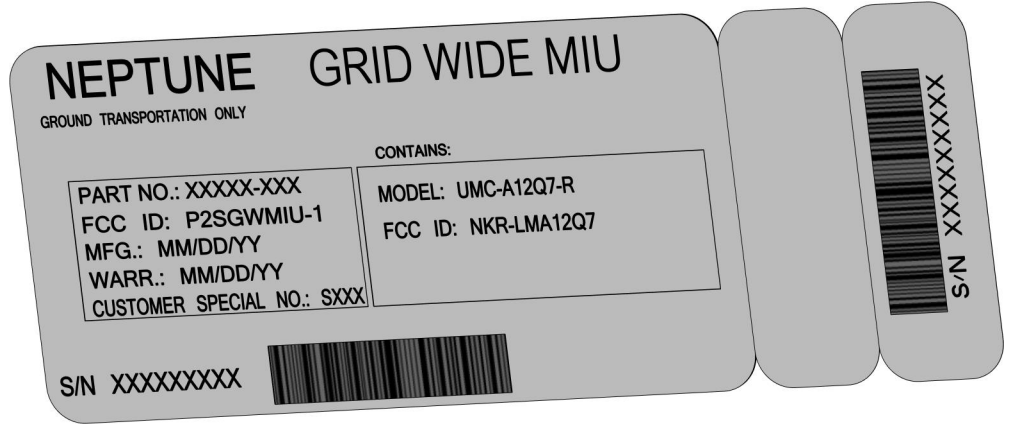
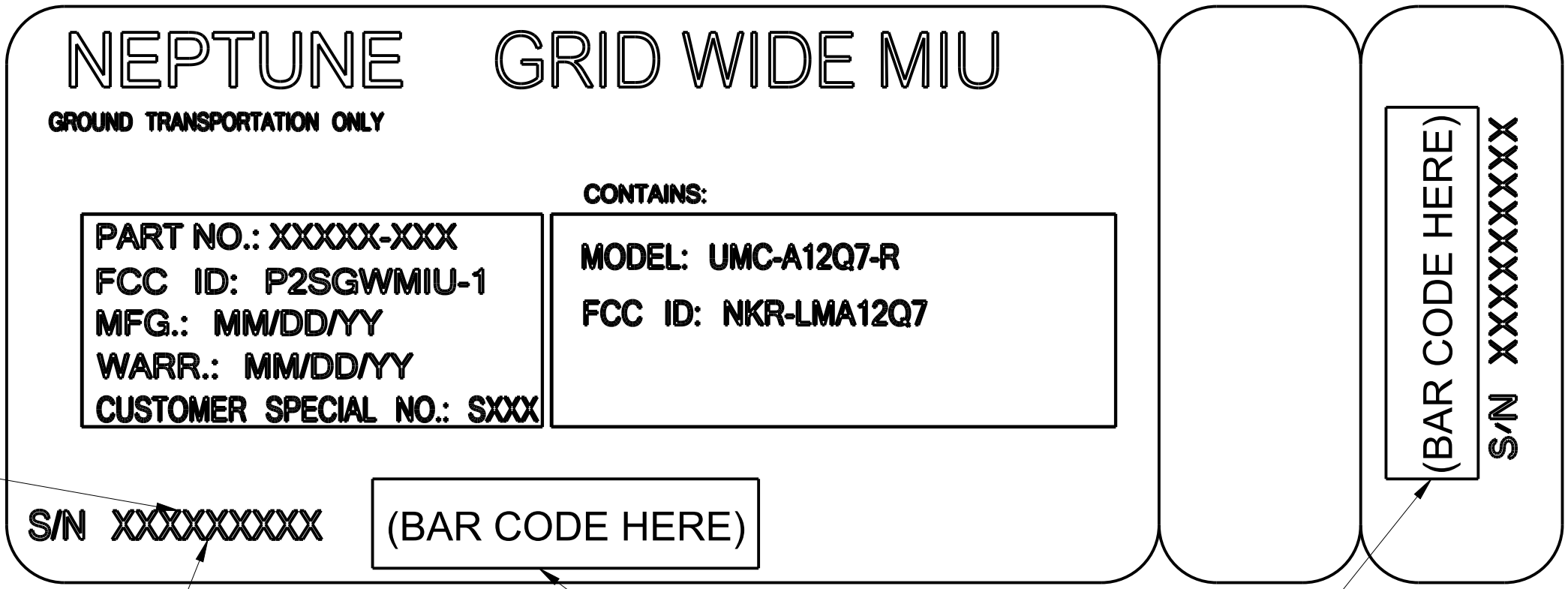


NO.	REV	ZN	DESCRIPTION	DATE	AUTH	BY	CKD	APPD
827-9867	A		INITIAL RELEASE	—	10070-5	LA		



SCALE 2.000



S/N TO BE A 9 DIGIT EVEN NUMBER

**RELEASED FOR QUOTATIONS ONLY**  
 REVISION: A DATE:  
 ENGINEER:

**NOTES:**

- 1 TO DETERMINE DESIGNATED SERIAL NUMBER RANGES REFER TO EPS 38-00.
- 2 BARCODE FORMAT TO BE CODABAR.

NEPTUNE Technology Group, Inc. CONFIDENTIAL AND PROPRIETARY  <small>THIS DOCUMENT CONTAINS THE TRADE SECRETS AND CONFIDENTIAL INFORMATION OF NEPTUNE Technology Group, INC., WHICH EMBODY SUBSTANTIAL CREATIVE EFFORT, IDEAS, AND EXPRESSIONS WHICH ARE NOT TO BE DIVULGED TO THIRD PARTIES WITHOUT SPECIFIC WRITTEN PERMISSION FROM NEPTUNE Technology Group, INC.</small>	SPECIFICATIONS EPS 38-00 <span style="border: 1px solid black; padding: 2px;">1</span>	MATERIAL SPEC. MADE FROM 7985-519	DO NOT SCALE DRAWING UNLESS OTHERWISE SPECIFIED BREAK EDGES .005/.015 DECIMALS . INCH 2 PL ± .01 3 PL ± .005 FRACTIONS ± 1/64 FIN. SURF. 125 ANGLES ± 1°	DWN. LA 6/25/19 CKD. APPD. APPD. SCALE 4.000	TITLE <b>LABEL, FCC GRID WIDE MIU</b>
	NOTICE: © COPYRIGHT _____ NEPTUNE Technology Group, Inc.	DIMENSION SPEC. * NON-LINKED DIMENSION SAVED IN CAD AS: 7985-238	FINISH SPEC.		NO. <b>7985-238</b> SHT. 1 OF 1

G  
F  
E  
D  
C  
B  
A