
XHB1



Setup Guide

Copyright © 2020. All Rights Reserved.

Document Version: 1.7

Table of Contents

Chapter 1 Introduction	1
Overview	1
Package Contents	1
Physical Details	4
Chime Kit Installation.....	6
Chapter 2 Setup	8
Installation	8
Chapter 3 Hardware Installation	10
Overview	10
Appendix A Specifications.....	16
Wireless Camera	16
Regulatory Approvals.....	17
Label Information	21

Chapter 1

Introduction



This section provides information about the Camera features, components and capabilities.

Overview

The Xfinity Home Doorbell Camera is equipped with a doorbell and a camera in one unit. This device allows users to communicate with visitors and monitor their entry ways.

Features

1. **Works with most of the existing digital and mechanical chime**
2. **Provides full HD video quality**
3. **Supports dual band 2.4GHz and 5GHz 802.11ac**
4. **Two-way audio communication capable**
5. **Provides night mode with IR LED embedded**
6. **IP55 weather resistance outdoor-rated**
7. **Supports HDR**

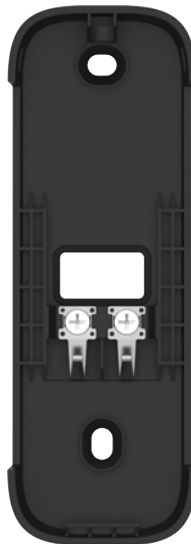
Package Contents

The following items should be included: If any of these items are damaged or missing, please contact your dealer immediately. Note; Installation only requires standard tools (screwdriver, drill/drill bit, etc.); no special tools are required,

1. Camera x 1 (with Included Trim Plate)



- 2. Wall Mount Bracket x 1



- 3. Screw/Anchor x 2

Screw diameter: 7mm; Length: 25mm

Anchor inner diameter: 9mm ; Length: 30mm



4. Reversible Angle Mount x 1



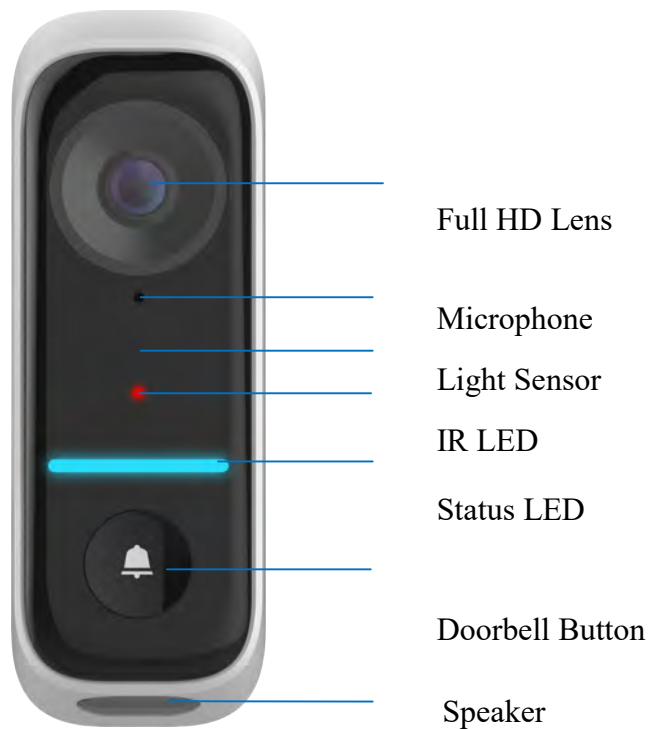
5. Chime Kit x 1



Physical Details

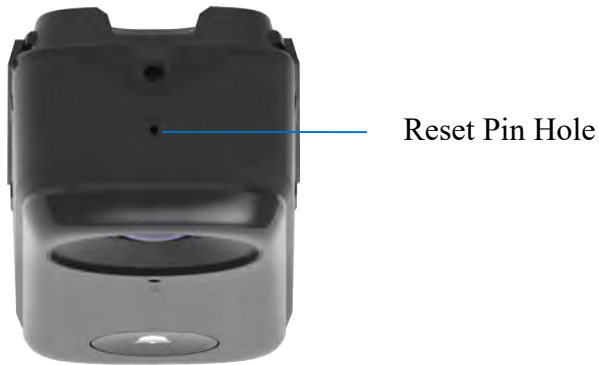
The XHB1 Camera is equipped with a doorbell and a camera in one unit. This device allows users to communicate with visitors and monitor their entryways. The camera works with any transformer that provides required voltage / power and can be professionally installed via wired mode.

Front Panel



HD Lens	The lens is designed to support full HD performance video and provide a field of view to help capture the delivery of packages and people at the door.
Light Sensor	The light sensor is used to help detect daytime and nighttime transitions to support night mode operation
Microphone	The built-in microphone is designed to capture ambient sound and for bi-direction voice conversation.
Speaker	The built-in speaker is used for voice conversation.
IR LED	The IR LED is used to support night mode operation
Doorbell Button	The doorbell button is used to ring the door chime and provide a notification that someone is at the door.

Top view



Reset Pin Hole

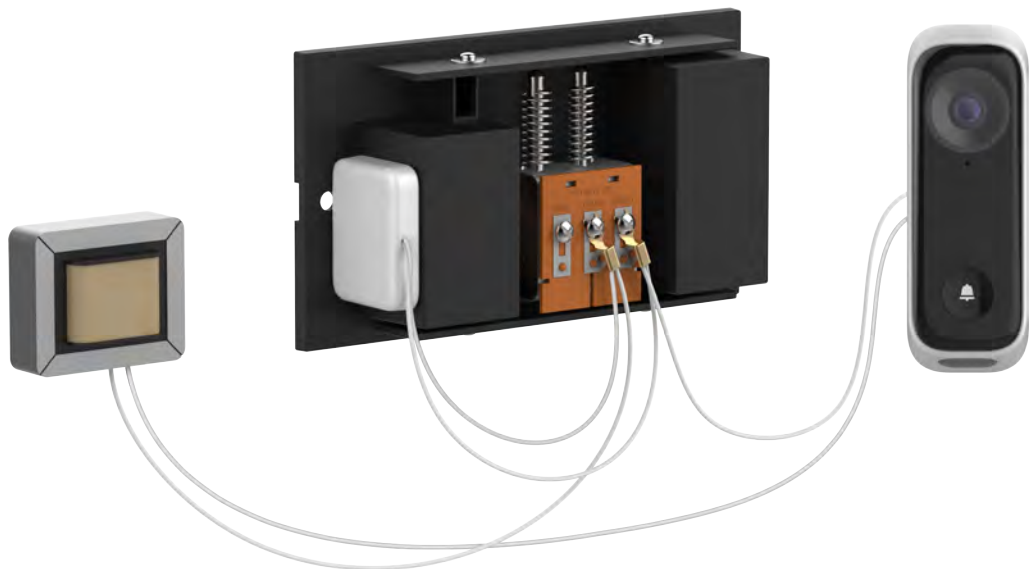
The reset pin hole is used to reboot the doorbell camera and to reset the doorbell camera to the original factory settings. Insert a paper clip into Reset Pin Hole, then gently press and release the button within one sec to reboot the camera. Press and hold for 5sec then release to reset the camera to factory settings.

Chime Kit Installation

The Chime Kit included with the camera is used to support the ringing of the doorbell chime and providing power to the doorbell camera. The Chime Kit is installed at the doorbell chime and goes between the transformer and chime wiring.

Note: Note: Before removing or attaching wires to your original, be sure that the power is turned off at the breaker box. Consult a licensed electrician if needed. It is suggested that you take a picture of the doorbell chime wiring in case you have issues with the installation.

1. Turn off the circuit breaker for the indoor chimer.
2. Remove the cover from the indoor chimer.
3. Loosen the "Front" and "Trans" terminal screws on the indoor chimer.



4. Connect one white wire from the Chime Kit to the "Front" terminal, and the other white wire to the "Trans" terminal (note - these wires are interchangeable), leaving the existing wires in place. Then, re-tighten the screws.
5. Position the Chime Kit inside your indoor chimer, away from any moving parts. tear off double side tape of the Chime Kit to fix it in place, if desired.
6. Attach the cover back to the indoor chime and turn the power on at the breaker.

Status LED Behavior

Booting up



Boot-up
Doorbell button now goes to 100% brightness and will remain static.

Incorrect hardware or voltage input



Incorrect hardware
A red and amber light will alternate repeatedly until problem is fixed.

Setup mode



Setup mode
Once booted, the white light will blink repeatedly until setup is completed.

Setup complete



Setup complete
Full white bar fades into full blue bar, then light shrinks toward center and then turns off.

Trouble connecting



Trouble connecting
An amber light will blink repeatedly until problem is fixed.

Chapter 2 Setup

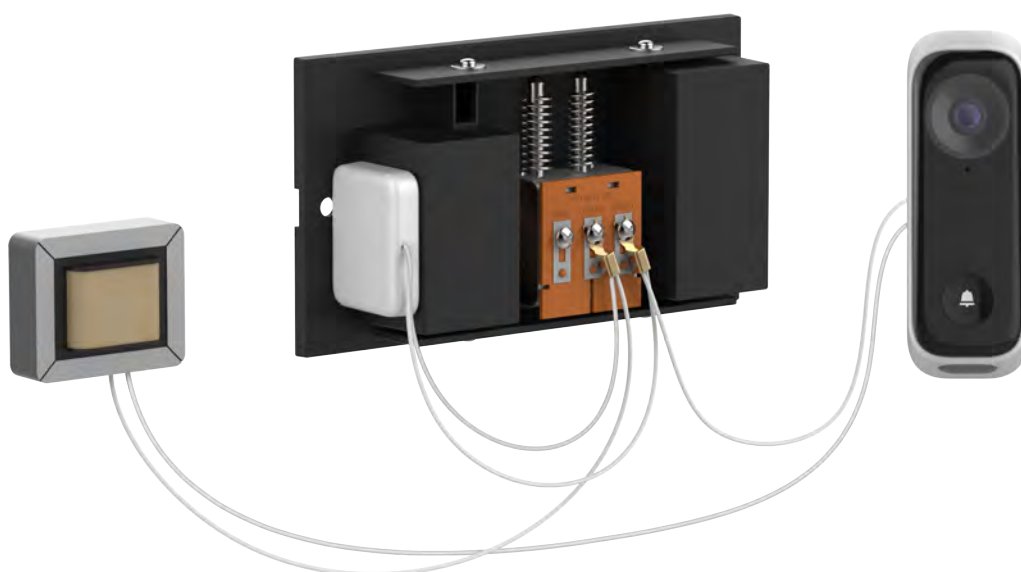
2

This Chapter provides details on how to install and configure the Camera.

Installation

Connect thru WiFi

To setup the doorbell to power on camera



Push doorbell button to trigger camera to enter into WPS mode

Also trigger the AP to enter into WPS mode, after WIFI connection established, check AP device webpage to get IP of camera.



hold doorbell
button for 5sec.
to enter to WPS
mode

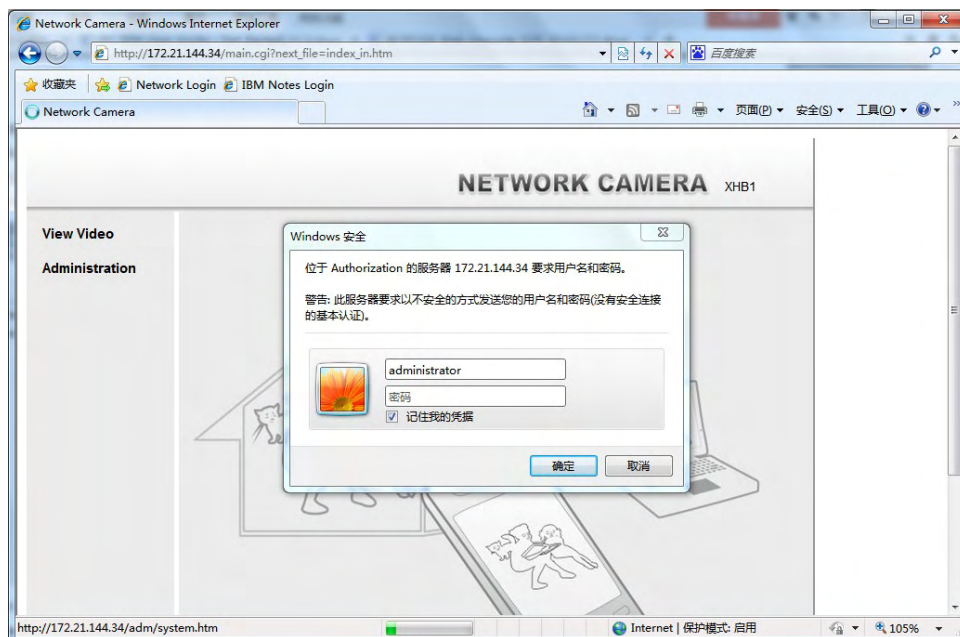
Access camera

After you get the IP of camera, you can access camera by web browser by <http://<IP>>

Click “Administration”, input username and password

Username: administrator

Password:



Chapter 3

Hardware Installation

3

This chapter covers the most likely problems and their solutions.

Overview

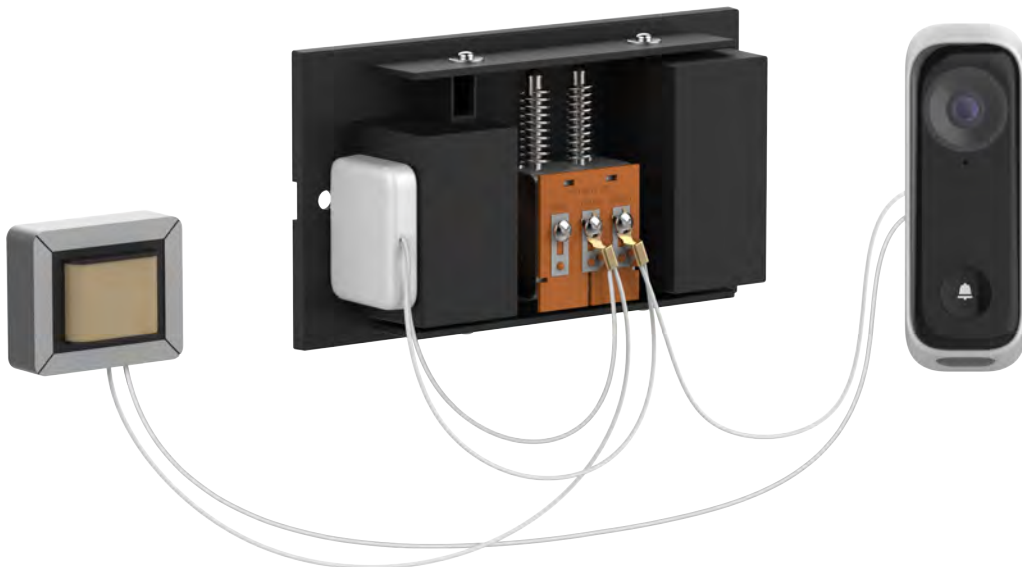
Note 1: We must Power up and check LED status and confirm that the camera is powering up and wait for status LED to glow as expected.

- a. If the status LED is not glowing per LED behavior, then following are two ways to resolve the issue
 - i. If LED is not glowing at all, then request user to wait longer as this may be because battery is drained
 - ii. If LED is not glowing per expected LED behavior, then request user to factory reset the device. (Please refer to “Physical Details” section for knowing how to do factory reset to default.)

Ensure the camera is configured and enrolled in AP or router before permanently mounting.

Note 2: XHB1 requires Wired Indoor Chime and transformer of 16-24V AC and at least 20VA, to power up

Note 3: Chime Kit installation is necessary for XHB1 to work properly



1. Check the voltage at the transformer to ensure voltage is between 16~24V AC.

2. Turn off the breaker circuit before disconnecting existing doorbell.



3. Unscrew the existing doorbell to locate two power wires. (The recommended installation height of XHB1 is maximum of 48inches.)



4. Connect the power wires to the screw terminals of the wall mount bracket of the XHB1 (Note: the wires can be installed to either terminal).



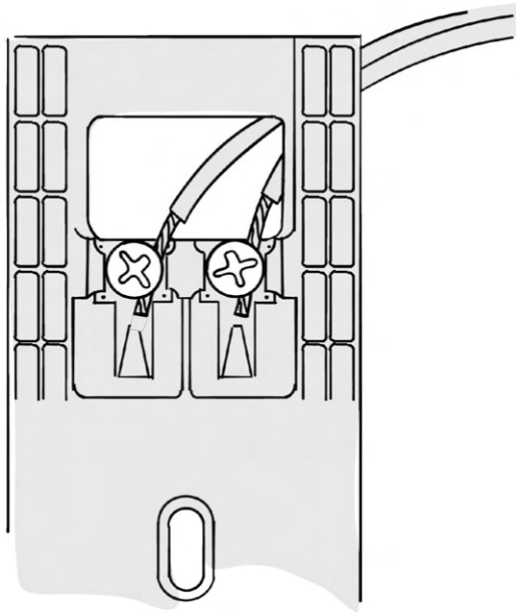
4-1 (Optional) If your home doesn't have a pre-existing wired doorbell, or has an incompatible doorbell system. You can use EPS-12 power supply to connect to XHB1 as follow steps

- (1) Choose a suitable AC socket that is close to the door where you plan to install the XHB1

Note: Do not connect the power supply yet

- (2) Route the power supply cable from the AC power outlet to the XHB1.
- (3) Connect the two power wires to the two screw terminals of the wall mount bracket of the XHB1.

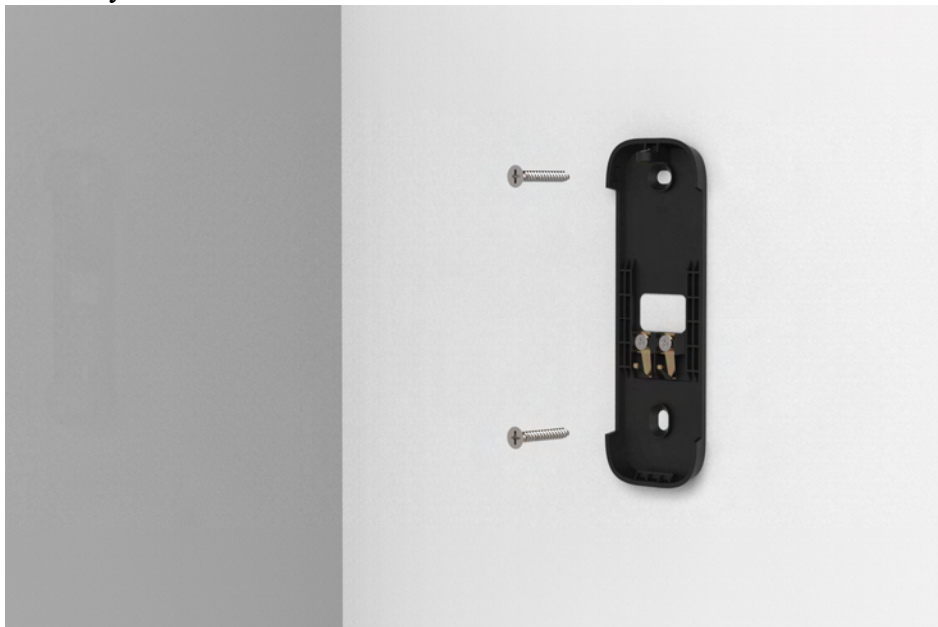
Note: The power wires can be connected to either terminal.



5. Drill pilot holes for the screws with a 9 mm drill bit. Secure the wall mount bracket with screws.

Note: Insert the anchors if necessary. Please do not over tighten the screws to prevent any damage to the bracket.

Note: Assuming the wall is wooden, it is recommended to set the torque at 3.5kgf-cm torque with Angle mount condition and 12kgf-cm for wall mount bracket only



6. Remove the trim plate if present. Attach the camera from bottom side to the wall mount bracket. Make sure the camera is firmly fixed. Screw the secure screw from the top side then cover with the trim plate.

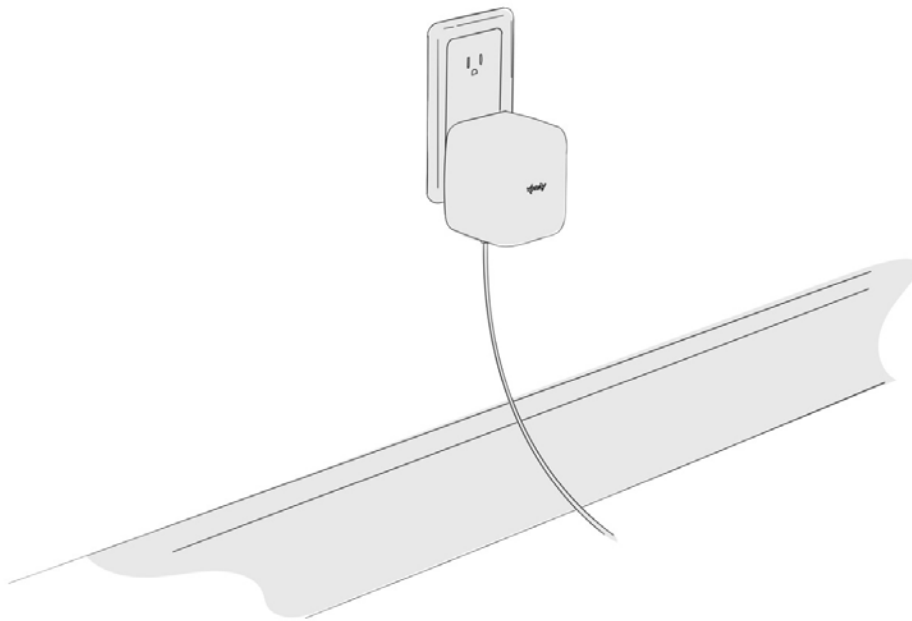
WARNING: The Trim plate must be properly installed to ensure proper doorbell camera operation

WARNING: If the camera falls, it could potentially cause harm, please make sure the power breaker will be shut down and re-mount your camera.





7. Turn on the breaker circuit and check if the Doorbell Camera is working properly.
- 7-1. (Optional) If using EPS-12, plug in the EPS-12 power supply



8. Check that the XHB1 is turning on through LED in the front cover

Note: For better seeing the target object, you could adjust your camera in different height and use the angle mount to adjust the viewing angle.

Appendix A

Specifications



Wireless Camera

Model	XHB1
Dimensions (With Trim Plate) (H x W x D)	116.56 x 41.03 x 32.7mm
Operating Temperature	-20°C to 40°C
Storage Temperature	-40°C to 60°C
Wireless	Wi-Fi (802.11 b/g/n/ac), Dual-Band (2.4Ghz/5Ghz)
IR LED	1
Status LED	5
Microphone	Built-in Microphone
Button	Doorbell Button x 1, reset button x 1
Speaker	1 built-in speaker
Power Input	Input: 16-24V~,50/60Hz, 20VA
Regulatory	UL, cUL, IC, FCC, CE Compliance

WARNING: There is a battery inside camera, keep the heat source away from the camera.

Regulatory Approvals

Federal Communication Commission Interference Statement

This device complies with Part 15 of the FCC Rules. Operation is subject to the following two conditions: (1) This device may not cause harmful interference, and (2) this device must accept any interference received, including interference that may cause undesired operation.

This equipment has been tested and found to comply with the limits for a Class B digital device, pursuant to Part 15 of the FCC Rules. These limits are designed to provide reasonable protection against harmful interference in a residential installation. This equipment generates, uses and can radiate radio frequency energy and, if not installed and used in accordance with the instructions, may cause harmful interference to radio communications. However, there is no guarantee that interference will not occur in a particular installation. If this equipment does cause harmful interference to radio or television reception, which can be determined by turning the equipment off and on, the user is encouraged to try to correct the interference by one of the following measures:

- Reorient or relocate the receiving antenna.
- Increase the separation between the equipment and receiver.
- Connect the equipment into an outlet on a circuit different from that to which the receiver is connected.
- Consult the dealer or an experienced radio/TV technician for help.

FCC Caution: Any changes or modifications not expressly approved by the party responsible for compliance could void the user's authority to operate this equipment.

This transmitter must not be co-located or operating in conjunction with any other antenna or transmitter.

Radiation Exposure Statement:

This equipment complies with FCC radiation exposure limits set forth for an uncontrolled environment. This equipment should be installed and operated with minimum distance 20cm between the radiator & your body.

Note: The country code selection is for non-US model only and is not available to all US model. Per FCC regulation, all WiFi product marketed in US must fixed to US operation channels only.

Industry Canada statement:

This device complies with ISED's licence-exempt RSSs. Operation is subject to the following two conditions: (1) This device may not cause harmful interference, and (2) this device must accept any interference received, including interference that may cause undesired operation.

Le présent appareil est conforme aux CNR d'ISED applicables aux appareils radio exempts de licence. L'exploitation est autorisée aux deux conditions suivantes : (1) le dispositif ne doit pas produire de brouillage préjudiciable, et (2) ce dispositif doit accepter tout brouillage reçu, y compris un brouillage susceptible de provoquer un fonctionnement indésirable.

Caution :

(i) the device for operation in the band 5150-5250 MHz is only for indoor use to reduce the potential for harmful interference to co-channel mobile satellite systems;

(ii) where applicable, antenna type(s), antenna models(s), and worst-case tilt angle(s) necessary to remain compliant with the e.i.r.p. elevation mask requirement set forth in section 6.2.2.3 shall be clearly indicated.

Avertissement:

Le guide d'utilisation des dispositifs pour réseaux locaux doit inclure des instructions précises sur les restrictions susmentionnées, notamment :

(i) les dispositifs fonctionnant dans la bande 5150-5250 MHz sont réservés uniquement pour une utilisation à l'intérieur afin de réduire les risques de brouillage préjudiciable aux systèmes de satellites mobiles utilisant les mêmes canaux;

(ii) lorsqu'il y a lieu, les types d'antennes (s'il y en a plusieurs), les numéros de modèle de l'antenne et les pires angles d'inclinaison nécessaires pour rester conforme à l'exigence de la p.i.r.e. applicable au masque d'élévation, énoncée à la section 6.2.2.3, doivent être clairement indiqués

Radiation Exposure Statement:

This equipment complies with ISED radiation exposure limits set forth for an uncontrolled environment. This equipment should be installed and operated with greater than 20cm between the radiator & your body.

Déclaration d'exposition aux radiations:

Cet équipement est conforme aux limites d'exposition aux rayonnements ISED établies pour un environnement non contrôlé. Cet équipement doit être installé et utilisé à plus de 20 cm entre le radiateur et votre corps.

CE Approval

CE Standards

This product complies with the 2014/30/EU directives, including the following safety and EMC standards:

- EN55032/24

CE Marking Warning

This is a Class B product. In a domestic environment this product may cause radio interference in which case the user may be required to take adequate measures.

CAUTION

RISK OF EXPLOSION IF BATTERY IS REPLACED
BY AN INCORRECT TYPE.

DISPOSE OF USED BATTERIES ACCORDING
TO THE INSTRUCTIONS

Sercomm France
Immeuble Le Renan 2/4 Rue Maurice
Hartmann, 92130 Issy Les Moulineaux, France