



**SAR Evaluation Report
for
FCC OET Bulletin 65 Supplement C**

Report No.: TESI0907110

Client : SerComm Corporation
 Product : Wireless USB Adapter
 Model : UB812EN, WUA-0605
 FCC ID : P27UB812EN
 Manufacturer/ supplier : SerComm Corporation


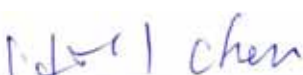

Date test item received : May, 27. 2009
 Date test campaign completed : Jun. 11 2009
 Date of issue : Jun. 18. 2009
 Test Result : Compliance Not Compliance

Statement of Compliance:

The SAR values measured for the test sample are below the maximum recommended level of 1.6 W/kg averaged over any 1g tissue according to FCC OET Bulletin 65 Supplement C (Edition 01-01).

The test result only corresponds to the tested sample. It is not permitted to copy this report, in part or in full, without the permission of the test laboratory.

Total number of pages of this test report: 39 pages

Test Engineer:  <hr/> Ben Lu	Checked by:  <hr/> Hill Chen	Approved by:  <hr/> Anson Chou
---	---	---

The testing described in this report has been carried out to the best of our knowledge and ability, and our responsibility is limited to the exercise of reasonable care. This certification is not intended to believe the sellers from their legal and/or contractual obligations.



Applicant Information

Client	: SerComm Corporation
Address	: 8F, No. 3-1, YuanQu St., NanKang, Taipei 115, Taiwan, R.O.C.
Manufacturer	: SerComm Corporation
Address	: 8F, No. 3-1, YuanQu St., NanKang, Taipei 115, Taiwan, R.O.C.
EUT	: Wireless USB Adapter
Trade name	: SerComm, LevelOne
Model No.	: UB812EN, WUA-0605
Standard Applied	: FCC OET 65 Supplement C (Edition 01-01, June 2001) IEEE Standard 1528-2003 KDB:447498(12/02/2008)
Laboratory	: CERPASS TECHNOLOGY CORP. 2F-11, No. 3, YuanQu St.(Nankang Software Park) Taipei City 115 Taiwan, R.O.C.
Test Location	: No. 8, Lane 29, Wenming RD., LeShan Tsuen, GuiShan Shiang, Taoyuan County 33383, Taiwan, R.O.C.
Test Result	: Maximum SAR Measurement 802.11b: 1.1W/kg(1g) 802.11g: 0.171 W/kg(1g) 802.11n, HT20: 0.17 W/kg(1g) 802.11n, HT40: 0.209 W/kg(1g)

The N Wireless USB Adapter is in compliance with the FCC Report and Order 93-326 and Health Canada Safety Code 6, and the tests were performed according to the FCC OET65c for uncontrolled exposure.



Contents

1. General Information	5
1.1. Description of Equipment under Test	5
1.2. Photograph of EUT	5
1.3. Characteristics of Device	6
1.4. Description of support units	6
1.5. Environment Condition	7
1.6. FCC Requirement of SAR Compliance Testing	7
1.7. The SAR Measurement Procedure	8
2. Description of the Test Equipment	9
2.1. Test Equipment List	9
2.2. DASY4 Measurement System Diagram	10
2.3. DASY4 Measurement Server	11
2.4. DAE(Data Acquisition Electronics)	12
2.5. Phantom	13
2.6. Device Holder	13
2.7. Specification of probes	14
2.8. SAR Measurement Procedures in DASY4	15
2.9. Simulating Liquids	15
2.10. System Performance Check	16
3. Results	18
3.1. Summary of Test Results	18
3.2. Description for EUT test position	18
3.3. Check the conducted power of the worst-case	18
3.4. Check the position for the worst result	18
3.5. Double Check the other mode result	19
3.6. Measurement Position	20
4. The Description of Test Procedure for FCC	22
4.1. Scan Procedure	22
4.2. SAR Averaging Methods	22
4.3. Data Storage	22
4.4. Data Evaluation	23
5. Measurement Uncertainty	25
5.1. Measurement Uncertainty I (According to IEEE1528)	25
5.2. Measurement Uncertainty II (According to IEC 62209)	26
6. Reference	27
Appendix A. Photographs of EUT	A1 ~ A3
Appendix B. SAR Results	B1 ~ B9



Executive Summary

The N Wireless USB Adapter is a usb dongle from SerComm Corporation products operating in the 2.4GHz frequency ranges. This device contains wireless functions that are operational in IEEE 802.11b, 802.11g, IEEE802.11n HT20, and IEEE802.11n HT40 mode. The measurements was conducted by CERPASS and carried out with the dosimetric assessment system – DASY4.

The measurements were conducted according to FCC OET 65 Supplement C [Reference 5] for evaluating compliance with requirements of FCC Report and Order 96-326 [Reference 3] for evaluating compliance with requirements of Health Canada Safety Code 6[Reference 9].

The frequency range of the device

802.11b/g/n HT20	
CH	Mhz
01	2412
06	2437
11	2462

802.11n HT40	
CH	Mhz
03	2422
06	2437
09	2452

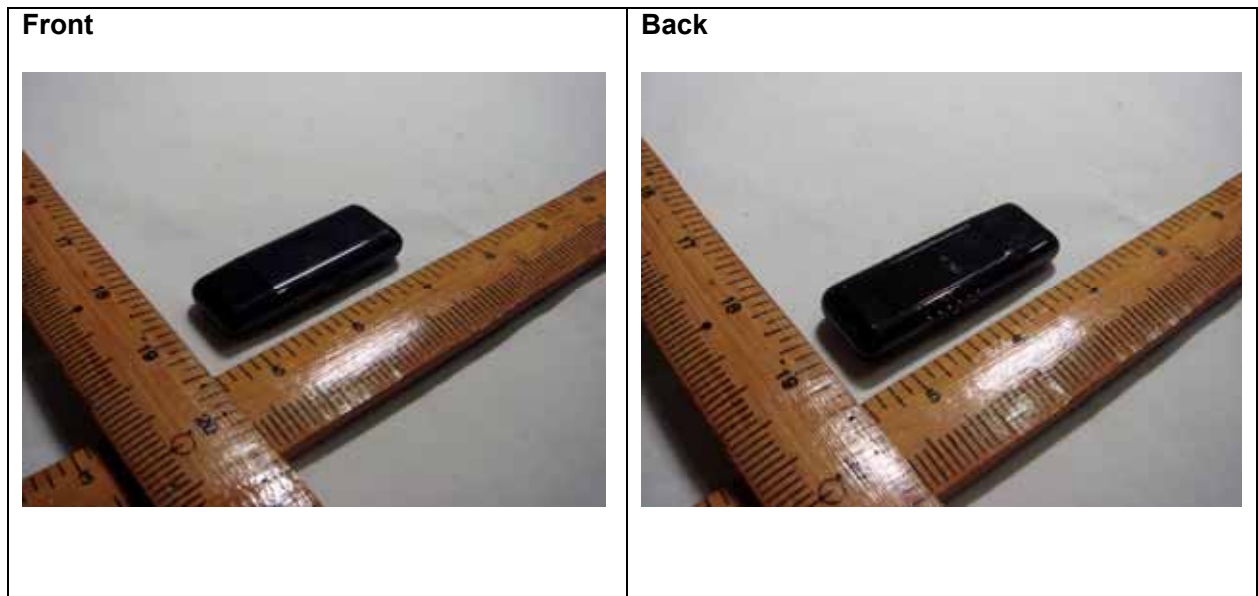


1. General Information

1.1. Description of Equipment under Test

EUT Type	Wireless USB Adapter
Trade Name	SerComm
Model Name	UB812EN, WUA-0605
Hardware Version	N/A
Software Version	N/A
TX Frequency	2412-2462Mhz
RX Frequency	2412-2462Mhz
Antenna Type	Internal
Device Category	Portable
RF Exposure Environment	General Population/ Uncontrolled
Crest Factor	1

1.2. Photograph of EUT





1.3. Characteristics of Device

The EUT is a 2.4 GHz N Wireless USB Adapter. It conforms to the IEEE 802.11b/g/n protocol and operates in the unlicensed ISM Band at 2.4 GHz.

RF Chain	1T2R
Frequency Range	IEEE802.11b/g/n HT20:2412Mhz-2462Mhz IEEE802.11n HT40:2422Mhz-2452Mhz
Channel Spacing	IEEE802.11b/g/n: 5Mhz
Channel Number	IEEE802.11b/g/n HT20:11 channels IEEE802.11n HT40:7channels
Transmit Data Rate	Up to 130Mps
Type of Modulation	DSSS, OFDM

1.4. Description of support units

The SAR evaluation was performed on the following hosts:

Host#	Description	Manufacturer	Model	Overall Dimension
1	Laptop Computer	DELL	Latitude D630	33.7x23.8x3.23cm
2	Laptop Computer	HP	NX6320	32.8 x 26.7 x 3.1 cm

Laptop computers are not available for testing the Horizontal-UP of the EUT and the remaining Vertical-Front orientation, a short and high quality USB connector cable is used for testing these other orientations.

Cable#	Description	Manufacturer	Type	Length
1	USB cable	N/A	Female to male	25cm



1.5. Environment Condition

Item	Target	Measured
Ambient Temperature()	18~25	22±1
Temperature of Simulant()	20~24	22±1
Relative Humidity(%RH)	30~70	60~70

1.6. FCC Requirement of SAR Compliance Testing

According to the FCC order “Guidelines for Evaluating the Environmental Effects of RF Radiation”, for consumer products, the SAR limit is **1.6 W/kg** for an uncontrolled environment and **8.0 W/kg** for an occupational/controlled environment. Pursuant to the Supplement C of OET Bulletin 65 “Evaluating Compliance with FCC Guide-lines for Human Exposure to Radio frequency Electromagnetic Fields”, released on June 29, 2001 by FCC, the equipment under test should be evaluated at maximum output power (radiated from the antenna) under “worst-case” conditions for intended or normal operation, incorporating normal antenna operating positions, equipment undet test peak performance frequencies and positions for maximum RF power coupling.

1.6.1 RF Exposure Limits

	Whole-Body	Partial-Body	Arms and Legs
Population/ Uncontrolled Environments(W/kg)	0.08	1.6	4.0
Occupational/ Controlled Environments(W/Kg)	0.4	8.0	20.0

Notes:

1. Population/Uncontrolled Environments: Locations where there is the exposure of individuals who have no sense or control of their exposure.
2. Occupational/Controlled Environments: Locations where there is exposure that may be incurred by people who have knowledge of the potential for exposure.
3. Whole-Body: SAR is averaged over the entire body.
4. Partial-Body: SAR is averaged over any 1g of tissue volume as defined in specification.
5. Arms and Legs: SAR is averaged over 10g of tissue volume as defined in specification.



1.7. The SAR Measurement Procedure

1.7.1 General Requirements

The test should be performance in a laboratory without influence on SAR measurements by ambient RF sources and any reflection from the environment inside. The ambient temperature should be kept in the range of 18°C to 25°C with a maximum variation within $\pm 2^\circ\text{C}$ during the test.

1.7.2 Phantom Requirements

The phantoms used in test are simplified representations of the human head and body as a specific shaped container for the head or body simulating liquids. The physical characteristics of the phantom models should resemble the head and the body of a mobile user since the shape is a dominant parameter for exposure. The shell of the phantom should be made of low loss and low permittivity material and the thickness tolerance should be less than 0.2 mm. In addition, the phantoms should provide simulations of both right and left hand operations.

1.7.3 Test Positions

1. The horizontal-down and horizontal-up of EUT contact to the flat phantom. (Test with Notebook Model: DELL Latitude D630) The transmitted antenna of the EUT located under the reference point of the flat phantom. The separation distance is 5mm between the top of the EUT and the bottom of the flat phantom. The area scan size is 41 x 61 points.
2. The vertical-back and vertical-front of EUT contact to the flat phantom. (Test with Notebook Model: DELL Latitude D630) The transmitted antenna of the EUT located under the reference point of the flat phantom. The separation distance is 5mm between the top of the EUT and the bottom of the flat phantom. The area scan size is 31 x 61 points.

1.7.4 Test Procedures

The EUT (N Wireless USB Adapter) plugged into the notebook. Use the software to control the EUT channel and transmission power. Then record the conducted power before the testing. Place the EUT to the specific test location. After the testing, must writing down the conducted power of the EUT into the report. The SAR value was calculated via the 3D spline interpolation algorithm that has been implemented in the software of DASY4 SAR measurement system manufactured and calibrated by SPEAG.



2. Description of the Test Equipment

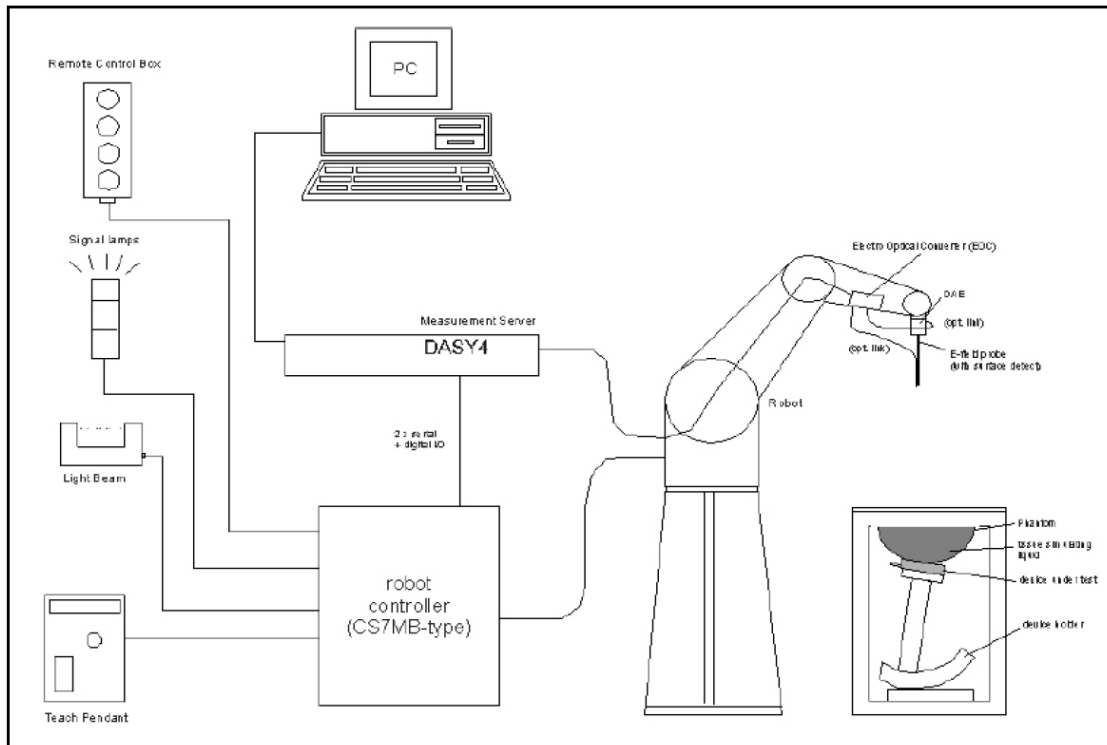
The measurements were performed using an automated near-field scanning system, DASY4 software, manufactured by Schmid & Partner Engineering AG (SPEAG) in Switzerland. The SAR extrapolation algorithm used in all measurements on the test device was the 'worstcase extrapolation' algorithm.

2.1. Test Equipment List

Equipment	Manufacturer	Type	S/N	Calibration Date
Robot	Staubli	RX90B L	F03/5W16A1A/01	(not necessary)
Robot Controller	Staubli	CS7MB	F03/5W16A1C/01	(not necessary)
Teach Pendant	Staubli	---	D221340061	(not necessary)
DAE4	Schmid & Partner Engineering AG	---	629	2009-09-22
E-field Probe	Schmid & Partner Engineering AG	EX3DV4	3555	2009-09-18
Dipole Validation Kit	Schmid & Partner Engineering AG	D2450V2	764	2009-09-23
Digital Thermometer	DER EE	K-TYPE	DE-3003	2009-01-14
Directional Coupler	Amplifier Research	DC7420	310569	2009-09-13
DASY4 Software	Schmid & Partner Engineering AG	---	Version 4.6B23	To automatically control the robot and perform the SAR measurement
SEMCAD Software	Schmid & Partner Engineering AG	---	Version 1.8B160	Post-processing and report management
Signal Generator	Agilent	83640B	3844A01143	2009-09-18
Amplifier	Mini-Circuits	ZHL-42W	D111704-01-02	2009-01-29
Power Meter	BOONTON	4532-0102	136601	2009-05-04
Power Sensor	BOONTON	51011-EMC	32861	2009-05-04
Power Sensor	BOONTON	56518	3233	2009-05-04
S-Parameter Network Analyzer	Agilent	8753ES	MY40001340	2009-12-01
Calibration Kit	Agilent	85033C	2920A03287	(not necessary)
Dielectric Probe Kit	Agilent	85070E	MY44300101	(not necessary)



2.2. DASY4 Measurement System Diagram



The DASY4 Measurement System



The DASY4 System Photo



The DASY4 system consists of the following items:

- A fixed-on-ground high precision 6-axis robot with controller and software and an arm extension for moving the Data Acquisition Electronics (DAE) and Probe.
- A dosimetric probe, an isotropic E-field probe optimized and calibrated for usage in head or body tissue simulating liquids. Some of the probes are equipped with an optical surface detector system.
- A Data Acquisition Electronic (DAE) performing the signal amplification, signal multiplexing, AD-conversion, offset measurements, mechanical surface detection, collision detection, etc. DAE is powered with standard or rechargeable batteries. The signal is optically transmitted to the EOC.
- A unit to operate the optical surface detector which is connected to Electro-Optical Coupler (EOC).
- The EOC performs the conversion from the optical into a digital electric signal of the DAE. The EOC is connected to the DASY4 measurement server.
- The DASY4 measurement server performing all real-time data evaluation for field measurements and surface detection, controlling robot movements and handling safety operation. A computer with operating Windows 2000 is used for server.
- DASY4 software and SEMCAD data evaluation software are installed in PC.
- Remote control with teach panel and additional circuitry for robot safety such as warning lamps, etc.
- The generic twin phantom enabling the testing of left-hand and right-hand usage.
- The device holder for handheld mobile phones.
- Tissue simulating liquid mixed well according to the given recipes.
- System validation dipoles is used to validate the proper functioning of the system

2.3. DASY4 Measurement Server



DASY4 Measurement Server



The DASY4 measurement server is based on a PC/104 CPU board with a 166MHz low-power pentium, 32MB chipdisk and 64MB RAM. The necessary circuits for communication with either the DAE4 (or DAE3) electronic box as well as the 16-bit AD-converter system for optical detection and digital I/O interface are contained on the DASY4 I/O-board, which is directly connected to the PC/104 bus of the CPU board. The measurement server performs all real-time data evaluation for field measurements and surface detection, controls robot movements and handles safety operation. The PC-operating system cannot interfere with these time critical processes. All connections are supervised by a watchdog, and disconnection of any of the cables to the measurement server will automatically disarm the robot and disable all program-controlled robot movements. Furthermore, the measurement server is equipped with two expansion slots which are reserved for future applications. Please note that the expansion slots do not have a standardized pinout and therefore only the expansion cards provided by SPEAG can be inserted. Expansion cards from any other supplier could seriously damage the measurement server.

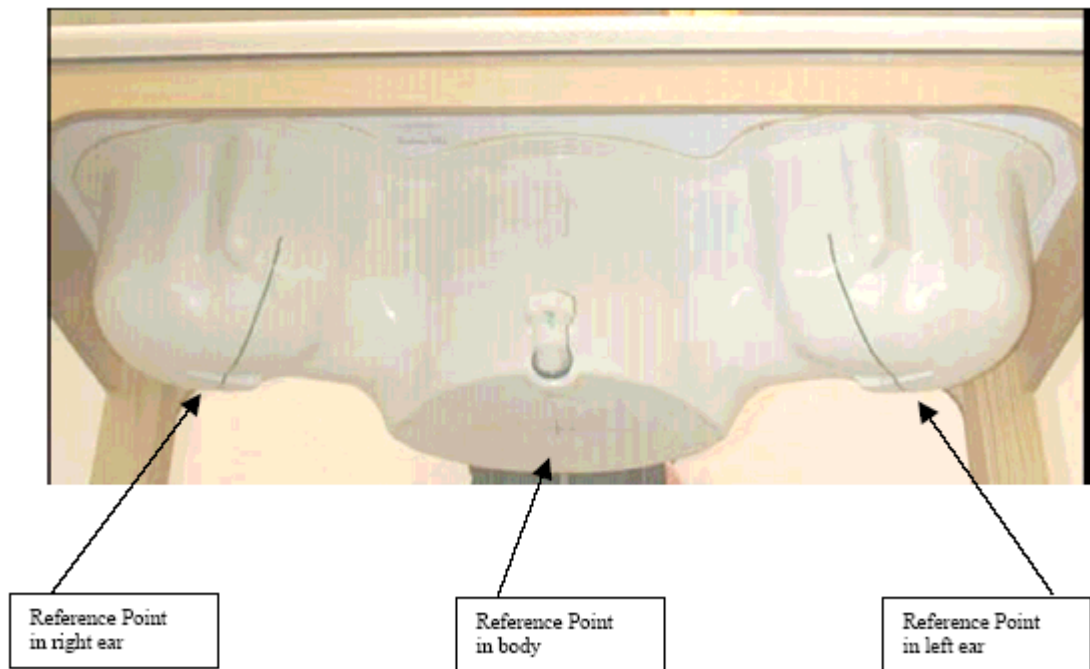
2.4. DAE(Data Acquisition Electronics)

Some probes are equipped with an optical multifiber line, ending at the front of the probe tip. This line is connected to the EOC box on the robot arm and provides automatic detection of the phantom surface. Half of the fibers are connected to a pulsed infrared transmitter, the other half to a synchronized receiver. If the probe approaches the surface, the reflection from the surface produces a coupling from the transmitting to the receiving fibers. This reflection increases during the approach, reaches a maximum and then decreases. If the probe perpendicularly touches the surface, the coupling is zero. The distance of the coupling maximum to the surface is independent of the surface reflectivity and largely independent of the surface to probe angle. The DASY4 software reads the reflection during a software approach and looks for the maximum using a 2nd order fitting. The approach is stopped upon reaching the maximum. The optical surface detection works in transparent liquids and on di_use reflecting surfaces with a repeatability of better than ± 0.1 mm. The distance of the maximum depends on the fiber and the surrounding media. It is typically 1.0mm to 2.0mm in tissue simulating mixtures. The distance can be measured with the surface check job (described in the reference guide).



2.5. Phantom

The phantom used for all tests i.e. for both system performance checking and device testing, was the twinheaded “SAM Twin Phantom V4.0”, manufactured by SPEAG. The phantom conforms to the requirements of IEEE1528-2003.



SAM Twin Phantom and the definition points

2.6. Device Holder

The device was placed in the device holder(illustrated below) that is supplied by SPEAG as an integrated part of the Dasy system.



Device holder supplied by SPEAG



2.7. Specification of probes

The E-Field Probes ET3DV6 or EX3DV4, manufactured and calibrated annually by Schmid & Partner Engineering AG with following specification are used for the dosimetric measurements.

ET3DV6:

- Dynamic range: 5 μ W/g ~ 100 mW/g
- Tip diameter: 6.8 mm
- Probe linearity: ± 0.2 dB (30MHz to 3 GHz)
- Axial isotropy: ± 0.2 dB
- Spherical isotropy: ± 0.4 dB
- Distance from probe tip to dipole centers: 2.7 mm
- Calibration range: 900MHz/1750MHz/1900MHz/ /2450MHz for head and body
- simulating liquids.

EX3DV4:

- Dynamic range: 10 μ W/g ~ 100 mW/g
- Tip diameter: 2.5 mm
- Probe linearity: ± 0.2 dB (30MHz to 3 GHz)
- Axial isotropy: ± 0.2 dB
- Spherical isotropy: ± 0.4 dB
- Distance from probe tip to dipole centers: 1.0 mm
- Calibration range: 900MHz/1810MHz for head simulating liquid and



2.8. SAR Measurement Procedures in DASy4

Step 1 Setup a Call Connection

Establish a call in handset at the maximum power level with a base station simulator via air interface.

Step 2 Power Reference Measurements

To measure the local E-field value at a fixed location which value will be taken as a reference value for calculating a possible power drift.

Step 3 Area Scan

To measure the SAR distribution with a grid with spacing of 15 mm x 15 mm and kept with a constant distance to the inner surface of the phantom. Additionally all peaks within 3 dB of the maximum SAR are searched.

Step 4 Zoom Scan

At these points (maximum number of SAR peaks is two), a cube of 30 mm x 30 mm x 30 mm is applied to and measured with 7 x 7 x 7 points. With these measured data, a peak spatial-average SAR value can be calculated by SEMCAD software.

Step 5 Power Drift Measurements

Repetition of the E-field measurement at the fixed location mentioned in Step 1 to make sure the two results differ by less than ± 0.2 dB.

2.9. Simulating Liquids

Liquids Recipes for this test report are as following:

BSL 2450 MHz band (Body)

Ingredient	% by weight
Water	68.12
DGBE	31.72
Salt	0.15



2.10. System Performance Check

2.10.1 Purpose

1. To verify the simulating liquids are valid for testing.
2. To verify the performance of testing system is valid for testing.

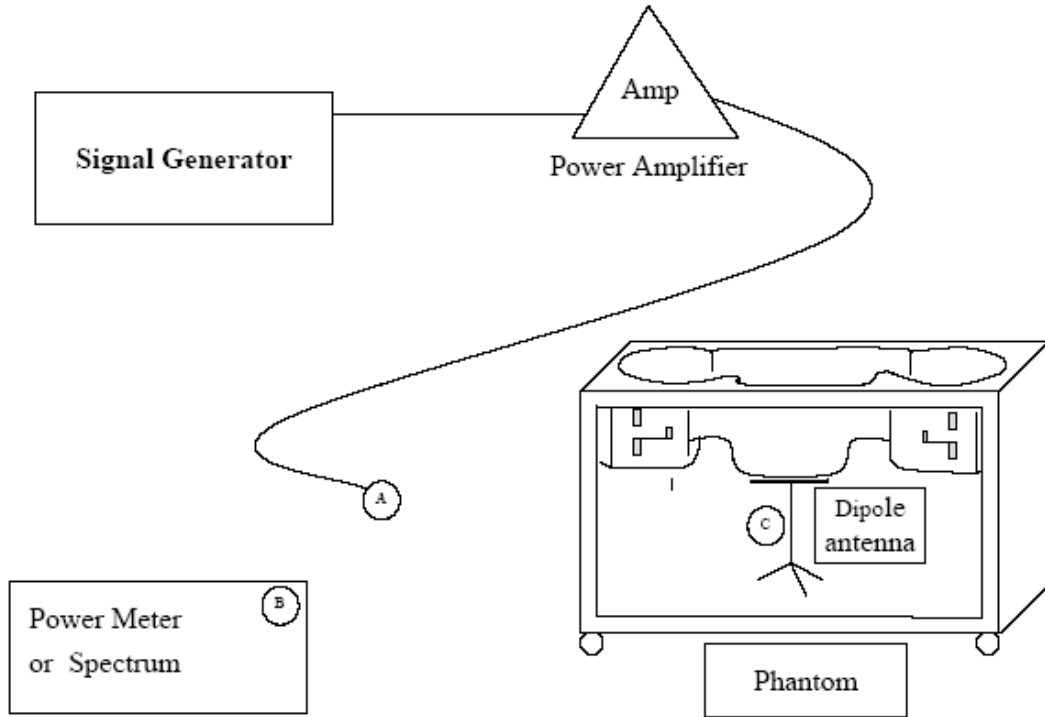
2.10.2 System Performance Check Procedure

The DASY4 installation includes predefined files with recommended procedures for measurements and the system performance check. They are read-only document files and destined as fully defined but unmeasured masks, so the finished system performance check must be saved under a different name. The system performance check document requires the SAM Twin Phantom, so this phantom must be properly installed in your system. (User defined measurement procedures can be created by opening a new document or editing an existing document file). Before you start the system performance check, you need only to tell the system with which components (probe, medium, and device) you are performing the system performance check; the system will take care of all parameters.

- **The Power Reference Measurement and Power Drift Measurement** jobs are located at the beginning and end of the batch process. They measure the field drift at one single point in the liquid over the complete procedure. The indicated drift is mainly the variation of the amplifier output power. If it is too high (above ± 0.1 dB), the system performance check should be repeated; some amplifiers have very high drift during warm-up. A stable amplifier gives drift results in the DASY system below ± 0.02 dB.
- **The Surface Check** job tests the optical surface detection system of the DASY system by repeatedly detecting the surface with the optical and mechanical surface detector and comparing the results. The output gives the detecting heights of both systems, the difference between the two systems and the standard deviation of the detection repeatability. Air bubbles or refraction in the liquid due to separation of the sugar-water mixture gives poor repeatability (above ± 0.1 mm). In that case it is better to abort the system performance check and stir the liquid.
- **The Area Scan** job measures the SAR above the dipole on a plane parallel to the surface. It is used to locate the approximate location of the peak SAR. The proposed scan uses large grid spacing for faster measurement; due to the symmetric field, the peak detection is reliable. Schmid & Partner Engineering AG, DASY4 Manual, February 2005 16-2 System Performance Check Application Notes. If a finer graphic is desired, the grid spacing can be reduced. Grid spacing and orientation have no influence on the SAR result.
- **The Zoom Scan** job measures the field in a volume around the peak SAR value assessed in the previous Area Scan job (for more information see the application note on SAR evaluation). If the system performance check gives reasonable results, the SAR peak, 1 g and 10 g spatial average SAR values normalized to 1W dipole input power give reference data for comparisons. The next sections analyze the expected uncertainties of these values, as well as additional checks for further information or troubleshooting.



2.10.3 System Performance Check Setup



Note :

1. A connected to B is used to make sure whether the input power is 250mW for target frequency..
2. A connected to C is used to input the measured power to dipole antenna

2.10.4 Result of System Performance Check: Valid Result

2450MHz band-Diepole Antenna: D2450V2(S/N:764)

Date of Measurement And Reference Value	SAR@10g [W/kg]	Dielectric Parameters		Temperatures []
		ϵr	σ [S/m]	
Body 2450MHz Recommended Value	6.19 ±10% [5.571 ~ 6.809]	39.2 ±10% [37.24 ~ 41.16]	1.8 ± 5% [1.71 ~ 1.89]	22.0 ± 2 [20 ~ 24]
2009-01-08	6.48	38.4	1.84	22.4



3. Results

3.1. Summary of Test Results

No deviations from the technical specification(s) were ascertained in the course of the tests performed	
The deviations as specified in this chapter were ascertained in the course of the tests Performed.	

3.2. Description for EUT test position

EUT Position	Horizontal-Down	Horizontal-Up	Vertical-Back	Vertical-Front
Description	Orientation A	Orientation B	Orientation C	Orientation D

3.3. Check the conducted power of the worst-case

Mode	Channel	Power(dBm)	Note
IEEE802.11b	11	17.35	worst
IEEE802.11g	11	13.73	
IEEE802.11n, HT20	11	13.65	
IEEE802.11n, HT40	09	13.76	

3.4. Check the position for the worst result

Frequency			USB Orientation	Conducted Power (dBm)			SAR@1g [W/Kg]	Power Drift (dB)	Note
Mode	CH	Mhz		Before	After	Drift			
802.11b	11	2462	A	17.35	17.33	0.02	0.783	-0.085	worst
802.11b	11	2462	B	17.35	17.29	0.06	0.031	-0.252	
802.11b	11	2462	C	17.35	17.31	0.04	0.029	-0.244	
802.11b	11	2462	D	17.35	17.22	0.13	0.257	-0.192	



3.5. Double Check the other mode result

Frequency			USB Orientation	Conducted Power (dBm)			SAR@1g [W/Kg]	Power Drift (dB)	Note
Mode	CH	Mhz		Before	After	Drift			
802.11g	11	2462	A	13.73	13.72	0.02	0.171	-0.145	
802.11n, HT20	11	2462	A	13.65	13.60	0.05	0.17	-0.232	
802.11n, HT40	09	24522	A	13.76	13.69	0.07	0.209	-0.098	
802.11b	01	2412	A	17.28	17.25	0.03	1.1	-0.364	Largest
802.11b	06	2437	A	17.26	17.20	0.06	0.945	-0.067	

The Max Body SAR@2412Mhz @1g was 1.1W/kg, less than limitation of 1.6W/Kg.



3.6. Measurement Position

EUT Orientation A of EUT Position



The horizontal-down of the EUT
EUT Orientation B of EUT Position



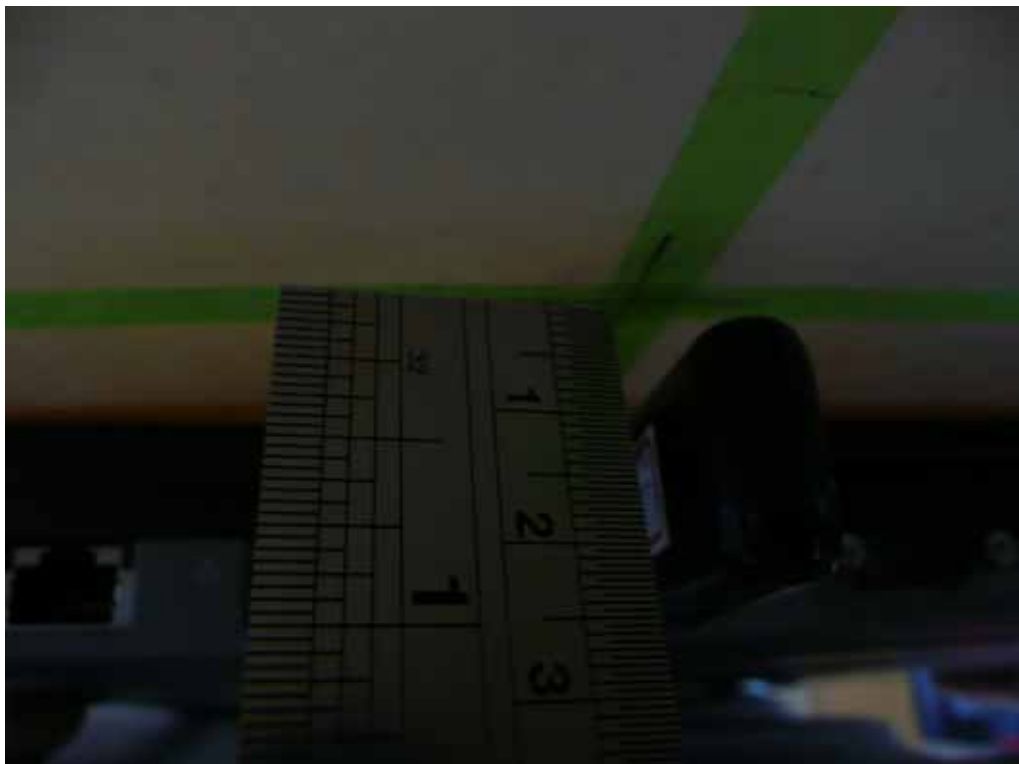
The horizontal-up of the EUT



EUT Orientation C of EUT Position



The Vertical-Back of the EUT to the flat phantom distance 5mm.
EUT Orientation D of EUT Position



The Vertical-front of the EUT to the flat phantom distance 5mm.



4. The Description of Test Procedure for FCC

4.1. Scan Procedure

First coarse scans were used for determination of the field distribution. Next a cube scan, 5x5x7 points covering a volume of 32x32x30mm was performed around the highest E-field value to determine the averaged SAR value. Drift was determined by measuring the same point at the start of the coarse scan and again at the end of the cube scan.

4.2. SAR Averaging Methods

The maximum SAR value was averaged over a cube of tissue using interpolation and extrapolation. The interpolation, extrapolation and maximum search routines within Dasy4 are all based on the modified Quadratic Shepard's method (Robert J. Renka, "Multivariate Interpolation Of Lagre Sets Of Scattered Data", University of North Texas ACM Transactions on Mathematical Software, vol. 14, no. 2, June 1988, pp. 139-148).

The interpolation scheme combines a least-square fitted function method with a weighted average method. A trivariate 3-D / bivariate 2-D quadratic function is computed for each measurement point and fitted to neighbouring points by a least-square method. For the cube scan, inverse distance weighting is incorporated to fit distant points more accurately. The interpolating function is finally calculated as a weighted average of the quadratics. In the cube scan, the interpolation function is used to extrapolate the Peak SAR from the deepest measurement points to the inner surface of the phantom.

4.3. Data Storage

The DASY4 software stores the assessed data from the data acquisition electronics as raw data (in microvolt readings from the probe sensors), together with all the necessary software parameters for the data evaluation (probe calibration data, liquid parameters and device frequency and modulation data) in measurement files with the extension .DA4. The postprocessing software evaluates the desired unit and format for output each time the data is visualized or exported. This allows verification of the complete software setup even after the measurement and allows correction of erroneous parameter settings.

The measured data can be visualized or exported in different units or formats, depending on the selected probe type (e.g., [V/m], [A/m] or [W/kg]). Some of these units are not available in certain situations or give meaningless results, e.g., a SAR-output in a lossless media will always be zero. Raw data can also be exported to perform the evaluation with other software packages.



4.4. Data Evaluation

The DASY4 postprocessing software (SEMCAD) automatically executes the following procedures to calculate the field units from the microvolt readings at the probe connector. The parameters used in the evaluation are stored in the configuration modules of the software:

Probe parameters:	- Sensitivity	$Norm_i, a_{i0}, a_{i1}, a_{i2}$
	- Conversion factor	$ConvF_i$
	- Diode compression point	dep_i
Device parameters:	- Frequency	f
	- Crest factor	cf
Media parameters:	- Conductivity	σ
	- Density	ρ

These parameters must be set correctly in the software. They can be found in the component documents or they can be imported into the software from the configuration files issued for the DASY components. In the direct measuring mode of the multimeter option, the parameters of the actual system setup are used. In the scan visualization and export modes, the parameters stored in the corresponding document files are used.

The first step of the evaluation is a linearization of the filtered input signal to account for the compression characteristics of the detector diode. The compensation depends on the input signal, the diode type and the DC-transmission factor from the diode to the evaluation electronics. If the exciting field is pulsed, the crest factor of the signal must be known to correctly compensate for peak power. The formula for each channel can be given as:

$$V_i = U_i + U_i^2 \cdot \frac{cf}{dep_i}$$

- with V_i = compensated signal of channel i (i = x, y, z)
- U_i = input signal of channel i (i = x, y, z)
- cf = crest factor of exciting field (DASY parameter)
- dep_i = diode compression point (DASY parameter)

From the compensated input signals the primary field data for each channel can be evaluated:

E – fieldprobes : $E_i = \sqrt{\frac{V_i}{Norm_i \cdot ConvF}}$

H – fieldprobes : $H_i = \sqrt{V_i} \cdot \frac{a_{i0} + a_{i1}f + a_{i2}f^2}{f}$



- with V_i = compensated signal of channel i (i = x, y, z)
 $Norm_i$ = sensor sensitivity of channel i (i = x, y, z)
 $\mu V/(V/m)^2$ for E-field Probes
 $ConvF$ = sensitivity enhancement in solution
 a_{ij} = sensor sensitivity factors for H-field probes
 f = carrier frequency [GHz]
 E_i = electric field strength of channel i in V/m
 H_i = magnetic field strength of channel i in A/m

The RSS value of the field components gives the total field strength (Hermitian magnitude):

$$E_{tot} = \sqrt{E_x^2 + E_y^2 + E_z^2}$$

The primary field data are used to calculate the derived field units.

$$SAR = E_{tot}^2 \cdot \frac{\sigma}{\rho \cdot 1'000}$$

- with SAR = local specific absorption rate in mW/g
 E_{tot} = total field strength in V/m
 σ = conductivity in [mho/m] or [Siemens/m]
 ρ = equivalent tissue density in g/cm³

Note that the density is set to 1, to account for actual head tissue density rather than the density of the tissue simulating liquid.



5. Measurement Uncertainty

5.1. Measurement Uncertainty I (According to IEEE1528)

DASY4 Uncertainty Budget According to IEEE 1528								
Error Description	Uncertainty value	Prob. Dist.	Div.	(c_i) 1g	(c_i) 10g	Std. Unc. (1g)	Std. Unc. (10g)	(v_i) v_{eff}
Measurement System								
Probe Calibration	±5.9%	N	1	1	1	±5.9%	±5.9%	∞
Axial Isotropy	±4.7%	R	$\sqrt{3}$	0.7	0.7	±1.9%	±1.9%	∞
Hemispherical Isotropy	±9.6%	R	$\sqrt{3}$	0.7	0.7	±3.9%	±3.9%	∞
Boundary Effects	±1.0%	R	$\sqrt{3}$	1	1	±0.6%	±0.6%	∞
Linearity	±4.7%	R	$\sqrt{3}$	1	1	±2.7%	±2.7%	∞
System Detection Limits	±1.0%	R	$\sqrt{3}$	1	1	±0.6%	±0.6%	∞
Readout Electronics	±0.3%	N	1	1	1	±0.3%	±0.3%	∞
Response Time	±0.8%	R	$\sqrt{3}$	1	1	±0.5%	±0.5%	∞
Integration Time	±2.6%	R	$\sqrt{3}$	1	1	±1.5%	±1.5%	∞
RF Ambient Noise	±3.0%	R	$\sqrt{3}$	1	1	±1.7%	±1.7%	∞
RF Ambient Reflections	±3.0%	R	$\sqrt{3}$	1	1	±1.7%	±1.7%	∞
Probe Positioner	±0.4%	R	$\sqrt{3}$	1	1	±0.2%	±0.2%	∞
Probe Positioning	±2.9%	R	$\sqrt{3}$	1	1	±1.7%	±1.7%	∞
Max. SAR Eval.	±1.0%	R	$\sqrt{3}$	1	1	±0.6%	±0.6%	∞
Test Sample Related								
Device Positioning	±2.9%	N	1	1	1	±2.9%	±2.9%	145
Device Holder	±3.6%	N	1	1	1	±3.6%	±3.6%	5
Power Drift	±5.0%	R	$\sqrt{3}$	1	1	±2.9%	±2.9%	∞
Phantom and Setup								
Phantom Uncertainty	±4.0%	R	$\sqrt{3}$	1	1	±2.3%	±2.3%	∞
Liquid Conductivity (target)	±5.0%	R	$\sqrt{3}$	0.64	0.43	±1.8%	±1.2%	∞
Liquid Conductivity (meas.)	±2.5%	N	1	0.64	0.43	±1.6%	±1.1%	∞
Liquid Permittivity (target)	±5.0%	R	$\sqrt{3}$	0.6	0.49	±1.7%	±1.4%	∞
Liquid Permittivity (meas.)	±2.5%	N	1	0.6	0.49	±1.5%	±1.2%	∞
Combined Std. Uncertainty						±10.9%	±10.7%	387
Expanded STD Uncertainty						±21.9%	±21.4%	



5.2. Measurement Uncertainty II (According to IEC 62209)

DASY4 Uncertainty Budget According to IEC 62209-1								
Error Description	Uncertainty value	Prob. Dist.	Div.	(c_i) 1g	(c_i) 10g	Std. Unc. (1g)	Std. Unc. (10g)	(v_i) v_{eff}
Measurement System								
Measurement System								
Probe Calibration	±5.9 %	N	1	1	1	±5.9 %	±5.9 %	∞
Axial Isotropy	±4.7 %	R	$\sqrt{3}$	0.7	0.7	±1.9 %	±1.9 %	∞
Hemispherical Isotropy	±9.6 %	R	$\sqrt{3}$	0.7	0.7	±3.9 %	±3.9 %	∞
Boundary Effects	±1.0 %	R	$\sqrt{3}$	1	1	±0.6 %	±0.6 %	∞
Linearity	±4.7 %	R	$\sqrt{3}$	1	1	±2.7 %	±2.7 %	∞
System Detection Limits	±1.0 %	R	$\sqrt{3}$	1	1	±0.6 %	±0.6 %	∞
Readout Electronics	±0.3 %	N	1	1	1	±0.3 %	±0.3 %	∞
Response Time	±0.8 %	R	$\sqrt{3}$	1	1	±0.5 %	±0.5 %	∞
Integration Time	±2.6 %	R	$\sqrt{3}$	1	1	±1.5 %	±1.5 %	∞
RF Ambient Noise	±3.0 %	R	$\sqrt{3}$	1	1	±1.7 %	±1.7 %	∞
RF Ambient Reflections	±3.0 %	R	$\sqrt{3}$	1	1	±1.7 %	±1.7 %	∞
Probe Positioner	±0.4 %	R	$\sqrt{3}$	1	1	±0.2 %	±0.2 %	∞
Probe Positioning	±2.9 %	R	$\sqrt{3}$	1	1	±1.7 %	±1.7 %	∞
Max. SAR Eval.	±1.0 %	R	$\sqrt{3}$	1	1	±0.6 %	±0.6 %	∞
Test Sample Related								
Device Positioning	±2.9 %	N	1	1	1	±2.9 %	±2.9 %	145
Device Holder	±3.6 %	N	1	1	1	±3.6 %	±3.6 %	5
Power Drift	±5.0 %	R	$\sqrt{3}$	1	1	±2.9 %	±2.9 %	∞
Phantom and Setup								
Phantom Uncertainty	±4.0 %	R	$\sqrt{3}$	1	1	±2.3 %	±2.3 %	∞
Liquid Conductivity (target)	±5.0 %	R	$\sqrt{3}$	0.64	0.43	±1.8 %	±1.2 %	∞
Liquid Conductivity (meas.)	±2.5 %	N	1	0.64	0.43	±1.6 %	±1.1 %	∞
Liquid Permittivity (target)	±5.0 %	R	$\sqrt{3}$	0.6	0.49	±1.7 %	±1.4 %	∞
Liquid Permittivity (meas.)	±2.5 %	N	1	0.6	0.49	±1.5 %	±1.2 %	∞
Combined Std. Uncertainty						±10.9 %	±10.7 %	387
Expanded STD Uncertainty						±21.9 %	±21.4 %	



6. Reference

1. [ANSI/IEEE C95.1-1992]

Safety Levels with Respect to Human Exposure to Radio Frequency Electromagnetic Fields, 3 kHz to 300 GHz. The Institute of Electrical and Electronics Engineers, Inc. (IEEE), 1992.

2. [ANSI/IEEE C95.3-1992]

Recommended Practice for the Measurement of Potentially Hazardous Electromagnetic Fields - RF and Microwave". The Institute of Electrical and Electronics Engineers, Inc. (IEEE), 1992.

3. [FCC Report and Order 96-326]

Federal Communications Commission, "Report and order: Guidelines for evaluating the environmental effects of radiofrequency radiation", Tech. Rep. FCC 96-326, 1996.

4. [FCC OET Bulletin 65]

Evaluating Compliance with FCC Guidelines for Human Exposure to Radiofrequency Electromagnetic Fields. OET Bulletin 65 Edition 97-01, August 1997. Federal Communications Commission (FCC), Office of Engineering & Technology. (OET)

5. [FCC OET Bulletin 65 Supplement C]

Additional Information for Evaluating Compliance of Mobile and Portable Device with FCC Limits for Human Exposure to Radiofrequency Emissions. Supplement C (Edition 01-01) to OET Bulletin 65, June 2001. Federal Communications Commission (FCC), Office of Engineering & Technology. (OET)

6. [DASY 4]

Schmid & Partner Engineering AG: DASY 4 Manual, September 2005.

7. [IEEE 1528-2003]

IEEE Std 1528-2003: IEEE Recommended Practice for Determining the Peak Spatial-Average Specific Absorption Rate (SAR) in the Human Head from Wireless Communications Devices: Measurement Techniques. 1528-2003, 19th December, 2003, The Institute of Electrical and Electronics Engineers, Inc. (IEEE).

8. [RSS-102, Issue 2]

Radio Standards Specification 102, Radio Frequency Exposure Compliance of Radiocommunication Apparatus (All Frequency Bands) sets out the requirements and measurement techniques used to evaluate radio frequency (RF) exposure compliance of radiocommunication apparatus designed to be used within the vicinity of the human body. November, 2005. Industry Canada.

9. [Health Canada Safety Code 6]

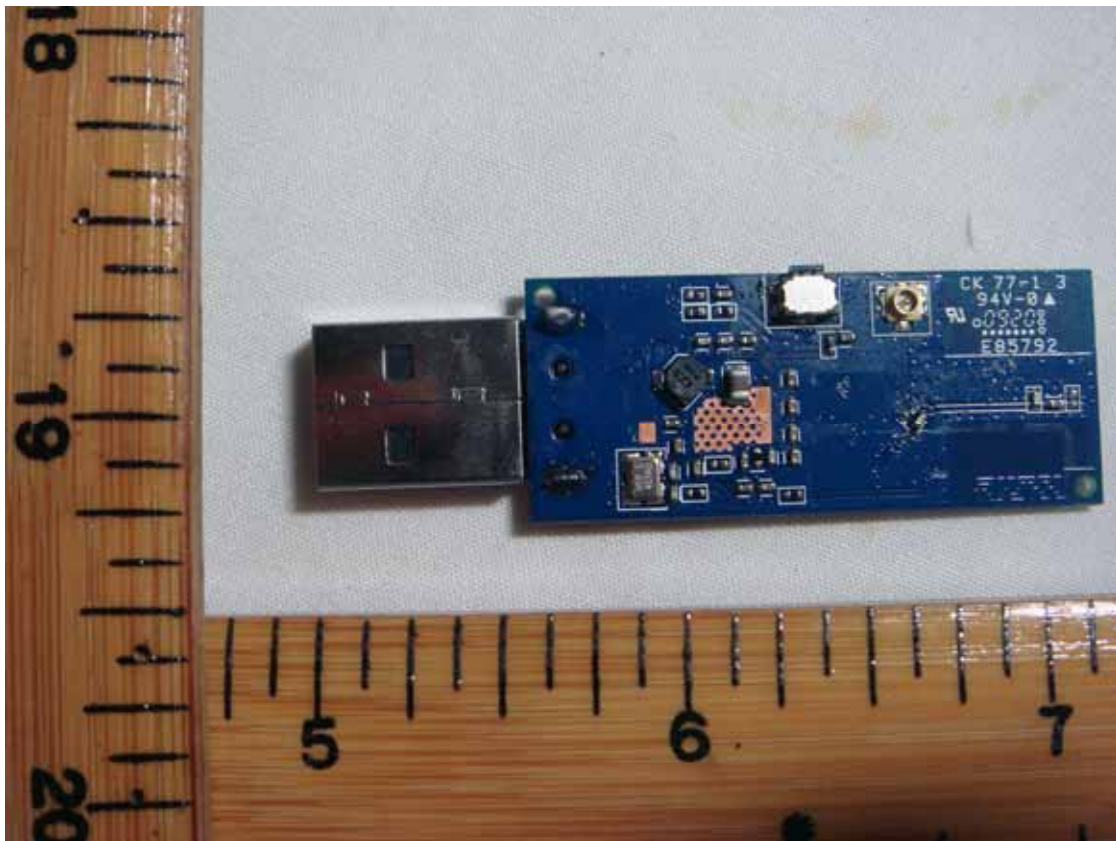
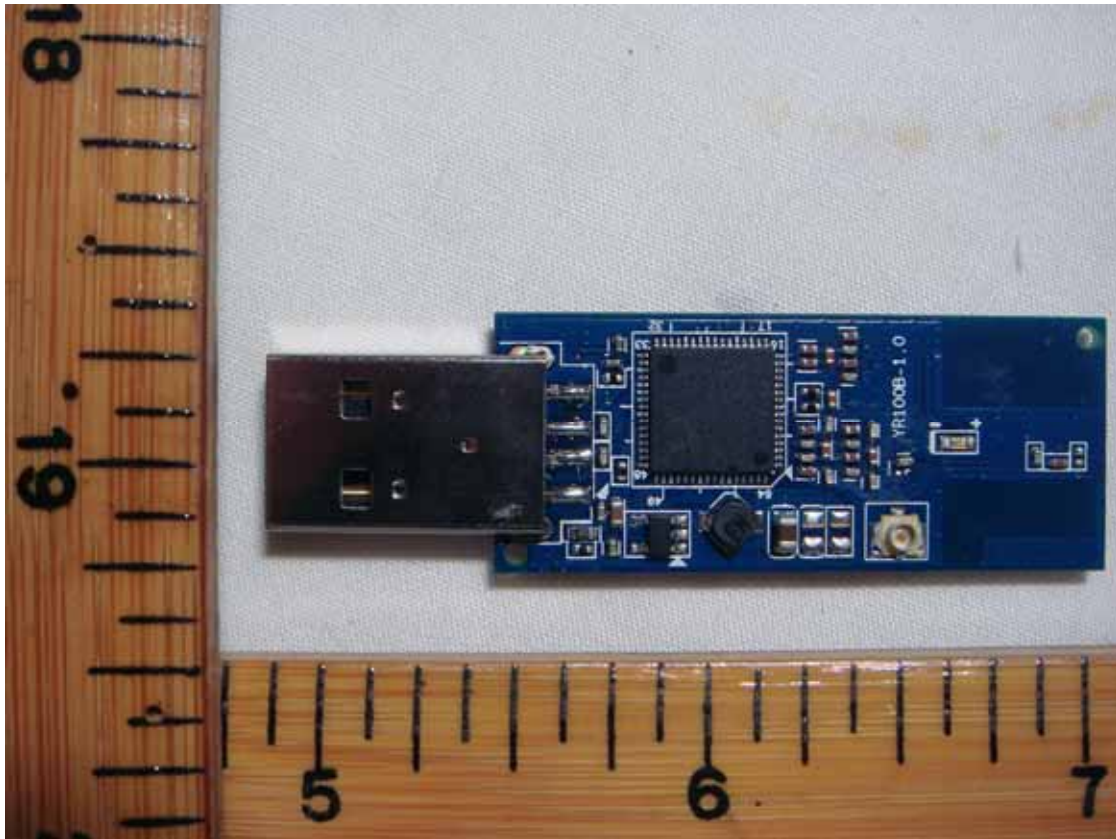
Canada's Safety Code 6: Limits of Human Exposure to Radiofrequency Electromagnetic Fields in the Frequency Range from 3Khz to 300Ghz (99-EHD-237).



Appendix A. Photographs of EUT









Appendix B. SAR Results

Orientation A

USB Dongle_IEEE802.11b_CH11_2462MHz_down

DUT: USB Wireless; Type:000000; Serial: 0000000000000000

Communication System: IEEE 802.11b; Frequency: 2462 MHz;Duty Cycle: 1:1
Medium: MSL 2450MHz Medium parameters used: $f = 2462$ MHz; $\sigma = 2$ mho/m; $\epsilon_r = 52.1$; $\rho = 1000$ kg/m³
Phantom section: Flat Section

DASY4 Configuration:

- Probe: ES3DV3 - SN3153; ConvF(5.25, 5.25, 5.25); Calibrated: 2008/3/4
- Sensor-Surface: 4mm (Mechanical Surface Detection)
- Electronics: DAE3 Sn571; Calibrated: 2008/1/25
- Phantom: SAM with CRP; Type: SAM; Serial: TP:1281
- Measurement SW: DASY4, V4.7 Build 44; Postprocessing SW: SEMCAD, V1.8 Build 171

USB Dongle_IEEE802.11b_CH11_2462MHz/Area Scan (61x81x1): Measurement grid:

dx=10mm, dy=10mm

Maximum value of SAR (interpolated) = 0.939 mW/g

USB Dongle_IEEE802.11b_CH11_2462MHz/Zoom Scan (5x5x7)/Cube 0:

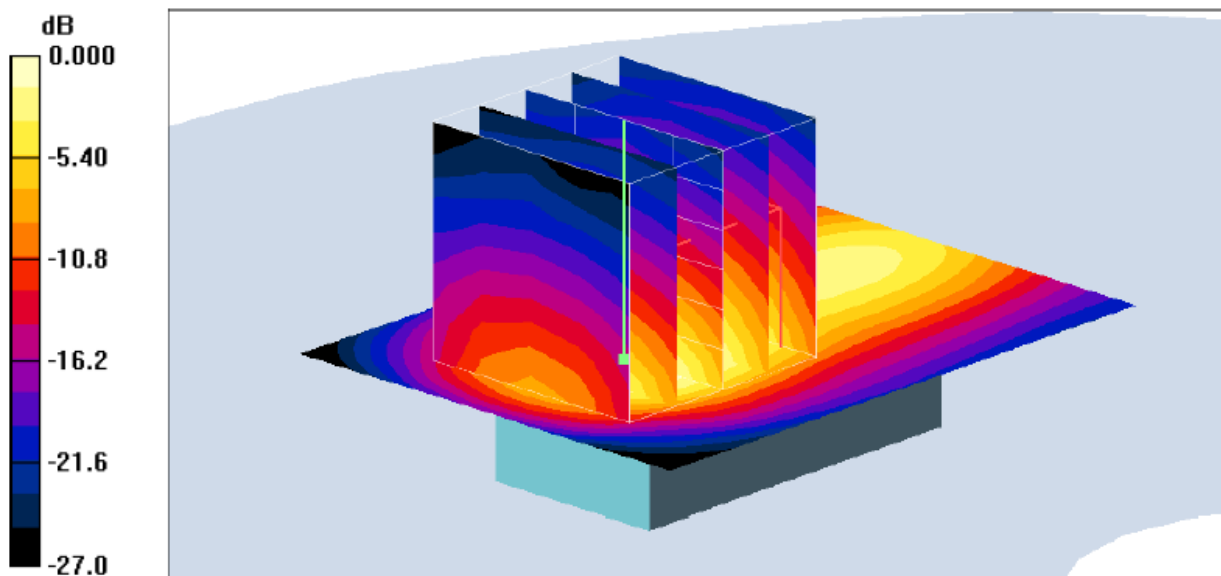
Measurement grid: dx=8mm, dy=8mm, dz=5mm

Reference Value = 21.6 V/m; Power Drift = -0.085 dB

Peak SAR (extrapolated) = 1.93 W/kg

SAR(1 g) = 0.783 mW/g; SAR(10 g) = 0.332 mW/g

Maximum value of SAR (measured) = 0.813 mW/g



0 dB = 0.813mW/g



Orientation B

USB Dongle_IEEE802.11b_CH11_2462MHz_down

DUT: USB Wireless; Type:000000; Serial: 0000000000000000

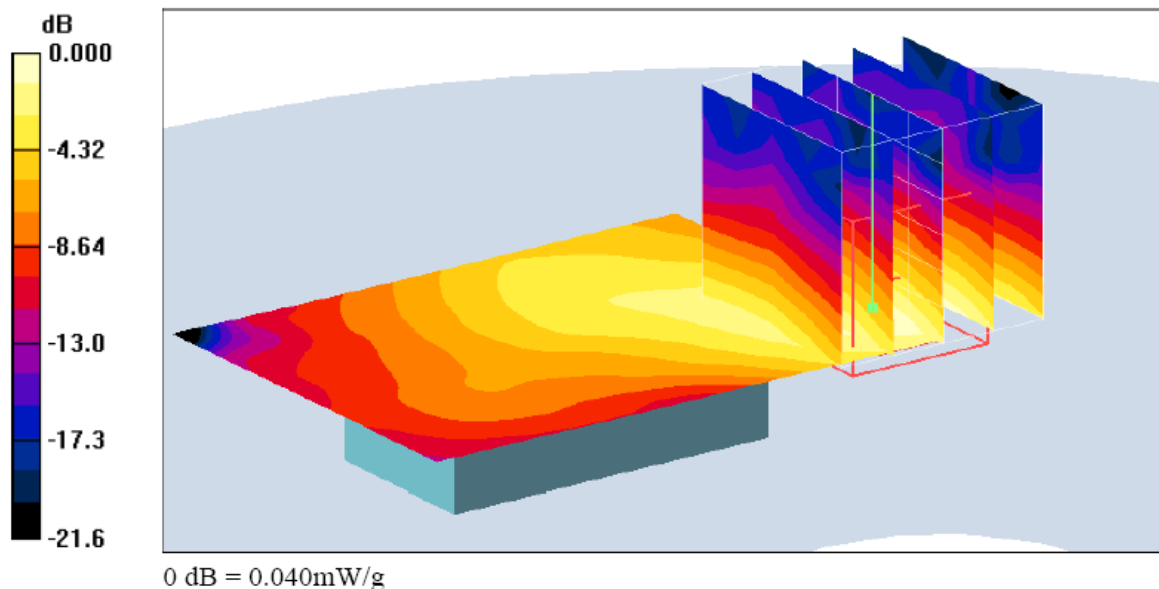
Communication System: IEEE 802.11b; Frequency: 2462 MHz;Duty Cycle: 1:1
Medium: MSL 2450MHz Medium parameters used: $f = 2462 \text{ MHz}$; $\sigma = 2 \text{ mho/m}$; $\epsilon_r = 52.1$; $\rho = 1000 \text{ kg/m}^3$
Phantom section: Flat Section

DASY4 Configuration:

- Probe: ES3DV3 - SN3153; ConvF(5.25, 5.25, 5.25); Calibrated: 2008/3/4
- Sensor-Surface: 4mm (Mechanical Surface Detection)
- Electronics: DAE3 Sn571; Calibrated: 2008/1/25
- Phantom: SAM with CRP; Type: SAM; Serial: TP:1281
- Measurement SW: DASY4, V4.7 Build 44; Postprocessing SW: SEMCAD, V1.8 Build 171

USB Dongle_IEEE802.11b_CH11_2462MHz/Area Scan (61x81x1): Measurement grid:
 $dx=10\text{mm}$, $dy=10\text{mm}$
Maximum value of SAR (interpolated) = 0.039 mW/g

USB Dongle_IEEE802.11b_CH11_2462MHz/Zoom Scan (5x5x7)/Cube 0:
Measurement grid: $dx=8\text{mm}$, $dy=8\text{mm}$, $dz=5\text{mm}$
Reference Value = 2.21 V/m; Power Drift = 0.237 dB
Peak SAR (extrapolated) = 0.068 W/kg
SAR(1 g) = 0.036 mW/g; SAR(10 g) = 0.019 mW/g
Maximum value of SAR (measured) = 0.040 mW/g





Orientation C

USB Dongle_IEEE802.11b_CH11_2462MHz_V-Front

DUT: USB Wireless; Type:000000; Serial: 0000000000000000

Communication System: IEEE 802.11b; Frequency: 2462 MHz;Duty Cycle: 1:1
Medium: MSL 2450MHz Medium parameters used: $f = 2462 \text{ MHz}$; $\sigma = 2 \text{ mho/m}$; $\epsilon_r = 52.1$; $\rho = 1000 \text{ kg/m}^3$
Phantom section: Flat Section

DASY4 Configuration:

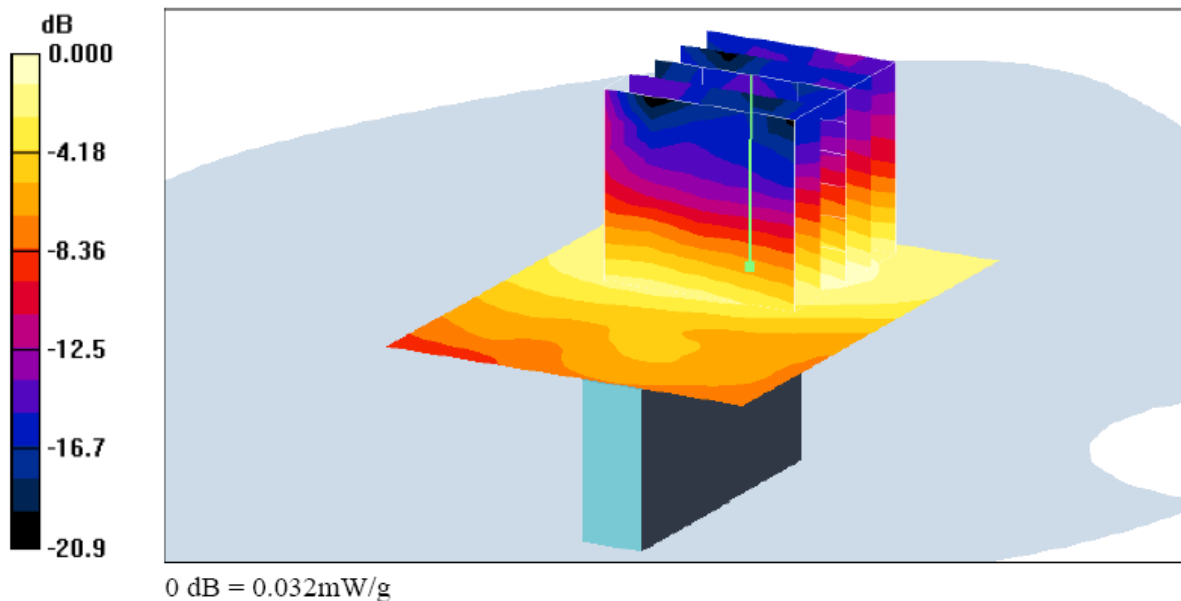
- Probe: ES3DV3 - SN3153; ConvF(5.25, 5.25, 5.25); Calibrated: 2008/3/4
- Sensor-Surface: 4mm (Mechanical Surface Detection)
- Electronics: DAE3 Sn571; Calibrated: 2008/1/25
- Phantom: SAM with CRP; Type: SAM; Serial: TP:1281
- Measurement SW: DASY4, V4.7 Build 44; Postprocessing SW: SEMCAD, V1.8 Build 171

USB Dongle_IEEE802.11b_CH11_2462MHz/Area Scan (61x81x1): Measurement grid:

$dx=10\text{mm}$, $dy=10\text{mm}$
Maximum value of SAR (interpolated) = 0.031 mW/g

USB Dongle_IEEE802.11b_CH11_2462MHz/Zoom Scan (5x5x7)/Cube 0:

Measurement grid: $dx=8\text{mm}$, $dy=8\text{mm}$, $dz=5\text{mm}$
Reference Value = 2.36 V/m; Power Drift = -0.244 dB
Peak SAR (extrapolated) = 0.051 W/kg
SAR(1 g) = 0.029 mW/g; SAR(10 g) = 0.015 mW/g
Maximum value of SAR (measured) = 0.032 mW/g





Orientation D

USB Dongle _IEEE802.11b _CH11_2462MHz _V-Front

DUT: USB Wireless; Type:000000; Serial: 0000000000000000

Communication System: IEEE 802.11b; Frequency: 2462 MHz;Duty Cycle: 1:1
Medium: MSL 2450MHz Medium parameters used: $f = 2462 \text{ MHz}$; $\sigma = 2 \text{ mho/m}$; $\epsilon_r = 52.1$; $\rho = 1000 \text{ kg/m}^3$
Phantom section: Flat Section

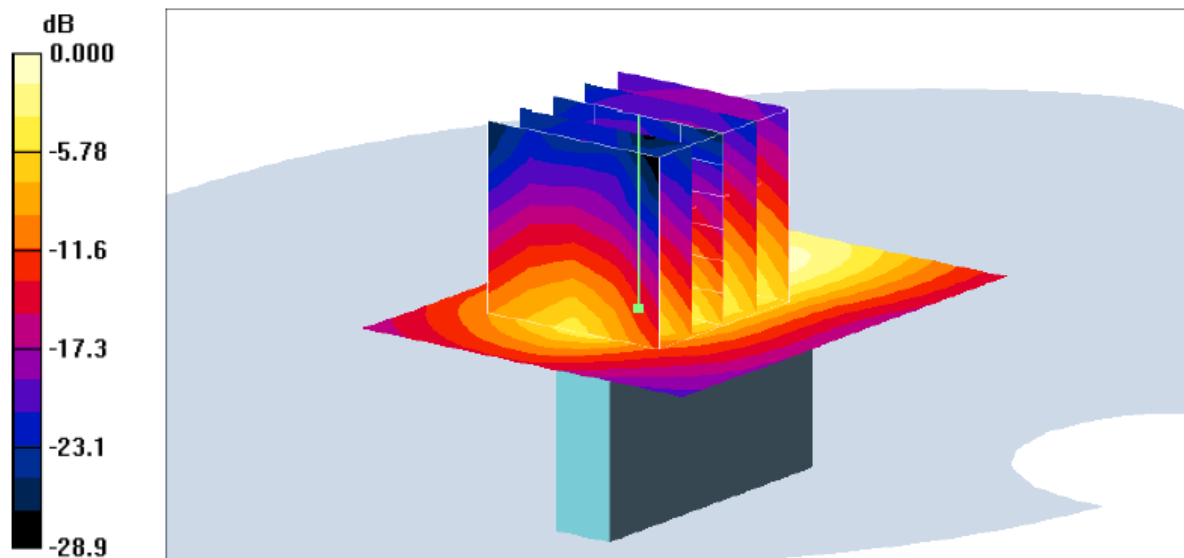
DASY4 Configuration:

- Probe: ES3DV3 - SN3153; ConvF(5.25, 5.25, 5.25); Calibrated: 2008/3/4
- Sensor-Surface: 4mm (Mechanical Surface Detection)
- Electronics: DAE3 Sn571; Calibrated: 2008/1/25
- Phantom: SAM with CRP; Type: SAM; Serial: TP:1281
- Measurement SW: DASY4, V4.7 Build 44; Postprocessing SW: SEMCAD, V1.8 Build 171

USB Dongle _IEEE802.11b _CH11_2462MHz/Area Scan (61x81x1): Measurement grid: $dx=10\text{mm}$, $dy=10\text{mm}$
Maximum value of SAR (interpolated) = 0.317 mW/g

USB Dongle _IEEE802.11b _CH11_2462MHz/Zoom Scan (5x5x7)/Cube 0:
Measurement grid: $dx=8\text{mm}$, $dy=8\text{mm}$, $dz=5\text{mm}$
Reference Value = 11.8 V/m; Power Drift = -0.192 dB
Peak SAR (extrapolated) = 0.616 W/kg
SAR(1 g) = 0.257 mW/g; SAR(10 g) = 0.115 mW/g

Maximum value of SAR (measured) = 0.304 mW/g





Orientation A

USB Dongle_IEEE802.11g_CH11_2462MHz_down

DUT: USB Wireless; Type:000000; Serial: 0000000000000000

Communication System: IEEE 802.11g; Frequency: 2462 MHz;Duty Cycle: 1:1
Medium: MSL 2450MHz Medium parameters used: $f = 2462$ MHz; $\sigma = 2$ mho/m; $\epsilon_r = 52.1$; $\rho = 1000$ kg/m³
Phantom section: Flat Section

DASY4 Configuration:

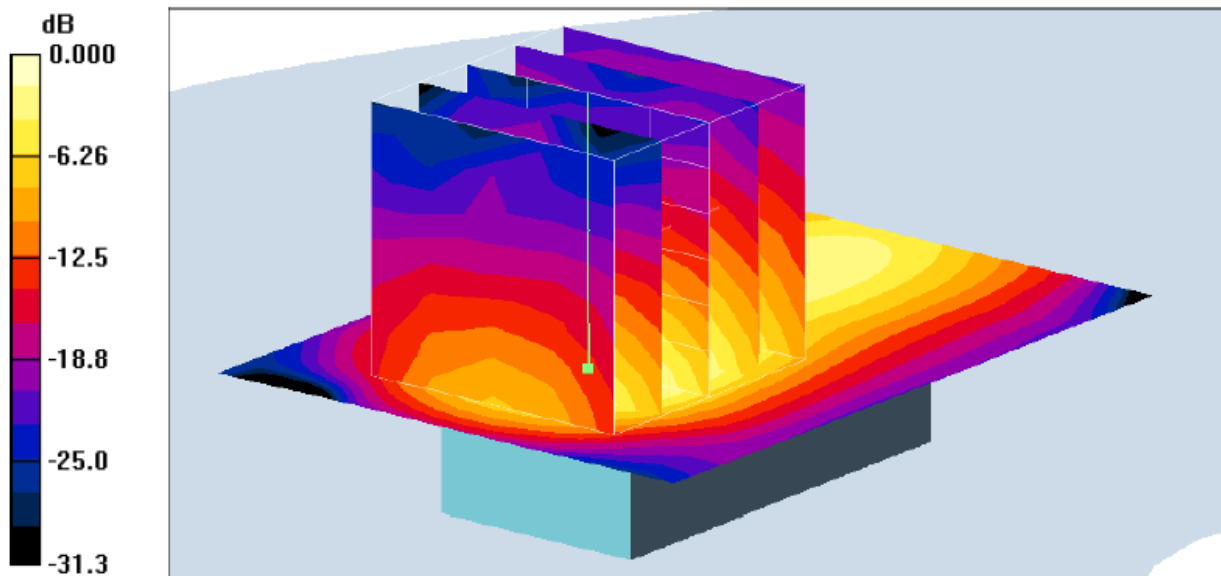
- Probe: ES3DV3 - SN3153; ConvF(5.25, 5.25, 5.25); Calibrated: 2008/3/4
- Sensor-Surface: 4mm (Mechanical Surface Detection)
- Electronics: DAE3 Sn571; Calibrated: 2008/1/25
- Phantom: SAM with CRP; Type: SAM; Serial: TP:1281
- Measurement SW: DASY4, V4.7 Build 44; Postprocessing SW: SEMCAD, V1.8 Build 171

USB Dongle_IEEE802.11g_CH11_2462MHz/Area Scan (61x81x1): Measurement grid: dx=10mm, dy=10mm

Maximum value of SAR (interpolated) = 0.207 mW/g

USB Dongle_IEEE802.11g_CH11_2462MHz/Zoom Scan (5x5x7)/Cube 0:

Measurement grid: dx=8mm, dy=8mm, dz=5mm
Reference Value = 10.3 V/m; Power Drift = -0.145 dB
Peak SAR (extrapolated) = 0.421 W/kg
SAR(1 g) = 0.171 mW/g; SAR(10 g) = 0.073 mW/g
Maximum value of SAR (measured) = 0.180 mW/g



0 dB = 0.180mW/g



Orientation A

USB Dongle_IEEE802.11n_HT20_CH11_2462MHz_down

DUT: USB Wireless; Type:000000; Serial: 0000000000000000

Communication System: 802.11 n HT20; Frequency: 2462 MHz;Duty Cycle: 1:1
Medium: MSL 2450MHz Medium parameters used: $f = 2462 \text{ MHz}$; $\sigma = 2 \text{ mho/m}$; $\epsilon_r = 52.1$; $\rho = 1000 \text{ kg/m}^3$
Phantom section: Flat Section

DASY4 Configuration:

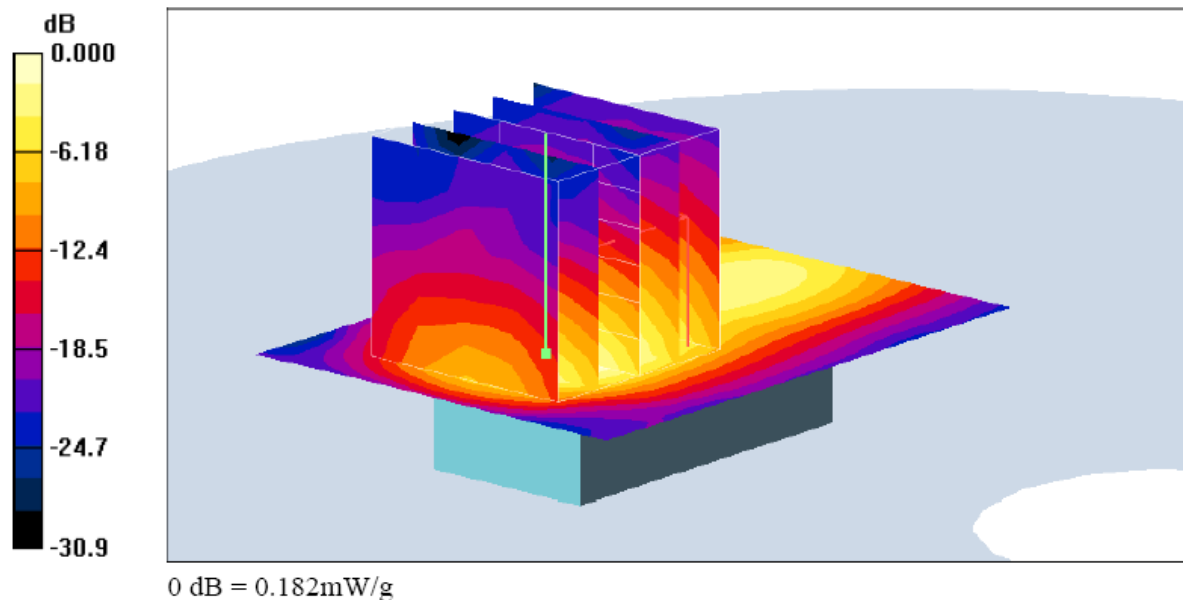
- Probe: ES3DV3 - SN3153; ConvF(5.25, 5.25, 5.25); Calibrated: 2008/3/4
- Sensor-Surface: 4mm (Mechanical Surface Detection)
- Electronics: DAE3 Sn571; Calibrated: 2008/1/25
- Phantom: SAM with CRP; Type: SAM; Serial: TP:1281
- Measurement SW: DASY4, V4.7 Build 44; Postprocessing SW: SEMCAD, V1.8 Build 171

USB Dongle_IEEE802.11n_HT20_CH11_2462MHz/Area Scan (61x81x1):

Measurement grid: $dx=10\text{mm}$, $dy=10\text{mm}$
Maximum value of SAR (interpolated) = 0.209 mW/g

USB Dongle_IEEE802.11n_HT20_CH11_2462MHz/Zoom Scan (5x5x7)/Cube 0:

Measurement grid: $dx=8\text{mm}$, $dy=8\text{mm}$, $dz=5\text{mm}$
Reference Value = 10.2 V/m; Power Drift = -0.232 dB
Peak SAR (extrapolated) = 0.428 W/kg
SAR(1 g) = 0.170 mW/g; SAR(10 g) = 0.071 mW/g
Maximum value of SAR (measured) = 0.182 mW/g





Orientation A

USB Dongle_IEEE802.11n_HT40_CH9_2452MHz_down

DUT: USB Wireless; Type:000000; Serial: 0000000000000000

Communication System: 802.11 n HT40; Frequency: 2452 MHz;Duty Cycle: 1:1
Medium: MSL 2450MHz Medium parameters used: $f = 2452$ MHz; $\sigma = 1.99$ mho/m; $\epsilon_r = 52.1$; $\rho = 1000$ kg/m³
Phantom section: Flat Section

DASY4 Configuration:

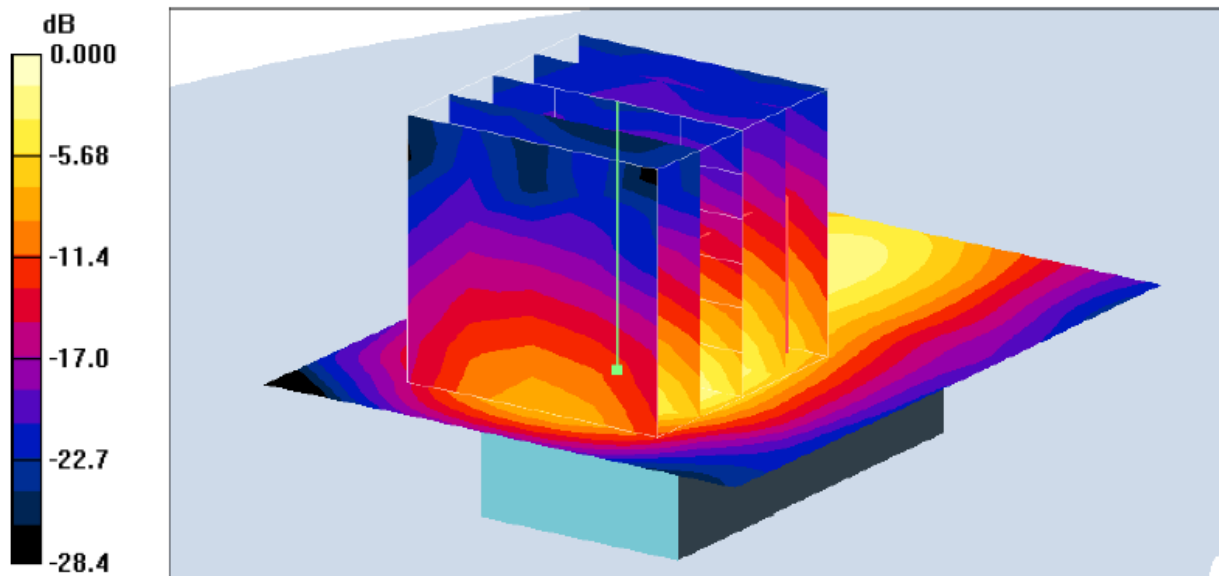
- Probe: ES3DV3 - SN3153; ConvF(5.25, 5.25, 5.25); Calibrated: 2008/3/4
- Sensor-Surface: 4mm (Mechanical Surface Detection)
- Electronics: DAE3 Sn571; Calibrated: 2008/1/25
- Phantom: SAM with CRP; Type: SAM; Serial: TP:1281
- Measurement SW: DASY4, V4.7 Build 44; Postprocessing SW: SEMCAD, V1.8 Build 171

USB Dongle_IEEE802.11n_HT40_CH9_2452MHz/Area Scan (61x81x1):

Measurement grid: dx=10mm, dy=10mm
Maximum value of SAR (interpolated) = 0.254 mW/g

USB Dongle_IEEE802.11n_HT40_CH9_2452MHz/Zoom Scan (5x5x7)/Cube 0:

Measurement grid: dx=8mm, dy=8mm, dz=5mm
Reference Value = 11.3 V/m; Power Drift = -0.089 dB
Peak SAR (extrapolated) = 0.522 W/kg
SAR(1 g) = 0.209 mW/g; SAR(10 g) = 0.088 mW/g
Maximum value of SAR (measured) = 0.222 mW/g



0 dB = 0.222mW/g



Orientation A

USB Dongle_IEEE802.11b_CH1_2412MHz_down

DUT: USB Wireless; Type:000000; Serial: 0000000000000000

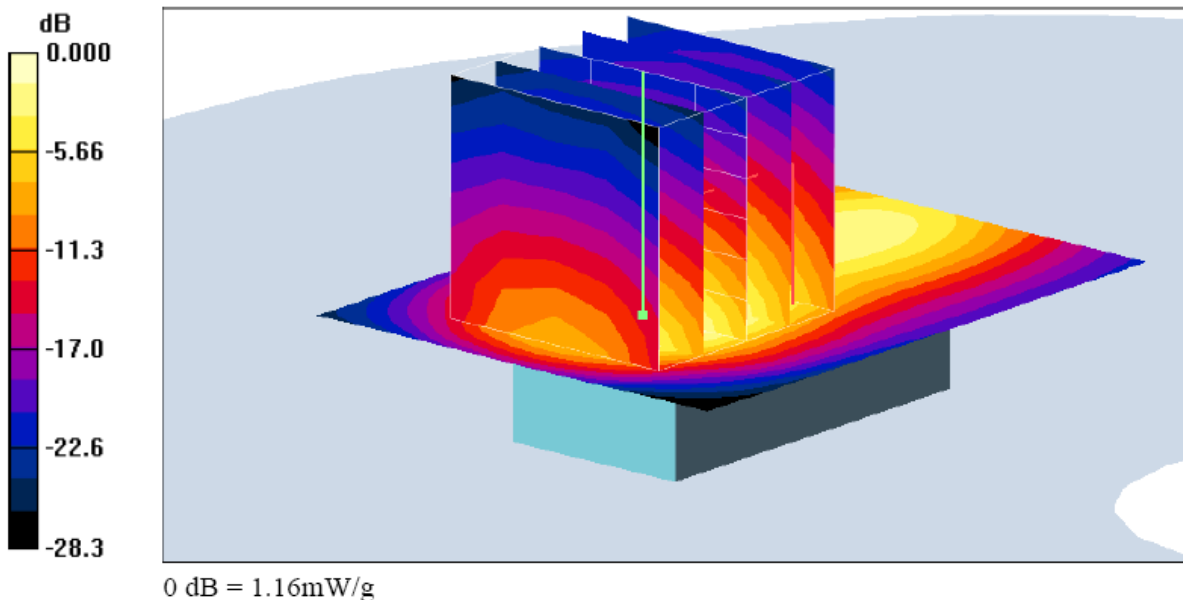
Communication System: IEEE 802.11b; Frequency: 2412 MHz;Duty Cycle: 1:1
Medium: MSL 2450MHz Medium parameters used: $f = 2412$ MHz; $\sigma = 1.94$ mho/m; $\epsilon_r = 52.3$; $\rho = 1000$ kg/m³
Phantom section: Flat Section

DASY4 Configuration:

- Probe: ES3DV3 - SN3153; ConvF(5.25, 5.25, 5.25); Calibrated: 2008/3/4
- Sensor-Surface: 4mm (Mechanical Surface Detection)
- Electronics: DAE3 Sn571; Calibrated: 2008/1/25
- Phantom: SAM with CRP; Type: SAM; Serial: TP:1281
- Measurement SW: DASY4, V4.7 Build 44; Postprocessing SW: SEMCAD, V1.8 Build 171

USB Dongle_IEEE802.11b_CH1_2412MHz/Area Scan (61x81x1): Measurement grid: dx=10mm, dy=10mm
Maximum value of SAR (interpolated) = 1.37 mW/g

USB Dongle_IEEE802.11b_CH1_2412MHz/Zoom Scan (5x5x7)/Cube 0: Measurement grid: dx=8mm, dy=8mm, dz=5mm
Reference Value = 26.6 V/m; Power Drift = -0.364 dB
Peak SAR (extrapolated) = 2.74 W/kg
SAR(1 g) = 1.1 mW/g; SAR(10 g) = 0.467 mW/g
Maximum value of SAR (measured) = 1.16 mW/g





Orientation A

USB Dongle_IEEE802.11b_CH6_2437MHz_down

DUT: USB Wireless; Type:000000; Serial: 0000000000000000

Communication System: IEEE 802.11b; Frequency: 2437 MHz;Duty Cycle: 1:1
Medium: MSL 2450MHz Medium parameters used: $f = 2437 \text{ MHz}$; $\sigma = 1.97 \text{ mho/m}$; $\epsilon_r = 52.2$; $\rho = 1000 \text{ kg/m}^3$
Phantom section: Flat Section

DASY4 Configuration:

- Probe: ES3DV3 - SN3153; ConvF(5.25, 5.25, 5.25); Calibrated: 2008/3/4
- Sensor-Surface: 4mm (Mechanical Surface Detection)
- Electronics: DAE3 Sn571; Calibrated: 2008/1/25
- Phantom: SAM with CRP; Type: SAM; Serial: TP:1281
- Measurement SW: DASY4, V4.7 Build 44; Postprocessing SW: SEMCAD, V1.8 Build 171

USB Dongle_IEEE802.11b_CH6_2437MHz/Area Scan (61x81x1): Measurement grid:
 $dx=10\text{mm}$, $dy=10\text{mm}$
Maximum value of SAR (interpolated) = 1.13 mW/g

USB Dongle_IEEE802.11b_CH6_2437MHz/Zoom Scan (5x5x7)/Cube 0: Measurement grid: $dx=8\text{mm}$, $dy=8\text{mm}$, $dz=5\text{mm}$
Reference Value = 23.8 V/m; Power Drift = -0.067 dB
Peak SAR (extrapolated) = 2.36 W/kg
SAR(1 g) = 0.945 mW/g; SAR(10 g) = 0.400 mW/g
Maximum value of SAR (measured) = 1.00 mW/g

