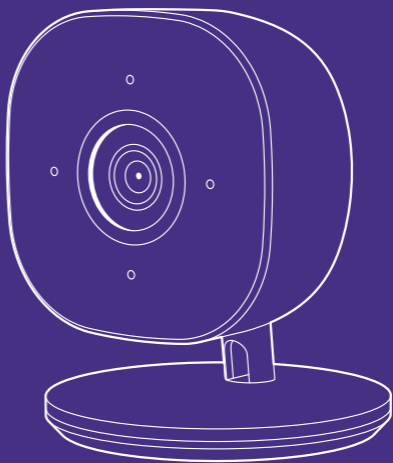


Welcome to your
Camera



Contents

Introduction to Your Camera	2
Features	2
Components	4
Installing the Product	7
Launching the App	10
Mounting on the Wall	13
Specifications	15
Works with SmartThings	17

Introduction to Your Camera

This SmartThings Cam can monitor your home and then alert any suspected motions in real time.

Features

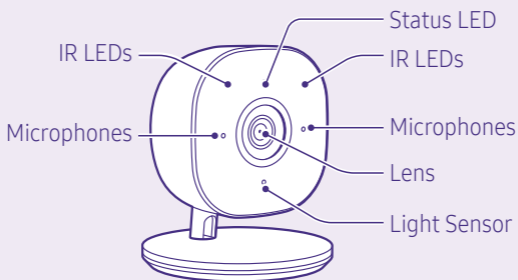
- **Standalone system:** Equipped with CPU and video encoder for operation, which requires only power and network connections.
- **HD video:** Supports up to 1080p HD video with H.264 encoding.
- **Trusted Platform Module (TPM):** Its dedicated chip safely shields cryptographic keys used for authentication to ensure safe communication between network components and encrypted video data.
- **Built-in microphone:** Used for bi-directional conversation.

- **2 IR LEDs:** Can provide illumination up to 5 meters away for better video quality.
- **High dynamic range (HDR):** Balances the illumination for clear image quality.
- **Motion detection zone:** Can be changed by dragging or tapping areas for motion monitoring.
- **Recording time:** Can be specified to let the camera record video upon motion detection.

Introduction to Your Camera

Components

Front panel

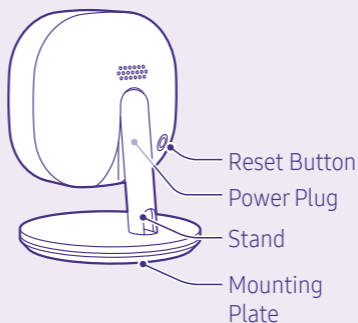


Component	Description
Status LED	Off: No power supplied
	Blue On: Power supplied
	Slow blinking of Blue: Booting in progress
	Fast blinking of Blue: Rebooted with default settings

Component	Description
Status LED	Green On: Wireless network connected
	Fast blinking of Green: Data communication in progress
	Amber On: Firmware upgrade failed. Then the camera reboots after 5 seconds
	Fast blinking of Amber: Camera available for softAp or QR scan
	Blinking of Blue and Amber: Upgrading the firmware
Lens	Fixed camera lens
IR Sensors	Used for illumination
Microphones	Used for conversation
Light Sensor	Used to detect light

Introduction to Your Camera

Rear panel

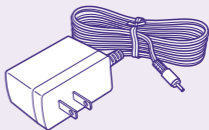
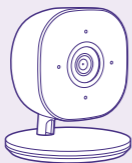


Component	Description
Power Plug	Connect the power adapter here. Never use other adapters
Reset Button	Press for over 10 seconds to restore the factory default settings. Then the system reboots with the default values.
Stand	Used to support the camera on a table or wall.
Mounting Plate	Used to install the camera on a wall after removing from the stand.

Installing the Product

When the product is ready, install it by keeping the following procedure:

- 1 Check the following items are included in the package including this user guide.



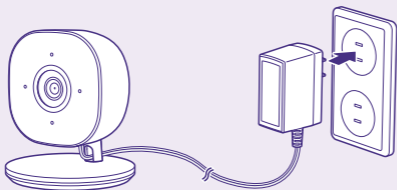
- 2 Determine the location to install the product.

Installing the Product

- 3 Connect the power plug into the camera and then plug the power connector into the outlet to supply power.

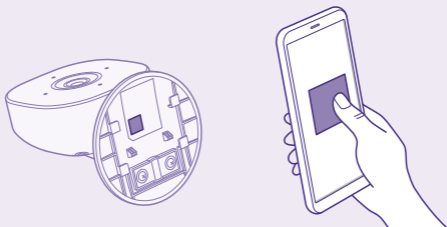


Never use power adapters other than the provided one. It may cause damage to the system.



The status LED blinks (approx. 1 minute) in amber during startup. Then the LED color changes to blue before registration. After wireless connection is finished, its color changes to green.

- 4 Download the SmartThings app for Android or iOS, create an account, and follow on-screen instructions to add the device.
- 5 Use the SmartThings app to scan the QR code at the bottom of the stand and then follow on-screen instructions to finish setup.

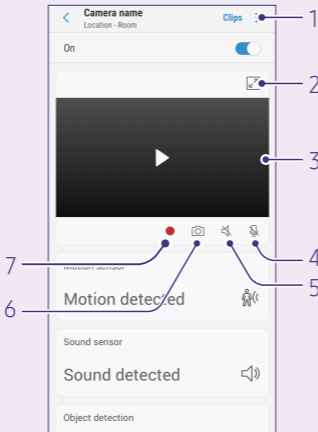


The QR code is located under the mounting plate. When you cannot find the QR code, remove the mounting plate.

Launching the App

When you launch the app after all things are made, the main screen appears on your mobile device.

For monitoring, select the desired site on the screen. Then the following live view screen appears.



No.	Description
1	When clicked, the following menus appear: <ul style="list-style-type: none">• My Info: Moves to the subscription page. You can subscribe to the premium service at Samsung.com.• Edit: Can edit the device information.• Settings: Moves to the camera plug-in settings page.• Information: Displays the app information.
2	Toggles between full live view screen and normal screen.
3	Displays the live view screen.
4	Enables/disables the microphone.
5	Mutes the video sound.
6	Captures video from the screen.
7	Records the live video.

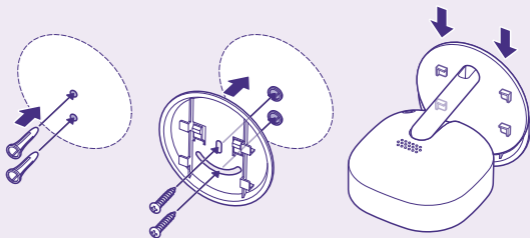
Launching the App

The differentiated subscription plans are provided as follows:

Basic Plan	Premium Plan
Free of charge	\$7.99 per month or \$79.99 per year
Can connect up to 2 SmartThings cameras	Can connect up to 5 SmartThings cameras
Can customize the motion detection zones	Can customize the motion detection zones
Can clip the recording for up to 10 seconds	Can clip the recording for up to 60 seconds
No cloud archiving	Cloud archiving available

Mounting on the Wall

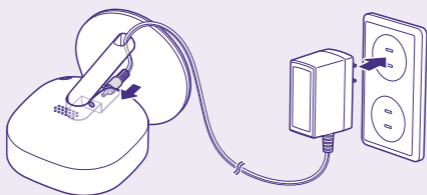
The camera is usually mounted on the wall for permanent installation. In this case, follow the steps below:



- 1** Remove the mounting plate from the stand by sliding it forward from the stand.
- 2** Hold the mounting plate at the desired location and mark the holes for two mounting holes.
- 3** Drill two pilot holes on the mounting surface at the marked location.

Mounting on the Wall

- 4 Align two mounting holes on the camera stand with two pilot holes and then mount the plate on the wall surface with two provided screws.
- 5 Slide the camera stand onto the mounting plate until it clicks in place.
- 6 Insert the power cable into the hole of the stand, connect the cable to the camera, and plug the power adapter into the outlet.



- 7 Adjust the camera for better performance and fix it firmly.

Specifications

Power	Adapter input: 100-240 V AC, 50/60 Hz Adapter output: 12 V DC, 1 A
Color	White
Sensor	½. 7" CMOS sensor
Dimensions (H x W x D)	3.98" x 1.82" x 1.72" (101 mm x 46.3 mm x 43.7 mm)
Operating tempera	32 °F to 104 °F (0 °C to 40°C)
Storage temperature	-4 °F to 158 °F (-20 °C to 70 °C)
Video	Up to 1080p at 30 frames/sec, H.264 encoding
Audio	Bi-directional full-duplex audio, G.711 (built-in microphone & 1W speaker)
Image resolution	1080p (1920 x 1080), 720p (1280 x 720), VGA (640 x 480)

Specifications

Viewing angle	145° diagonal (Dewarping FOV is to be updated later)
Night vision	Built-in IR LEDs for night-time illumination (range within 5 m)
IR LEDs	2
LED type	1 tri-color LED (power/network/status)
Connectivity	Wi-Fi 802.11b/g/n, 2.4 GHz/5 GHz (WPA & WPA2 encryption supported)
Wireless interface	IEEE 802.11ac, 802.11b/g/n
Vision Intelligence	People/sound/obstruction detection at the edge ABR (Adaptive Bit Rate)
Network protocols	TCP/IP, HTTPS, DHCP, NTP, RTP, RTCP, RTSP, DNS

Works with SmartThings

SmartThings works with a wide range of connected devices, including lights, cameras, locks, thermostats, sensors, and more.



To purchase a device to connect to your product, be sure to check the **Works with SmartThings** label.

