

SAR Test Report

Product Name : IEEE802.11g Wireless PC Card

Model No. : CB801AS

Applicant : SerComm Corporation

Address : 8F, No. 3-1, YuanQu St., NanKang, Taipei 115,
Taiwan, R.O.C.

Date of Receipt : 2005/05/20

Issued Date : 2005/05/31

Report No. : 055L140SF

The test results relate only to the samples tested.

The test report shall not be reproduced except in full without the written approval of Quietek Corporation.

Test Report Certification

Issued Date: 2005/05/31

Report No.:055L140SF



Product Name : IEEE802.11g Wireless PC Card
Applicant : SerComm Corporation
Address : 8F, No. 3-1, YuanQu St., NanKang, Taipei 115, Taiwan, R.O.C.
Manufacturer : SerComm Corporation
Model No. : CB801AS
Applicable Standard : FCC Oet65 Supplement C June 2001

Test Result : Max. SAR Measurement (1g)
802.11b: 0.880 W/kg
802.11g: 0.500 W/kg

Application Type : Certification

The test results relate only to the samples tested.

The test report shall not be reproduced except in full without the written approval of Quietek Corporation.

Documented By : Rita Huang
(Rita Haung)

Tested By : Hsiu Ho
(Hsiu Ho)

Approved By : Gene Chang
(Gene Chang)

TABLE OF CONTENTS

Description	Page
1. General Information.....	5
1.1 EUT Description	5
1.2 Test Environment	5
2. SAR Measurement System	6
2.1 ALSAS-10U System Description	6
2.1.1 Applications	6
2.1.2 Area Scans.....	6
2.1.3 Zoom Scan (Cube Scan Averaging).....	7
2.1.4 ALSAS-10U Interpolation and Extrapolation Uncertainty.....	7
2.2 Isotropic E-Field Probe	7
2.2.1 Isotropic E-Field Probe Specification	9
2.3 Boundary Detection Unit and Probe Mounting Device	9
2.4 Daq-Paq (Analog to Digital Electronics).....	10
2.5 Axis Articulated Robot	10
2.6 ALSAS Universal Workstation.....	11
2.7 Universal Device Positioner.....	11
2.8 Phantom Types.....	11
2.8.1 APREL SAM Phantoms	12
2.8.2 APREL Laboratories Universal Phantom	12
3. Tissue Simulating Liquid	13
3.1 The composition of the tissue simulating liquid	13
3.2 Tissue Calibration Result	13
3.3 Tissue Dielectric Parameters for Head and Body Phantoms	14
4. SAR Measurement Procedure	15
4.1 SAR System Validation.....	15
4.1.1 Validation Dipoles.....	15
4.1.2 Validation Result	15
4.2 SAR Measurement Procedure	16
5. SAR Exposure Limits	17
6. Test Equipment List.....	18
7. Measurement Uncertainty	19
8. Test Results	20
8.1 SAR Test Results Summary	20
8.2 SAR System Validation Data	22
8.3 SAR Measurement Data.....	26

Test Setup Photographs	84
EUT Photographs	86
Probe Calibration	87
Dipole Calibration.....	108

1. General Information

1.1 EUT Description

Product Name	IEEE802.11g Wireless PC Card
Model No.	CB801AS
FCC ID	P27CB801AS
TX Frequency	2412MHz ~ 2462MHz
Number of Channel	11
Type of Modulation	DSSS/OFDM
Antenna Type	Internal
Device Category	Portable
RF Exposure Environment	Uncontrolled
Transfer Rate	802.11b: 11Mbps 802.11g: >54Mbps(Turbo mode)
Max. Output Power (Conducted)	802.11b: 15.93dBm 802.11g: 15.97dBm

1.2 Test Environment

Ambient conditions in the laboratory:

Items	Required	Actual
Temperature (°C)	18-25	22.3
Humidity (%RH)	30-70	50

2. SAR Measurement System

2.1 ALSAS-10U System Description

ALSAS-10-U is fully compliant with the technical and scientific requirements of IEEE 1528, IEC 62209, CENELEC, ARIB, ACA, and the Federal Communications Commission. The system comprises of a six axes articulated robot which utilizes a dedicated controller.

ALSAS-10U uses the latest methodologies and FDTD modeling to provide a platform which is repeatable with minimum uncertainty.

2.1.1 Applications

Predefined measurement procedures compliant with the guidelines of CENELEC, IEEE, IEC, FCC, etc are utilized during the assessment for the device. Automatic detection for all SAR

maxima are embedded within the core architecture for the system, ensuring that peak locations used for centering the zoom scan are within a 1mm resolution and a 0.05mm repeatable position. System operation range currently available up-to 6 GHz in simulated tissue.

2.1.2 Area Scans

Area scans are defined prior to the measurement process being executed with a user defined variable spacing between each measurement point (integral) allowing low uncertainty measurements to be conducted. Scans defined for FCC applications utilize a 10mm² step integral, with 1mm interpolation used to locate the peak SAR area used for zoom scan assessments.

Where the system identifies multiple SAR peaks (which are within 25% of peak value) the system will provide the user with the option of assessing each peak location individually for zoom scan averaging.



2.1.3 Zoom Scan (Cube Scan Averaging)

The averaging zoom scan volume utilized in the ALSAS-10U software is in the shape of a cube and the side dimension of a 1 g or 10 g mass is dependent on the density of the liquid representing the simulated tissue. A density of 1000 kg/m³ is used to represent the head and body tissue density and not the phantom liquid density, in order to be consistent with the definition of the liquid dielectric properties, i.e. the side length of the 1 g cube is 10mm, with the side length of the 10 g cube 21,5mm.

When the cube intersects with the surface of the phantom, it is oriented so that 3 vertices touch the surface of the shell or the center of a face is tangent to the surface. The face of the cube closest to the surface is modified in order to conform to the tangent surface.

The zoom scan integer steps can be user defined so as to reduce uncertainty, but normal practice for typical test applications (including FCC) utilize a physical step of 5x5x8 (8mmx8mmx5mm) providing a volume of 32mm in the X & Y axis, and 35mm in the Z axis.

2.1.4 ALSAS-10U Interpolation and Extrapolation Uncertainty

The overall uncertainty for the methodology and algorithms the used during the SAR calculation was evaluated using the data from IEEE 1528 based on the example f3 algorithm:

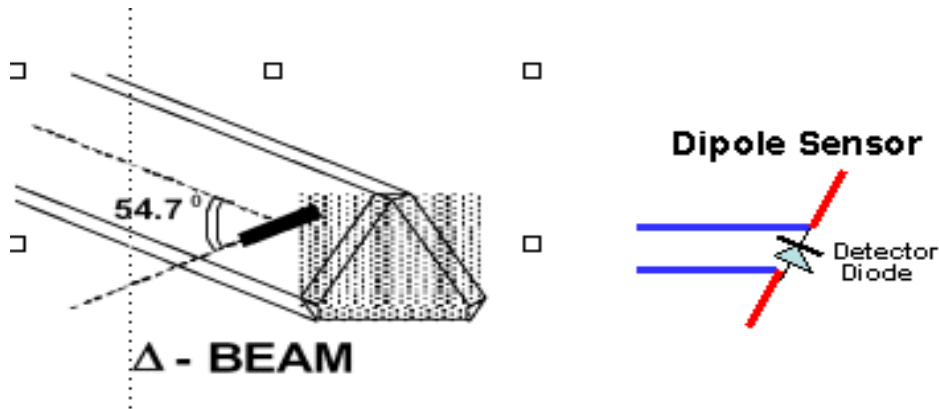
$$f_3(x, y, z) = A \frac{a^2}{\frac{a^2}{4} + x'^2 + y'^2} \cdot \left(e^{-\frac{2z}{a}} + \frac{a^2}{2(a + 2z)^2} \right)$$

2.2 Isotropic E-Field Probe

The isotropic E-Field probe has been fully calibrated and assessed for isotropicity, and boundary effect within a controlled environment. Depending on the frequency for which the probe is calibrated the method utilized for calibration will change. A number of methods is used for calibrating probes, and these are outlined in the table below:

Calibration Frequency	Air Calibration	Tissue Calibration
2450MHz	Waveguide	Temperature

The E-Field probe utilizes a triangular sensor arrangement as detailed in the diagram below:



SAR is assessed with a calibrated probe which moves at a default height of 5mm from the center of the diode, which is mounted to the sensor, to the phantom surface (in the Z Axis). The 5mm offset height has been selected so as to minimize any resultant boundary effect due to the probe being in close proximity to the phantom surface.

The following algorithm is an example of the function used by the system for linearization of the output from the probe when measuring complex modulation schemes.

$$V_i = U_i + U_i^2 \cdot \frac{cf}{dcp_i}$$

2.2.1 Isotropic E-Field Probe Specification

Calibration in Air	Frequency Dependent Below 2GHz Calibration in air performed in a TEM Cell Above 2GHz Calibration in air performed in waveguide
Sensitivity	0.70 $\mu\text{V}/(\text{V}/\text{m})^2$ to 0.85 $\mu\text{V}/(\text{V}/\text{m})^2$
Dynamic Range	0.0005 W/kg to 100W/kg
Isotropic Response	Better than 0.2dB
Diode Compression point (DCP)	Calibration for Specific Frequency
Probe Tip Radius	< 5mm
Sensor Offset	1.56 (+/- 0.02mm)
Probe Length	290mm
Video Bandwidth	@ 500 Hz: 1dB @1.02 KHz: 3dB
Boundary Effect	Less than 2% for distance greater than 2.4mm
Spatial Resolution	Diameter less than 5mm Compliant with Standards

2.3 Boundary Detection Unit and Probe Mounting Device

ALSAS-10U incorporates a boundary detection unit with a sensitivity of 0.05mm for detecting all types of surfaces. The robust design allows for detection during probe tilt (probe normalize) exercises, and utilizes a second stage emergency stop. The signal electronics are fed directly into the robot controller for high accuracy surface detection in lateral and axial detection modes (X, Y, & Z).

The probe is mounted directly onto the Boundary Detection unit for accurate tooling and displacement calculations controlled by the robot kinematics. The probe is connect to an isolated probe interconnect where the output stage of the probe is fed directly into the amplifier stage of the Daq-Paq

2.4 Daq-Paq (Analog to Digital Electronics)

ALSAS-10U incorporates a fully calibrated Daq-Paq (analog to digital conversion system) which has a 4 channel input stage, sent via a 2 stage auto-set amplifier module. The input signal is amplified accordingly so as to offer a dynamic range from 5µV to 800mV. Integration of the fields measured is carried out at board level utilizing a Co-Processor which then sends the measured fields down into the main computational module in digitized form via an RS232 communications port. Probe linearity and duty cycle compensation is carried out within the main Daq-Paq module.

ADC	12 Bit
Amplifier Range	20mV to 200mV and 150mV to 800mV
Field Integration	Local Co-Processor utilizing proprietary integration algorithms
Number of Input Channels	4 in total 3 dedicated and 1 spare
Communication	Packet data via RS232

2.5 Axis Articulated Robot



ALSAS-10U utilizes a six axis articulated robot, which is controlled using a Pentium based real-time movement controller. The movement kinematics engine utilizes proprietary (Thermo CRS) interpolation and extrapolation algorithms, which allow full freedom of movement for each of the six joints within the working envelope. Utilization of joint 6 allows for full probe rotation with a tolerance better than 0.05mm around the central axis.

Robot/Controller Manufacturer	Thermo CRS
Number of Axis	Six independently controlled axis
Positioning Repeatability	0.05mm
Controller Type	Single phase Pentium based C500C
Robot Reach	710mm
Communication	RS232 and LAN compatible

2.6 ALSAS Universal Workstation

ALSAS Universal workstation allows for repeatability and fast adaptability. It allows users to do calibration, testing and measurements using different types of phantoms with one set up, which significantly speeds up the measurement process.

2.7 Universal Device Positioner

The universal device positioner allow complete freedom of movement of the EUT. Developed to hold a EUT in a free-space scenario any additional loading attributable to the material used in the construction of the positioner has been eliminated. Repeatability has been enhanced through the linear scales which form the design used to indicate positioning for any given test scenario in all major axes. A 15° tilt indicator is included for the of aid cheek to tilt movements for head SAR analysis. Overall uncertainty for measurements have been reduced due to the design of the Universal device positioner, which allows positioning of a device in as near to a free-space scenario as possible, and by providing the means for complete repeatability.

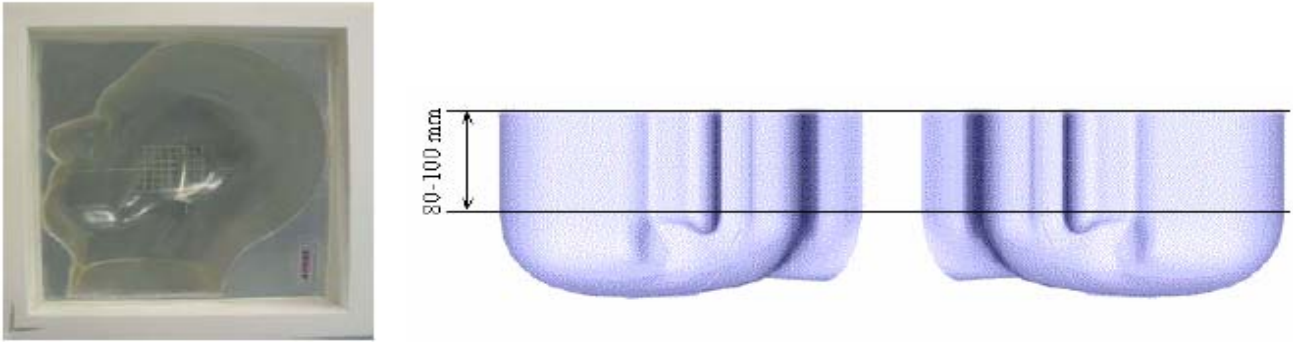


2.8 Phantom Types

The ALSAS-10U allows the integration of multiple phantom types. SAM Phantoms fully compliant with IEEE 1528, Universal Phantom, and Universal Flat.

2.8.1 APREL SAM Phantoms

The SAM phantoms developed using the IEEE SAM CAD file. They are fully compliant with the requirements for both IEEE 1528 and FCC Supplement C. Both the left and right SAM phantoms are interchangeable, transparent and include the IEEE 1528 grid with visible NF and MB lines.



2.8.2 APREL Laboratories Universal Phantom

The Universal Phantom is used on the ALSAS-10U as a system validation phantom. The Universal Phantom has been fully validated both experimentally from 800MHz to 6GHz and numerically using XFDTD numerical software. The shell thickness is 2mm overall, with a 4mm spacer located at the NF/MB intersection providing an overall thickness of 6mm in line with the requirements of IEEE-1528.



The design allows for fast and accurate measurements, of handsets, by allowing the conservative SAR to be evaluated at on frequency for both left and right head experiments in one measurement.

3. Tissue Simulating Liquid

3.1 The composition of the tissue simulating liquid

INGREDIENT (% Weight)	900MHz Head	1800MHz Head	2450MHz Head	2450MHz Body
Water	--	--	46.7	73.2
Salt	--	--	0.00	0.04
Sugar	--	--	0.00	0.00
HEC	--	--	0.00	0.00
Preventol	--	--	0.00	0.00
DGBE	--	--	53.3	26.7

3.2 Tissue Calibration Result

The dielectric parameters of the liquids were verified prior to the SAR evaluation using APREL Dielectric Probe Kit and Anritsu MS4623B Vector Network Analyzer

Head Tissue Simulant Measurement				
Frequency [MHz]	Description	Dielectric Parameters		Tissue Temp. [°C]
		ϵ_r	σ [s/m]	
2450MHz	Reference result ± 5% window	39.2 37.24 to 41.16	1.8 1.71 to 1.89	N/A
	27-May-05	38.5	1.74	21.5

Body Tissue Simulant Measurement				
Frequency [MHz]	Description	Dielectric Parameters		Tissue Temp. [°C]
		ϵ_r	σ [s/m]	
2450MHz	Reference result ± 5% window	52.7 50.065 to 55.335	1.95 1.8525 to 2.0475	N/A
	27-May-05	51.62	1.91	21.5
2412 MHz	Low channel	50.80	1.88	21.5
2437 MHz	Mid channel	50.95	1.89	21.5
2462 MHz	High channel	51.87	1.93	21.5

3.3 Tissue Dielectric Parameters for Head and Body Phantoms

The head tissue dielectric parameters recommended by the IEEE SCC-34/SC-2 in P1528 have been incorporated in the following table. These head parameters are derived from planar layer models simulating the highest expected SAR for the dielectric properties and tissue thickness variations in a human head. Other head and body tissue parameters that have not been specified in P1528 are derived from the tissue dielectric parameters computed from the 4-Cole-Cole equations described in Reference [12] and extrapolated according to the head parameters specified in P1528.

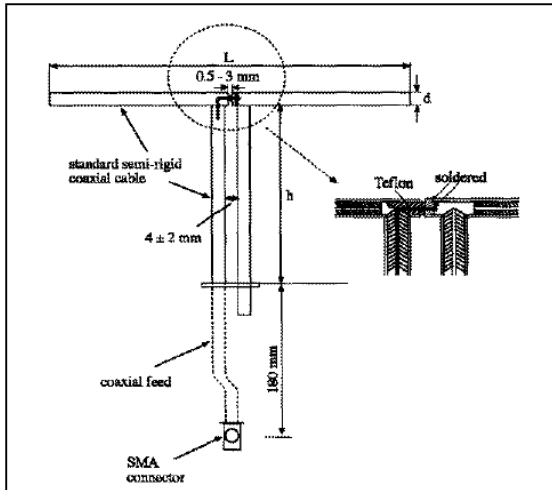
Target Frequency (MHz)	Head		Body	
	ϵ_r	σ (S/m)	ϵ_r	σ (S/m)
150	52.3	0.76	61.9	0.80
300	45.3	0.87	58.2	0.92
450	43.5	0.87	56.7	0.94
835	41.5	0.90	55.2	0.97
900	41.5	0.97	55.0	1.05
915	41.5	0.98	55.0	1.06
1450	40.5	1.20	54.0	1.30
1610	40.3	1.29	53.8	1.40
1800 – 2000	40.0	1.40	53.3	1.52
2450	39.2	1.80	52.7	1.95
3000	38.5	2.40	52.0	2.73
5800	35.3	5.27	48.2	6.00

(ϵ_r = relative permittivity, σ = conductivity and $\rho = 1000 \text{ kg/m}^3$)

4. SAR Measurement Procedure

4.1 SAR System Validation

4.1.1 Validation Dipoles



The dipoles used is based on the IEEE-1528 standard, and is complied with mechanical and electrical specifications in line with the requirements of both IEEE and FCC Supplement C. the table below provides details for the mechanical and electrical specifications for the dipoles.

Frequency	L (mm)	h (mm)	d (mm)
2450MHz	53.5	30.4	3.6

4.1.2 Validation Result

System Performance Check at 2450MHz				
Validation Kit: ASL-D-2450-S-2				
Frequency [MHz]	Description	SAR [w/kg] 1g	SAR [w/kg] 10g	Tissue Temp. [°C]
2450 MHz	Reference result ± 5% window	52.4 49.78 to 55.02	24 22.8 to 25.2	N/A
	27-May-05	54.091	24.362	21.5

Note: All SAR values are 1W forward power.

4.2 SAR Measurement Procedure

The ALSAS-10U calculates SAR using the following equation,

$$SAR = \frac{\sigma |E|^2}{\rho}$$

σ : represents the simulated tissue conductivity

ρ : represents the tissue density

The EUT is set to transmit at the required power in line with product specification, at each frequency relating to the LOW, MID, and HIGH channel settings.

Pre-scans are made on the device to establish the location for the transmitting antenna, using a large area scan in either air or tissue simulation fluid.

The EUT is placed against the Universal Phantom where the maximum area scan dimensions are larger than the physical size of the resonating antenna. When the scan size is not large enough to cover the peak SAR distribution, it is modified by either extending the area scan size in both the X and Y directions, or the device is shifted within the predefined area.

The area scan is then run to establish the peak SAR location (interpolated resolution set at 1mm^2) which is then used to orient the center of the zoom scan. The zoom scan is then executed and the 1g and 10g averages are derived from the zoom scan volume (interpolated resolution set at 1mm^3).

5. SAR Exposure Limits

SAR assessments have been made in line with the requirements of IEEE-1528, FCC Supplement C, and comply with ANSI/IEEE C95.1-1992 “Uncontrolled Environments” limits. These limits apply to a location which is deemed as “Uncontrolled Environment” which can be described as a situation where the general public may be exposed to an RF source with no prior knowledge or control over their exposure.

Limits for General Population/Uncontrolled Exposure (W/kg)

Type Exposure	Uncontrolled Environment Limit
Spatial Peak SAR (1g cube tissue for brain or body)	1.60 W/kg
Spatial Average SAR (whole body)	0.08 W/kg
Spatial Peak SAR (10g for hands, feet, ankles and wrist)	4.00 W/kg

6. Test Equipment List

Instrument	Manufacturer	Model No.	Serial No.	Last Calibration
Data Acquisition Package	Apral	ALS-DAQ-PAQ-2	QTK-337	Nov. 2004
Apral Laboratories Probe	Apral	ALS-E020	264	Mar. 2005
Apral Laboratories Probe	Apral	ALS-E020	265	Mar. 2005
Apral Reference Dipole 2450Mhz	Apral	ALS-D-2450-S-2	QTK-319	Jun. 2004
Boundary Detection Sensor System	Apral	ALS-PMDPS-2	QTK-336	N/A
Dielectric Probe Kit	Apral	ALS-PR-DIEL	QTK-296	N/A
Universal Work Station	Apral	ALS-UWS	QTK-326	N/A
Device Holder 2.0	Apral	ALS-H-E-SET-2	QTK-294	N/A
Left Ear SAM Phantom	Apral	ALS-P-SAM-L	QTK-292	N/A
Right Ear SAM Phantom	Apral	ALS-P-SAM-R	QTK-288	N/A
Universal Phantom	Apral	ALS-P-UP-1	QTK-246	N/A
Apral Dipole Spacer	Apral	ALS-DS-U	QTK-295	N/A
SAR Software	Apral	ALSAS-10	Ver. 2.0.0	N/A
CRS C500C Controller	Thermo	ALS-C500	RCF0404433	N/A
CRF F3 Robot	Thermo	ALS-F3	RAF0412222	N/A
Power Amplifier	Mini-Circuit	ZHL-42	D051404-20	N/A
Directional Coupler	Agilent	778D-012	50550	N/A
Universal Radio Communication Tester	Rohde & Schwarz	CMU 200	104846	Mar. 2005
Radio Communication Analyzer	Anritsu	MT8820A	6200323183	Jun. 2004
Vector Network	Anritsu	MS4623B	992801	Mar 2005
Signal Generator	Anritsu	MG3692A	042319	Jun. 2004
Power Meter	Anritsu	ML2487A	6K00001447	Jan. 2005
Wide Bandwidth Sensor	Anritsu	MA2491	030677	Jan. 2005

Note: All equipment upon which need to be calibrated are with calibration period of 1 year.

7. Measurement Uncertainty

Exposure Assessment Measurement Uncertainty

Source of Uncertainty	Tolerance Value	Probability Distribution	Divisor	c_1^{-1} (1-g)	c_1^{-1} (10-g)	Standard Uncertainty (1-g) %	Standard Uncertainty (10-g) %
Measurement System							
Probe Calibration	3.5	normal	1	1	1	3.5	3.5
Axial Isotropy	3.7	rectangular	$\sqrt{3}$	$(1-cp)^{1/3}$	$(1-cp)^{1/3}$	1.5	1.5
Hemispherical Isotropy	10.9	rectangular	$\sqrt{3}$	\sqrt{cp}	\sqrt{cp}	4.4	4.4
Boundary Effect	2.0	rectangular	$\sqrt{3}$	1	1	0.6	0.6
Linearity	4.7	rectangular	$\sqrt{3}$	1	1	2.7	2.7
Detection Limit	1.0	rectangular	$\sqrt{3}$	1	1	0.6	0.6
Readout Electronics	1.0	normal	1	1	1	1.0	1.0
Response Time	0.8	rectangular	$\sqrt{3}$	1	1	0.5	0.5
Integration Time	1.7	rectangular	$\sqrt{3}$	1	1	1.0	1.0
RF Ambient Condition	3.0	rectangular	$\sqrt{3}$	1	1	1.7	1.7
Probe Positioner Mech.	0.4	rectangular	$\sqrt{3}$	1	1	0.2	0.2
Restriction							
Probe Positioning with respect to Phantom Shell	2.9	rectangular	$\sqrt{3}$	1	1	1.7	1.7
Extrapolation and Integration	3.7	rectangular	$\sqrt{3}$	1	1	2.1	2.1
Test Sample Positioning	4.0	normal	1	1	1	4.0	4.0
Device Holder Uncertainty	2.0	normal	1	1	1	2.0	2.0
Drift of Output Power	5.0	rectangular	$\sqrt{3}$	1	1	0.0	0.0
Phantom and Setup							
Phantom Uncertainty(shape & thickness tolerance)	3.4	rectangular	$\sqrt{3}$	1	1	2.0	2.0
Liquid Conductivity(target)	5.0	rectangular	$\sqrt{3}$	0.7	0.5	2.0	1.4
Liquid Conductivity(meas.)	0.1	rectangular	$\sqrt{3}$	0.7	0.5	0.0	0.0
Liquid Permittivity(target)	2.0	rectangular	$\sqrt{3}$	0.6	0.5	0.7	0.6
Liquid Permittivity(meas.)	4.2	rectangular	$\sqrt{3}$	0.6	0.5	1.4	1.2
Combined Uncertainty		RSS				9.2	9.1
Combined Uncertainty (coverage factor=2)		Normal (k=2)				18.4	18.1

8. Test Results

8.1 SAR Test Results Summary

SAR MEASUREMENT						
Ambient Temperature (°C) : 22.3±2				Relative Humidity (%) : 50		
Liquid Temperature (°C) : 21.5±2				Depth of Liquid (cm):>15		
Product: IEEE802.11g Wireless PC Card						
Test Mode: 802.11b						
Test Position Body	Antenna Position	Frequency		Conducted Power (dBm)	SAR 1g (W/kg)	Limit (W/kg)
		Channel	MHz			
Back	Internal	1	2412	15.93	0.880	1.6
Back	Internal	6	2437	15.78	0.780	1.6
Back	Internal	11	2462	15.18	0.827	1.6
Front	Internal	1	2412	15.93	0.284	1.6
Front	Internal	6	2437	15.78	0.200	1.6
Front	Internal	11	2462	15.18	0.108	1.6
Top	Internal	1	2412	15.93	0.626	1.6
Top	Internal	6	2437	15.78	0.570	1.6
Top	Internal	11	2462	15.18	0.454	1.6

SAR MEASUREMENT						
Ambient Temperature (°C) : 22.3±2				Relative Humidity (%):50		
Liquid Temperature (°C) : 21.5±2				Depth of Liquid (cm):>15		
Product: IEEE802.11g Wireless PC Card						
Test Mode: 802.11g						
Test Position	Antenna Position	Frequency		Conducted Power (dBm)	SAR 1g (W/kg)	Limit (W/kg)
		Channel	MHz			
Back	Internal	1	2412	15.81	0.500	1.6
Back	Internal	6	2437	15.97	0.405	1.6
Back	Internal	11	2462	15.11	0.348	1.6
Front	Internal	1	2412	15.81	0.100	1.6
Front	Internal	6	2437	15.97	0.087	1.6
Front	Internal	11	2462	15.11	0.113	1.6
Top	Internal	1	2412	15.81	0.350	1.6
Top	Internal	6	2437	15.97	0.320	1.6
Top	Internal	11	2462	15.11	0.270	1.6

8.2 SAR System Validation Data

ALSAS-10U VER 1.5.14APREL Laboratories

SAR Test Report

Operator : Quietek
Validation Date : 27-May-2005
Measurement Date : 27-May-2005

Product Data

Device Name : Dipole-2450
Frequency : 2450.00 MHz
Max. Transmit Pwr : 1 W
Drift Time : 0 min(s)
Length : 51.5mm
Width : 3.6mm
Depth : 30.4mm
Antenna Type : Internal
Power Start : 30.035mv
Power Finish : 29.014mv
Power Drift (%) : -3.399

Phantom Data

Type : Uni-Phantom
Size : 280mm x 280mm x 200mm
Location : Center

Tissue Data

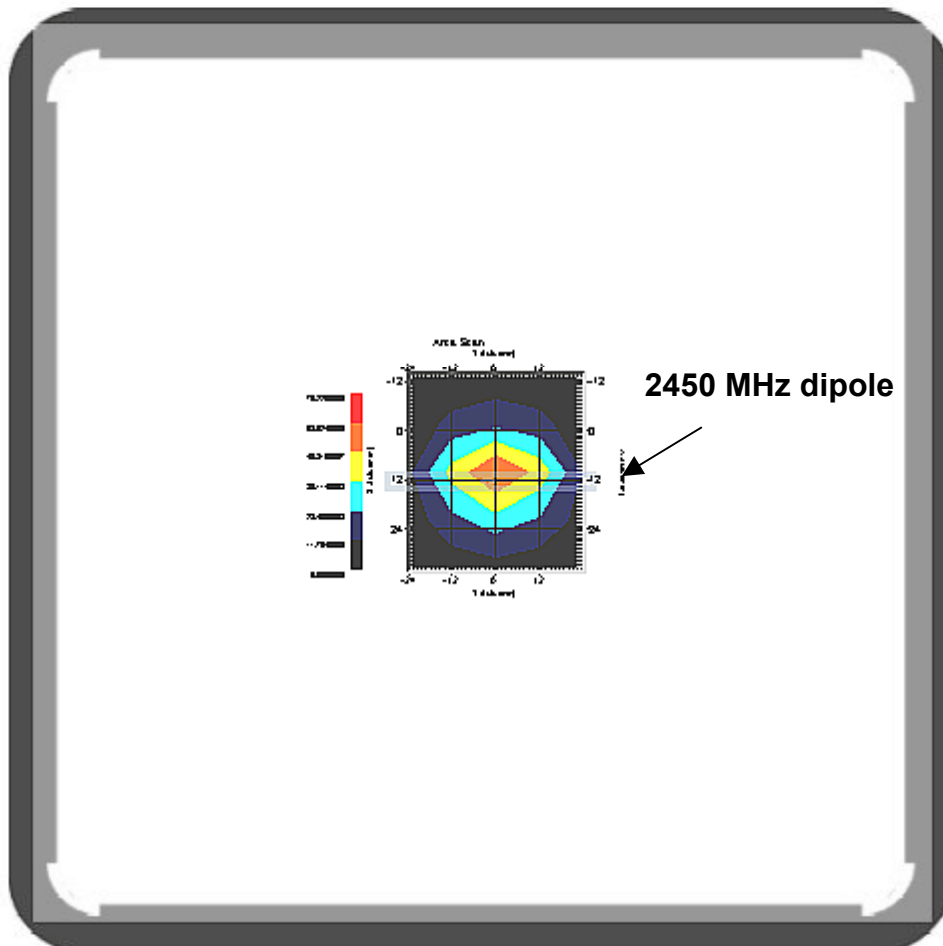
Type : HEAD
Serial No. : 325-H
Frequency : 2450 MHz
Last Calibration Date : 27-May-2005
Temperature : 21.5 °C
Ambient Temp. : 22.3 °C
Humidity : 50 RH%
Epsilon : 38.5 F/m
Sigma : 1.74 S/m
Density : 1000 kg/cu. m

Probe Data

Model : E020
Type : E-Field Triangle
Serial No. : 265
Last Calibration Date : 23-Mar-2005
Frequency : 2450 MHz
Duty Cycle Factor: 1
Conversion Factor: 4.6
Probe Sensitivity: 1.20 1.20 1.20 $\mu\text{V}/(\text{V}/\text{sq. m})$
Compression Point: 95 mV
Offset : 1.56

Measurement Data

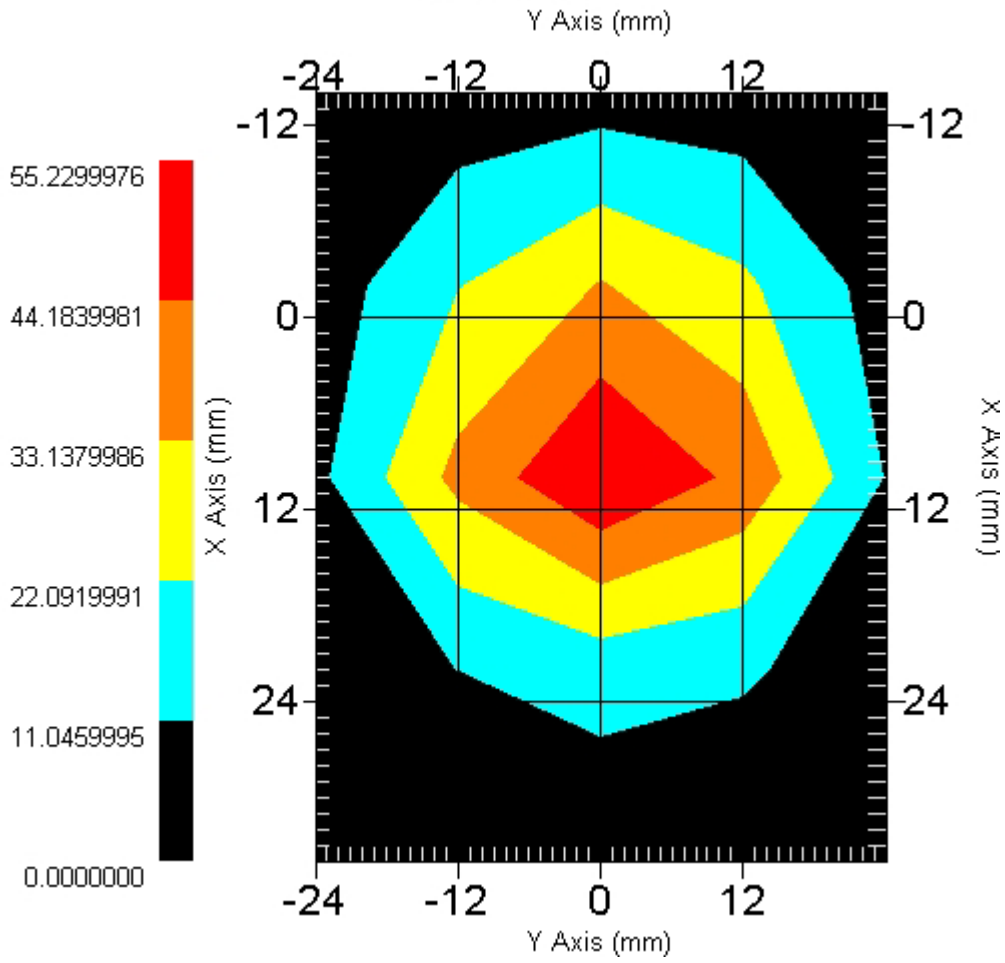
Crest Factor : 1
Channel : 2450



1 gram SAR value : 54.091 W/kg
10 gram SAR value : 24.362 W/kg
Area Scan Peak SAR : 58.530
Zoom Scan Peak SAR : 112.980

This is previous page plot (zoom in)

Area Scan



8.3 SAR Measurement Data

ALSAS-10U VER 2.0.0APREL Laboratories

SAR Test Report

Validation Date : 27-May-2005

Measurement Date : 27-May-2005

Product Data

Device Name : PCMCIA CARD
Model : CB801AS
Frequency : 2450.00 MHz
Drift Time : 0 min(s)
Length : 118.5 mm
Width : 54.3 mm
Depth : 6 mm
Antenna Type : Internal
Power Drift-Start : 0.514mv
Power Drift-Finish: 0.525mv
Power Drift (%) : 2.039

Phantom Data

Type : Uni-Phantom
Size : 280mm x 280mm x 200mm
Location : Center

Tissue Data

Type : BODY
Serial No. : 325-B
Frequency : 2450 MHz
Last Calibration Date : 27-May-2004
Temperature : 21.5 °C
Ambient Temp. : 22.3 °C
Humidity : 50 RH%
Epsilon : 51.62 F/m
Sigma : 1.91 S/m
Density : 1000 kg/cu. m

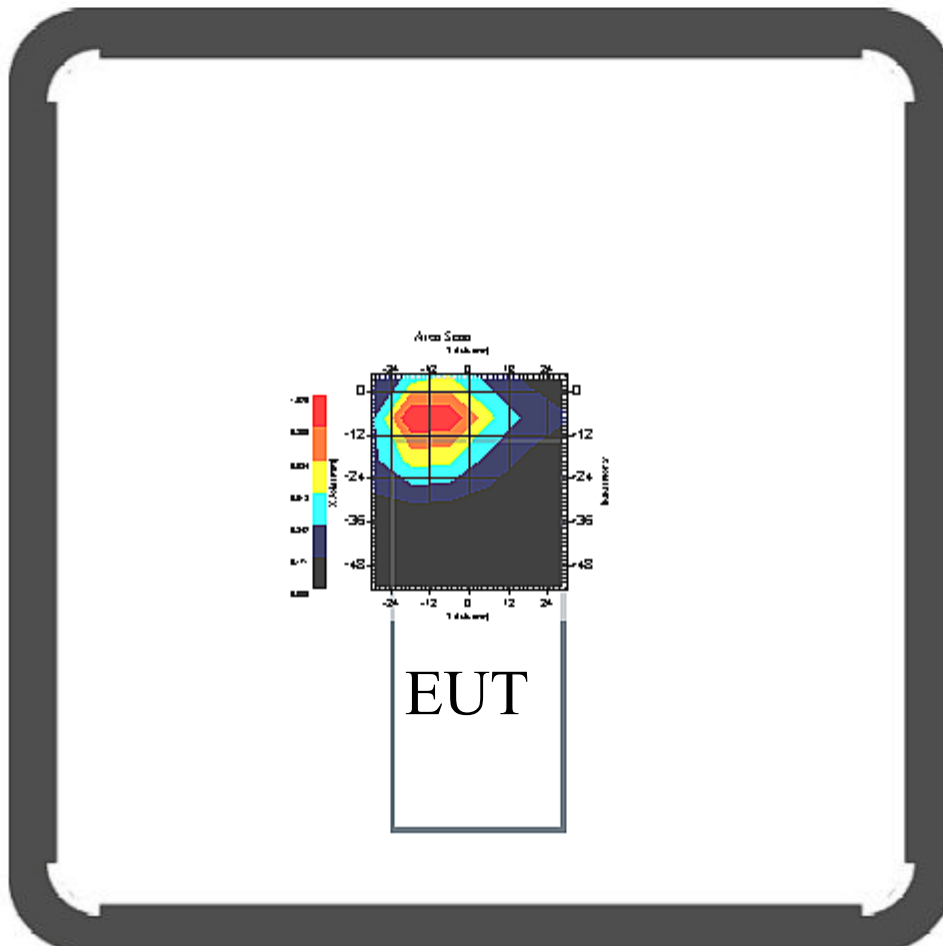
Probe Data

Name : Probe 265
Model : E020
Type : E-Field Triangle
Serial No. : 265
Last Calibration Date : 23-Mar-2005
Frequency : 2450 MHz
Duty Cycle Factor: 1
Conversion Factor: 4.7
Probe Sensitivity: 1.20 1.20 1.20 $\mu\text{V}/(\text{V}/\text{m})^2$
Compression Point: 95 mV
Offset : 1.56mm

Measurement Data

Crest Factor : 1

Channel : 2412



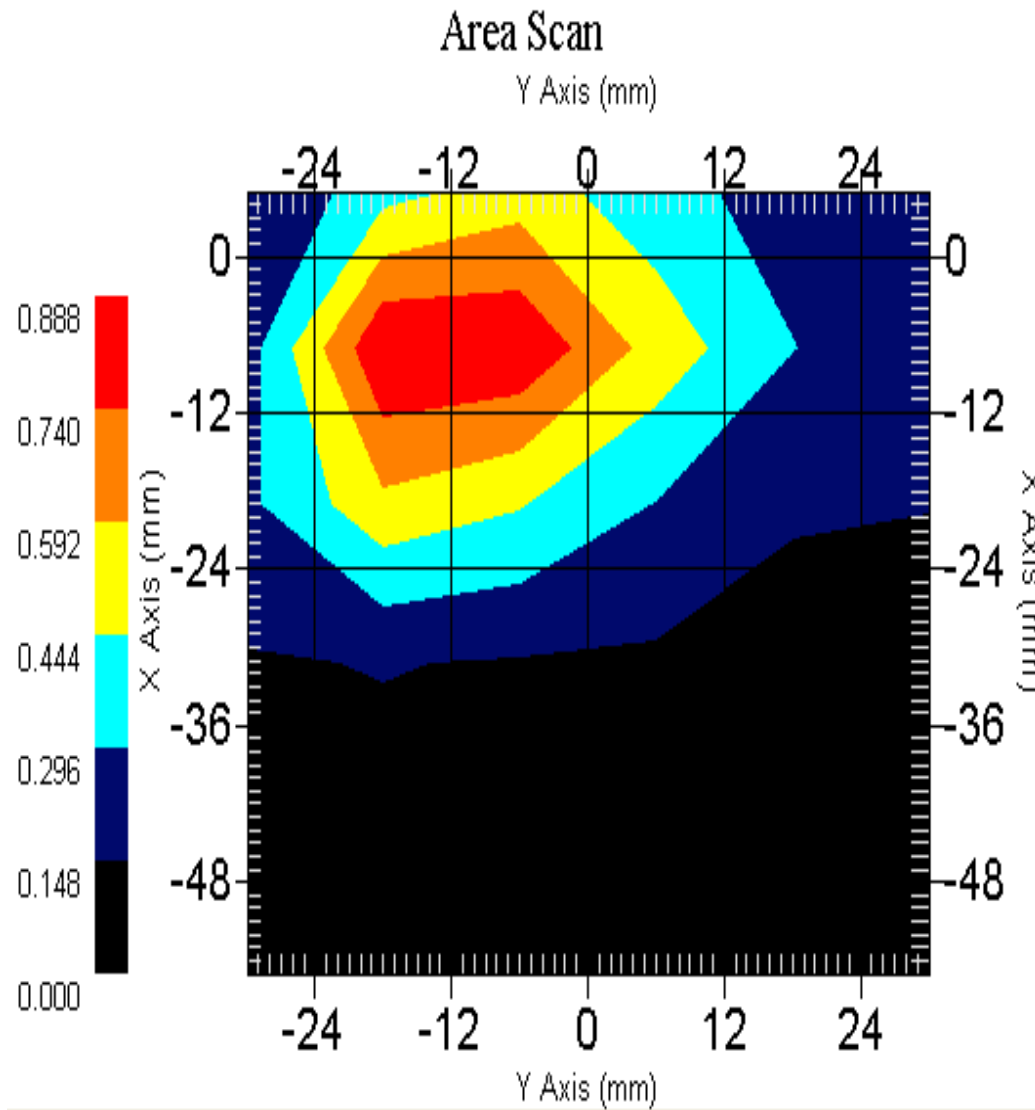
1 gram SAR value : 0.880 W/kg

10 gram SAR value : 0.435 W/kg

Area Scan Peak SAR : 1.022

Zoom Scan Peak SAR : 1.721

This is previous page plot (zoom in)



ALSAS-10U VER 2.0.0APREL Laboratories

SAR Test Report

Validation Date : 27-May-2005

Measurement Date : 27-May-2005

Product Data

Device Name : PCMCIA CARD
 Model : CB801AS
 Frequency : 2450.00 MHz
 Drift Time : 0 min(s)
 Length : 118.5 mm
 Width : 54.3 mm
 Depth : 6 mm
 Antenna Type : Internal
 Power Drift-Start : 0.492mv
 Power Drift-Finish: 0.472mv
 Power Drift (%) : -4.133

Phantom Data

Type : Uni-Phantom
 Size : 280mm x 280mm x 200mm
 Location : Center

Tissue Data

Type : BODY
 Serial No. : 325-B
 Frequency : 2450 MHz
 Last Calibration Date : 27-May-2004
 Temperature : 21.5 °C
 Ambient Temp. : 22.3 °C
 Humidity : 50 RH%
 Epsilon : 51.62 F/m
 Sigma : 1.91 S/m
 Density : 1000 kg/cu. m

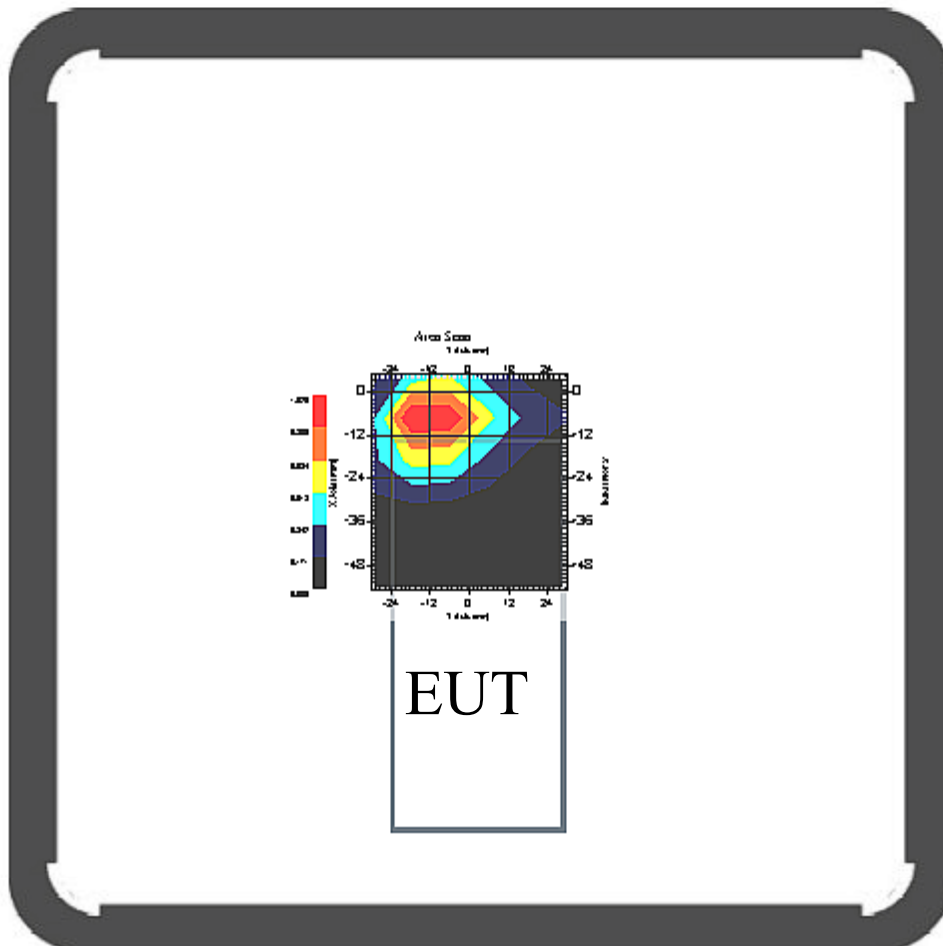
Probe Data

Model : E020
 Type : E-Field Triangle
 Serial No. : 265
 Last Calibration Date : 23-Mar-2005
 Frequency : 2450 MHz
 Duty Cycle Factor: 1
 Conversion Factor: 4.7
 Probe Sensitivity: 1.20 1.20 1.20 $\mu\text{V}/(\text{V}/\text{m})^2$
 Compression Point: 95 mV
 Offset : 1.56mm

Measurement Data

Crest Factor : 1

Channel : 2437



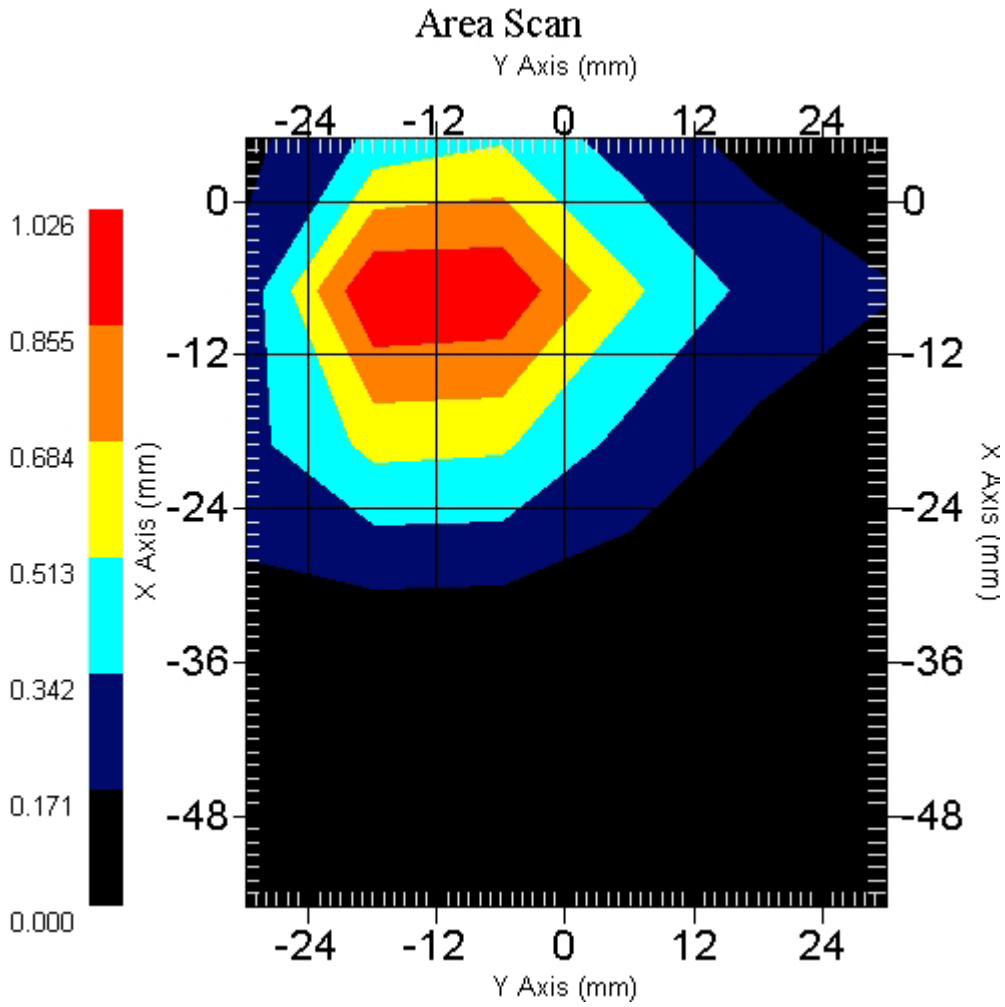
1 gram SAR value : 0.780 W/kg

10 gram SAR value : 0.394 W/kg

Area Scan Peak SAR : 0.879

Zoom Scan Peak SAR : 1.531

This is previous page plot (zoom in)



ALSAS-10U VER 2.0.0APREL Laboratories

SAR Test Report

Validation Date : 27-May-2005

Measurement Date : 27-May-2005

Product Data

Device Name : PCMCIA CARD
Model : CB801AS
Frequency : 2450.00 MHz
Drift Time : 0 min(s)
Length : 118.5 mm
Width : 54.3 mm
Depth : 6 mm
Antenna Type : Internal
Power Drift-Start : 0.427mv
Power Drift-Finish: 0.445mv
Power Drift (%) : 4.382

Phantom Data

Type : Uni-Phantom
Size : 280mm x 280mm x 200mm
Location : Center

Tissue Data

Type : BODY
Serial No. : 325-B
Frequency : 2450 MHz
Last Calibration Date : 27-May-2004
Temperature : 21.5 °C
Ambient Temp. : 22.3 °C
Humidity : 50 RH%
Epsilon : 51.62 F/m
Sigma : 1.91 S/m
Density : 1000 kg/cu. m

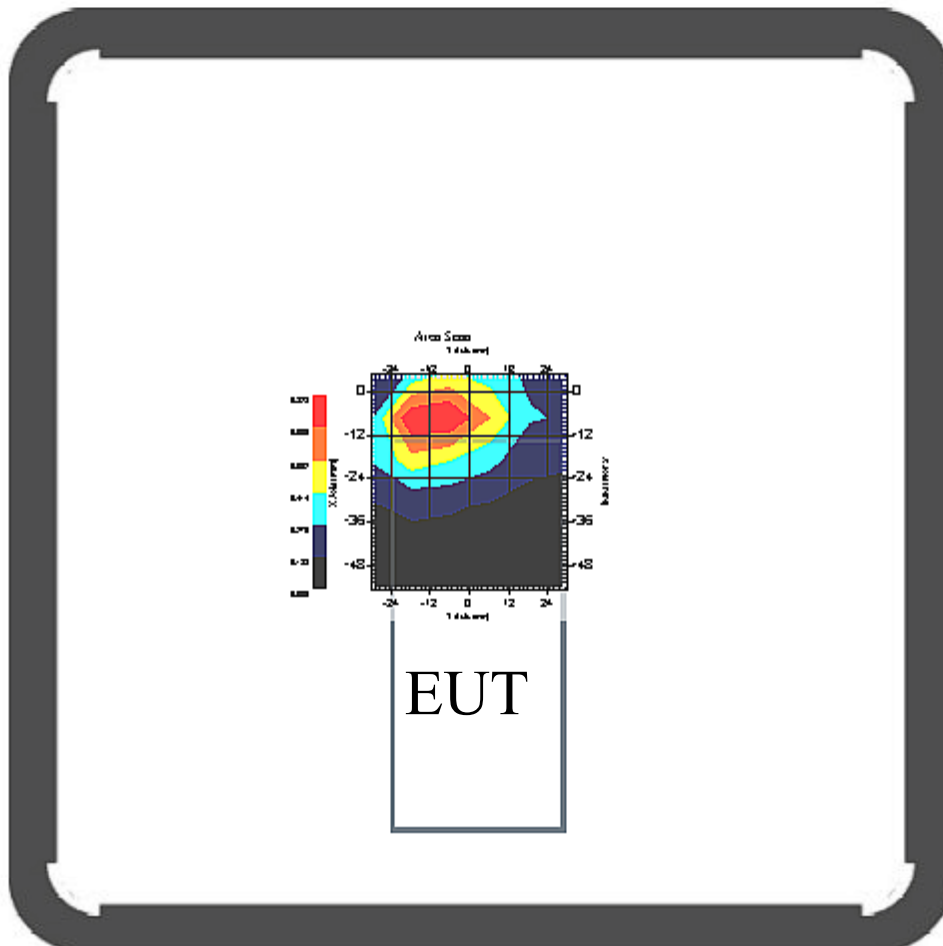
Probe Data

Model : E020
Type : E-Field Triangle
Serial No. : 265
Last Calibration Date : 23-Mar-2005
Frequency : 2450 MHz
Duty Cycle Factor: 1
Conversion Factor: 4.7
Probe Sensitivity: 1.20 1.20 1.20 $\mu\text{V}/(\text{V}/\text{m})^2$
Compression Point: 95 mV
Offset : 1.56mm

Measurement Data

Crest Factor : 1

Channel : 2462



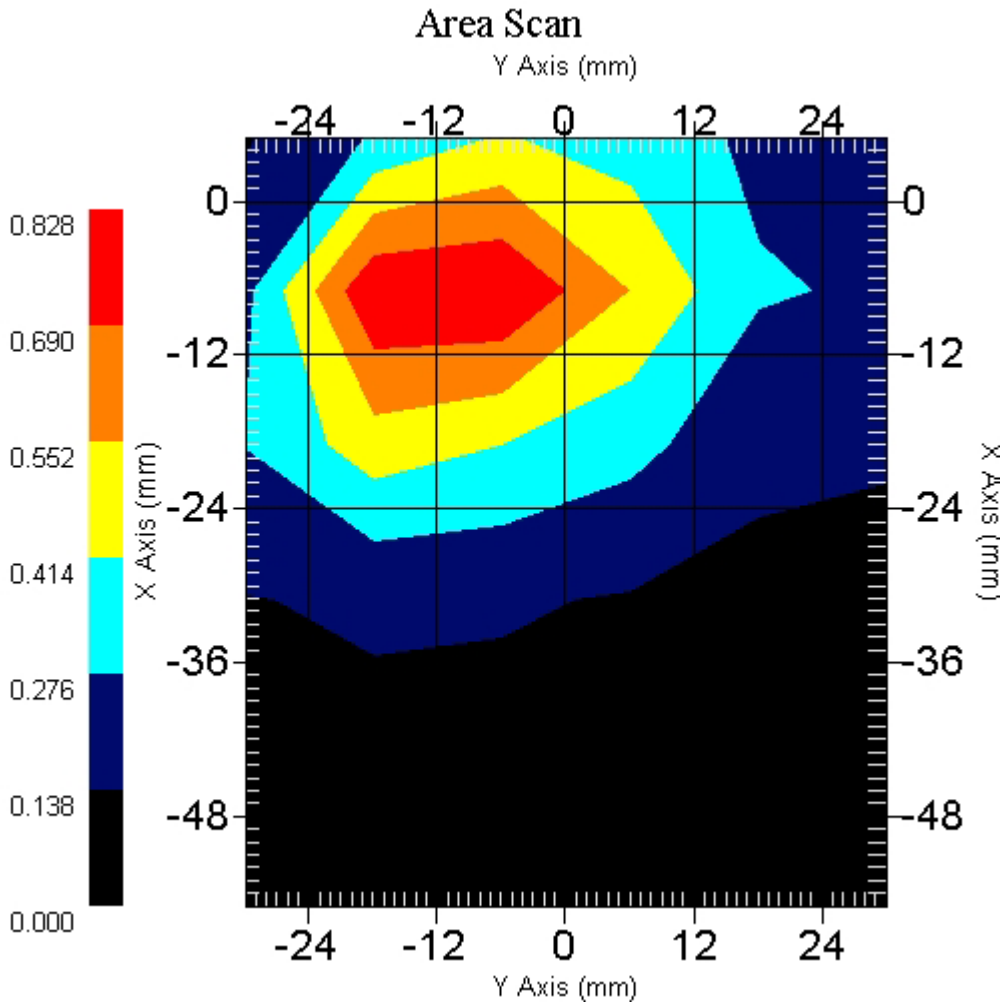
1 gram SAR value : 0.827 W/kg

10 gram SAR value : 0.456 W/kg

Area Scan Peak SAR : 0.823

Zoom Scan Peak SAR : 1.481

This is previous page plot (zoom in)



ALSAS-10U VER 2.0.0APREL Laboratories

SAR Test Report

Validation Date : 27-May-2005

Measurement Date : 27-May-2005

Product Data

Device Name : PCMCIA CARD
Model : CB801AS
Frequency : 2450.00 MHz
Drift Time : 0 min(s)
Length : 118.5 mm
Width : 54.3 mm
Depth : 6 mm
Antenna Type : Internal
Power Drift-Start : 0.285mv
Power Drift-Finish: 0.281mv
Power Drift (%) : -1.4013

Phantom Data

Name : APREL-Uni
Size : 280mm x 280mm x 200mm
Location : Center

Tissue Data

Type : BODY
Serial No. : 325-B
Frequency : 2450 MHz
Last Calibration Date : 27-May-2004
Temperature : 21.5 °C
Ambient Temp. : 22.3 °C
Humidity : 50 RH%
Epsilon : 51.62 F/m
Sigma : 1.91 S/m
Density : 1000 kg/cu. m

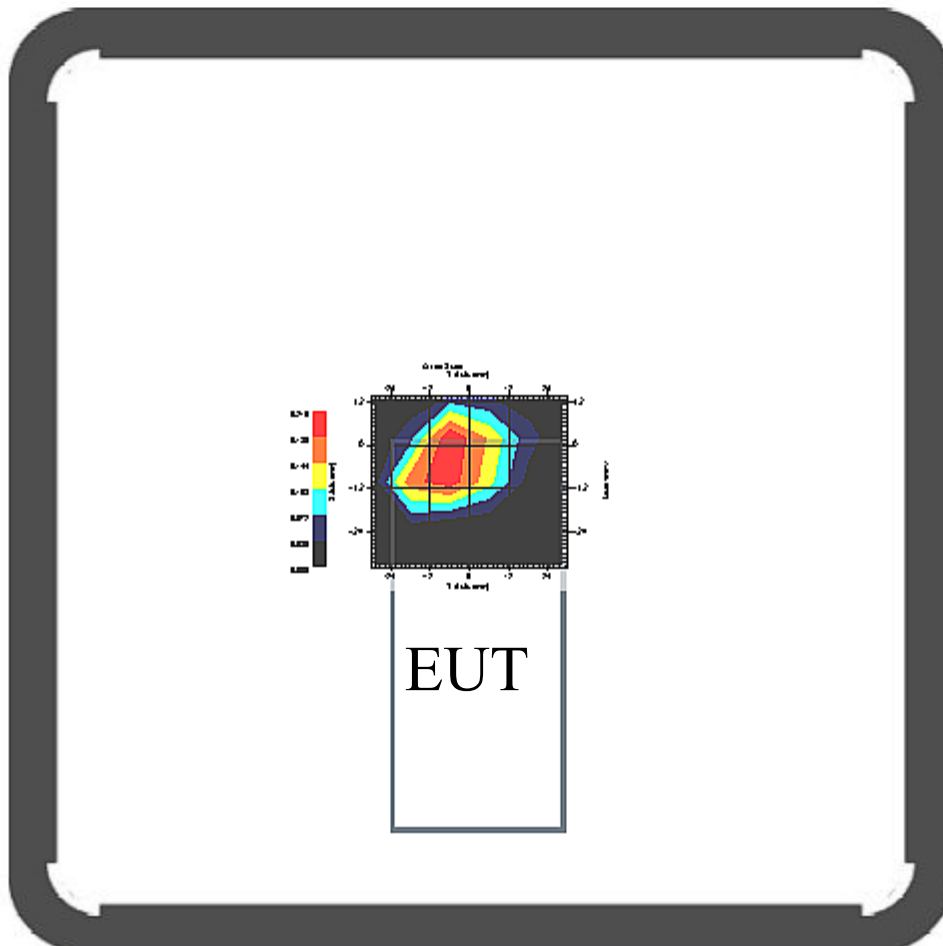
Probe Data

Model : E020
Type : E-Field Triangle
Serial No. : 265
Last Calibration Date : 23-Mar-2005
Frequency : 2450 MHz
Duty Cycle Factor: 1
Conversion Factor: 4.7
Probe Sensitivity: 1.20 1.20 1.20 $\mu\text{V}/(\text{V}/\text{m})^2$
Compression Point: 95 mV
Offset : 1.56mm

Measurement Data

Crest Factor : 1

Channel : 2412



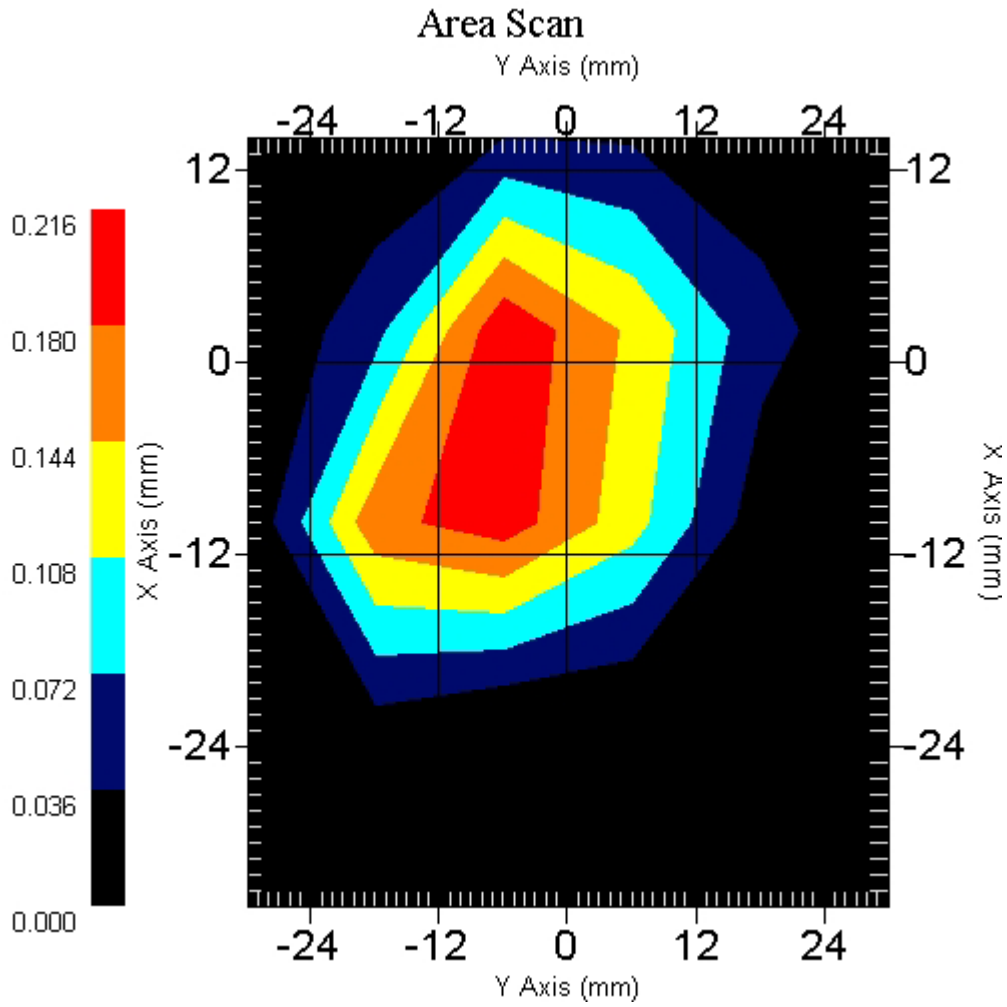
1 gram SAR value : 0.284 W/kg

10 gram SAR value : 0.110 W/kg

Area Scan Peak SAR : 0.208

Zoom Scan Peak SAR : 0.620

This is previous page plot (zoom in)



ALSAS-10U VER 2.0.0APREL Laboratories

SAR Test Report

Validation Date : 27-May-2005

Measurement Date : 27-May-2005

Product Data

Device Name : PCMCIA CARD
Model : CB801AS
Frequency : 2450.00 MHz
Drift Time : 0 min(s)
Length : 118.5 mm
Width : 54.3 mm
Depth : 6 mm
Antenna Type : Internal
Power Drift-Start : 0.221mv
Power Drift-Finish: 0.222mv
Power Drift (%) : 0.452

Phantom Data

Type : Uni-Phantom
Size : 280mm x 280mm x 200mm
Location : Center

Tissue Data

Type : BODY
Serial No. : 325-B
Frequency : 2450 MHz
Last Calibration Date : 27-May-2004
Temperature : 21.5 °C
Ambient Temp. : 22.3 °C
Humidity : 50 RH%
Epsilon : 51.62 F/m
Sigma : 1.91 S/m
Density : 1000 kg/cu. m

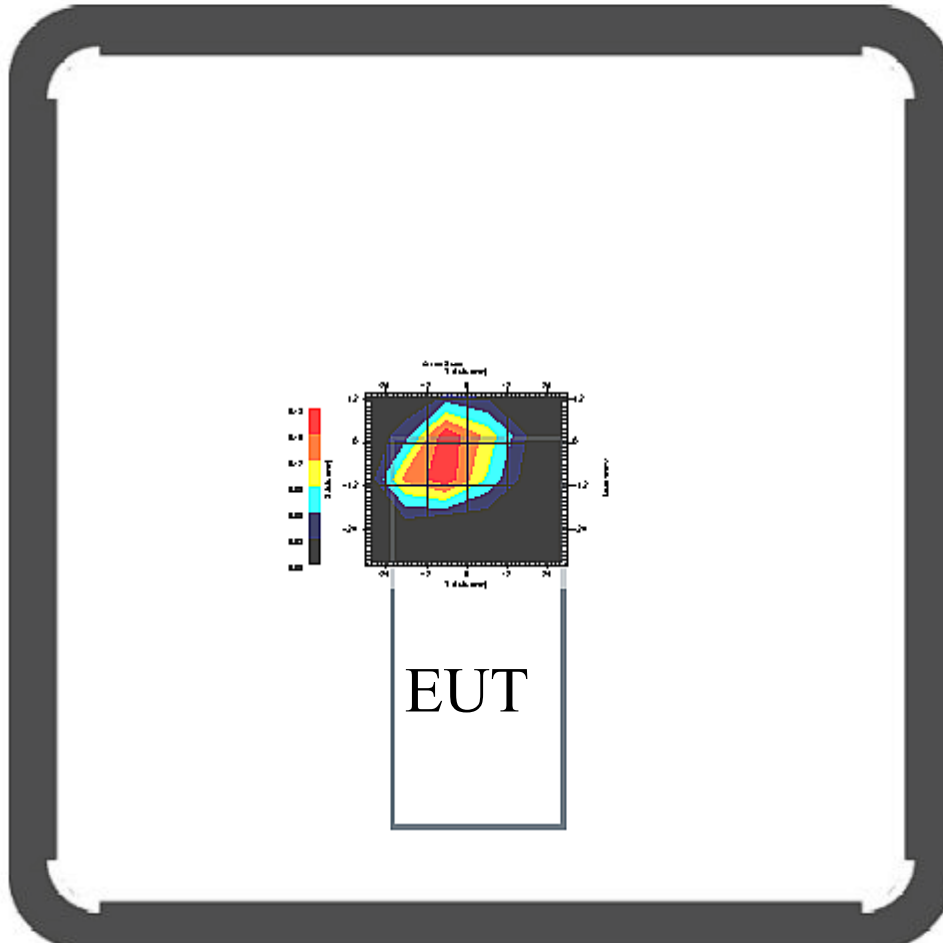
Probe Data

Model : E020
Type : E-Field Triangle
Serial No. : 265
Last Calibration Date : 23-Mar-2005
Frequency : 2450 MHz
Duty Cycle Factor: 1
Conversion Factor: 4.7
Probe Sensitivity: 1.20 1.20 1.20 $\mu\text{V}/(\text{V}/\text{m})^2$
Compression Point: 95 mV
Offset : 1.56mm

Measurement Data

Crest Factor : 1

Channel : 2437



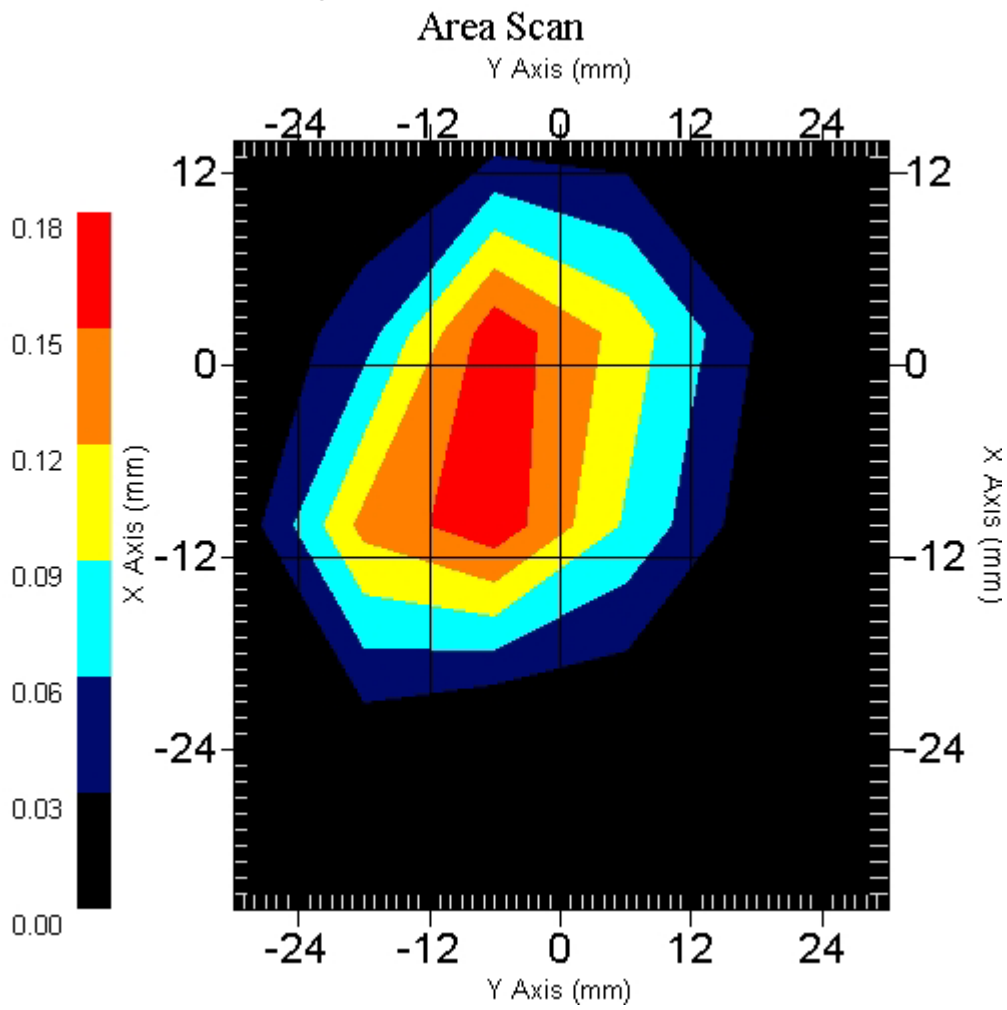
1 gram SAR value : 0.200 W/kg

10 gram SAR value : 0.074 W/kg

Area Scan Peak SAR : 0.171

Zoom Scan Peak SAR : 0.460

This is previous page plot (zoom in)



ALSAS-10U VER 2.0.0APREL Laboratories

SAR Test Report

Validation Date : 27-May-2005

Measurement Date : 27-May-2005

Product Data

Device Name : PCMCIA CARD
Model : CB801AS
Frequency : 2450.00 MHz
Drift Time : 0 min(s)
Length : 118.5 mm
Width : 54.3 mm
Depth : 6 mm
Antenna Type : Internal
Power Drift-Start : 0.195mv
Power Drift-Finish: 0.194mv
Power Drift (%) : -0.513

Phantom Data

Type : Uni-Phantom
Size : 280mm x 280mm x 200mm
Location : Center

Tissue Data

Type : BODY
Serial No. : 325-B
Frequency : 2450 MHz
Last Calibration Date : 27-May-2004
Temperature : 21.5 °C
Ambient Temp. : 22.3 °C
Humidity : 50 RH%
Epsilon : 51.62 F/m
Sigma : 1.91 S/m
Density : 1000 kg/cu. m

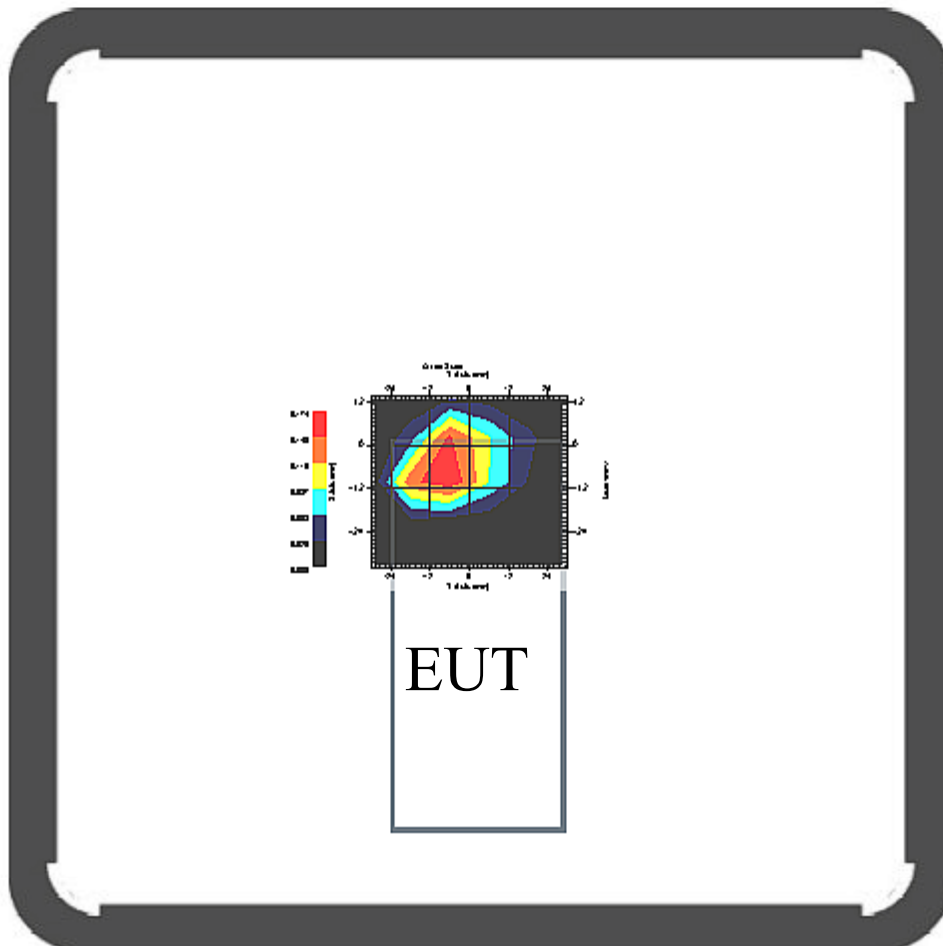
Probe Data

Model : E020
Type : E-Field Triangle
Serial No. : 265
Last Calibration Date : 23-Mar-2005
Frequency : 2450 MHz
Duty Cycle Factor: 1
Conversion Factor: 4.7
Probe Sensitivity: 1.20 1.20 1.20 $\mu\text{V}/(\text{V}/\text{m})^2$
Compression Point: 95 mV
Offset : 1.56mm

Measurement Data

Crest Factor : 1

Channel : 2462



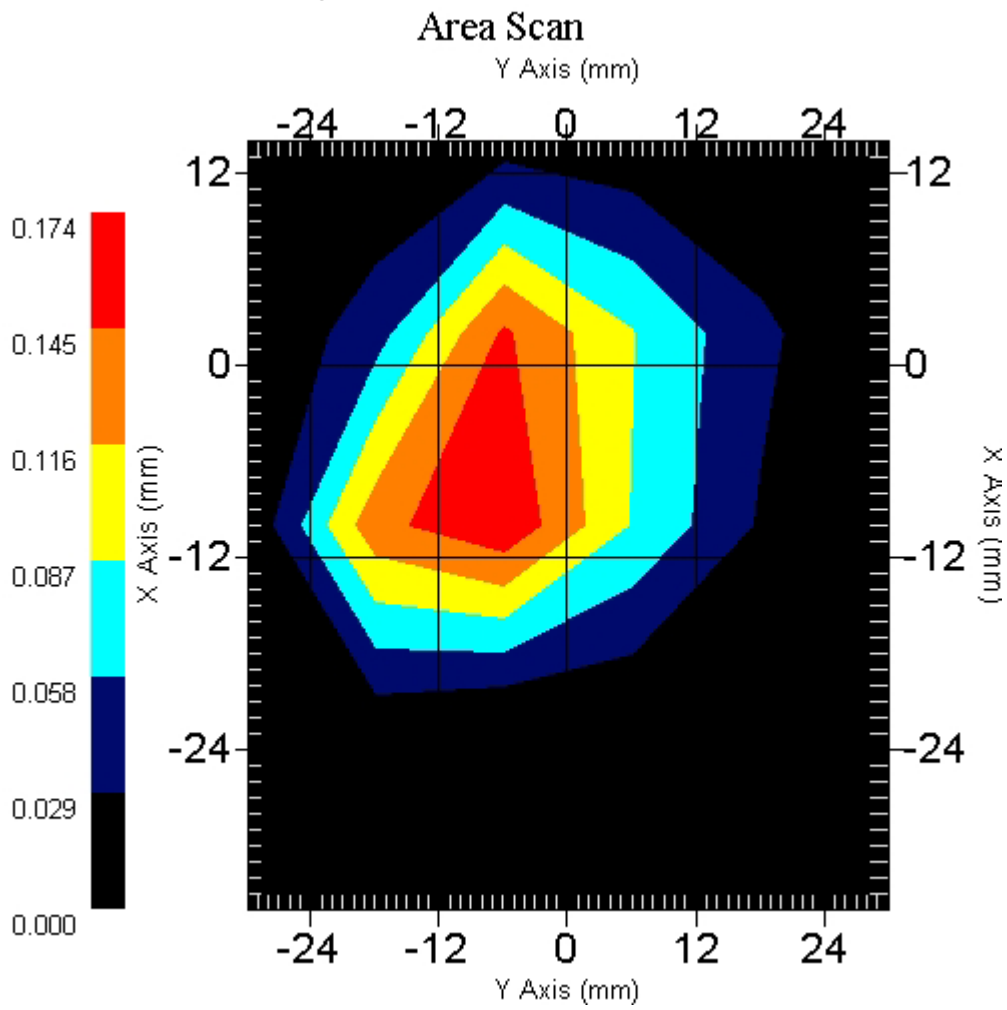
1 gram SAR value : 0.108 W/kg

10 gram SAR value : 0.034 W/kg

Area Scan Peak SAR : 0.169

Zoom Scan Peak SAR : 0.310

This is previous page plot (zoom in)



ALSAS-10U VER 2.0.0APREL Laboratories

SAR Test Report

Validation Date : 27-May-2005

Measurement Date : 27-May-2005

Product Data

Device Name : PCMCIA CARD
Model : CB801AS
Frequency : 2450.00 MHz
Drift Time : 0 min(s)
Length : 54.3 mm
Width : 6 mm
Depth : 118.5 mm
Antenna Type : Internal
Power Drift-Start : 0.081mv
Power Drift-Finish: 0.079mv
Power Drift (%) : -2.531

Phantom Data

Type : Uni-Phantom
Size : 280mm x 280mm x 200mm
Location : Center

Tissue Data

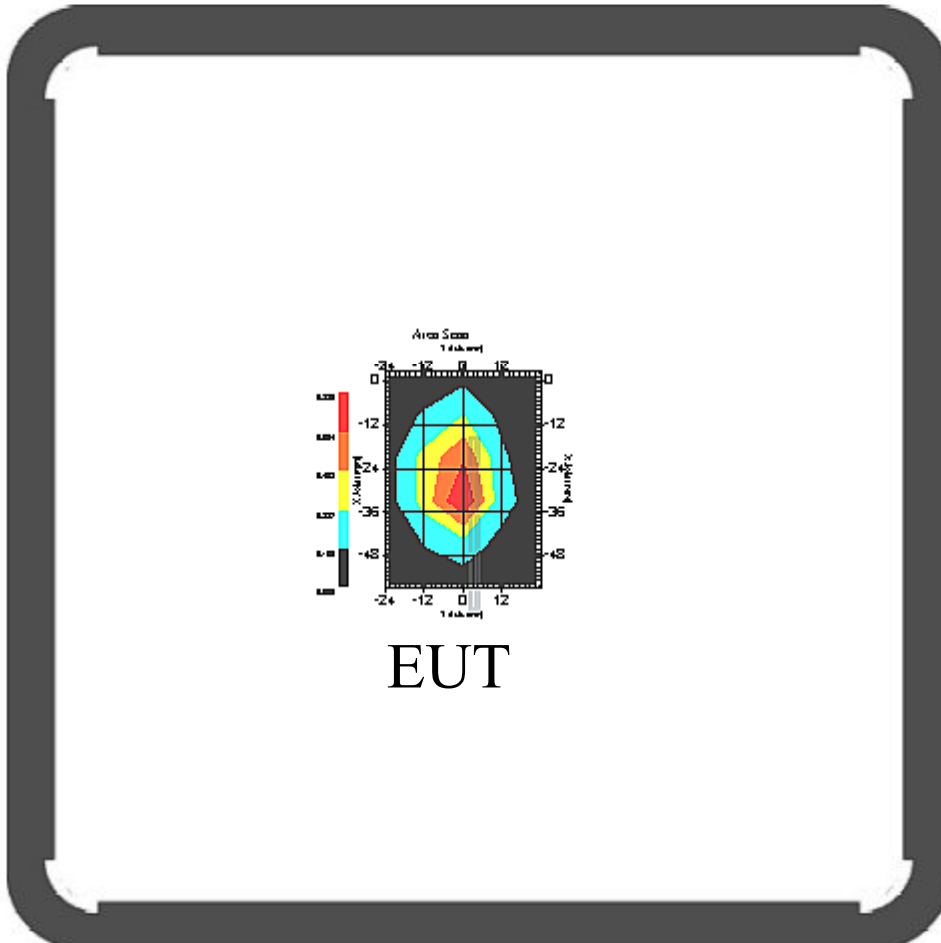
Type : BODY
Serial No. : 325-B
Frequency : 2450 MHz
Last Calibration Date : 27-May-2004
Temperature : 21.5 °C
Ambient Temp. : 22.3 °C
Humidity : 50 RH%
Epsilon : 51.62 F/m
Sigma : 1.91 S/m
Density : 1000 kg/cu. m

Probe Data

Model : E020
Type : E-Field Triangle
Serial No. : 265
Last Calibration Date : 23-Mar-2005
Frequency : 2450 MHz
Duty Cycle Factor: 1
Conversion Factor: 4.7
Probe Sensitivity: 1.20 1.20 1.20 $\mu\text{V}/(\text{V}/\text{m})^2$
Compression Point: 95 mV
Offset : 1.56mm

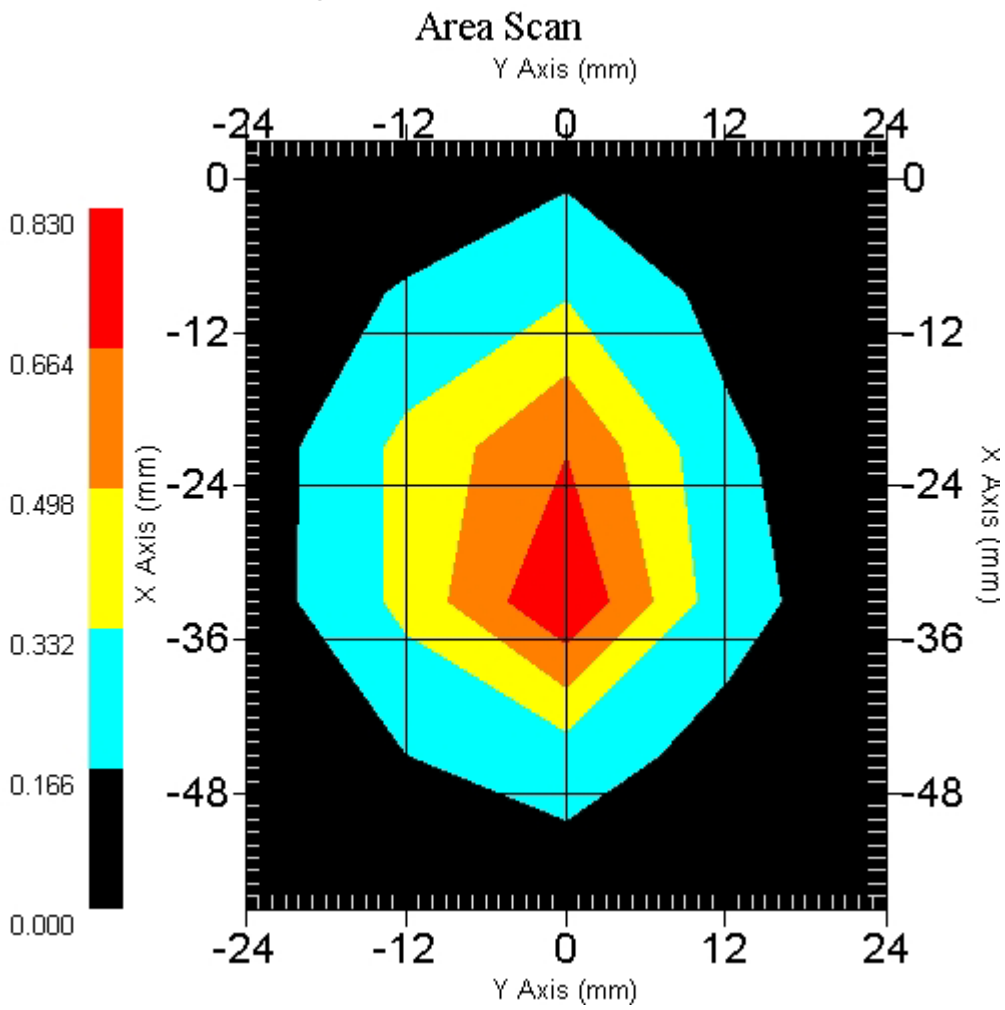
Measurement Data

Crest Factor : 1
Channel : 2412



1 gram SAR value : 0.626 W/kg
10 gram SAR value : 0.298 W/kg
Area Scan Peak SAR : 0.826
Zoom Scan Peak SAR : 1.291

This is previous page plot (zoom in)



ALSAS-10U VER 2.0.0APREL Laboratories

SAR Test Report

Validation Date : 27-May-2005

Measurement Date : 27-May-2005

Product Data

Device Name : PCMCIA CARD
Model : CB801AS
Frequency : 2450.00 MHz
Drift Time : 0 min(s)
Length : 54.3 mm
Width : 6 mm
Depth : 118.5 mm
Antenna Type : Internal
Power Drift-Start : 0.120mv
Power Drift-Finish: 0.121mv
Power Drift (%) : 0.833

Phantom Data

Type : Uni-Phantom
Size : 280mm x 280mm x 200mm
Location : Center

Tissue Data

Type : BODY
Serial No. : 325-B
Frequency : 2450 MHz
Last Calibration Date : 27-May-2004
Temperature : 21.5 °C
Ambient Temp. : 22.3 °C
Humidity : 50 RH%
Epsilon : 51.62 F/m
Sigma : 1.91 S/m
Density : 1000 kg/cu. m

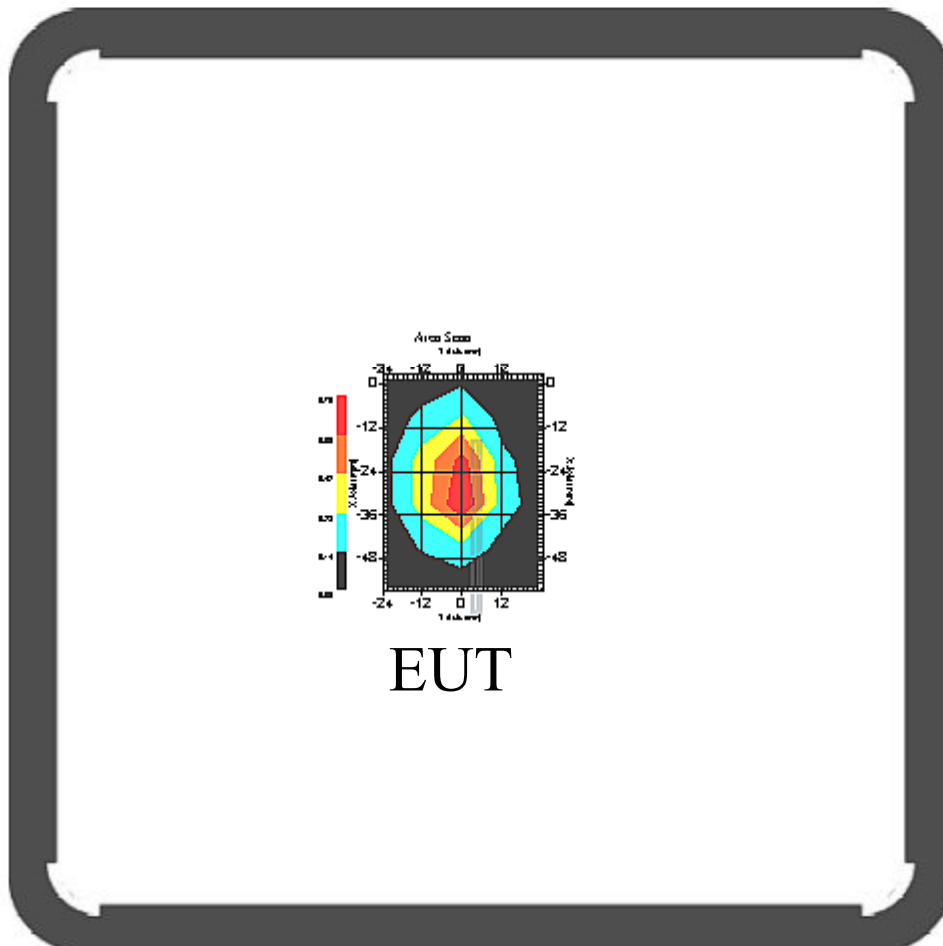
Probe Data

Model : E020
Type : E-Field Triangle
Serial No. : 265
Last Calibration Date : 23-Mar-2005
Frequency : 2450 MHz
Duty Cycle Factor: 1
Conversion Factor: 4.7
Probe Sensitivity: 1.20 1.20 1.20 $\mu\text{V}/(\text{V}/\text{m})^2$
Compression Point: 95 mV
Offset : 1.56mm

Measurement Data

Crest Factor : 1

Channel : 2437



EUT

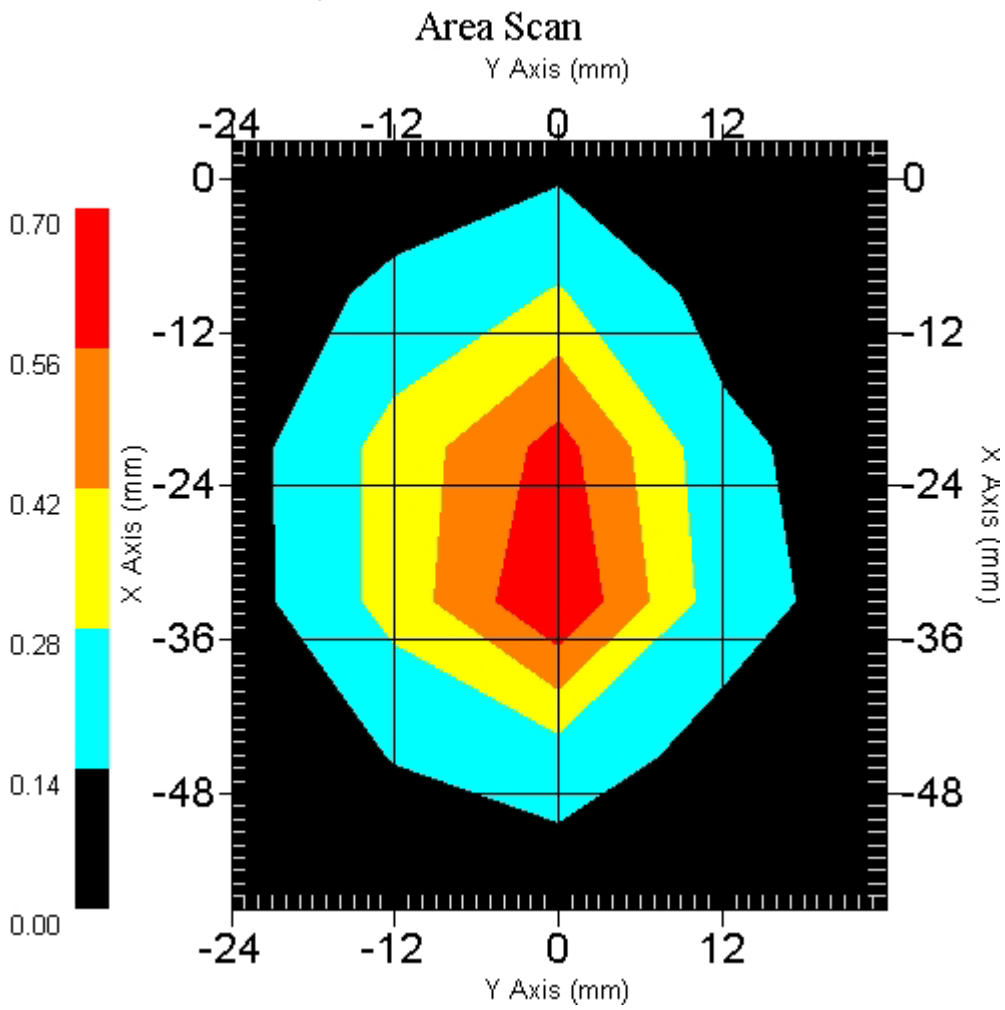
1 gram SAR value : 0.570 W/kg

10 gram SAR value : 0.284 W/kg

Area Scan Peak SAR : 0.696

Zoom Scan Peak SAR : 1.100

This is previous page plot (zoom in)



ALSAS-10U VER 2.0.0APREL Laboratories**SAR Test Report**

Validation Date : 27-May-2005

Measurement Date : 27-May-2005

Product Data

Device Name : PCMCIA CARD

Model : CB801AS

Frequency : 2450.00 MHz

Drift Time : 0 min(s)

Length : 54.3 mm

Width : 6 mm

Depth : 0 mm

Antenna Type : Internal

Power Drift-Start : 0.213mv

Power Drift-Finish: 0.211mv

Power Drift (%) : 29.360

Phantom Data

Type : Uni-Phantom

Size : 280mm x 280mm x 200mm

Location : Center

Tissue Data

Type : BODY

Serial No. : 325-B

Frequency : 2450 MHz

Last Calibration Date : 27-May-2004

Temperature : 21.5 °C

Ambient Temp. : 22.3 °C

Humidity : 50 RH%

Epsilon : 51.62 F/m

Sigma : 1.91 S/m

Density : 1000 kg/cu. m

Probe Data

Model : E020

Type : E-Field Triangle

Serial No. : 265

Last Calibration Date : 23-Mar-2005

Frequency : 2450 MHz

Duty Cycle Factor: 1

Conversion Factor: 4.7

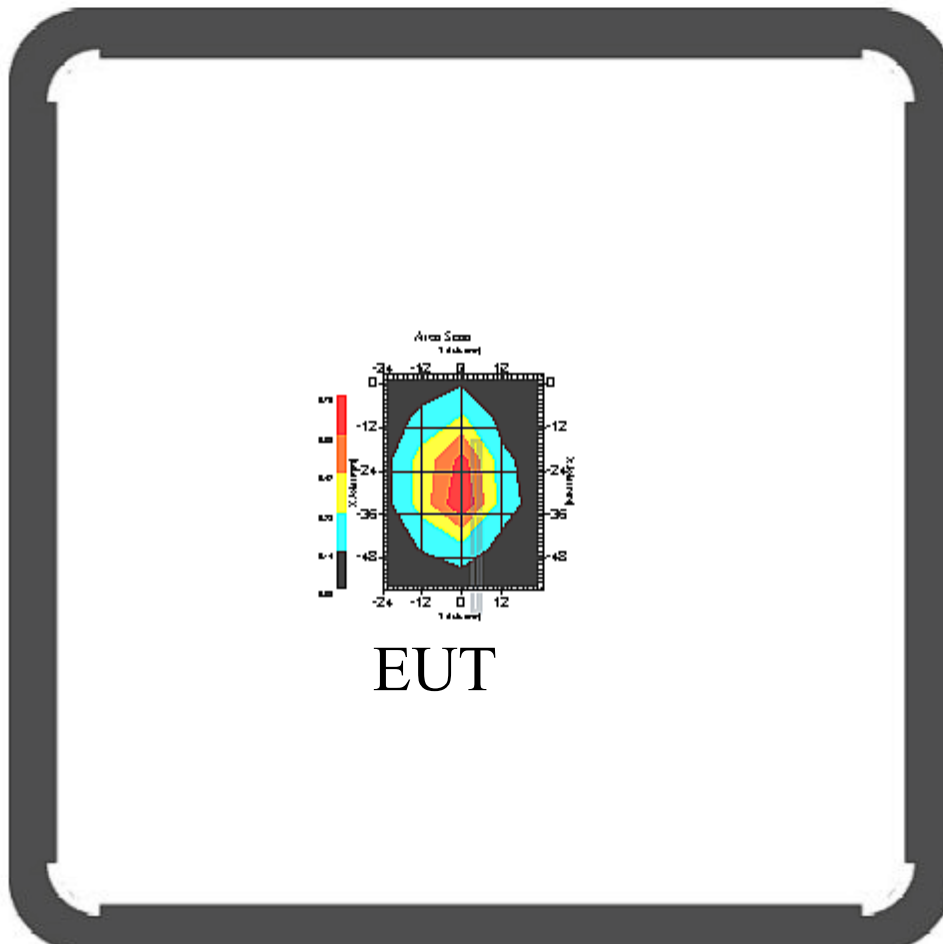
Probe Sensitivity: 1.20 1.20 1.20 $\mu\text{V}/(\text{V}/\text{m})^2$

Compression Point: 95 mV

Offset : 1.56mm

Measurement Data

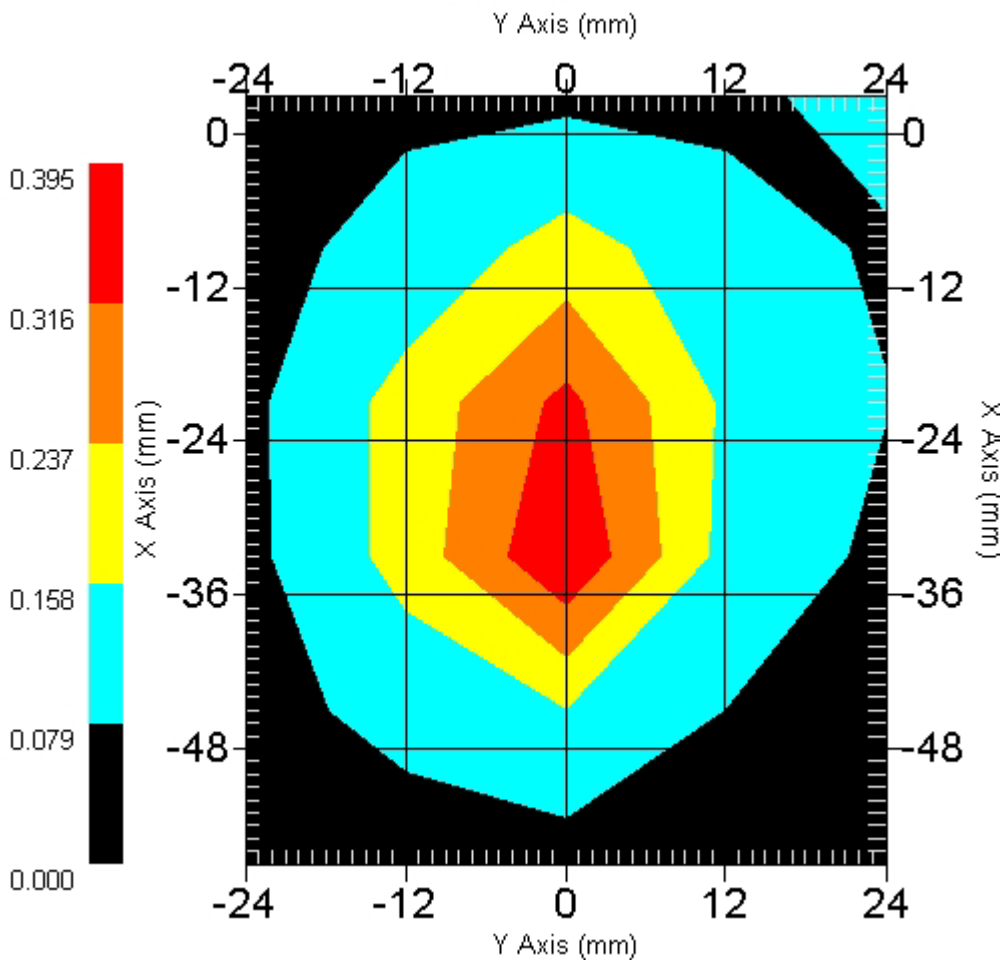
Crest Factor : 1
Channel : 2462



1 gram SAR value : 0.454 W/kg
10 gram SAR value : 0.237 W/kg
Area Scan Peak SAR : 0.561
Zoom Scan Peak SAR : 0.920

This is previous page plot (zoom in)

Area Scan



ALSAS-10U VER 2.0.0APREL Laboratories

SAR Test Report

Validation Date : 27-May-2005

Measurement Date : 27-May-2005

Product Data

Device Name : PCMCIA CARD
Model : CB801AS
Frequency : 2450.00 MHz
Drift Time : 0 min(s)
Length : 118.5 mm
Width : 54.3 mm
Depth : 6 mm
Antenna Type : Internal
Power Drift-Start : 0.264mv
Power Drift-Finish: 0.258mv
Power Drift (%) : -2.209

Phantom Data

Type : Uni-Phantom
Size : 280mm x 280mm x 200mm
Location : Center

Tissue Data

Type : BODY
Serial No. : 325-B
Frequency : 2450 MHz
Last Calibration Date : 27-May-2004
Temperature : 21.5 °C
Ambient Temp. : 22.3 °C
Humidity : 50 RH%
Epsilon : 51.62 F/m
Sigma : 1.91 S/m
Density : 1000 kg/cu. m

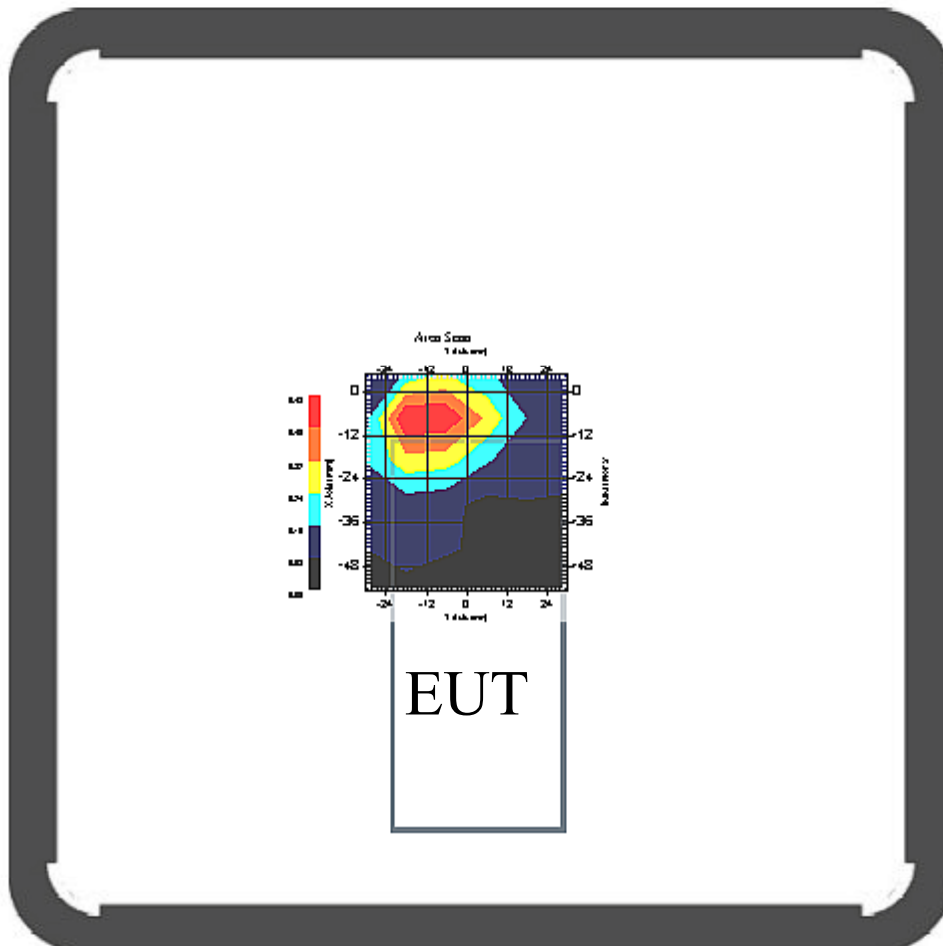
Probe Data

Model : E020
Type : E-Field Triangle
Serial No. : 265
Last Calibration Date : 23-Mar-2005
Frequency : 2450 MHz
Duty Cycle Factor: 1
Conversion Factor: 4.7
Probe Sensitivity: 1.20 1.20 1.20 $\mu\text{V}/(\text{V}/\text{m})^2$
Compression Point: 95 mV
Offset : 1.56mm

Measurement Data

Crest Factor : 1

Channel : 2412



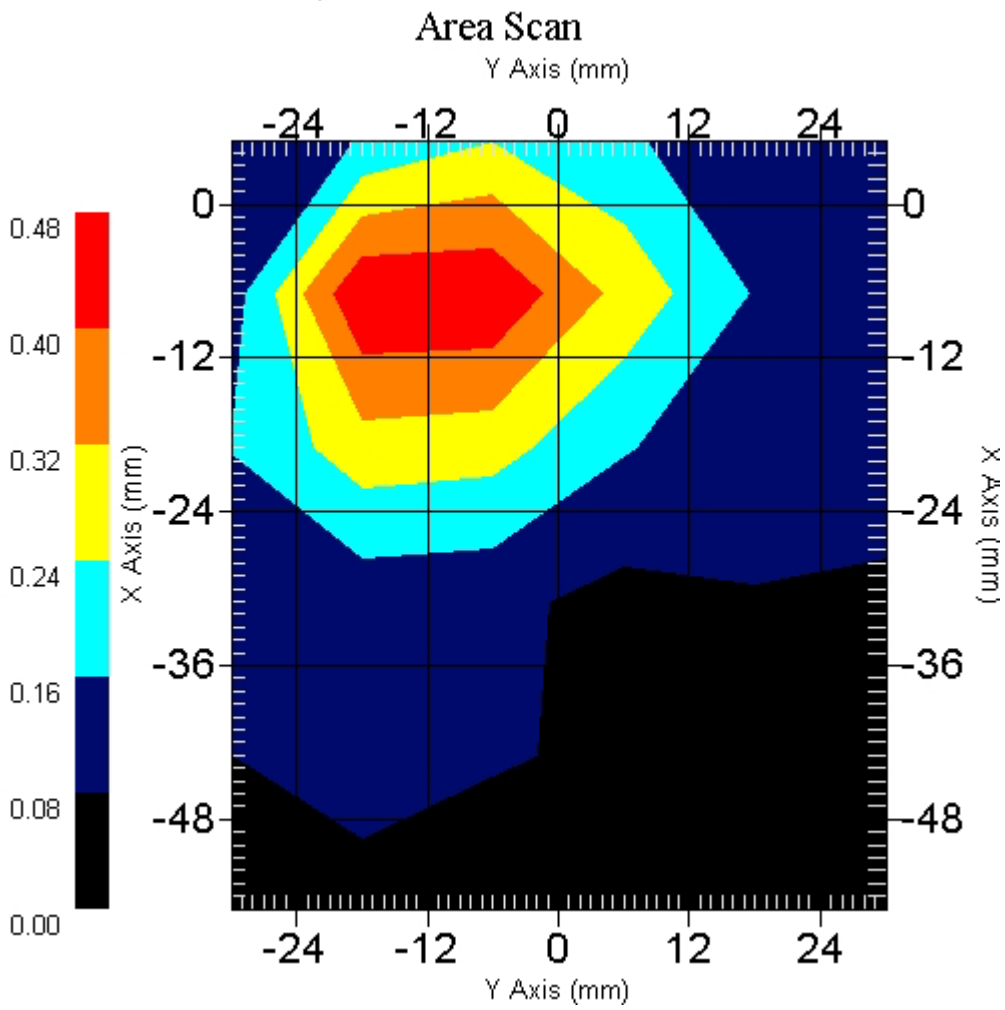
1 gram SAR value : 0.500 W/kg

10 gram SAR value : 0.267 W/kg

Area Scan Peak SAR : 0.474

Zoom Scan Peak SAR : 0.940

This is previous page plot (zoom in)



ALSAS-10U VER 2.0.0APREL Laboratories

SAR Test Report

Validation Date : 27-May-2005

Measurement Date : 27-May-2005

Product Data

Device Name : PCMCIA CARD
Model : CB801AS
Frequency : 2450.00 MHz
Drift Time : 0 min(s)
Length : 118.5 mm
Width : 54.3 mm
Depth : 6 mm
Antenna Type : Internal
Power Drift-Start : 0.247mm
Power Drift-Finish: 0.248mm
Power Drift (%) :0.409

Phantom Data

Type : Uni-Phantom
Size : 280mm x 280mm x 200mm
Location : Center

Tissue Data

Type : BODY
Serial No. : 325-B
Frequency : 2450 MHz
Last Calibration Date : 27-May-2004
Temperature : 21.5 °C
Ambient Temp. : 22.3 °C
Humidity : 50 RH%
Epsilon : 51.62 F/m
Sigma : 1.91 S/m
Density : 1000 kg/cu. m

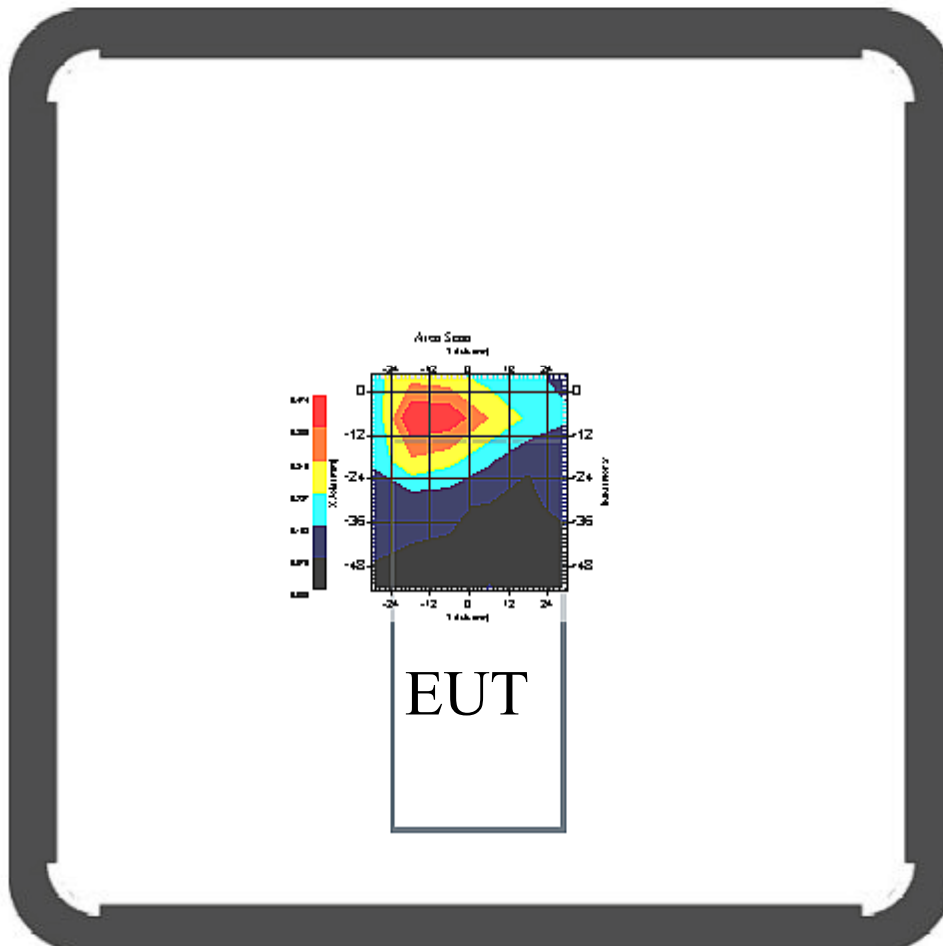
Probe Data

Model : E020
Type : E-Field Triangle
Serial No. : 265
Last Calibration Date : 23-Mar-2005
Frequency : 2450 MHz
Duty Cycle Factor: 1
Conversion Factor: 4.7
Probe Sensitivity: 1.20 1.20 1.20 $\mu\text{V}/(\text{V}/\text{m})^2$
Compression Point: 95 mV
Offset : 1.56mm

Measurement Data

Crest Factor : 1

Channel : 2437



1 gram SAR value : 0.405 W/kg

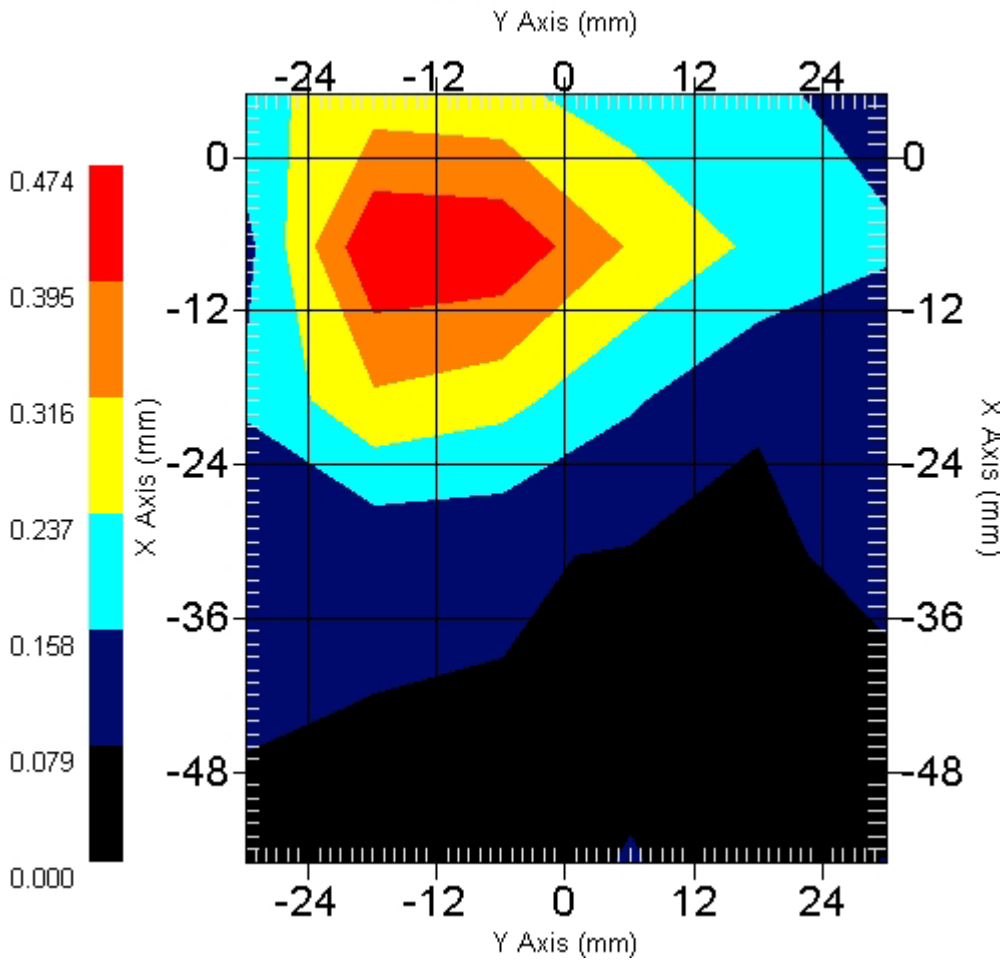
10 gram SAR value : 0.218 W/kg

Area Scan Peak SAR : 0.465

Zoom Scan Peak SAR : 0.740

This is previous page plot (zoom in)

Area Scan



ALSAS-10U VER 2.0.0APREL Laboratories

SAR Test Report

Validation Date : 27-May-2005

Measurement Date : 27-May-2005

Product Data

Device Name : PCMCIA CARD
Model : CB801AS
Frequency : 2450.00 MHz
Drift Time : 0 min(s)
Length : 118.5 mm
Width : 54.3 mm
Depth : 6 mm
Antenna Type : Internal
Power Drift-Start : 0.270mm
Power Drift-Finish: 0.271mm
Power Drift (%) : 0.371

Phantom Data

Type : Uni-Phantom
Size : 280mm x 280mm x 200mm
Location : Center

Tissue Data

Type : BODY
Serial No. : 325-B
Frequency : 2450 MHz
Last Calibration Date : 27-May-2004
Temperature : 21.5 °C
Ambient Temp. : 22.3 °C
Humidity : 50 RH%
Epsilon : 51.62 F/m
Sigma : 1.91 S/m
Density : 1000 kg/cu. m

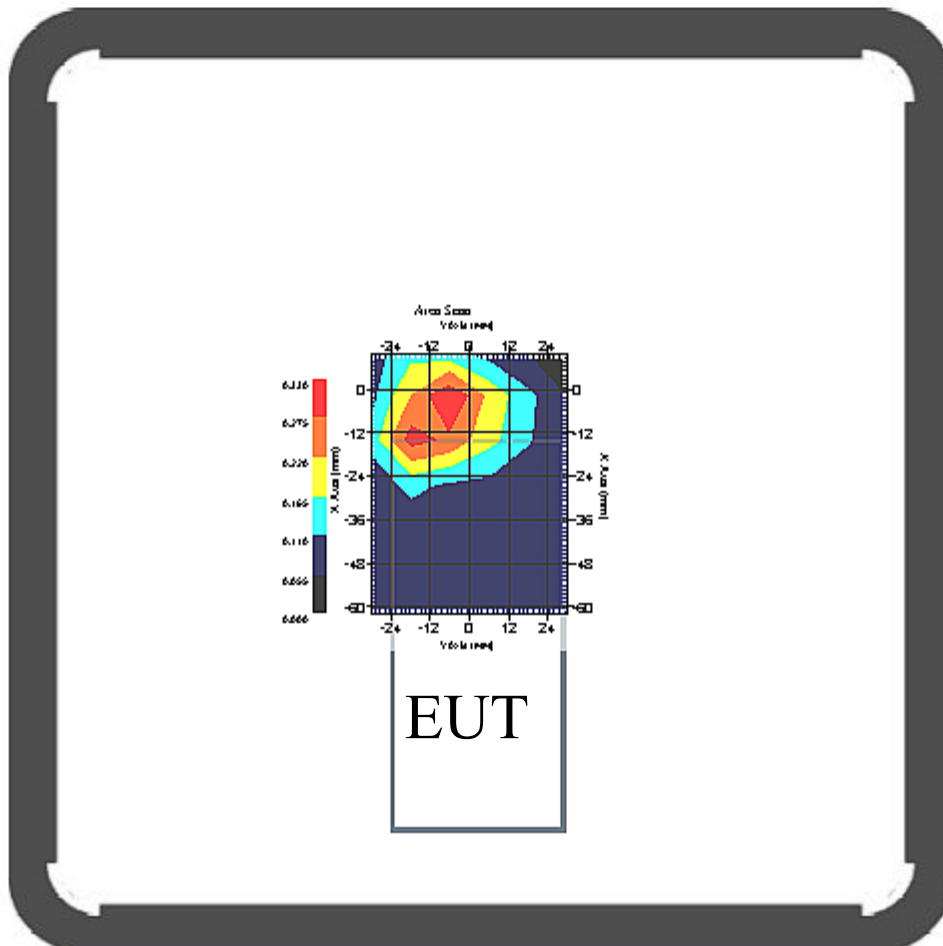
Probe Data

Model : E020
Type : E-Field Triangle
Serial No. : 265
Last Calibration Date : 23-Mar-2005
Frequency : 2450 MHz
Duty Cycle Factor: 1
Conversion Factor: 4.7
Probe Sensitivity: 1.20 1.20 1.20 $\mu\text{V}/(\text{V}/\text{m})^2$
Compression Point: 95 mV
Offset : 1.56mm

Measurement Data

Crest Factor : 1

Channel : 2462



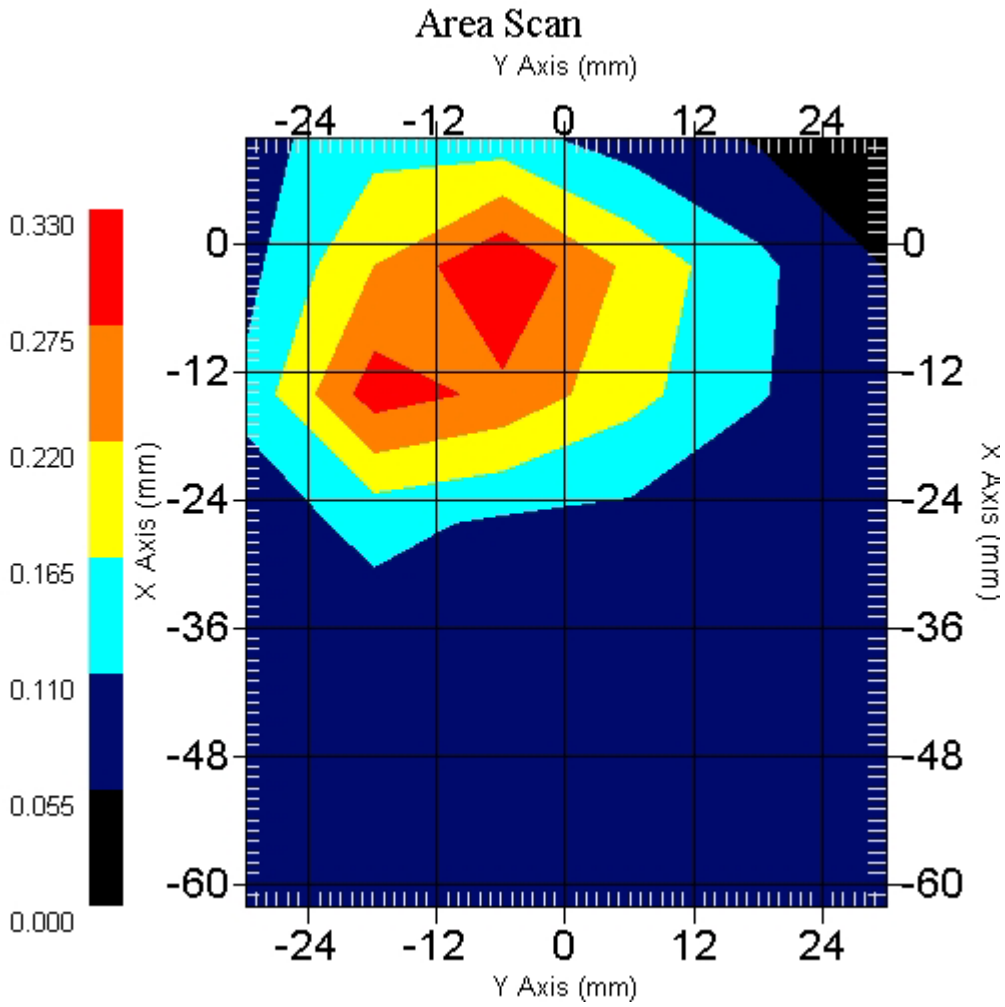
1 gram SAR value : 0.348 W/kg

10 gram SAR value : 0.203 W/kg

Area Scan Peak SAR : 0.327

Zoom Scan Peak SAR : 0.620

This is previous page plot (zoom in)



ALSAS-10U VER 2.0.0APREL Laboratories

SAR Test Report

Validation Date : 27-May-2005

Measurement Date : 27-May-2005

Product Data

Device Name : PCMCIA CARD
Model : CB801AS
Frequency : 2450.00 MHz
Drift Time : 0 min(s)
Length : 118.5 mm
Width : 54.3 mm
Depth : 6 mm
Antenna Type : Internal
Power Drift-Start : 0.125mm
Power Drift-Finish: 0.129mm
Power Drift (%) : 3.200

Phantom Data

Type : Uni-Phantom
Size : 280mm x 280mm x 200mm
Location : Center

Tissue Data

Type : BODY
Serial No. : 325-B
Frequency : 2450 MHz
Last Calibration Date : 27-May-2004
Temperature : 21.5 °C
Ambient Temp. : 22.3 °C
Humidity : 50 RH%
Epsilon : 51.62 F/m
Sigma : 1.91 S/m
Density : 1000 kg/cu. m

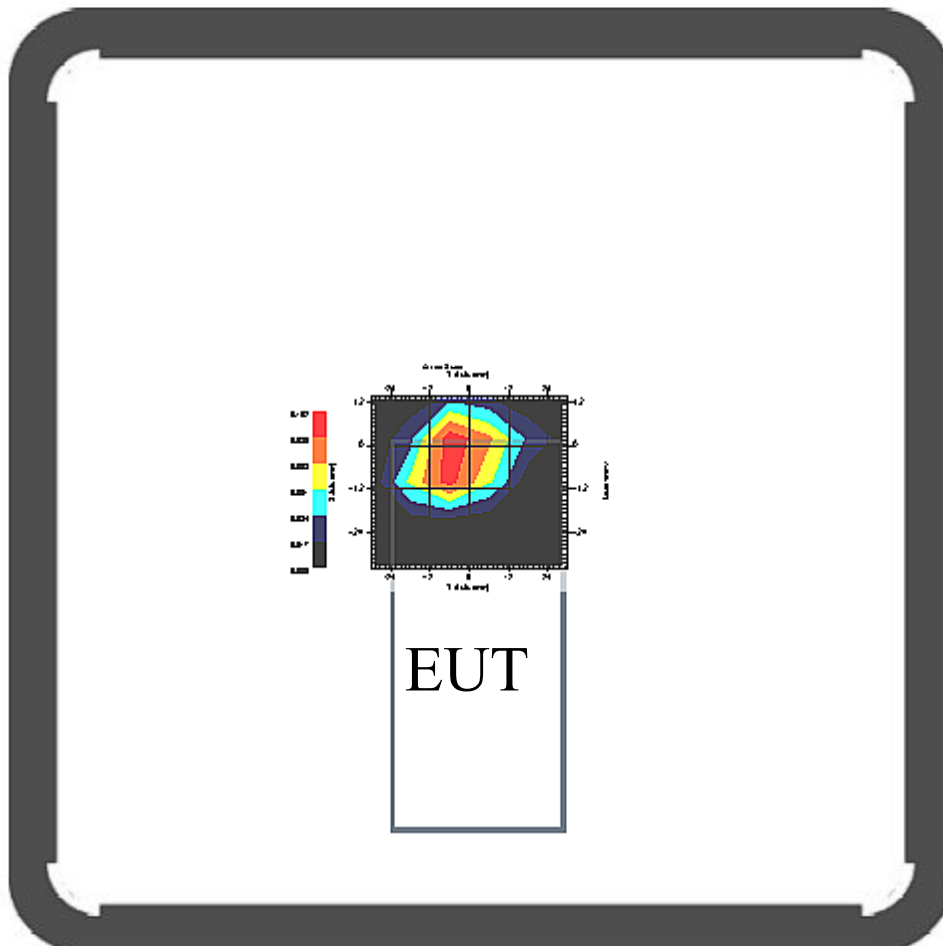
Probe Data

Model : E020
Type : E-Field Triangle
Serial No. : 265
Last Calibration Date : 23-Mar-2005
Frequency : 2450 MHz
Duty Cycle Factor: 1
Conversion Factor: 4.7
Probe Sensitivity: 1.20 1.20 1.20 $\mu\text{V}/(\text{V}/\text{m})^2$
Compression Point: 95 mV
Offset : 1.56mm

Measurement Data

Crest Factor : 1

Channel : 2412



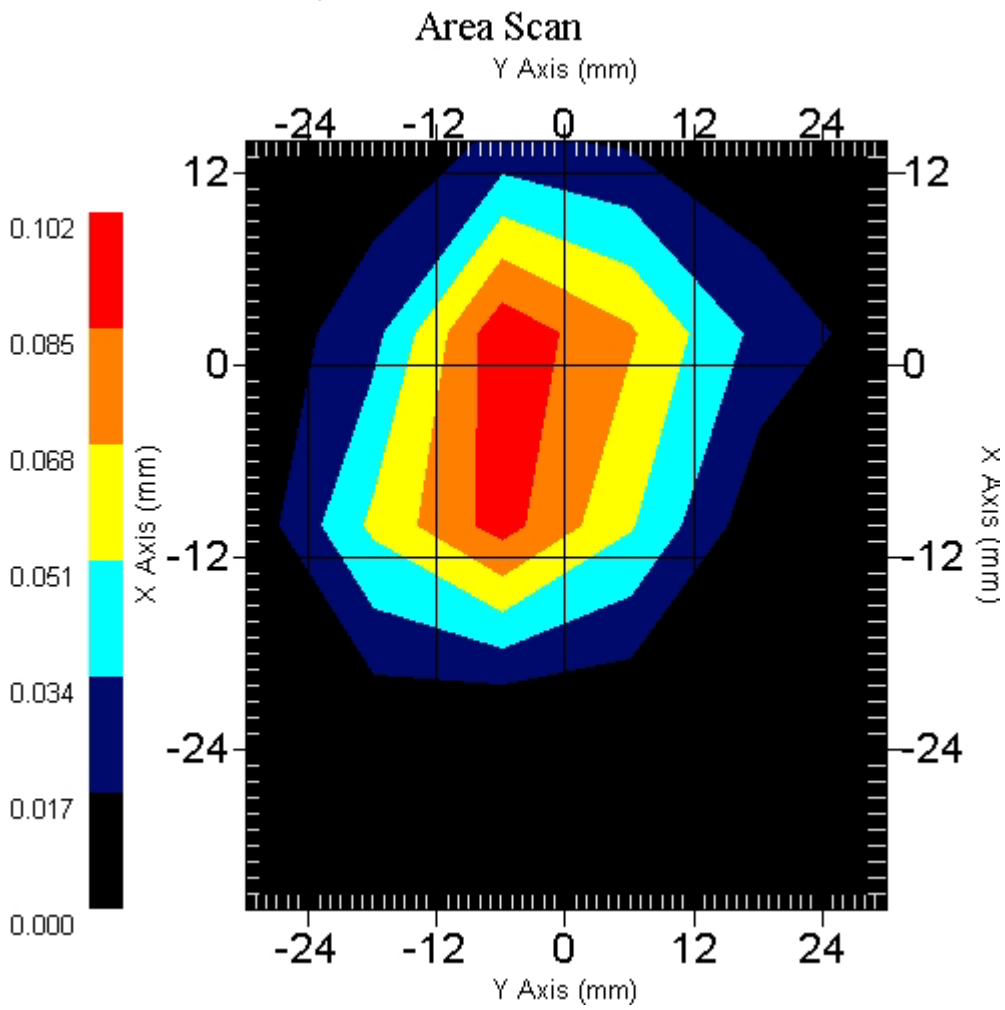
1 gram SAR value : 0.100 W/kg

10 gram SAR value : 0.040 W/kg

Area Scan Peak SAR : 0.097

Zoom Scan Peak SAR : 0.220

This is previous page plot (zoom in)



ALSAS-10U VER 2.0.0APREL Laboratories

SAR Test Report

Validation Date : 27-May-2005

Measurement Date : 27-May-2005

Product Data

Device Name : PCMCIA CARD

Model : CB801AS

Frequency : 2450.00 MHz

Drift Time : 0 min(s)

Length : 118.5 mm

Width : 54.3 mm

Depth : 6 mm

Antenna Type : Internal

Power Drift-Start : 0.097mv

Power Drift-Finish: 0.094mv

Power Drift (%) : -3.093

Phantom Data

Type : Uni-Phantom

Size : 280mm x 280mm x 200mm

Location : Center

Tissue Data

Type : BODY

Serial No. : 325-B

Frequency : 2450 MHz

Last Calibration Date : 27-May-2004

Temperature : 21.5 °C

Ambient Temp. : 22.3 °C

Humidity : 50 RH%

Epsilon : 51.62 F/m

Sigma : 1.91 S/m

Density : 1000 kg/cu. m

Probe Data

Name : Probe 265

Model : E020

Type : E-Field Triangle

Serial No. : 265

Last Calibration Date : 23-Mar-2005

Frequency : 2450 MHz

Duty Cycle Factor: 1

Conversion Factor: 4.7

Probe Sensitivity: 1.20 1.20 1.20 $\mu\text{V}/(\text{V}/\text{m})^2$

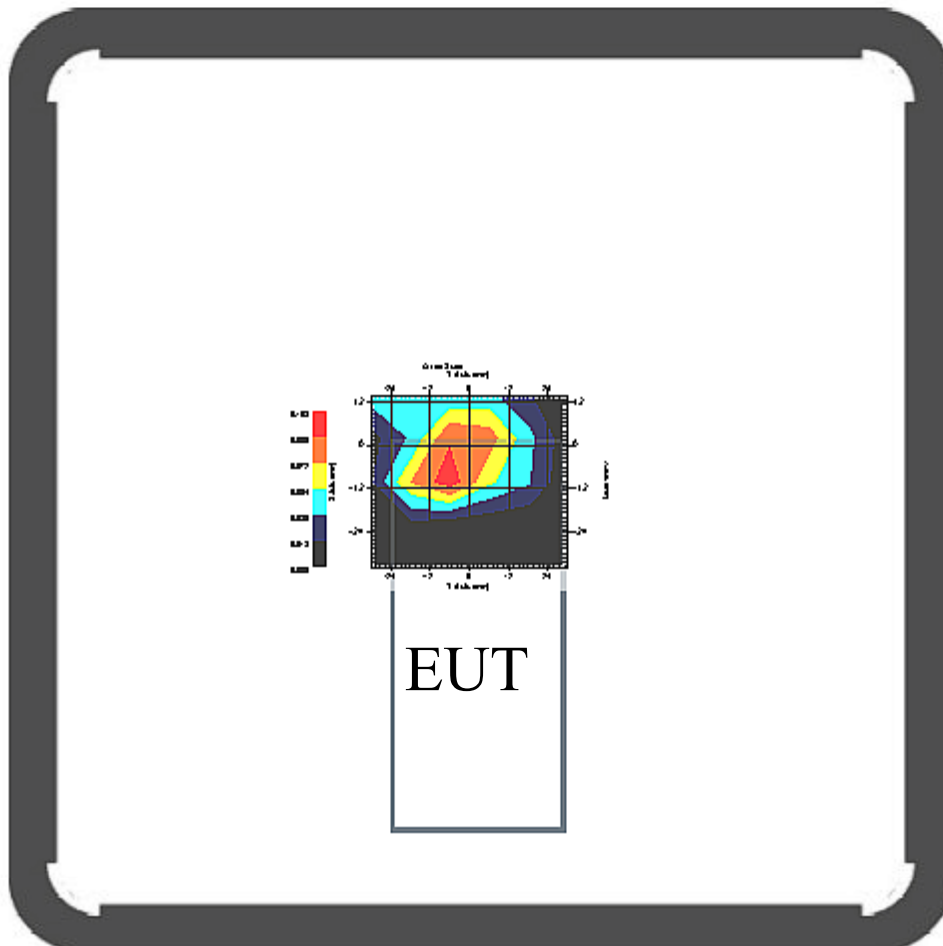
Compression Point: 95 mV

Offset : 1.56mm

Measurement Data

Crest Factor : 1

Channel : 2437



1 gram SAR value : 0.087 W/kg

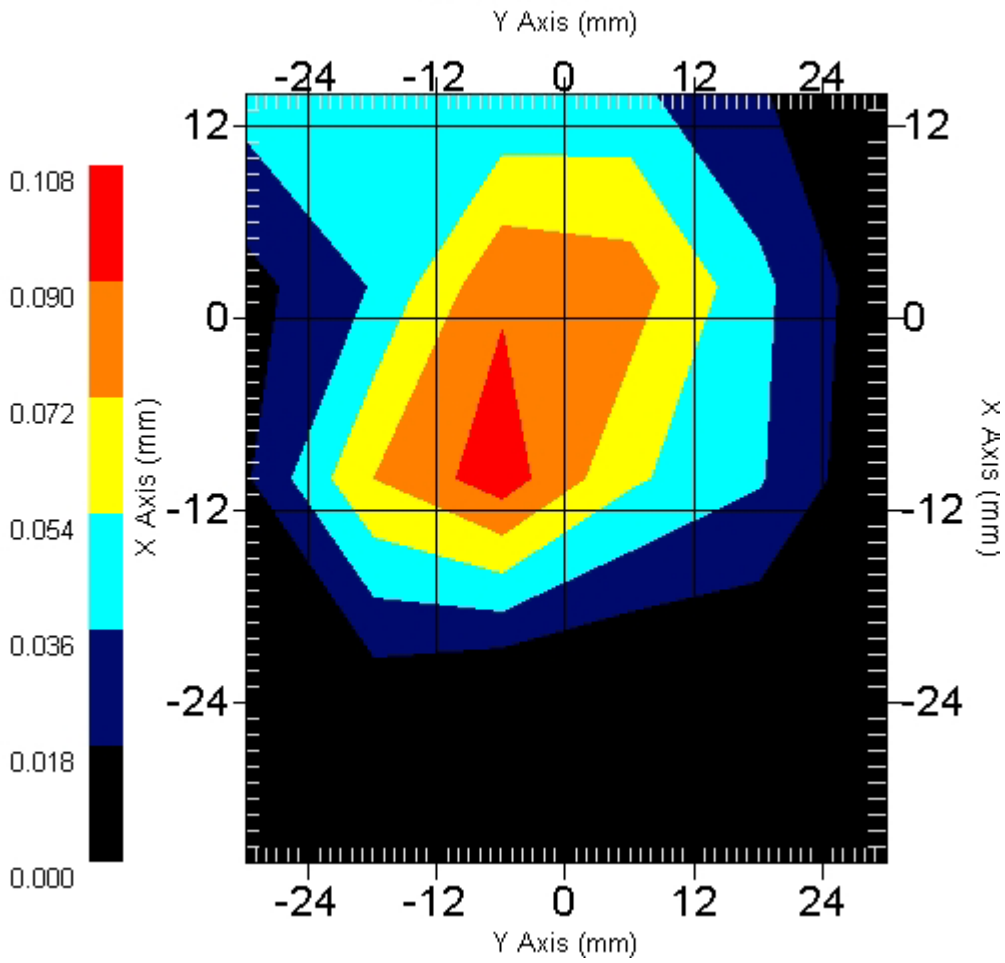
10 gram SAR value : 0.037 W/kg

Area Scan Peak SAR : 0.100

Zoom Scan Peak SAR : 0.170

This is previous page plot (zoom in)

Area Scan



ALSAS-10U VER 2.0.0APREL Laboratories

SAR Test Report

Validation Date : 27-May-2005

Measurement Date : 27-May-2005

Product Data

Device Name : PCMCIA CARD
Model : CB801AS
Frequency : 2450.00 MHz
Drift Time : 0 min(s)
Length : 118.5 mm
Width : 54.3 mm
Depth : 6 mm
Antenna Type : Internal
Power Drift-Start : 0.048mv
Power Drift-Finish: 0.047mv
Power Drift (%) : -2.083

Phantom Data

Type : Uni-Phantom
Size : 280mm x 280mm x 200mm
Location : Center

Tissue Data

Type : BODY
Serial No. : 325-B
Frequency : 2450 MHz
Last Calibration Date : 27-May-2004
Temperature : 21.5 °C
Ambient Temp. : 22.3 °C
Humidity : 50 RH%
Epsilon : 51.62 F/m
Sigma : 1.91 S/m
Density : 1000 kg/cu. m

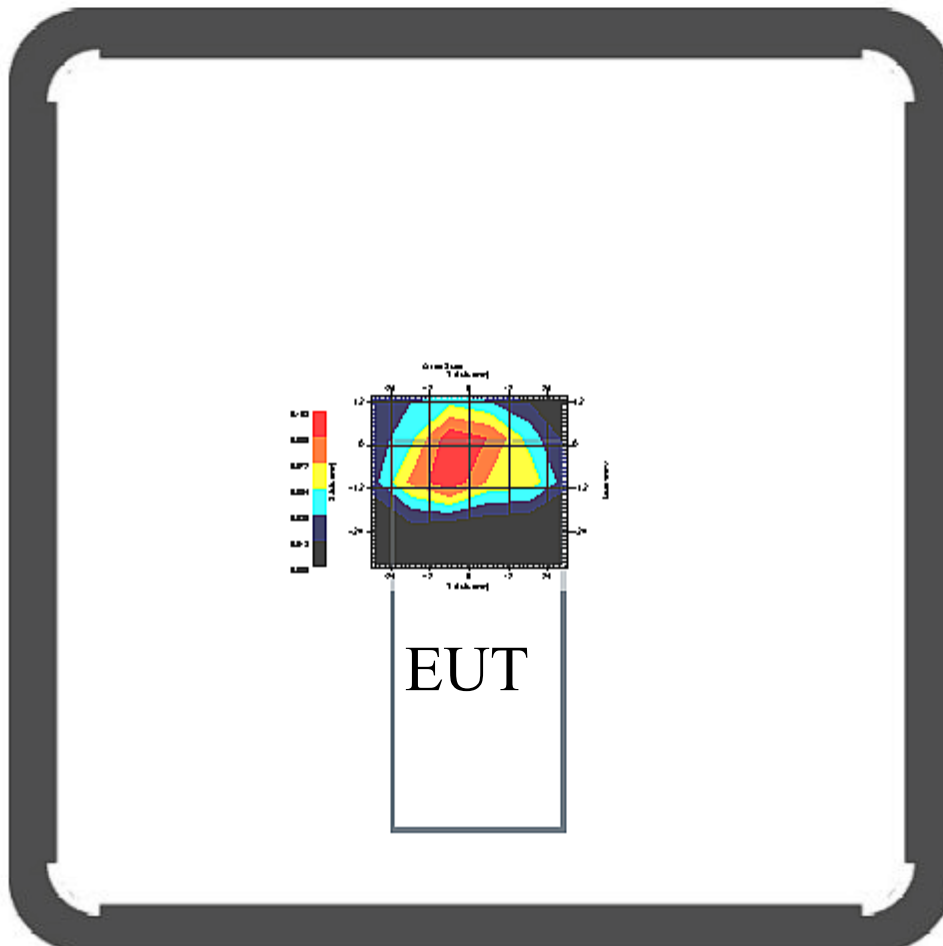
Probe Data

Model : E020
Type : E-Field Triangle
Serial No. : 265
Last Calibration Date : 23-Mar-2005
Frequency : 2450 MHz
Duty Cycle Factor: 1
Conversion Factor: 4.7
Probe Sensitivity: 1.20 1.20 1.20 $\mu\text{V}/(\text{V}/\text{m})^2$
Compression Point: 95 mV
Offset : 1.56mm

Measurement Data

Crest Factor : 1

Channel : 2462



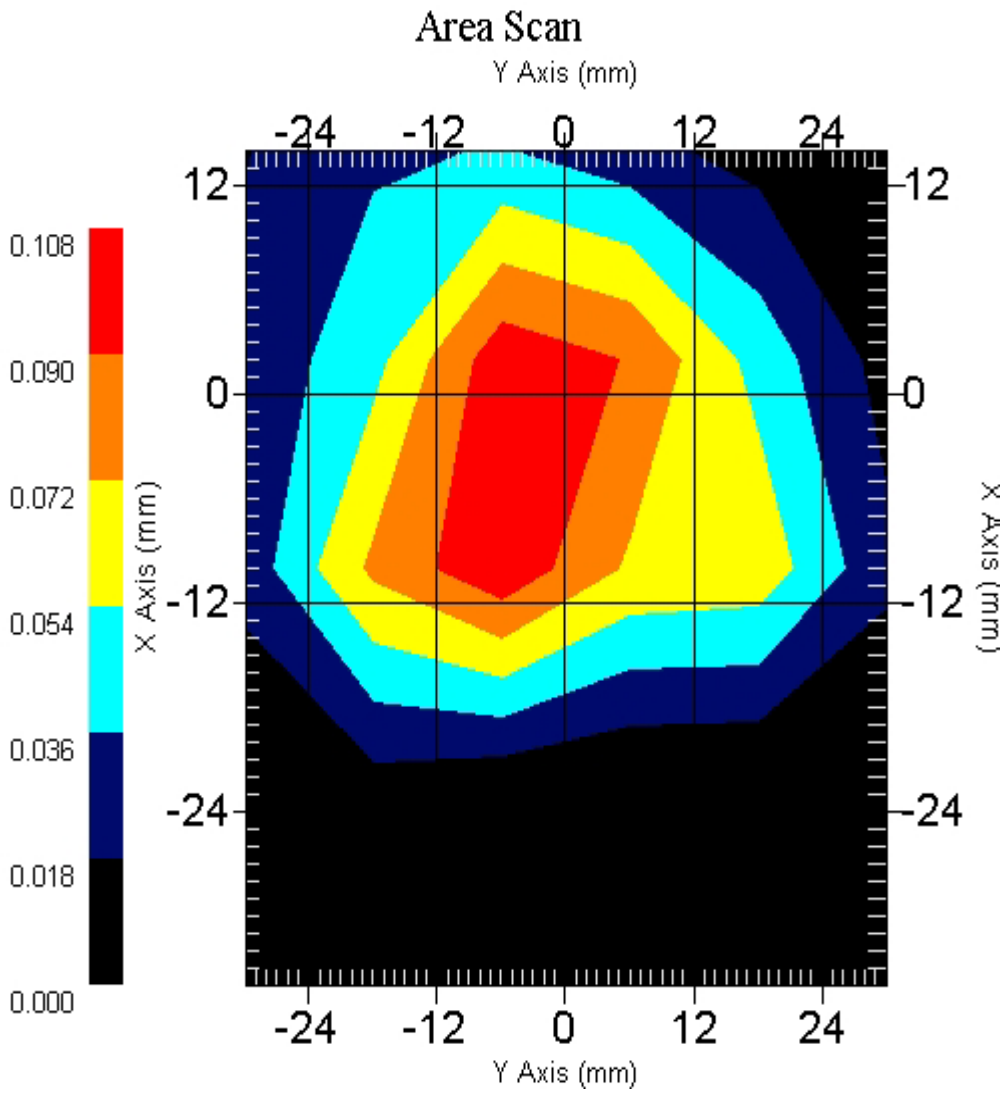
1 gram SAR value : 0.113 W/kg

10 gram SAR value : 0.068 W/kg

Area Scan Peak SAR : 0.104

Zoom Scan Peak SAR : 0.220

This is previous page plot (zoom in)



ALSAS-10U VER 2.0.0APREL Laboratories

SAR Test Report

Validation Date : 27-May-2005

Measurement Date : 27-May-2005

Product Data

Device Name : PCMCIA CARD
Model : CB801AS
Frequency : 2450.00 MHz
Drift Time : 0 min(s)
Length : 54.3 mm
Width : 6 mm
Depth : 118.5 mm
Antenna Type : Internal
Power Drift-Start : 0.100mv
Power Drift-Finish: 0.103mv
Power Drift (%) : 3.081

Phantom Data

Type : Uni-Phantom
Size : 280mm x 280mm x 200mm
Serial No. : User Define

Tissue Data

Type : BODY
Serial No. : 325-B
Frequency : 2450 MHz
Last Calibration Date : 27-May-2004
Temperature : 21.5 °C
Ambient Temp. : 22.3 °C
Humidity : 50 RH%
Epsilon : 51.62 F/m
Sigma : 1.91 S/m
Density : 1000 kg/cu. m

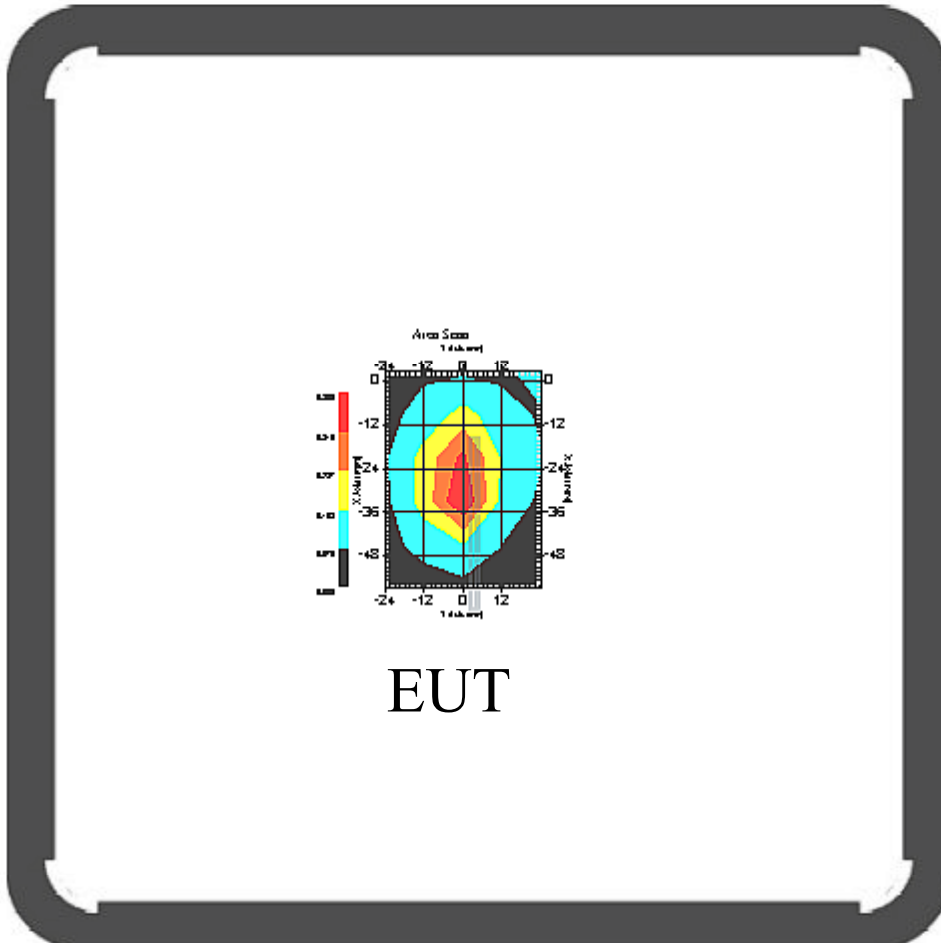
Probe Data

Model : E020
Type : E-Field Triangle
Serial No. : 265
Last Calibration Date : 23-Mar-2005
Frequency : 2450 MHz
Duty Cycle Factor: 1
Conversion Factor: 4.7
Probe Sensitivity: 1.20 1.20 1.20 $\mu\text{V}/(\text{V}/\text{m})^2$
Compression Point: 95 mV
Offset : 1.56mm

Measurement Data

Crest Factor : 1

Channel : 2412



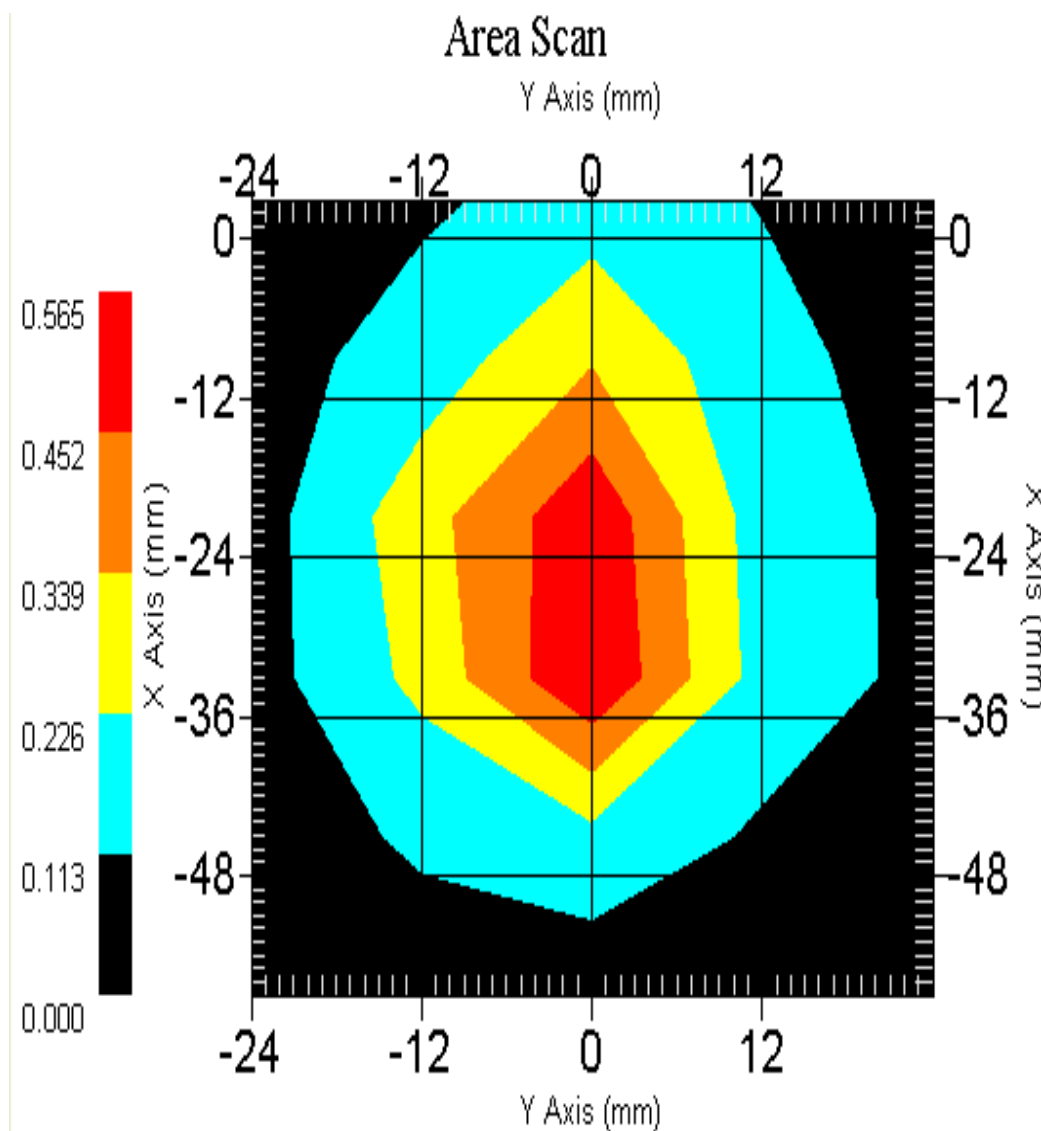
1 gram SAR value : 0.350 W/kg

10 gram SAR value : 0.184 W/kg

Area Scan Peak SAR : 0.389

Zoom Scan Peak SAR : 0.700

This is previous page plot (zoom in)



ALSAS-10U VER 2.0.0APREL Laboratories

SAR Test Report

Validation Date : 27-May-2005

Measurement Date : 27-May-2005

Product Data

Device Name : PCMCIA CARD
Model : CB801AS
Frequency : 2450.00 MHz
Drift Time : 0 min(s)
Length : 54.3 mm
Width : 6 mm
Depth : 118.5 mm
Antenna Type : Internal
Power Drift-Start : 0.100mv
Power Drift-Finish: 0.102mv
Power Drift (%) : 1.961

Phantom Data

Type : Uni-Phantom
Size : 280mm x 280mm x 200mm
Location : Center

Tissue Data

Type : BODY
Serial No. : 325-B
Frequency : 2450 MHz
Last Calibration Date : 27-May-2004
Temperature : 21.5 °C
Ambient Temp. : 22.3 °C
Humidity : 50 RH%
Epsilon : 51.62 F/m
Sigma : 1.91 S/m
Density : 1000 kg/cu. m

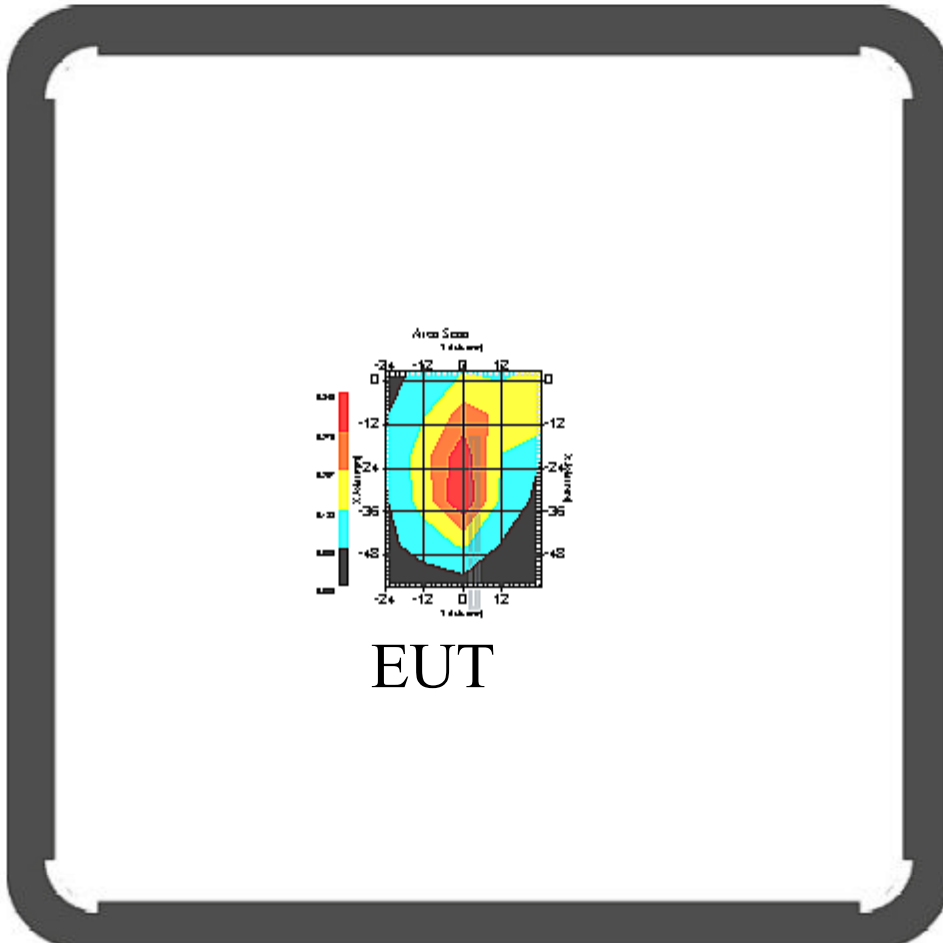
Probe Data

Model : E020
Type : E-Field Triangle
Serial No. : 265
Last Calibration Date : 23-Mar-2005
Frequency : 2450 MHz
Duty Cycle Factor: 1
Conversion Factor: 4.7
Probe Sensitivity: 1.20 1.20 1.20 $\mu\text{V}/(\text{V}/\text{m})^2$
Compression Point: 95 mV
Offset : 1.56mm

Measurement Data

Crest Factor : 1

Channel : 2437



EUT

1 gram SAR value : 0.320 W/kg

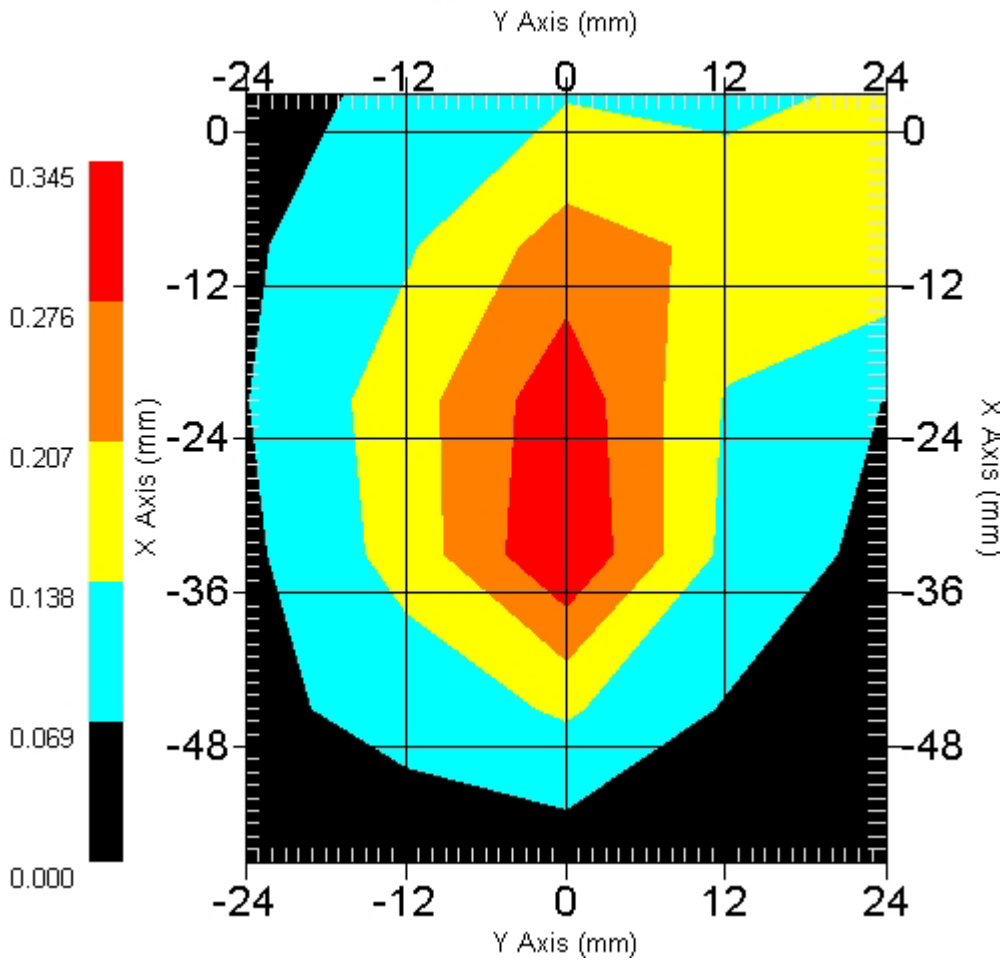
10 gram SAR value : 0.181 W/kg

Area Scan Peak SAR : 0.340

Zoom Scan Peak SAR : 0.600

This is previous page plot (zoom in)

Area Scan



ALSAS-10U VER 2.0.0APREL Laboratories

SAR Test Report

Validation Date : 27-May-2005

Measurement Date : 27-May-2005

Product Data

Device Name : PCMCIA CARD
Model : CB801AS
Frequency : 2450.00 MHz
Drift Time : 0 min(s)
Length : 54.3 mm
Width : 6 mm
Depth : 118.5 mm
Antenna Type : Internal
Power Drift-Start : 0.100mv
Power Drift-Finish: 0.095mv
Power Drift (%) : -4.676

Phantom Data

Type : Uni-Phantom
Size : 280mm x 280mm x 200mm
Location : Center

Tissue Data

Type : BODY
Serial No. : 325-B
Frequency : 2450 MHz
Last Calibration Date : 27-May-2004
Temperature : 21.5 °C
Ambient Temp. : 22.3 °C
Humidity : 50 RH%
Epsilon : 51.62 F/m
Sigma : 1.91 S/m
Density : 1000 kg/cu. m

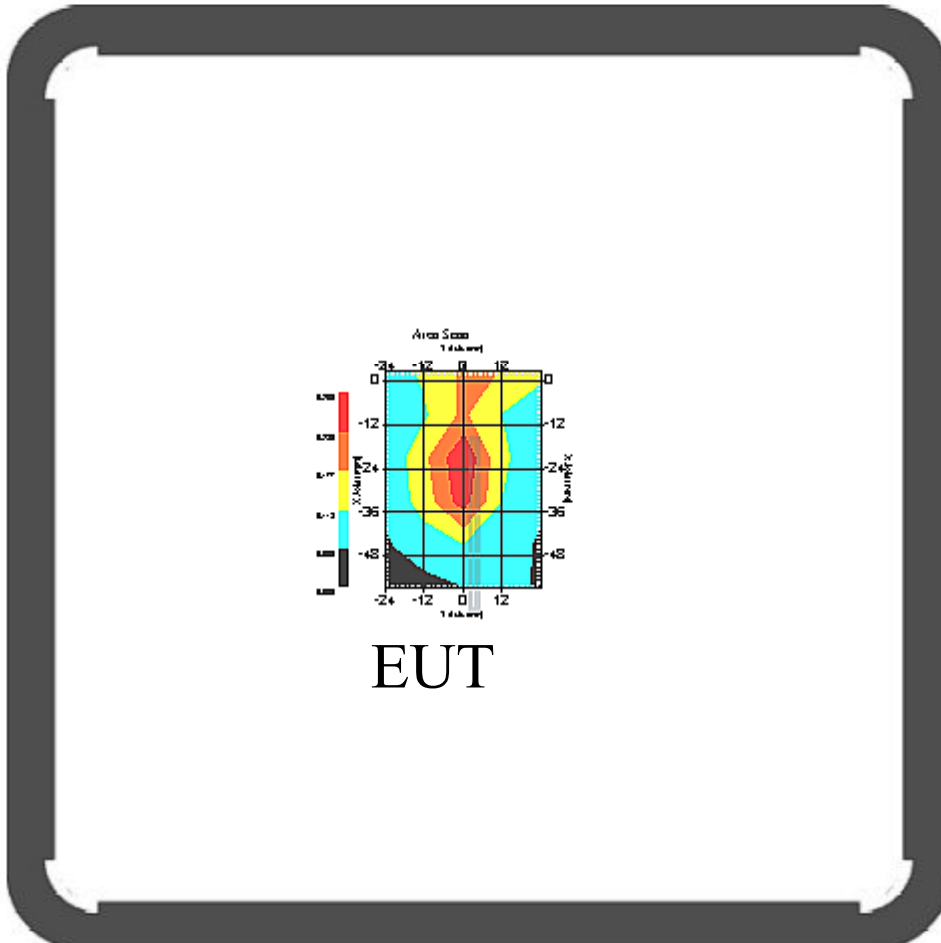
Probe Data

Model : E020
Type : E-Field Triangle
Serial No. : 265
Last Calibration Date : 23-Mar-2005
Frequency : 2450 MHz
Duty Cycle Factor: 1
Conversion Factor: 4.7
Probe Sensitivity: 1.20 1.20 1.20 $\mu\text{V}/(\text{V}/\text{m})^2$
Compression Point: 95 mV
Offset : 1.56mm

Measurement Data

Crest Factor : 1

Channel : 2462



1 gram SAR value : 0.270 W/kg

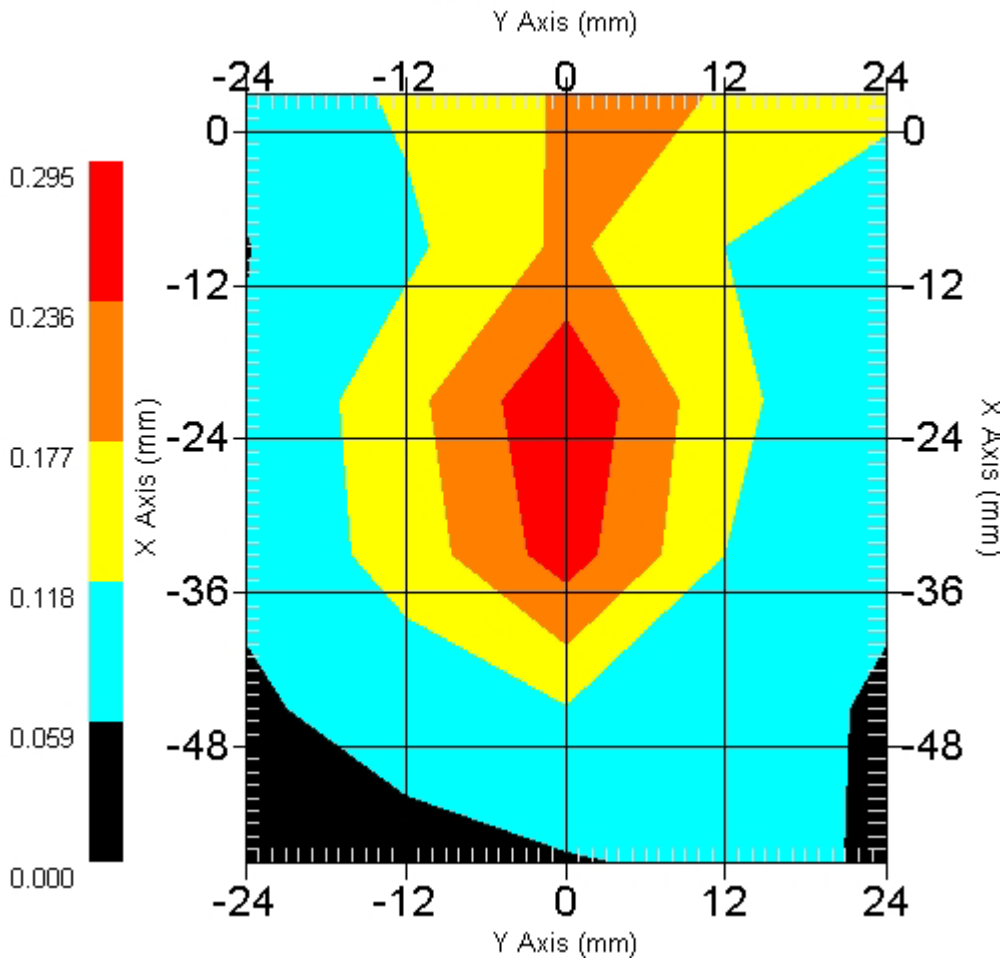
10 gram SAR value : 0.154 W/kg

Area Scan Peak SAR : 0.288

Zoom Scan Peak SAR : 0.490

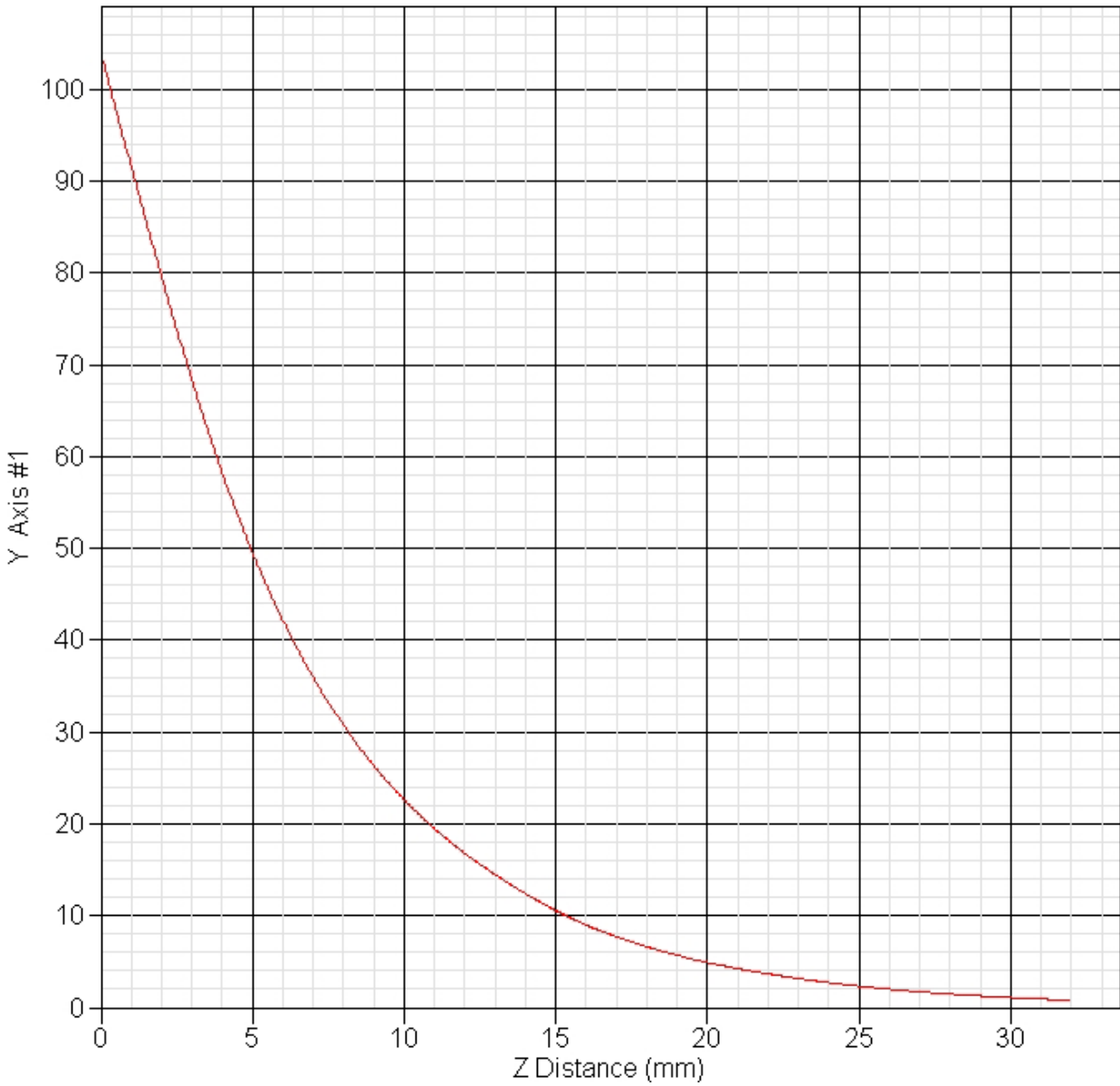
This is previous page plot (zoom in)

Area Scan



SAR System 2450MHz Validation Z-Axis plot (27-May-05)

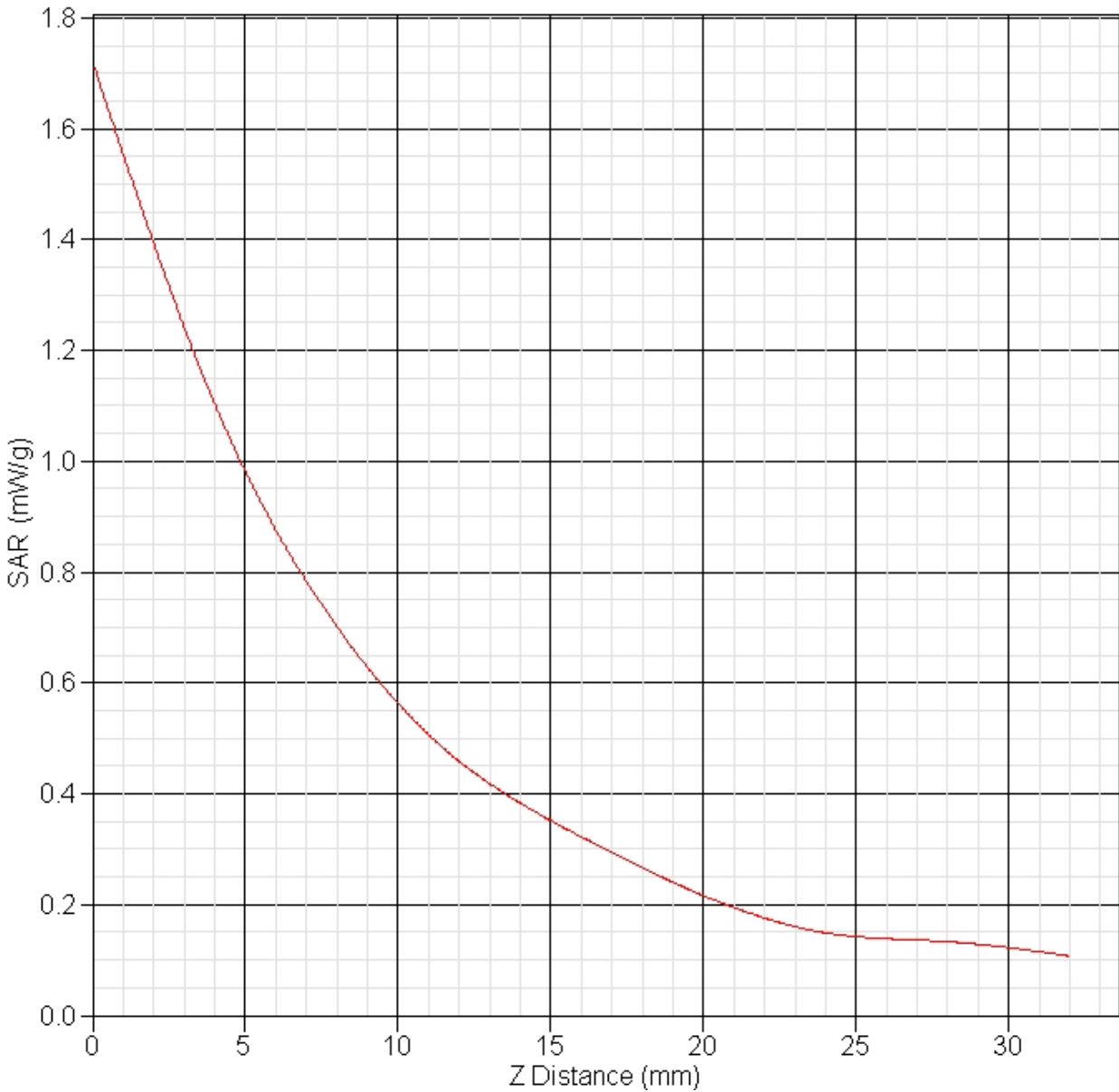
SAR-Z Axis
at Hotspot x:10.00 y:-2.00



EUT 2450MHz SAR test Z-Axis plot

(802.11b, Back, Channel 1)

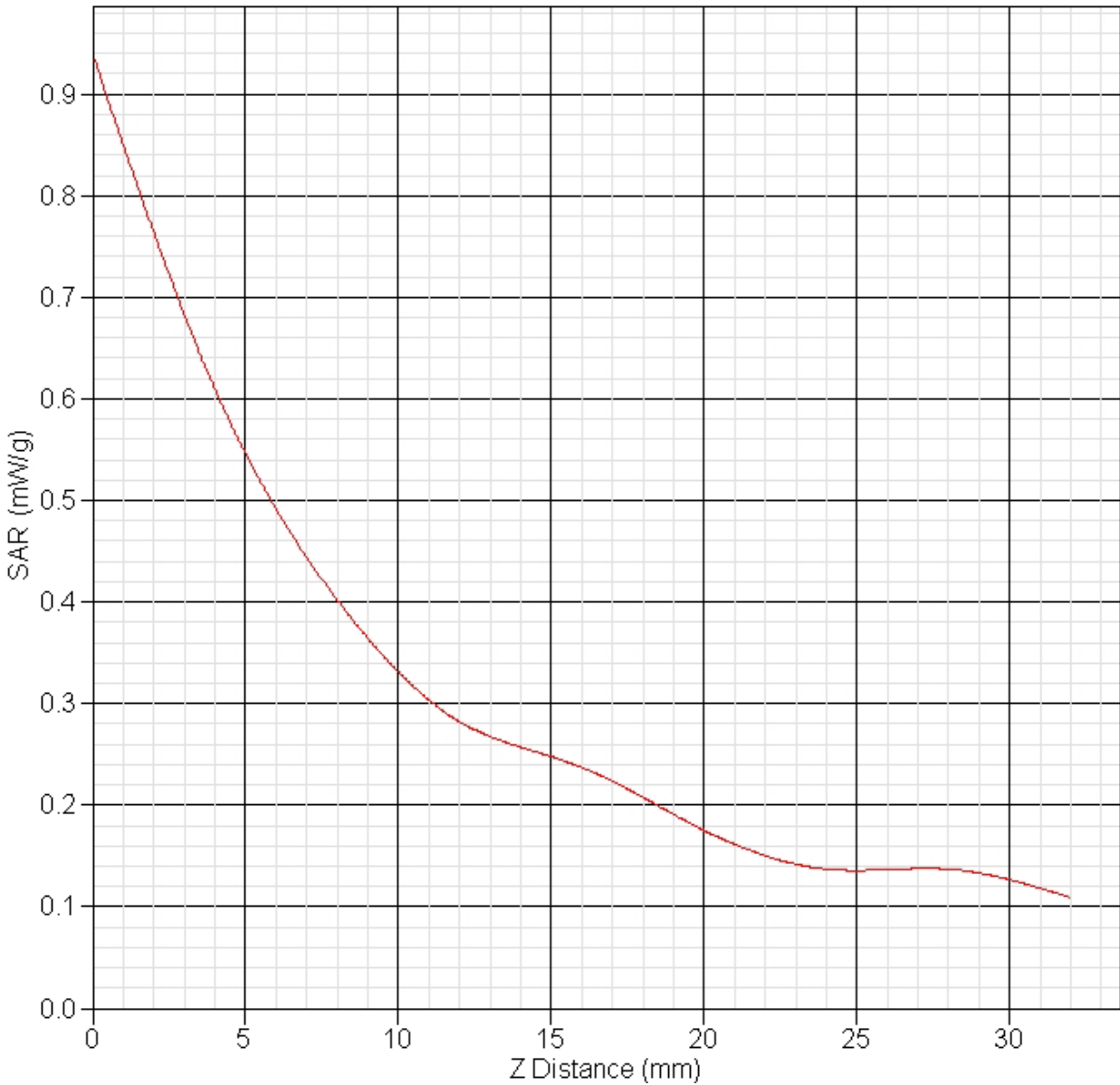
SAR-Z Axis
at Hotspot x:7.1 y:-10.0



EUT 2450MHz SAR test Z-Axis plot

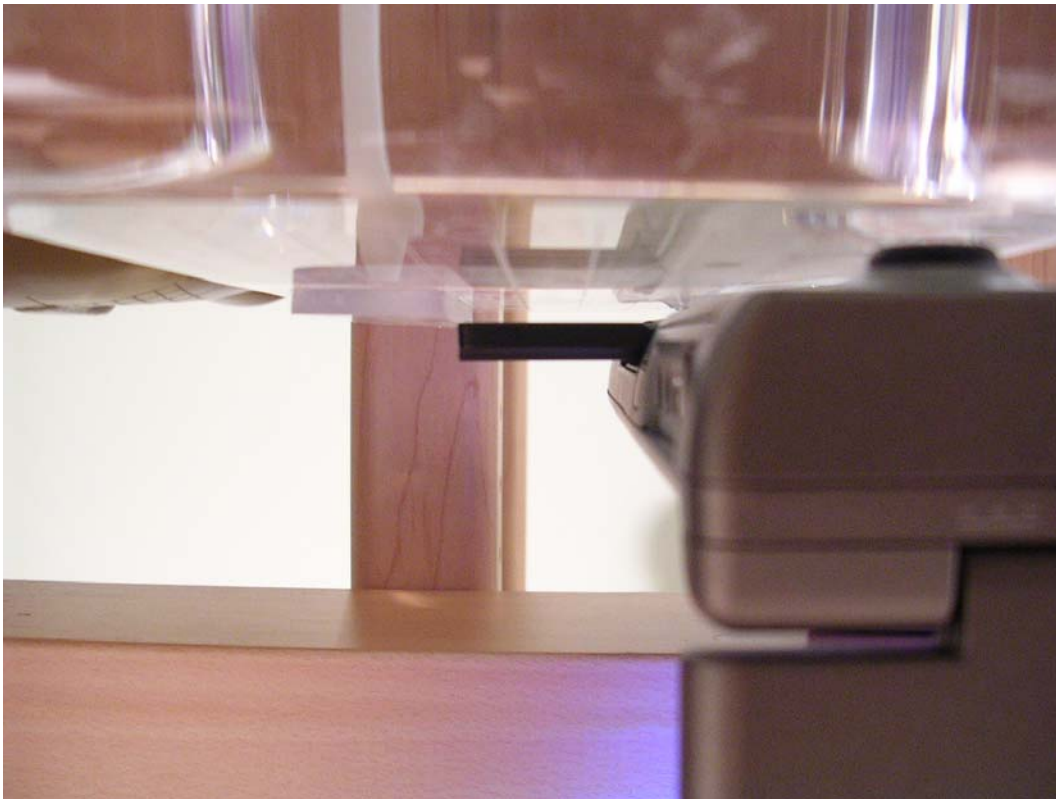
(802.11g, Back, Channel 1)

SAR-Z Axis
at Hotspot x:7.1 y:-10.0

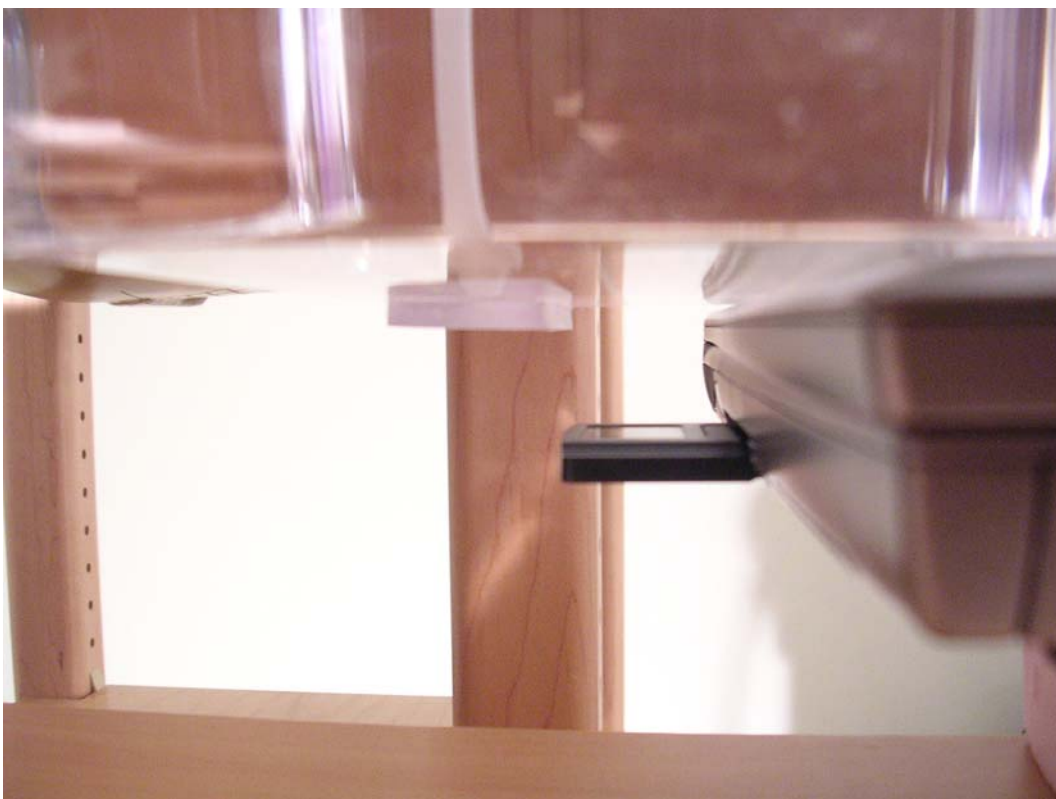


Test Setup Photographs

EUT Back



EUT Front



EUT Top



EUT Photographs



Probe Calibration

NCL CALIBRATION LABORATORIES

Calibration File No.: CP-557

Client: QUIETEK

CERTIFICATE OF CALIBRATION

It is certified that the equipment identified below has been calibrated in the **NCL CALIBRATION LABORATORIES** by qualified personnel following recognized procedures and using transfer standards traceable to NRC/NIST.

Equipment: Miniature Isotropic RF Probe 2450 MHz

Manufacturer: APREL Laboratories

Model No.: ALS-E-020

Serial No.: 265

HEAD Calibration

Calibration Procedure: SSI/DRB-TP-D01-032-E020-V2

Project No: QTKB-ALS-E-020 Probe Cal-5091

Calibrated: 23rd March 2005

Released on: 23rd March 2005

This Calibration Certificate is incomplete unless accompanied with the Calibration Results Summary

Released By: _____

NCL CALIBRATION LABORATORIES

51 SPECTRUM WAY
NEPEAN, ONTARIO
CANADA K2R 1E6

Division of APREL Lab.
TEL: (513) 820-4988
FAX: (513) 820-4161

NCL Calibration Laboratories

Division of APREL Laboratories.

Introduction

This Calibration Report reproduces the results of the calibration performed in line with the SSI/DRB-TP-D01-032-E020-V2 E-Field Probe Calibration Procedure. The results contained within this report are for APREL E-Field Probe E-020 265.

References

SSI/DRB-TP-D01-032-E020-V2 E-Field Probe Calibration Procedure
IEEE 1528 "Recommended Practice for Determining the Peak Spatial-Average Specific Absorption Rate (SAR) in the Human Body Due to Wireless Communications Devices: Experimental Techniques"
SSI-TP-011 Tissue Calibration Procedure

Conditions

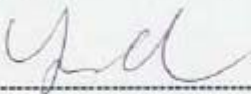
Probe 265 was a new probe taken from stock prior to calibration.

Ambient Temperature of the Laboratory: 22 °C +/- 0.5°C
Temperature of the Tissue: 21 °C +/- 0.5°C

We the undersigned attest that to the best of our knowledge the calibration of this probe has been accurately conducted and that all information contained within this report has been reviewed for accuracy.



Ron Dulmage



Y. Chen

Page 2 of 10
This page has been reviewed for content and attested to on Page 2 of this document.

NCL Calibration Laboratories

Division of APREL Laboratories.

Calibration Results Summary

Probe Type:	E-Field Probe E-020
Serial Number:	265
Frequency:	2450 MHz
Sensor Offset:	1.56 mm
Sensor Length:	2.5 mm
Tip Enclosure:	Ertalyte*
Tip Diameter:	<5 mm
Tip Length:	60 mm
Total Length:	290 mm

*Resistive to recommended tissue recipes per IEEE-1528

Sensitivity in Air

Channel X:	1.2 $\mu\text{V}/(\text{V}/\text{m})^2$
Channel Y:	1.2 $\mu\text{V}/(\text{V}/\text{m})^2$
Channel Z:	1.2 $\mu\text{V}/(\text{V}/\text{m})^2$
Diode Compression Point:	95 mV

Page 3 of 10

This page has been reviewed for content and attested to on Page 2 of this document.

NCL Calibration Laboratories

Division of APREL Laboratories.

Sensitivity in Head Tissue

Frequency: 2450 MHz
Epsilon: 39.2 (+/-5%) **Sigma:** 1.80 S/m (+/-5%)

ConvF

Channel X: 4.6
Channel Y: 4.6
Channel Z: 4.6

Tissue sensitivity values were calculated using the load impedance of the APREL Laboratories Daq-Paq.

Boundary Effect:

Uncertainty resulting from the boundary effect is less than 2% for the distance between the tip of the probe and the tissue boundary, when less than 2.44mm.

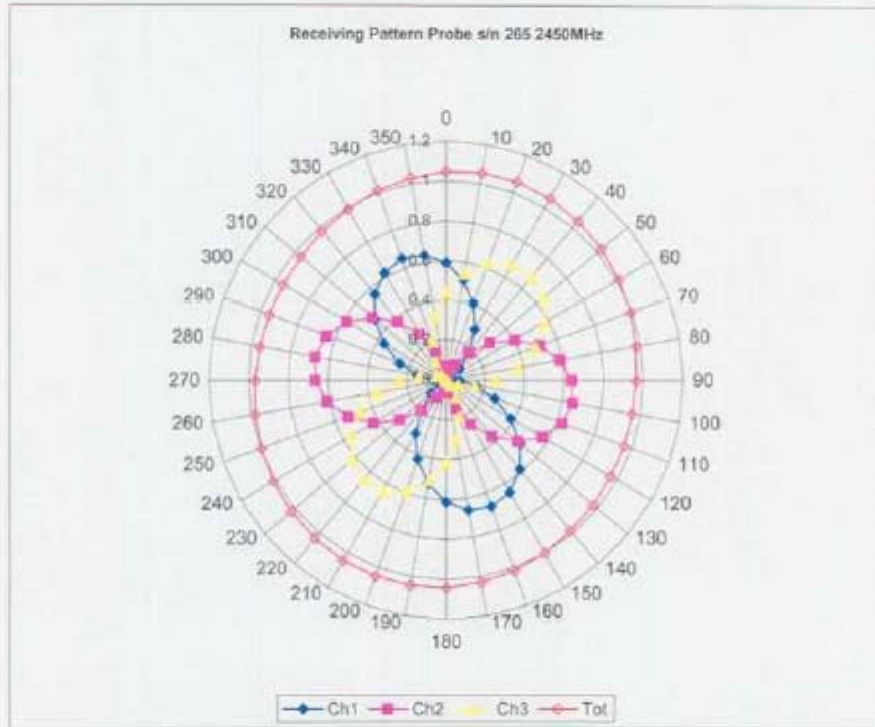
Spatial Resolution:

The measured probe tip diameter is 5 mm (+/- 0.01 mm) and therefore meets the requirements of SSI/DRB-TP-D01-032 for spatial resolution.

Page 4 of 10
 This page has been reviewed for content and attested to on Page 2 of this document.

NCL Calibration Laboratories
Division of APREL Laboratories.

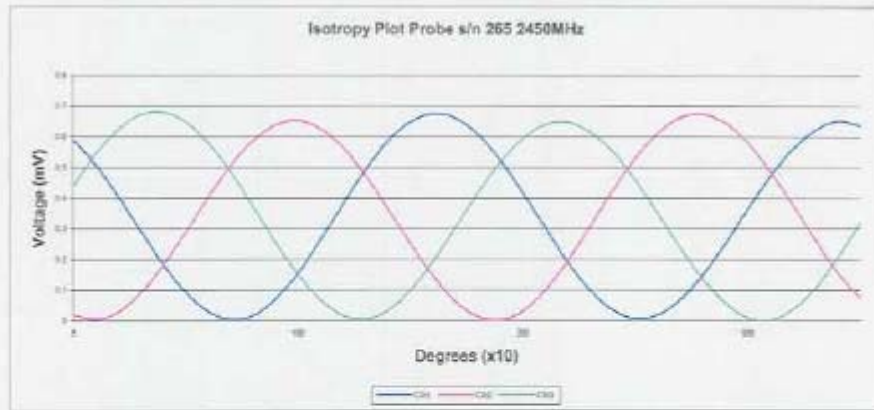
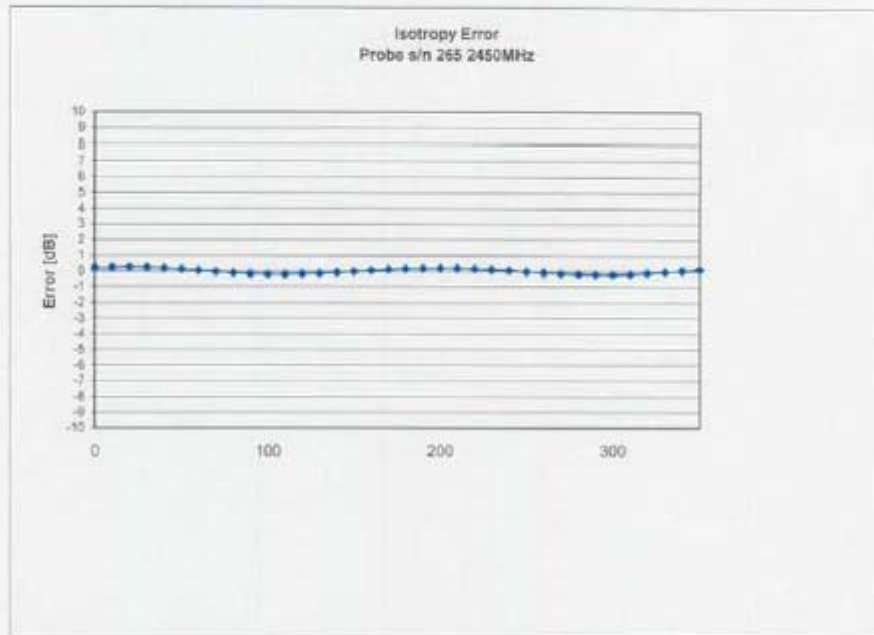
Receiving Pattern 2450 MHz (Air)



Page 5 of 10
This page has been reviewed for content and attested to on Page 2 of this document.

NCL Calibration Laboratories
Division of APREL Laboratories.

Isotropy Error 2450 MHz (Air)

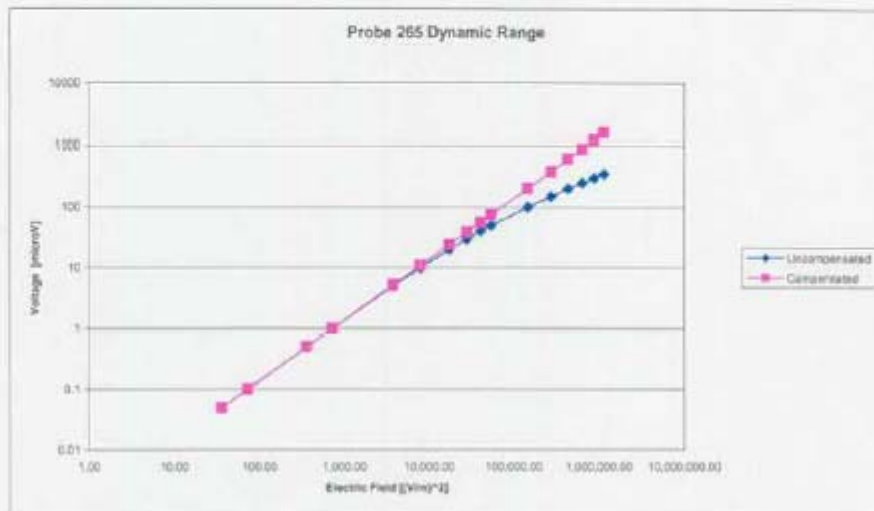


Isotropy in Tissue: 0.10 dB

Page 6 of 10
This page has been reviewed for content and attested to on Page 2 of this document.

NCL Calibration Laboratories
Division of APREL Laboratories.

Dynamic Range

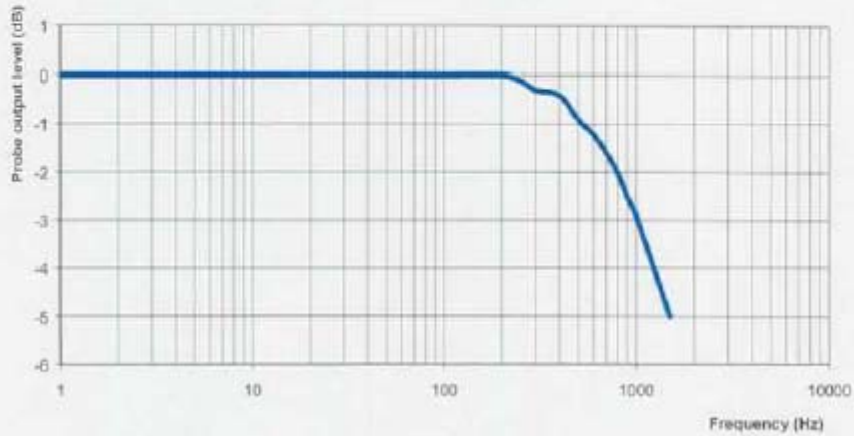


Page 7 of 10
This page has been reviewed for content and attested to on Page 2 of this document.

NCL Calibration Laboratories
Division of APREL Laboratories.

Video Bandwidth

Probe Frequency Characteristics



Video Bandwidth at 500 Hz 1 dB
Video Bandwidth at 1000 Hz 3 dB

NCL Calibration Laboratories
 Division of APREL Laboratories.

Conversion Factor Uncertainty Assessment

Frequency:		2450MHz	
Epsilon:	39.2 (+/-5%)	Sigma:	1.80 S/m (+/-5%)
ConvF			
Channel X:	4.6		7%(K=2)
Channel Y:	4.6		7%(K=2)
Channel Z:	4.6		7%(K=2)

To minimize the uncertainty calculation all tissue sensitivity values were calculated using a load impedance of 5 MΩ.

Boundary Effect:

For a distance of 2.4mm the evaluated uncertainty (increase in the probe sensitivity) is less than 2%.

Page 9 of 10
 This page has been reviewed for content and attested to on Page 2 of this document.

NCL Calibration Laboratories

Division of APREL Laboratories.

Test Equipment

The test equipment used during Probe Calibration, manufacturer, model number and, current calibration status are listed and located on the main APREL server R:\NCL\Calibration Equipment\Instrument List May 2004.

Page 10 of 10

This page has been reviewed for content and attested to on Page 2 of this document.

NCL CALIBRATION LABORATORIES

Calibration File No.: CP-558

Client: QUIETEK

CERTIFICATE OF CALIBRATION

It is certified that the equipment identified below has been calibrated in the **NCL CALIBRATION LABORATORIES** by qualified personnel following recognized procedures and using transfer standards traceable to NRC/NIST.

Equipment: Miniature Isotropic RF Probe 2450 MHz

Manufacturer: APREL Laboratories

Model No.: ALS-E-020

Serial No.: 205

BODY Calibration

Calibration Procedure: SSII/DRB-TP-D01-032-E020-V2

Project No: QTKB-ALS-E-020 Probe Cal-5091

Calibrated: 23rd March 2005Released on: 23rd March 2005

This Calibration Certificate is Incomplete Unless Accompanied with the Calibration Results Summary

Released By: _____

NCL CALIBRATION LABORATORIES51 SPECTRUM WAY
NEPEAN, ONTARIO
CANADA K2R 1E6Division of APREL Lab.
TEL: (613) 820-6958
FAX: (613) 820-4101

NCL Calibration Laboratories

Division of APREL Laboratories.

Introduction

This Calibration Report reproduces the results of the calibration performed in line with the SSI/DRB-TP-D01-032-E020-V2 E-Field Probe Calibration Procedure. The results contained within this report are for APREL E-Field Probe E-020 265.

References

SSI/DRB-TP-D01-032-E020-V2 E-Field Probe Calibration Procedure
IEEE 1528 "Recommended Practice for Determining the Peak Spatial-Average Specific Absorption Rate (SAR) in the Human Body Due to Wireless Communications Devices: Experimental Techniques"
SSI-TP-011 Tissue Calibration Procedure

Conditions

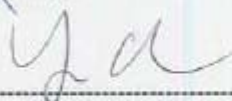
Probe 265 was a new probe taken from stock prior to calibration.

Ambient Temperature of the Laboratory: 22 °C +/- 0.5°C
Temperature of the Tissue: 21 °C +/- 0.5°C

We the undersigned attest that to the best of our knowledge the calibration of this probe has been accurately conducted and that all information contained within this report has been reviewed for accuracy.



Ron Dulmage



Y. Chen

Page 2 of 10
This page has been reviewed for content and attested to on Page 2 of this document.

NCL Calibration Laboratories

Division of APREL Laboratories.

Calibration Results Summary

Probe Type:	E-Field Probe E-020
Serial Number:	265
Frequency:	2450 MHz
Sensor Offset:	1.56 mm
Sensor Length:	2.5 mm
Tip Enclosure:	Ertalyte*
Tip Diameter:	<5 mm
Tip Length:	60 mm
Total Length:	290 mm

*Resistive to recommended tissue recipes per IEEE-1528

Sensitivity in Air

Channel X:	1.2 $\mu\text{V}/(\text{V}/\text{m})^2$
Channel Y:	1.2 $\mu\text{V}/(\text{V}/\text{m})^2$
Channel Z:	1.2 $\mu\text{V}/(\text{V}/\text{m})^2$
Diode Compression Point:	95 mV

Page 3 of 10

This page has been reviewed for content and attested to on Page 2 of this document.

NCL Calibration Laboratories

Division of APREL Laboratories.

Sensitivity in Body Tissue

Frequency: 2450 MHz

Epsilon: 52.7 (+/-5%) **Sigma:** 1.95 S/m (+/-5%)

ConvF

Channel X: 4.7

Channel Y: 4.7

Channel Z: 4.7

Tissue sensitivity values were calculated using the load impedance of the APREL Laboratories Daq-Paq.

Boundary Effect:

Uncertainty resulting from the boundary effect is less than 2% for the distance between the tip of the probe and the tissue boundary, when less than 2.44mm.

Spatial Resolution:

The measured probe tip diameter is 5 mm (+/- 0.01 mm) and therefore meets the requirements of SSI/DRB-TP-D01-032 for spatial resolution.

Page 4 of 10

This page has been reviewed for content and attested to on Page 2 of this document.

NCL Calibration Laboratories
Division of APREL Laboratories

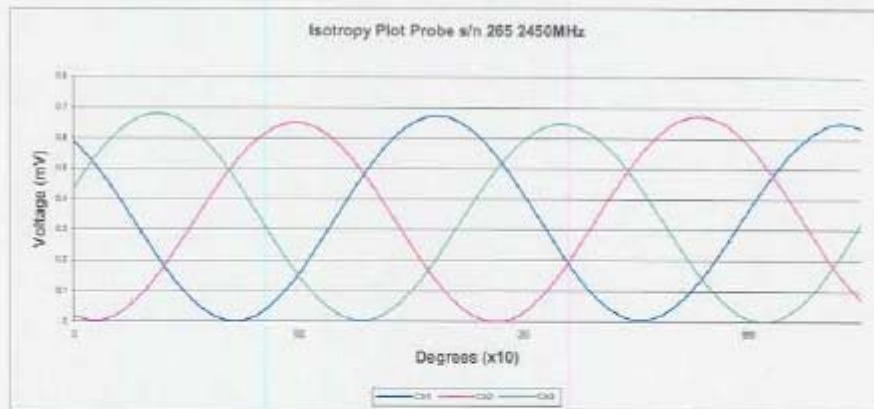
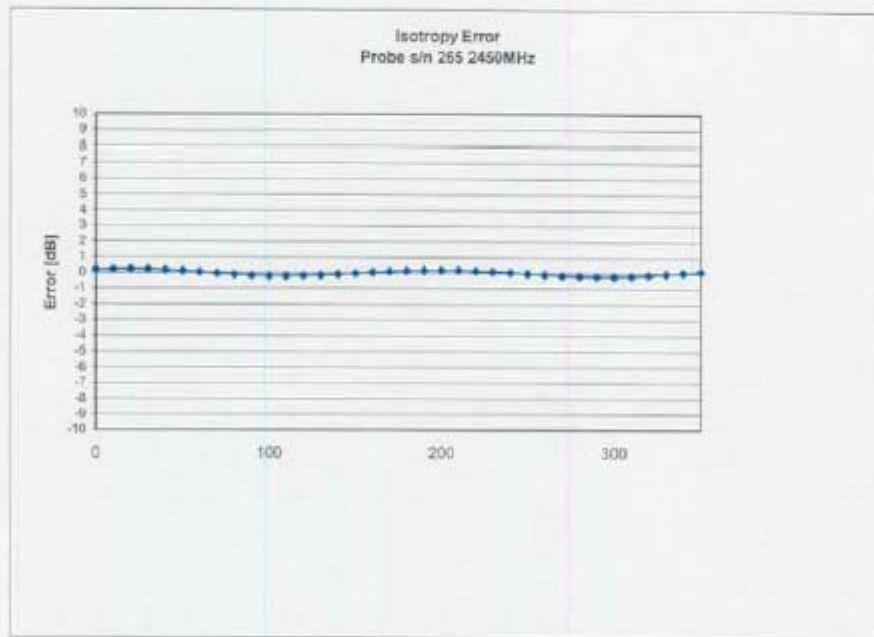
Receiving Pattern 2450 MHz (Air)



Page 5 of 10
This page has been reviewed for content and attested to on Page 2 of this document.

NCL Calibration Laboratories
Division of APREL Laboratories

Isotropy Error 2450 MHz (Air)

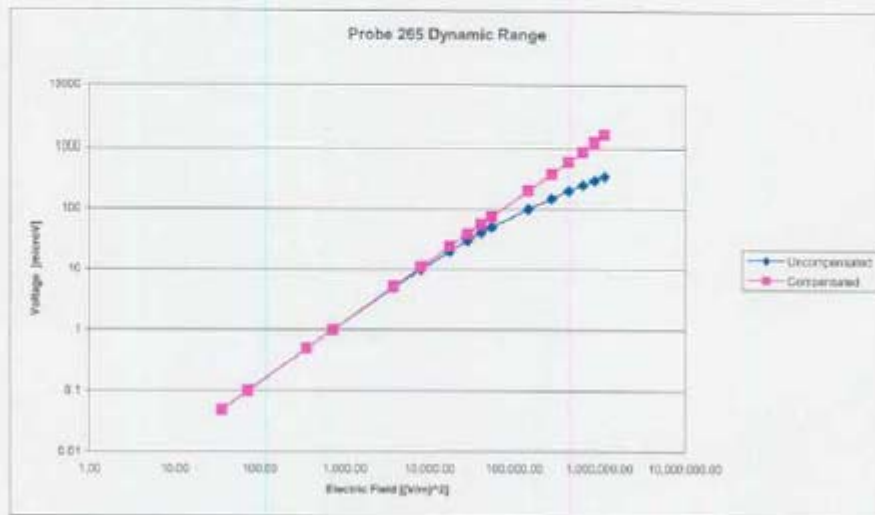


Isotropicity in Tissue: 0.10 dB

Page 6 of 10
This page has been reviewed for content and attested to on Page 2 of this document.

NCL Calibration Laboratories
Division of APREL Laboratories.

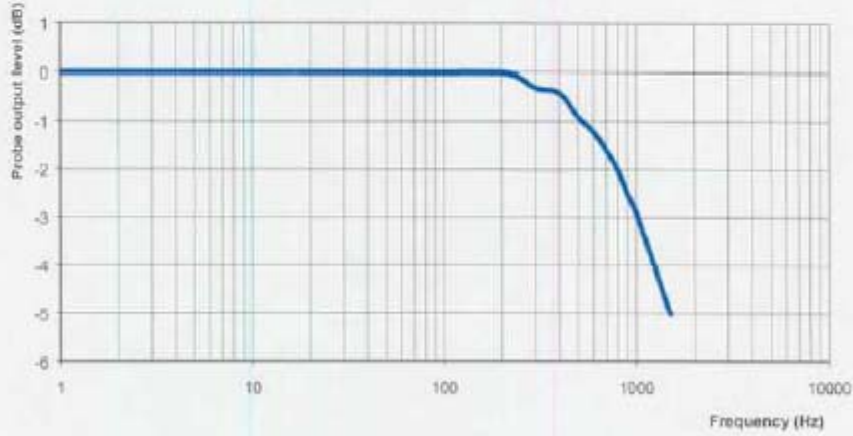
Dynamic Range



NCL Calibration Laboratories
Division of APREL Laboratories.

Video Bandwidth

Probe Frequency Characteristics



Video Bandwidth at 500 Hz 1 dB
Video Bandwidth at 1000 Hz 3 dB

Page 8 of 10
This page has been reviewed for content and attested to on Page 2 of this document.

NCL Calibration Laboratories

Division of APREL Laboratories.

Conversion Factor Uncertainty Assessment

Frequency: 2450MHz
 Epsilon: 52.7 (+/-5%) Sigma: 1.95 S/m (+/-5%)

ConvF

Channel X: 4.7 7%(K=2)
 Channel Y: 4.7 7%(K=2)
 Channel Z: 4.7 7%(K=2)

To minimize the uncertainty calculation all tissue sensitivity values were calculated using a load impedance of 5 MΩ.

Boundary Effect:

For a distance of 2.4mm the evaluated uncertainty (increase in the probe sensitivity) is less than 2%.

NCL Calibration Laboratories

Division of APREL Laboratories.

Test Equipment

The test equipment used during Probe Calibration, manufacturer, model number and, current calibration status are listed and located on the main APREL server R:\NCL\Calibration Equipment\Instrument List May 2004.

Page 10 of 10

This page has been reviewed for content and attested to on Page 2 of this document.

Dipole Calibration

NCL CALIBRATION LABORATORIES

Calibration File No: DC-409
Project Number: QTKB-ALSAS-10U-5050

CERTIFICATE OF CALIBRATION

It is certified that the equipment identified below has been calibrated in the **NCL CALIBRATION LABORATORIES** by qualified personnel following recognized procedures and using transfer standards traceable to NRC/NIST.

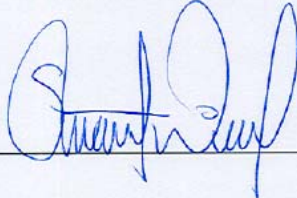
Quietek Validation Dipole

Manufacturer: APREL Laboratories
Part number: ALS-D-2450-S-2
Frequency: 2.45 GHz
Serial No: QTK-319

Customer: Quietek

Calibrated: 23 June 2004
Released on: 23 June 2004

Released By: _____



NCL CALIBRATION LABORATORIES

51 SPECTRUM WAY
NEPEAN, ONTARIO
CANADA K2R 1E6

Division of APREL Lab.
TEL: (613) 820-4988
FAX: (613) 820-4181

NCL Calibration Laboratories
Division of APREL Laboratories.

Calibration Results Summary

The following results relate the Calibrated Dipole and should be used as a quick reference for the user.

Mechanical Dimensions

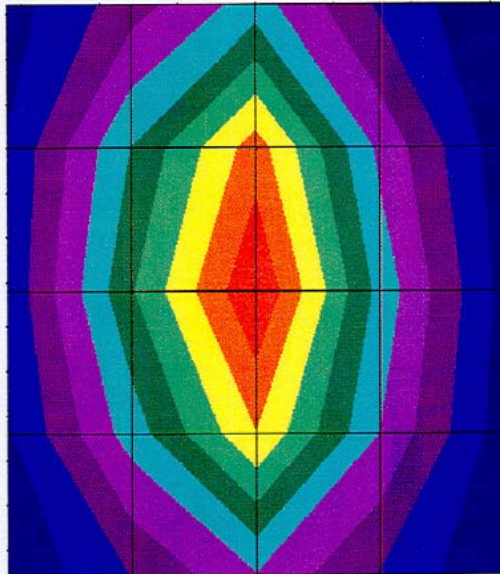
Length: 53.5 mm
Height: 30.4 mm

Electrical Specification

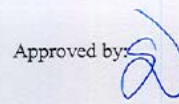
SWR: 1.19 U
Return Loss: -20.8 dB
Impedance: 49.4 Ω

System Validation Results

Frequency	1 Gram	10 Gram	Peak
2.45 GHz	48.07	25.65	95.6



Calibrated by 

Approved by 

NCL Calibration Laboratories

Division of APREL Laboratories.

Introduction

This Calibration Report has been produced in line with the SSI Dipole Calibration Procedure SSI-TP-018-ALSAS. The results contained within this report are for Validation Dipole QTK-319. The calibration routine consisted of a three-step process. Step 1 was a mechanical verification of the dipole to ensure that it meets the IEEE/APREL mechanical specifications. Step 2 was an Electrical Calibration for the Validation Dipole, where the SWR, Impedance, and the Return loss were assessed. Step 3 involved a System Validation using the ALSAS-10U, along with QTK E-020 130 MHz to 26 GHz E-Field Probe Serial Number 212.

References

SSI-TP-018-ALSAS Dipole Calibration Procedure
 SSI-TP-016 Tissue Calibration Procedure
 IEEE 1528 "Recommended Practice for Determining the Peak Spatial-Average Specific Absorption Rate (SAR) in the Human Body Due to Wireless Communications Devices: Experimental Techniques"

Conditions

Dipole QTK-319 was new taken from stock.

Ambient Temperature of the Laboratory: 22 °C +/- 0.5°C
Temperature of the Tissue: 20 °C +/- 0.5°C

NCL Calibration Laboratories

Division of APREL Laboratories.

Dipole Calibration Results

Mechanical Verification

IEEE Length	IEEE Height	Measured Length	Measured Height
51.5 mm	30.4 mm	53.5 mm	30.4 mm

Tissue Validation

Body Tissue 2450 MHz	Measured
Dielectric constant, ϵ_r	52.5
Conductivity, σ [S/m]	1.78

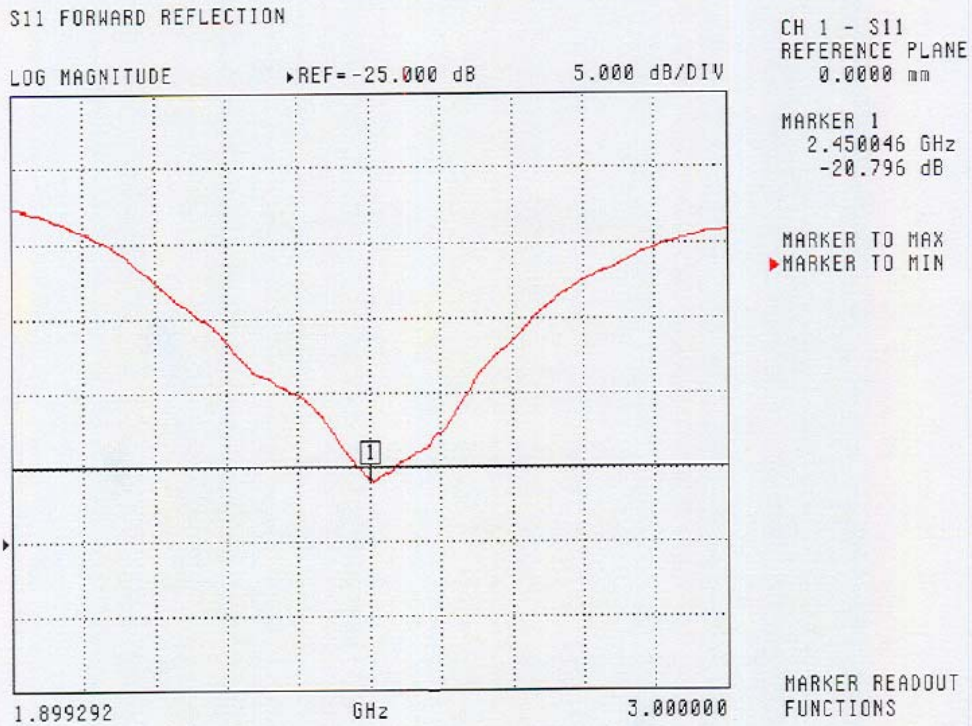
NCL Calibration Laboratories
 Division of APREL Laboratories.

Electrical Calibration

Test	Result
S11 R/L	-20.8 dB
SWR	1.2 U
Impedance	49.4 Ω

The Following Graphs are the results as displayed on the Vector Network Analyzer.

S11 Parameter Return Loss



NCL Calibration Laboratories

Division of APREL Laboratories.

SWR

S11 FORWARD REFLECTION

SWR REF=500.000 mU 1.000 U/DIV



CH 1 - S11
REFERENCE PLANE
0.0000 mm

MARKER 1
2.450046 GHz
1.199 U

MARKER TO MAX
▶ MARKER TO MIN

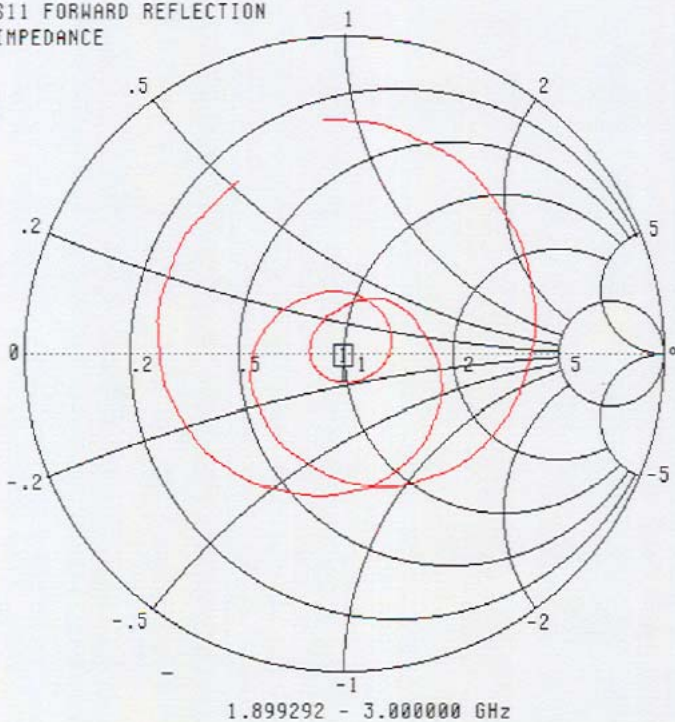
MARKER READOUT
FUNCTIONS

NCL Calibration Laboratories

Division of APREL Laboratories.

Smith Chart Dipole Impedance

S11 FORWARD REFLECTION
IMPEDANCE



CH 1 - S11
REFERENCE PLANE
0.0000 mm

MARKER 1
2.450046 GHz
49.365 Ω
-9.232 $j\Omega$

MARKER TO MAX
▶ MARKER TO MIN

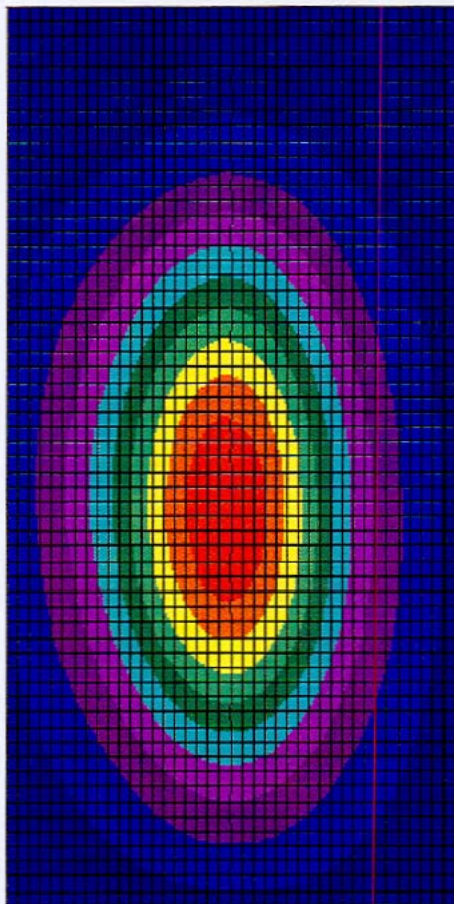
MARKER READOUT
FUNCTIONS

NCL Calibration Laboratories

Division of APREL Laboratories.

System Validation Results Using the Electrically Calibrated Dipole

Frequency	1 Gram	10 Gram	Peak Above Feed Point
2.45 GHz	48.07	25.65	95.6



NCL Calibration Laboratories

Division of APREL Laboratories.

Test Equipment

The test equipment used during Probe Calibration, manufacturer, model number and, current calibration status are listed and located on the main APREL server R:\NCL\Calibration Equipment\Instrument List May 2003