

IP5446M WiFi Router



Quick Start Guide

P/N: 957DVS00SV Document Version: 1.0
Copyright 2023. All Rights Reserved.
All trademarks and trade names are the properties of their respective owners

Package Contents

The following items are included in the box:

1. IP5446M
2. Quick Start Guide



3. Power adapter

4. WiFi credential card



5. Product label



Chapter 1 Introduction

1

This chapter provides details of the IP5446M's features and capabilities.

Overview

The IP5446M is a high-performance, full-featured WiFi router with premium 802.11ax, as known as WiFi 6. It is powered by 2.4GHz and 5GHz 4x4 radio. Wi-Fi 6 routers offer improved speed, capacity, latency, and efficiency, making them a great choice for homes and offices with multiple devices and high-demand networking needs. Faster speeds: Wi-Fi 6 routers provide faster wireless speeds compared to previous generations. They can achieve multi-gigabit data transfer rates, enabling smoother streaming, faster downloads, and improved overall network performance.

Features

- 2.5Gbps WAN port (1*Blue RJ45)
- 1.0Gbps LAN ports (3*Yellow RJ45)
- USB port
- Reset Button
- WPS Button
- 12VDC Power Adapter

Wireless

Supports 11ac WiFi: 802.11ac is backwards compatible with 802.11a/b/g/n
WPS Support: WPS (WiFi Protected Setup) simplifies the process of connecting any device to the wireless network by using the push button on the device
Security Support: WPA2, WPA, and WPA+WPA2 mixed mode are supported for advanced encryption of all WiFi data

Chapter 2 Basic Setup




2

This chapter provides details on how to setup the IP5446M

Front Panel




Figure 1: Front Panel

1.Power/WAN (Green/Red) 	Solid Red - No Internet. Solid Green - Internet connection is available. Blinking Red and Green - FW upgrade in-progress Off - No power
2. WiFi/ WPS LED (Blue/Green) 	Solid Green - WiFi enabled Off - WiFi disabled Slow Blinking Blue - WPS is pairing. When WPS button is pressed, the LED will blink for 2 minutes. Solid Blue - WPS failure. The LED will stay on for 10 seconds and then turn off. Fast Blinking Blue-WPS success. The LED will blink quickly for 10 seconds, then turn off.
3. LAN LED (Green) 	Solid Green - LAN Ethernet cable connected Off - LAN Ethernet cable is not connected Blinking Green - Active LAN Ethernet traffic

Back Panel



Figure 2: Back Panel

1. LAN Ports 1Gbps (Yellow)	Connect to a PC or other Ethernet device using a standard Ethernet cable.
2. WAN Port 2.5Gbps (Blue)	Connect to a cable modem or PON using a standard Ethernet cable.
3. Reset Button	This button is recessed; a pin or paper clip can be used to press it. The button can be used while the unit is powered and the power LED is Green. <ul style="list-style-type: none"> • Reset to manufacturer default values and reboot. When pressed and held over 7 seconds, the settings of the IP5446M will be set to their default values. • Reboot. When pressed and held over 2 seconds and less than 5 seconds, the IP5446M will reboot.
4.USB Port	Power charging for smart phone or pad.
5. Power Jack	Find power adapter in the package. <ul style="list-style-type: none"> • Insert the power adapter unit into the power outlet first. Then connect the power adapter with device via power connector and power jack.
6. WPS Button 	Push the WPS button on the router and on your other WiFi device to perform WPS function that easily creates an encryption-secured WiFi connection automatically.

Setup the IP5446M

Setting up the IP5446M is simple. Power up the IP5446M with the provided power supply and connect the WAN port (Blue) to your modem with a standard Ethernet cable. By default, the IP5446M uses the pre-configured WiFi SSID and password match what is shown on your WiFi Credential Card and the label.

If you have fiber service at home, the unit will be ready to use without any additional configuration. If you have another type of Internet service, follow the instructions shown below to change the WAN setting to *DHCP*.

If you would like to set a custom WiFi SSID and password, you can also use the IP5446M local web page and follow the steps below.

Setup Using Web Browser



Step 1: Make sure your modem is on and working properly.

Step 2: Connect the IP5446M WAN port (Blue) with your modem with a standard Ethernet cable.

Step 3: Connect an Ethernet cable to an IP5446M LAN port and your PC.

Step 4: Launch the browser and enter <http://192.168.1.1> in the address box.

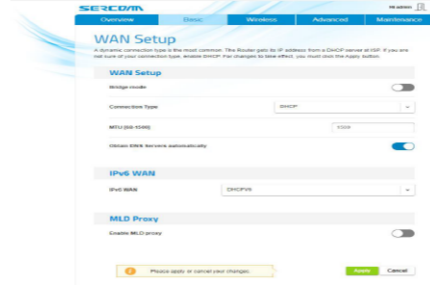
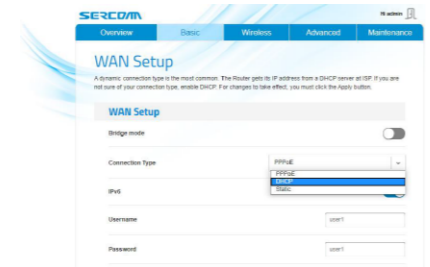
Step 5: You will be prompted for a username and password. Locate the included IP5446M Credential Card. Use *admin* for the default username. The device specific password can be found by scanning the QR code on the included WiFi Credential Card or on the IP5446M label (shown as the WPS PIN). The password can be changed after device setup.



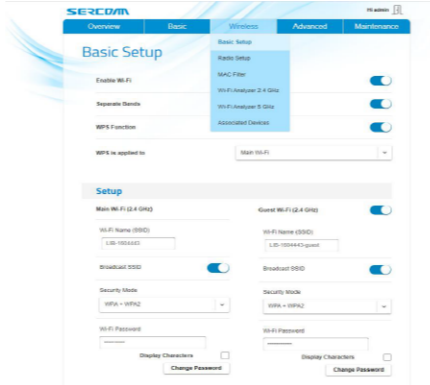
Step 6: Choose the *Basic* page, click *WAN Setup*, to configure your WAN settings.



Step 7: The default *Connection Type* is PPPoE for Internet service over fiber. For other type of services, select DHCP and click Apply.



Step 8: To change the WiFi SSID and password, select the *Wireless* page, click *Basic Setup*, then go to the Setup menu and change the SSID and password. When you are finished, click Apply to save your changes.



Chapter 3 Safety

This chapter provides you some safety operation warnings.

1. Use the power supply adapter provided in the package only. Using any other adapters may cause damage to the equipment or result in operation failures.
2. The electrical load capacity of the socket and cables should meet the device's requirement. Power socket overload, broken cables or broken plugs may cause electric shock or fire. Check the power supply wires and cables regularly.
3. Install the equipment in a well-ventilated environment. Avoid areas with high temperature or direct sunlight to protect the equipment and its components from overheating.
4. Do not place this equipment in a draft or moist place.
5. Do not lay this equipment on an unsteady base.

3

Appendix A Regulatory

A

FCC Statement

This equipment generates, uses, and can radiate radio frequency energy and, if not installed and used in accordance with the instructions, may cause harmful interference to radio communications. However, there is no guarantee that interference will not occur in a particular installation. If this equipment does cause harmful interference to radio or television reception, which can be determined by turning the equipment off and on, the user is encouraged to try to correct the interference by one of the following measures:

Reorient or relocate the receiving antenna.

Increase the separation between the equipment and receiver.

Connect the equipment into an outlet on a circuit different from that to which the receiver is connected.

Consult the dealer or an experienced radio/TV technician for help.

To assure continued compliance, any changes or modifications not expressly approved by the party responsible for compliance could void the user's authority to operate this equipment. (Example - use only shielded interface cables when connecting to computer or peripheral devices).

FCC Radiation Exposure Statement

This equipment complies with FCC RF radiation exposure limits set forth for an uncontrolled environment. This equipment should be installed and operated with a minimum distance of 24 centimeters between the radiator and your body.

This device complies with Part 15 of the FCC Rules. Operation is subject to the following two conditions:

- (1) This device may not cause harmful interference, and
- (2) This device must accept any interference received, including interference that may cause undesired operation.

This transmitter must not be co-located or operating in conjunction with any other antenna or transmitter.

Country Code selection feature to be disabled for products marketed to the US/CANADA

Operation of this device is restricted to indoor use only