

Figure 5
Component Side of the PCB



Figure 6
Component Side of the PCB

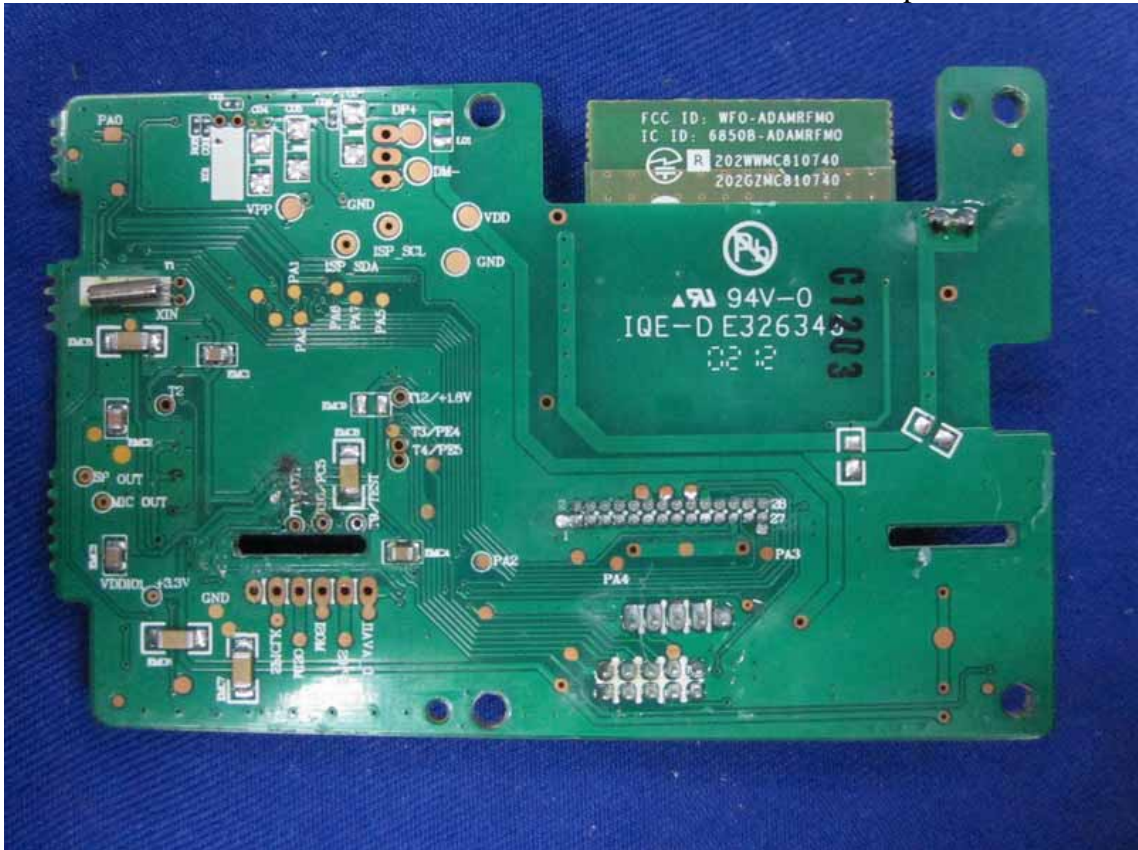


Figure 7
Component Side of the PCB

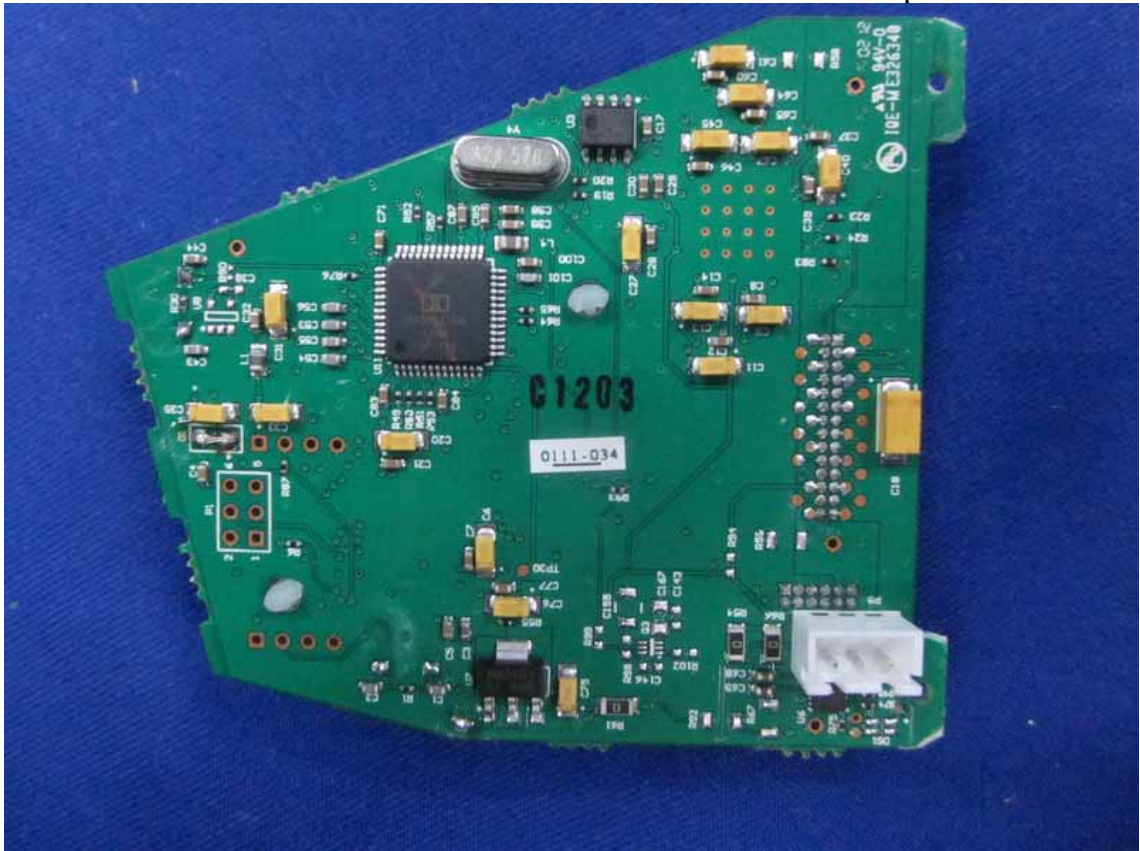


Figure 8
Component Side of the PCB



Figure 9
Component Side of the PCB

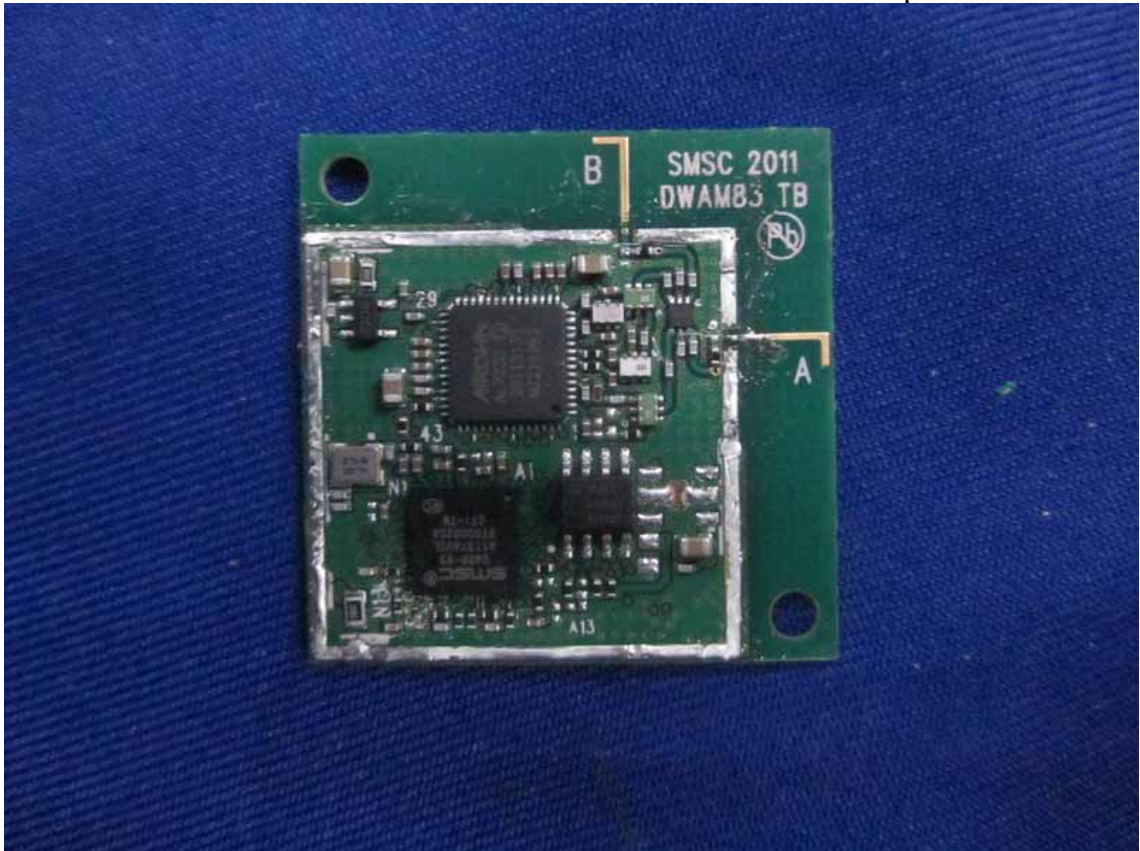


Figure 10
Component Side of the PCB



Figure 11
Component Side of the PCB



Figure 12
Component Side of the PCB

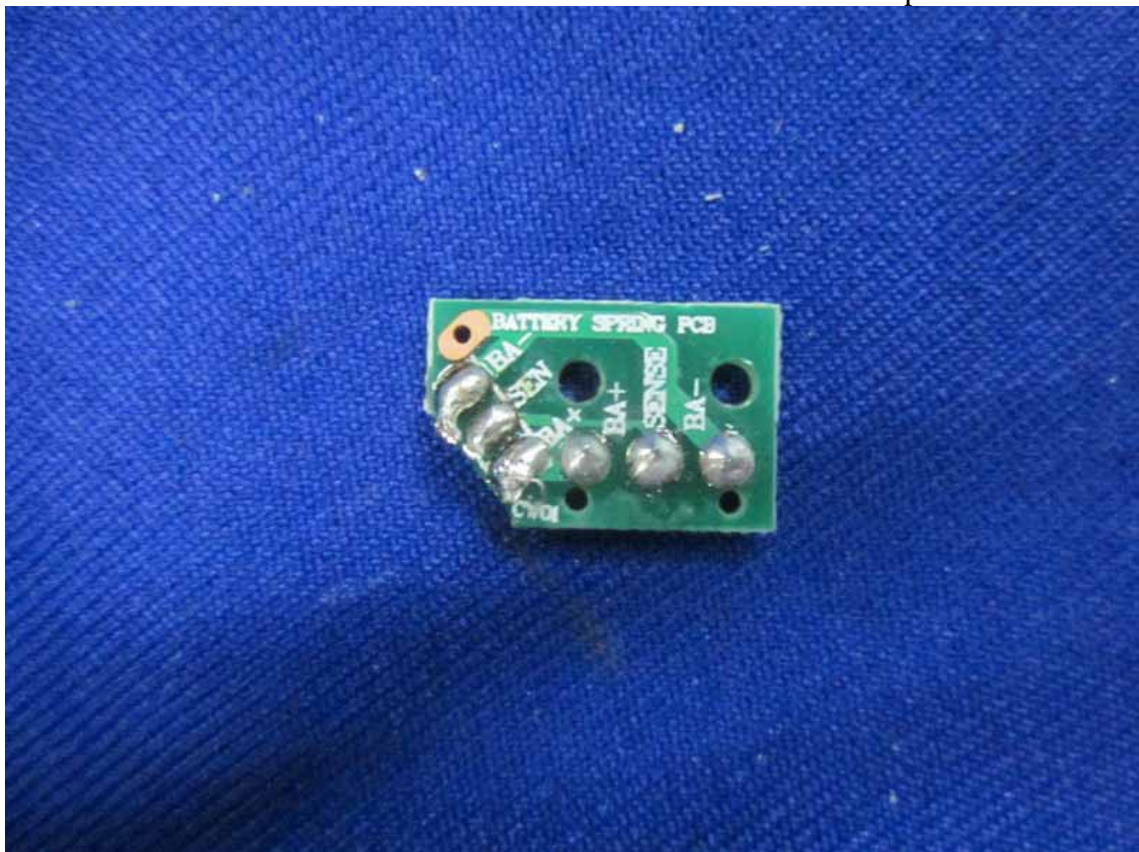


Figure 13
Component Side of the PCB

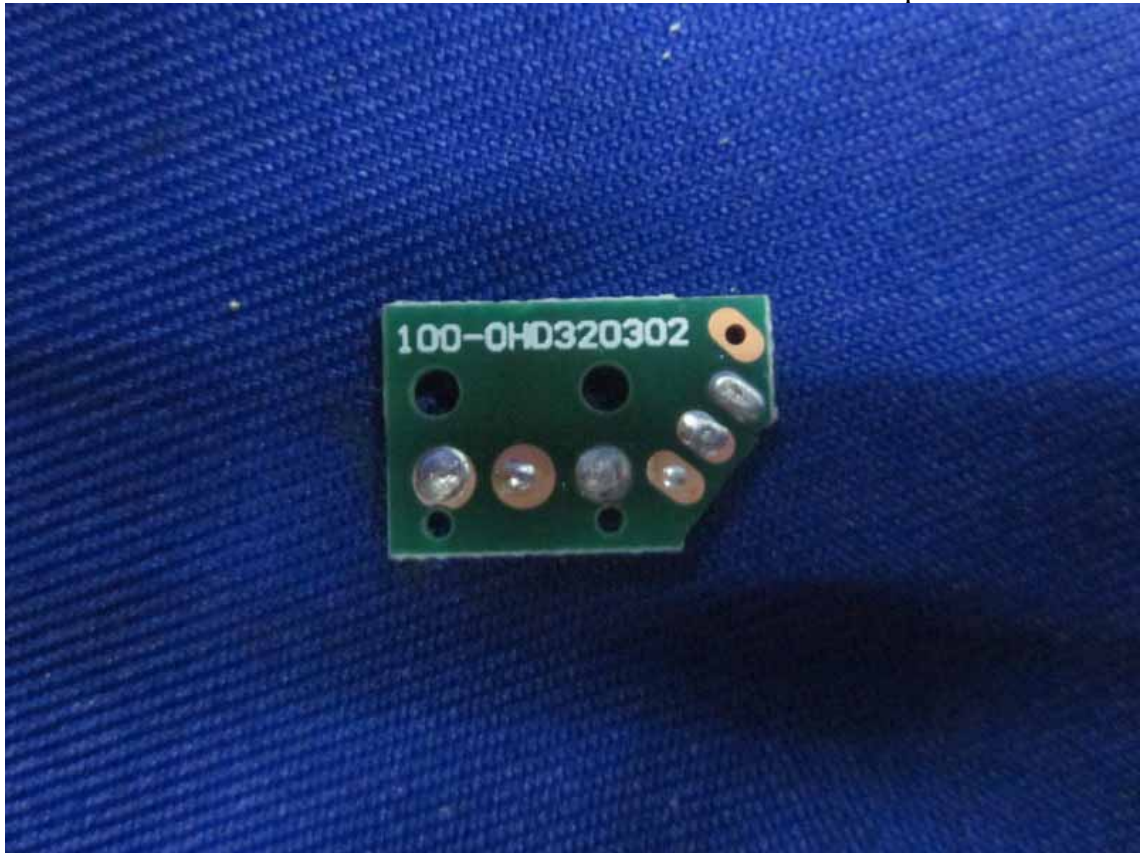


Figure 14
Component Side of the PCB

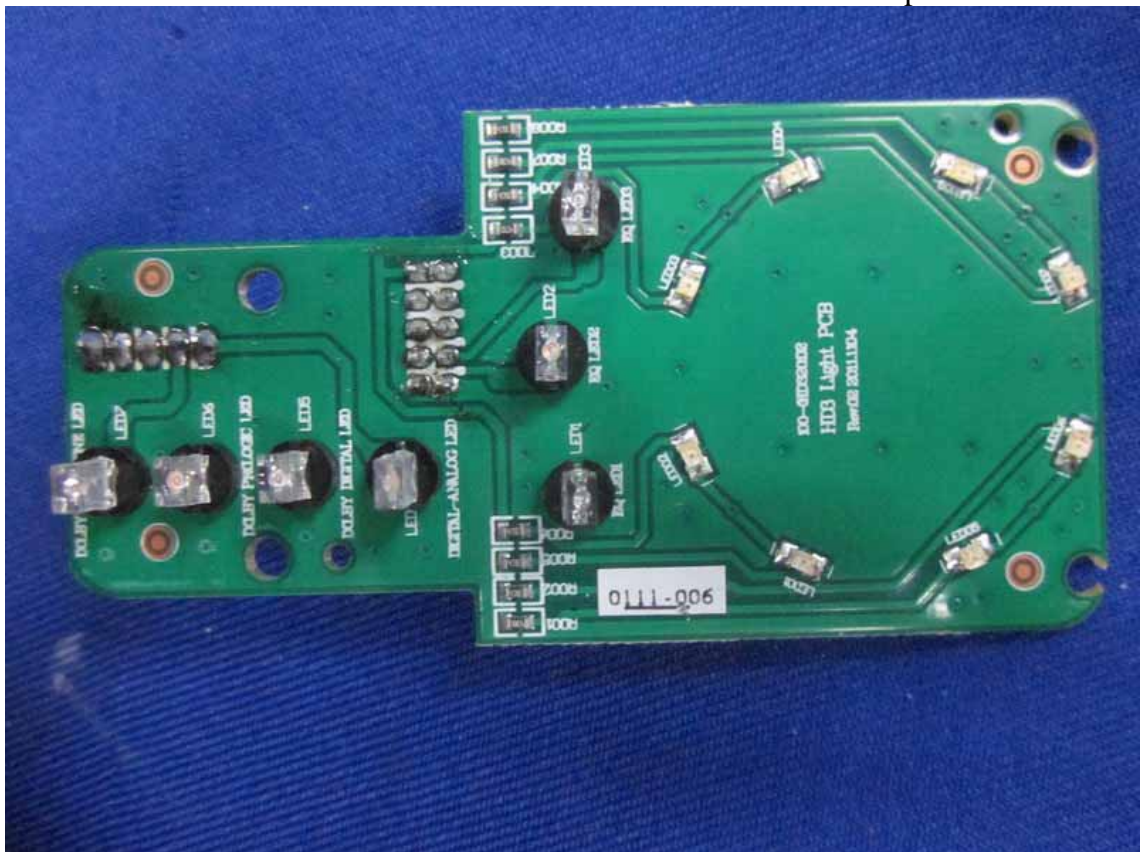


Figure 15
Component Side of the PCB



Figure 16
Component Side of the PCB

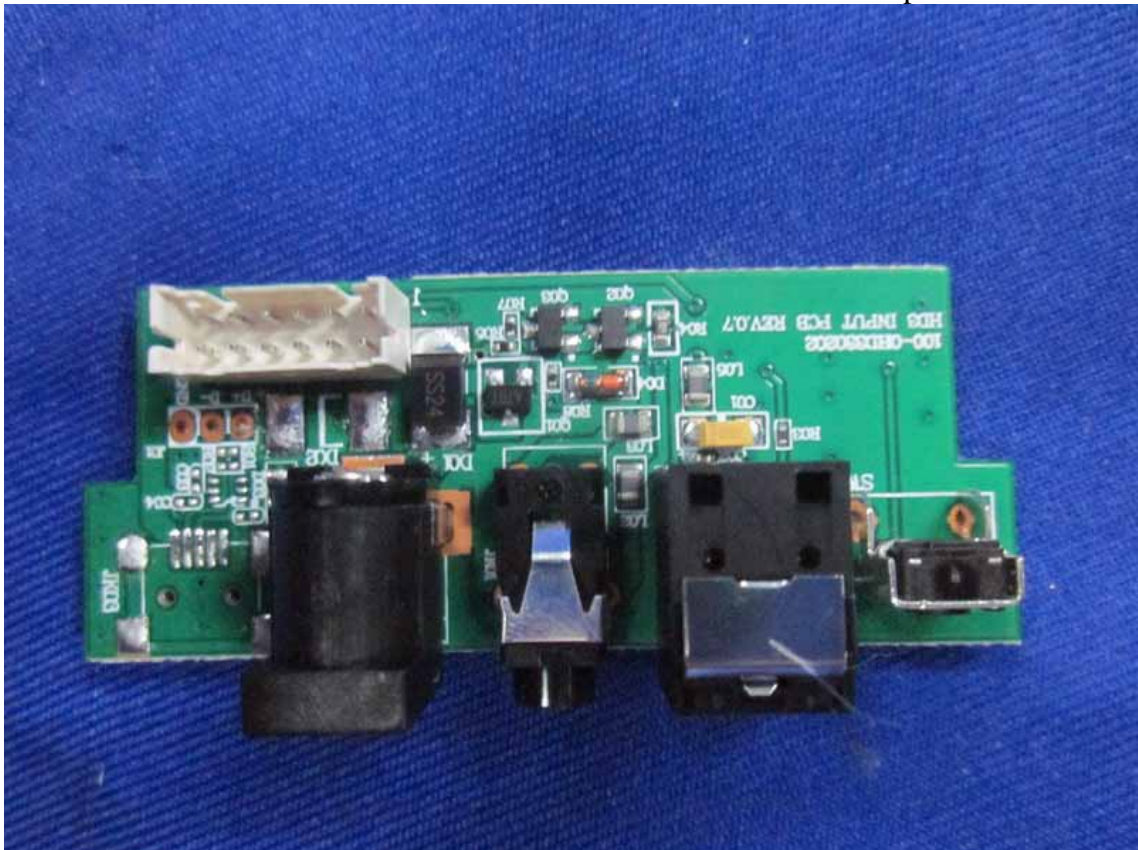


Figure 17
Component Side of the PCB



Figure 18
Power Adapter



FCC ID: WFO-ADAMRFMO
IC: 6850B-ADAMRFMO



R

202WWMC810740
202GZMC810740



N 22678

1

TP2

TP1

TP4

TP7

RFT v2.1



Z9

3110

94V-0



TP3

Infineon

MAB-X816483-005 CE



1035B0MT2

Infineon

MAB-X816483-005 CE



1037B0DRM

