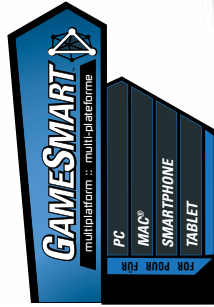


FRB.Q^M

:: WIRELESS MOBILE GAMING HEADSET :: DRÄHTLOSES MOBILES GAMING-HEADSET ::
:: CASQUE GAMER MOBILE SANS FIL ::



*Any device supporting stereo audio over Bluetooth® 2.1 + *Tous appareils prenant en charge les signaux audio stéréo via Bluetooth 2.1+

PACKAGE INCLUDES

ENGLISH

- A Headset
- B Travel Pouch
- C 3.5mm Cable (1.4 m)
- D USB Charge Cable (1.5 m)
- E Manual

FRANÇAIS

- A Casque audio
- B Housse de transport
- C Câble 3.5 mm (1,4 m)
- D Câble de charge USB (1,5 m)
- E Manuel

DEUTSCH

- A Headset
- B Transporthülle
- C 3,5-mm-Kabel (1,4 m)
- D USB-Ladekabel (1,5 m)
- E Manuell

DANSK

- A Headset
- B Rejsetaske
- C 3,5 mm kabel (1,4 m)
- D USB-opladningskabel (1,5 m)
- E Manual

ITALIANO

- A Cuffie
- B Borsa da viaggio
- C Cavo da 3,5 mm (1,4 m)
- D Cavo caricabatteria USB (1,5 m)
- E Manuale

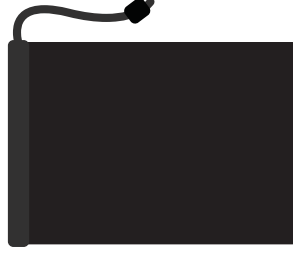
PORTUGUÊS

- A Auricular
- B Bolsa de transporte
- C Cabo 3,5 mm (1,4 m)
- D Cabo de Carregamento USB (1,5 m)
- E Manual

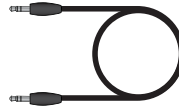
.A



.B



.C



.D



.E



CONTENTS

ENGLISH

Package Includes	2
Product Information	4
Button Functionality	5
LED Color Indicators	6
Bluetooth Setup	7
Additional Features	8

DEUTSCH

Lieferumfang	2
Produktinformationen	9
Tastenfunktionalität	10
LED-Farbanzeigen	11
Bluetooth-Einrichtung	12
Weitere Funktionen	13

FRANÇAIS

Contenu de l'emballage	2
Information produit	14
Fonction des boutons	15
Indicateurs LED de couleurs	16
Configuration Bluetooth	17
Autres fonctions	18

ITALIANO

La confezione contiene	2
Informazioni sul prodotto	19
Controllo a pulsanti	20
Indicatori colorati LED	21
Impostazioni Bluetooth	22
Caratteristiche aggiuntive	23

ESPAÑOL

El paquete incluye	2
Información del producto	24
Funciones de los botones	25
Indicadores de color LED	26
Configuración de Bluetooth	27
Funciones adicionales	28

SVENSK

Förpackningen innehåller	2
Produktinformation	29
Knappfunktioner	30
LED-färgindikatorer	31
Inställning av Bluetooth	32
Ytterligare funktioner	33

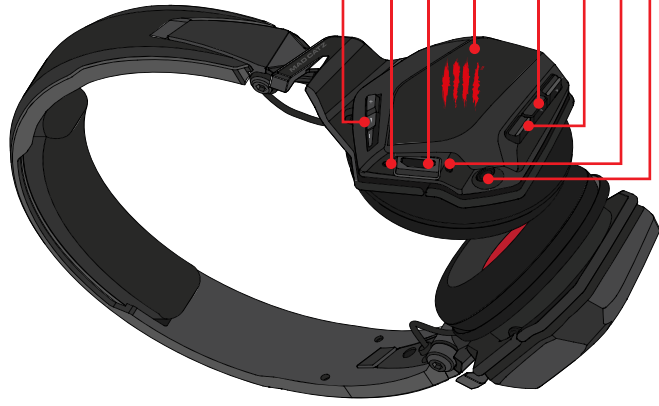
DANSK

Æsken indeholder	2
Produktinformation	34
Knappernes funktion	35
LED-farveindikatorer	36
Bluetooth-opsætning	37
Yderligere funktioner	38

PORTUGUÊS

A embalagem inclui	2
Informações do produto	39
Funções dos Botões	40
Indicadores LED coloridos	41
Configuração Bluetooth	42
Funcionalidades Adicionais	43

PRODUCT INFORMATION

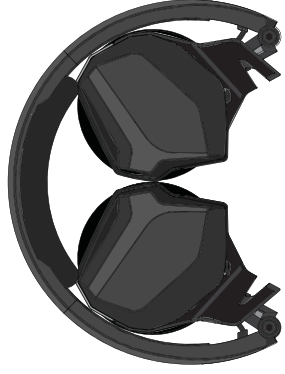


- VOLUME BUTTON
- HEADSET STATUS INDICATION
- MICRO USB PORT
- MULTI-FUNCTION BUTTON
- MIC MUTE BUTTON
- BACK/ FORWARD TRACK BUTTON
- L.E.D. CHARGE INDICATION
- 3.5 MM PLUG

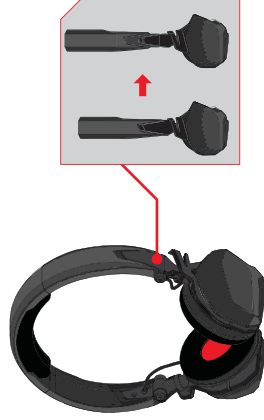
SYSTEM REQUIREMENTS:

This headset can be used with any host that supports A2DP audio streaming over Bluetooth 2.1+ and later.

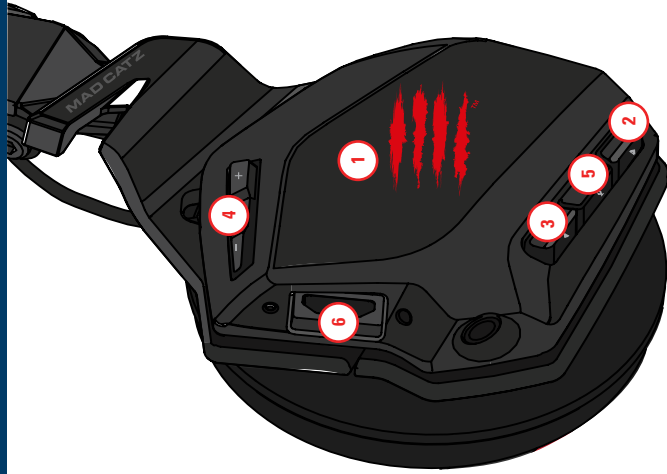
FOLDABLE CANS



ADJUSTABLE HEADBAND



BUTTON FUNCTIONALITY



1 MULTI-FUNCTION BUTTON

1. Press and hold for 5 seconds to power the headset ON/OFF
2. Single press to Play/Pause media
3. Single press to answer/end call
4. Press for 1 second to cancel an incoming call

2 PREVIOUS AND NEXT

1. Single press to skip backwards and forwards through media files
2. Press and hold to fast forward and rewind through the current media file

3 PLACING THE HEADSET INTO PAIRING MODE

To put the headset into pairing mode press and hold the next and previous track buttons for 5 seconds

4 VOLUME +/-

1. Single press to incrementally change volume
2. Press and hold to quickly alter volume

5 MIC MUTE

Single press to enable and disable the microphone

6 CHARGING THE HEADSET

1. Connect micro USB cable to headset port
2. Connect the other end of the cable to a USB port or smartphone charger
3. The headset will take 2 hours to fully charge

LED COLOR INDICATORS

HEADSET STATUS LED

POWER ON

Blue LED blinks 3 times in 1 second

POWER OFF

Red LED blinks 3 times in 1 second

PAIRING MODE

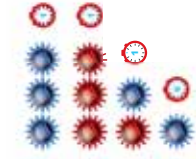
Status LED will blink red and blue once every second until connection is established

PAIRED AND OPERATING

The blue LED will pulse once every 6 seconds

LOW BATTERY (5%)

The red LED will pulse once every 6 seconds



CHARGE LED

CHARGING



Charge time = 2 hours

READY



Battery life = 15 hours

BLUETOOTH SETUP

CONNECTING THE HEADSET TO A TABLET OR SMARTPHONE

1. Power the headset ON
2. The headset needs to be in pairing mode with the status LED blinking red and blue
3. Set the Bluetooth status of the host to on, and search for new devices
4. The F.R.E.Q.[™] will appear in the device list, when it does, tap the entry to connect it to the host
5. The headset is now ready to use

CONNECTING THE HEADSET TO A WINDOWS 8 HOST

1. Power the headset ON
2. The headset needs to be in pairing mode with the status LED blinking red and blue
3. Open the Settings Charm and select 'Change PC settings'
4. Select the Devices section and click 'Add a device'
5. The F.R.E.Q.[™] will appear in the device list, when it does, tap the entry to connect it to the host
6. The headset is now ready to use

CONNECTING THE HEADSET TO A MAC OS X COMPUTER

1. Power the headset ON
2. The headset needs to be in pairing mode with the status LED blinking red and blue
3. Click the Bluetooth icon at the top of the screen and ensure that Bluetooth is On
4. Click 'Set Up Bluetooth Device'
5. The F.R.E.Q.[™] will appear in the device list, when it does, select it and click 'Continue'
6. Once paired click the Bluetooth icon again, point to the F.R.E.Q.[™] Headset and then click 'Use as Audio Device'
7. The headset is now ready to use

CONNECTING THE HEADSET TO A WINDOWS 7 COMPUTER

1. Power the headset ON
2. The headset needs to be in pairing mode with the status LED blinking red and blue
3. Ensure Bluetooth is enabled on the computer
4. Click the Bluetooth icon in System Tray next to your clock
5. Click 'Add Device'
6. Select F.R.E.Q.[™] Headset and then click 'Next'
7. Allow Windows to finish installing drivers
8. Click 'Start'
9. Type 'sound' in the search bar at the bottom
10. Click the 'Sound' icon that appears in the list
11. Under the Playback tab select the F.R.E.Q.[™] Headset
12. Click 'Set Default'
13. Do the same under the Recording tab
14. The headset is now ready to use

IMPORTANT INFORMATION

- Audio streaming is carried out via the Advanced Audio Distribution Profile (A2DP); your Bluetooth host must support this profile.
- Media and call handling are controlled via the Hands Free Profile (HFP), Headset Profile (HSP) and Audio/Video Remote Control Profile (AVRCP).
- Your Bluetooth host must support these profiles in order for these features to work.
- The F.R.E.Q.M is also aptX®-enabled for high quality Bluetooth stereo audio, so you can lose the wires without any loss of audio quality. If your host device supports aptX, any audio will be streamed using this high quality, low latency codec. To see if your device is aptX-enabled, please visit our website to view a compatibility list- www.madcatz.com/compatibility/aptx



ADDITIONAL FEATURES

FLIGHT MODE

On flights where Bluetooth is not allowed, the headset can still be used

1. Press and hold the multi-function button for 3 seconds to power the headset OFF
2. Connect the 3.5 mm jack to the port on the right ear can
3. Connect the other end of the cable to your audio source

MULTISYNC

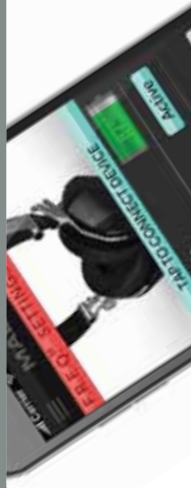
The headset can automatically manage the audio interaction between up to eight paired devices.

For example, if you receive a call on your phone whilst watching a film on your tablet the headset would take care of it. In this instance the film would pause, allowing you to take the call on your phone with the buttons on the headset. Once the call is ended, headset focus would be returned to the tablet to carry on watching your film.

To set up multisync on another device, simply initiate the pairing process with that extra device.

MAD CATZ APP FOR MOBILE DEVICES

- There are five equalizer settings for the headset
- The equalizer mode can be altered by downloading the Mad Catz mobile app onto your Android or iOS device
- When the headset is connected to your smart device, open the Mad Catz app and tap the F.R.E.Q.[™] entry to alter settings and view product information



TROUBLESHOOTING

RESETTING THE HEADSET

- Press and hold the multi-function button for 3 seconds to power headset OFF
- Press and hold the multi-function button and the previous track button for 5 seconds to remove all pairing information

Addendum



EN

Warning: Changes or modifications not expressly approved by the party responsible for compliance could void the user's authority to operate the equipment.

NOTE: THE MANUFACTURER IS NOT RESPONSIBLE FOR ANY RADIO OR TV INTERFERENCE CAUSED BY UNAUTHORIZED MODIFICATIONS TO THIS EQUIPMENT. SUCH MODIFICATIONS COULD VOID THE USER'S AUTHORITY TO OPERATE THE EQUIPMENT.

This device complies with Part 15 of the FCC Rules. Operation is subject to the following two conditions: (1) this device may not cause harmful interference, and (2) this device must accept any interference received, including interference that may cause undesired operation.

This device complies with Industry Canada licence-exempt RSS standard(s). Operation is subject to the following two conditions: (1) this device may not cause interference, and (2) this device must accept any interference, including interference that may cause undesired operation of the device.

FR

Le présent appareil est conforme aux CNR d'Industrie Canada applicables aux appareils radio exempts de licence. L'exploitation est autorisée aux deux conditions suivantes : (1) l'appareil ne doit pas produire de brouillage, et (2) l'utilisateur de l'appareil doit accepter tout brouillage radioélectrique subi, même si le brouillage est susceptible d'en compromettre le fonctionnement.

B60-MCB43406-Addendum

MCB43406 FREQ M Wireless-Addendum-R0
Size: 100 (W) x 100 (H)mm
Material: 128gsm Double Side Art Paper
Color: 1C + 0
Coating: Vernish
Date: 11-Sep-2013