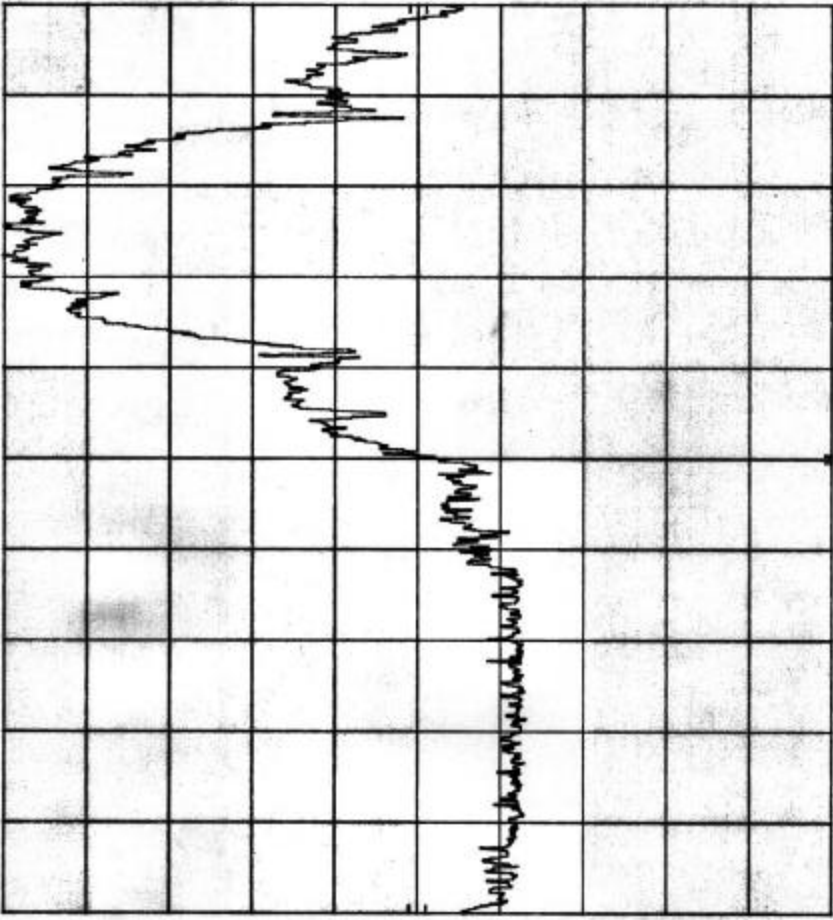


R-8288 AMPLIDYNE ANTENNA CONDUCTED PL 4/14/00
 REF 5.3 dBm ATTEN 20 dB



10 dB/
 /p
 OFFSET 10.0 dB
 DL -14.7 dBm

START 2.400 0 GHz RES BW 100 kHz
 STOP 2.483 5 GHz SWP 25.1 msec
 VBW 300 kHz

Customer: Amplidyne, Inc.
 Test Sample: 2.4 GHz Direct Sequence Spread Spectrum Transmitter System
 Model No.: AMP-2425-275 FCC ID: XXXAMP2425-275
 Test Method: FCC Part 15 / C, Para 15.247 (c) Art. Conducted Emissions
 Notes: Channel No.: 11
 Date: April 14, 2000 Tech: P. Lananna Sheet 19 of 34



Retlif Testing Laboratories

Report No. R-8288

R-8288 AMPLIDYNE ANTENNA CONDUCTED PL 4/14/00
 REF 5.3 dBm ATTEN 20 dB

hp

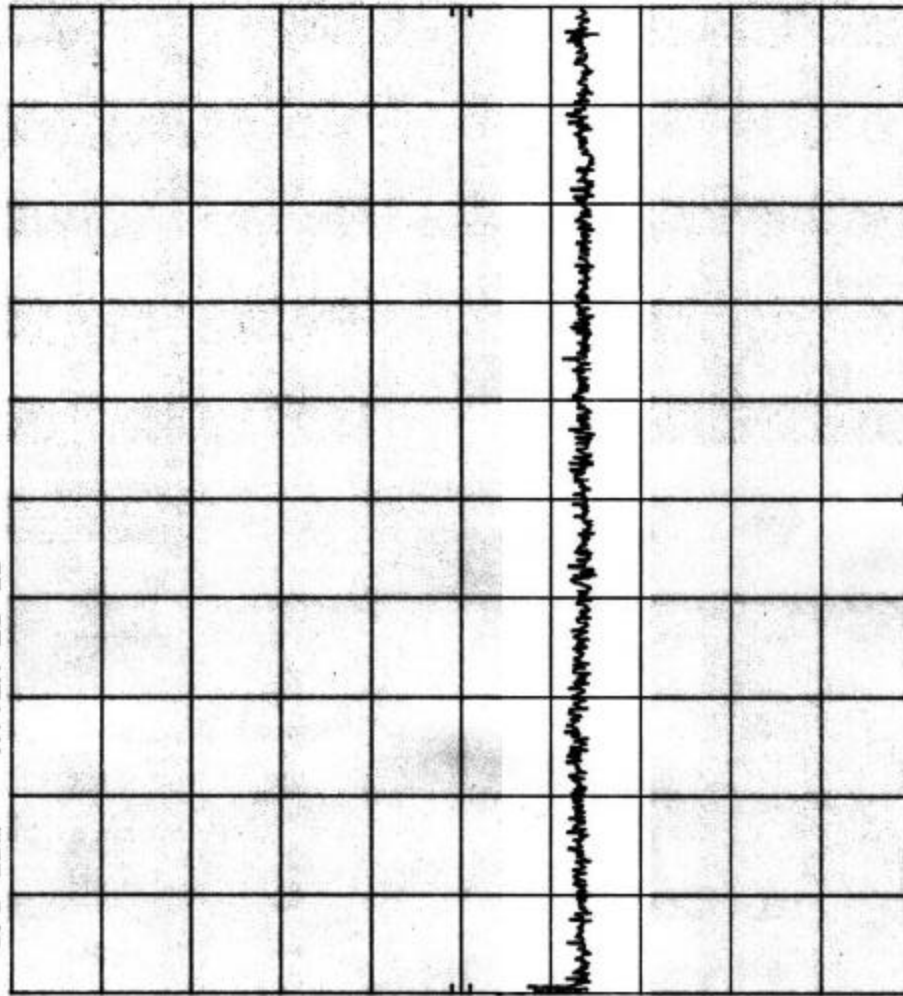
10 dB/

OFFSET

10.0
dB

DL

-14.7
dBm



START 2.48 GHz RES BW 100 kHz VBW 300 kHz SWP 455 msec STOP 4.00 GHz

Customer:	Amplidyne, Inc.
Test Sample:	2.4 GHz Direct Sequence Spread Spectrum Transmitter System
Model No.:	AMP-2425-275 FCC ID: XXXAMP2425-275
Test Method:	FCC Part 15 / C, Para 15.247 (c) Ant. Conducted Emissions
Notes:	Channel No.: 11
Date:	April 14, 2000
Tech:	P. Lananna
Sheet	20 of 34



Retlif Testing Laboratories

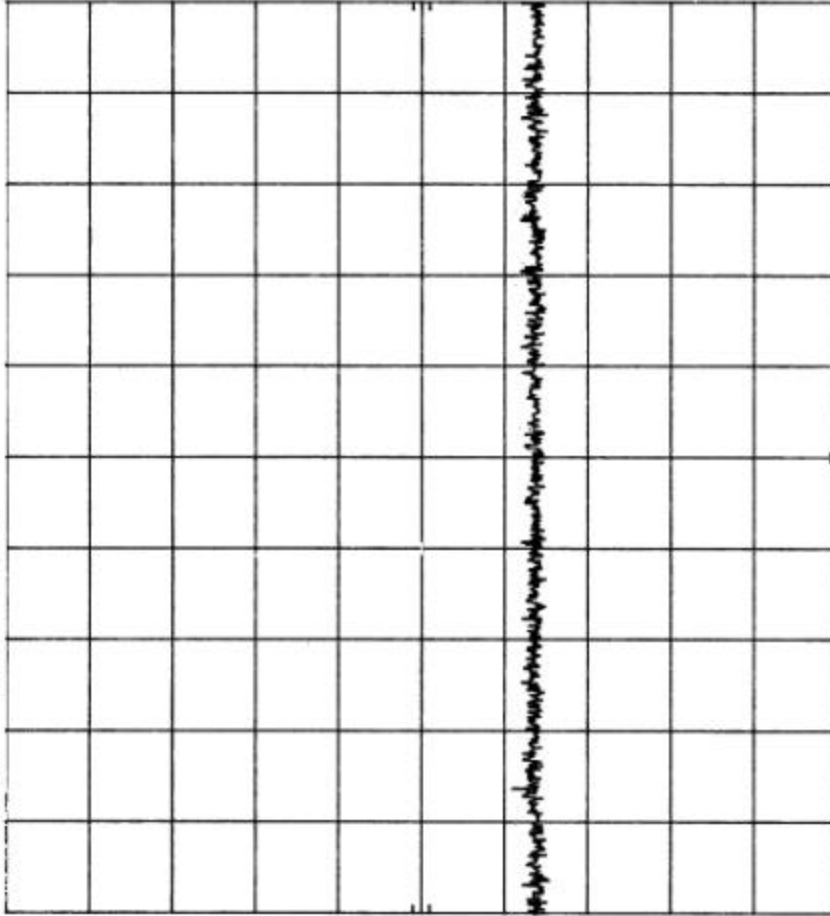
Report No. R-8288

R-8288 AMPLIDYNE ANTENNA CONDUCTED PL 4/14/00
 REF 5.3 dBm ATTEN 20 dB

f_p
 10 dB/

OFFSET
 10.0
 dB

DL
 -14.7
 dBm



START 4.00 GHz RES BW 100 kHz VBW 300 kHz STOP 5.00 GHz SWP 300 msec

Customer:	Amplidyne, Inc.
Test Sample:	2.4 GHz Direct Sequence Spread Spectrum Transmitter System
Model No.:	AMP-2425-275 FCC ID: XXXAMP2425-275
Test Method:	FCC Part 15 / C, Para 15.247 (c) Ant. Conducted Emissions
Notes:	Channel No.: 11
Date:	April 14, 2000
Tech:	P. Lananna
Sheet:	21 of 34



Retlif Testing Laboratories

Report No. R-8288

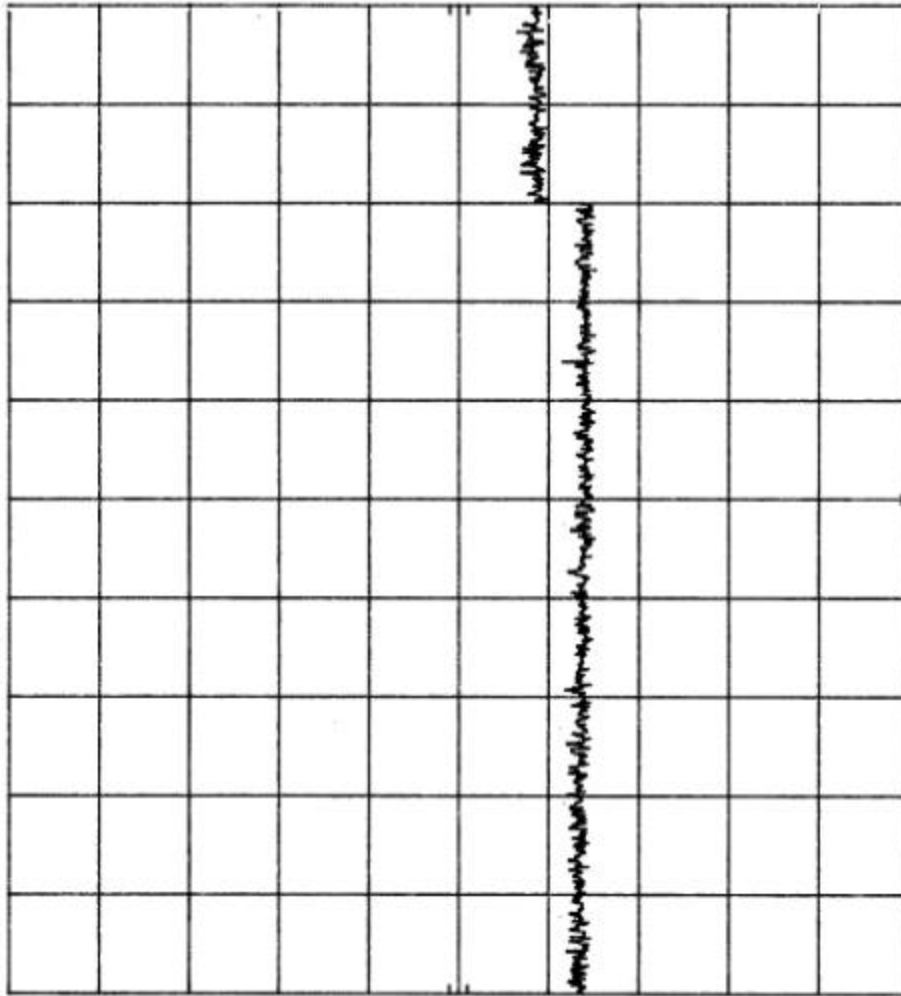
R-8288 AMPLIDYNE ANTENNA CONDUCTED PL 4/14/00
 REF 5.3 dBm ATTEN 20 dB

hp

10 dB/

OFFSET
 10.0
 dB

DL
 -14.7
 dBm



START 5.00 GHz RES BW 100 kHz VBW 300 kHz SWP 300 msec STOP 6.00 GHz

Customer:	Amplidyne, Inc.
Test Sample:	2.4 GHz Direct Sequence Spread Spectrum Transmitter System
Model No.:	AMP-2425-275 FCC ID: XXXAMP2425-275
Test Method:	FCC Part 15 / C, Para 15.247 (c) Ant. Conducted Emissions
Notes:	Channel No.: 11
Date:	April 14, 2000
Tech:	P. Lananna
Sheet	22 of 34

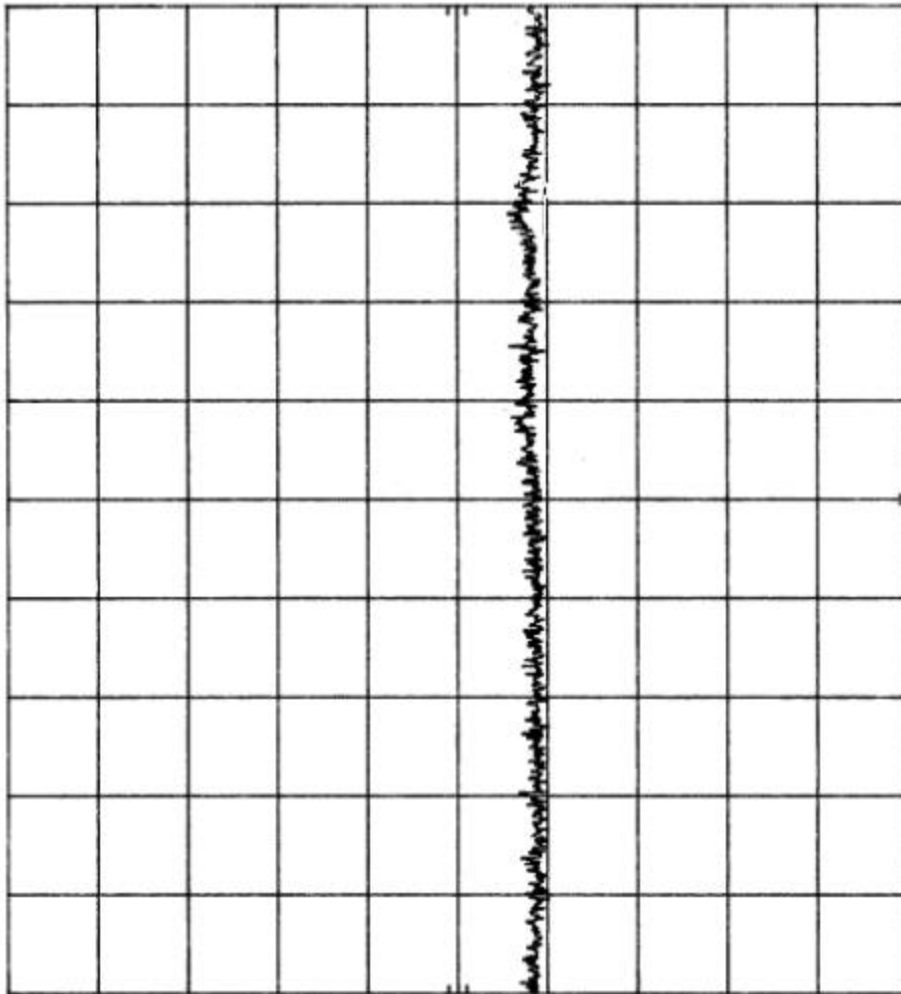


Retlif Testing Laboratories

Report No. R-8288

R-8288 AMPLIDYNE ANTENNA CONDUCTED PL 4/14/00
 REF 5.3 dBm ATTEN 20 dB

hp
 10 dB/
 OFFSET
 10.0
 dB
 DL
 -14.7
 dBm



START 6.00 GHz
 RES BW 100 kHz
 VBW 300 kHz
 SWP 300 msec
 STOP 7.00 GHz

Customer:	Amplidyn, Inc.
Test Sample:	2.4 GHz Direct Sequence Spread Spectrum Transmitter System
Model No.:	AMP-2425-275 FCC ID: XXXAMP2425-275
Test Method:	FCC Part 15 / C, Para 15.247 (c) Ant. Conducted Emissions
Notes:	Channel No.: 11
Date:	April 14, 2000
Tech:	P. Lananna
Sheet:	23 of 34

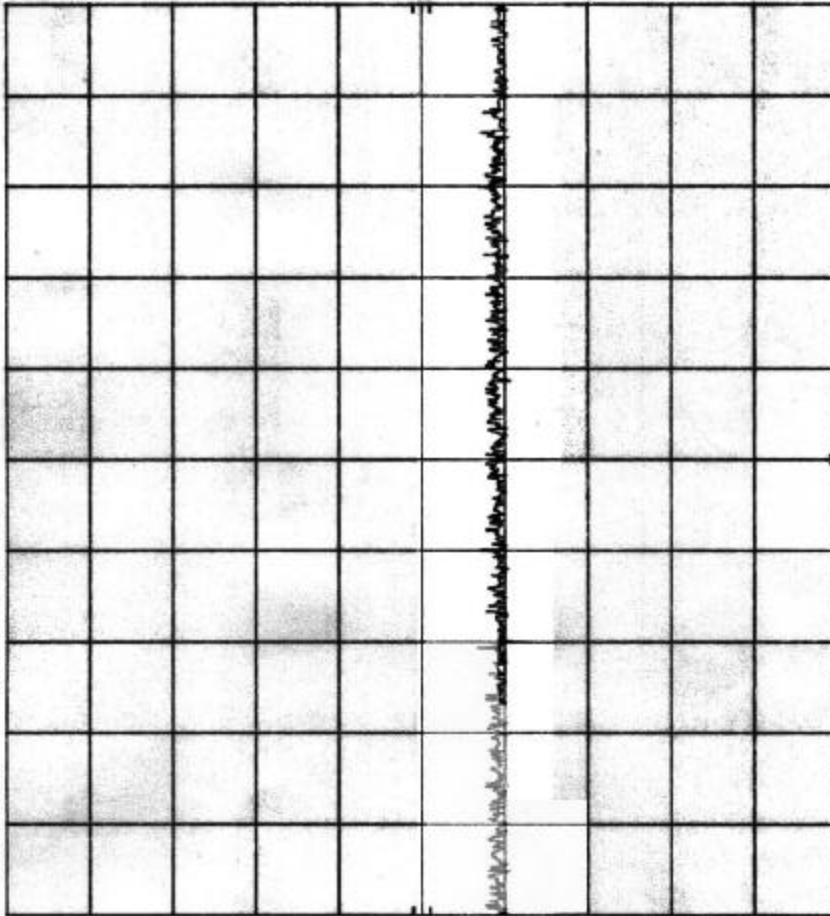


Retlif Testing Laboratories

Report No. R-8288

R-8288 AMPLIDYNE ANTENNA CONDUCTED PL 4/14/00
 REF 5.3 dBm ATTEN 20 dB

10 dB/
 OFFSET 10.0 dB
 DL -14.7 dBm



START 7.00 GHz RES BW 100 kHz VBW 300 kHz SWP 300 msec STOP 8.00 GHz

Customer: Amplidyne, Inc.
 Test Sample: 2.4 GHz Direct Sequence Spread Spectrum Transmitter System
 Model No.: AMP-2425-27S FCC ID: XXXAMP2425-27S
 Test Method: FCC Part 15 / C, Para 15.247 (c) Ant. Conducted Emissions
 Note: Channel No.: 11
 Date: April 14, 2000 Tech: P. Laranra Sheet 24 of 34



Retlif Testing Laboratories

Report No. R-8288