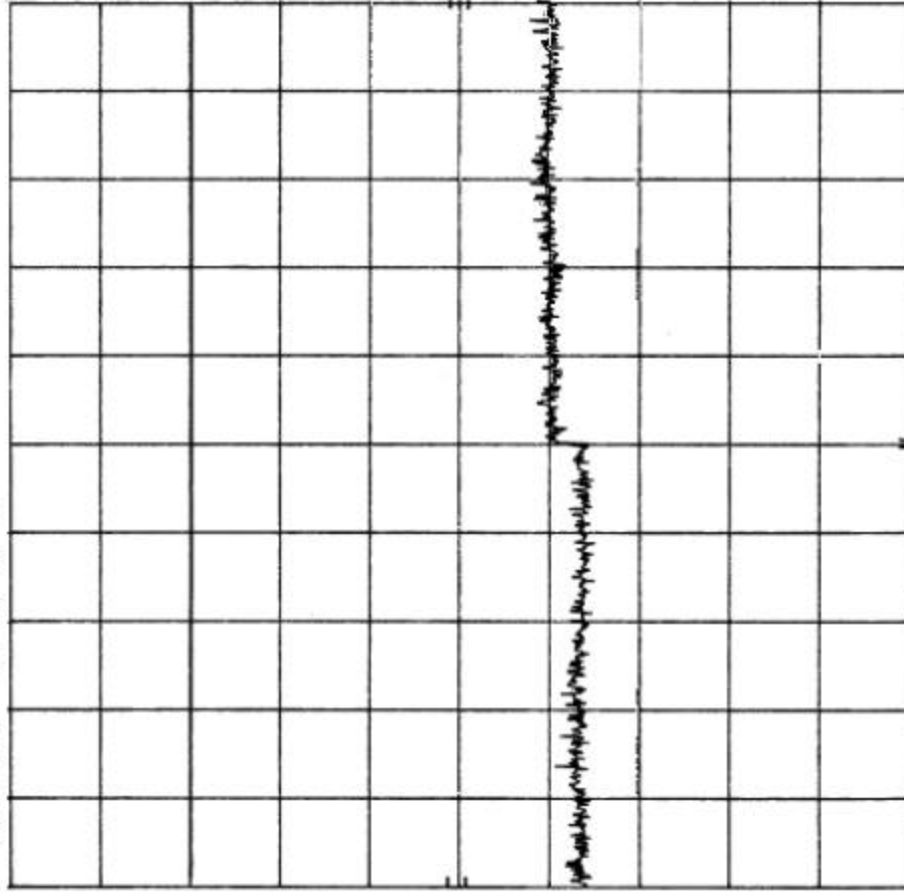


R-8288 AMPLIDYNE ANTENNA CONDUCTED PL 3/10/00
 REF 10.0 dBm ATTEN 20 dB

hp

10 dB/

OFFSET
 10.0
 dB



START 10.00 GHz
 RES BW 100 kHz
 VBW 300 kHz
 STOP 15.00 GHz
 SWP 1.50 sec

Customer:	Amplidyne, Inc.
Test Sample:	2.4 GHz Direct Sequence Spread Spectrum Transmitter System
Model No.:	AMP-2425-275 FCC ID: XXXAMP2425-275
Test Method:	FCC Part 15 / C, Para 15.247 (c) Ant. Conducted Emissions
Notes:	Channel No.: 3
Date:	Match 10, 2000
Tech:	P. Laranna
Sheet	7 of 24



Retlif Testing Laboratories

Report No. R-8288

R-8288 AMPLIDYNE ANTENNA CONDUCTED PL 3/10/00
 REF 10.0 dBm ATTEN 20 dB

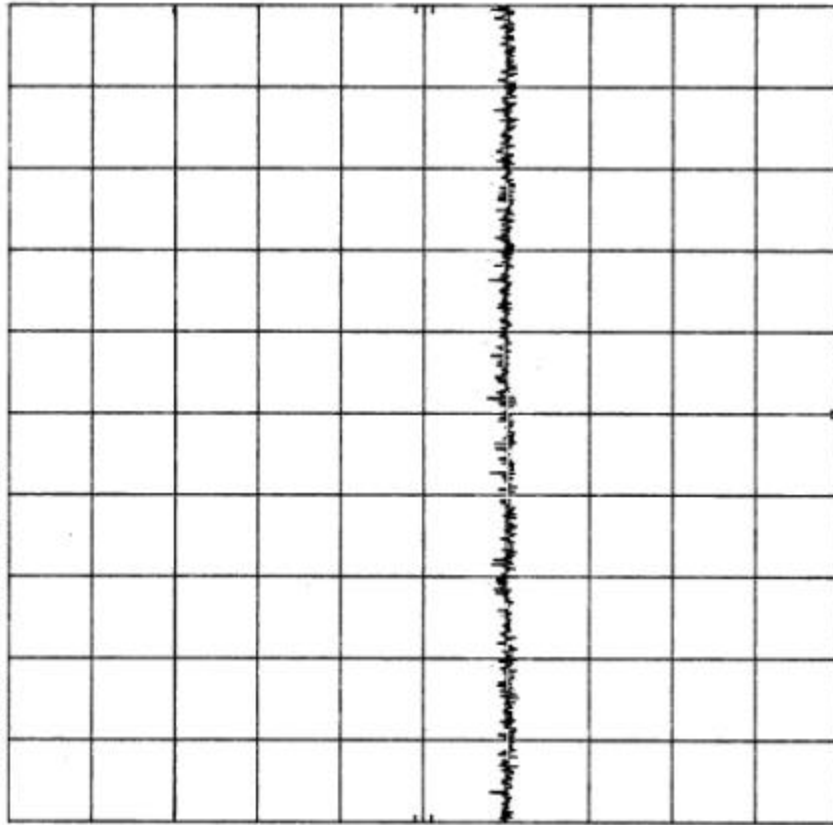
/p

10 dB/

OFFSET

10.0

dB



START 15.00 GHz RES BW 100 kHz VBW 300 kHz STOP 16.00 GHz SWP 900 msec

Customer:	Amplidyne, Inc.
Test Sample:	2.4 GHz Direct Sequence Spread Spectrum Transmitter System
Model No.:	AMP-2425-275 FCC ID: XXXAMP2425-275
Test Method:	FCC Part 15 / C, Para 15.247 (c) Art. Conducted Emissions
Notes:	Channel No.: 3
Date:	March 10, 2000
Tech:	P. Lananna
Sheet:	8 of 8

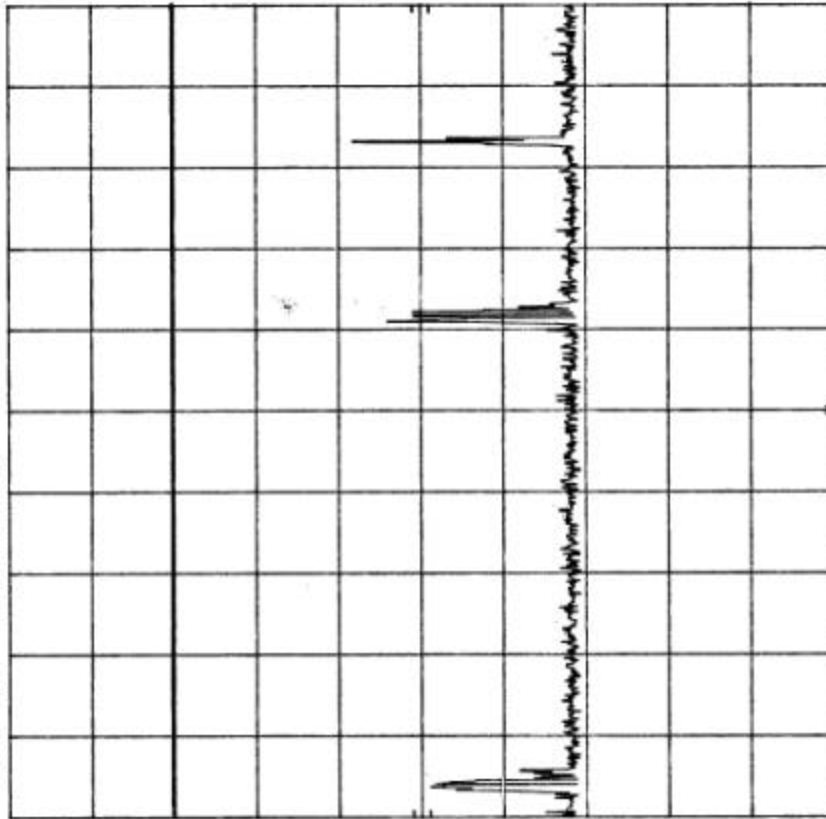


Retlif Testing Laboratories

Report No. R-8288

R-8288 AMPLIDYNE ANTENNA CONDUCTED PL 3/10/00
 REF 11.1 dBm ATTEN 20 dB

hp
 10 dB/
 OFFSET
 10.0
 dB



START 30 MHz
 RES BW 100 kHz
 VBW 300 kHz
 STOP 1.000 GHz
 SWP 291 msec

Customer:	Amplidyne, Inc.
Test Sample:	2.4 GHz Direct Sequence Spread Spectrum Transmitter System
Model No.:	AMP-2425-275 FCC ID: XXXAMP2425-275
Test Method:	FCC Part 15 / C, Para 15.247 (c) Ant. Conducted Emissions
Notes:	Channel No.: 6
Date:	March 10, 2000
Tech:	P. Lananna
Sheet:	9 of 10



Retlif Testing Laboratories

Report No. R-8288

R-8288 AMPLIDYNE ANTENNA CONDUCTED PL 3/10/00
 REF 11.1 dBm ATTEN 20 dB

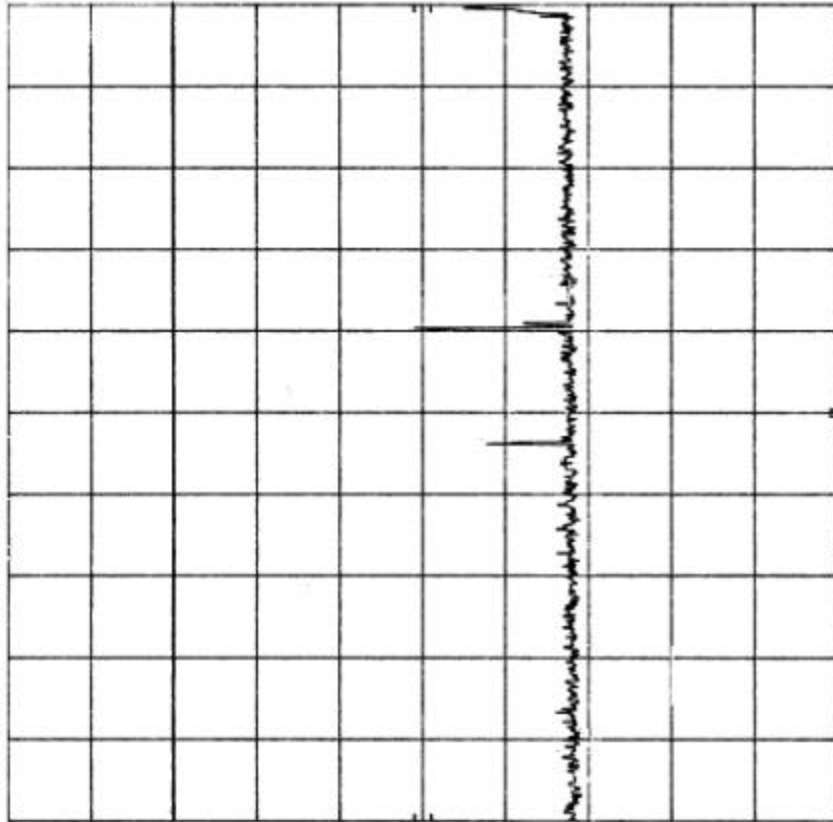
hp

10 dB/

OFFSET

10.0

dB



START 1.00 GHz RES BW 100 kHz VBW 300 kHz STOP 2.40 GHz SWP 420 msec

Customer:	Amplidyne, Inc.
Test Sample:	2.4 GHz Direct Sequence Spread Spectrum Transmitter System
Model No.:	AMP-2425-275 FCC ID: XXXAMP2425-275
Test Method:	FCC Part 15 / C, Para 15.247 (c) Art. Conducted Emissions
Notes:	Channel No.: 5
Date:	March 10, 2000
Tech:	P. Laranna
Sheet:	10 of 24



Retlif Testing Laboratories

Report No. R-8288

R-8288 AMPLIDYNE ANTENNA CONDUCTED PL 3/10/00

REF 11.1 dBm ATTEN 20 dB

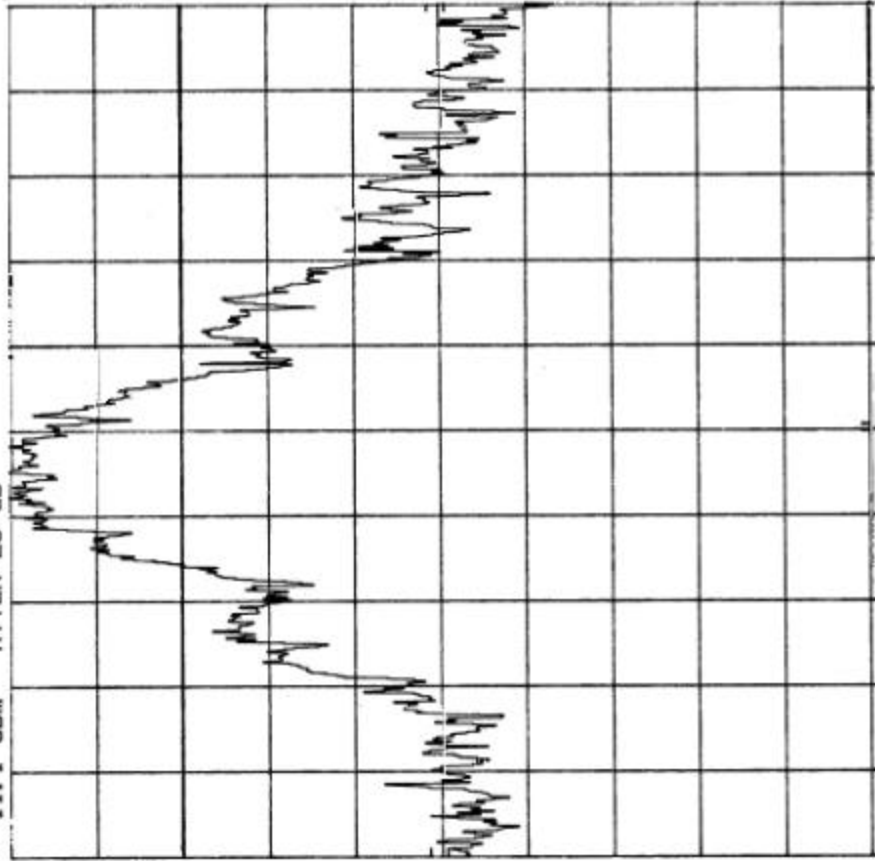
hp

10 dB/

OFFSET

10.0

dB



START 2.400 0 GHz
RES BW 100 kHz
STOP 2.483 5 GHz
SWP 25.1 msec
VBW 300 kHz

Customer:	Amplidyne, Inc.
Test Sample:	2.4 GHz Direct Sequence Spread Spectrum Transmitter System
Model No.:	AMP-2425-275 FCC ID: XXXAMP2425-275
Test Method:	FCC Part 15 / C, Para 15.247 (c) Ant. Conducted Emissions
Notes:	Channel No.: 6
Date:	Match 10, 2000
Tech:	P. Laranna
Sheet:	11 of 20



Retlif Testing Laboratories

Report No. R-8288

R-8288 AMPLIDYNE ANTENNA CONDUCTED PL 3/10/00
 REF 11.1 dBm ATTEN 20 dB

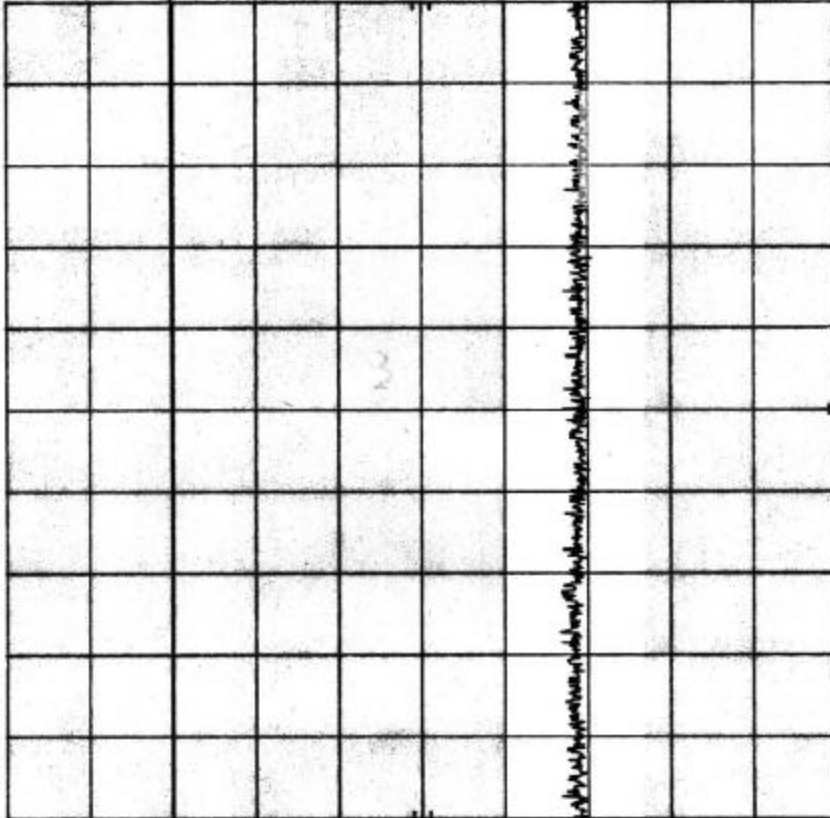
hp

10 dB/

OFFSET

10.0

dB



START 2.48 GHz

RES BW 100 kHz

VBW 300 kHz

SWP 455 msec

STOP 4.00 GHz

Customer:	Amplidyne, Inc.		
Test Sample:	2.4 GHz Direct Sequence Spread Spectrum Transmitter System		
Model No.:	AMP-2425-275	FCC ID:	XXXAMP2425-275
Test Method:	FCC Part 15/C, Para 15.247 (c) Ant. Conducted Emissions		
Notes:	Channel No.: 8		
Date:	March 10, 2000	Tech:	P. Lananna
		Sheet:	12 of 24



Retlif Testing Laboratories

Report No. R-8288