

R-8288 AMPLIDYNE ANTENNA CONDUCTED PL 3/10/00

REF 10.0 dBm ATTEN 20 dB

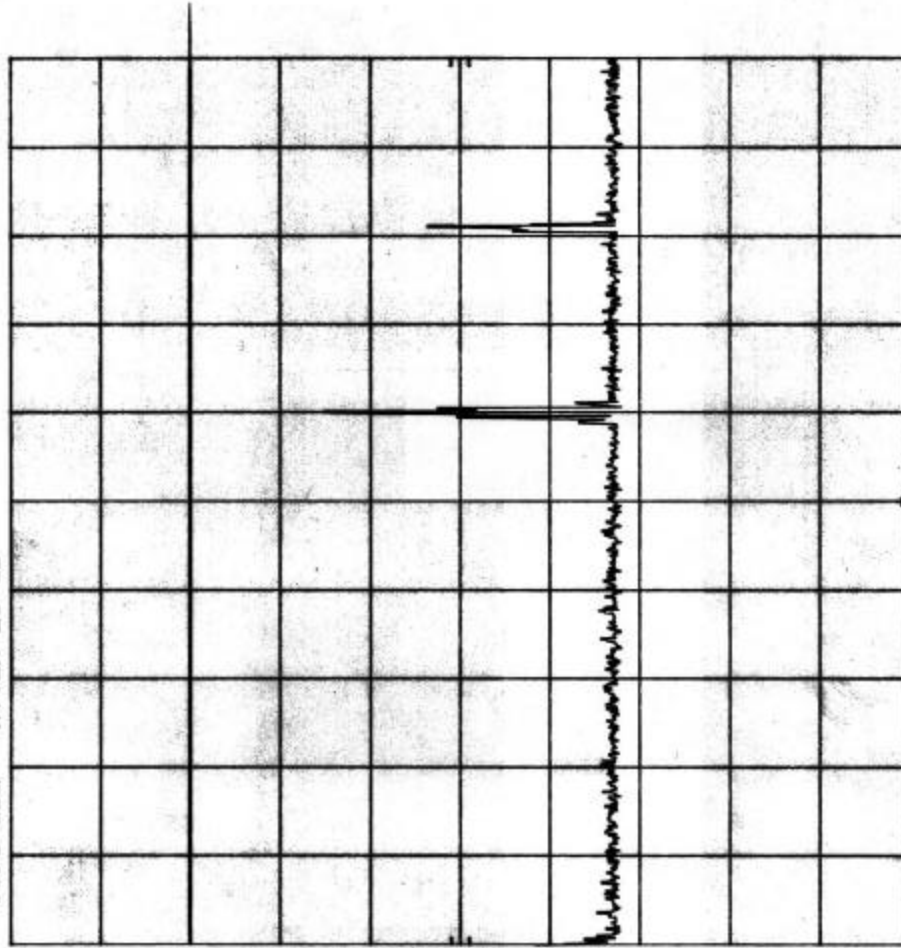
hp

10 dB/

OFFSET

10.0

dB



START 30 MHz

RES BW 100 kHz

VBW 300 kHz

STOP 1.000 GHz

SWP 291 msec

Customer:	Amplidyne, Inc.
Test Sample:	2.4 GHz Direct Sequence Spread Spectrum Transmitter System
Model No.:	AMP-2425-278 FCC ID: XXXAMP2425-278
Test Method:	FCC Part 15 / C, Para 15.247 (c) Ant. Conducted Emissions
Notes:	Channel No.: 3
Date:	Match 10, 2000
Tech:	P. Lananna
Sheet:	1 of 24



Retlif Testing Laboratories

Report No. R-8288

R-8288 AMPLIDYNE ANTENNA CONDUCTED PL 3/10/00

REF 10.0 dBm ATTEN 20 dB

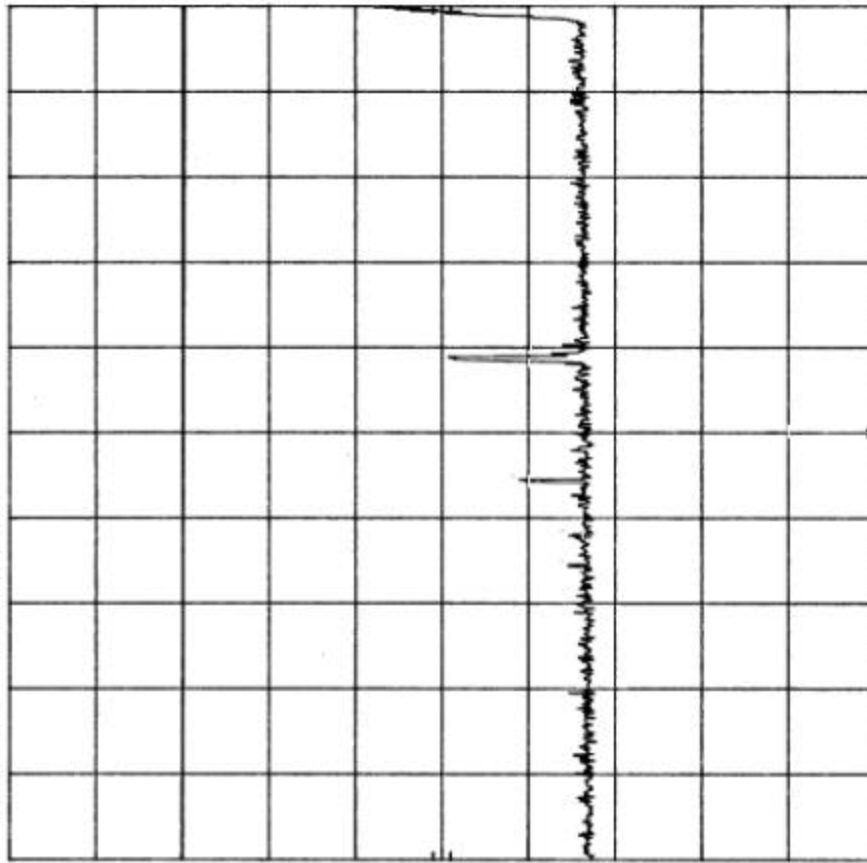
10 dB/

10 dB/

OFFSET

10.0

dB



START 1.00 GHz

RES BW 100 kHz

VBW 300 kHz

STOP 2.40 GHz

SWP 420 msec

Customer: Amplidyne, Inc.
Test Sample: 2.4 GHz Direct Sequence Spread Spectrum Transmitter System
Model No.: AMP-2425-275 FCC ID: XXXAMP2425-275
Test Method: FCC Part 15 / C, Para 15.247 (c) Ant. Conducted Emissions
Notes: Channel No.: 3
Date: March 10, 2000 Tech: P. Lananna Sheet 2 of 2



Retlif Testing Laboratories

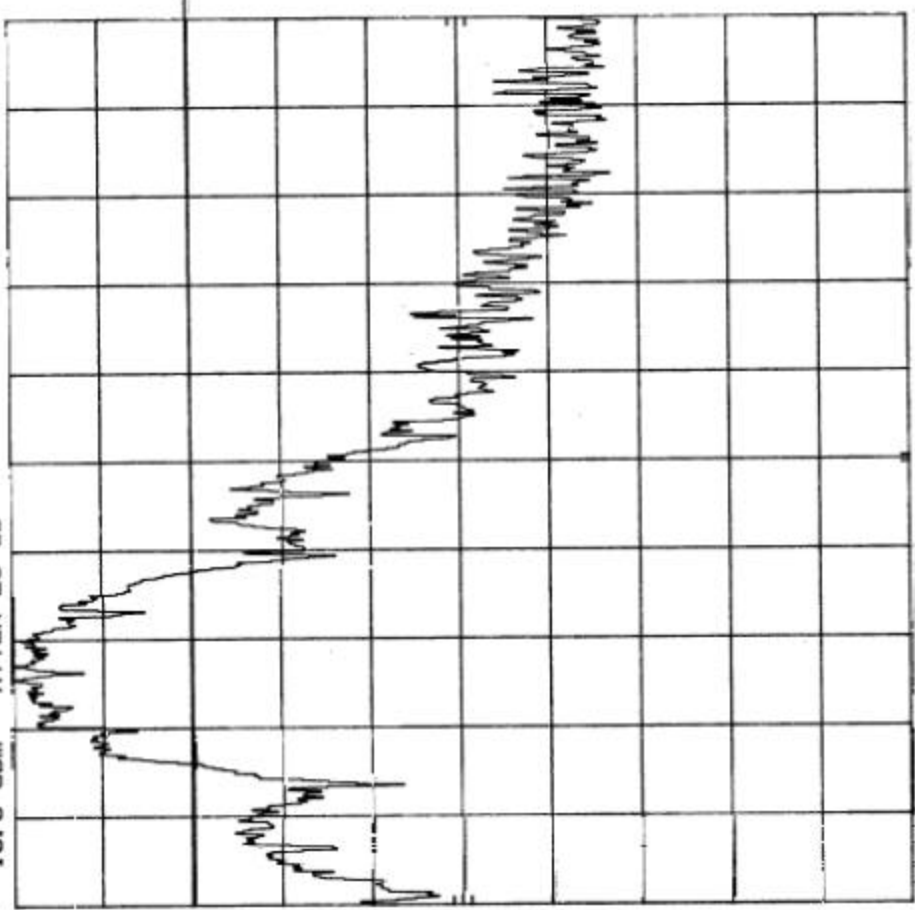
Report No. R-8288

R-8288 AMPLIDYNE ANTENNA CONDUCTED PL 3/10/00

REF 10.0 dBm ATTEN 20 dB

/p
10 dB/

OFFSET
10.0
dB



START 2.400 0 GHz
RES BW 100 kHz
STOP 2.483 5 GHz
SWP 25.1 msec
VBW 300 kHz

Customer:	Amplidyne, Inc.		
Test Sample:	2.4 GHz Direct Sequence Spread Spectrum Transmitter System		
Model No.:	AMP-2425-275	FCC ID:	XXXAMP2425-275
Test Method:	FCC Part 15 / C, Para 15.247 (c) Ant. Conducted Emissions		
Notes:	Channel No.: 3		
Date:	March 10, 2000	Tech:	P. Laranna
Sheet:	3	of	3

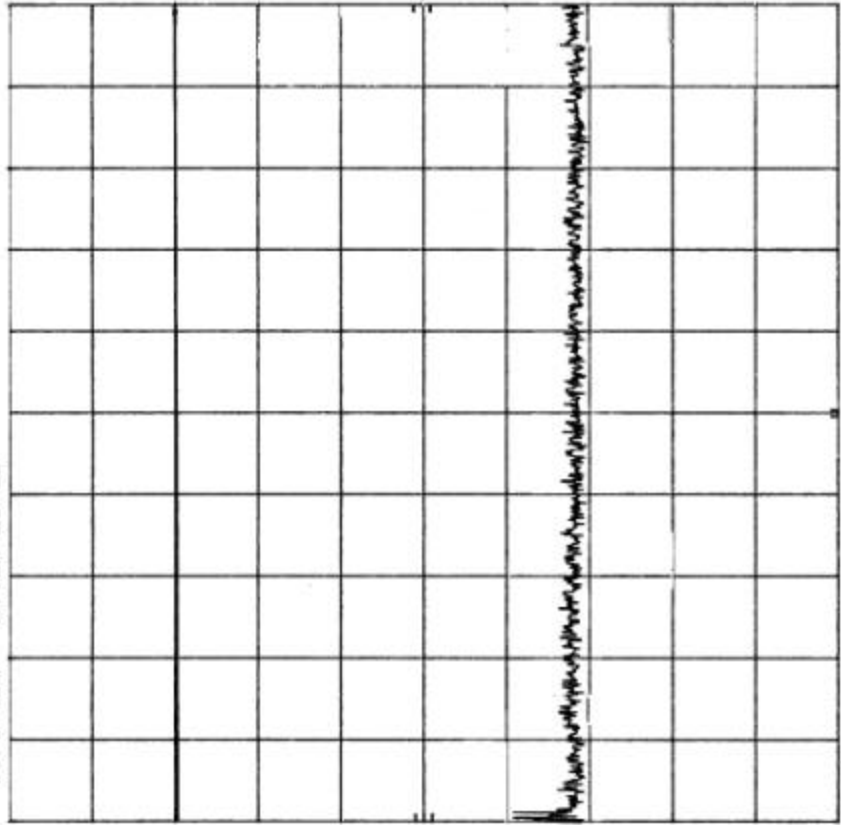


Retlif Testing Laboratories

Report No. R-8288

R-8288 AMPLIDYNE ANTENNA CONDUCTED PL 3/10/00
 REF 10.0 dBm ATTEN 20 dB

hp
 10 dB/
 OFFSET
 10.0
 dB



START 2.48 GHz
 RES BW 100 kHz
 VBW 300 kHz
 SWP 455 meec
 STOP 4.00 GHz

Customer:	Amplidyne, Inc.		
Test Sample:	2.4 GHz Direct Sequence Spread Spectrum Transmitter System		
Model No.:	AMP-2425-27S	FCC ID:	XXXAMP2425-27S
Test Method:	FCC Part 15 / C, Para 15.247 (c) Ant. Conducted Emissions		
Notes:	Channel No.: 3		
Date:	March 10, 2000	Tech:	P. Laranna
		Sheet:	4 of 4



Retlif Testing Laboratories

Report No. R-8288

R-8288 AMPLIDYNE ANTENNA CONDUCTED PL 3/10/00

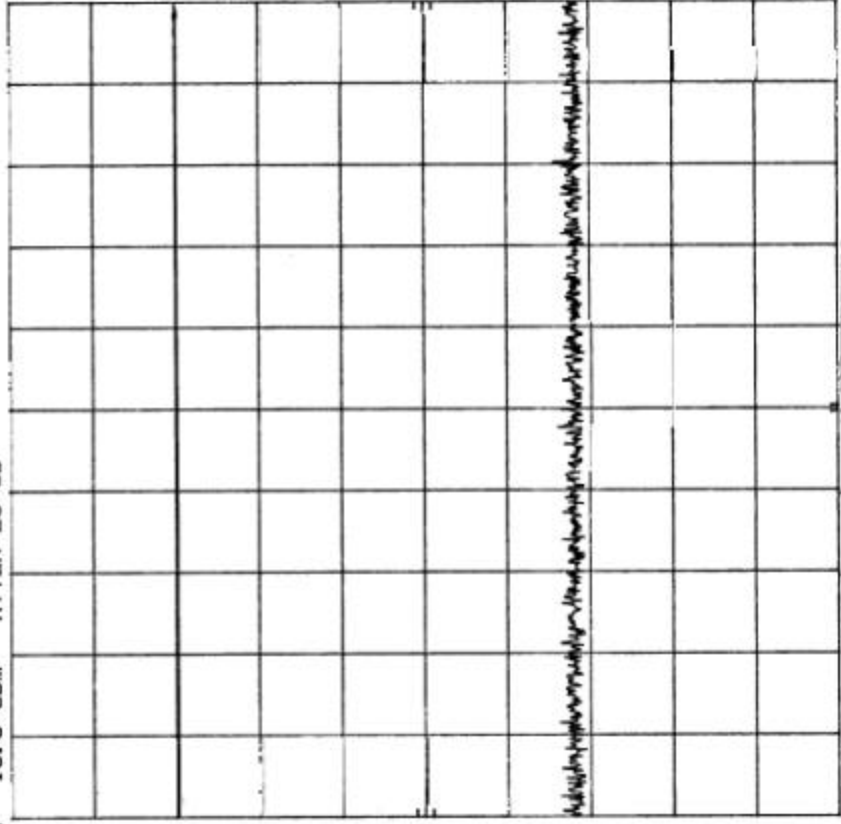
REF 10.0 dBm ATTEN 20 dB

hp

10 dB/

OFFSET

10.0 dB



START 4.00 GHz RES BW 100 kHz VBW 300 kHz SWP 300 msec STOP 5.00 GHz

Customer:	Amplidyne, Inc.
Test Sample:	2.4 GHz Direct Sequence Spread Spectrum Transmitter System
Model No.:	AMP-2425-275 FCC ID: XXXAMP2425-275
Test Method:	FCC Part 15 / C, Para 15.247 (c) Ant. Conducted Emissions
Notes:	Channel No.: 3
Date:	March 10, 2000
Tech:	P. Laranna
Sheet:	5 of 24



Retlif Testing Laboratories

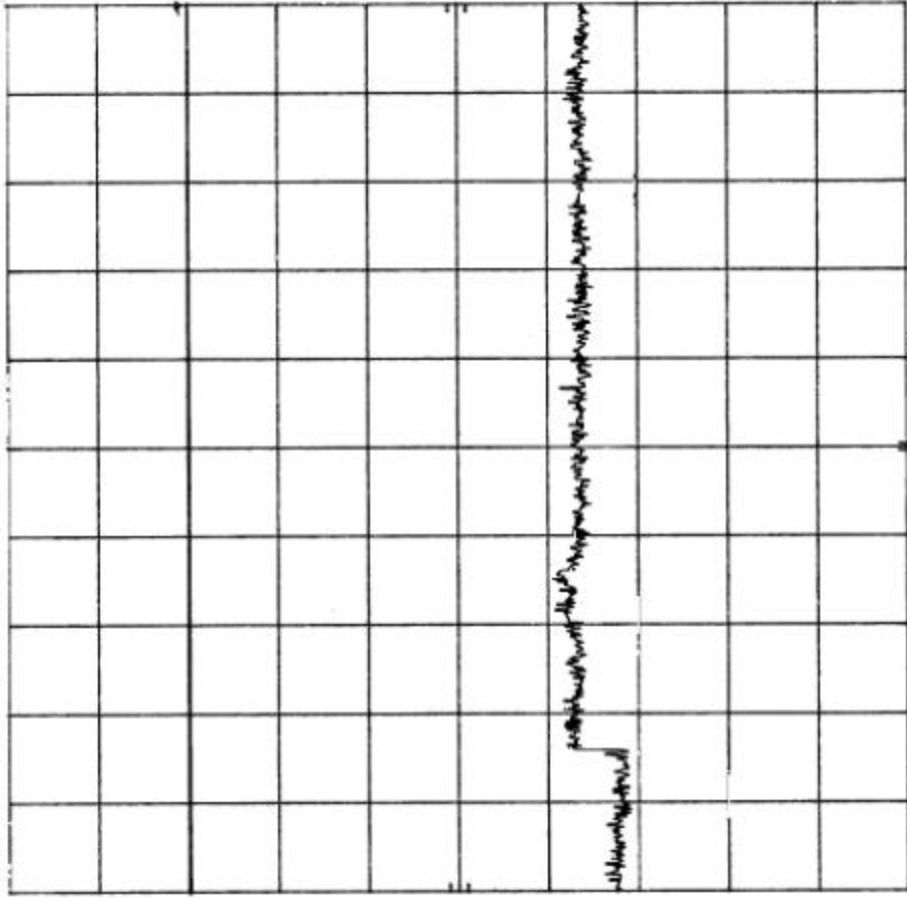
Report No. R-8288

R-8288 AMPLIDYNE ANTENNA CONDUCTED PL 3/10/00

REF 10.0 dBm ATTEN 20 dB

hp
10 dB/

OFFSET
10.0
dB



START 5.00 GHz RES BW 100 kHz
STOP 10.00 GHz SWP 1.50 sec
VBW 300 kHz

Customer:	Amplidyne, Inc.
Test Sample:	2.4 GHz Direct Sequence Spread Spectrum Transmitter System
Model No.:	AMP-2425-275 FCC ID: XXXAMP2425-275
Test Method:	FCC Part 15 / C, Para 15.247 (c) Ant. Conducted Emissions
Notes:	Channel No.: 3
Date:	Match 10, 2000
Tech:	P. Lanama
Sheet:	6 of 27



Retlif Testing Laboratories

Report No. R-8288