

Section 2 Communications Preparations

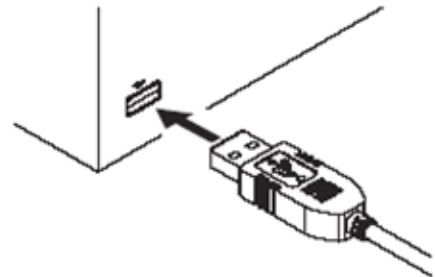
Now preparing

V680-CHUD

Connections

Connecting the Cable

1. Connect the cable connector to the USB connector on the host device, making sure that the connector is oriented correctly and not inserted at an angle.



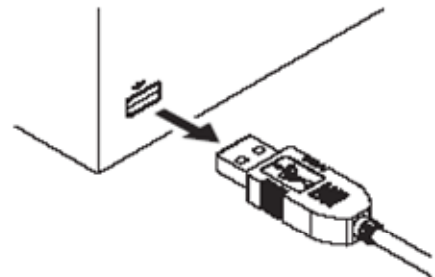
Removing the Cable

1. Remove the cable.
Close the software application at the host device and then pull out the connector in a straight line.



CHECK!

If the connector is removed while the software is running at the host device, operation may stop due to a software malfunction error.



Installing the USB Driver

When connecting the Hand-held Reader Writer to the host device for the first time, the USB driver must be installed at the host device.

Install the USB Driver in the Personal Computer

The V600-CHUD supports Windows 2000 and Windows XP operating systems. Install the driver in the host device following the procedure corresponding to the OS being used. Operation on other OS is not supported.

- Windows 2000

1. Turn ON the power to the personal computer and start Windows 2000.

2. Connect the Hand-held Reader Writer to the personal computer.



For details on connection methods, refer to Connections.

The following window will be displayed when the Hand-held Reader Writer is connected.



3. When the following window is displayed, click the **Next** Button.



4. Select **Search for a suitable driver for my device (recommended)** and then click the **Next** Button.



5. Select **Specify a location** and then click the **Next** Button.



6. Click the **Browse** Button, and select the folder in which the downloaded file RFID-Win2kcom.inf is saved.



7. Click the **Next** Button.



The following window will be displayed when software installation is completed.



8. Click the **Finish** Button.

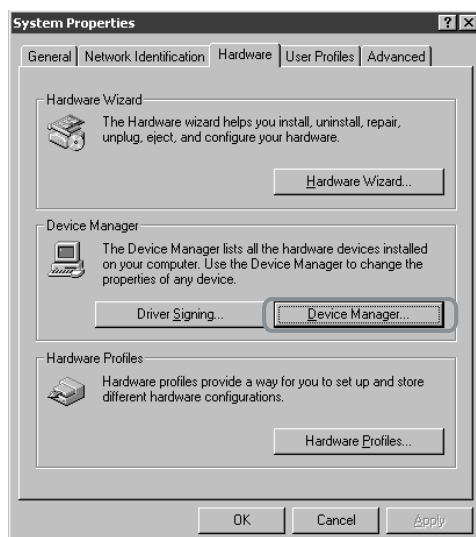
Checking Installation

Check that the driver is correctly installed.

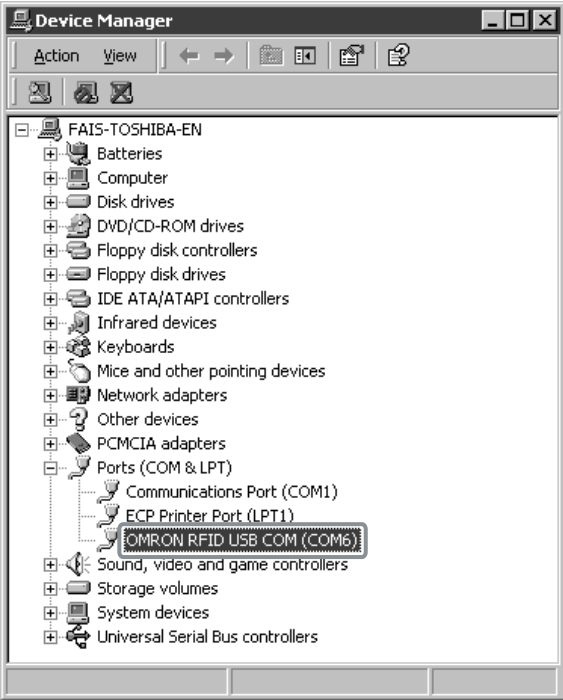
1. Connect the Hand-held Reader Writer to the personal computer.

2. On the Start Menu, select **Settings - Control Panel - System**.

3. Select the **Device Manager** Button on the Hardware Tab Page.



- 4. Select **Ports (COM & LPT)**, and check that *OMRON RFID USB COM* is displayed.
The driver is correctly installed if this port is displayed.



Communications with the Hand-held Reader Writer can be performed with the port number displayed in parentheses after *OMRON RFID USB COM*.

- WindowsXP (SP1)

1. Turn ON the power to the personal computer and start Windows XP.

2. Connect the Hand-held Reader Writer to the personal computer.



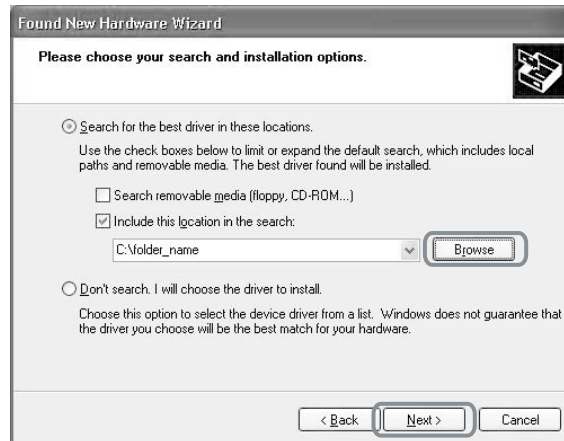
For details on connection methods, refer to Connections.

Wait for the following window to be displayed.

3. When the following window is displayed, select **Install from a list or specific location (Advanced)** and click the **Next** Button.



- Click the **Browse** Button, and select the folder in which the downloaded file *RFID-Win2kcom.inf* is saved. Then click the **Next** Button.



- Click the **Continue Anyway** Button.



When the following window is displayed, installation is completed.



- Click the **Finish** Button.

Checking Installation

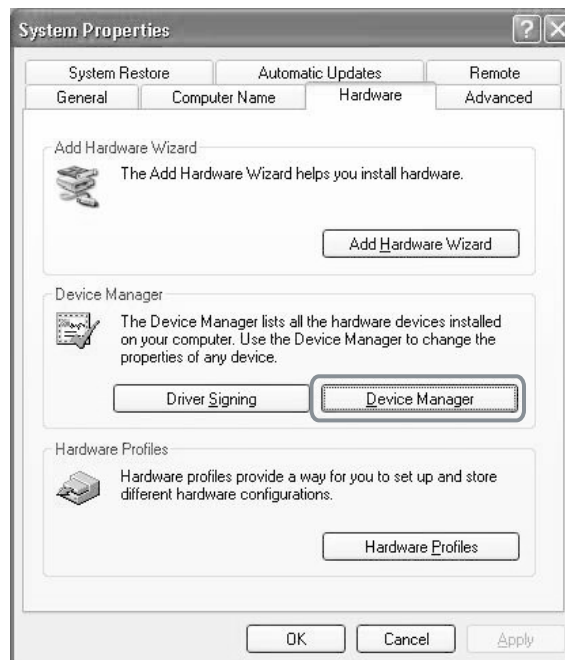
Check that the driver is correctly installed.

1. Connect the Hand-held Reader Writer to the personal computer.

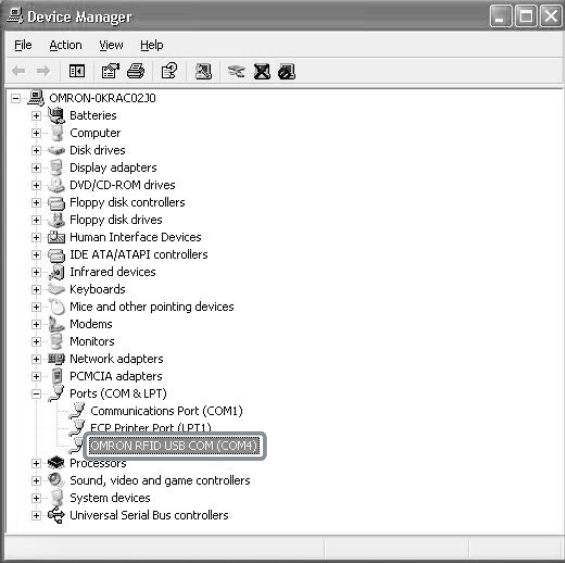
2. On the Start Menu, select **Control Panel - Performance and Maintenance**.

3. Click the **System** Icon.

4. Click the **Device Manager** Button in the Hardware Tab Page.



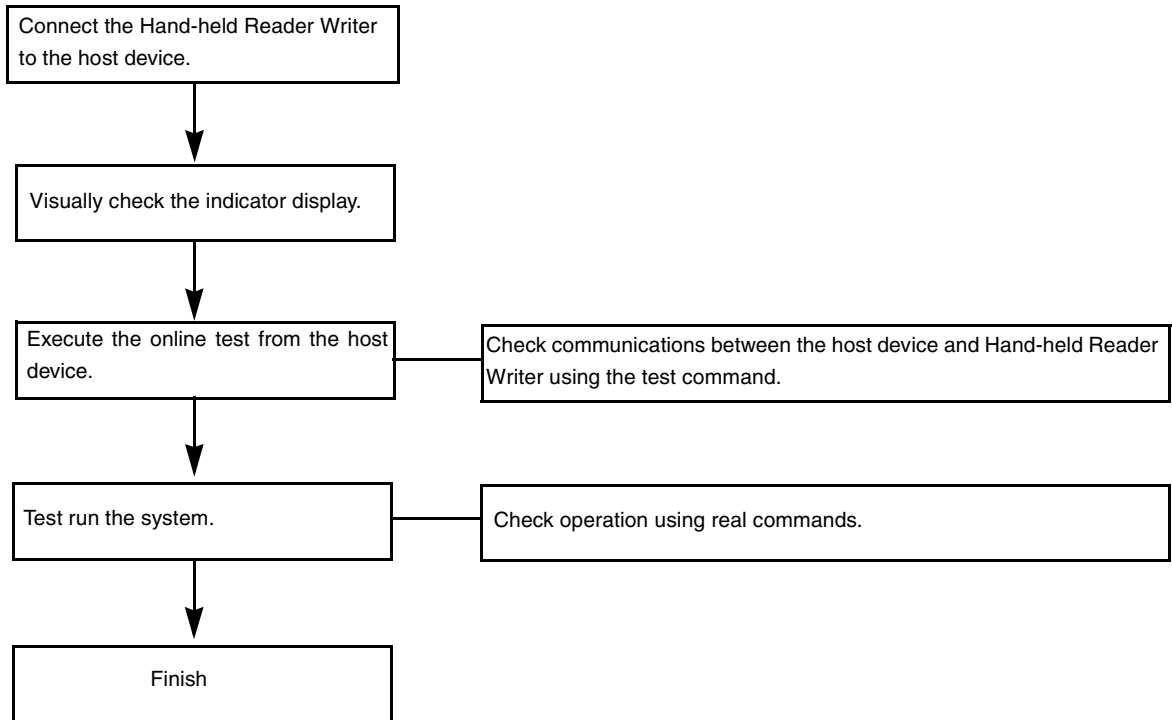
- 5. Select **Ports (COM & LPT)**, and check that *OMRON RFID USB COM* is displayed.
The driver is correctly installed if this port is displayed.



Communications with the Hand-held Reader Writer can be performed with the port number displayed in parentheses after *OMRON RFID USB COM*.

Communications Test

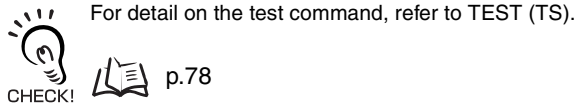
Test Run Procedure



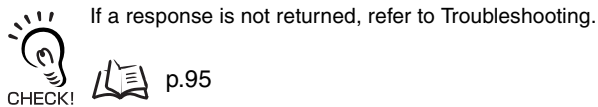
Communications Test Between Host Device and Hand-held Reader Writer

Use the test command to test communications between the Hand-held Reader Writer and host device. Before performing communications with the Data Carrier, check the Hand-held Reader Writer connections and communications.

1. Send the test command from the host device.



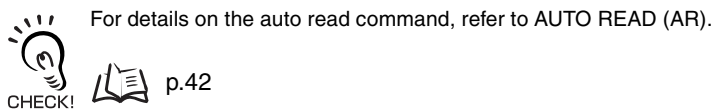
2. If communications is normal, the Hand-held Reader Writer will return the received data.



Communications Test Between the Data Carrier and Hand-held Reader Writer

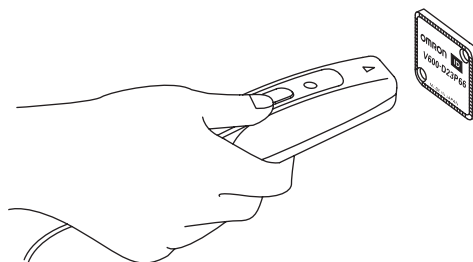
Use a real command to test communications between the Data Carrier and the Hand-held Reader Writer.

1. Send the auto read command (AR) from the host device.



The Hand-held Reader Writer will communicate with the Data Carrier and the operation indicator will flash green.

2. Move the antenna section of the Hand-held Reader Writer close to the Data Carrier.



The Hand-held Reader Writer will read the data in the Data Carrier when the Hand-held Reader Writer moves within the communications range. As a result, the operation indicator will be light green and then turn OFF.

MEMO