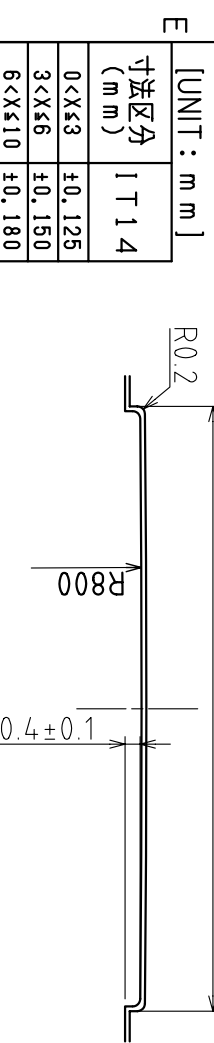
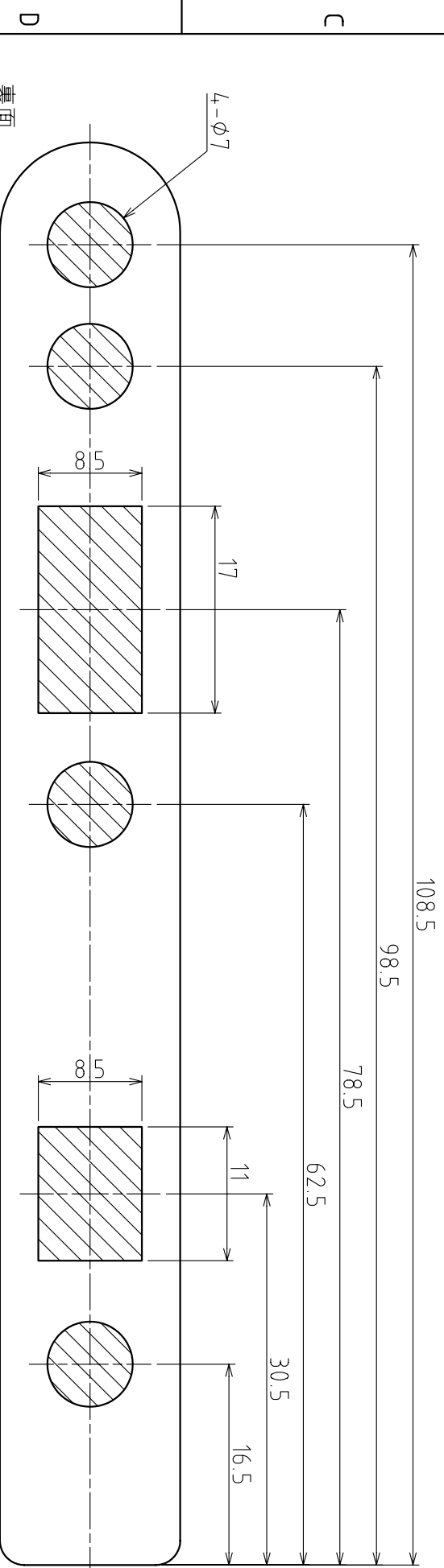
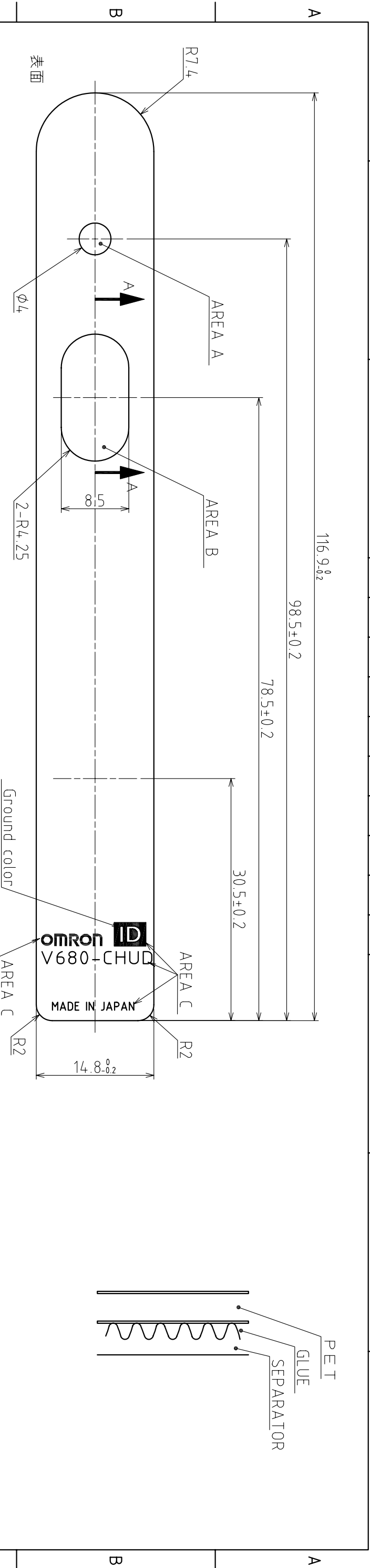


1 2 3 4 5 6 7 8



CROSS SECTION A-A
SCALE 5:1

[UNIT : mm]

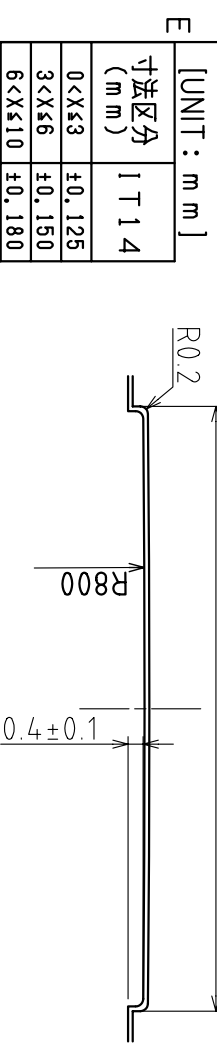
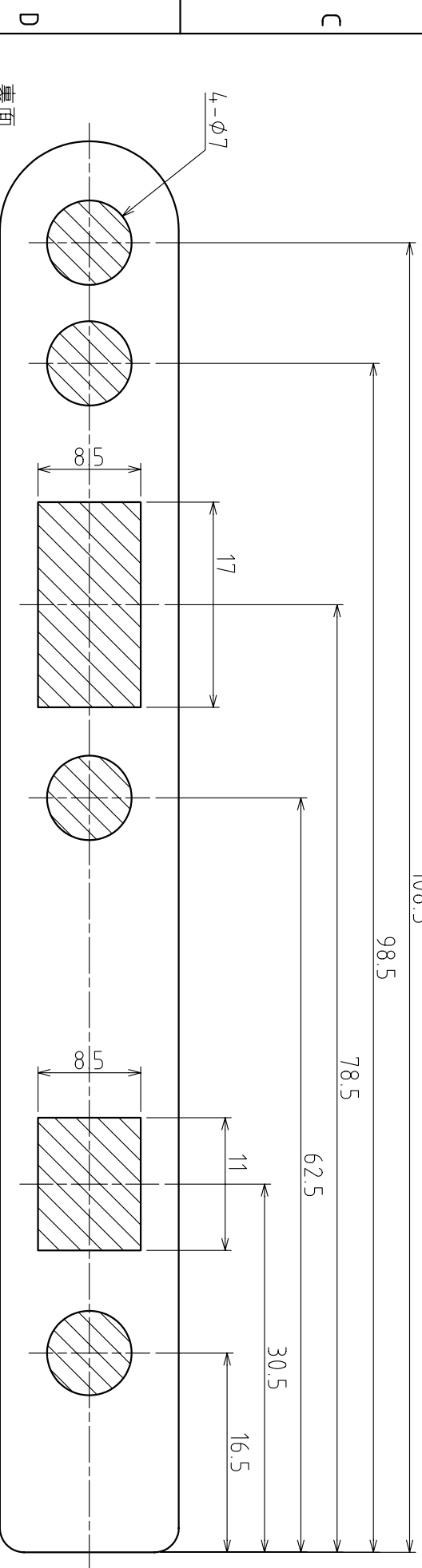
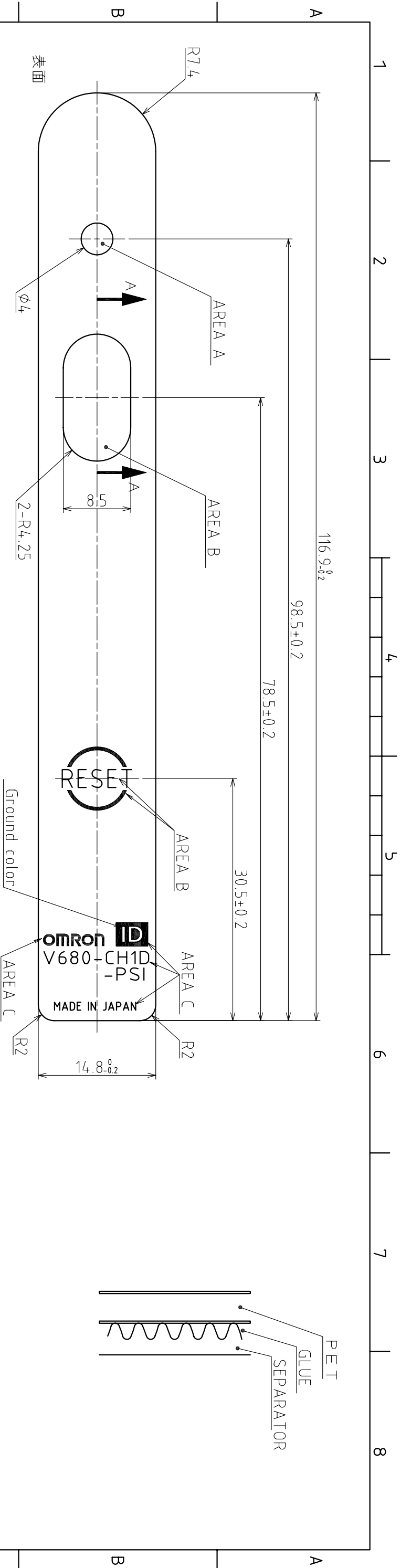
寸法区分 (mm)	IT 1 4
0<X<3	±0.125
3<X<6	±0.150
6<X<10	±0.180
10<X<18	±0.215
18<X<30	±0.260
30<X<50	±0.310
50<X<80	±0.370
80<X<120	±0.435
120<X<180	±0.500
180<X<250	±0.575
250<X<315	±0.650
315<X<400	±0.700
400<X<500	±0.775

NOTE 1. PRINTING: SILK-SCREEN IN THE INDICATED COLORS.
 PLATE: OCL-013 MOSS GRAY 7.0 (GRAY)
 AREA A: DIFFUSION TREATMENT (MILKY WHITE)
 AREA B: DIC 403 (13TH VERSION) (GREEN)
 AREA C: OCL-030 BLACK 1.5 (BLACK)
 2. NONGLARE TREATMENT SHALL BE DONE.

3. FONT STYLE SHALL BE FOLLOWED TO THE TABLE.
 4. ADHESION TO BE PRESSURE-SENSITIVE ADHESIVE.
 5. NO OUTER SHAPE LINES SHALL REMAIN AFTER FINISHING.
 6. MATERIAL THE PLATE TO BE ATTACHED TO IS ABS.
 7. PRINT POSITION TOLERANCE IS +/- 0.3 mm AND SHALL BE 1mm OR MORE AWAY FROM THE FILM EDGE.
 8. ADHESIVE AGENT SHALL BE KM WATER-BASED GLUE (BY KAKIHARA MEIBAN CO. LTD). THICKNESS OF GLUE SHALL BE NO LESS THAN 0.04mm.
 9. SHADOWED AREAS MUST NOT BE APPLIED WITH ADHESIVE AGENT.
 10. NO BURR ON THE EDGES.

Representation	Font	Height(mm)
OMRON	SPECIFIED	h = 1.5
V680-CHUD	UNIVERSE 65	h = 1.7
IDI (中抜き文字)	UNIVERSE 65	h = 2
RESET	UNIVERSE 65	h = 2.5
MADE IN JAPAN	UNIVERSE 55	h = 1.1

SYM	DATE	E/C CONTENTS	E/C NO.	SIGN	MATERIAL	FINISH	DESIGNED	CHECKED	APPROVED	SCALE	NAME	PLATE
					T0.125	PET	77777	77777	77777	2:1	Y Y Y	A
					UNLESS SPECIFIED		07/05/18				DRWG NO.	4369650-0
					1 T 1 4		RF Dev.				DESIGNED FOR	V680-CHUD
							YAMASAKI					



NOTE 1. PRINTING: SILK-SCREEN IN THE INDICATED COLORS.
 PLATE: OCL-013 MOSS GRAY 7.0 (GRAY)
 AREA A: DIFFUSION TREATMENT (MILKY WHITE)
 AREA B: DIC 403 (13TH VERSION) (GREEN)
 AREA C: OCL-030 BLACK 1.5 (BLACK)
 2. NONGLARE TREATMENT SHALL BE DONE.

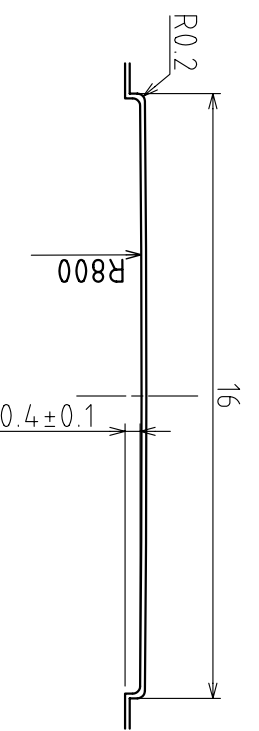
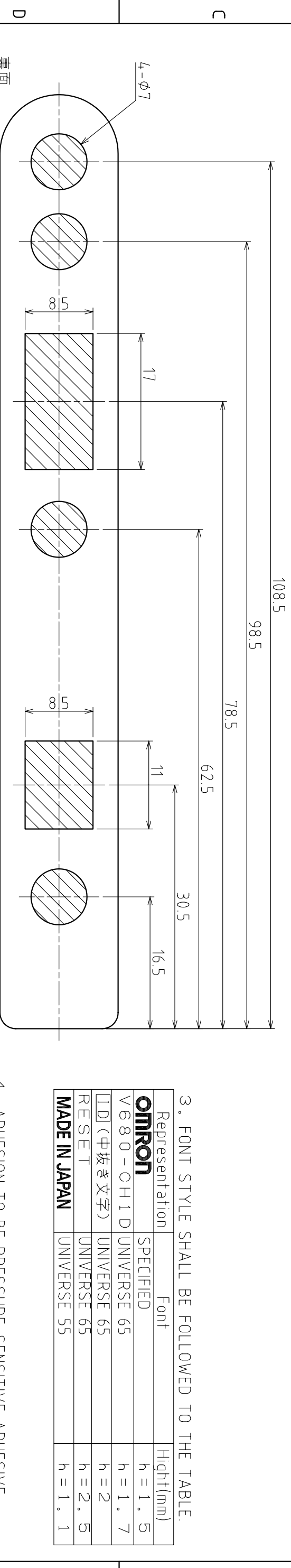
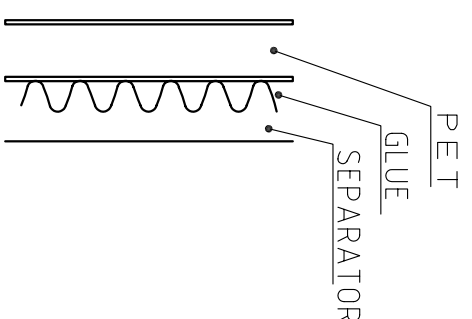
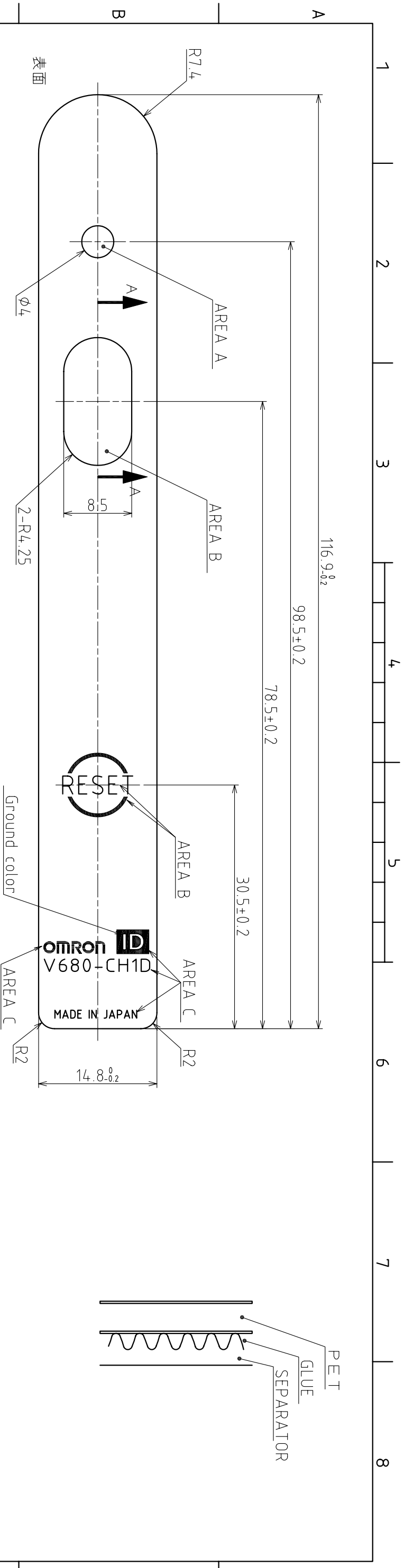
3. FONT STYLE SHALL BE FOLLOWED TO THE TABLE.
 4. ADHESION TO BE PRESSURE-SENSITIVE ADHESIVE.
 5. NO OUTER SHAPE LINES SHALL REMAIN AFTER FINISHING.
 6. MATERIAL THE PLATE TO BE ATTACHED TO IS ABS.
 7. PRINT POSITION TOLERANCE IS +/- 0.3 mm AND SHALL BE 1mm OR MORE AWAY FROM THE FILM EDGE.
 8. ADHESIVE AGENT SHALL BE KM WATER-BASED GLUE (BY KAKIHARA MEIBAN CO. LTD). THICKNESS OF GLUE SHALL BE NO LESS THAN 0.04mm.
 9. SHADOWED AREAS MUST NOT BE APPLIED WITH ADHESIVE AGENT.
 10. NO BURR ON THE EDGES.

Representation	Font	Hight(mm)
OMRON	SPECIFIED	h = 1.5
V680-CH1D-PSI	UNIVERSE 65	h = 1.7
IDI (中抜き文字)	UNIVERSE 65	h = 2
RESET	UNIVERSE 65	h = 2.5
MADE IN JAPAN	UNIVERSE 55	h = 1.1

[UNIT : mm]

寸法区分 (mm)	IT 14
0<X<3	±0.125
3<X<6	±0.150
6<X<10	±0.180
10<X<18	±0.215
18<X<30	±0.260
30<X<50	±0.310
50<X<80	±0.370
80<X<120	±0.435
120<X<180	±0.500
180<X<250	±0.575
250<X<315	±0.650
315<X<400	±0.700
400<X<500	±0.775

SYM	DATE	E/C CONTENTS	E/C NO.	SIGN	MATERIAL	FINISH	DESIGNED	CHECKED	APPROVED	SCALE	NAME	PLATE
					T0.125	PET	77777	77777	77777	2:1	Y Y	
					UNLESS SPECIFIED		07/05/18				DRWG NO.	4369652-6
					IT 14		RF Dev.				A	
							YAMASAKI				DESIGNED FOR	V680-CH1D-PSI



CROSS SECTION A-A
SCALE 5:1

NOTE 1. PRINTING: SILK-SCREEN IN THE INDICATED COLORS.
 PLATE: OCL-013 MOSS GRAY 7.0 (GRAY)
 AREA A: DIFFUSION TREATMENT (MILKY WHITE)
 AREA B: DIC 403 (13TH VERSION) (GREEN)
 AREA C: OCL-030 BLACK 1.5 (BLACK)
 2. NONGLARE TREATMENT SHALL BE DONE.

3. FONT STYLE SHALL BE FOLLOWED TO THE TABLE.
 4. ADHESION TO BE PRESSURE-SENSITIVE ADHESIVE.
 5. NO OUTER SHAPE LINES SHALL REMAIN AFTER FINISHING.
 6. MATERIAL THE PLATE TO BE ATTACHED TO IS ABS.
 7. PRINT POSITION TOLERANCE IS +/- 0.3 mm AND SHALL BE 1mm OR MORE AWAY FROM THE FILM EDGE.
 8. ADHESIVE AGENT SHALL BE KM WATER-BASED GLUE (BY KAKIHARA MEIBAN CO. LTD).
 THICKNESS OF GLUE SHALL BE NO LESS THAN 0.04mm.
 9. SHADOWED AREAS MUST NOT BE APPLIED WITH ADHESIVE AGENT.
 10. NO BURR ON THE EDGES.

Representation	Font	Hight(mm)
OMRON	SPECIFIED	h = 1.5
V680-CH1D	UNIVERSE 65	h = 1.7
LD (中抜き文字)	UNIVERSE 65	h = 2
RESET	UNIVERSE 65	h = 2.5
MADE IN JAPAN	UNIVERSE 55	h = 1.1

[UNIT: mm]

寸法区分 (mm)	IT 14
0<X≤3	±0.125
3<X≤6	±0.150
6<X≤10	±0.180
10<X≤18	±0.215
18<X≤30	±0.260
30<X≤50	±0.310
50<X≤80	±0.370
80<X≤120	±0.435
120<X≤180	±0.500
180<X≤250	±0.575
250<X≤315	±0.650
315<X≤400	±0.700
400<X≤500	±0.775

SYM	DATE	E/C CONTENTS	E/C NO.	SIGN	MATERIAL	T.O.	DESIGNED	CHECKED	APPROVED	SCALE	NAME	PLATE
					PET	125	Reference Note.1, 2			2:1	Y Y Y	
							DESIGNED			3RD ANGLE	NAME	PLATE
							SPECIFIED			SHEET	4369651-8	A
							UNTIL			DESIGNED FOR	V680-CH1D	