

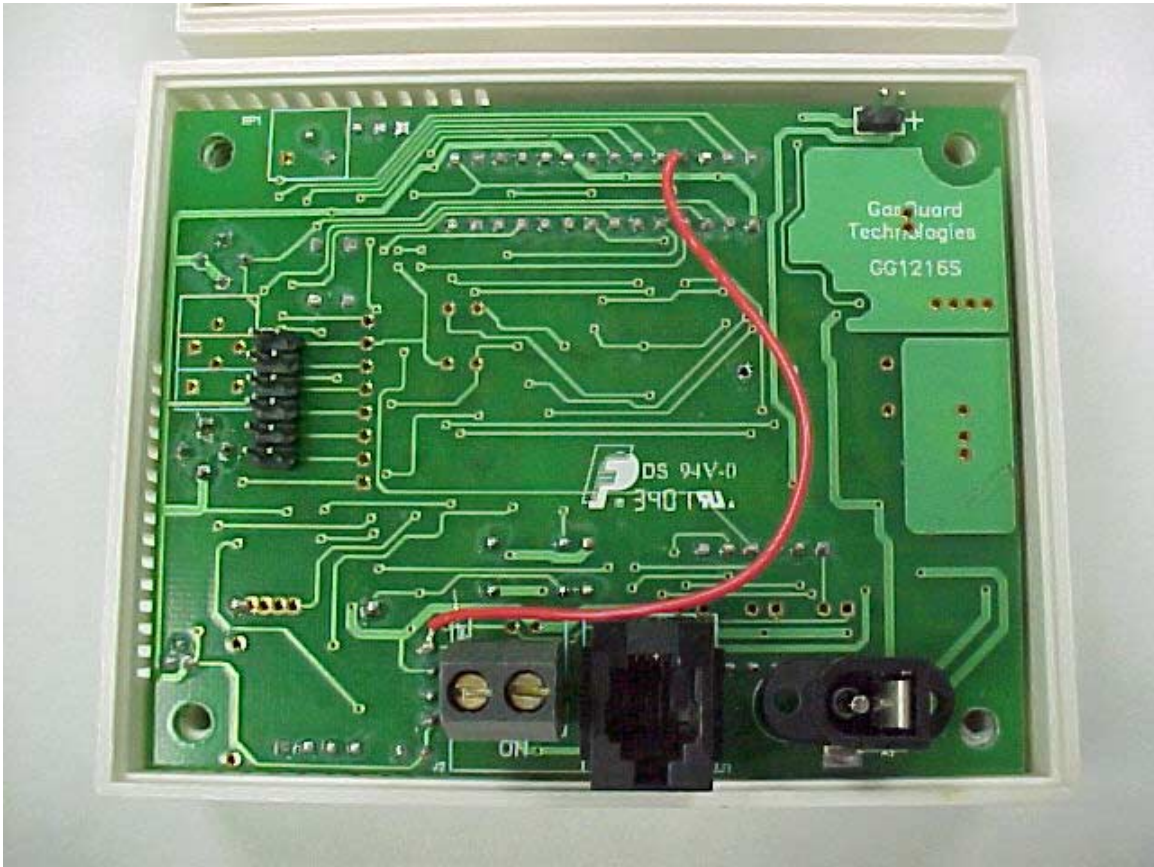
**Qtronics Manufacture, Inc.**  
**Gas Detector**  
**FCC ID#: OZE-RFT2001**

**Photo Five**  
**Open for Inspection**



**Qtronics Manufacture, Inc.**  
**Gas Detector**  
**FCC ID#: OZE-RFT2001**

**Photo Six**  
**Close-up of Digital Board**



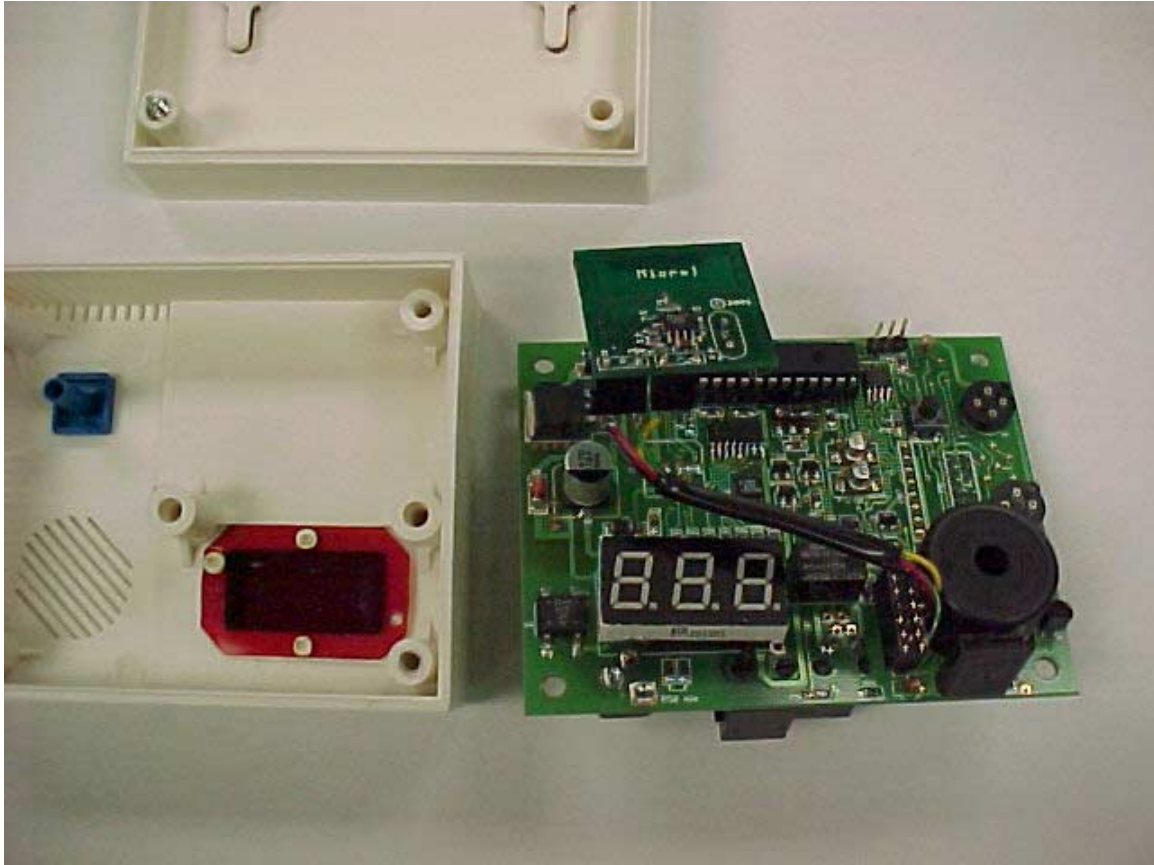
**Qtronics Manufacture, Inc.  
Gas Detector  
FCC ID#: OZE-RFT2001**

**Photo Eight  
Component Side of RF PCB showing Antenna**



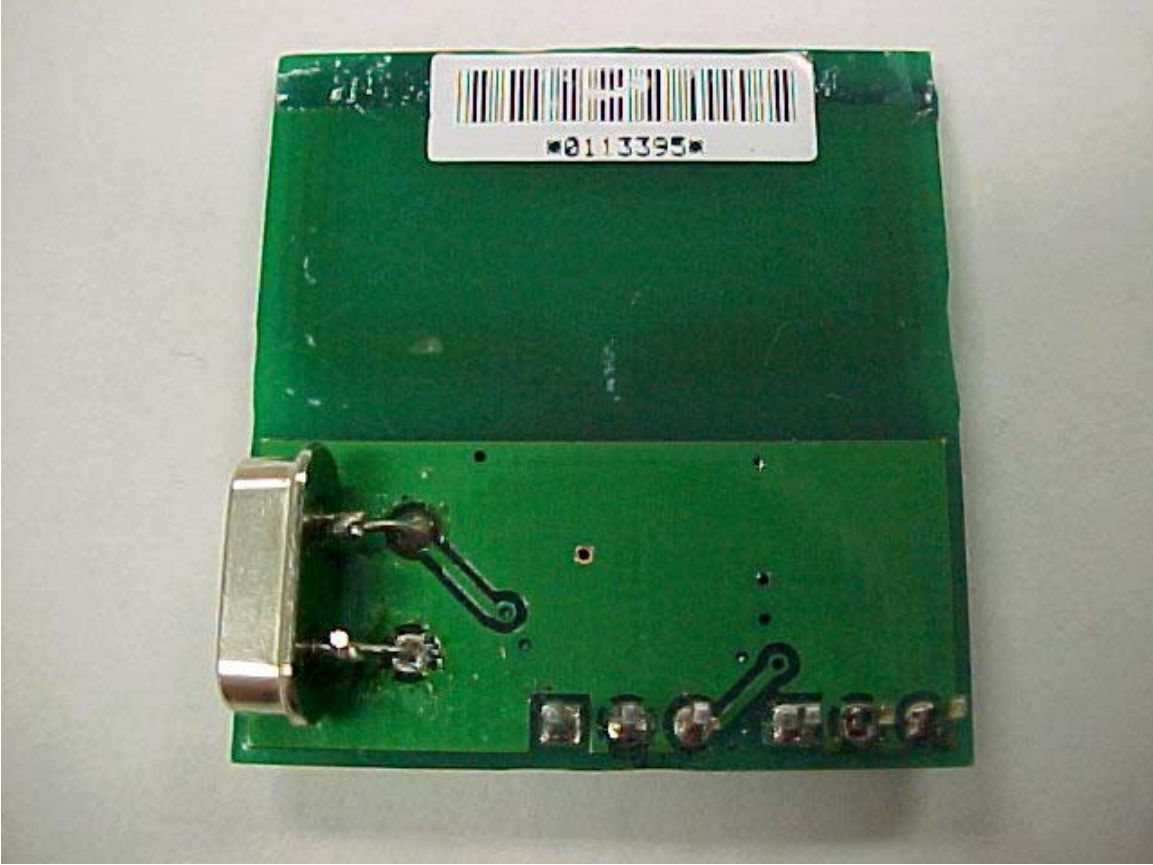
**Qtronics Manufacture, Inc.  
Gas Detector  
FCC ID#: OZE-RFT2001**

**Photo Seven  
Component Side of Digital Board showing RF PCB connected by Wirw**



**Qtronics Manufacture, Inc.**  
**Gas Detector**  
**FCC ID#: OZE-RFT2001**

**Photo Nine**  
**Flip Side of RF PCB showing Ground Plane**



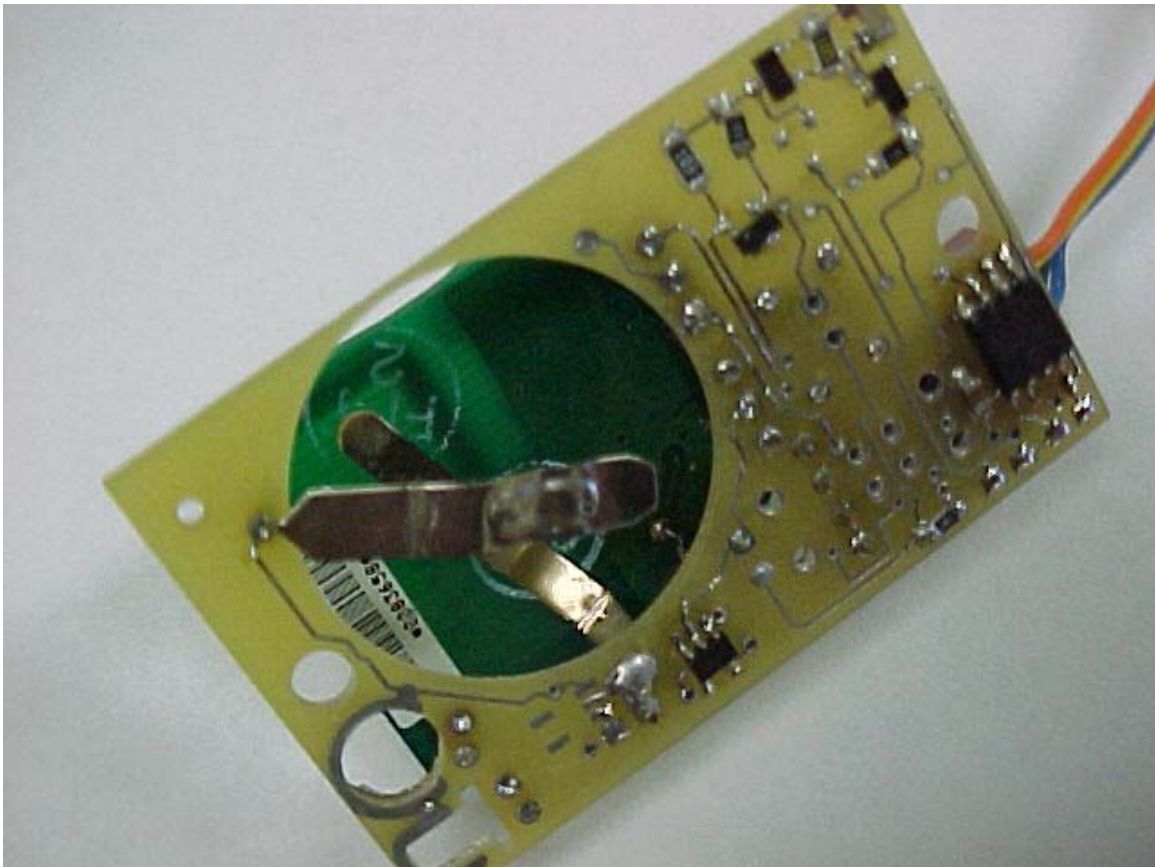
**Qtronics Manufacture, Inc.  
Water Detector  
FCC ID#: OZE-RFT2001**

**Photo Thirteen  
Open for Inspection**



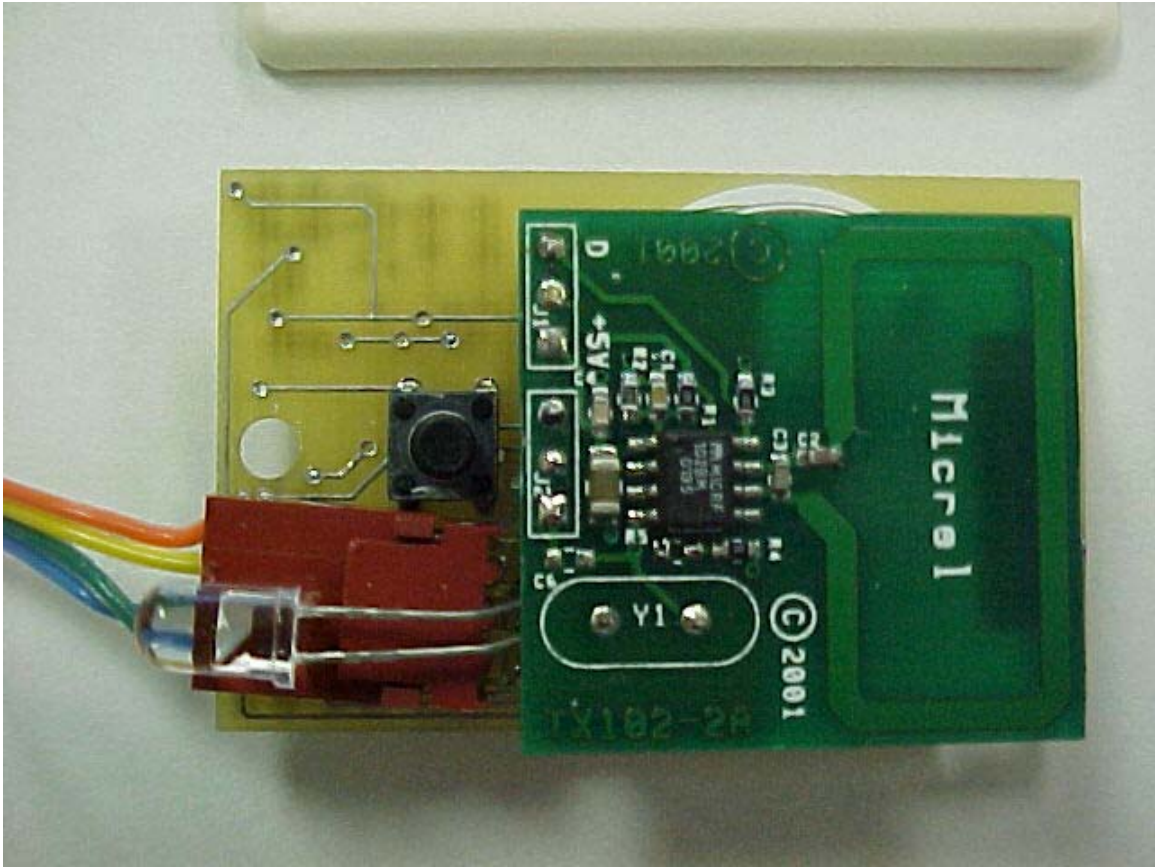
**Qtronics Manufacture, Inc.  
Water Detector  
FCC ID#: OZE-RFT2001**

**Photo Fifteen  
RF PCB from Micrel, same PCB as in Gas Detector  
Battery Contacts as seen through Digital PCB**



**Qtronics Manufacture, Inc.**  
**Water Detector**  
**FCC ID#: OZE-RFT2001**

**Photo Fourteen**  
**RF PCB from Micrel, same PCB as in Gas Detector**





**Qtronics Manufacture, Inc.**  
**Water Detector**  
**FCC ID#: OZE-RFT2001**

**Photo Sixteen**  
**RF PCB from Micrel, same PCB as in Gas Detector**  
**Battery Contacts as seen from side**

