



APPENDIX H
: USER'S MANUAL

MX-1200i Color Touch Screen Owner's Manual



This remote control was Custom Programmed for you by:

For questions about your Custom Programming call:

Custom Programming of a complex home theater and/or a multi-room system is one of the most challenging tasks within an audio/video installation. It involves an intimate knowledge of how the components interact and exact details on the proper sequences of control.

Only a Complete Control dealer has the requisite experience and training to quickly and effectively customize a remote control for true automated operation.

Congratulations on your choice!

MX-1200i Owner's Manual © 2012 Universal Remote Control, Inc.

The information in this manual is copyright protected. No part of this manual may be copied or reproduced in any form without prior written consent from Universal Remote Control, Inc.

UNIVERSAL REMOTE CONTROL, INC. SHALL NOT BE LIABLE FOR OPERATIONAL, TECHNICAL OR EDITORIAL ERRORS/OMISSIONS MADE IN THIS MANUAL.

The information in this manual may be subject to change without prior notice.

Complete Control is a registered trademark of Universal Remote Control, Inc.

All other brand or product names are trademarks or registered trademarks of their respective companies or organizations.



500 Mamaroneck Avenue, Harrison, NY 10528
Phone: (914) 835-4484 Fax: (914) 835-4532

Congratulations!	1
Using the MX-1200i	2
Connecting the Battery Pack	3
Using the Charging Base	3
Displaying the Settings Screen	4
Sleep Settings	5
System	5
Brightness	5
Power	5
Button Light	6
Date and Time	6
Calibration	6
Pickup Settings	6
Sound	7
Factory Default	7
Exit	7
Maintaining Your MX-1200i	8
Specifications	8
USA Limited Warranty Statement	9
Federal Communication Commission Interference Statement	11
Regulatory Information to the user	
Regulatory Information to the user	12
Declaration of Conformity	13
Precautions and Information Concerning Rechargeable Lithium-Ion Batteries	14

Congratulations

Thank you for purchasing the Complete Control MX-1200i touch screen universal remote control. This remote can wirelessly control your devices throughout the home using an RF base station. Controlling your home is simple with the MX-1200i remote.



Brilliant 2.4" color touch screen with audible button presses

The MX-1200i has a programmable 2.4" color touch screen. When any button is pressed, an audible response is heard and the color LCD screen, as well as the remote buttons, will light up.

Fast setup of complex systems via Complete Control PC Program

To fully automate your audio/video system, the programmer must have detailed knowledge of each component and how the system is connected and operated. Only a trained and certified professional audio/video installer can install an MX-1200i remote control in a timely and efficient manner.

User interface customizable for any activity

Each button is customizable for activities such as Watch TV or Listen to Radio. These activities can contain multiple commands (macros) which enable a single button press to turn the needed devices ON or OFF.

Ultra-reliable narrow band RF - compatible with URC 433.92 MHz RF Base Stations.

The MX-1200i can communicate directly to RF base stations, such as the MRF-350i and the MRF-260i. It also natively communicates to URC Lighting via 433 MHz RF. This gives the MX-1200i the ability to control your system without being in direct line-of-sight.

Using the MX-1200i

The MX-1200i's main pages display the activities and devices in your system. Press the MAIN button to view your devices or the activities placed here by your custom installation specialist. Large systems may have more than one page. Press either of the PAGE buttons if you don't see all your devices.

Gently press any screen button with your finger to select an activity or a device. The screen will change to display the buttons you need for that activity/device. The PAGE buttons may reveal additional buttons for some devices and activities.

When you would like to control another device, press the MAIN page button and select a new device button.

The **Main** button always displays main menu pages.

The **Page** buttons display additional pages of controls.

The **Volume** and **Mute** buttons are always available regardless of what screen is displayed.

The **5-way cursor** enables you to navigate through a variety of on-screen menus with ease.



Connecting the Battery Pack

Unlock the rear cover by pressing down on the spring lock at the top of the cover. Remove the cover. For shipment from the factory, the battery is left out of the MX-1200i. Place the battery into the battery compartment, making sure you align the contacts on the battery to the contacts on the MX-1200i. The battery will snap into place when aligned properly. Replace the cover and snap it into place.

Using the Charging Base

Plug the 5V adapter into a power outlet and into the back of the charging base.

Gently place the MX-1200i into the cradle of the charging base. It automatically aligns itself to the contacts on the charging base.

The Status light should immediately light. Red indicates that it is charging. Blue shows that it is fully charged. There is no harm in leaving the MX-1200i on its charging base whenever it is not in use.



Red indicates charging, Blue that the remote is fully charged.

Displaying the Settings Screen

You can enter the settings menu by pressing and holding the MAIN and ENT button for three seconds. The MX-1200i will timeout after it is idle for 30 seconds and return to the previous setting or Main screen. There are two pages of Settings screens. Select a setting by pressing a button on the LCD screen. Press either of the PAGE buttons to access the other page. To go back a step or to get out of the settings screen, press the MAIN button.

There are two pages of Settings screen. To access the other page press either of the PAGE buttons.



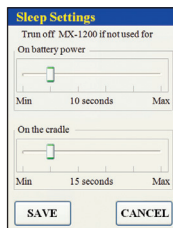
Page buttons reveal the rest of the settings.



Page 2 of the Settings Screen

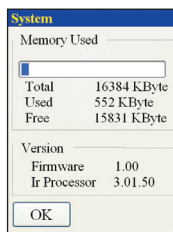
Sleep Settings

Conserve energy by configuring the MX-1200i to fall asleep after a specified amount of time. Select an amount of time by adjusting the slide bar.



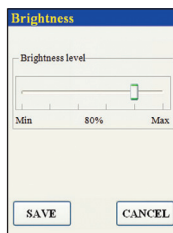
System

The System Information screen displays data about your MX-1200i's operating system, memory etc.



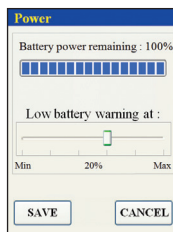
Brightness

Adjust the screen brightness by moving the slider. Min (minimum) is the dimmest setting and Max (maximum) is the brightest setting.



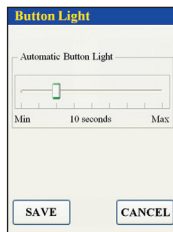
Power

You can display the remaining charge by selecting Power. You can also adjust when the low battery warning screen will appear.



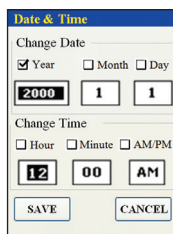
Button Light

You can adjust the brightness of the LEDs that backlight the buttons of the MX-1200i. Move the slider to the left to dim or move it to the right to brighten the backlighting.



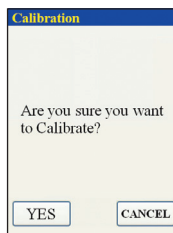
Date and Time

Your MX-1200i may have been programmed to display the time or date on the touch screen. If you need to, you can adjust the time displayed by changing the settings on this screen.



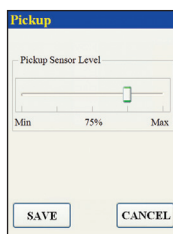
Calibration

If you like, you can calibrate the screen by running the calibration setting. You will need a pen top or PDA stylus to do this. Do not attempt to calibrate using your fingers.



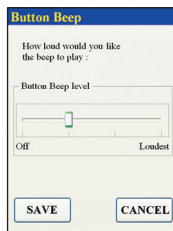
Pickup Settings

You can set your MX-1200i to only turn on when touched, or every time you move it. Adjust the Pickup Sensor Level by sliding the bar to the desired percentage.



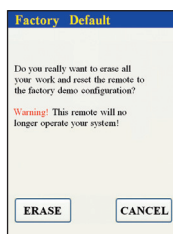
Sound

You can adjust the button beep to Off or Loudest by dragging the slider to your desired position.



Factory Default

WARNING! Only use this button when instructed to by Technical Support. It resets the memory of the MX-1200i to the factory condition. All your programming will be lost!



Exit

When you have finished adjusting Settings, simply tap the Exit button to return to normal operation.

Maintaining Your MX-1200i

Be careful not to scratch the touch screen, only use your finger to tap the LCD touch screen or use a plastic pen top or PDA stylus. Never use a real pen, pencil or any other sharp object on the screen. Keep it away from extreme cold or heat. The MX-1200i is not waterproof. Do not use it in any location that is damp or wet. If you spill water on it, take out the battery pack and let the MX-1200i dry for 48 hours before powering it up again. If you spill coffee or another beverage on it, clean it with distilled water. Make sure no water gets inside the MX-1200i. The touch screen contains a glass element. Don't drop the MX-1200i or impact it against anything.

Use a soft, damp cloth to clean the screen. If the screen still shows finger prints, clean it with watered down window-cleaner. Do not use anything abrasive and don't use too much water, some might leak into the interior.

Precautions & Information: Rechargeable Lithium Ion Batteries

If you will not be using your remote control for an extended period of time, be sure to remove the battery. Do not attempt to disassemble, alter or apply heat to the battery. Use care to avoid dropping the battery or subjecting it to severe impact that could damage the case. The battery should not be immersed in water. Lithium Ion batteries are recyclable. For the address of a recycle drop-off location near you call toll free 1-800-822-8837 or visit <http://www.rbr.com>

Specifications

CPU : ARM 32-bit Cortex-M3 (72MHz)

Memory : 8Mbit SRAM, 64Mbit Flash

Customization Capability : Up to 200 devices and up to 10 pages each for a total of 2000 pages.

Learning Capability : Standard frequencies (15kHz to 460kHz)

Macro Capability : Up to 255 steps each

IR Range (Line of Sight via Infrared) : 30-50 feet, depending on the environment

RF Range (radio frequency) : 50 to 100 feet, depending upon the environment

RF Frequency : 433.92 MHz

Weight : 5.73 ounces (with battery loaded)

Size : 8.46"H x 1.97"W x 1.02" D

Battery : Lithium Ion rechargeable battery included

USA Limited Warranty Statement

Your Universal Remote Control, when delivered to you in new condition, is warranted against defects in materials or workmanship as follows:

UNIVERSAL REMOTE CONTROL, INC. warrants this product against defects in material or workmanship for a period of one (1) year and as set forth below. Universal Remote Control will, at its sole option, repair the product using new or comparable rebuilt parts, or exchange the product for a comparable new or rebuilt product. **In the event of a defect, these are your exclusive remedies.**

This Limited Warranty covers only the hardware components packaged with the Product. It does not cover technical assistance for hardware or software usage and it does not cover any software products whether or not contained in the Product; any such software is provided "AS IS" unless expressly provided for in any enclosed software Limited Warranty.

To obtain warranty service, you must deliver the product, freight prepaid, in its original packaging or packaging affording adequate protection to Universal Remote Control at the address provided in the Owner's Manual. **It is your responsibility to backup any macro programming, artwork, software or other materials that may have been programmed into your unit. It is likely that such data, software, or other materials will be lost during service and Universal Remote Control will not be responsible for any such damage or loss.** A dated purchase receipt, Bill of Sale, Installation Contract or other verifiable Proof of Purchase is required. For product support and other important information visit Universal Remote Control's website: <http://www.UniversalRemote.com> or call the Customer Service Center (914) 835-4484.

This Limited Warranty only covers product issues caused by defects in material or workmanship during ordinary consumer use. It does not cover product issues caused by any other reason, including but not limited to product issues due to commercial use, acts of God, third-party installation, misuse, limitations of technology, or modification of or to any part of the Universal Remote Control product. This Limited Warranty does not cover Universal Remote Control products sold as USED, AS IS, REFURBISHED, so-called "B STOCK" or consumables (such as batteries). This Limited Warranty is invalid if the factory-applied serial number has been altered or removed from the product. This Limited Warranty is valid only in the United States of America. **This Limited Warranty specifically excludes products sold by unauthorized resellers.**

LIMITATION OF REMEDIES

UNIVERSAL REMOTE CONTROL SHALL NOT BE LIABLE FOR ANY INCIDENTAL OR CONSEQUENTIAL DAMAGES FOR BREACH OF ANY EXPRESS OR IMPLIED WARRANTY OR CONDITION ON THIS PRODUCT. IN NO EVENT SHALL UNIVERSAL REMOTE CONTROL BE LIABLE, WHETHER IN CONTRACT OR IN TORT (INCLUDING NEGLIGENCE) FOR DAMAGES IN EXCESS OF THE PURCHASE PRICE OF THE PRODUCT, ACCESSORY OR SOFTWARE, OR FOR ANY INDIRECT, INCIDENTAL, SPECIAL OR CONSEQUENTIAL DAMAGES OF ANY KIND, OR LOSS OF REVENUE OR PROFITS, LOSS OF BUSINESS, LOSS OF INFORMATION OR DATA, SOFTWARE OR APPLICATIONS OR OTHER FINANCIAL LOSS ARISING OUT OF OR IN CONNECTION WITH THE ABILITY OR INABILITY TO USE THE PRODUCTS, ACCESSORIES OR SOFTWARE TO THE FULL EXTENT THESE DAMAGES MAY BE DISCLAIMED BY LAW.

EXCEPT TO THE EXTENT PROHIBITED BY APPLICABLE LAW, THERE IS NO OTHER WARRANTY EXPRESSED OR IMPLIED. UNIVERSAL REMOTE CONTROL WILL NOT BE HELD RESPONSIBLE FOR STATEMENTS MADE BY OTHERS CONCERNING THE MERCHANTABILITY OR FITNESS FOR A PARTICULAR PURPOSE ON THIS PRODUCT.

Some states or jurisdictions do not allow the exclusion or limitation of incidental or consequential damages, or allow limitations on how long an implied warranty lasts, so the above limitations or exclusions may not apply to you. This Limited Warranty gives you specific legal rights and you may have other rights which vary from state to state or jurisdiction to jurisdiction.

REV020708

Federal Communication Commission Interference Statement

This equipment has been tested and found to comply with the limits for a Class B digital device, pursuant to part 15 of the FCC Rules. These limits are designed to provide reasonable protection against harmful interference in a residential installation. This equipment generates, uses and can radiate radio frequency energy and, if not installed and used in accordance with the instructions, may cause harmful interference to radio communications. However, there is no guarantee that interference will not occur in a particular installation. If this equipment does cause harmful interference to radio or television reception, which can be determined by turning the equipment off and on, the user is encouraged to try to correct the interference by one more of the following measures:

- ◆ Reorient or relocate the receiving antenna.
- ◆ Increase the separation between the equipment and receiver.
- ◆ Connect the equipment into an outlet on a circuit different from that to which the receiver is connected.
- ◆ Consult the dealer or an experienced radio/TV technician for help.

Warning!

Changes or modifications not expressly approved by the manufacturer could void the user's authority to operate the equipment.

Note : The manufacturer is not responsible for any Radio or TV interference caused by unauthorized modifications to this equipment. Such modifications could void the user's authority to operate the equipment.

FCC Caution

This device complies with Part 15 of the FCC Rules. Operation is subject to the following two conditions: (1) this device may not cause harmful interference, and (2) this device must accept any interference received, including interference that may cause undesired operation.

Any changes or modifications not expressly approved by the party responsible for compliance could void the authority to operate equipment.

The antenna(s) used for this transmitter must not be co-located or operating in conjunction with any other antenna or transmitter.

Federal Communication Commission (FCC) Radiation Exposure Statement

The device and the antenna for this device must be installed to ensure a minimum separation distance of 20 cm more from a person's body. Other operating configurations should be avoided.

Regulatory Information to the user

■ CE conformity Notice

Products with "CE" marking comply with the R&TTE Directive 1995/5/EC, EMC Directive 2004/108/EC and Low Voltage Directive 2006/95/EEC issued by the commission of the European Community.

1) R&TTE Directive

- Safety : EN 60950-1
- EMC : ETSI EN 301 489-1,3
- RF : ETSI EN 300 220-1,2
: ETSI EN 300

2) EMC Directive

- Emission : EN 55022
- Immunity : EN 55024
- Power : EN-61000-3-2, 3

3) Low Voltage Directive

- Product safety : EN 60950-1

■ Safety instruction for charging internal rechargeable battery of remote control

Use only with EN60950-1 approved as Limited power source and double insulation(□) marked power adaptor & same ratings described on the product label (3.7V/1330mAh).

■ Declaration of Conformity

"Hereby, Universal Remote Control Inc. declares that this MX-1200i is in compliance with the Essential requirements and other relevant provisions of Directive 1999/5/EC."



Universal Remote Control®

Certification	CE 2200
Type No.(Model No.)	MX-1200i
Batch/Serial No.	-
Power Rating	3.7V, 1330mAh
Frequency band	433.92 MHz

Declaration of Conformity

Company Name : Universal Remote Control Inc.
 Company Address : 500 Mamaroneck Avenue, Harrison, NY 10528, U.S.A
www.universalremote.com
 Contact Information : Phone: (914)835-4484 Fax: (914)835-4532
 Brand Name : UNIVERSAL remote control
 Product Name : RF Re-mote Controller
 Model Name : MX-1200i

This product herewith complies with the requirements of EMC Directive (2004/108/EC) and R&TTE Directive(1995/5/EC) issued by the Commission of the European Community

Compliance with these directives implies conformity to the following European Community

- EMC Directive
 - EN 55022
 - EN 55024
 - EN 61000-3-2
 - EN 61000-3-3
- R&TTE Directive
 - EN 60950-1
 - ETSI EN 301-489-1,3
 - ETSI EN 300 220-1,2
 - ETSI EN 300
- Low Voltage Directive
 - EN 60950-1

List of test reports and/or certificate verified compliance with the standards above

- EMC Directive
 - Report No.
 - Testing Laboratory : Gumi College EMC Center
- R&TTE Directive
 - Certificate No.
 - Certificate Body : SIEMIC (No. 2200)

Date of issue : March 23, 2012

Name and signature of authorized person : James Novak
 Senior Product Manager
 Universal Remote Control Inc.

Precautions and Information Concerning Rechargeable Lithium-Ion Batteries

- ◆ If you will not be using your remote control for an extended period of time, be sure to remove the battery
- ◆ Do not attempt to disassemble, alter or apply heat to the battery.
- ◆ Use care to avoid dropping the battery or subjecting it to severe impact that could damage the case.
- ◆ The battery should not be immersed in water.
- ◆ Risk of explosion if battery is replaced by an incorrect type.
- ◆ Dispose of used batteries according to the instructions.
- ◆ Lithium Ion batteries are recyclable. For the address of a recycle drop-off location near you call toll Free 1-800-822-8837 or visit <http://www.rbrc.com>



500 Mamaroneck Avenue, Harrison, NY 10528

Phone: (914) 835-4484 Fax: (914) 835-4532

www.universalremote.com



OCE-0113B Rev 01