

Operating Your System With The Aurora MX-950



**COMPLETE
CONTROL**™

 **Universal Remote Control**®

*This remote control was
Custom Programmed for you by:*

.....
*For questions about your Custom
Programming call:*

.....
*Custom Programming of a complex home theater and/or a multi-room
system is one of the most challenging tasks within an audio/video instal-
lation. It involves an intimate knowledge of how the components interact
and exact details on the proper sequences of control.*

*Only a Complete Control dealer has the requisite experience and training
to quickly and effectively customize a remote control for true automated
operation.*

Congratulations on your choice!

*MX-950 Owners Manual © 2005 Universal Remote Control, Inc.
Front Cover Photo courtesy of Cinema Tech Inc.
Theater and seating by Cinema Tech Inc., www.mycinematech.com*

*The information in this manual is copyright protected. No part of this manual may
be copied or reproduced in any form without prior written consent from Universal
Remote Control, Inc.*

*UNIVERSAL REMOTE CONTROL, INC. SHALL NOT BE LIABLE FOR OPERATIONAL,
TECHNICAL OR EDITORIAL ERRORS/OMISSIONS MADE IN THIS MANUAL.*

The information in this manual may be subject to change without prior notice.

*Complete Control is a registered trademark of Universal Remote Control, Inc.
Entertainment Made Simple is a trademark of Universal Remote Control, Inc.*

*All other brand or product names are trademarks or registered trademarks of their
respective companies or organizations.*



*Universal Remote Control, Inc.
500 Mamaroneck Avenue, Harrison, NY 10528
Phone: (914) 835-4484 Fax: (914) 835-4532*

TABLE OF CONTENTS

<u>Introduction</u>	1
<u>LCD Screen</u>	1
<u>Optional RF “No Rules” Operation</u>	2
<u>Connecting the Battery Pack</u>	3
<u>Using the Charging Base</u>	4
<u>Programming the Aurora</u>	4
<u>Selecting a New “Activity”</u>	5
<u>Using the Aurora to Control an “Activity”</u>	6
<u>Displaying the Setup Screens</u>	7
<u>Setting the Clock</u>	8
<u>Backlight Settings</u>	8
<u>LCD Display Settings</u>	9
<u>Sound Volume</u>	10
<u>Pickup Sensor Settings</u>	10
<u>Indicator Settings</u>	11
<u>Power Settings</u>	11
<u>System and Version Information Displays</u>	12
<u>Warranty</u>	12
<u>Specifications</u>	12
<u>Information To The User</u>	13
<u>Warning (Part 15.21)</u>	13

Congratulations!

You've purchased a unique synthesis of hardware and software engineering, the Complete Control Aurora. The Aurora achieves a magnificent combination of power and flexibility, simplifying and automating operation of even the most complex system.

Automatic Backlighting

The integral motion sensor detects any movement of the remote control and automatically backlights the screen. You do not have to press any button to display the screen. Any movement of the Aurora renews the backlighting.

Integrated Sound Signaling

The Aurora incorporates a small speaker for sound playback. Your professional installer may use this speaker to signal the end of a sophisticated automation routine with a beep, a tune or even recorded speech.



LCD Screen

The Aurora is equipped with a bright easy to read LCD screen which your installer will customize for your system. The screen labels the ten hard buttons (easy to find by feel) positioned on either side of the screen. Your installer can combine two buttons to create a single row (left) that can be accessed by either adjacent button. This simplifies operation for the entire family and enables convenient operation for both left and



right-handed users. In addition, the screen can be "split" so each button is allocated to a specific function (right). This provides the power user with the ability to see and operate up to 10 functions on a single screen.



Optional RF “No Rules” Operation

In combination with a Complete Control RF Base Station, the Aurora can control your system without being in line-of-sight of the equipment.

Either the MRF-300 or the MRF-250 RF base station is compatible with the Aurora. Both incorporate RF addressing. RF Addressing gives you the ability to control equipment locations throughout your home, even if they are concealed in other rooms or are behind closed doors.

1. The Aurora sends radio waves in every direction, so you don't have to point the remote anymore!



2. The RFX-150 RF Sensor can be freely positioned for optimal reception.



3. The MRF-300's built-in Front Blaster sends commands to components in the same cabinet space as the MRF-300.



4. Self-adhesive “Flashers” affix to the Infrared sensors on the front panels of your components. The Flashers relay commands to components out of sight of the MRF-300's Front Blaster. The flashers plug in to the MRF-300's rear flasher line outputs via their 10 foot cables. Uniquely, the MRF-300 can also connect to rear panel IR Inputs via its adjustable IR Line Outputs.

Connecting the Battery Pack

Open the battery cover by depressing the release and pulling back the cover on the back of the control. Remove the cover.



Observe the three contacts for the battery at the top right of the battery compartment.



Observe the contacts on the battery



First, angle the battery so that the contacts connect to the contacts inside the battery compartment. Then let the base of the battery do wn. Apply gentle pressure against the spring action of the contacts to fit the battery into place.



Now, replace the battery cover.

Using the Charging Base

Plug the 5V DC adapter into a power outlet and into the back of the charging base.

Gently place the Aurora into the cradle of the charging base.

The Status light should immediately light. Red indicates that it is charging. Blue shows that it is fully charged. There is no harm in leaving the Aurora on its charging base whenever it is not in use. The Lithium Ion battery cannot be overcharged.



The Aurora on it's Charger.

Programming the Aurora

The Aurora is programmed via a Windows PC equipped with a USB port (programming cable included), using our proprietary software, Aurora Editor. You can download this software from our website:

www.universalremote.com

Basic setup takes only a few minutes with this software. However, to fully automate an audio/video system the user must have a detailed knowledge of how the system is connected and operated. We highly recommend that you use a professional audio/video installer to program your Aurora so you will be able to enjoy all the benefits of the Aurora as well as one touch operation via macros.

Selecting a New "Activity"

The Aurora's WATCH and LISTEN buttons display the activities you can control with your Aurora. When you want to watch something else (a DVD movie, a videotape or an HDTV broadcast), simply press the WATCH button and select the new activity. When you want to listen to the radio or to a CD, touch the LISTEN button and select what you would like to listen to.

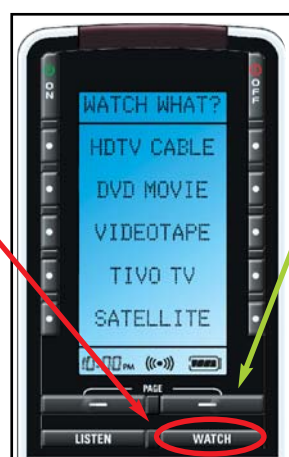
Your installer will have programmed the button you pressed to totally configure your system to watch or listen to whatever you selected. Now, the screen will change, and all of the LCD buttons will be reconfigured to give you full control of your system while watching or listening to your selection!

When you press the LISTEN button, you can see the most frequently used activities you have for listening in your system.



Press either of the PAGE buttons to see any other available choices. You may have only one page or your system may have several pages of "Listening Activities".

When you press the WATCH button, you can see the most frequently used activities you have for watching the sources in your system.



Press either of the PAGE buttons to see any other available choices. You may have only one page or your system may have several pages of "Watching Activities".

Using the Aurora to Control an “Activity”

Once you’ve selected a new activity, the Aurora displays the title of the activity at the top of the screen. Below the title, the LCD displays the customized names of any special features you need for the activity. All the hard buttons of the Aurora have now changed to functions optimized for this activity.

The Title displays what activity you can control.

Press either of the PAGE buttons to see any other available choices. You may have only one page or your system may have several pages of special features for this activity.

The Volume and Mute buttons always control the sound regardless of what screen is displayed.

The transport buttons (Play, Stop, Back, Ahead and Pause) operate when the selected activity requires them.



The LCD button labels describe special features for this activity. When there are two functions, you press the corresponding button, when a single function is listed, you can press either the left or the right side button.

The Channel buttons operate when the selected activity requires them.

The 4 way cursor buttons enable you to navigate on screen guides and menus with ease.

The number buttons operate when the selected activity requires them.

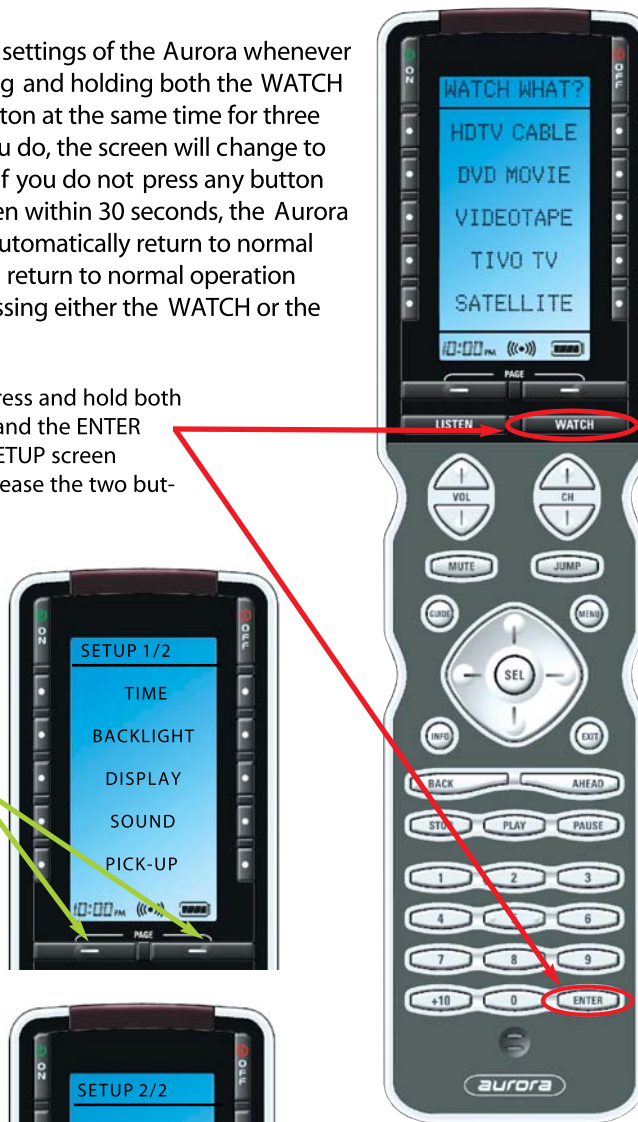
Displaying the Setup Screens

You can adjust the settings of the Aurora whenever you like by pressing and holding both the WATCH and the ENTER button at the same time for three seconds. When you do, the screen will change to the SETUP screen. If you do not press any button on the SETUP screen within 30 seconds, the Aurora will time out and automatically return to normal operation. You can return to normal operation before that by pressing either the WATCH or the LISTEN button.

At the same time, press and hold both the WATCH button and the ENTER button. When the SETUP screen appears, you can release the two buttons.

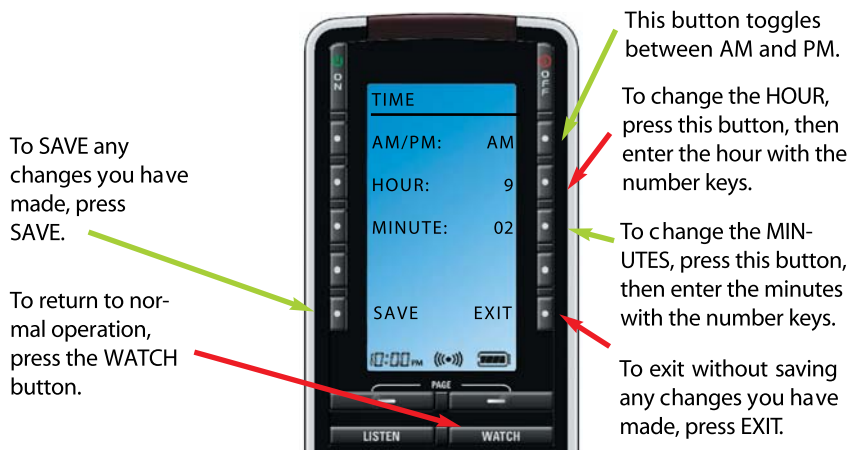
There are two Setup screens. To view the other, press either of the PAGE buttons.

To adjust one of the settings, press either the left or the right hand button.



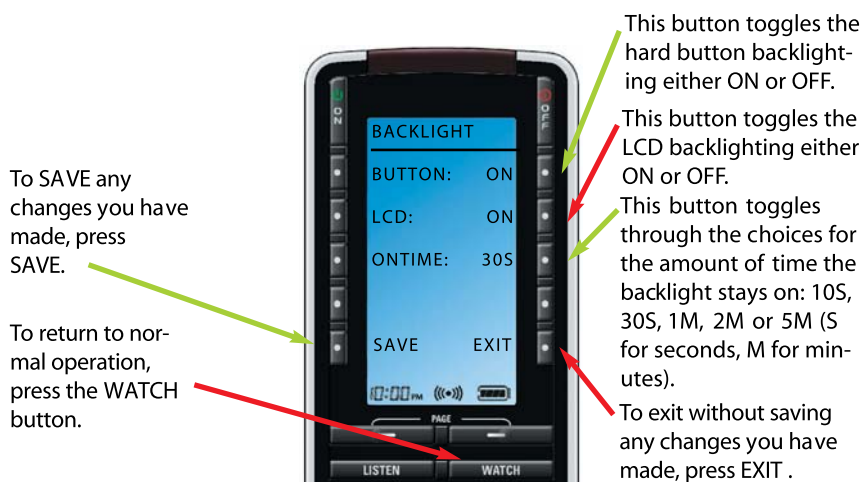
Setting the Clock

Your Aurora may have been programmed to display the time. If so, you can correct the time displayed by changing the settings on this screen.



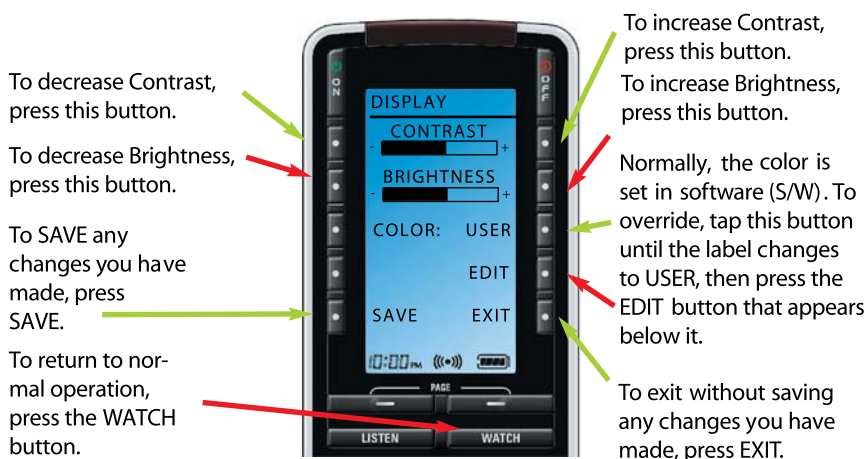
Backlight Settings

The Aurora can backlight both the hard buttons and the LCD display. If you always use your Aurora in good lighting, you can extend battery life by turning off the LCD or hard button backlighting or by reducing the amount of time the backlight stays on. The backlighting can either be turned on automatically when you pick up the Aurora or when you press any button (to set these options see page 10 under the heading Pickup Sensor Settings).



LCD Display Settings

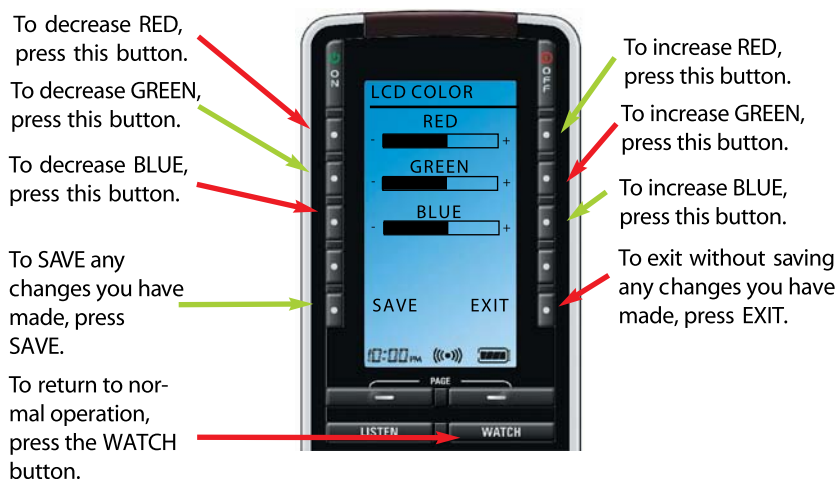
You can adjust the brightness, contrast and color of the Aurora's backlighting. As you make adjustments, you'll see the display change.



Note : User Editing of the LCD Color

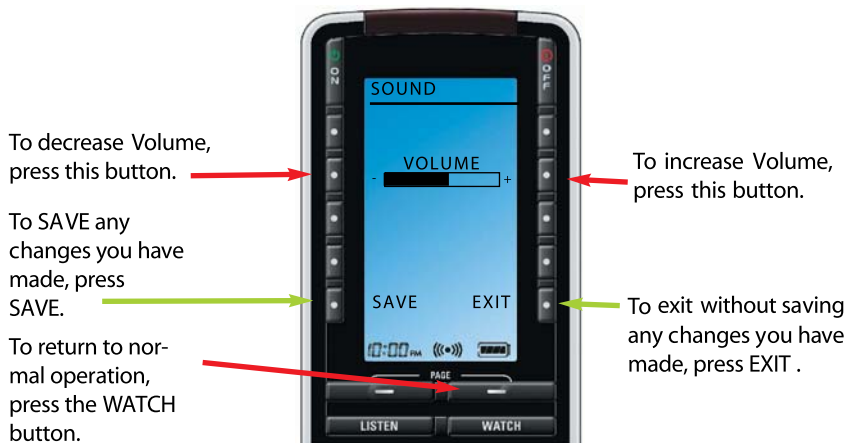
In the software, the installer may set the color for each activity. If you override these settings, you will set one color for all screens, regardless of the activity.

To adjust the LCD color, use these settings:



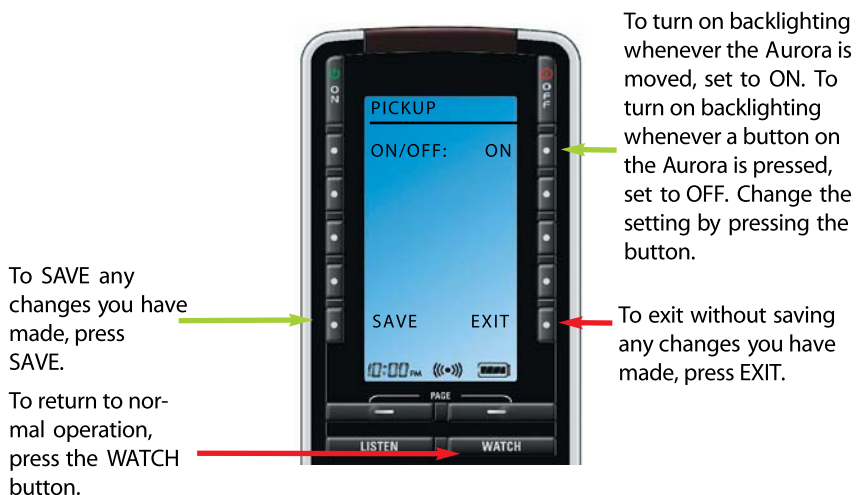
Sound Volume

Your Aurora may have been programmed to make sounds. This is optional, and some professional installers may prefer to keep it silent. However, you can adjust the volume to any level you like by adjusting the volume control here.

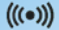



Pickup Sensor Settings

You can set your Aurora to only turn on when any button is touched, or any time you move it. You set the amount of time the backlight stays on page 8, under the section Backlight Settings.



Indicator Settings

The Aurora can display a flashing IR (infrared) icon  whenever a command is sent to a component after a button press or a macro step. You can also choose whether you will display the clock or the battery charge level.



To turn the IR indicator on or off, press this button.

To turn the Clock on or off, press this button.

To turn the battery charge indicator on or off, press this button.

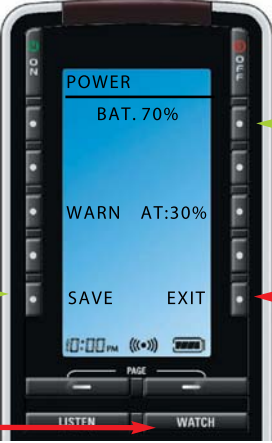
To exit without saving any changes you have made, press EXIT.

To SAVE any changes you have made, press SAVE.

To return to normal operation, press the WATCH button.

Power Settings

You can set your Aurora to display the Low Battery warning at a power level between 20% and 80% (in 20% increments).



Press this button to cycle through the available battery level settings (20%, 40%, 60% or 80%).

To exit without saving any changes you have made, press EXIT.

To SAVE any changes you have made, press SAVE.

To return to normal operation, press the WATCH button.

System and Version Information Displays

Should you be curious, the System display indicates how much of the memory your configuration uses, while the Version indicates what firmware and software versions were used to program your Aurora.



Warranty

The Aurora is covered against any manufacturing defects or faults in workmanship for a period of one year from the date of purchase when purchased from an authorized Complete Control dealer. Units purchased from online auction sites or other unauthorized resellers have no warranty. This warranty does not cover the following items:

- ♦ Damage from misuse, neglect, or acts of nature.
- ♦ Products that have been modified or incorporated into other products.
- ♦ Products purchased more than 12 months ago.
- ♦ Units purchased from unauthorized dealers or companies.

Specifications

Microprocessor: 206MHz RISC
 Memory - 16 Megabytes of Flash Memory (for User Configuration)
 Devices - Supports up to 255 Devices
 Pages - Supports up to 255 Pages on each Device
 Learning Capability - Standard frequencies (15kHz to 460kHz)
 Macro Capability - Up to 255 steps each, however nesting is allowed
 IR Range (Line of Sight via Infrared): 30-50 feet, depending on the environment
 RF Range (radio frequency): 50 to 100 feet, depending upon the environment
 RF Frequency: 418MHz
 Weight: 10.4 oz. (with batteries)
 Size: 7.17" x 4.76" x 1.18"
 Batteries: Lithium Ion battery pack included

Information To The User

This equipment has been tested and found to comply with the limits for a Class B digital device, pursuant to part 15 of the FCC Rules. These limits are designed to provide reasonable protection against harmful interference in a residential installation. This equipment generates, uses and can radiate radio frequency energy and, if not installed and used in accordance with the instructions, may cause harmful interference to radio communications. However, there is no guarantee that interference will not occur in a particular installation. If this equipment does cause harmful interference to radio or television reception, which can be determined by turning the equipment off and on, the user is encouraged to try to correct the interference by one more of the following measures:

- ◆ Reorient or relocate the receiving antenna.
- ◆ Increase the separation between the equipment and receiver.
- ◆ Connect the equipment into an outlet on a circuit different from that to which the receiver is connected.
- ◆ Consult the dealer or an experienced radio/TV technician for help.

Warning (Part 15.21)

Changes or modifications not expressly approved by the manufacturer could void the user's authority to operate the equipment.

MEMO



 **Universal Remote Control®**

500 Mamaroneck Avenue, Harrison, NY 10528

Phone: (914) 835-4484 Fax: (914) 835-4532

www.universalremote.com