



APPENDIX I
: USER'S MANUAL

Operating Your System With The MX-900i



**COMPLETE
CONTROL**™

 **Universal Remote Control**®

*This remote control was
Custom Programmed for you by:*

For questions about your Custom Programming call:

Custom Programming of a complex home theater and/or a multi-room system is one of the most challenging tasks within an audio/video installation. It involves an intimate knowledge of how the components interact and exact details on the proper sequences of control.

Only a Complete Control dealer has the requisite experience and training to quickly and effectively customize a remote control for true automated operation.

Congratulations on your choice!

*MX-900i Owners Manual © 2006 Universal Remote Control, Inc.
Front Cover Photo courtesy of Robert Ridenour of Connected Technologies,
www.connected-technologies.com*

The information in this manual is copyright protected. No part of this manual may be copied or reproduced in any form without prior written consent from Universal Remote Control, Inc.

UNIVERSAL REMOTE CONTROL, INC. SHALL NOT BE LIABLE FOR OPERATIONAL, TECHNICAL OR EDITORIAL ERRORS/OMISSIONS MADE IN THIS MANUAL.

The information in this manual may be subject to change without prior notice.

*Complete Control is a registered trademark of Universal Remote Control, Inc.
Entertainment Made Simple is a trademark of Universal Remote Control, Inc.*

All other brand or product names are trademarks or registered trademarks of their respective companies or organizations.



Universal Remote Control®

*Universal Remote Control, Inc.
500 Mamaroneck Avenue, Harrison, NY 10528
Phone: (914) 835-4484 Fax: (914) 835-4532*

TABLE OF CONTENTS

Introduction	1
The LIGHT Button	1
Optional RF “No Rules” Operation	2
Installing Batteries	3
Programming the MX-900i	4
Selecting a New “Activity”	5
Using the MX-900i to Control an “Activity”	6
Displaying the Setup Screen	7
Selecting from the Setup Screen	7
Setting the LCD	8
Sound Volume	10
Light Settings	10
System Settings	11
Version Information Displays	11
Warranty	12
Specifications	13
Information To The User	14
Warning	14

Congratulations!

You've purchased a unique synthesis of hardware and software engineering, the Complete Control MX-900i. The MX-900i achieves a magnificent combination of power and flexibility, simplifying and automating operation of even the most complex system.

One Touch Blue Backlighting

Simply press the LIGHT button to backlight the screen.

Integrated Sound Signaling

The MX-900i incorporates a small speaker for beeps. Anytime you press a button, the MX-900i signals that it has understood your command with a beep sound.

Custom Labeled Buttons

The MX-900i is equipped with a bright easy to read LCD screen which labels the six buttons to the right of the screen. These button labels change based on what you are watching or listening to. Thus, if you have selected Watching TV, you will see a list of buttons that are useful to that activity, while if you select DVD, the buttons will control the DVD.



LIGHT Button

Press the Light button on the side of the MX-900i to backlight the LCD display and all of the buttons.

Optional RF “No Rules” Operation

In combination with a Complete Control RF Base Station, the MX-900i can control your system without being in line-of-sight of the equipment.

Either the MRF-350i or the RFX-250i RF base station is compatible with the MX-900i. Both incorporate RF addressing. RF Addressing gives you the ability to control equipment locations throughout your home, even if they are concealed in other rooms or are behind closed doors.

1. The MX-900i sends radio waves in every direction, so you don't have to point the remote anymore!



2. The RFX-250i RF Sensor can be freely positioned for optimal reception.

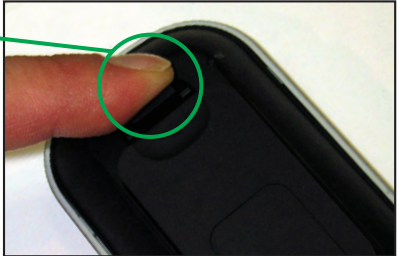
3. The MRF-350i's built-in Front Blaster sends commands to components in the same cabinet space as the MRF-350i.



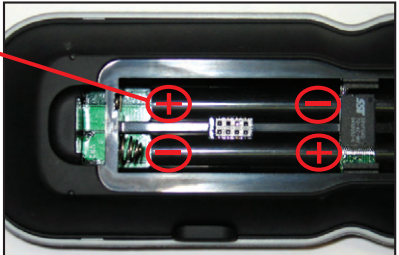
4. Self-adhesive “Flashers” affix to the Infrared sensors on the front panels of your components. The Flashers relay commands to components out of sight of the MRF-350i's Front Blaster. The flashers plug in to the MRF-350i's rear flasher line outputs via their 10 foot cables. Uniquely, the MRF-350i can also connect to rear panel IR Inputs via its adjustable IR Line Outputs.

Installing Batteries

Open the battery cover by pressing the release and pulling back the cover on the back of the control. Remove the cover.



Observe the + and - polarity indications inside the battery compartment.



Place the four AAA batteries into their positions in the battery compartment observing the + and - polarity indicators on the batteries.



Now, replace the battery cover by inserting the hinged end in first, then snapping the cover back into place.

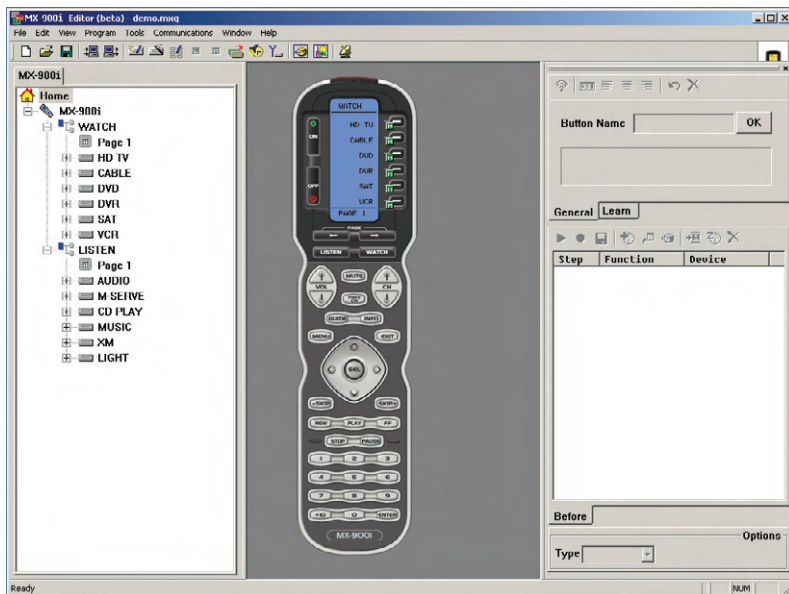


Programming the MX-900i

The MX-900i is programmed via a Windows PC equipped with a USB port (programming cable included), using our proprietary software, MX-900i Editor. You can download this software from our website:

www.universalremote.com

Basic setup takes only a few minutes with this software. However, to fully automate an audio/video system the user must have a detailed knowledge of each component, you the user (and your preferences) and how the system is connected and operated. We highly recommend that you use a professional audio/video installer to program your MX-900i so you will be able to enjoy all the benefits of the MX-900i as well as one touch operation via macros.



Selecting a New “Activity”

The MX-900i’s WATCH and LISTEN buttons display the activities you can control with your MX-900i. When you want to watch something else (a DVD movie, a videotape or an HDTV broadcast), simply press the WATCH button and select the new activity. When you want to listen to the radio or to a CD, touch the LISTEN button and select what you would like to listen to.

Your installer will have programmed the button you pressed to totally configure your system to watch or listen to whatever you selected. Now, the screen will change, and all of the LCD buttons will be reconfigured to give you full control of your system while watching or listening to your selection!

When you press the LISTEN button, you can see the most frequently used activities you have for listening in your system.

When you press the WATCH button, you can see the most frequently used activities you have for watching in your system.



PAGE DISPLAY

At the bottom of the LCD screen, the page display informs you if there are other pages of buttons available.



Press either of the PAGE buttons to see any other available choices.

Using the MX-900i to Control an “Activity”

Once you’ve selected a new activity, the MX-900i displays the title of the activity at the top of the screen. Below the title, the LCD displays the customized names of any special features you need for the activity. All the hard buttons of the MX-900i have now changed to functions optimized for this activity.

The Title displays what activity you can control.

Press either of the PAGE buttons to see any other available choices.

The Volume and Mute buttons always control the sound regardless of what screen is displayed.

The transport buttons (Play, Stop, Skip-, Skip+, FF, REW and Pause) operate when the selected activity requires them (for example, if you watch CABLETV with a TiVo type of DVR, these buttons will control the built-in DVR, while if you are watching a DVD, these buttons will control the DVD player).



The LCD button labels describe special features for this activity.

The Channel and Previous Channel buttons will change channels when you have selected an activity like Watch CABLETV or Watch SAT TV .

The 4 way cursor buttons enable you to navigate on screen guides and menus with ease.

The Number keypad will enter numbers for the activity you’ve selected. Thus, for watching Cable TV, you use the number keypad to enter channel numbers, while when listening to CD, the number keypad enters track numbers.

Displaying the Setup Screen

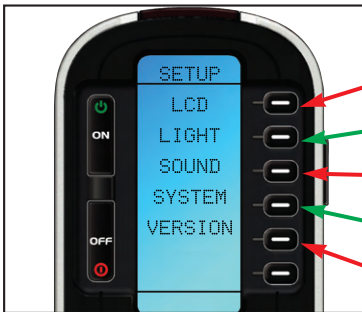
You can adjust the settings of the MX-900i whenever you like by pressing and holding both the WATCH and the ENTER button at the same time for three seconds. When you do, the screen will change to the SETUP screen. If you do not press any button on the SETUP screen within 30 seconds, the MX-900i will time out and automatically return to normal operation. You can return to normal operation before that by pressing either the WATCH or the LISTEN button.

At the same time, press and hold both the WATCH button and the ENTER button. When the SETUP screen appears, you can release the two buttons.



Selecting from the Setup Screen

Simply touch the button for the setting you'd like to adjust:



LCD - The appearance of the screen.

LIGHT - What the LIGHT button does.

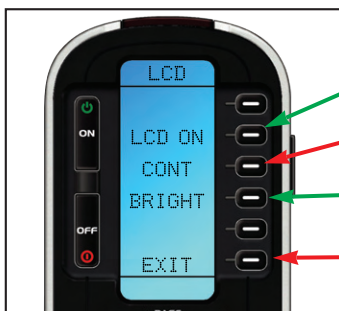
SOUND - The volume of the beeps.

SYSTEM - The battery low warning.

VERSION - No adjustments are possible. Displays factory info.

Setting the LCD

With these settings, you can set the MX-900i to constantly display the LCD when not in use, or show a blank screen when not in use. Additionally, you can control the contrast of the screen.



To activate the LCD On/Off setting, press this button. See below.

To activate the CONTRAST setting, press this button. See the next page.

To activate the BRIGHTNESS setting, press this button. See the next page.

To exit without saving any changes you have made, press EXIT.

LCD Timer Setting:

If you set the LCD to OFF, the timer settings will appear. The LCD will go blank after waiting the interval you set here by adjusting the LEFT and RIGHT arrow keys.

The timer can be set to turn off the LCD between 10 seconds and 20 minutes.

The Timer Interval is displayed here.

To SAVE any changes you have made, press SAVE.

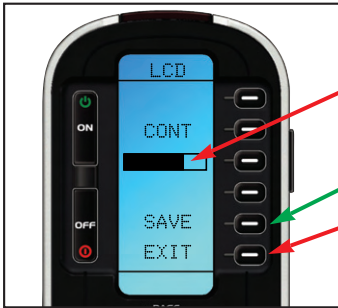
To exit without saving any changes you have made, press EXIT.

To change the timer interval, press the LEFT or RIGHT arrow keys.



Setting LCD Contrast

You can adjust the contrast of the LCD screen using the LEFT and RIGHT arrow keys once the LCD contrast screen has been selected (shown on the previous page).



The current CONTRAST is displayed here via a bar graph.

To SAVE any changes you have made, press SAVE.

To exit without saving any changes you have made, press EXIT.

Adjust the CONTRAST setting with the LEFT and RIGHT keys as shown in the previous pages.

Setting LCD Brightness

You can adjust the brightness of the LCD screen using the LEFT and RIGHT arrow keys once the LCD Brightness screen has been selected (shown on the previous page).



The current Brightness is displayed here as a bar graph.

To SAVE any changes you have made, press SAVE.

To exit without saving any changes you have made, press EXIT.

Adjust the LCD brightness with the LEFT and RIGHT keys as shown in the previous pages.

Light Settings

You can adjust the backlighting of the remote in two additional ways:

1. You can turn on/off the LCD and the hard button backlighting.
2. You can select the amount of time the lighting stays on after the last button press from a range of values between 10 seconds and 90 seconds.



Change whether the backlighting is on or off by pressing this button.

If you want the backlighting always OFF, set it to OFF.

If you would like the backlighting on, select ON.




The current timer setting is displayed here in seconds.

Adjust the backlighting timer setting with the LEFT and RIGHT keys as shown in the previous pages.

Sound Volume

Your MX-900i beeps whenever a button is pressed. However, you can adjust the volume of the beep to one of four levels as shown here:



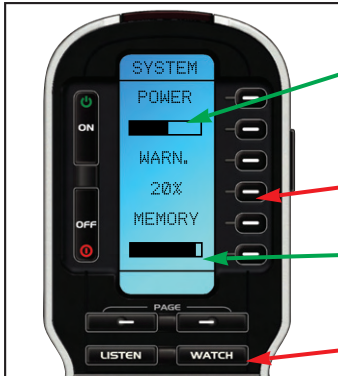
	OFF
	SLIGHT BEEP
	MODERATE BEEP
	LOUDEST BEEP

The current Beep volume is displayed here as a "bar".

Adjust the volume of the beep by TAPPING the LEFT and RIGHT arrow keys as shown in the previous pages.

System Settings

You can set your MX-900i to display the Low Battery warning at a power level between 0% and 20% (in 5% increments).



The Power bar indicates available power with Black.

Press here to adjust the battery warning level.

The Memory bar indicates available memory with Black. The memory in use is White.

To exit, press WATCH.

Version Information Displays

Should you be curious, the Version indicates what firmware and software versions were used to program your MX-900i.



To exit, press WATCH.

USALimited Warranty Statement

Your Universal Remote Control, when delivered to you in new condition, is warranted against defects in materials or workmanship as follows: UNIVERSALREMOTE CONTROL, INC. warrants this product against defects in material or workmanship for a period of one(1) year and as set forth below. Universal Remote Control will, at its sole option, repair the product using new or comparable rebuilt parts, or exchange the product for a comparable new or rebuilt product. In the event of a defect, these are your exclusive remedies.

This Limited Warranty covers only the hardware components packaged with the Product. It does not cover technical assistance for hardware or software usage and it does not cover any software products whether or not contained in the Product; any such software is provided "AS IS" unless expressly provided for in any enclosed software Limited Warranty.

To obtain warranty service, you must deliver the product, freight prepaid, in its original packaging or packaging affording adequate protection to Universal Remote Control at the address provided in the Owner's Manual. It is your responsibility to backup any macroprogramming, artwork, software or other materials that may have been programmed into your unit. It is likely that such data, software, or other materials will be lost during service and Universal Remote Control will not be responsible for any such damage or loss. A dated purchase receipt, Bill of Sale, Installation Contract or other verifiable Proof of Purchase is required. For product support and other important information visit Universal Remote Control's website: <http://www.UniversalRemoteControl.com> or call the Universal Remote Control Customer Service Center (914) 835-4484.

This Limited Warranty only covers product issues caused by defects in material or workmanship during ordinary consumer use. It does not cover product issues caused by any other reason, including but not limited to product issues due to commercial use, acts of God, third-party installation, misuse, limitations of technology, or modification of or to any part of the

Universal Remote Control product. This Limited Warranty does not cover Universal Remote Control products sold as USED, AS IS, REFURBISHED, so-called "B-STOCK" or consumables (such as batteries). This Limited Warranty is invalid if the factory-applied serial number has been altered or removed from the product. This Limited Warranty is valid only in the United States of America. This Limited Warranty specifically excludes products sold by unauthorized resellers.

UNIVERSAL REMOTE CONTROL SHALL NOT BE LIABLE FOR ANY INCIDENTAL OR CONSEQUENTIAL DAMAGES FOR BREACH OF ANY EXPRESS OR IMPLIED WARRANTY OR CONDITION ON THIS PRODUCT. EXCEPT TO THE EXTENT PROHIBITED BY APPLICABLE LAW, THERE IS NO OTHER WARRANTY EXPRESSED OR IMPLIED. UNIVERSAL REMOTE CONTROL WILL NOT BE HELD RESPONSIBLE FOR STATEMENTS MADE BY OTHERS CONCERNING THE MERCHANTABILITY OR FITNESS FOR A PARTICULAR PURPOSE ON THIS PRODUCT. Some states or jurisdictions do not allow the exclusion or limitation of incidental or consequential damages, or allow limitations on how long an implied warranty lasts, so the above limitations or exclusions may not apply to you. This Limited Warranty gives you specific legal rights and you may have other rights which vary from state to state or jurisdiction to jurisdiction.

Specifications

Memory - 4 Megabits of Flash Memory (for User Configuration)

Devices - Flexible, typically can support up to 40 Devices

Pages - Flexible, typically can support up to 40 Pages on each Device

Learning Capability - Standard frequencies (15kHz to 100kHz)

Macro Capability - Up to 255 steps each, however nesting is allowed

IR Range (Line of Sight via Infrared): 30-50 feet, depending on the environment

RF Range (radio frequency): 50 to 100 feet, depending on the environment

RF Frequency: 433.92MHz

Weight: 14 ounces (with batteries)

Size: 8" H x 2.25" W x 1.25" D

Batteries: 4 AAA Batteries

Information To The User

This equipment has been tested and found to comply with the limits for a Class B digital device, pursuant to part 15 of the FCC Rules. These limits are designed to provide reasonable protection against harmful interference in a residential installation.

This equipment generates, uses and can radiate radio frequency energy and, if not installed and used in accordance with the instructions, may cause harmful interference to radio communications.

However, there is no guarantee that interference will not occur in a particular installation. If this equipment does cause harmful interference to radio or television reception, which can be determined by turning the equipment off and on, the user is encouraged to try to correct the interference by one more of the following measures:

- ◆ Reorient or relocate the receiving antenna.
- ◆ Increase the separation between the equipment and receiver.
- ◆ Connect the equipment into an outlet on a circuit different from that to which the receiver is connected.
- ◆ Consult the dealer or an experienced radio/TV technician for help.

Warning

Changes or modifications not expressly approved by the manufacturer could void the user's authority to operate the equipment.

Note : The manufacturer is not responsible for any Radio or TV interference caused by unauthorized modifications to this equipment. Such modifications could void the user's authority to operate the equipment.

FC CE



 **Universal Remote Control®**

500 Mamaroneck Avenue, Harrison, NY 10528

Phone: (914) 835-4484 Fax: (914) 835-4532

www.universalremote.com