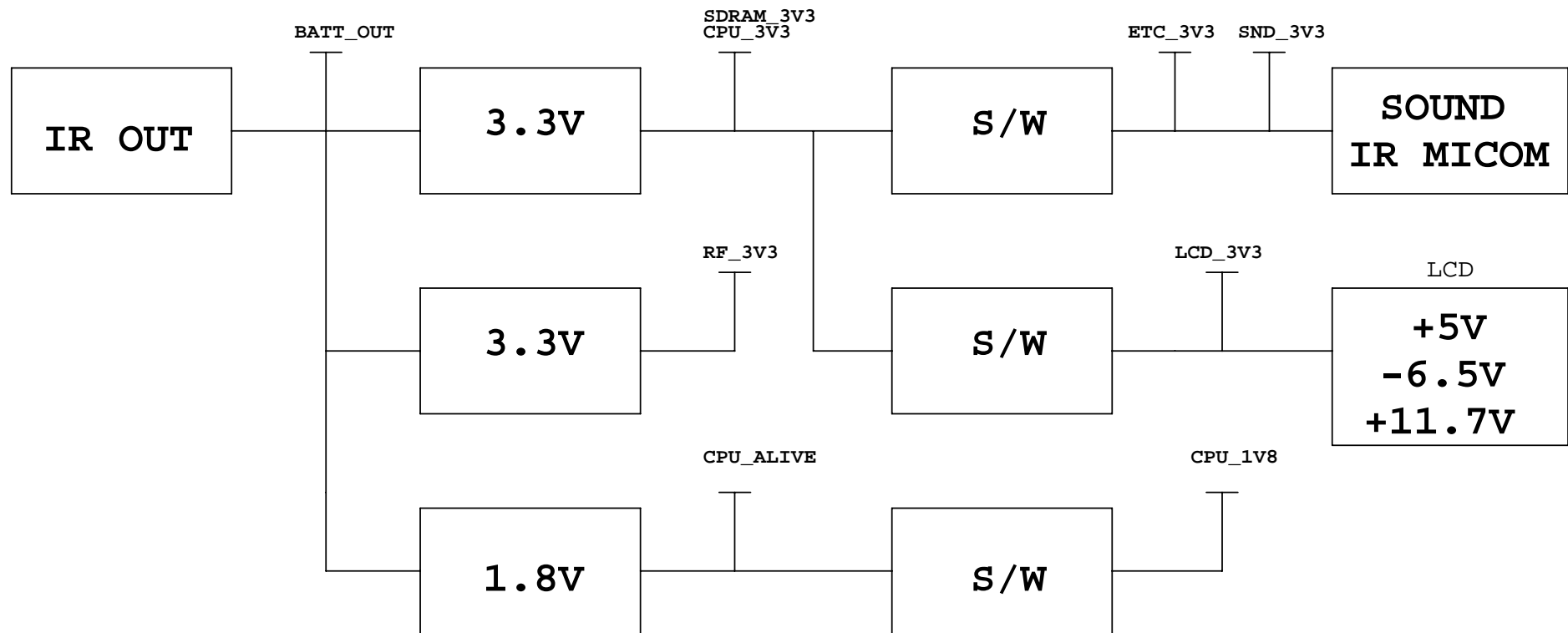


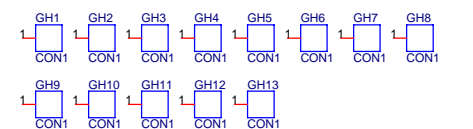
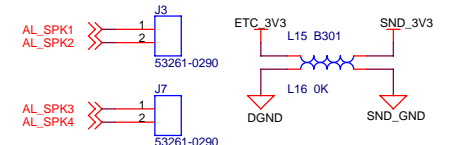
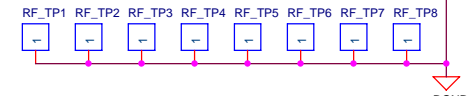
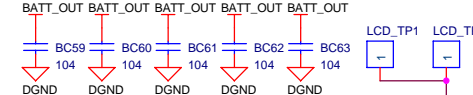
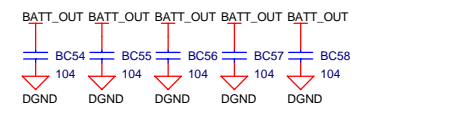
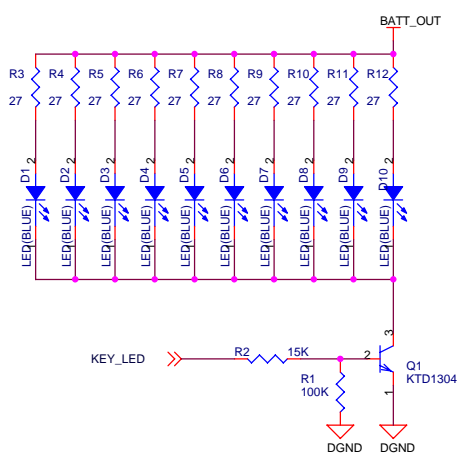
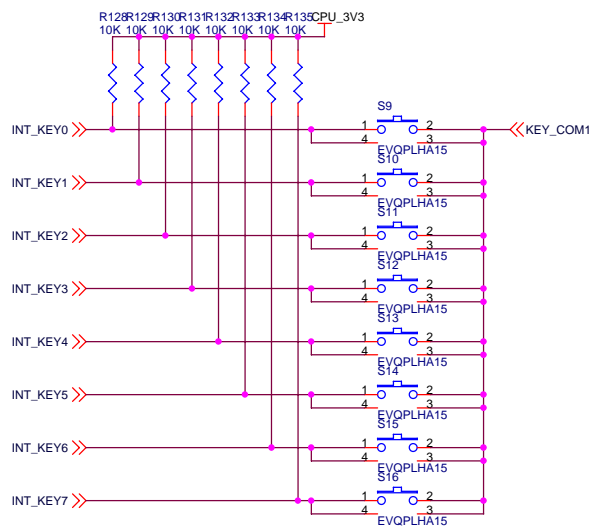
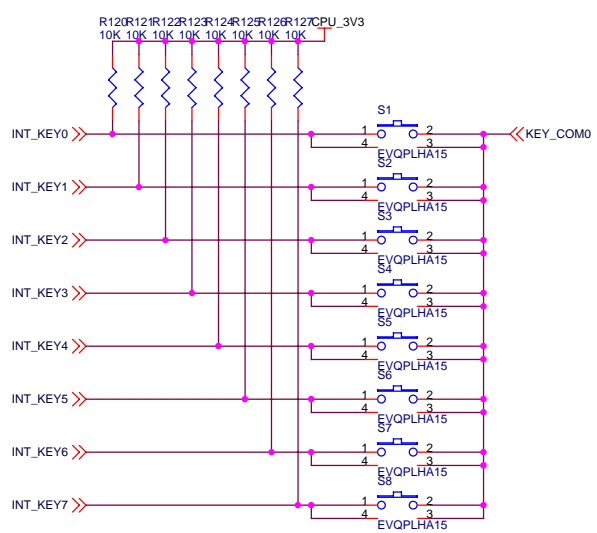
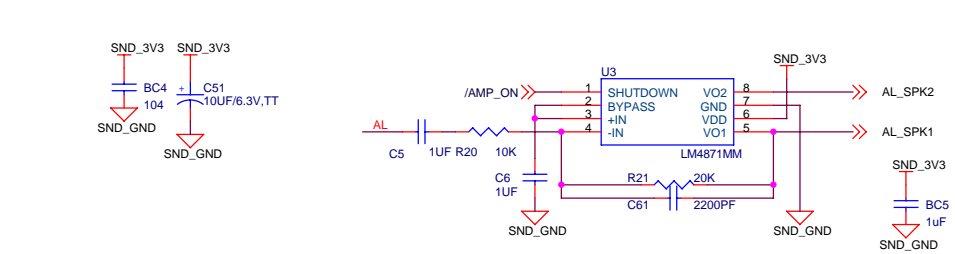
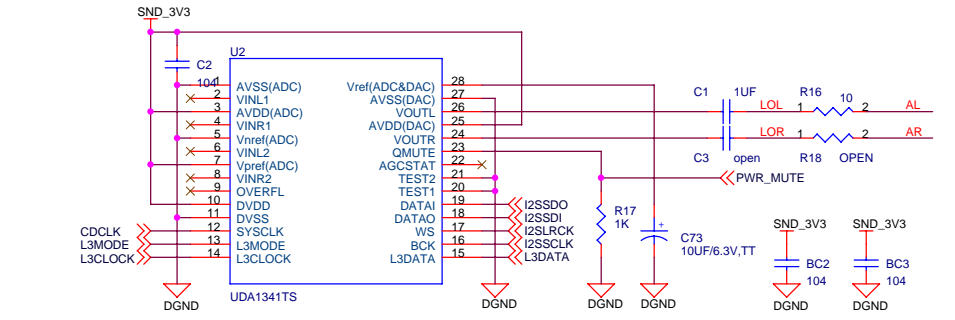
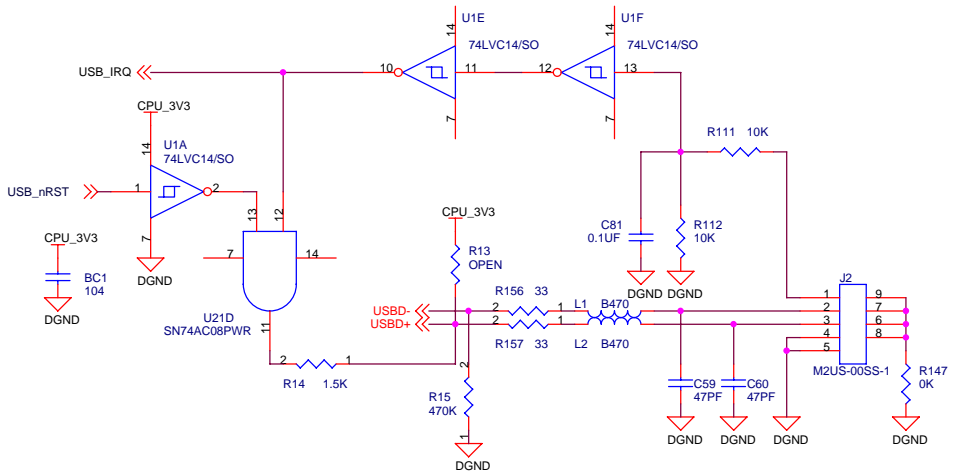
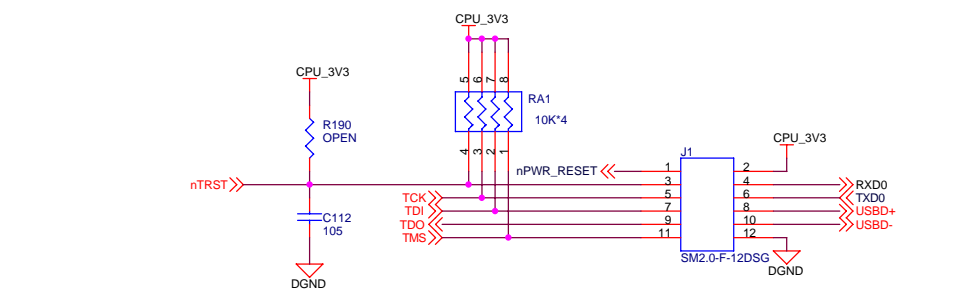
APPENDIX E
: SCHEMATIC DIAGRAM

Reivision	Date	Description
Ver0.1	2005.05.19	First release version from MX-3000-N2 : New LCD(topolly) , LCD Ref. Power (MAX 1779), Stereo
Ver0.2	2005.06.11	Backlight LED Serial, Touch(XR,XL) Change
Ver0.3	2005.07.19	UDIA & Toppoly LCD 겸용 사용 회로 변경
		5page : U9B LCD_SCL, LCD_SDA, LCD_CS insert LCD_RST, VSYNC, HSYNC, TP120, TP121 insert
N4 : Ver0.1	2005.08.05	2Page : R192, C112 insert(JTAG RESET), LCD_TP1,2, RF_TP1~8 insert, GH13 insert
	2005.08.23	R191 추가 : Toppoly, UDIA LCD Backlight select , RF connect J8, C113 추가

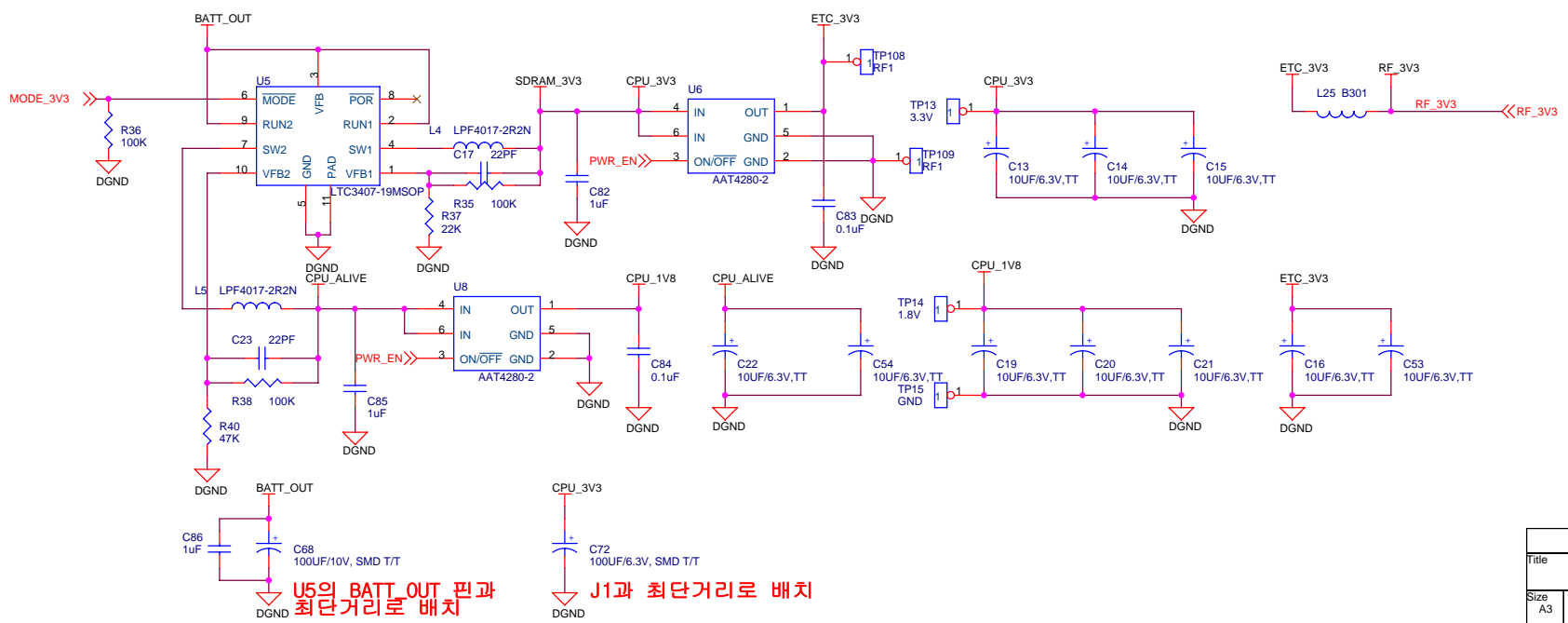
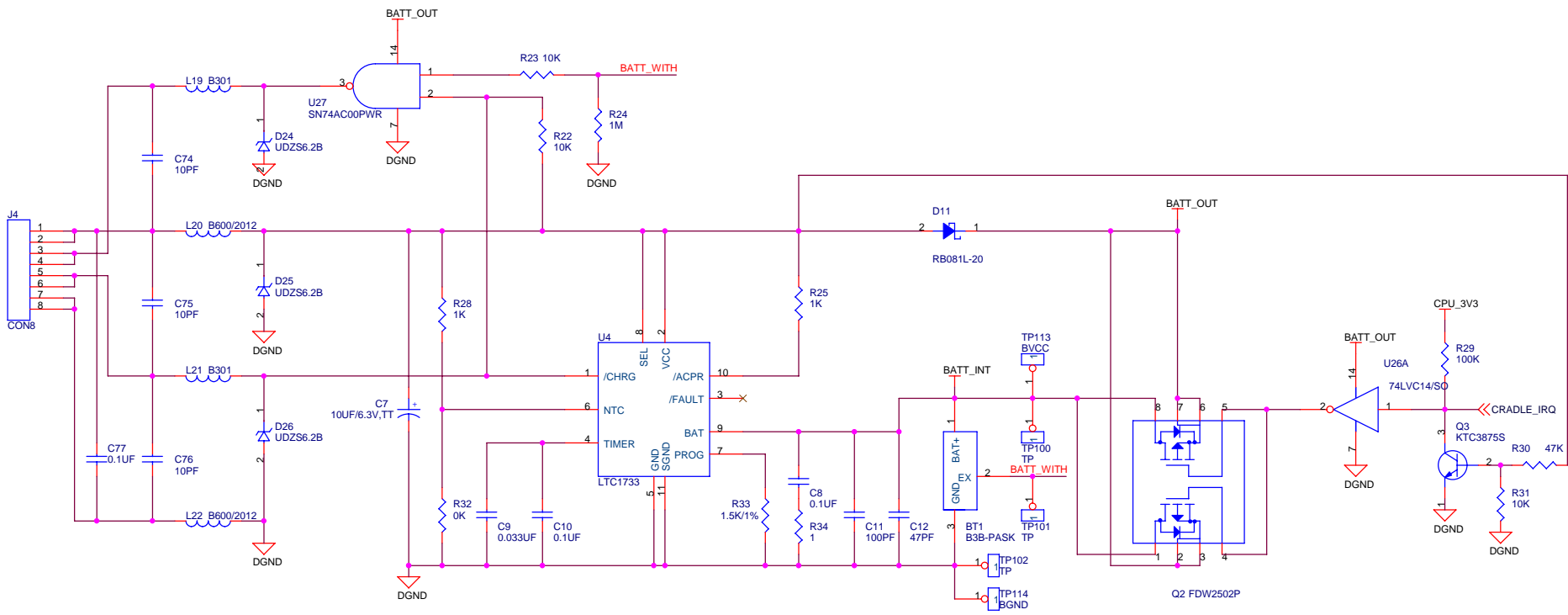
MX3000i R0.1 SCHEMATIC

CPU : S3C2410X01
ROM : NAND FLASH(64Mbyte,8bit)
RAM : SDRAM, SDR (64Mbyte,32bit)
Audio : UDA1341TS, Audio Amp(Stereo)



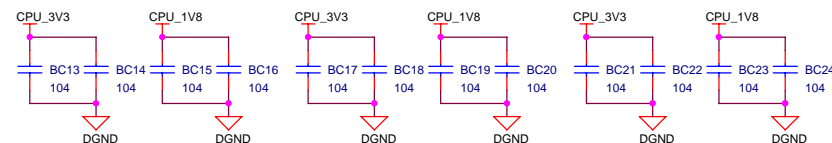
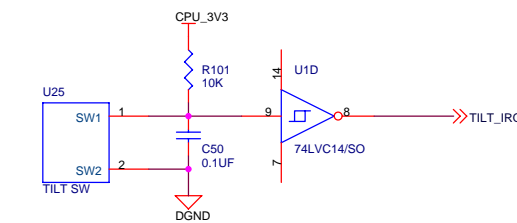
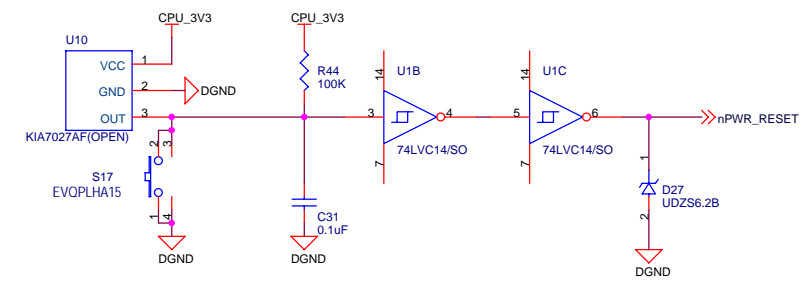
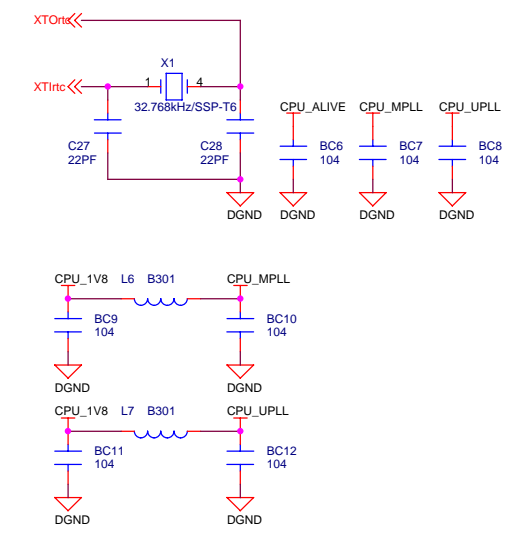
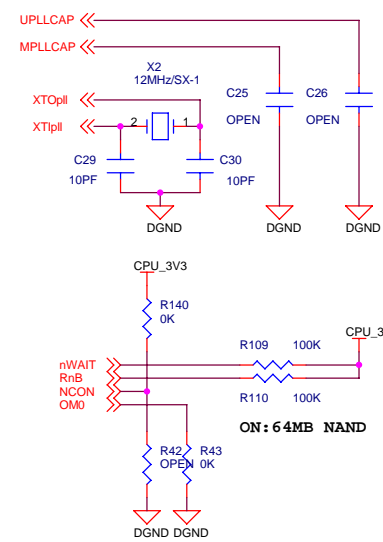
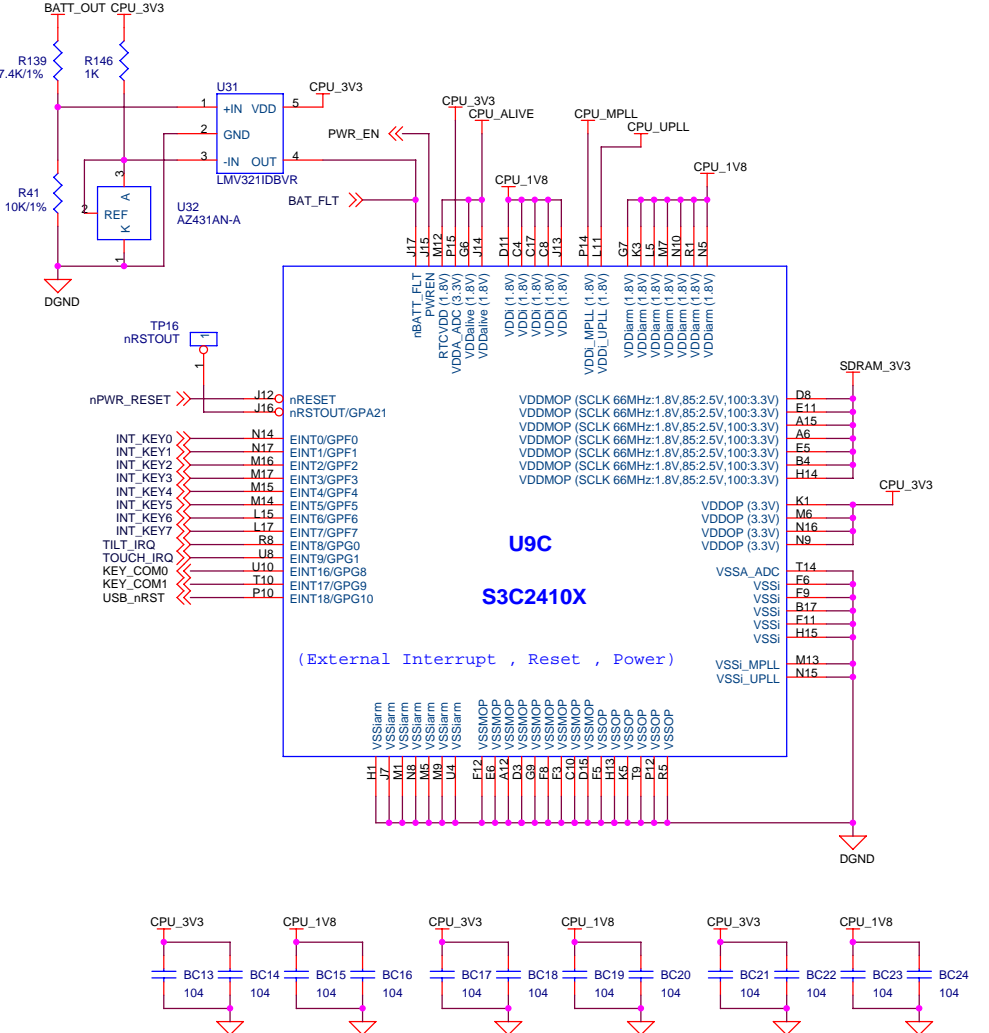


Title		
MX-3000i		
Size	Document Number	Rev
A3	CONNECTOR	0.1
Date:	Monday, February 12, 2007	Sheet 2 of 9

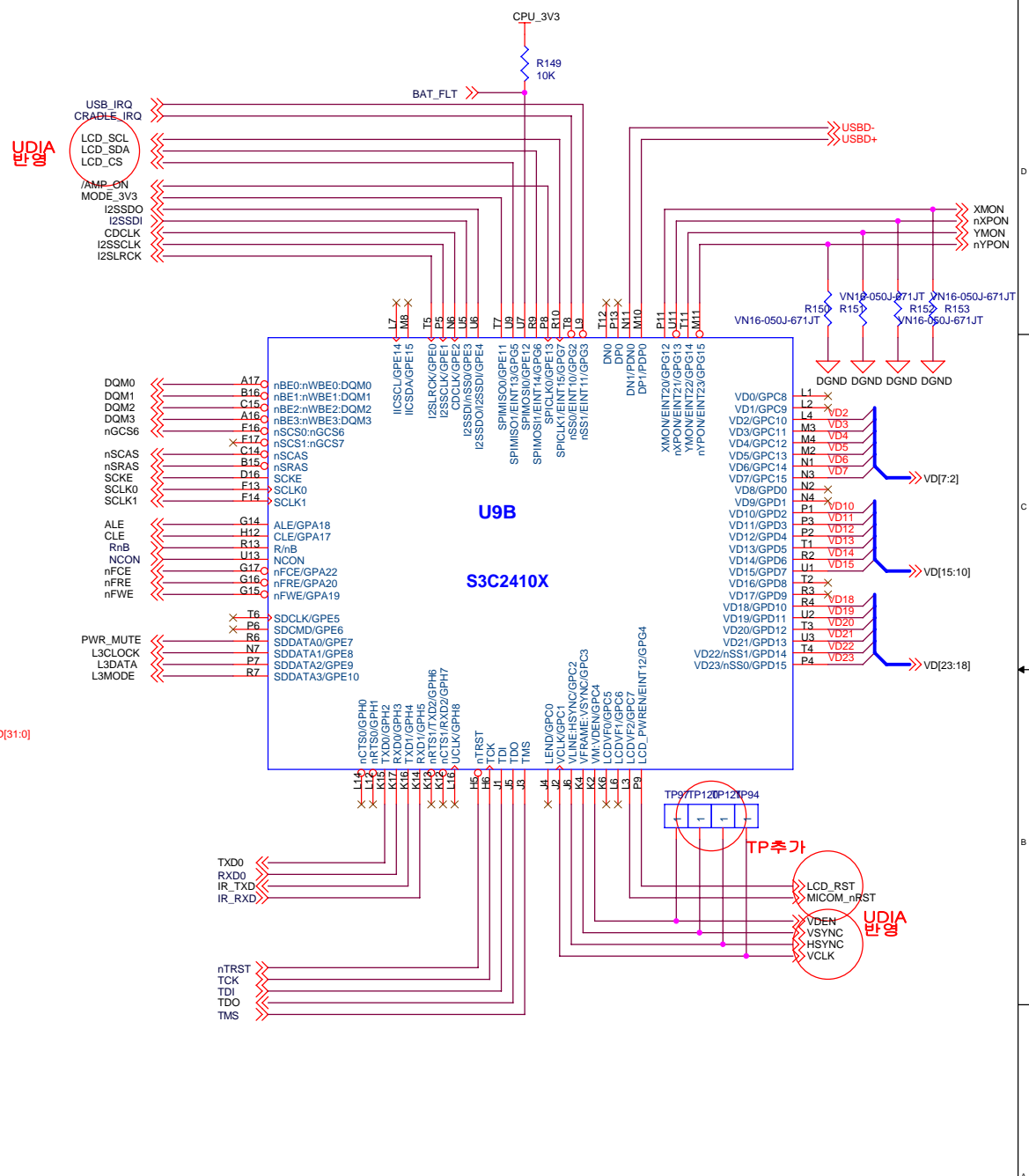
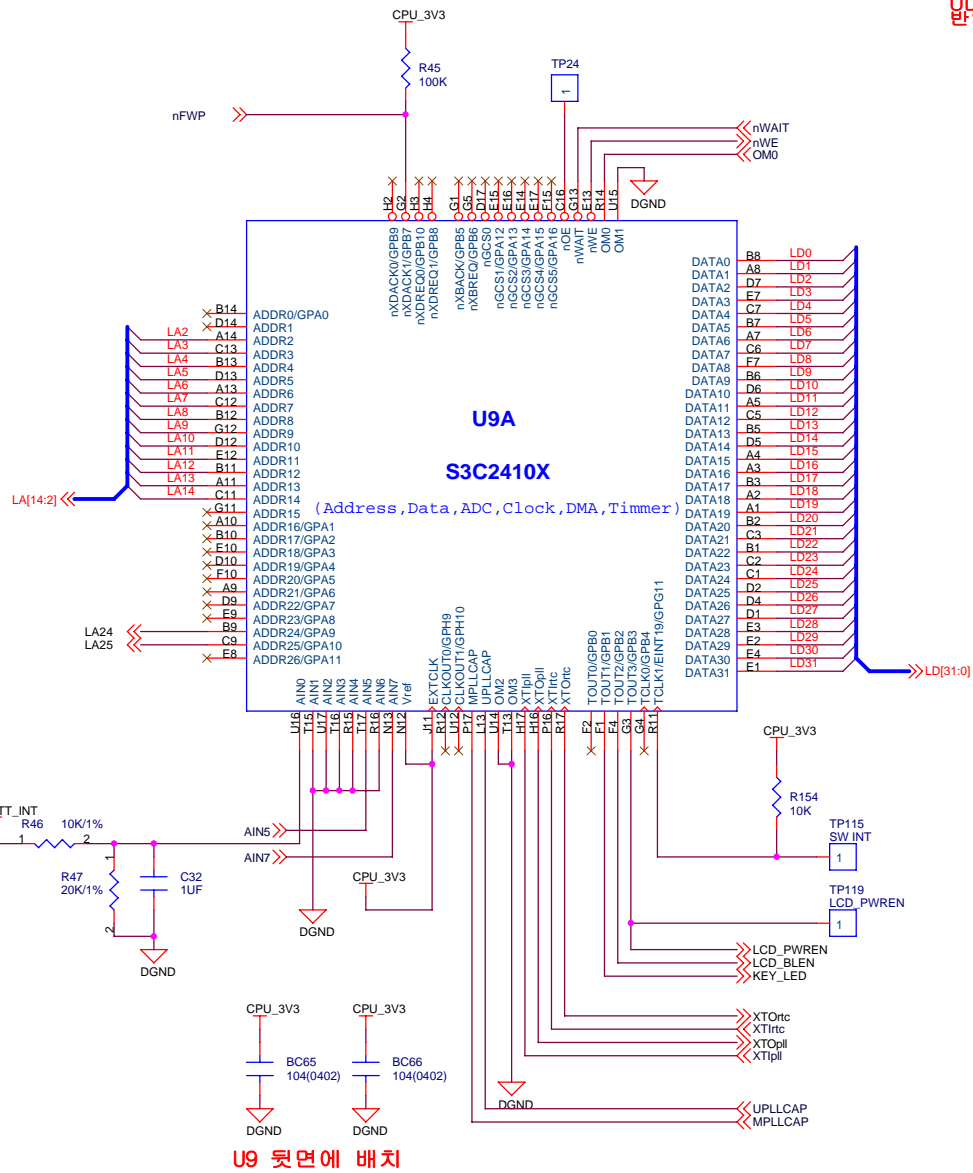


U5의 BATT_OUT 핀과
 J1과 최단거리로 배치

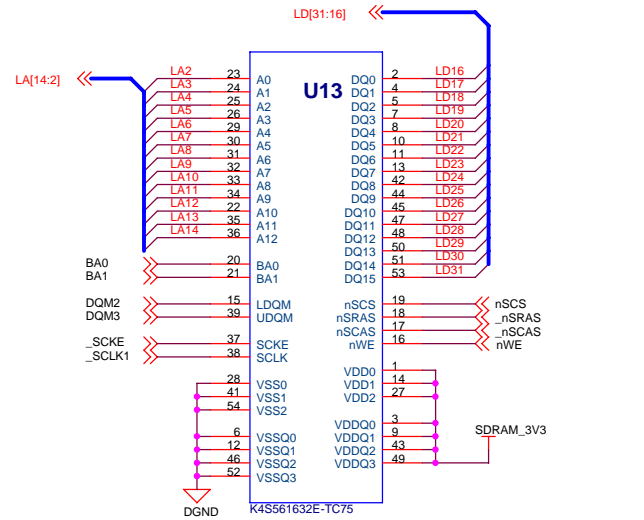
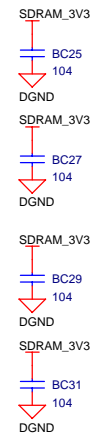
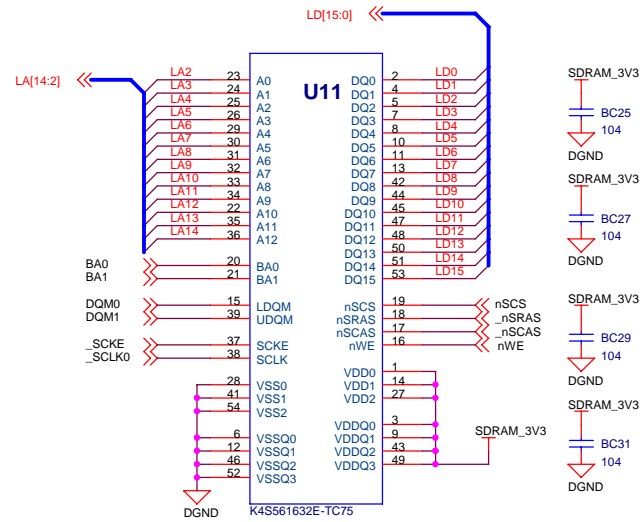
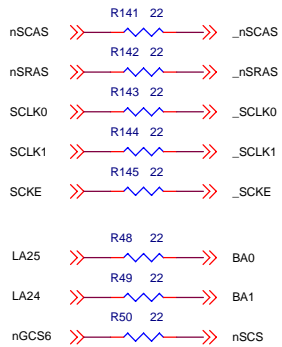
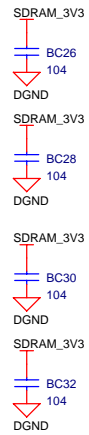
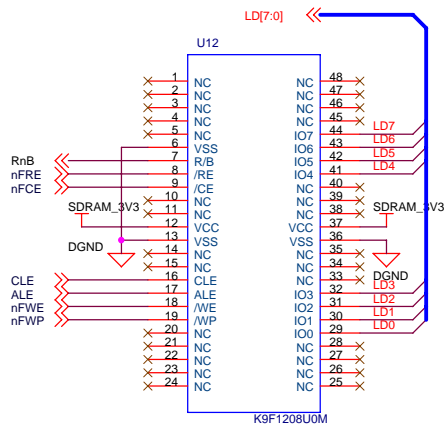
Title		
MX-3000i		
Size	Document Number	Rev
A3	POWER	0.1
Date:	Monday, February 12, 2007	Sheet 3 of 9



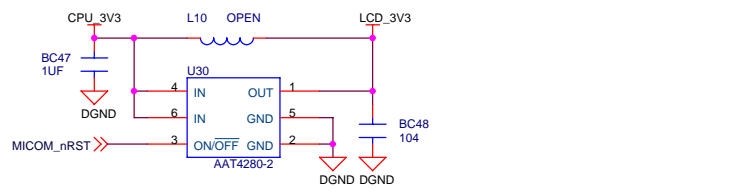
Title		
MX-3000i		
Size	Document Number	Rev
A3	ARM920T	0.1
Date:	Monday, February 12, 2007	Sheet 4 of 9



Title		
MX-3000i		
Size	Document Number	Rev
A3	ARM920T	0.1
Date:	Monday, February 12, 2007	Sheet 5 of 9

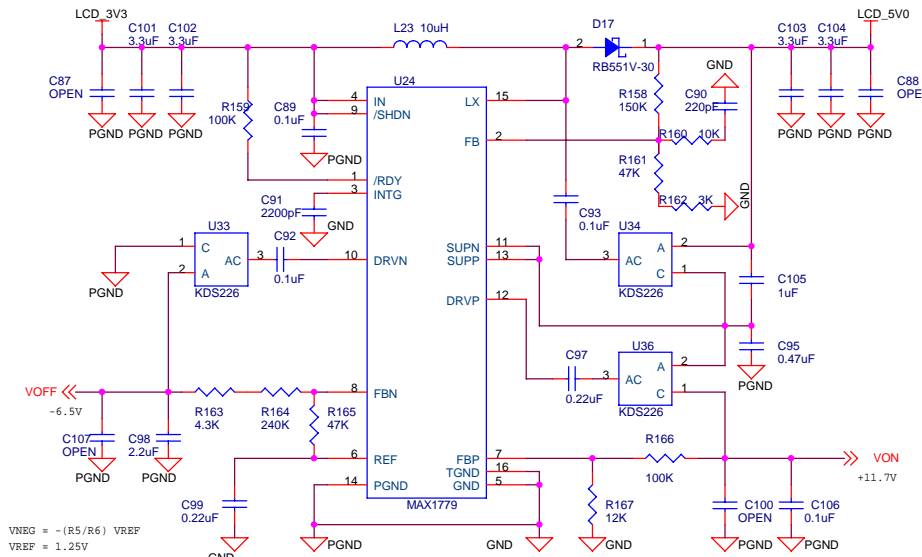


Title		
MX-3000i		
Size	Document Number	Rev
A3	MEMORY	0.1
Date:	Monday, February 12, 2007	Sheet 6 of 9



$$V_{OUT} = [1 + (R1 / R2)] \times V_{REF}$$

$$V_{REF} = 1.25V$$

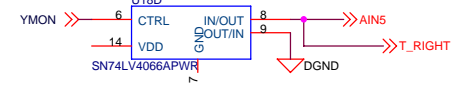
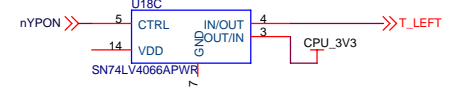
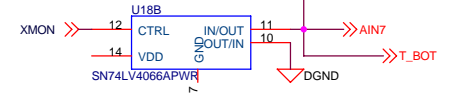
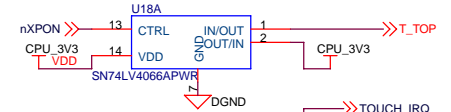
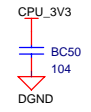
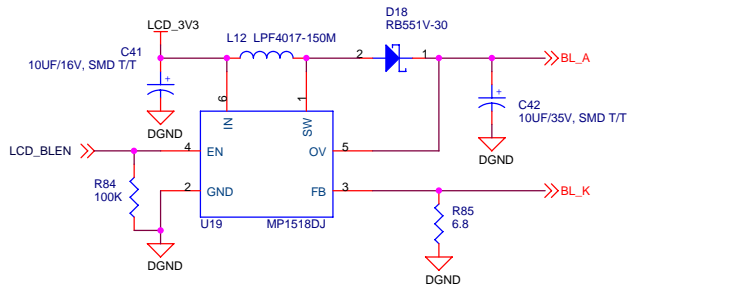


$$V_{NEG} = -(R5/R6) \times V_{REF}$$

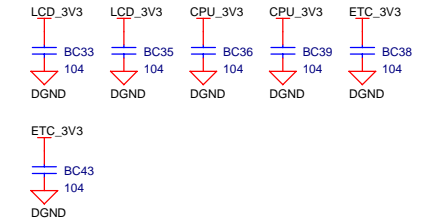
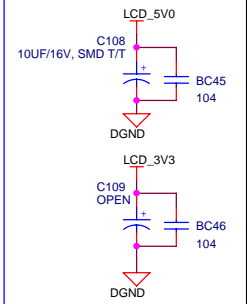
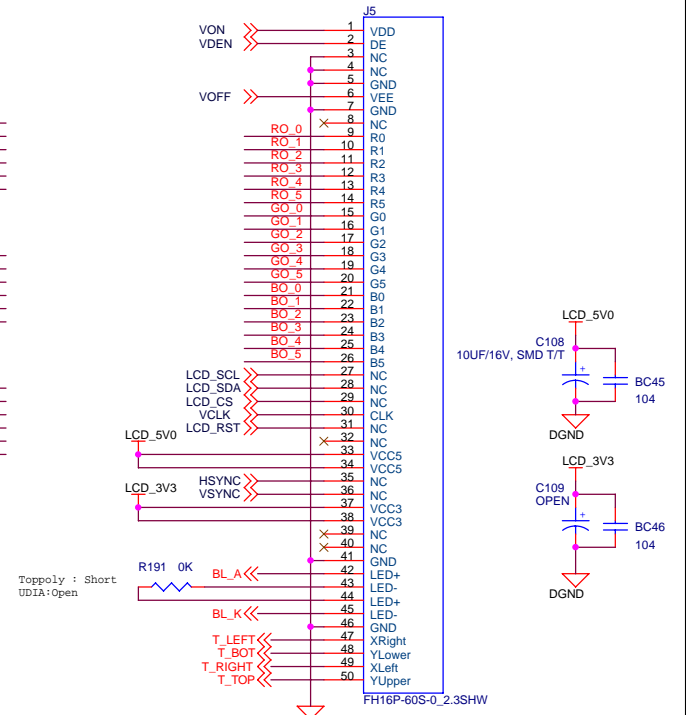
$$V_{REF} = 1.25V$$

$$V_{POS} = (1 + R3/R4) \times V_{REF}$$

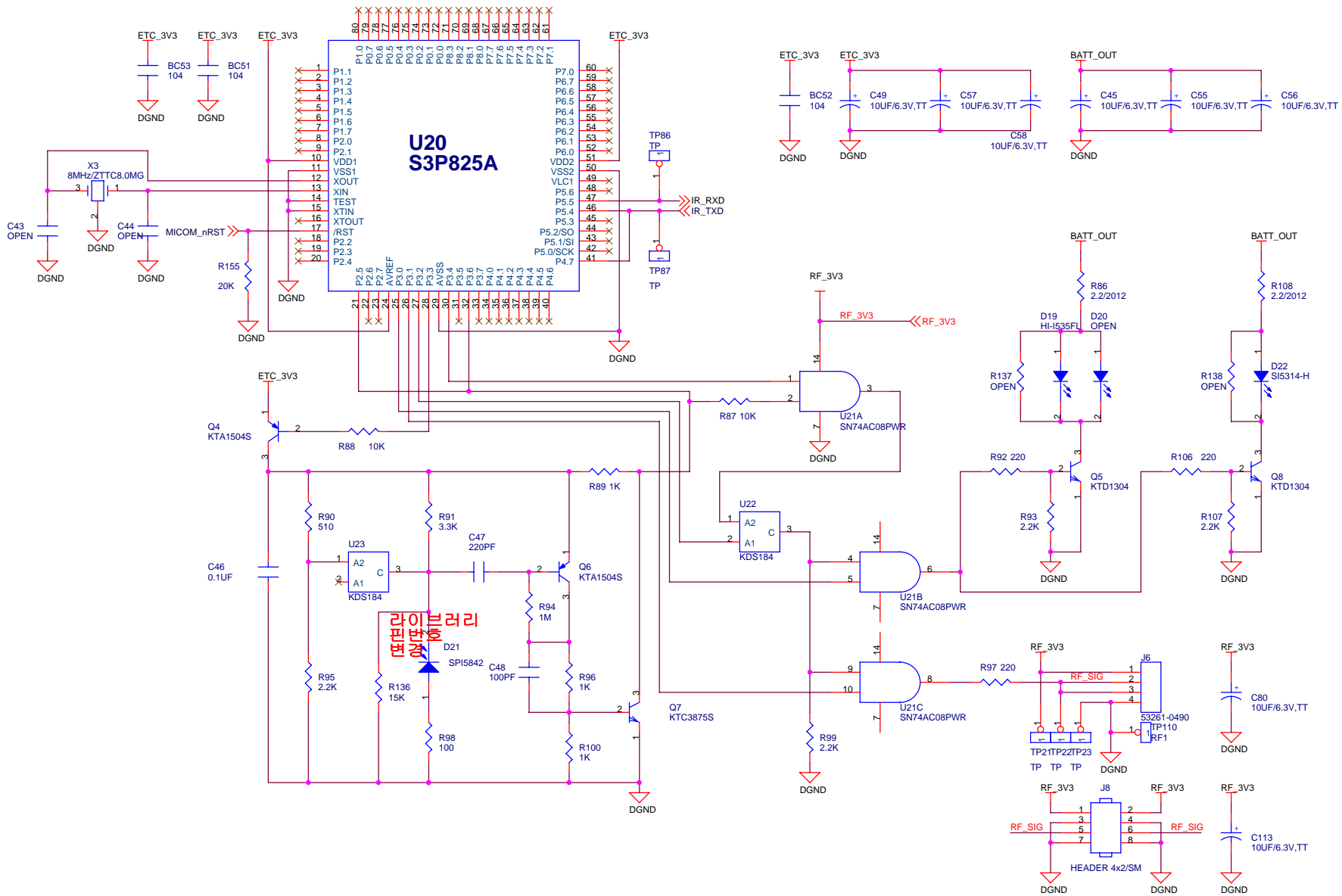
$$V_{REF} = 1.25V$$



Note 1. LCD용 GND는 모두 LCD_GND로 변경
 Note 2. TFT LCD는 TP & UDIA 경용으로 설계



Title			MX-3000i		
Size	Document Number		Rev		
A3	TFT_LCD		0.1		
Date:	Monday, February 12, 2007	Sheet	7	of	9



**U20
S3P825A**

**포터블
이더넷
이동기**

Title		
MX-3000i		
Size	Document Number	Rev
A3	MICOM	0.1
Date:	Monday, February 12, 2007	Sheet 8 of 9