

Displaying the Settings Screen

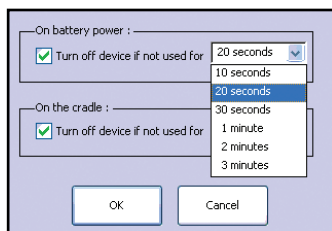
You can adjust the settings of the MX-3000 whenever you like by pressing and holding the MAIN button for five seconds. When you do, the screen will change to the SETTINGS screen. If you do not press any button on the SETTINGS screen within 30 seconds, the MX-3000 will time out and automatically return to normal operation.



The Settings Screen

Adjusting Backlighting

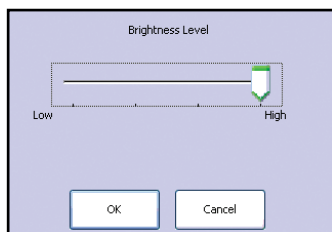
If you uncheck the check boxes, the MX-3000 will stay lit until the battery is exhausted. If you check the check boxes, you can select from the list of delays. The amount of delay you select will be the how long the MX-3000 stays lit. You can save battery life this way.



The Backlight Screen

Adjusting Brightness

Simply touch and drag the brightness slider to the desired level. Increased brightness does affect battery life.

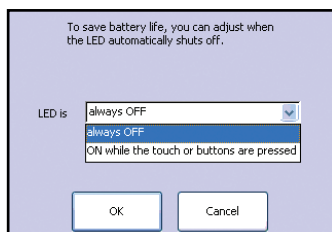


The Brightness Screen

Button Light Settings

You can opt to conserve battery life, by disabling the LED lighting behind the buttons.

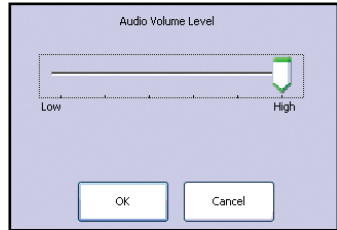
This is done by pulling down the list box and selecting "always off" from the list.



The Button Light Screen

Sound

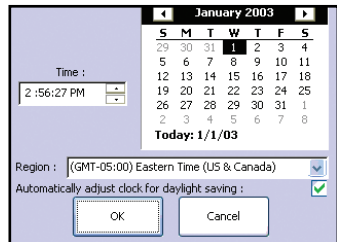
Your MX-3000 may have been programmed to make sounds. This is optional, and some professional installers may prefer to keep it silent. However, you can adjust the volume to any level you like by touching and dragging the volume control here.



The Sound Screen

Setting Time and Date

Your MX-3000 may have been programmed to display the time or date on a touch screen button. If so, you can correct the time displayed by changing the settings on this screen.

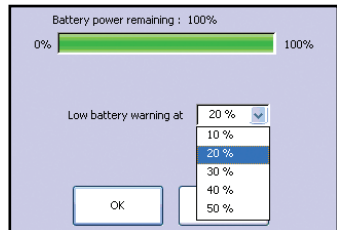


The Time and Date Screen

Power Settings

You can display the remaining charge by selecting Power Settings.

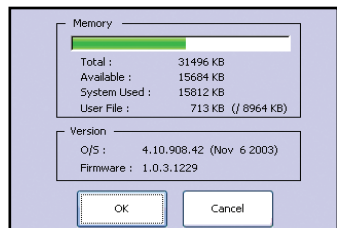
You can also adjust when the low battery warning screen will appear.



The Power Screen

System

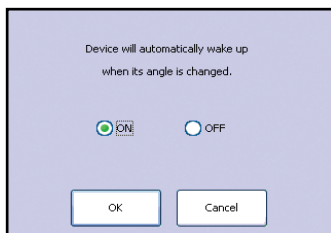
The System screen displays data about your MX-3000's operating system, memory etc.



The System Screen

Pickup Settings

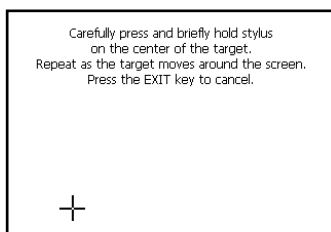
You can set your MX-3000 to only turn on when touched, or every time you move it.



The Pickup Screen

Calibration

If you like, you can calibrate where you tap by running the calibration. You will need a pen top or PDA stylus to do this. Do not attempt to calibrate using your fingers.



The Calibration Screen

Factory Default

WARNING! Only use this button when instructed to by Technical Support. It resets the memory of the MX-3000 to the factory condition. All your programming will be lost!



The Default Screen

Exit

When you have finished adjusting Settings, simply tap the EXIT button to return to normal operation.



The Exit Button

Maintaining Your MX-3000

Be careful not to scratch the touch screen, only use your finger to tap the LCD touch screen or use a plastic pen top or PDA stylus. Never use a real pen, pencil or any other sharp object on the screen. Keep it away from extreme cold or heat. The MX-3000 is not waterproof. Do not use it in any location that is damp or wet.

If you spill water on it, take out the battery pack and let the MX-3000 dry for 48 hours before you try powering it up again. If you spill coffee or another beverage on it, clean it with distilled water. Make sure no water gets inside the MX-3000. The touch screen contains a glass element. Don't drop the MX-3000 or impact it against anything.

Use a soft, damp cloth to clean the screen. If the screen still shows finger prints, clean it with watered down window-cleaner. Do not use anything abrasive and don't use too much water, some might leak into the interior.

Warranty

The MX-3000 is covered against any manufacturing defects or faults in workmanship for a period of one year from the date of purchase when purchased from an authorized Home Theater Master dealer. Units purchased from online auction sites or other unauthorized resellers have no warranty. This warranty does not cover the following items:

- ◆ Damage from misuse, neglect, or acts of nature.
- ◆ Products that have been modified or incorporated into other products.
- ◆ Products purchased more than 12 months ago.
- ◆ Units purchased from unauthorized dealers or companies.

Specifications

Microprocessor: 206MHz RISC

Memory - 16 Megabytes of RAM (for User Configuration)

Devices - Supports up to 255 Devices

Pages- Supports up to 255 Pages on each Device

Learning Capability - Standard frequencies (15kHz to 100kHz)

Macro Capability - Up to 255 steps each, however nesting is allowed

IR Range (Line of Sight via Infrared): 30-50 feet, depending on the environment

RF Range (radio frequency): 50 to 100 feet, depending upon the environment

RF Frequency: 418MHz

Weight: 10.4 oz. (with batteries)

Size: 7.17" x 4.76" x 1.18"

Batteries: Lithium Ion battery pack included

Information To The User

This equipment has been tested and found to comply with the limits for a Class B digital device, pursuant to part 15 of the FCC Rules.

These limits are designed to provide reasonable protection against harmful interference in a residential installation.

This equipment generates, uses and can radiate radio frequency energy and, if not installed and used in accordance with the instructions, may cause harmful interference to radio communications.

However, there is no guarantee that interference will not occur in a particular installation. If this equipment does cause harmful interference to radio or television reception, which can be determined by turning the equipment off and on, the user is encouraged to try to correct the interference by one more of the following measures:

- Reorient or relocate the receiving antenna.
- Increase the separation between the equipment and receiver.
- Connect the equipment into an outlet on a circuit different from that to which the receiver is connected.
- Consult the dealer or an experienced radio/TV technician for help.

Warning

Changes or modifications not expressly approved by the manufacturer could void the user's authority to operate the equipment.

Note : The manufacturer is not responsible for any Radio or TV interference caused by unauthorized modifications to this equipment. Such modifications could void the user's authority to operate the equipment.



500 Mamaroneck Avenue, Harrison, NY 10528

Phone: (914) 835-4484 Fax: (914) 835-4532

www.universalremote.com