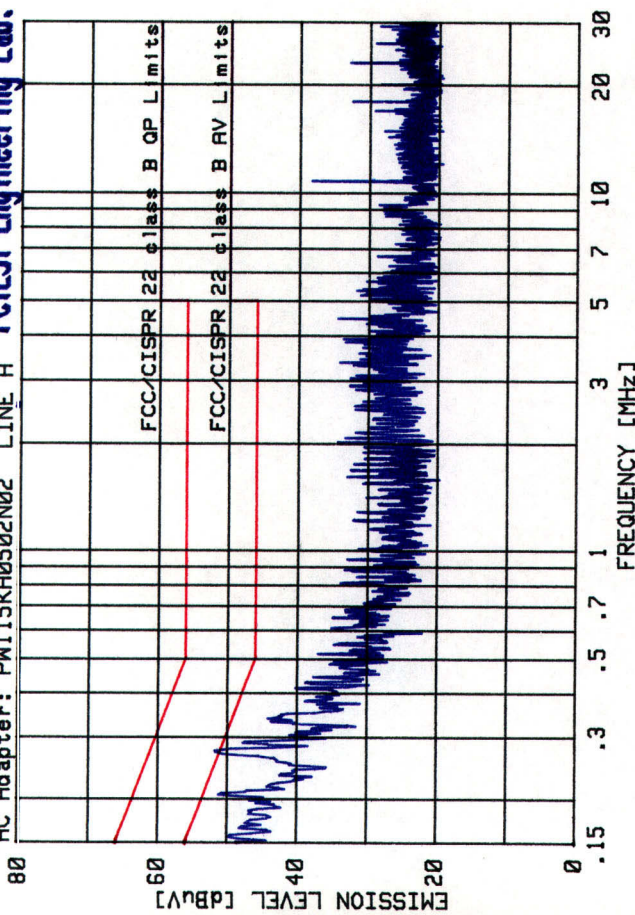


Model: MX-3000 (IR/RF Remote Ctrl)
 AC Adapter: PW115KA0502N02 LINE A

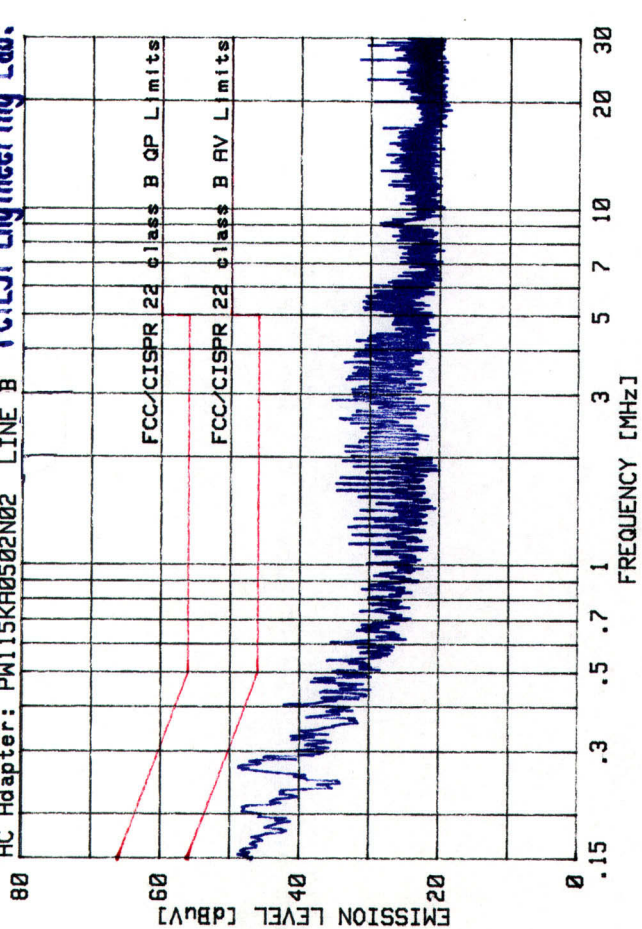
PCTEST Engineering Lab.



No.	Freq. [MHz]	Quasi-Pk [dBuV]	Limit [dBuV]	Margin [dB]	Average [dBuV]	Limit [dBuV]	Margin [dB]
1	.269	46.01	61.16	-15.15	34.98	51.18	-16.20
2	.200	46.93	63.59	-16.66	41.07	53.69	-12.62
3	.282	40.06	60.74	-20.68	25.82	50.85	-25.03
4	.335	37.98	59.33	-21.35	28.77	49.27	-20.50
5	.335	38.18	59.33	-21.15	29.16	49.33	-20.17
6	.151	47.59	65.95	-18.36	34.84	56.00	-21.16
7	.151	47.58	65.95	-18.37	34.24	55.73	-21.49
8	.168	45.34	65.07	-19.73	34.66	53.81	-19.15
9	.403	35.76	57.80	-22.04	25.84	47.78	-21.94
10	.408	31.13	57.69	-26.56	19.88	47.50	-27.62

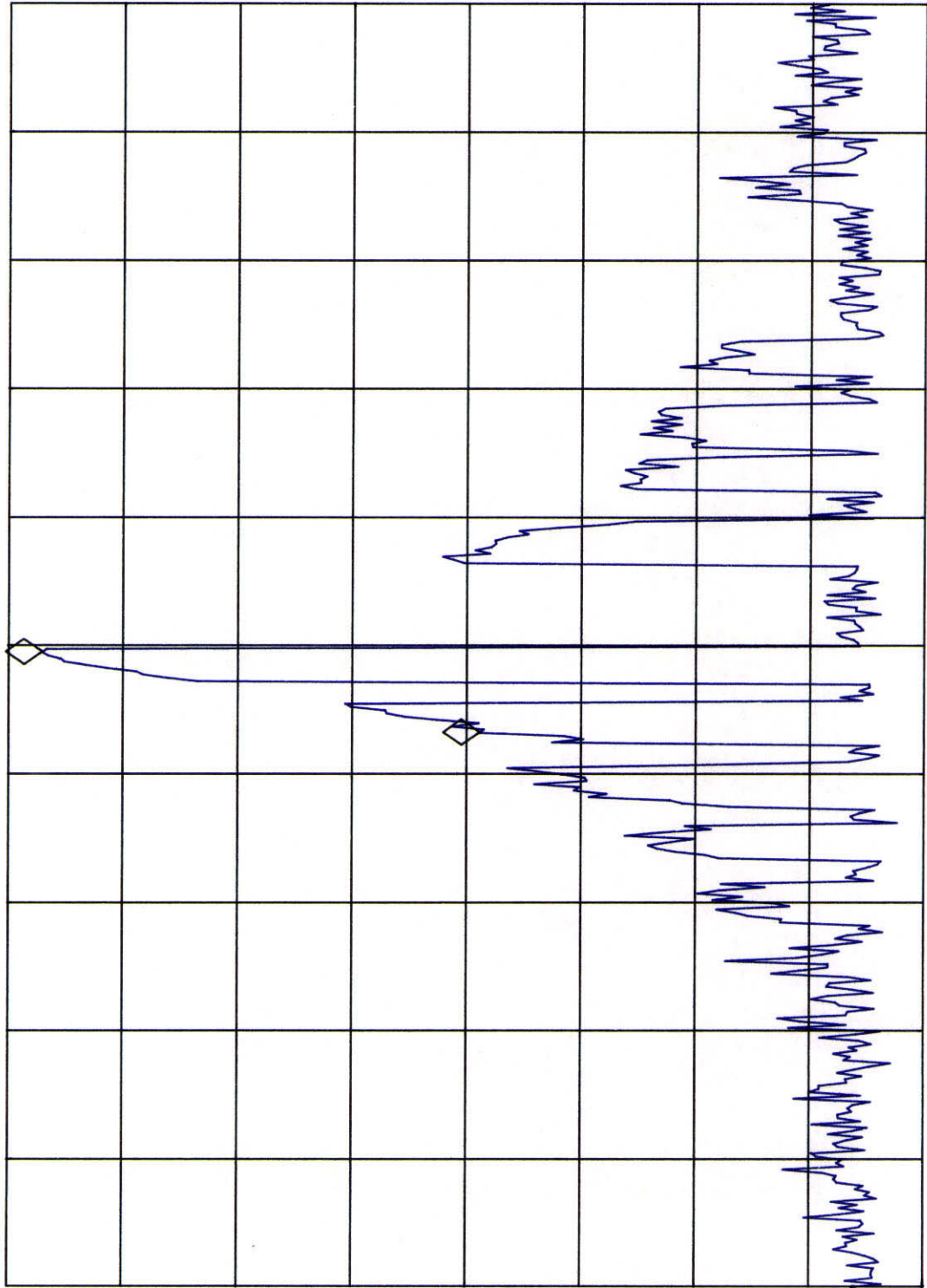
Model: MX-3000 (IR/RF Remote Ctrl)
 AC Adapter: PW115KA0502N02 LINE B

PCTEST Engineering Lab.



No.	Freq. [MHz]	Quasi-Pk [dBuV]	Limit [dBuV]	Margin [dB]	Average [dBuV]	Limit [dBuV]	Margin [dB]
1	.267	46.46	61.22	-14.76	38.36	51.17	-12.81
2	.267	46.18	61.22	-15.04	37.82	51.07	-13.25
3	.190	45.57	64.04	-18.47	44.46	53.64	-9.18
4	.270	37.66	61.13	-23.47	31.30	50.85	-19.55
5	.401	34.34	57.82	-23.48	28.53	47.80	-19.27
6	.151	50.92	65.95	-15.03	44.65	56.00	-11.35
7	.469	29.56	56.54	-26.98	28.65	46.53	-17.88
8	.339	37.97	59.22	-21.25	31.51	49.39	-17.88
9	.360	32.13	58.73	-26.60	24.72	48.30	-23.58
10	.164	48.98	65.24	-16.26	41.04	54.75	-13.71

Model: MX-3000 IR/RF Remote Control MKR Δ -313 kHz
REF -45.0 dBm ATTEN 10 dB

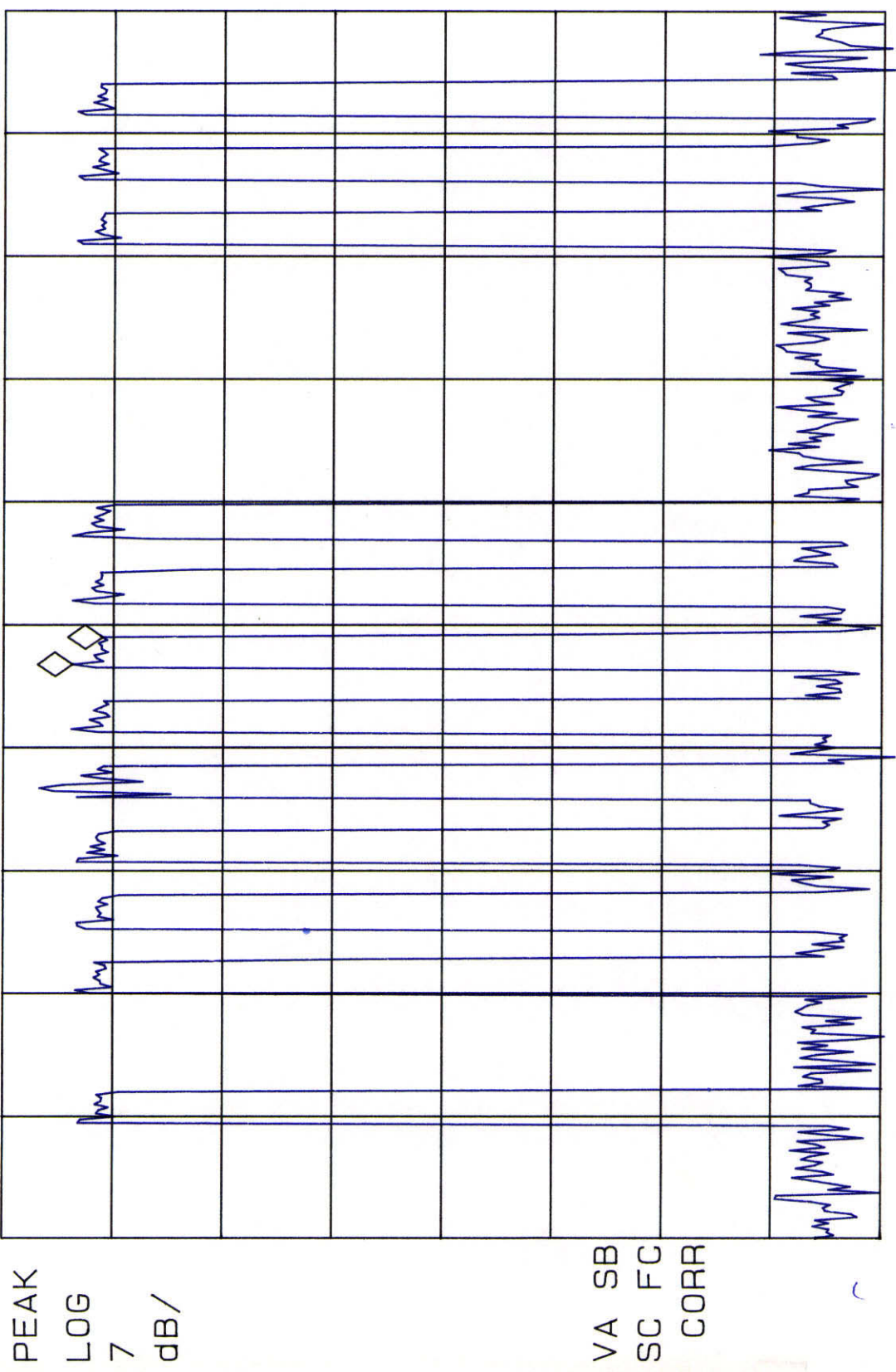


PEAK
LOG
5
dB/

VA SB
SC FC
CORR

CENTER 419.700 MHz
#RES BW 100 kHz
SPAN 5.000 MHz
#SWP 20 msec
#VBW 300 kHz

Model: MX-3000 IR/RF Remote Contr MKR Δ 450.000 μ sec
REF -32.7 dBm ATTEN 10 dB -1.91 dB



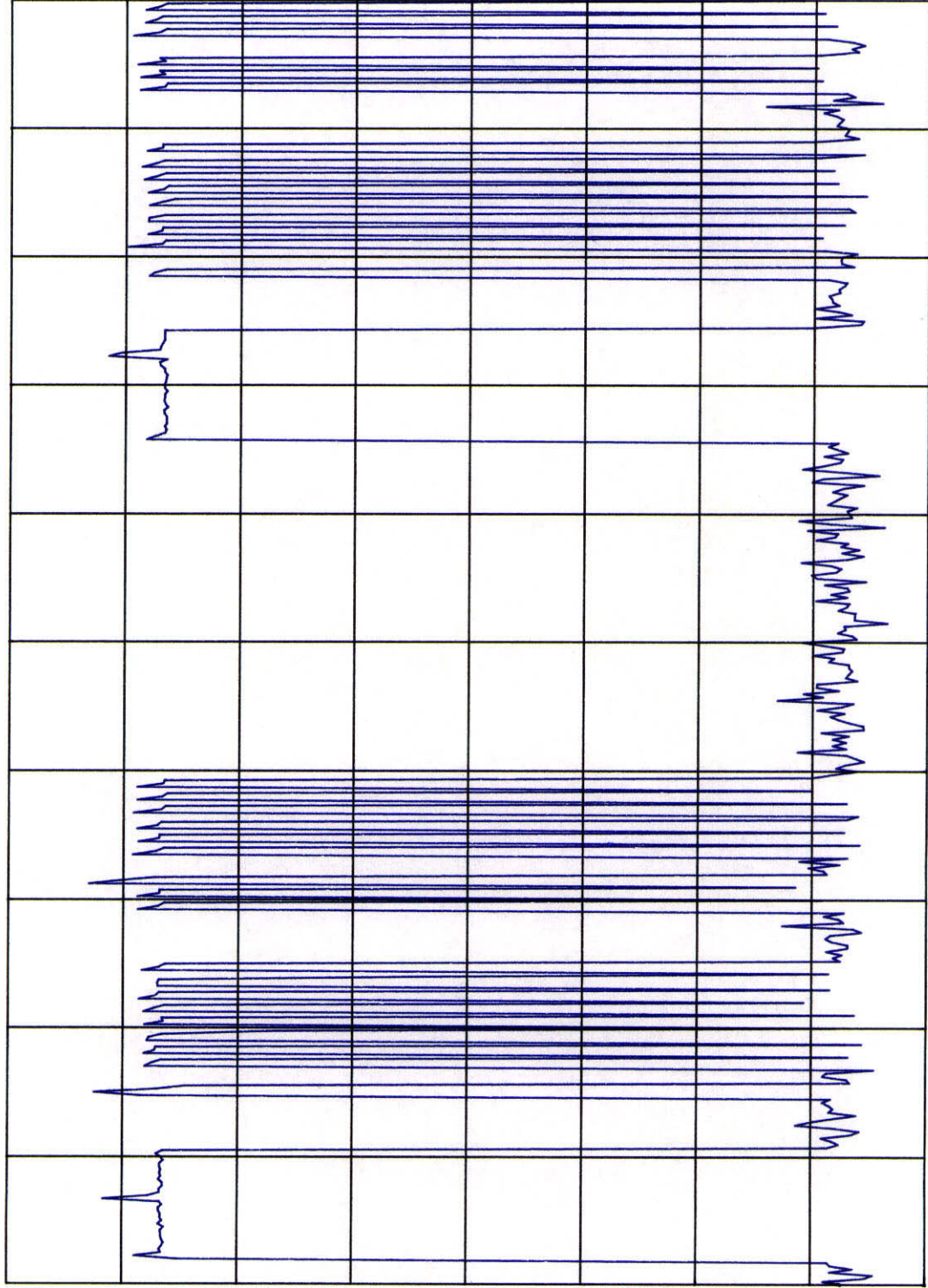
PEAK
LOG
7
dB/

VA SB
SC FC
CORR

CENTER 419.690 MHz
#RES BW 100 KHZ
#VBW 300 KHZ
SPAN 0 HZ
#SWP 20 msec

Model: MX-3000 IR/RF Remote Control
REF -32.7 dBm ATTEN 10 dB

PEAK
LOG
7
dB/



VA SB
SC FC
CORR

CENTER 419.690 MHz
#RES BW 100 KHZ

#VBW 300 KHZ

SPAN 0 HZ
#SWP 100 msec