



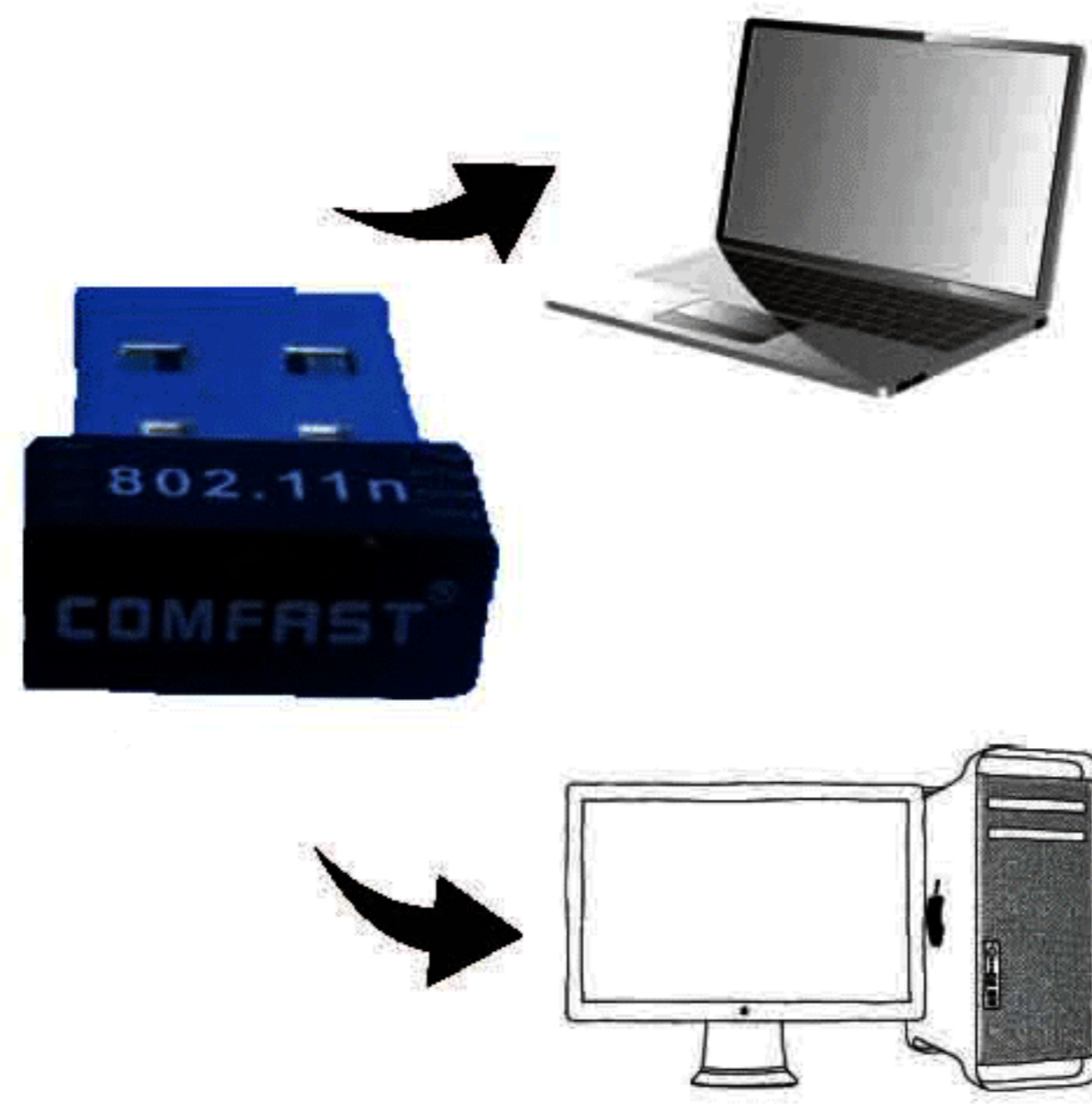
Quick installation guide

Wireless-N USB Adapter
Model:CF-WU710N

- Wireless network card
- Quick installation guide
- Warranty card
- CD ROM drive

The first Hardware installation

Without powering down the computer, only the card inserted into the corresponding slots in the correct direction. Map with usb adapter as an example.



For Windows7, Please insert the usb adapter directly and then follow the Step 2; the software installation.
For Windows XP/Vista, Please insert the usb adapter first. Click "Cancel" after the new hardware setup wizard pop-up, as shown below.

Windows XP



- Warning:
1. keep away from heat, ventilation.
 2. in the storage, transportation and operation environment, please pay attention to the waterproof.
 3. to prevent other harmful substance invasion, for example: acid, alkali.
 4. do not privately disassembly, failure, required by the professional technicians to repair.

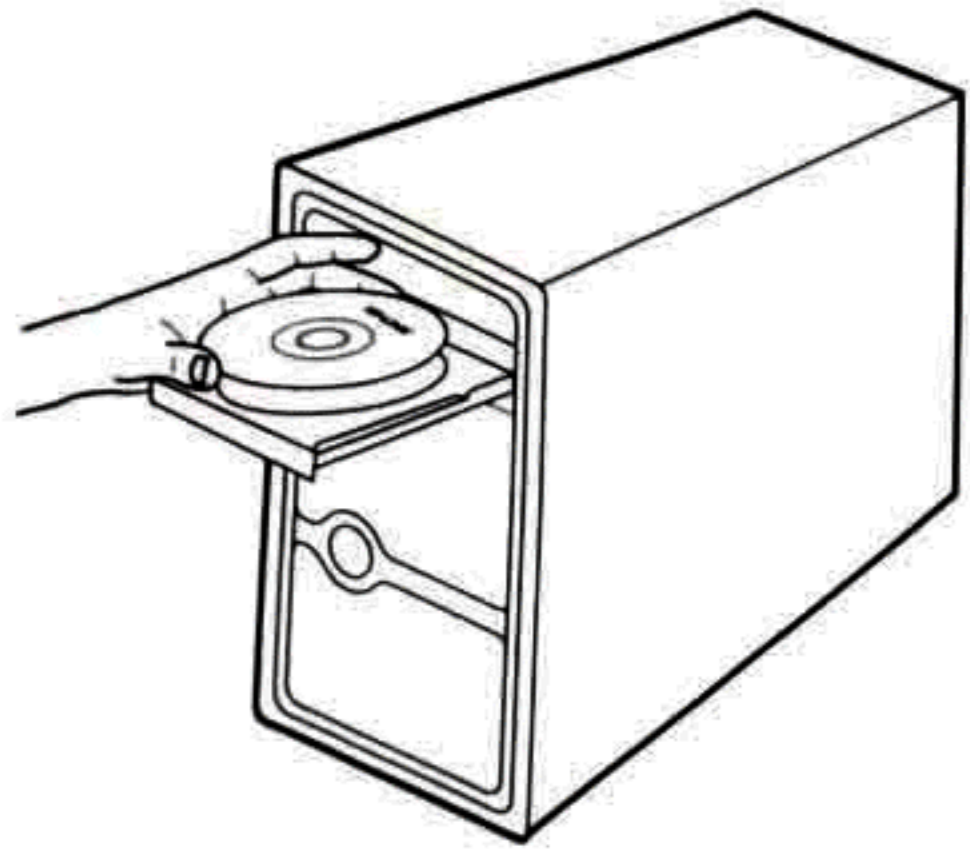
Windows Vista



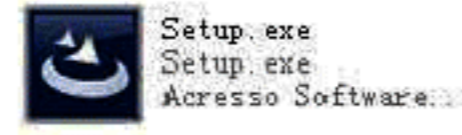
The second Software installation

Software installation process in WINDOWS 7 / VISTA / XP is basically the same, this in the WINDOWS Xp system as an example.

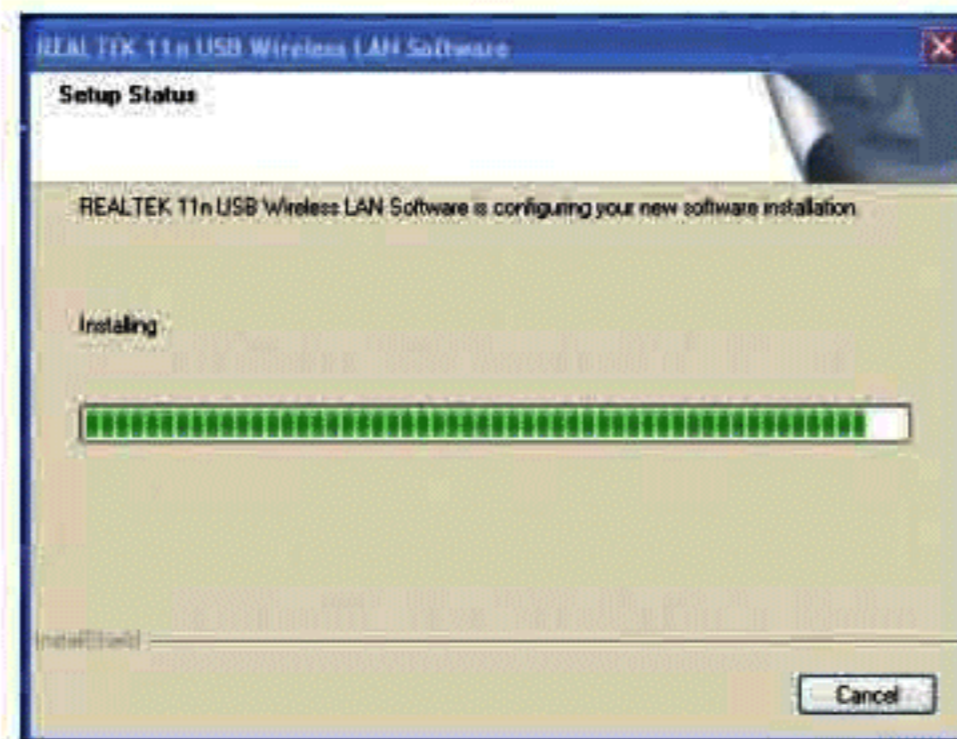
A. Put your disc into your CD-ROM drive.



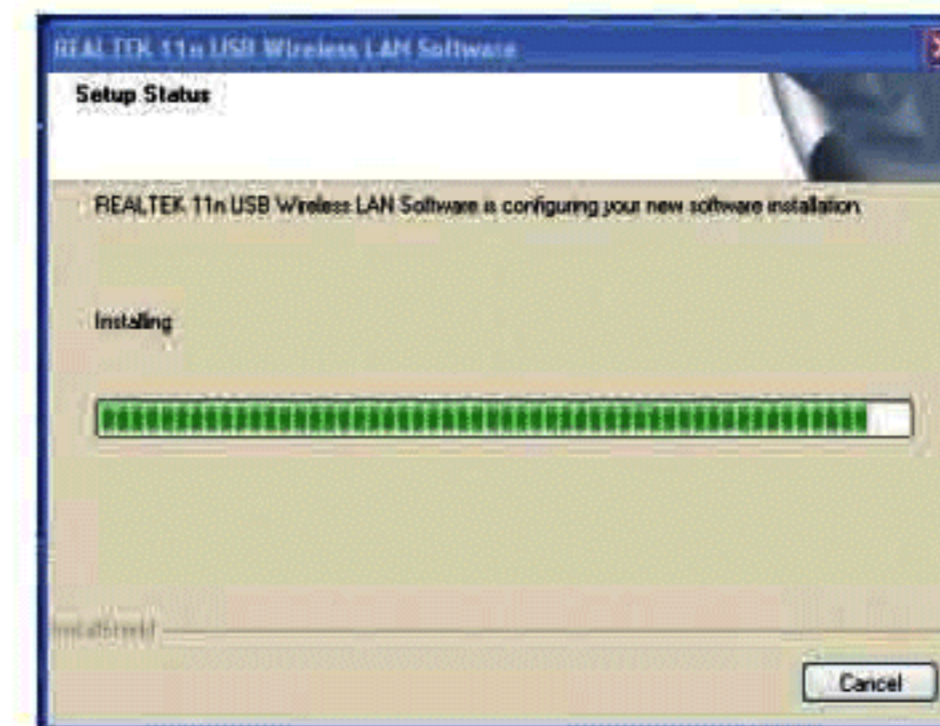
B. Double-click the icon [Setup.exe] from the following path to install.



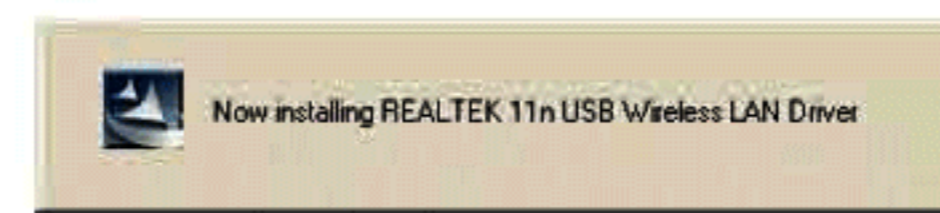
E. The installation process takes just 3 seconds



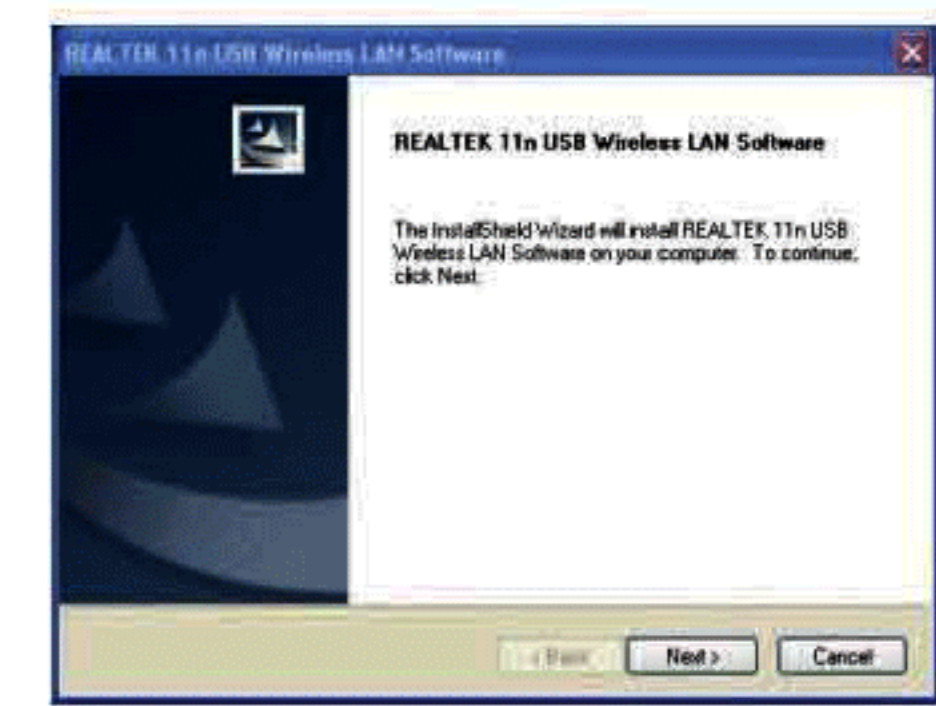
C. prepare installation process only takes a second



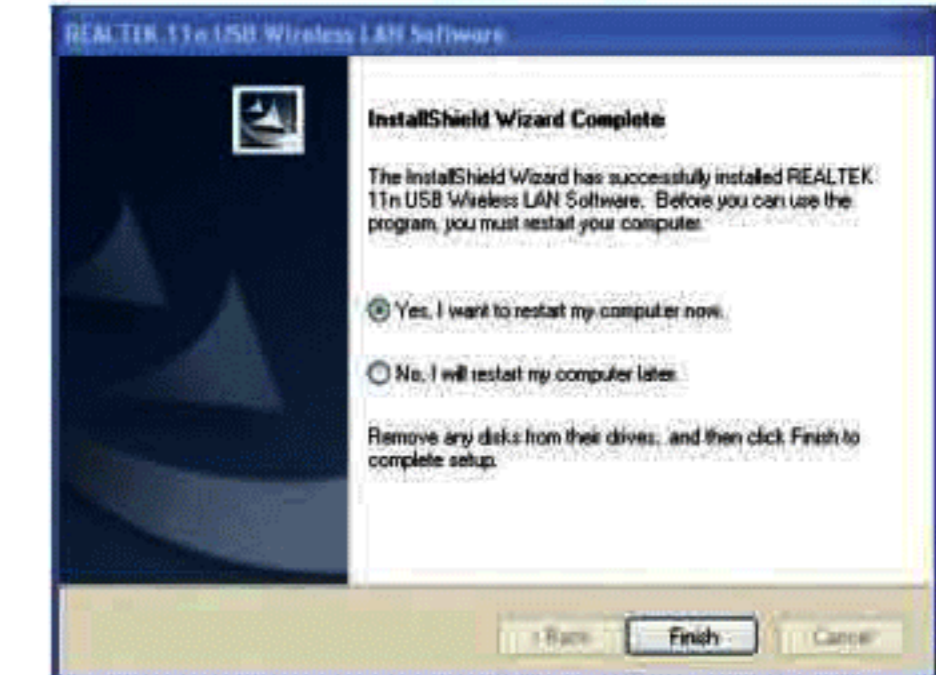
F. Please wait for a minute.



D. Click "next" to continue installation.



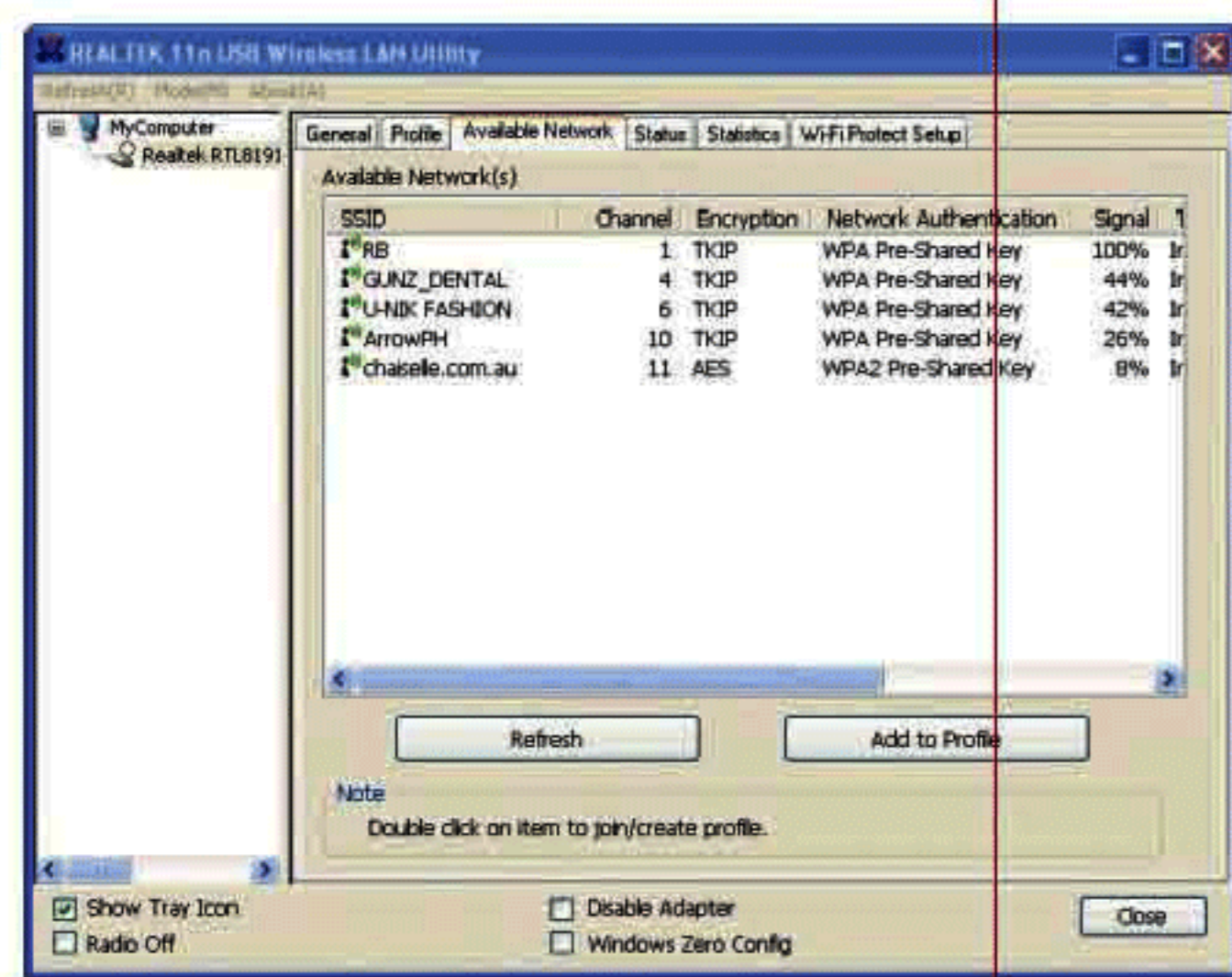
G. Click "finish"



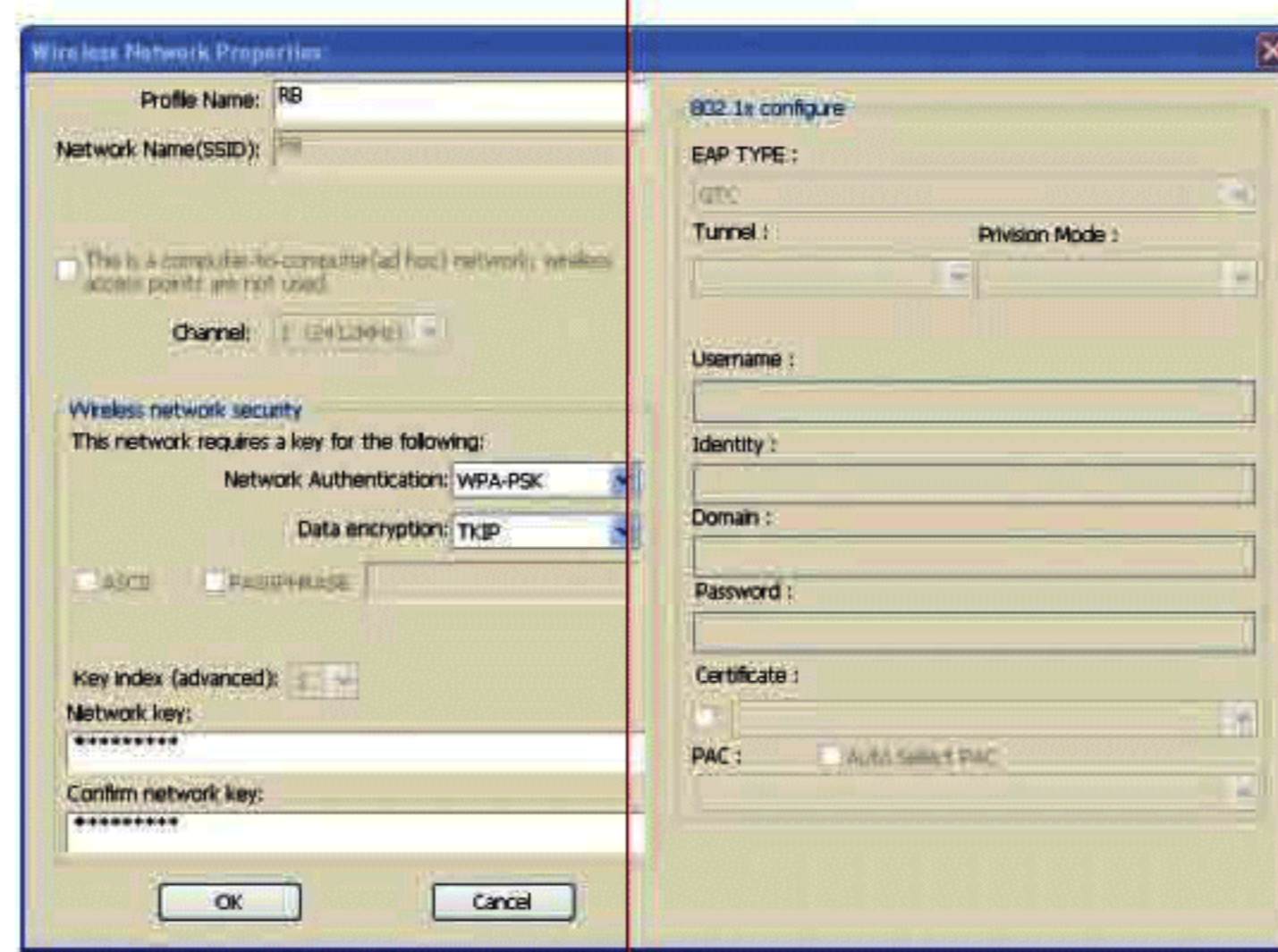
The three connected to the network

Software configuration management process in Windows 7 / Vista / XP under the same. If you have a WPS or QSS wireless router (or wireless AP), can be directly refer to appendix WPS quick safety connection, and the wireless network to establish a secure connection.

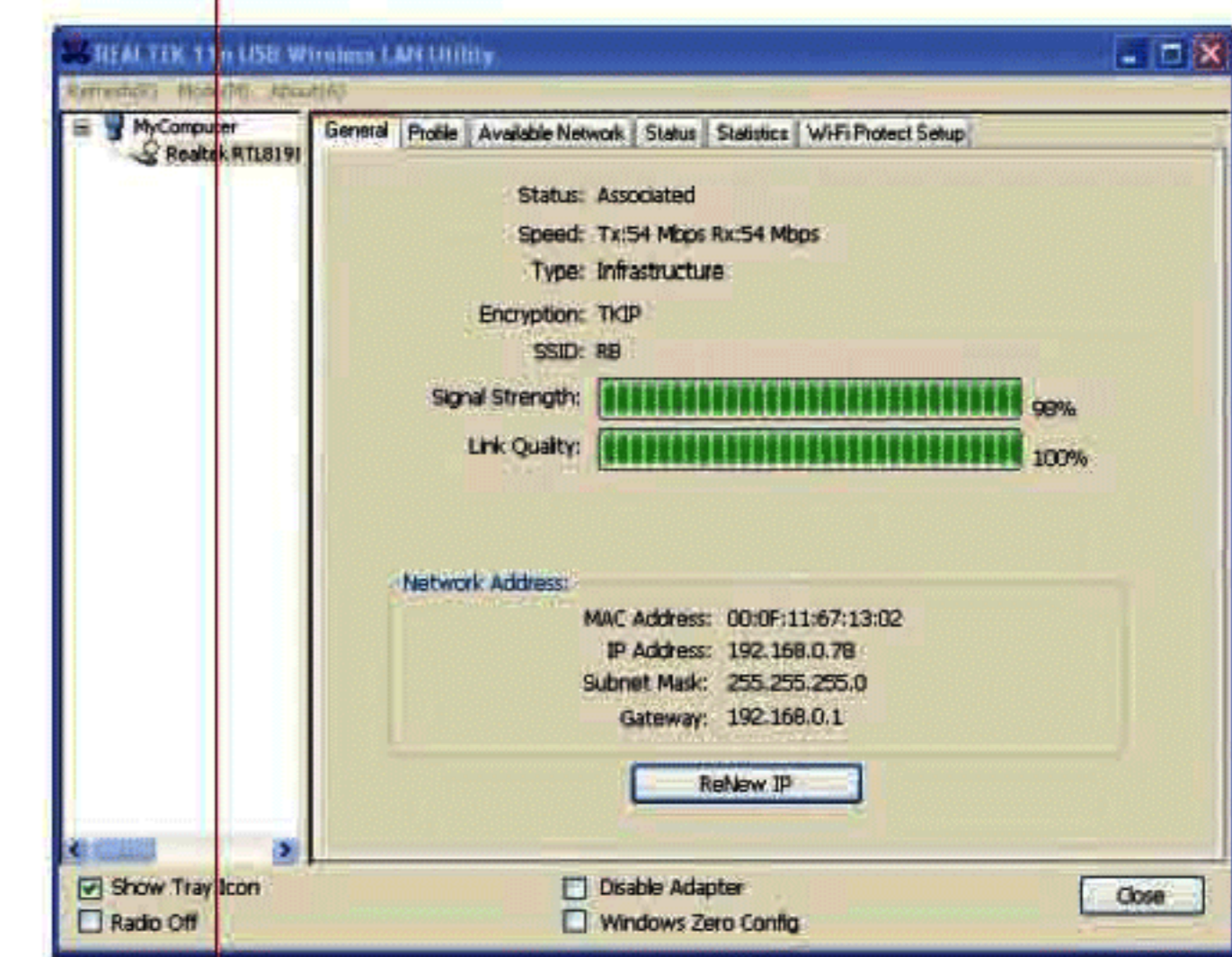
A. after the installation is complete, the client application will run automatically. Double click on the lower right corner of the computer icon, Choose your connection to the AP (for example: WLKJ-WIFIIN), then click on "connection".



B. If you want to connect to the network is not encrypted, so no need for any set Can be successfully connected to. If you want to connect to the network is encrypted, please input routing network key For the password, click "ok".



C. wireless networks such as below, Indicates a successful access the network.



The wireless network Card FAQ

Wireless internet access is often cut off a net?

1. router connection is bad? if there was a loose condition, make sure it is fixed.
2. the power adapter and the quality of voltage compliance requirements, can get a look at the adapter problem is it right?
3. wireless signal transmission attenuation is too large or unstable, check card and routing between whether obstacles too much.
4. electromagnetic interference, whether near other electromagnetic wave interference of wireless network card.
5. the wireless network card driver can not work normally, recommend the use of the purchase of wireless network card comes with a CD-ROM drive.

Cable using normal, wireless network can not?

1. wireless connection to the IP address, DNS address is automatically acquired, if not, then set the automatic acquisition.
2. check the wireless network card and the configuration of the router is consistent, if different, please change the arbitrary end.
3. check the wireless connection is to obtain IP address, if no access, please link.
4. the router firewall filtering rules whether the wireless network card. if you set the filter rules, proposed to delete rules.

1. the network signal intensity is weak, can add one antenna signal enhancement.
2. the software is automatically download updates caused by network congestion. Waiting to update end which returned to normal, and then close the operating system update
3. a computer Trojan horse virus. Suggested use hobbyhorse kill tool overall anti-virus.
4. the user bandwidth itself restrict Internet access speed, such as 1M broadband download speeds in 100KB / s left and right sides, multi user shared broadband speed will be lower.

This equipment has been tested and found to comply with the limits for a Class B digital device, pursuant to part 15 of the FCC Rules. These limits are designed to provide reasonable protection against harmful interference in a residential installation. This equipment generates, uses and can radiate radio frequency energy and, if not installed and used in accordance with the instructions, may cause harmful interference to radio communications. However, there is no guarantee that interference will not occur in a particular installation. If this equipment does cause harmful interference to radio or television reception, which can be determined by turning the equipment off and on, the user is encouraged to try to correct the interference by one or more of the following measures:

- Reorient or relocate the receiving antenna.
- Increase the separation between the equipment and receiver.
- Connect the equipment into an outlet on a circuit different from that to which the receiver is connected.
- Consult the dealer or an experienced radio/TV technician for help.

Caution: Any changes or modifications to this device not explicitly approved by manufacturer could void your authority to operate this equipment. This device complies with part 15 of the FCC Rules. Operation is subject to the following two conditions: (1) This device may not cause harmful interference, and (2) this device must accept any interference received, including interference that may cause undesired operation. This equipment complies with FCC RF radiation exposure limits set forth for an uncontrolled environment.