

**COMFAST**

## **Quick Installation Guide**



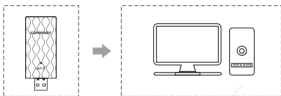
Driver Installation  
Version 1.0

# 1 Hardware installation

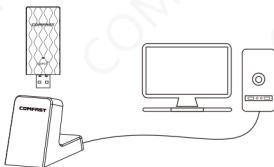
There are two ways to install the network card;

Note: The picture is a simplified schematic diagram, please refer to the actual product for details.

(1) Insert the network card directly into the USB port of the computer;



(2) Connect the computer USB port through the USB extension cord base (USB extension base needs to be purchased separately);



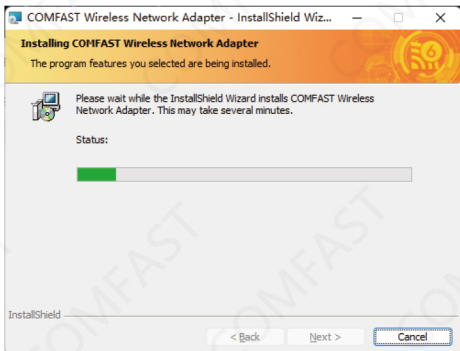
Note: When using a desktop computer, it is recommended to use a USB extension cord base to connect to the port on the back of the computer case (some desktop ports have insufficient power supply or cannot be used), and extend it to the Desktop computer usb ports.

## 2 Driver Installation

2-1 Open the driver folder and select the corresponding driver according to the system version, for example: double-click comfast setup x64.exe on a 64-bit system to open the installer; (If there is no CD-ROM driver, please go to the official website <http://www.sz-comfast.com> to download and install the driver)

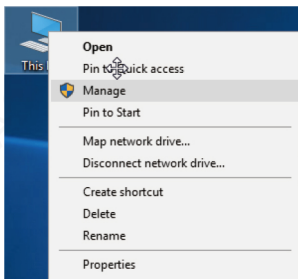


2-2 Then the driver will Automatically install.

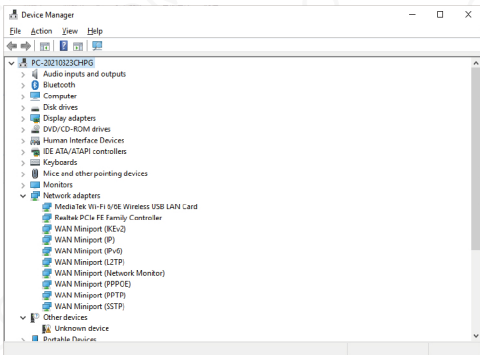


2-3 After the installation is completed, it is recommended to restart the computer. If there is work in progress or files being written, you can restart it later. If there is nothing else, it is recommended to restart immediately;

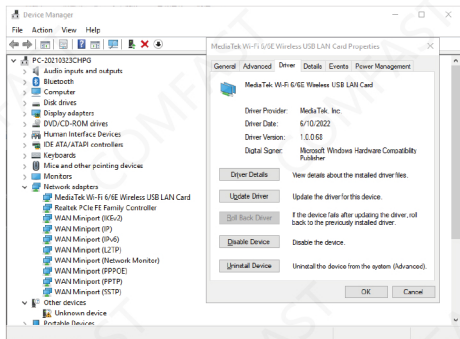
2-4 After restarting, the driver installation is complete, you can move the mouse to My Computer, right-click and select Manage to enter the management interface to view the driver status;




2-5 After entering the management page, click Device Manager, Network Adapter in turn, you can see the installed network card driver (Note: This step requires the network card to be connected to the computer to see it.)



2-6 Double-click to view the device details. If there is no abnormality, the driver is running normally as shown in the figure below and the driver details can be viewed;

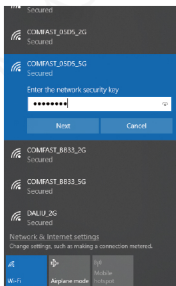


## 3 Network connection settings


3-1. After confirming that the driver is installed correctly, you can double-click the wireless network card icon  in the lower right corner, and click the icon with the left mouse button. The computer will display the connectable wireless

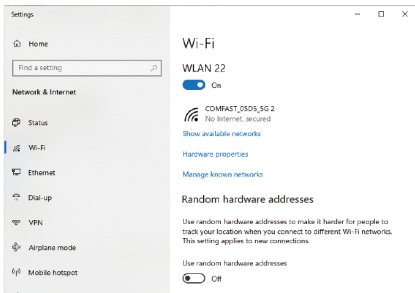


3-2. Click the wireless network you want to connect to and enter the password to connect.



## 4 Network connection status

4-1. After the network is connected, the computer system icon will change to , and then you can right-click the icon and select "Open "Network and Internet" settings" to enter the setting selection interface.



4-2 Click the "Wi-Fi" option, and then click Show connected wireless, you can view the current IP, MAC address, gateway, driver version, etc. of the wireless.



The screenshot shows the Windows Settings application window titled "Settings". The current view is for a Wi-Fi network named "COMFAST\_05D5\_5G 2". Under the "Properties" section, the following information is displayed:

|                          |   |
|--------------------------|---|
| SSID:                    | COMFAST_05D5_5G                                       |
| Security type:           | WPA2-Personal   |
| Network band:            | 5 GHz   |
| IPv6 address:            | fd3f6b6c869c:dca<br>fd3f6b6c869c:05538:3b3e:cbf4:9617 |
| Link-local IPv6 address: | fe80::5538:3b3e:cbf4:9617%121                         |
| IPv6 DNS servers:        | fd3f6b6c869c:1<br>fd3f6b6c869c:1                      |
| IPv4 address:            | 192.168.10.159  |
| IPv4 DNS servers:        | 192.168.10.1  |
| Manufacturer:            | MediaTek, Inc.  |
| Driver version:          | 1.0.0.68  |
| Physical address (MAC):  | ED-E1-A9-34-A4-57                                     |

A "Copy" button is visible at the bottom left of the settings card.



# Maintenance Regulations

Dear Valued Clients,

Thank you for purchasing **COMFAST** products. To protect your rights and interests in after-sales service, please read the following maintenance regulations.

**The following do not belong to free maintenance, our company can provide paid service, please note:**

- Failure to require the installation manual, use, maintenance, storage led to product failure or damage;
- Beyond the limited warranty, the warranty period; Unauthorized alteration, tearing up the product bar code;
- Without authorization to change the settings file or inherent disassemble;
- Unexpected factors or human actions lead to product damage, such as improper input voltage, temperature, watermechancial damage, break, rust or oxidation product of serious, etc;
- The damage caused by the transportation, loading and unloading caused by the customer's return for repair; the product failure or damage caused by force majeure such as earthquake, fire, lightning, etc.; Other non-product itself, design, technology, manufacturing, quality and other quality problems caused by the failure damage.

## Customer Data

|                         |  |
|-------------------------|--|
| Name                    |  |
| Address                 |  |
| Model                   |  |
| MAC No.                 |  |
| Machine unit sales      |  |
| Sale of machine address |  |
| Date of sale machine    |  |
| TEL                     |  |
| Post Code               |  |
| Invoice No.             |  |

### Certificate Of Qualification

Quality Inspector \_\_\_\_\_

Production Date \_\_\_\_\_

Executive Standard YD/1965-2009 \_\_\_\_\_



# Copyright Information

## Statement

**Shenzhen Four Seas Global Link Network  
Technology CO.,Ltd.  
Company all rights reserved.**

Without our official writ permission, no unit or individual shall be copied, reproduced, transcribed or translated in part or whole book. In any form or by any means(electronic,mechanical,printing,recording or other possible means)or for the propagation of goods any commercial, profitable purposes.

**COMFAST** is the registered trademark of Shenzhen Four Seas Global Link Network Technology Co.,Ltd.Company. All other trademarks or registered trademarks mentioned in this document, by respective owners.

Product specifications and information mentioned in this manual are for reference on subject to updates without notice. Unless there are other special agreed, this manual is used only as a user guide. All statements, information, etc. are not constitute any form of guarantee

Manufacturer: Shenzhen Four Seas Global Link Network  
Technology Co.,Ltd.Company  
Address: Room 607-610,Block B Tao JINDI Electronic  
Business Incubation Base, Tenglong Road, Longhua  
District, Shenzhen, China  
Hotline: +86 755 83790059  
Website: [www.comfast.cn](http://www.comfast.cn) / [www.szcomfast.com](http://www.szcomfast.com)

#### FCC Caution:

Any Changes or modifications not expressly approved by the party responsible for compliance could void the user's authority to operate the equipment.

This device complies with part 15 of the FCC Rules. Operation is subject to the following two conditions: (1) This device may not cause harmful interference, and (2) this device must accept any interference received, including interference that may cause undesired operation.

#### IMPORTANT NOTE:

Note: This equipment has been tested and found to comply with the limits for a Class B digital device, pursuant to part 15 of the FCC Rules. These limits are designed to provide reasonable protection against harmful interference in a residential installation. This equipment generates, uses and can radiate radio frequency energy and, if not installed and used in accordance with the instructions, may cause harmful interference to radio communications. However, there is no guarantee that interference will not occur in a particular installation. If this equipment does cause harmful interference to radio or television reception, which can be determined by turning the equipment off and on, the user is encouraged to try to correct the interference by one or more of the following measures:

- Reorient or relocate the receiving antenna.
- Increase the separation between the equipment and receiver.
- Connect the equipment into an outlet on a circuit different from that to which the receiver is connected.
- Consult the dealer or an experienced radio/TV technician for help.

#### FCC Radiation Exposure Statement:

The device has been tested and comply with FCC SAR limits.  
And keep the device minimum 5mm from the body when normal use.