

SL300I/37

WIRELESS MULTIMEDIA LINK 1x

12NC: 9082 100 02196

IC ID: IC
FCC ID ID:
EXTERNAL SUPPLY 12V \pm 2.5A

UPC



MODEL NO: SL300I/37



SERIAL NO:



PHILIPS CONSUMER ELECTRONICS NORTH AMERICA
KNOXVILLE, TENNESSEE 37914-1810, USA

CARTON PRINTED IN CHINA

MADE IN CHINA

USA Limited Warranty Registration

SL300I/37

KT

MODEL NUMBER

SERIAL NUMBER

MODEL NO: SL300I/37

SERIAL NO:

MODEL NO: SL300I/37

MADE IN CHINA

SERIAL NO:

PHILIPS CONSUMER ELECTRONICS NORTH AMERICA
KNOXVILLE, TENNESSEE 37914-1810, USA

PHILIPS



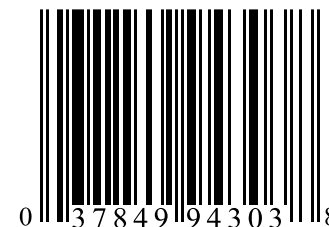
WIRELESS MULTIMEDIA LINK

1x

MODEL NO: SL300I/37

12NC: 9082 100 02196

UPC



MODEL NO: SL300I/37

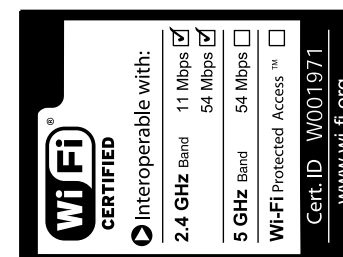
MADE IN CHINA

SERIAL NO:

DIMENSIONS / GROSS WEIGHT / NET WEIGHT:
13.0 x 9.8 x 5.8inch / 4.8pound / 4.1pound

PHILIPS CONSUMER ELECTRONICS NORTH AMERICA
KNOXVILLE, TENNESSEE 37914-1810, USA

CARTON PRINTED IN CHINA





MODEL NO: EL300050



This device complies with Part 15 of the FCC Rules and with RSS-210 of Industry Canada.

Operation is subject to the following two conditions:

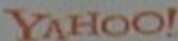
- (1) this device may not cause harmful interference, and
- (2) this device must accept any interference received, including interference that may cause undesired operation.

SERIAL NO: KT000408000009





A broadband Internet connection gives you access to a huge collection of online multimedia content. Today's selection of Internet Entertainment is offered to you by:



System Requirements

Source set and / or TV device

PC Link

PC with 233 MHz Pentium, 4MB RAM, HDD (with 10MB of free space) and CD-ROM drive running Windows 95/98/2000/ME/XP or MAC OS X.

Wireless USB adapter (USB v1.1 or higher) or wired/wireless (IEEE 802.11g compliant) home network.

Internet services or online upgrades

Direct Broadband (cable Modem, 5120bps recommended for video streaming) Internet connection (e.g. DSL, cable Modem or Satellite broadband) via (wireless) gateway router or PC with Internet Connection Sharing (supported from Windows98SE onwards).

MyPhilips.com

PC with Internet access, browser and e-mail address.

Specifications

Dimensions: 64 x W x D: 7.3 x 1.8 x 7.1 inches

Power supply: 110-240V, 50-60 Hz

Power consumption / standby power: Approx. 14.5 Watt / 1 Watt

Weight: Approx. 1.87 pounds

Supported codecs:

Audio: MP3, MP3pro, PCM, WAV

Picture: JPEG, BMP, GIF

Video: MPEG1, MPEG2, MPEG4, DivX, XviD

Wireless: 802.11g

Networking: Universal Plug & Play

Output connectors:

Video: 1 x Composite (15pin), 1 x S-Video (15pin)

Audio: 2 x L/R stereo (3.5mm)

Ethernet RJ-45

Contents of package

- Wireless Multimedia link unit
- Remote Control (batteries included)
- Cables (power, RCA audio/video, RCA audio)
- User guide and PC media manager application CD-ROM

Check

www.philips.com/streamium

for latest news, available updates & online help.

SL300I/37

WIRELESS MULTIMEDIA LINK 1x

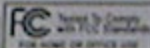
12NC:9082 100 02196

UPC



IC ID: IC
FCC ID ID:
EXTERNAL SUPPLY 12V~2.5A

MODEL NO: SL300I/37



SERIAL NO:



PHILIPS CONSUMER ELECTRONICS NORTH AMERICA
KNOXVILLE, TENNESSEE 37914-1810, USA

ITE E 240194

CARTON PRINTED IN CHINA

MADE IN CHINA



Microsoft and Windows are trademarks or registered trademarks of Microsoft Corporation in the United States and/or other countries.
All other brands and product names are registered trademarks or trademarks of their respective owners.