

INTERTEK TESTING SERVICES

Report No.: 0308/44
Model No.: A/A
R2281
KR

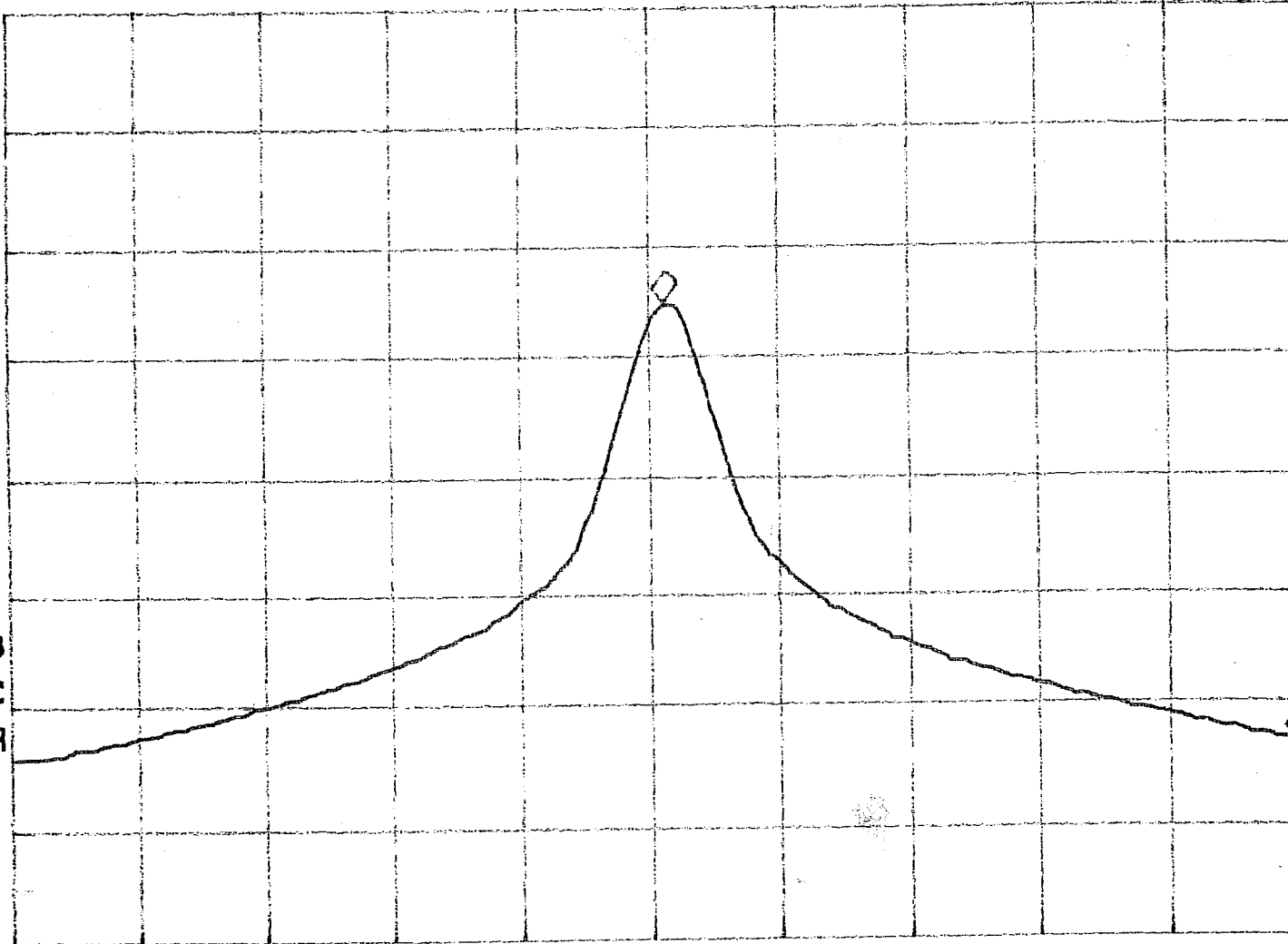
Pursuant to FCC Part 15 Section 15.235 Emissions Requirement

MKR 48.8 KHz
-36.27 dB

REF 107.0 dB μ V AT 10 dB

PEAK
LOG
10
dB/

VA SB
SC FC
CORR



Tested By: LL
(Kenk Wang)

Date: 23/5/03

Checked By: [Signature]
(IVAN)

Date: 23/5

Test Result: Pass / Fail / NA

START 49.8100 MHz
#RES BW 3.0 KHz

#VBW 3 KHz

STOP 49.9100 MHz
#SWP 100 msec