

hp

REF 127.0 dB μ V

AT 30 dB

MKR 28.5 KHz

-26.13 dB

PEAK

LOG

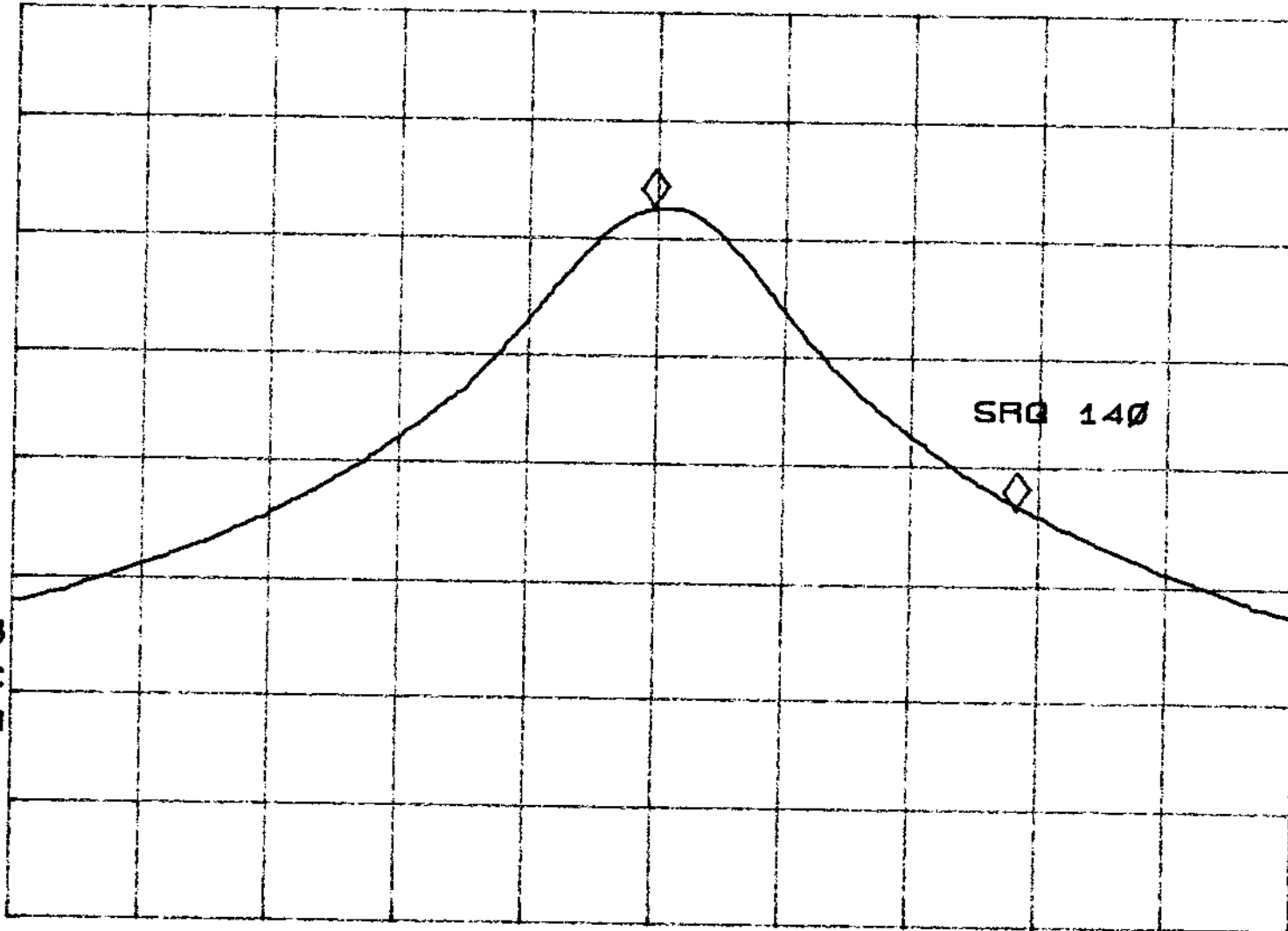
10

dB/

VA SB

SC FC

CORR



START 49.8100 MHz

#RES BW 10 KHz

#VBW 3 KHz

STOP 49.9100 MHz

#SWP 750 msec