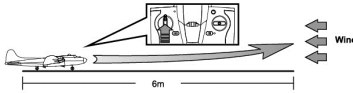


Take off from land

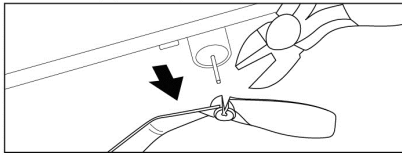
To take off on ground, set the plane on a smooth surface (minimum 6m). Direct the plane to the wind direction and push the throttle stick to full speed. The plane will take off after 3-5m running on the ground. Pull the throttle down to middle position and control the direction (left or right) through the direction stick.



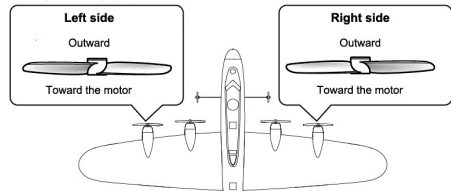
Tips:
Always pointing your plane with the nose facing to the wind.

Replacement of propeller

1. Remove the broken propeller from the plane.



2. Identify the correct propeller and insert it into the motor shaft.



Caution:
Propeller should be replaced by adult. Motor shafts may contain sharp point!

TroubleShooting

Symptom	Diagnosis	Solution
Propeller does not move	- On/Off switch is at "OFF" position. - Weak battery power. - Band selection on transmitter is incorrect.	- Set the switch to "ON". - Recharge/replace the batteries. - Select the correct band.
The power indicator on transmitter is blinking	- Weak transmitter battery power.	- Replace the transmitter batteries with new ones.
Failed to take off or sudden drop during flight	- Plane does not run toward the wind direction. - Weak battery power.	- Direct the plane towards the wind direction before take off. - Recharge the plane battery.
The plane is out of control	- Other radio control device occupies the same frequency near your area of operation. - Out of the control range. - High frequency interference emitted from high-voltage lines, transformers and other buildings.	- Move to another location to operate the plane. - Ensure the antenna is fully extended. The transmission range is up to 50 meters in open space. - Avoid operating the plane in the presence of high-voltage lines or transformers.

R/C Speedy Plus

WARNING:
CHOKING HAZARD - Small parts.
Not for Children under 3 years.

"This product is in compliance with the essential requirements and other relevant provisions of Directive 1999/5/EC."



For Ages 10+
Ab 10 Jahre
Pour 10 ans et plus
Voor leeftijd 10+
Para 10+ años
Dai 10 anni in su

Do not touch the running propeller!
Do not play above someone's head!
Adult supervision is required!

Safety Precautions:

- Warning: Changes or modifications to this unit not expressly approved by the party responsible for compliance could void the user's authority to operate the equipment.
- Keep hands, hair and loose clothing away from the propeller when power switch is turned ON.
- Turn off transmitter and the Plane when not in use.
- Remove battery from transmitter when not in use.
- Parental guidance is recommended for the flight.
- Keep your plane in your sight so that you can supervise it at all the time.
- New and alkaline batteries are recommended for use in transmitter to obtain best and maximum performance.
- You are advised to replace with new batteries as soon as the function becomes impaired.
- Users should keep and retain this information for future reference.
- Users should keep strict accordance with the instruction manual while operating the product.
- Your Transmitter charger is later-made for the Li-Poly rechargeable battery used in plane. Do not use it to charge any battery other than that in the plane.

FCC Statements

This device complies with part 15 of the FCC rules. Operation is subject to the following two conditions:
1) This device may not cause harmful interference, and
2) This device must accept any interference received, including interference that may cause undesired operation.

NOTE: This equipment has been tested and found to comply with the limits for a Class B digital device, pursuant to Part 15 of the FCC Rules. These limits are designed to provide reasonable protection against harmful interference in a residential installation. This equipment generates, uses and can radiate radio frequency energy and, if not installed and used in accordance with the instructions, may cause harmful interference to radio communications. However, there is no guarantee that interference will not occur in a particular installation. If this equipment does cause harmful interference to radio or television reception, which can be determined by turning the equipment off and on, the user is encouraged to try to correct the interference by one or more of the following measures:
- Reorient or relocate the receiving antenna.
- Increase the separation between the equipment and receiver.
- Connect the equipment into an outlet on a circuit different from that to which the receiver is connected.
- Consult the dealer or an experienced radio/TV technician for help.

Battery Cautions:

- Non-rechargeable batteries are not to be recharged.
- Rechargeable batteries are to be removed from the toy before being charged. (Transmitter only)
- Rechargeable batteries are only to be charged by an adult.
- Different types of batteries or new and used batteries are not to be mixed. (Transmitter only)
- Only batteries of the same or equivalent type as recommended are to be used.
- Batteries are to be inserted with correct polarity.
- Exhausted batteries are to be removed from the toy. (Transmitter only)
- The supply terminals are not to be short-circuited.
- Do not mix old and new batteries. (Transmitter only)
- Do not mix alkaline, standard (carbon-zinc) or rechargeable (such as Ni-Cd, NiMH) batteries. (Transmitter only)

Special Note to Adults:

- Regularly examine for damage to the plug, enclosure and other parts.
- In the event of any damage, the toy must not be used with the transmitter charger until the damage has been repaired.
- This toy must only be used with the recommended charger.
- Do not try to charge other batteries with transmitter charger.

Your plane is equipped with a Li-Poly battery, please also pay attention to the following stations for safe use:

- Do not dispose the battery in fire or heat.
- Do not use or leave the battery near a heat source such as fire or heater.
- Do not strike or throw the battery against hard surface.
- Do not immerse the battery in water, and keep the battery in a cool dry environment.
- When recharging, only use the battery charger specifically for that purpose.
- Do not over-charge the battery.
- Do not connect the battery to an electrical outlet.
- Do not directly solder the battery and pierce the battery with a nail or other sharp object.
- Do not transport or store the battery together with metal objects such as necklaces, hairpins etc.
- Do not disassemble or alter the battery.
- Charge the battery every 8 months.
- Turn off your equipment power switch after use.
- As for a used battery, please recycle after covering the battery terminals with insulation tape or inserting it to an individual toy-bag.

Care and Maintenance:

- Always remove batteries from the toy when it is not being used for a long period of time. (Transmitter only)
- Wipes the toy gently with a clean damp cloth.
- Keep the toy away from direct heat.
- Do not submerge the toy into water that can damage the electronic assemblies.

Note:

- Parental guidance is recommended when installing or replacing batteries.
- Under the environment with electrostatic discharge, the sample may malfunction and require user to reset the sample.

The crossed-out dustbin symbol indicates that batteries are harmful to the environment. Rechargeable batteries, button cells, battery packs, etc. must not be put in the household waste. Batteries are harmful to health and the environment. Please help to protect the environment from health risks. Tell your children to dispose of batteries properly by taking them to the local collecting points. This way batteries are recycled safely.

WEEE
When this appliance is out of use, please remove all batteries and dispose of them separately. Bring electrical appliances to the local collecting points for waste electrical and electronic equipment. Other components can be disposed of in domestic refuse.

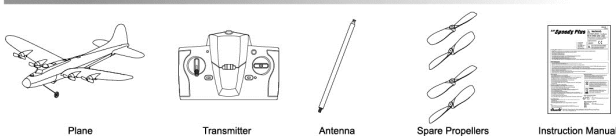
Battery requirement for the Plane:

- Power Supply: 3.7V
- Rating: 1 x 3.7 V Li-Poly Rechargeable Battery Pack (included)
- Capacity: 200 mAh

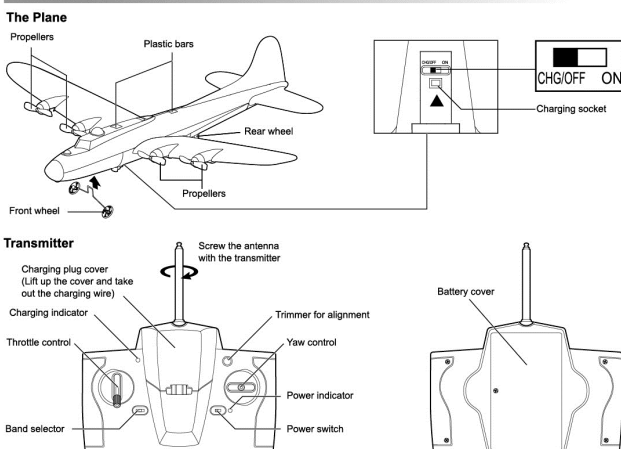
Battery requirement for Transmitter:

- Power Supply: 3.7V
- Rating: 1 x 3.7 V, 3.6 V
- Capacity: 6 x 1.5 V AA/LR6/AM3 (not included)

Content



Parts Index



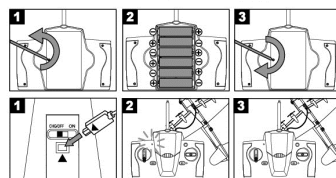
Flying Preparation

Transmitter batteries installation:

1. Make sure the power switch is on "OFF" position.
1. Loosen screw on the battery compartment by turning a screw driver anticlockwise.
2. Insert 6 AA size batteries in the battery compartment according to the polarity shown inside.
3. Tighten the screw to close the battery compartment.

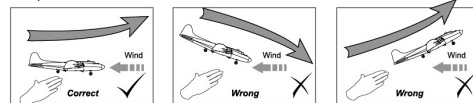
Plane battery charging:

1. Switch off the plane and the transmitter. Draw out the charging plug from the transmitter and connect it to the charging socket on the plane.
2. Switch on the transmitter. The charging process will begin automatically and the green charging indicator will light up.
3. Unplug the charging plug after the charging indicator turns off, charging is completed. It takes about 30 minutes of charging time for every 5 minutes flight. Charging time depends on the battery status.

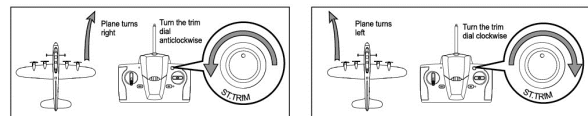


Flying Instructions

1. Screw the antenna onto the transmitter.
2. Set the band on the transmitter the same as the plane's through the band selector.
3. Switch the plane on. Make sure the transmitter is off.
4. Switch on the transmitter; make sure the throttle stick is at the minimum position.
5. Set the trim dial to the central position.
6. Point the plane toward the wind blowing direction and throw it out horizontally. Immediately afterwards, push the throttle stick up to the full speed.



7. If the plane turns left involuntarily, turn the trim dial to the right until the helicopter flies straight. Likewise, if the plane turns right involuntarily, turn the trim dial to the left.



8. Push the direction stick toward left to turn the plane anticlockwise, and push the direction stick toward right to turn it clockwise. The plane turns depending on the speed difference between the left propellers and the right propellers.
9. Push the throttle stick up to increase the flying speed and push the throttle stick down to decrease the speed.

Throttle control	Yaw control	Movement
		Take off or ascending
		Landing or descending
		Turn left
		Turn right

10. Pull the throttle stick down slowly to stop the propellers and land the plane.
11. If the plane has been spoiled a little, you can fix it with adhesive tape.

Flying tips

Playing environment and weather:

- a) Indoors: in calm air. Avoid flying the plane near air circulation, air-conditioner and furnishings.
- b) Outdoors: on a sunny day with calm air or slight breeze. Never fly the plane on a windy day. It is recommended to fly the plane over a soft surface, e.g. grass field. Do not fly the plane when it is raining, snowing or near high power cables.

Taking off

Take off by throwing

