

4. Battery Installation & Charging

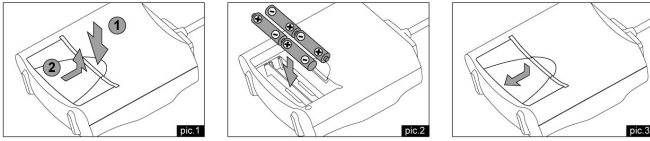
4.1 Batteries

- The Helicopter is powered by 1 x 7.4 V rechargeable battery pack.
- The Transmitter is powered by 4 x 1.5 V "AA" size batteries.

4.2 Battery Installation : Transmitter

Make sure the power switch is on "OFF" position.

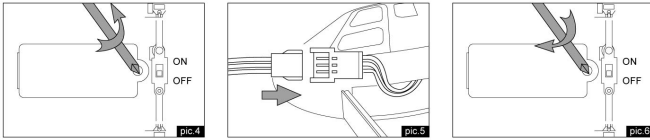
1. Press down the button on battery cover, and then follow the arrow ➊ direction to push out the battery cover. (pic.1)
2. Put 4 AA size batteries in the battery compartment as per the polarity shown inside. (pic.2)
3. Place back the battery cover. (pic.3)



4.3 Battery Installation : Helicopter

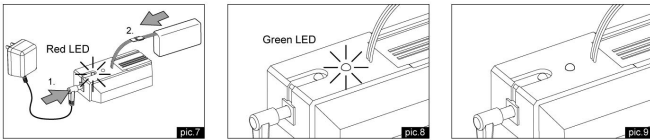
Make sure the power switch is on "OFF" position.

1. Use screwdriver to loosen screw in counter-clockwise. (pic.4)
2. Connect the plug of the battery pack to the helicopter. (pic.5)
3. Close the battery cover using a screwdriver. (pic.6)



4.4 Battery Charging:

1. Connect the plug of the AC/DC adaptor to the charger. The red LED will light up. (pic.7) Connect the plug of the battery pack to the charger. The green LED will flash (pic.8)
2. After charging is completed, the green LED indicator will turn off automatically. (pic.9)
3. The helicopter can have about 5-6 minutes of play time after 20-45 minutes charging.



The Red & Green LED have the following indication:

MODE	Red LED	Green LED
Charging	On	Flash
Error	Flash	Off
Charging completed	On	Off
No battery connected	On	Off

2. Precautions, Warning & Statement

Safety Precautions:

Warning: Charger or modification is not expressly approved by the parts responsible for compliance could void the user's authority to operate the equipment.

FCC Statements

This device complies with part 15 of the FCC rules. Operation is subject to the following two conditions:

- 1) This device may not cause harmful interference, and
- 2) This device must accept any interference received, including interference that may cause undesired operation.

NOTE: This equipment has been tested and found to comply with the limits for a Class B digital device, pursuant to Part 15 of the FCC Rules. These limits are designed to provide reasonable protection against harmful interference in a residential installation. This equipment generates, uses and can radiate radio frequency energy and, if not installed and used in accordance with the instructions, may cause harmful interference to radio communications.

However, there is no guarantee that interference will not occur in a particular installation. If this equipment does cause harmful interference to radio or television reception, which can be determined by turning the equipment off and on, the user is encouraged to try to correct the interference by one or more of the following measures:

- Reorient or relocate the receiving antenna.
- Increase the separation between the equipment and receiver.
- Connect the equipment into an outlet on a circuit different from that to which the receiver is connected.
- Consult the dealer or an experienced radio/TV technician for help.

Care and Maintenance:

- Always remove batteries from the toy when it is not being used for a long period of time.
- Wipe the toy gently with a clean damp cloth.
- Keep the toy away from direct heat.
- Do not submerge the toy into water that can damage the electronic assemblies.

Battery Cautions:

- Non-rechargeable batteries are not to be recharged
- Rechargeable batteries are to be removed from the transmitter before being charged (Transmitter only).
- Rechargeable batteries are only to be charged by an adult
- Different types of batteries or new and used batteries are not to be mixed (Transmitter only).
- Only batteries of the same or equivalent type as recommended are to be used.
- Batteries are to be inserted with correct polarity.
- Exhausted batteries are to be removed from the transmitter.
- The supply terminals are not to be short-circuited.
- Do not mix old and new batteries. (Transmitter only)
- Do not mix alkaline, standard (carbon-zinc) or rechargeable (such as Ni-Cd, Ni-MH) batteries. (Transmitter only)

Helicopter is equipped with a Li-Poly rechargeable battery, please also pay attention to the following cautions for safety use:

- Do not dispose the battery in fire or heat.
- Do not use or leave the battery near a heat source such as fire or heater.
- Do not strike or throw the battery against hard surface.
- Do not immerse the battery in water, and keep the battery in a cool dry environment.
- When recharging, only use the battery charger specifically for that purpose.
- Do not over-charge the battery.
- Do not connect the battery to an electrical outlet.
- Do not directly solder the battery and piece the battery with a nail or other sharp object.
- Do not transport or store the battery together with metal objects such as necklaces, hairpins etc.
- Do not disassemble or alter the battery.
- Charge the battery every 6 months.
- Turn off your equipment power switch after use.
- As for a used battery, please recycle after covering the battery terminals with insulation tape or inserting it to an individual poly-bag.

Note:

- Parental guidance is recommended when installing or replacing batteries.
- Under the environment with electrostatic discharge, the sample may malfunction and requires user to reset the sample.
- New and alkaline batteries are recommended to use in this toy to obtain best and maximum performance.

Special Note to Adults:

- Regularly examine for damage to the plug, enclosure and other parts. In the event of any damage, the toy must not be used with the transmitter charger until the damage has been repaired.
- This toy is not intended for children under 3 years old.
- This toy must only be used with the recommended charger.
- Do not try to charge other batteries with transmitter charger.

Battery requirement for Helicopter:

Power Supply	DC 7.4 V, 4.39 W
Batteries	1 x 7.4 V Li-Poly Rechargeable Battery Pack (included)
Capacity	300 mAh

Battery requirement for Transmitter:

Power Supply	DC 6 V, 4.14 W
Batteries	4 x 1.5 V "AA"/LR6/AM5 (not included)

For ages 15+
Ab 15 Jahre
A partir de 15 ans
Lentijät vanaf 15 jaar
A partir de 15 años



Key Features

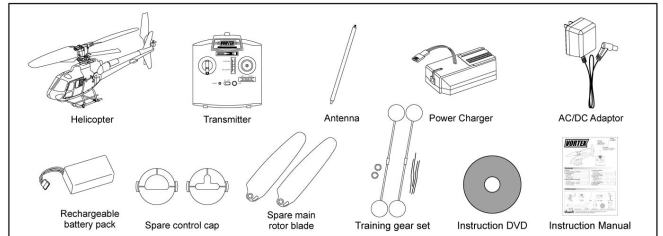
- Three channels digital proportional control
- Incredible Stability And Complete Control
- Hobby Grade Flying Performance



Contents

1. Pack List	1	5. Transmitter Operation	
2. Precautions, Warning & Statement	2	5.1 Basic Idea	5
3. Parts Identification	3	5.2 Control Method	5
3.1 Helicopter	3	5.3 Trimmer adjustment	6
3.2 Transmitter	3	6. Environment for Flight	7
3.3 Power Charger	3	7. Replacement	
3.4 AC/DC Adaptor	3	7.1 Training Gear Set	7
4. Battery Installation and Charging		7.2 Control Cap	7
4.1 Batteries	4	7.3 Main Rotor Blade	7
4.2 Battery Installation : Transmitter	4	8. Flight Technique & Tips	8
4.3 Battery Installation : Helicopter	4	9. Trouble Shooting	8
4.4 Battery Charging	4	10. Specification	8

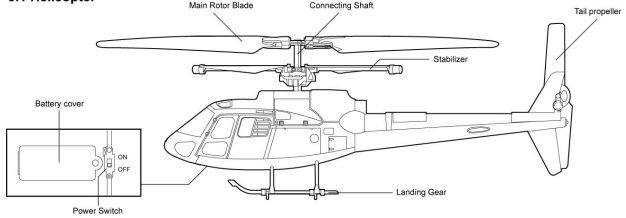
1. Pack List



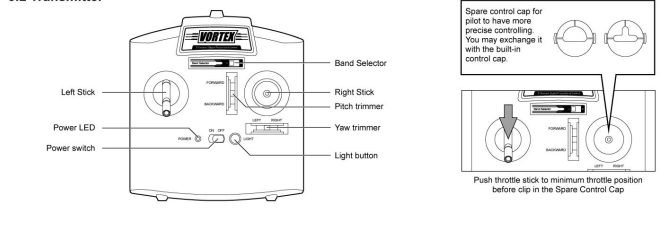
Silverlit® Silverlit France, Espace Green Parc, Route de Villepelle, 91200 Saint Pierre du Perray / France.
©2009 Silverlit Toys Manufactory Limited. All rights reserved.

3. Parts Identification

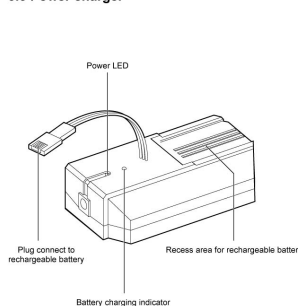
3.1 Helicopter



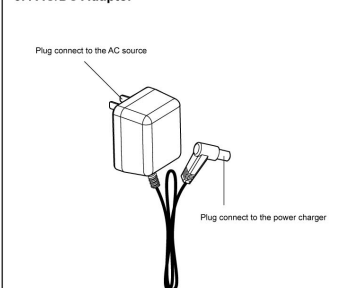
3.2 Transmitter



3.3 Power charger



3.4 AC/DC Adaptor



8. Flight Technique & Tips

Tip! OPERATION

- After you crash your helicopter you need to switch the ON/OFF button to "ON" again to restart the helicopter.
- Never attempt to fly with antenna not fully extended. If the transmitter is used while the antenna is not fully extended, the radio wave will not reach as and it could take a crash.
- Never operate ON/OFF switch of the flying unit without ensuring that the battery level indicator of the transmitter lights up. If the flying unit power is switched on while the transmitter is not functioning, there is a risk that unintended movement of the flying unit will occur.
- Make sure the antenna is tightened and test flight before playing. If the antenna were to loosen and detach during flying, then no signal can be transmitted and the flying unit will crash.

Tip! CONTROLLING

- For controlling the sticks on transmitter, try not to push the sticks immediately to the extreme position. It should be like steering a bicycle rather than pressing computer game sticks.
- For the novice Pilot (after the trimming procedure is completed), it is highly recommended to focus exclusively on learning to control the Throttle stick first. If the helicopter turns around by itself there is no need to keep it straight. For the first flight, it is important to learn to keep the helicopter at a constant altitude of around 1 meter with small inputs on the Throttle stick. Once the Pilot masters this, he may start learning to take control with the direction stick.

Tip! SAFETY

- Parents: Please read the operating instructions carefully with your children prior to the first use.
- Pay attention! Do not fly helicopter near persons and animals.
- Always keep your eyes on helicopter and prevent it from landing or crashing near your head, your body, or on other people.
- Never take apart or attempt to modify the product. This could damage the product.
- Always keep rotating parts away from your hands, hair or face to avoid injury. Stand during operation in order to get out of the way of helicopter quickly if necessary.
- Always switch the helicopter and the transmitter to the "OFF" position when not flying.
- Never allow young children to use this product without adult supervision.
- Never use this product if it has damaged parts.
- Never hold or throw any objects into the running rotors.
- Keep hands, hair and loose clothes away from the propeller when the power switch is ON.
- Keep instructions for future reference.
- Warning! Do not touch the running propeller.
- Training by experienced adults is required for flying helicopter.
- Attention! Risk of eye injuries! Keep a safety distance of at least 1 m.

9. Trouble Shooting

Symptom	Cause	Correction
Propeller can't move.	- ON/OFF Switch is OFF. - Weak Battery.	- Set switch to ON. - Re-charge the battery pack.
The power indicator on transmitter blinking.	- Weak power of transmitter.	- Change new batteries in transmitter.
Suddenly stop and drop down when flying.	- Weak power.	- Re-charge the battery pack.
Helicopter does not react.	- Channel selection on transmitter is not correct.	- Reset the correct channel.
Loss of control.	- Another radio control device using the same frequency and channel is operated near your helicopter. - Out of the control range of distance.	- Move to another place where without radio frequency interference from another device. - Ensure the antenna is fully extended. The control range for helicopter is up to 50 meters.

10. Specification

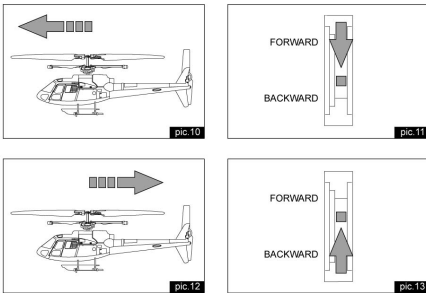
Transmitter		Power Charger	
Channel	A & B	AC/DC adaptor	230 V, 50 Hz
Frequency	27.145 MHz	Charging base	12V, 1 A
Modulation	AM		
Control range	50 meters		
Battery low detection	Yes Power LED blinks - per sec		
Power saving mode	Yes Power LED off		

Helicopter	
Gyro	Yes
Gyro control	Balance
Battery pack	7.4 V, 300 mAh Li-poly battery (included)

5.3 Trimmer Adjustment

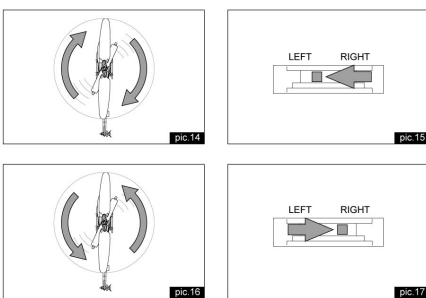
1. PITCH TRIMMER

- Gently push the throttle up to raise your helicopter about 0.5 to 1 meter high.
- When the helicopter keeps move forward (pic.10), adjust the pitch trimmer to backward till the moving stops. (pic.11)
- When the helicopter keeps move backward (pic.12), adjust the pitch trimmer to forward till the moving stops. (pic.13)



2. YAW TRIMMER

- Gently push the throttle up to raise your helicopter about 0.5 to 1 meter high.
- When the helicopter keeps turning clockwise (pic.14), adjust the yaw trimmer to left till the turning stops and go straight (pic.15).
- When the helicopter keeps turning counter clockwise (pic.16), adjust the yaw trimmer to right till the turning stops and go straight (pic.17).



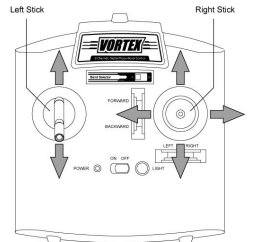
3. LIFT-OFF PROCEDURE (after Trimming procedure):

- Pull the helicopter on a smooth surface. Uneven floor surface will affect its lifting off.
- Slowly increase the throttle.
- DO NOT look at the transmitter but focus on the helicopter.
- As soon as the helicopter lifts (ground), reduce the throttle slightly. (in the worst case, helicopter will go back to the floor, but that is better than crashing against the ceiling).
- VERY gently add the throttle if the helicopter goes down.
- VERY gently reduce the throttle if the helicopter goes up.
- For turning, give short and small inputs to the direction stick. (most beginners will easily overcontrol the helicopter)
- For moving forward, turn the helicopter pointing to more open space before pushing the right stick.

5. Transmitter Operation

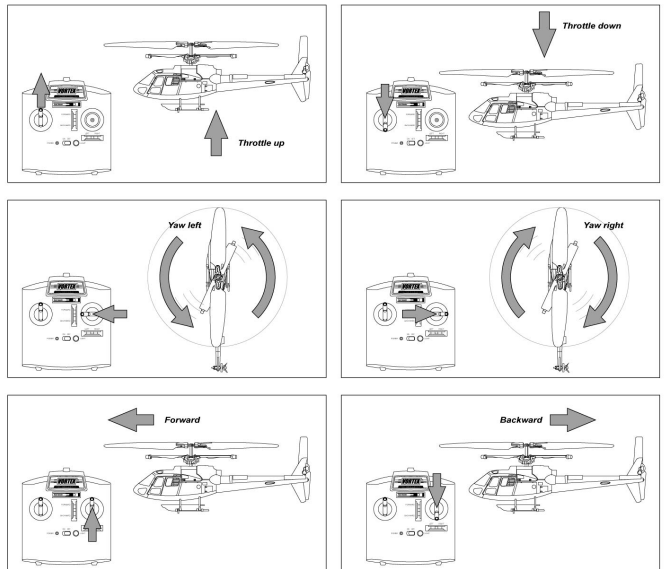
5.1 Basic Idea

- Screw the antenna on Transmitter.
- Set the band on transmitter the same to the helicopter.
- Set the left stick on transmitter to MINIMUM throttle, and then set the power on.
- Set the ON/OFF switch on helicopter to ON, the power indicator will flash.
- Place the helicopter on the ground with the tail point towards you and the nose facing away from you.



Left stick	Right stick	Action
↑	↑	Throttle up
↓	↓	Throttle down
→	→	Forward
←	←	Backward
↶	↶	Yaw left
↷	↷	Yaw right

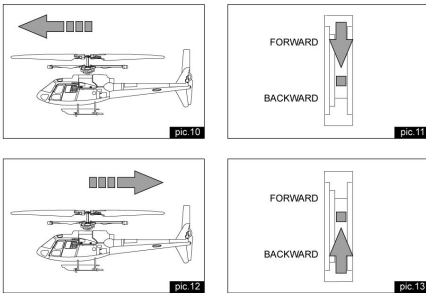
5.2 Control Method



5.3 Trimmer Adjustment

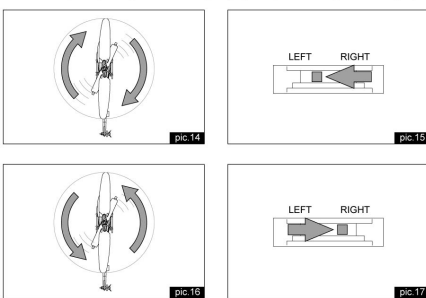
1. PITCH TRIMMER

- Gently push the throttle up to raise your helicopter about 0.5 to 1 meter high.
- When the helicopter keeps move forward (pic.10), adjust the pitch trimmer to backward till the moving stops. (pic.11)
- When the helicopter keeps move backward (pic.12), adjust the pitch trimmer to forward till the moving stops. (pic.13)



2. YAW TRIMMER

- Gently push the throttle up to raise your helicopter about 0.5 to 1 meter high.
- When the helicopter keeps turning clockwise (pic.14), adjust the yaw trimmer to left till the turning stops and go straight (pic.15).
- When the helicopter keeps turning counter clockwise (pic.16), adjust the yaw trimmer to right till the turning stops and go straight (pic.17).



3. LIFT-OFF PROCEDURE (after Trimming procedure):

- Pull the helicopter on a smooth surface. Uneven floor surface will affect its lifting off.
- Slowly increase the throttle.
- DO NOT look at the transmitter but focus on the helicopter.
- As soon as the helicopter lifts (ground), reduce the throttle slightly. (in the worst case, helicopter will go back to the floor, but that is better than crashing against the ceiling).
- VERY gently add the throttle if the helicopter goes down.
- VERY gently reduce the throttle if the helicopter goes up.
- For turning, give short and small inputs to the direction stick. (most beginners will easily overcontrol the helicopter)
- For moving forward, turn the helicopter pointing to more open space before pushing the right stick.

6. Environment for Flight

- Outdoor: It's better in a sunny day, and in calm wind or slight breeze.
- We suggest you can play it on grass to protect your plane when it impacts on ground.
- Do not play your helicopter when it is raining, snowing, or near high power cable.

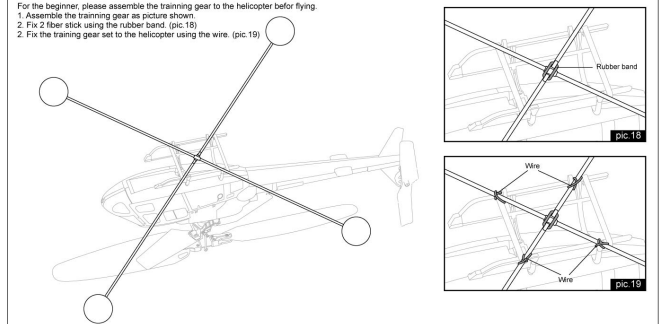
Precaution: Because of its light weight, it may be blown away under strong wind.

7. Replacement

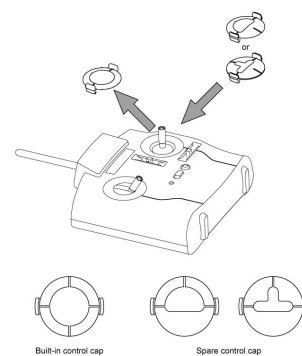
7.1 Training Gear Set

For the beginner, please assemble the training gear to the helicopter before flying.

1. Assemble the training gear as picture shown.
2. Fix 2 fiber stick using the rubber band. (pic.18)
2. Fix the training gear set to the helicopter using the wire. (pic.19)



7.2 Control Cap



7.3 Main Rotor Blade

