

INTERTEK TESTING SERVICES

Report No.: 0308/43
Model No.: N/A
82291
LA

Pursuant to FCC Part 15 Section 15.227 Emissions Requirement

hp

REF 97.0 dBμV

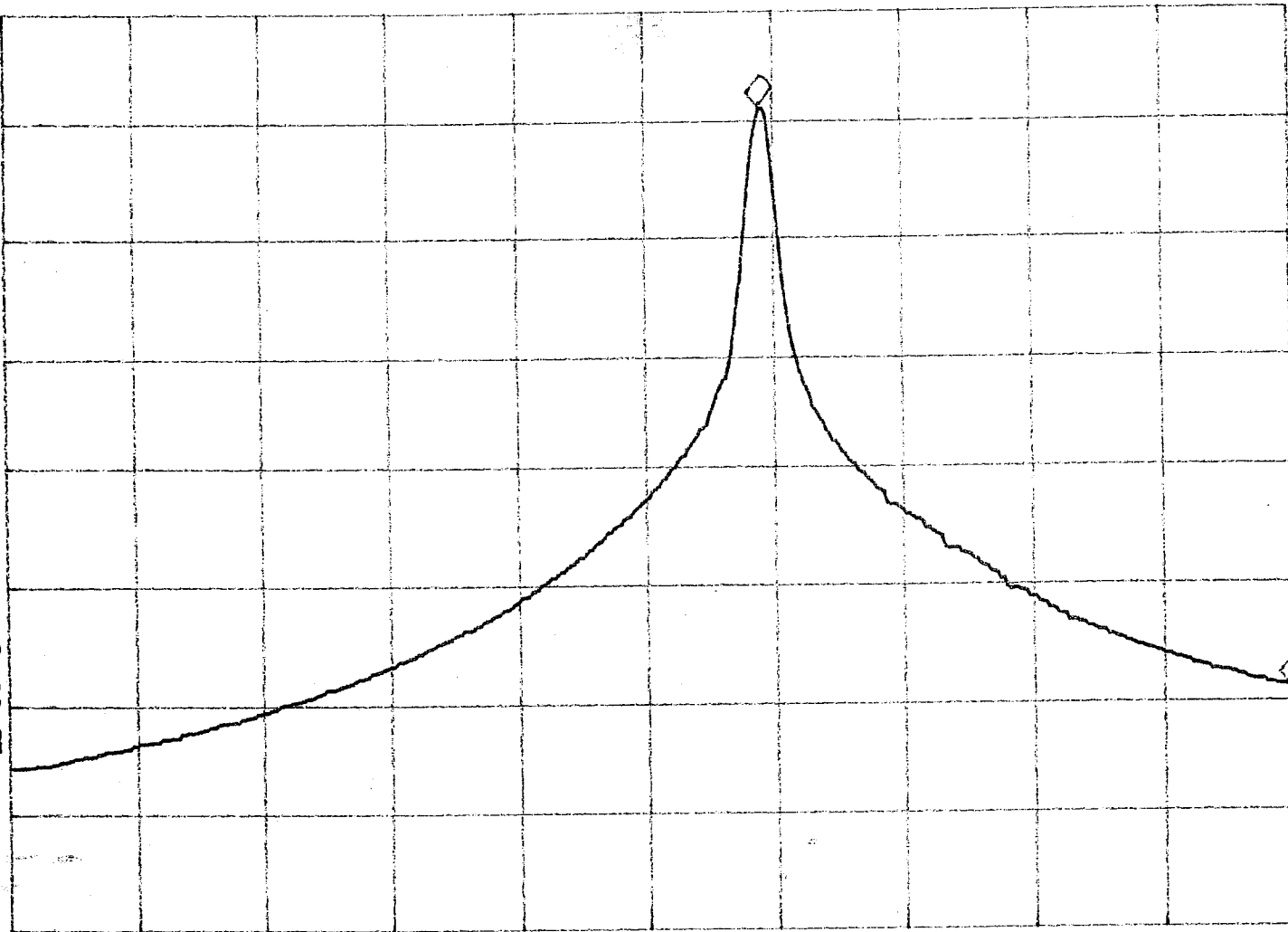
AT 10 dB

MKR 131.2 kHz

-50.24 dB

PEAK
LOG
10
dB/

VA SB
SC FC
CORR



Tested By: LA
(Kenneth Wong)
Date: 23/5/03

Checked By: [Signature]
(Liam)
Date: 28/5

Test Result: Pass / Fail / NA

START 26.9600 MHz

#RES BW 3.0 kHz

#VBW 3 kHz

STOP 27.2800 MHz

#SWP 150 msec