

Report No.: 0302803
Model No.: U/A

Pursuant to FCC Part 15 Section 15.227 Emissions Requirement

hp

MKR 134.4 KHz

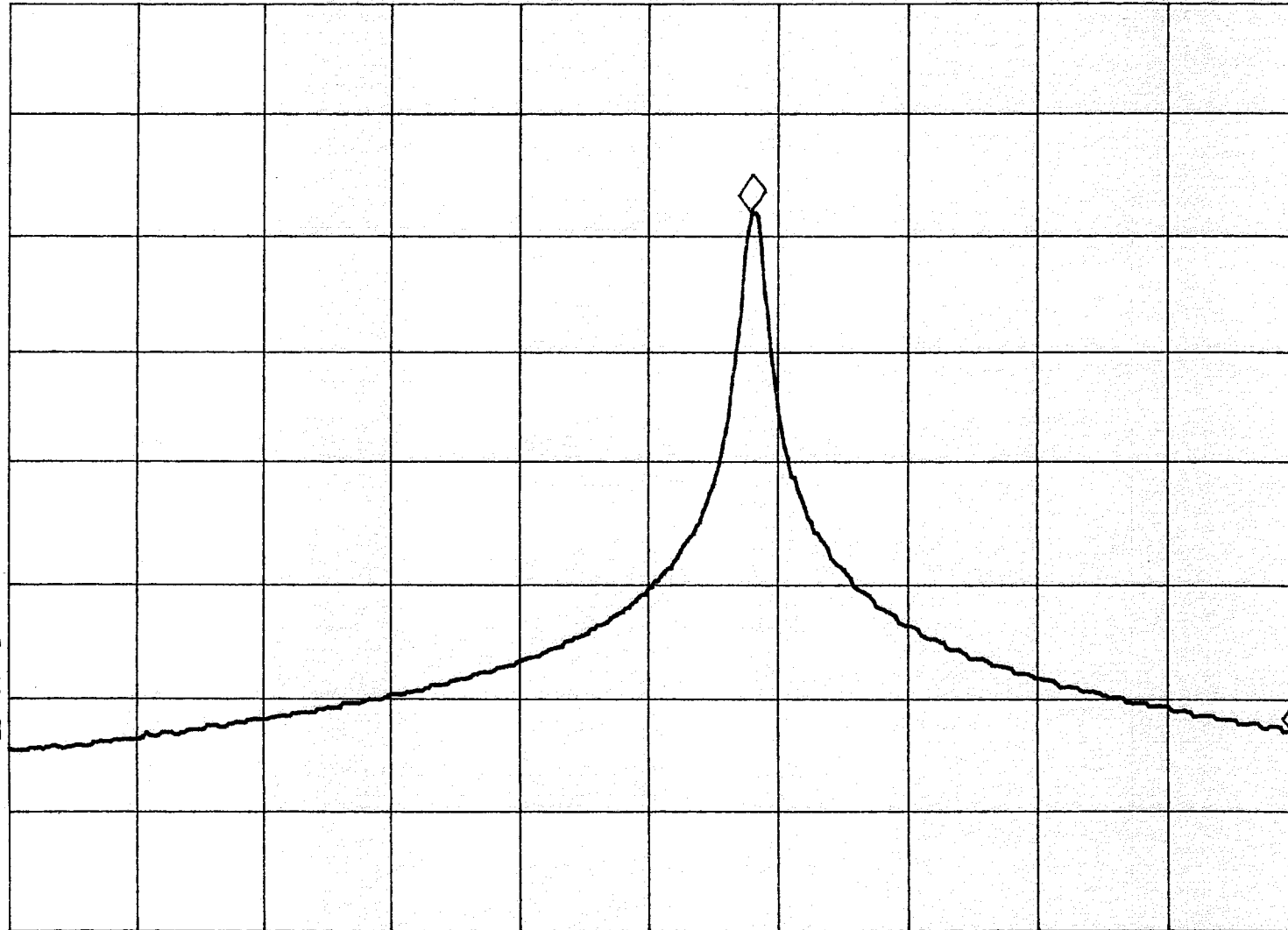
REF 97.0 dB μ V

AT 10 dB

-45.05 dB

PEAK
LOG
10
dB/

VA SB
SC FC
CORR



Tested By: *[Signature]*
(Craig Li)

Date: 7-3-03

Checked By: *[Signature]*
(Anthony Ann)

Date: 10/3/03

Test Result: Pass / Fail / NA

START 26.9600 MHz

STOP 27.2800 MHz

#RES BW 3.0 KHz

VBW 3 KHz

#SWP 1.00 sec