

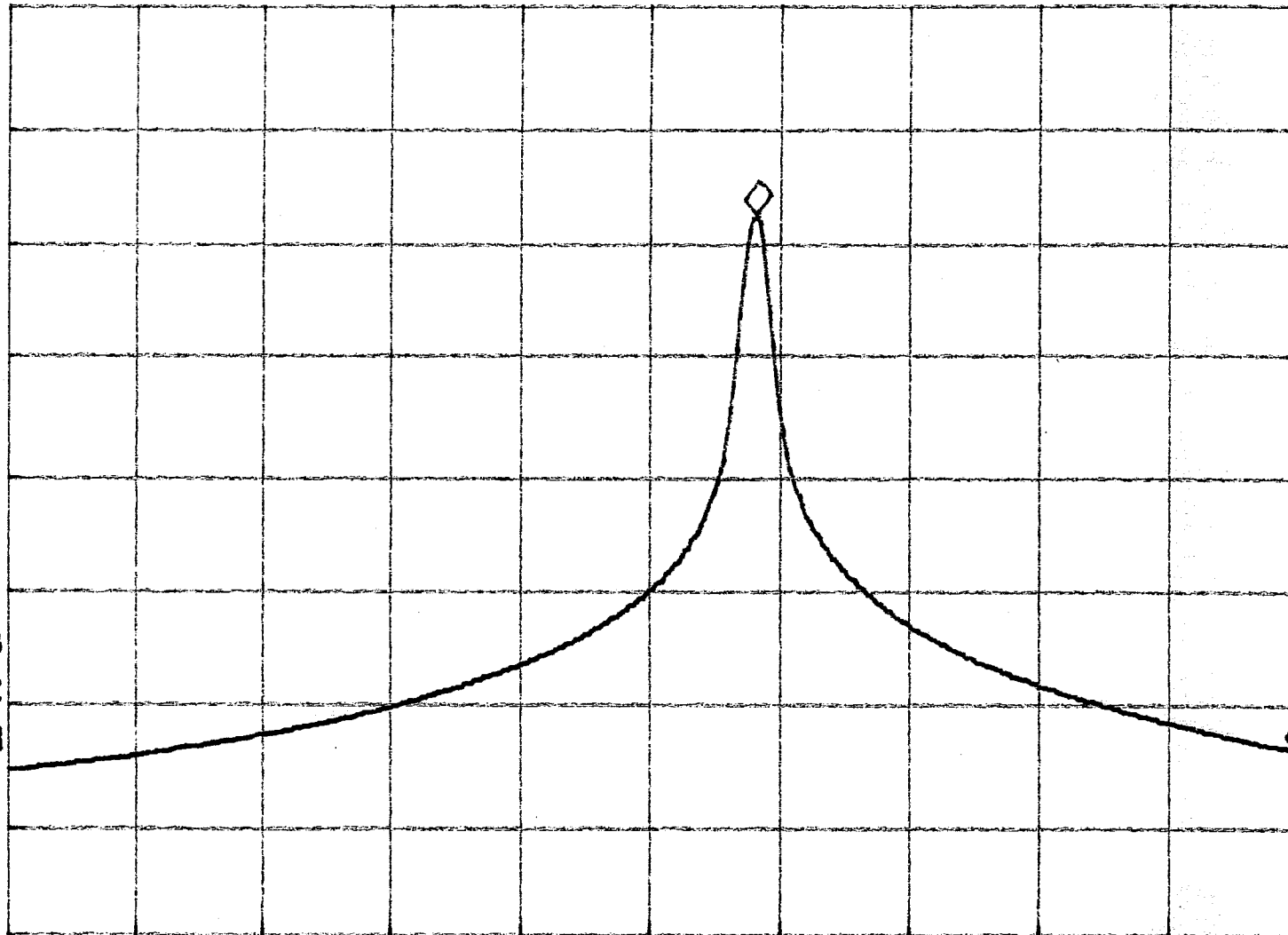
Report No.: 0300007
Model No.: 81741-5

Pursuant to FCC Part 15 Section 15.227 Emissions Requirement

REF 107.0 dB μ V AT 10 dB MKR 133.6 KHz
-46.56 dB

PEAK
LOG
10
dB/

VA SB
SC FC
CORR



START 26.9600 MHz STOP 27.2800 MHz
#RES BW 3.0 KHz VBW 3 KHz #SWP 1.00 sec

Tested By: *[Signature]*
(Gary Li)

Date: 81-03

Checked By: *[Signature]*
(Anthony Chow)

Date: 9/1/2003

Test Result: Pass / Fail / NA