

Report No.: 0211515
Model No.: 82132

Pursuant to FCC Part 15 Section 15.227 Emissions Requirement

hp

MKA 134.4 KHz

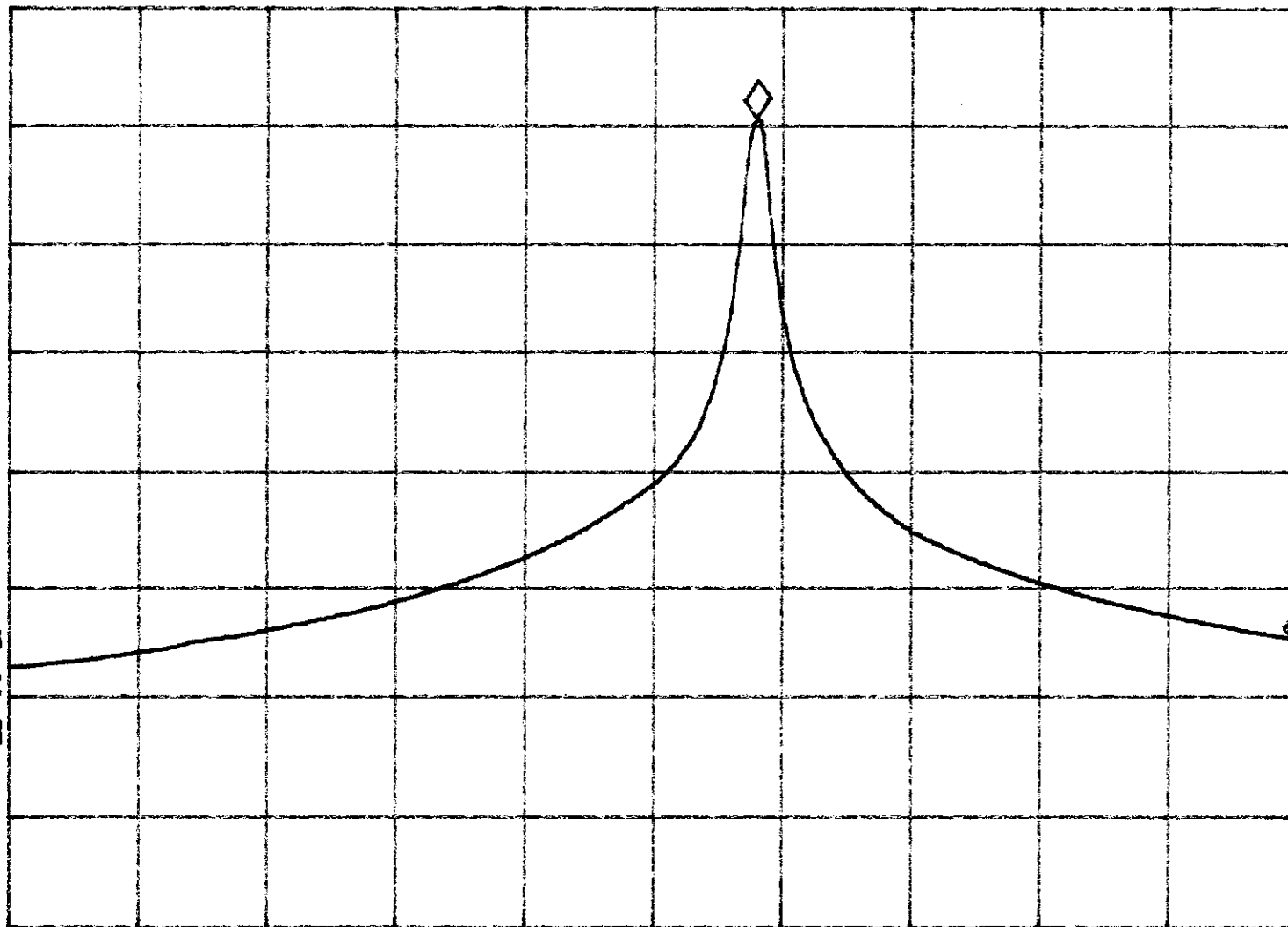
REF 117.0 dBμV

AT 20 dB

-45.76 dB

PEAK
LOG
10
dB/

VA SB
SC FC
CORR



Tested By:

[Signature]
Gary Li

Date: 10-8-02

Checked By:

[Signature]
Anthony Chan

Date: 13-8-2002

Test Result: Pass / Fail / NA

START 26.9600 MHz

#RES BW 3.0 KHz

VBW 3 KHz

STOP 27.2800 MHz

#SWP 1.00 sec