

1/2

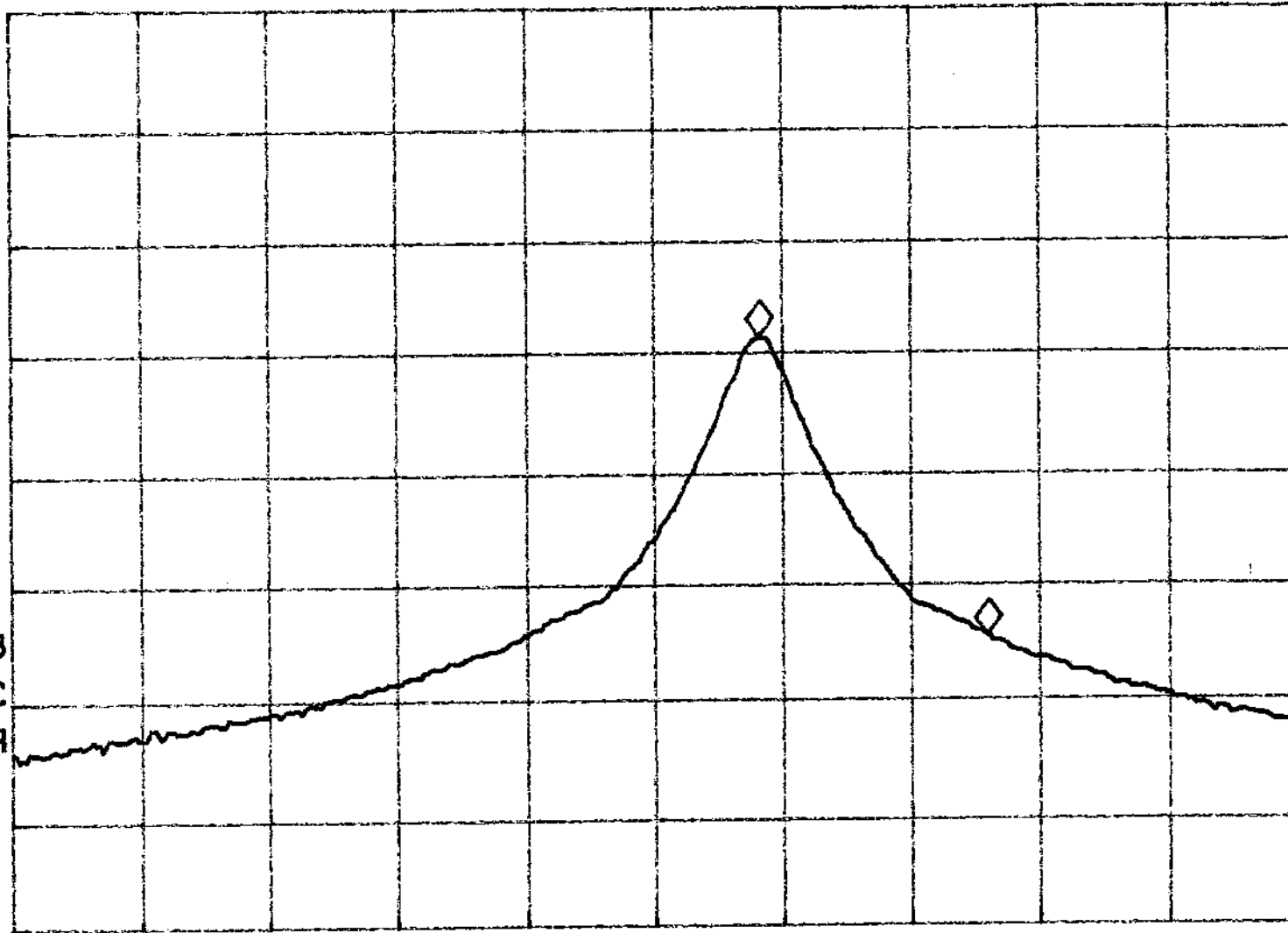
REF 135.0 dB μ V

AT 40 dB

MKR 56.8 KHz

-26.04 dB

PEAK
LOG
10
dB/



VA SB
SC FC
CORR

START 26.9600 MHz

#RES BW 10 KHz

STOP 27.2800 MHz

#VBW 100 KHz

#SWP 1.00 sec