

hp

REF 107.0 dBμV

AT 10 dB

MKR 12.0 kHz

-26.36 dB

PEAK

LOG

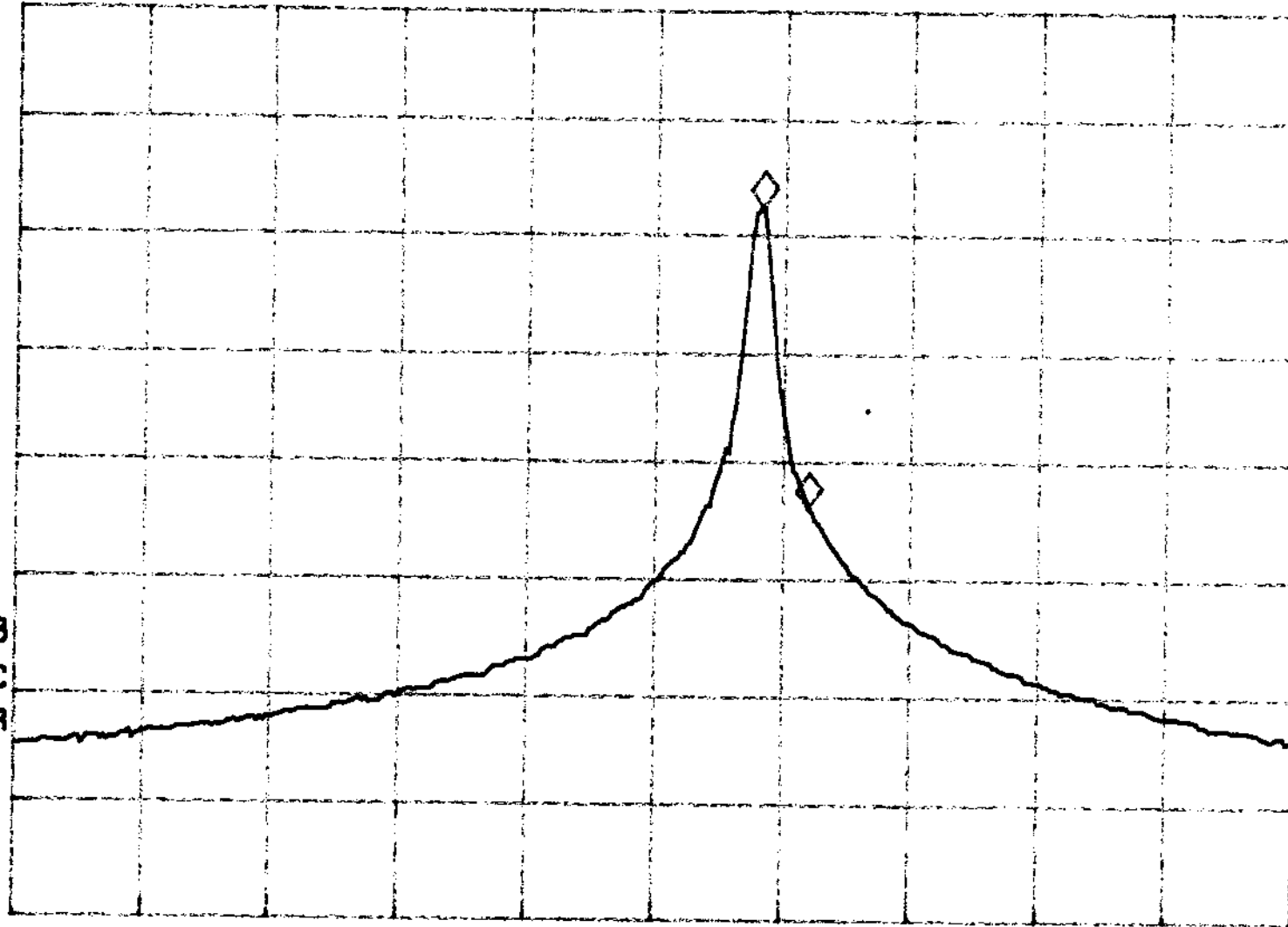
10

dB/

VA SB

SC FC

CORR



START 26.9600 MHz

#RES BW 3.0 kHz

#VBW 3 kHz

STOP 27.2800 MHz

#SWP 750 msec