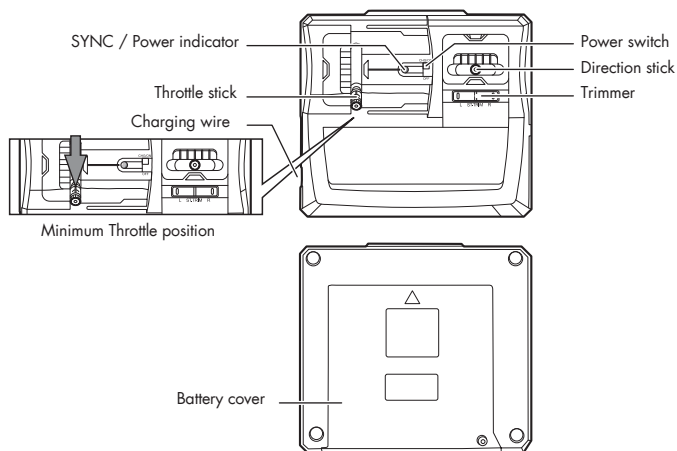


Transmitter



PLAYGROUND AND WEATHER SELECTION

- a) It's better in a sunny day, and in calm wind or slight breeze (Esp. no more than Beaufort scale 1 - light air [smoke can float but leaf can't move]).
Precaution: Because of its light weight, it may be blown away under strong wind.
- b) We suggest you can play it on grass to protect your plane when it impacts on ground.
- c) Do not play your plane when it is raining, snowing, or near high power cable.

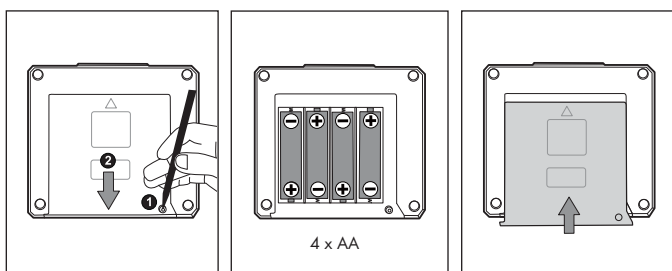


PROCEDURE FOR PAIR / SYNC THE PLANE AND TRANSMITTER

- 2.4 GHz technology allows for many plane to fly without signal interference. A connection, or pairing, must be made between the plane and the transmitter to function. Sometimes, the pairing will happen automatically. If it does not, or if the connection is lost then follow these steps to sync the plane and the transmitter.
1. Make sure the throttle stick is at the minimum position.
 2. Turn the Power Switch button to 'ON' position on the plane, Red LED will then glow. Then turn on the Transmitter.
 3. The Synchronize/Pairing procedure is automatically COMPLETED when you can see the Red LED light up solid (not blinking) on both plane and Transmitter.

BATTERY INSTALLATION & CHARGING

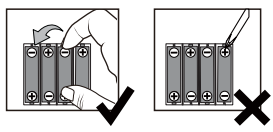
Transmitter Battery Installation (*Make sure the power switch is on "OFF" position.)



Warning!

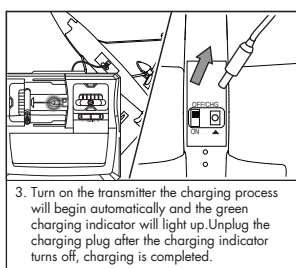
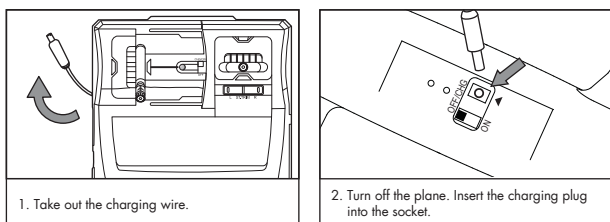
Remove these batteries from the unit by pulling up on one end of each battery positive by hand.

DO NOT remove or install batteries using sharp or metal tools.



Note:
When the power indicator on the transmitter starts blinking, replace the batteries.

Plane battery charging

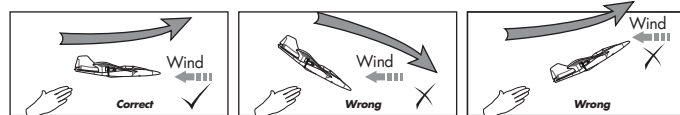


Note:

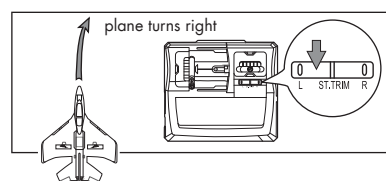
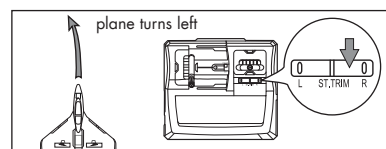
1. The plane can operate for about 5 minutes per every 25 - 40 minutes charging.
2. Before recharging the battery, wait 10 - 15 minutes for it to cool down.

FLYING INSTRUCTIONS

1. Firstly finished pairing transmitter and plane.
2. Point the plane toward the wind blowing direction and throw it out horizontally. Immediately afterwards, push the throttle stick up to the full speed.



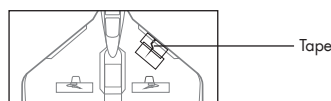
3. Trimming the plane :
If the plane turns left involuntarily, press the right side of the yaw trimmer ("R") repeatedly until the plane flies straight. Likewise, if the plane turns right involuntarily, press the left side of the yaw trimmer ("L") repeatedly.



4. Push the direction stick toward left to turn the plane anticlockwise, and push the direction stick toward right to turn it clockwise. The plane turns depending on the speed difference between the left propellers and the right propellers.
5. Push the throttle stick up to increase the flying speed and push the throttle stick down to decrease the speed.

Throttle control	Yaw control	Movement
		↑ Take off or ascending
		↓ Landing or descending
Maintaining height		↶ Turn left
Maintaining height		↷ Turn right

6. Pull the throttle stick down slowly to stop the propellers and land the plane.
7. If the plane has been spoiled a little, you can fix it with adhesive tape.



DELIVERY CONTENTS

Plane
Transmitter
Transparent label
Spare propeller set
Tool for Rotor Replacement
Instruction Manual

PRECAUTIONS, WARNINGS AND STATEMENTS



The symbol showing a crossed-out rubbish bin indicates that ordinary batteries, rechargeable batteries, button batteries, battery packs etc. should not be disposed of with household waste. Batteries are dangerous for health and the environment. Help to protect the environment against health risks. Ask your child to dispose of batteries cleanly by taking them to your local collection points. In this way, batteries can be recycled safely.



WEEE

When this appliance is out of use, please remove all batteries and dispose of them separately. Bring electrical appliances to the local collecting points for waste electrical and electronic equipment. Other components can be disposed of in domestic refuse.

SAFETY PRECAUTIONS:

- Warning: Changes or modifications to this unit not expressly approved by the party responsible for compliance could void the user's authority to operate the equipment.
- Warning! Do not touch the running propellers. Keep hands, hair and loose clothes away from moving parts to avoid injury.
 - Remote controlled plane piloting requires specific skills and should be learned under direct supervision of an experienced adult.
 - Caution. Do not start up and fly when persons, animals or any obstructions are within the flying range of the Plane.
 - For safe use, the room where the toy is used must be sufficiently large.
 - Caution. Risk of eye injuries. Do not fly near your face to avoid injuries.
 - Keep your plane in your sight so that you can supervise it all the time.
 - Turn off transmitter and the Plane when not in use.
 - You are advised to replace with new batteries as soon as the function becomes impaired.
 - Instruction sheet and packaging must be retained since it contains important information.
 - Users should keep strict accordance with the instruction manual while operation the product.
 - Transmitter charger is tailor-made for the Li-Poly rechargeable battery used in plane. Do not use it to charge any battery other than that in the plane.

Hereby, Silverlit Toys Manufactory Ltd declares that the radio equipment 85737/85738 is in compliance with Directive 2014/53/EU. The full text of the EU declaration of conformity is available at the following internet address: www.silverlit.com/a/certificate

Warning: not suitable for children under 8 years of age.

FCC STATEMENTS

This device complies with part 15 of the FCC rules. Operation is subject to the following two conditions:

- 1) This device may not cause harmful interference, and
- 2) This device must accept any interference received, including interference that may cause undesired operation.

NOTE: This equipment has been tested and found to comply with the limits for a Class B digital device, pursuant to Part 15 of the FCC rules. These limits are designed to provide reasonable protection against harmful interference in a residential installation. This equipment generates, uses and can radiate radio frequency energy and, if not installed and used in accordance with the instructions, may cause harmful interference to radio communications. However, there is no guarantee that interference will not occur in a particular installation. If this equipment does cause harmful interference to radio or television reception, which can be determined by turning the equipment off and on, the user is encouraged to try to correct the interference by one or more of the following measures:

- Reorient or relocate the receiving antenna.
- Increase the separation between the equipment and receiver.
- Connect the equipment into an outlet on a circuit different from that to which the receiver is connected.
- Consult the dealer or an experienced radio/TV technician for help.

BATTERY WARNINGS

- Non-rechargeable batteries are not to be recharged.
- Rechargeable batteries are to be removed before being charged. (Transmitter only)
- Rechargeable batteries should be charged under adult supervision.
- Different types of batteries or new and used batteries are not to be mixed. (Transmitter only)
- Only batteries of the same or equivalent type as recommended are to be used.
- Batteries are to be inserted with correct polarity. (+ and -)
- Exhausted batteries are to be removed from the toy. (Transmitter only)
- The supply terminals are not to be short-circuited.
- Do not mix old and new batteries. (Transmitter only)
- Do not mix alkaline batteries, standard batteries (carbon-zinc) and rechargeable batteries (nickel-cadmium). (Transmitter only)

CARE AND MAINTENANCE

- Always remove batteries from the toy when it is not being used for a long period of time. (Transmitter only)
- Wipe the toy gently with a clean cloth.
- Keep the toy away from direct heat.
- Do not submerge the toy into water that can damage the electronic assemblies.

Special notes to adults:

- Caution. Read the manual carefully before first use.
- Assembly should be performed under adult supervision (changing batteries/ spare parts, trimming etc.).
- Parental guidance is recommended when installing or replacing batteries.
- This toy intended to be used in domestic area (house and garden) only.
- Do not change or modify anything on the plane.

Notes:

- The toy may malfunction under electrostatic discharge interference. If the toy does not respond, reset it.
- Use new alkaline batteries in this toy to obtain best performance.
- This toy must only be used with the recommended charger.
- The wires are not to be inserted into socket-outlets.

This toy is equipped with a LiPo rechargeable battery, please pay attention to the following cautions for safety use:

- Do not dispose the battery in fire or heat.
- Do not use or leave the battery near a heat source such as fire or heater.
- Do not strike or throw the battery against hard surface.
- Do not immerse the battery in water, and keep the battery in a cool dry environment.
- When recharging, only use the battery charger specifically for that purpose.
- Do not over-discharge the battery.
- Do not connect the battery to an electrical outlet.
- Do not directly solder the battery and pierce the battery with a nail or other sharp object.
- Do not transport or store the battery together with metal objects such as necklaces, hairpins etc.
- Do not disassemble or alter the battery.
- Charge the battery every 6 months.
- This toy (Plane) contains battery that is non-replaceable.

Frequency Band Range: 2.400 - 2.483GHz
Maximum Radio-Frequency Power: <10mW



Battery requirement for the Plane:

Power Supply : —
Rating : DC 3,7 V ; 5,6 W
Batteries : 1 x 3,7 V LiPo Rechargeable Battery Pack (included)
Capacity : 130 mAh

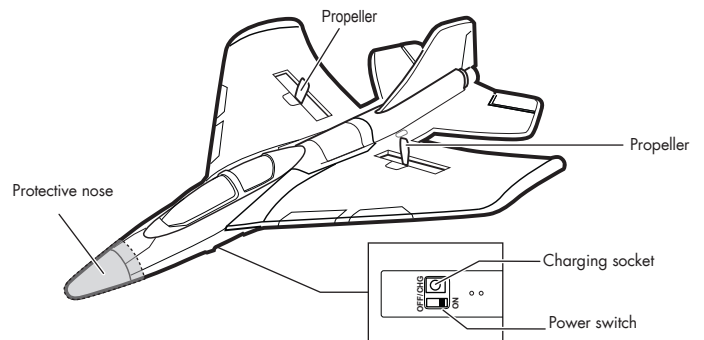
Battery requirement for Transmitter:

Power Supply : —
Rating : DC 6,0 V ; 0,3 W
Batteries : 4 x 1,5 V "AA"/LR6/AM3 (not included)



PART IDENTIFICATION

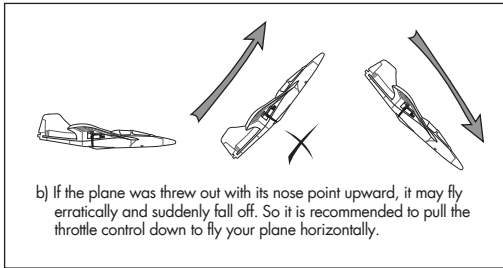
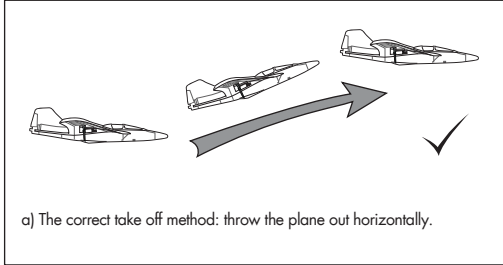
Plane



NOTE: DO NOT remove the protective nose.

FLYING TIPS

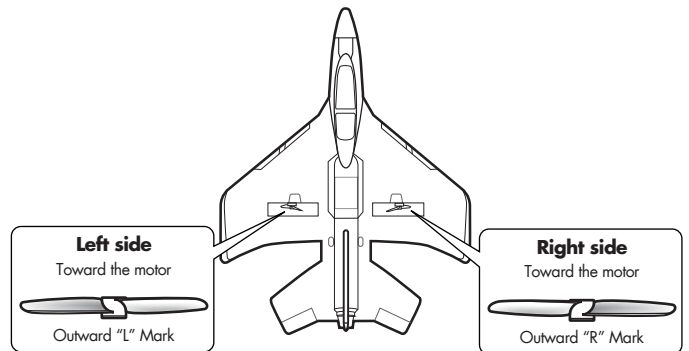
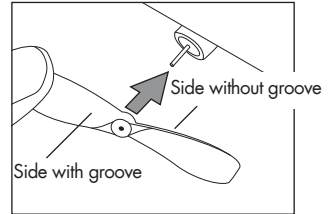
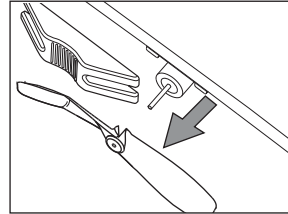
Take off by throwing



Tips: Always pointing your plane with the nose facing to the wind.

REPLACEMENT OF PROPELLER

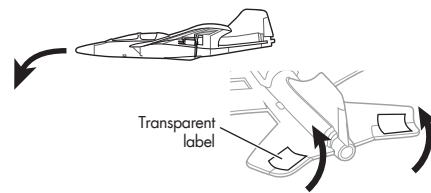
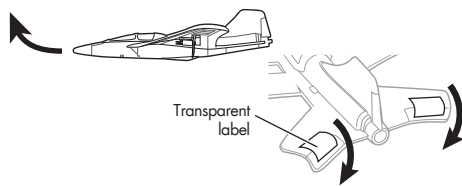
1. Take out the broken or spoiled propeller as photo shown.
2. Check the direction of propeller before replacing a new one.



TROUBLESHOOTING

Symptom	Diagnosis	Solution
Propeller does not move.	<ul style="list-style-type: none"> • On/Off switch is at "OFF" position. • Weak battery power. • PAIRING / SYNC Procedure is not yet completed or done. 	<ul style="list-style-type: none"> • Set the switch to "ON" • Recharge/ replace the batteries. • Reset by switch off both plane and transmitter then switch both on again.
The power indicator on transmitter is blinking.	<ul style="list-style-type: none"> • Weak transmitter battery power. 	<ul style="list-style-type: none"> • Replace the transmitter batteries with new ones.
Failed to take off or sudden drop during flight.	<ul style="list-style-type: none"> • Plane does not run toward the wind direction. • Weak battery power. 	<ul style="list-style-type: none"> • Direct the plane towards the wind direction before take off. • Recharge the plane battery.
The plane is out of control.	<ul style="list-style-type: none"> • Other radio control device occupies the same frequency near your area of operation. • Out of the control range. • High frequency interference emitted from high-voltage lines, transformers and other buildings. 	<ul style="list-style-type: none"> • Move to another location to operate the plane. • The transmission range is up to 50 meters in open space. • Avoid operating the plane in the presence of high-voltage lines or transformers.

The plane may be abnormal after crashes, improper storage... etc. you can follow the following procedure to get the better flight.



KEEP THIS INSTRUCTION MANUAL AS IT CONTAINS IMPORTANT INFORMATION FOR FUTURE REFERENCE.

Due to continuous product improvements, the picture on the manual may differ slightly from the actual product.

© 2021 MerchSource, LLC. Irvine, CA 92618. All rights reserved.

Model NO.: 1015321

FOR TECHNICAL SUPPORT, PLEASE CALL

1-800-374-2744