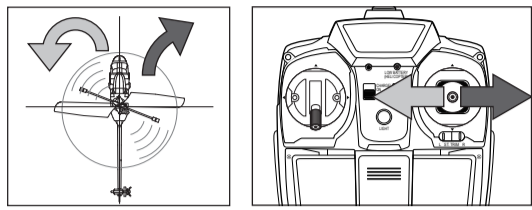


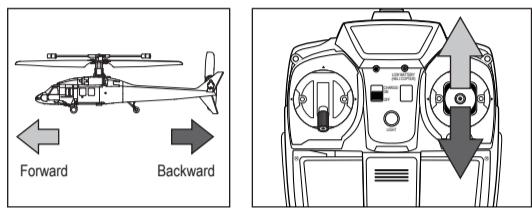
**Hover up and down:**

When the helicopter flies steadily, slowly push the throttle stick up to make helicopter fly higher, or lower the stick a bit to make helicopter fly lower. Only small amounts of stick position change are required for smooth flying.



**Turn left and right:**

Maintain the helicopter at a certain height. Push the direction stick toward left to turn the helicopter anticlockwise, and push the direction stick toward right to turn it clockwise.



**Forward and backward flight:**

Maintain the helicopter at a certain height. Push the direction stick upward to fly the helicopter forward. Push it downward to fly the helicopter backward.

**5. Helicopter headlight**

- Press the headlight button once to switch the LED headlight on. Press the button again to switch the LED off.

**Note:** The red LED light on the helicopter will flash very slowly if the helicopter is out of control range. When it happened, please restart of both helicopter and transmitter.

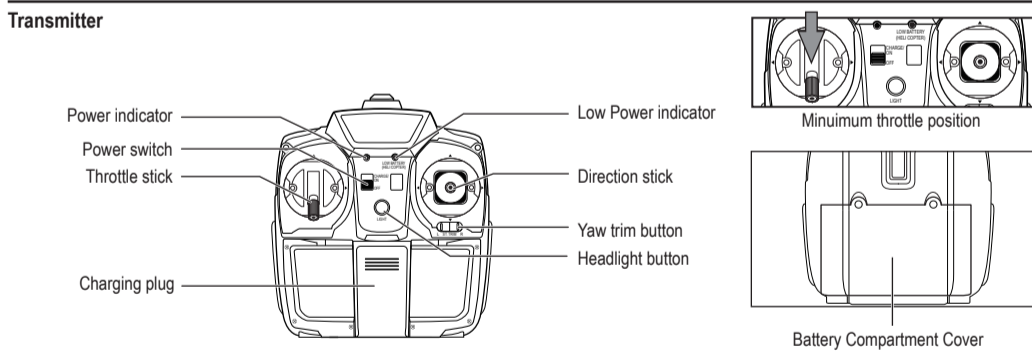
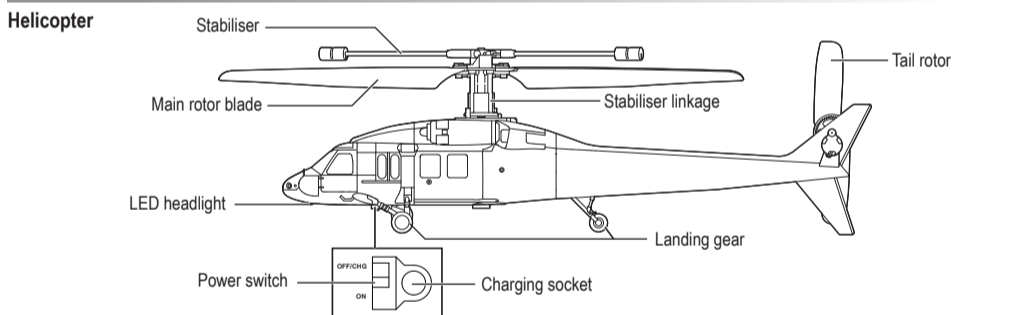
**Troubleshooting**

Symptom	Cause	Correction
The helicopter does not respond.	- The helicopter and/ or the transmitter is switch off ("OFF"). - The battery of the helicopter is weak.	- Set the power switch to "ON" - Recharge the battery of the helicopter.
The helicopter does not react, or react poorly to operation by transmitter.	- PAIRING / SYNC Procedure is not yet completed or done.	- Reset by switch off both helicopter and transmitter then switch both on again.
Loss of control.	- Out of the control range of distance. - Tail rotor blade is deformed or distorted.	- Ensure the antenna is fully extended. The transmission range is up to 50 meters in open space. - Replace the tail rotor blade with the spare one provided.

Become our fan on facebook  
facebook.com/SilverlitToys

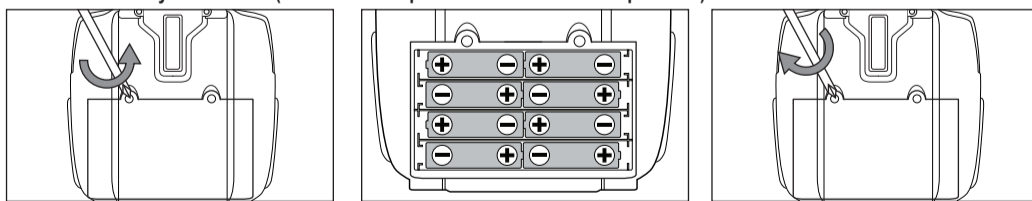
Visit us at  
www.Silverlit.com

**Part Identification**



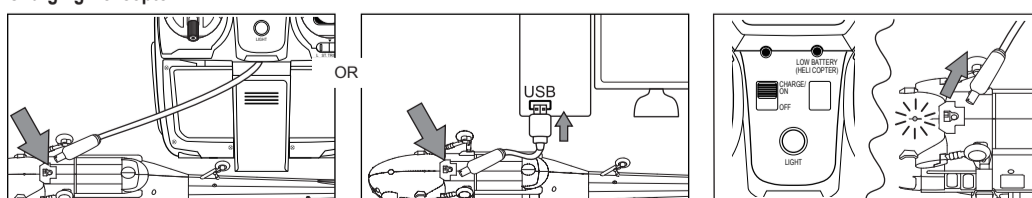
**Battery Installation & Charging**

**Transmitter Battery Installation (\*Make sure the power switch is on "OFF" position.)**



**Note:** The transmitter receives a signal from the helicopter when the battery is low. When the Low Power indicator on the transmitter starts blinking, recharge the helicopter.

**Charging Helicopter**



**Note:** 1. The helicopter can operate for about 4 - 5 minutes per every 40 - 60 minutes charging.  
2. Before recharging the battery, wait 10 - 15 minutes for it to cool down.



**Delivery contents**



**Precautions, Warnings & Statements**

**Waste Electrical and Electronic Equipment (WEEE)**  
When this appliance is out of use, please remove all batteries and dispose of them separately. Bring electrical appliances to the local collecting points for waste electrical and electronic equipment. Other components can be disposed of in domestic refuse.

**FCC Statements**  
This device complies with part 15 of the FCC rules. Operation is subject to the following two conditions:  
1) This device may not cause harmful interference, and  
2) This device must accept any interference received, including interference that may cause undesired operation.  
NOTE: This equipment has been tested and found to comply with the limits for a Class B digital device, pursuant to Part 15 of the FCC Rules. These limits are designed to provide reasonable protection against harmful interference in a residential installation. If this equipment does cause harmful interference to radio or television reception, which can be determined by turning the equipment off and on, the user is encouraged to:  
- Reorient or relocate the receiving antenna.  
- Increase the separation between the equipment and receiver.  
- Connect the equipment into an outlet on a circuit different from that to which the receiver is connected.  
- Consult the dealer or an experienced radio/TV technician for help.

**Safety precautions:**  
**Warning:** Conversion or modifications to this product not expressly approved by the party responsible for compliance could void the user's authority to operate the product.  
- The transmitter-charger is tailor-made for the LiPo rechargeable battery used in helicopter. Do not use it to charge any battery other than that in the helicopter.

**Special notes:**  
- Please read the operation instructions carefully prior to the first use.

**Waste Electrical and Electronic Equipment (WEEE)**  
When this appliance is out of use, please remove all batteries and dispose of them separately. Bring electrical appliances to the local collecting points for waste electrical and electronic equipment. Other components can be disposed of in domestic refuse.

**Tip! Safety hints**

- Never take apart or attempt to modify the product. This could damage the product.
- Helicopter piloting requires specific skills and should be learned under direct supervision of an experienced adult.
- Never operate this product if it has damaged parts.
- Attention! Do not fly the helicopter near persons and animals.
- Do not fly the helicopter in the vicinity of water and power lines.
- Always keep your eyes on the helicopter and prevent it from landing or crashing near your head, your body, or on other people.
- Stand during operation in order to get out of the way of the helicopter quickly if necessary.
- Always switch the helicopter and the transmitter off when not operating.
- Warning! Do not touch the running rotors. Keep hands, hair and loose clothes away from moving parts to avoid injury.
- Never hold or throw any objects into the running rotors.
- Attention! Risk of eye injuries! Keep a safety distance of at least 1 metre.
- Keep this instruction manual for future reference.

**Notes:**

- Under the environment with electrostatic discharge, the product may malfunction and require user to reset the product.
- New alkaline batteries are recommended to use in this product to obtain best and maximum performance.
- This product must only be used with the recommended charger.

**Battery requirement for Transmitter:**

- Power Supply : DC 12 V , 3.84 W
- Rating : DC 12 V , 3.84 W
- Batteries : 8 x 1.5 V \*AA/LR6/AM3 (not included)

**Battery requirement for Helicopter:**

- Power Supply : DC 3.7 V , 9.45 W
- Rating : DC 3.7 V , 9.45 W
- Batteries : 1 x 3.7 V LiPo Reelw Powerable Battery Pack (included)
- Capacity : 300 mAh

**This helicopter is equipped with a LiPo rechargeable battery, please pay attention to the following cautions for safety use:**

- Do not dispose the battery in fire or heat.
- Do not use or leave the battery near a heat source such as fire or heater.
- Do not strike or throw the battery against hard surface.
- Do not immerse the battery in water, and keep the battery in a cool dry environment.
- When recharging, only use the battery charger specifically for that purpose.
- Do not over-discharge the battery.
- Do not connect the battery to an electrical outlet.
- Do not directly solder the battery and pierce the battery with a nail or other sharp object.
- Do not disassemble or alter the battery.
- Charge the battery every 6 months.
- Do not transport or store the battery together with metal objects such as necklaces, hairpins etc.
- As for a used battery, please recycle after covering the battery terminals with insulation tape or inserting it to an individual poly-bag.

**silverlit** Silverlit SAS, Espace Green Parc, Route de Villepeclé, 91280 Saint Pierre du Perray / France.  
©2012 Silverlit. All rights reserved.

**Flying Your Helicopter**

**Tip! Piloting hints**

- For controlling the sticks on transmitter, try not to push the sticks immediately any extreme positions. It should be like steering a bicycle rather than pressing computer game sticks.
- For the novice pilot (after the trimming procedure is completed), it is highly recommended to focus exclusively on learning to control the throttle stick first. If the helicopter turns around by itself there is no need to keep it straight. For the first flight, it is important to learn to keep the helicopter at a constant altitude of around 1 meter with very gentle inputs on the throttle stick. Once the pilot masters this, he may start learning to take control with the direction stick.

**Tip! Operation hints**

- If the helicopter is crashed, switched off the helicopter and the transmitter. Examine the helicopter and ensure it has no damage before switching them on again.
- Don't operate the helicopter under the direct bright light it will affect the control system of your helicopter.
- Don't cover the IR diodes of the transmitter as it will block the IR signal.
- Don't stick any other label onto the helicopter as it will affect receiving of IR signal.

**Procedure for PAIR / SYNC the Helicopter and Transmitter**

2.4 GHz technology allows for many helicopters to run without signal interference. A connection, or pairing, must be made between the helicopter and the transmitter to function. Sometimes, the pairing will happen automatically. If it does not, or if the connection is lost then follow these steps to sync the helicopter and the transmitter.

1. Place the helicopter on the ground with the tail point towards you and the nose pointing away. Make sure the throttle stick is at the minimum position.
2. Turn the Power Switch button to 'ON' position both on the Helicopter and Transmitter, Red LED will then flash.
3. The Synchronize/Pairing procedure is automatically COMPLETED when you can see the Red LED light up solid (not blinking) on both Helicopter and Transmitter.

**1. Flight Environment:**

Playing environment and weather condition:  
a) Indoors: in calm air. Avoid flying the helicopter near air circulation, air-conditioner and furnishings.  
b) Outdoors: on a sunny day with calm air or slight breeze. Never fly the helicopter on a windy day.  
c) It is recommended to fly the helicopter over a soft surface, e.g. grass field.  
d) Do not fly the helicopter when it is raining, snowing or near high power cables.

**2. Trimming the helicopter:**

- Gently push the throttle up to raise your helicopter about 0.5 to 1 meter high.

**Spiral clockwise**

- When the helicopter spirals (fig. 1) or keeps turning clockwise (fig. 2), press the left side of the yaw trim button ("L") repeatedly until the helicopter flies straight (fig. 3).

**Spiral anticlockwise**

- When the helicopter spirals (fig. 4) or keeps turning anticlockwise (fig. 5), press the right side of the yaw trim button ("R") repeatedly until the helicopter flies straight (fig. 6).

**Keep turning clockwise**

**Keep turning anticlockwise**

**3. Lift-off procedures (after trimming procedure):**

- Put the helicopter on a smooth surface. Uneven floor surface will affect its lifting off.
- Slowly increase the throttle.
- Do not look at the transmitter but focus on the helicopter.
- As soon as the helicopter leaves ground, reduce the throttle slightly. (In the worst case, helicopter will go back to the floor but that is better than crashing against the ceiling.)
- Very gently add the throttle if the helicopter descends.
- Very gently reduce the throttle if the helicopter ascends.
- For turning, give short and small inputs to the direction stick. (Most beginners will easily overcontrol the helicopter.)

