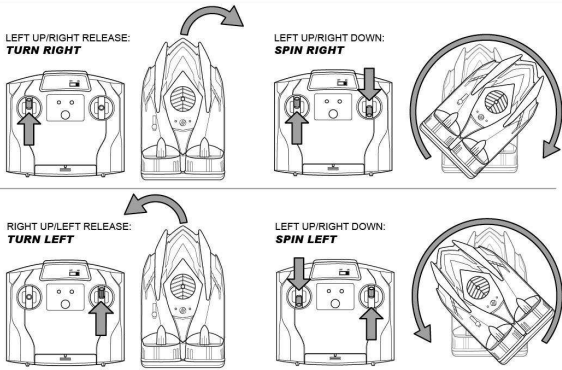


### 3. Operation



#### Driving Tips:

- The acceleration, turning speed and radius may vary at different speed and turning angle.
- DRIVE ON LAND - Drive on flat, smooth (but not slippery) surfaces. Driving on rough or broken ground, loose sand, rocks or anything that might damage the air bag skirt.
- DRIVE ON WATER - Drive on calm, smooth fresh water.
- Try to fully charge the battery pack before water operation.

#### How to fix the air bag skirt

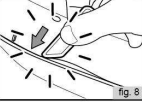
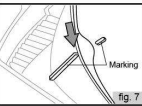
- The air bag skirt might have chance to be detached from the toy.
- Align both marking on the bag skirt and toy. And then press the edge of skirt into slot with SKIRT INSERTION TOOL. (fig. 7 and 8)

#### Important

- Avoid to drive the Hover Racer in salty water.
- Skirt insertion tool is stored under transmitter charging door. Do not use sharp object to touch the air bag skirt.
- Air bag skirt may stain some surfaces. Do not set vehicle on furniture or any surface that may be damaged.

#### Troubleshooting

Symptom	Cause	Correction
Hover Racer does not respond.	- The Hover Racer and/ or the transmitter is switched off ("OFF"). - The battery of the vehicle is weak.	- Set the power switch to "ON" - Recharge the battery of the vehicle.
Hover Racer does not react, or reacts poorly to operation by transmitter.	- PAIRING / SYNC Procedure is not yet completed or done. - Weak power of transmitter.	- Reset by switch off both Hover Racer and transmitter then switch both on again. - Change new battery in transmitter.
Loss of control.	- Out of the distance of the control range.	- The transmission range is up to 20 meters in open space.



This product is in compliance with the essential requirements and other relevant provisions of Directive 1999/5/EC.

Instruction Manual  
For ages 5+  
Ab 5 Jahre  
A partir de 5 ans  
Leeftijd vanaf 5 jaar  
A partir de 5 años  
Dal 5 anni in su

#### Delivery Contents

- Hover Racer
- Skirt insertion tool
- Transmitter
- Instruction manual

#### FCC Statements

This device complies with part 15 of the FCC rules. Operation is subject to the following two conditions:  
1) This device may not cause harmful interference, and  
2) This device must accept any interference received, including interference that may cause undesired operation.  
**NOTE:** This equipment has been tested and found to comply with the limits for a Class B digital device, pursuant to Part 15 of the FCC Rules. These limits are designed to provide reasonable protection against harmful interference in a residential installation. This equipment generates, uses and can radiate radio frequency energy and, if not installed and used in accordance with the instructions, may cause harmful interference to radio communications.  
However, there is no guarantee that interference will not occur in a particular installation. If this equipment does cause harmful interference to radio or television reception, which can be determined by turning the equipment off and on, the user is encouraged to try to correct the interference by one or more of the following measures:  
- Reorient or relocate the receiving antenna.  
- Increase the separation between the equipment and receiver.  
- Connect the equipment into an outlet on a circuit different from that to which the receiver is connected.  
- Consult the dealer or an experienced radio/TV technician for help.

#### Safety Precautions

- Parents, this toy is recommended for children. To ensure that your child's play is both safe and fun, please review the operating instructions with your children.
- **DO NOT** pick up moving vehicle. **TRUN OFF** vehicle before packing up.
- Keep hands, hair and loose clothing away from the propellers when power switch is turned **ON**.
- Remove battery from the toy and remote when not in use.
- **DO NOT** operate your vehicle on street. Avoid hitting people, pets or home furnishings.
- Warning: Changes or modifications to this unit not expressly approved by the party responsible for compliance could void the user's authority to operate the equipment.
- The crossed-out waste symbol indicates that batteries, rechargeable batteries, button cells, battery packs, etc. must not be put in the household waste. Batteries are harmful to health and the environment. Please help to protect the environment from health risks: tell your children to dispose of batteries properly by taking them to the local collecting points. This way batteries are recycled safely.
- **Waste Electrical and Electronic Equipment (WEEE)**  
When this appliance is out of use, please remove all batteries and dispose of them separately. Bring electrical appliances to the local collecting points for waste electrical and electronic equipment. Other components can be disposed of in domestic refuse.

#### Cautions:

- Non-rechargeable batteries are not to be recharged.
- Rechargeable batteries are to be removed from the toy before being charged. (Transmitter only)
- Rechargeable battery are only to be charged by an adult.
- Different types of batteries or new and used batteries are not to be mixed. (Transmitter only)
- Only batteries of the same or equivalent type as recommended are to be used.
- Batteries are to be inserted with correct polarity.
- Exhausted batteries are to be removed from the toy. (Transmitter only)
- The supply terminals are not to be short-circuited.
- Do not mix old and new batteries. (Transmitter only)
- Do not mix alkaline, standard (carbon-zinc) or rechargeable (nickel-cadmium) batteries. (Transmitter only)
- The battery for motorboat is non-replaceable.

#### Care and Maintenance:

- Always remove batteries from the toy when it is not being used for a long period of time.
- Wipe the toy gently with a clean damp cloth.
- Keep the toy away from direct sunlight and/or direct heat.
- Do not submerge the toy into water that can damage the electronic assemblies.

#### Notes:

- Parental guidance is recommended when installing or replacing batteries.
- Users should keep and retain this information for future reference.
- User should keep in strict accordance with the instruction manual while operating the toy.
- In case of electrostatic discharge, the product may malfunction and require user to reset the product.

#### Battery requirement for Transmitter:

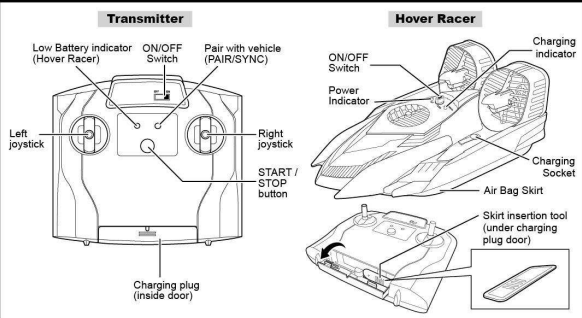
- Power Supply: 6 x 1.5 V AA/LR6 (AM3 not included)
- Rating: DC 9 V, 4.5 W
- Batteries: 6 x 1.5 V AA/LR6 (AM3 not included)

#### Battery requirement for Vehicle:

- Power Supply: DC 3.7 V, 10W
- Batteries: 1 x 3.7 V LiPo Rechargeable Battery Pack (included)
- Capacity: 250 mAh

Silverlit® Silverlit SAS, Espace Green Parc, Route de Villepelle, 91280 Saint Pierre du Perray / France.  
© 2013 Silverlit. All rights reserved.

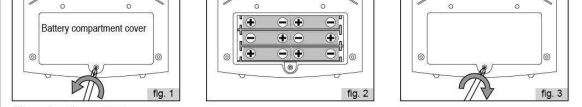
### 1. Part Identification



### 2. Battery Installation and Charging

#### Transmitter battery installation

- Switch off the transmitter
- Open the battery compartment by loosening the screw (fig. 1).
- Put 6 Type AA battery in the battery compartment as per the polarity shown inside (fig. 2).
- Place back the battery compartment cover (fig. 3).



#### Charging the vehicle

- After water operation, if the vehicle gets wet. Wipe the charging socket gently to dry with a clean cloth.
- Pull out the cover and take the charging plug from the transmitter (fig. 4).
- Switch off the vehicle. Lift up the charging socket cover. Insert the charging plug into the charging socket on the vehicle (fig. 5).
- Switch on the transmitter. The charging process will begin automatically and the charging indicator will light up. Unplug the charging plug after the charging indicator turns off. Charging is completed. Close socket cover. (fig. 6).



Note: 1. The Hover Racer can operate for about 4 - 5 minutes per every 20 - 30 minutes charging.  
2. Before recharging the battery, wait 10 - 15 minutes for it to cool down.

The transmitter receives a signal from the Hover Racer when the battery is low. When the Hover Racer battery indicator on the transmitter starts blinking, recharge the Hover Racer.

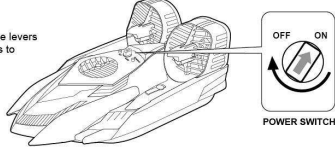
### 3. Operation

#### Procedure for PAIR / SYNC the Hover Racer and Transmitter

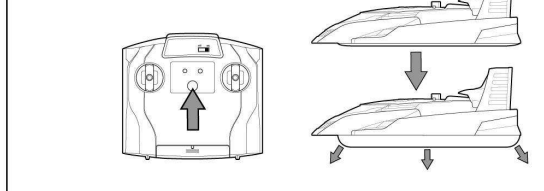
- 2.4 GHz technology allows for many Hover Racers to run without signal interference. A connection, or pair/sync, must be made between the vehicle and the transmitter to function. Sometimes, the pair/sync will happen automatically. If it does not, or if the connection is lost then follow these steps to pair/sync the vehicle and the transmitter.
- Place the Hover Racer on the ground.
  - Turn the Power Switch button to "ON" position both on the Hover Racer and Transmitter, Red LED will then flash.
  - The pair/sync procedure is automatically COMPLETED when you can see the Red LED light up solid (not blinking) on both Hover Racer and Transmitter.

#### Driving your Hover Racer:

- Set vehicle ON/OFF switch to "ON".
- Steer the Hover Racer by adjusting the levers of transmitter in different combinations to perform different action.



Press the "START / STOP" button on the transmitter to inflate the air bag skirt.



LEFT UP/RIGHT UP: FORWARD  
LEFT DOWN/RIGHT DOWN: BRAKING

