

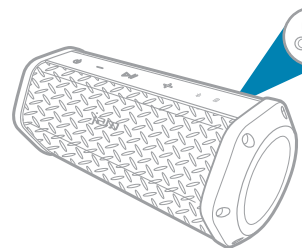
### QUICK START GUIDE GUIDE DE DÉMARRAGE RAPIDE / GUÍA DE INICIO RÁPIDO



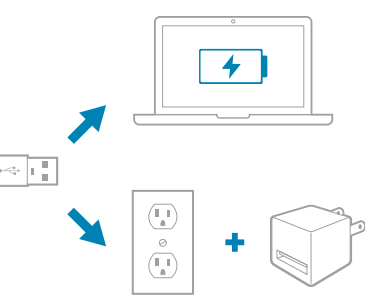
www.jamaudio.com/  
instruction-books

**EN** For a complete user guide and to register your product, visit us online.  
**FR** Pour consulter un guide complet de l'utilisateur et enregistrer votre appareil, visitez notre site Web.  
**ES** Para la Guía de Uso completa, y para registrar su producto con nosotros, por favor visítenos en nuestro sitio web.

### CHARGING CHARGE / RECHARGE DE BATERIAS

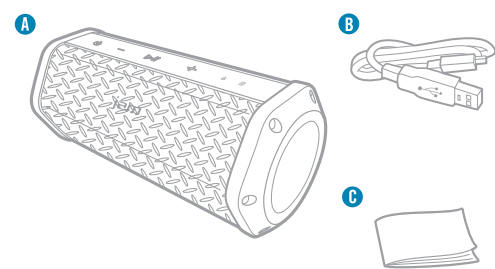


4h



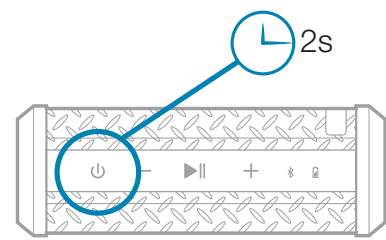
**EN** Charge 4 hours for up to 8 hours of play time. AC adapter not included.  
**FR** Une charge de 4 heures donne jusqu'à 8 heures d'autonomie. Adaptateur c.a. non inclus.  
**ES** Una recarga de 4 horas entrega hasta 8 horas de reproducción. La fuente de poder no está incluida.

### CONTENTS CONTENU / CONTENIDO



**A - Speaker**  
Haut-parleur  
Altavoz  
**B - Charging cord**  
Câble de recharge  
Cable de recarga  
**C - Legal card**  
Carte de renseignements importants  
Tarjeta de asuntos legales

### BLUETOOTH® CONNECTION CONNEXION BLUETOOTH® / CONECCIÓN BLUETOOTH®



Bluetooth®

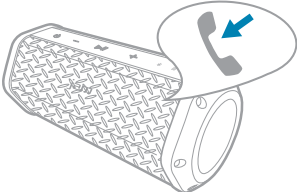
Devices

JAM Xterior Plus

**EN** Turn on the speaker. Enable *Bluetooth* on your device and choose **JAM Xterior Plus** from the list. If prompted, enter code "0000."

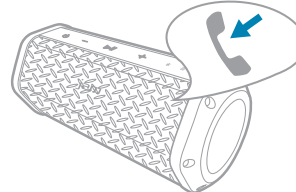
**FR** Allumez le haut-parleur. Activez la fonction *Bluetooth* de votre appareil et choisissez **JAM Xterior Plus** dans la liste des signaux détectés. Si l'appareil vous le demande, inscrivez le code « 0000 ».  
**ES** Encienda el altavoz. Habilite la función *Bluetooth* en su dispositivo y elija **JAM Xterior Plus** de la lista. Si se requiere, ingrese el código "0000".

### VOICE PROMPTS GUIDE VOCAL / INDICACIONES DE VOZ



**EN** To choose a different language, press + and - together.  
**FR** Pour choisir une autre langue, appuyez et maintenez les boutons de lecture/pause et d'augmentation du volume enfoncés.  
**ES** Para elegir un idioma diferente, pulse y mantenga reproducir/pausa y subir el volumen.

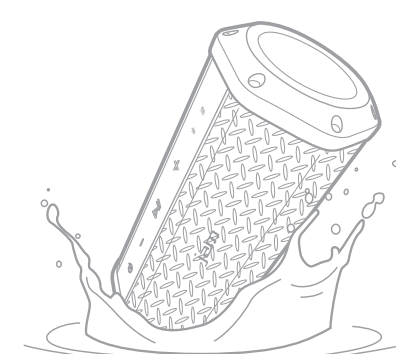
### SPEAKERPHONE TÉLÉPHONE À HAUT-PARLEUR / ALTAVOZ DEL TELÉFONO



**EN** Press play/pause to answer and end a call. See the full user guide for complete details.

**FR** Appuyez sur le bouton lecture/pause pour répondre ou raccrocher. Consultez le guide complet de l'utilisateur pour obtenir de plus amples directives.  
**ES** Presionar el botón reproducir/pausa para recibir y finalizar la llamada. Revise la guía de uso para los detalles de uso completos.

### RUGGED CONSTRUCTION CONSTRUCTION ROBUSTE / CONSTRUCCIÓN ROBUSTA



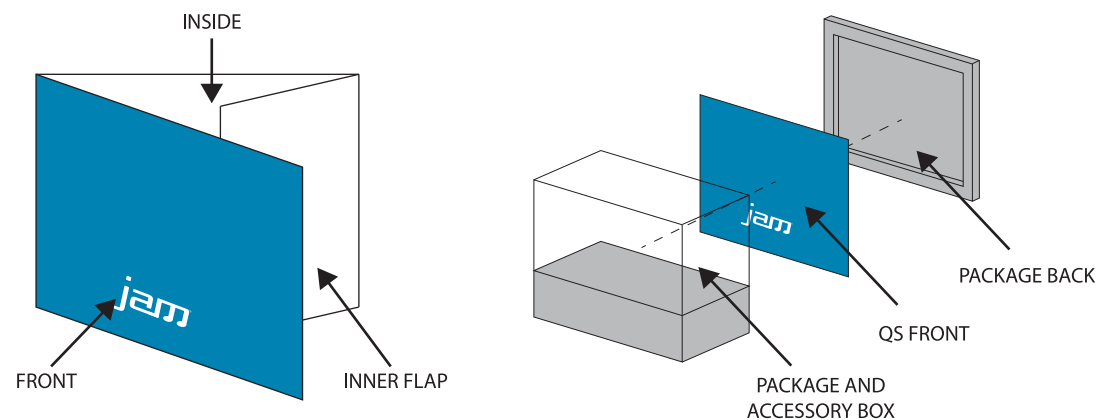
**EN** The Xterior Plus is dirt proof, drop proof, and submersible up to one meter for 30 minutes. Attach it to a bike mount to listen while you ride.

**FR** Xterior Plus est à l'épreuve de la saleté, résistant en cas de chute, et submersible jusqu'à un mètre pendant 30 minutes. Fixez-le à un support de vélo pour écouter tout en conduisant.  
**ES** El Xterior Plus es a prueba de suciedad, a prueba de golpes, y sumergible hasta un metro de profundidad. Adjúntelo a un soporte para bicicleta para escuchar mientras anda.z-le pendant que vous roulez.



SWATCH: JAM METALLIC BLUE  
PMS 10279C METALLIC

### FOLDING AND ASSEMBLY DIAGRAM



### CONTROLS COMMANDES / CONTROLES



**A - On/off**  
Marche/arrêt  
Encendido/apagado  
**B - Volume down / previous track (⊖ 3s)**  
Diminution du volume / piste précédente (⊖ 3s)  
Bajar el volumen / pista anterior (⊖ 3s)  
**C - Play/pause**  
Lecture/pause  
Reproducir/pausa

**D - Volume up / next track (⊕ 3s)**  
Augmentation du volume / piste suivante (⊕ 3s)  
Subir el volumen / pista siguiente (⊕ 3s)  
**E - Bluetooth light**  
Indicateur *Bluetooth*  
Luz de *Bluetooth*

**F - Battery light**  
Indicateur de la batterie  
Luz de la batería

**Bluetooth light**  
Indicateur *Bluetooth* / Luz de *Bluetooth*  
**Pairing mode**  
Mode synchronisation  
Modo de vinculación  
**Connected**  
Connexion établie  
Conectado  
**Aux-in mode**  
Mode auxiliaire  
Modo auxiliar

**Battery light**  
Indicateur de la batterie / Luz de la batería  
**Low battery**  
Batterie faibles  
Batería baja  
**Charging**  
Charge  
Recargando  
**Ready to party**  
Prêt pour la fête  
Listo para la fiesta

### CONTACT US CONTACTEZ-NOUS / COMUNICATE CON NOSOTROS

#### USA

cservice@jamaudio.com  
1.888.802.0040  
8:30am-7:00pm EST M-F / L-V

#### CANADA

cservice@homedicsgroup.ca  
1.888.225.7378  
8:30am-6:00pm EST M-F / L-V

CS-HMP1570 ©2018 HMDX  
All rights reserved / Tous droits réservés / Todos derechos reservados

INNER FLAP

BACK

FRONT

This device complies with Industry Canada licence-exempt RSS standard(s). Operation is subject to the following two conditions: (1) this device may not cause interference, and (2) this device must accept any interference, including interference that may cause undesired operation of the device.

Le présent appareil est conforme aux CNR d'Industrie Canada applicables aux appareils radio exempts de licence. L'exploitation est autorisée aux deux conditions suivantes : (1) l'appareil ne doit pas produire de brouillage, et (2) l'utilisateur de l'appareil doit accepter tout brouillage radioélectrique subi, même si le brouillage est susceptible d'en compromettre le fonctionnement.

NOTE: This equipment has been tested and found to comply with the limits for a Class B digital device, pursuant to part 15 of the FCC Rules. These limits are designed to provide reasonable protection against harmful interference in a residential installation. This equipment generates uses and can radiate radio frequency energy and, if not installed and used in accordance with the instructions, may cause harmful interference to radio communications. However, there is no guarantee that interference will not occur in a particular installation. If this equipment does cause harmful interference to radio or television reception, which can be determined by turning the equipment off and on, the user is encouraged to try to correct the interference by one or more of the following measures:

- Reorient or relocate the receiving antenna.
- Increase the separation between the equipment and receiver.
- Connect the equipment into an outlet on a circuit different from that to which the receiver is connected.
- Consult the dealer or an experienced radio/TV technician for help

Changes or modifications not expressly approved by the party responsible for compliance could void the user's authority to operate the equipment. This device complies with Part 15 of the FCC Rules. Operation is subject to the following two conditions:

- (1) this device may not cause harmful interference, and
- (2) this device must accept any interference received, including interference that may cause undesired operation.